

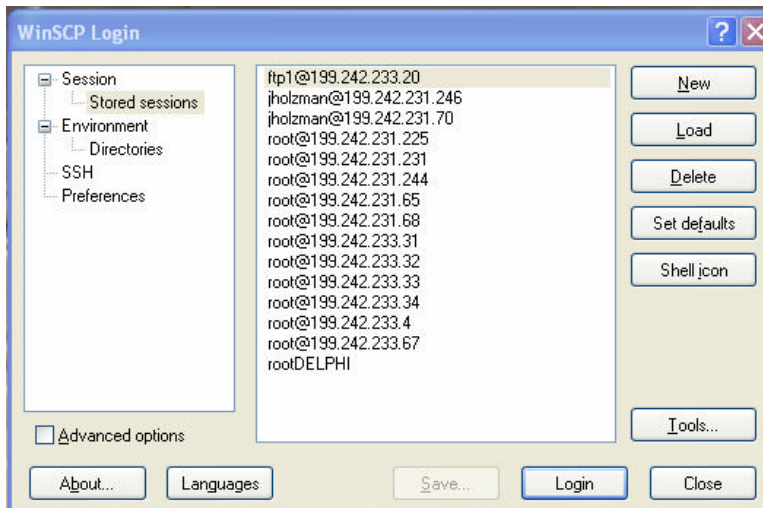
SEFSC Anonymous SFTP Server - 199.242.233.67

Uses [WinSCP3](#) and [PuTTY](#) applications.

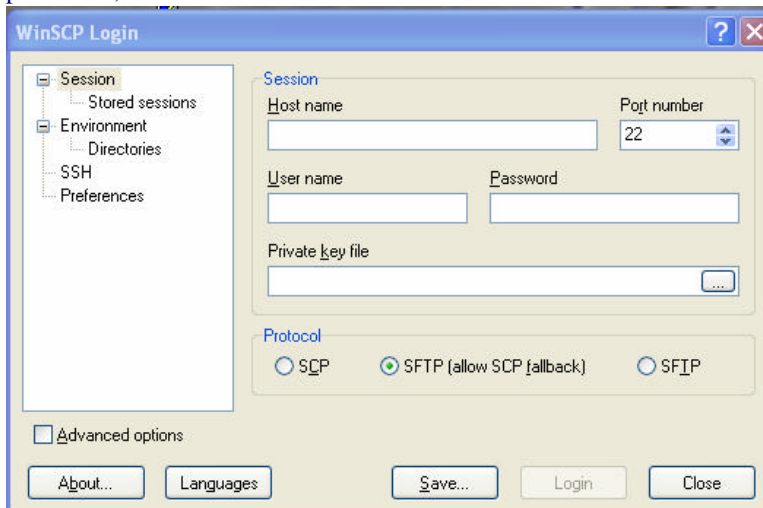
This SFTP server is for government use only. This FTP site was developed as a means of providing a secure way for work groups within NOAA to collaborate and share information. The intent of the site is to off-set the use of the mail server for the transfer of large files. This server provides users with an efficient way to share files between dissimilar systems. The SFTP server is not intended for long term storage. Files are placed on this server so others can copy them to their local systems. Once a user has copied the file(s) from the SFTP server, they should be removed, providing no one else requires access to them. This server will have all files older than 30 days removed from the system during weekly maintenance activities. Maintenance activities will keep the system operating at peak efficiency and keep hardware costs at a minimum.

This process was developed with the assumption the user has access to and utilizes a TCP/IP protocol suite. These are typically loaded on all NOAA/NMFS systems. When dialing into NOAA/NMFS, you will need to ensure you can use SFTP through your Internet Service Provider (ISP).

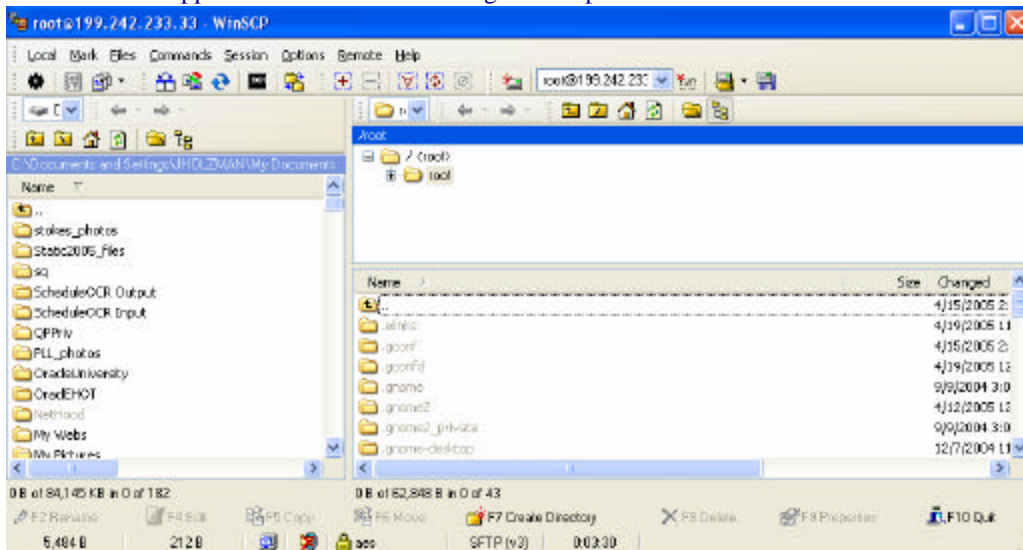
Stored sessions in the WinSCP application:



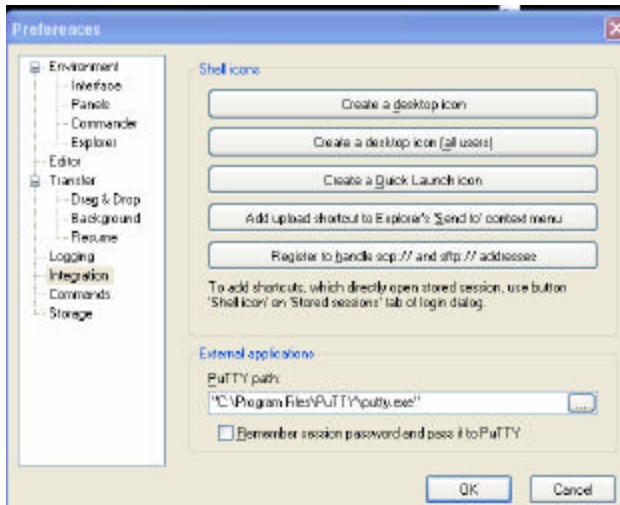
Select new to get this screen. Now enter the IP number for your host server including your User name and pass word, then save this session.



The WinSCSP application interface uses drag and drop.



In the interface under Commands you will find open in putty. You can run putty directly from this interface. Please select Preferences, then integration. Make sure that the correct path to your installed PuTTY application is listed, then select Remember session password and pass it to PuTTY.



Example of the PuTTY login screen.

