

HIV Molecular Immunology 2006: Maps of Ab Epitope Locations Plotted by Protein

Theoretical Biology & Biophysics, Los Alamos National Laboratory

July 31, 2008

The names of MAbs and the location of well characterized linear binding sites of 21 amino acids or less are indicated relative to the protein sequences of the HXB2 clone. This map is meant to provide the relative location of epitopes on a given protein, but the HXB2 sequence may not actually bind to the MAb of interest, as it may vary relative to the sequence for which the epitope was defined. Above each linear binding site, the MAb name is given followed by the species in parentheses. Human is represented by 'h', non-human primate by 'p', mouse by 'm', and others by 'o'. More precise species designations for any given MAb can be found using the web search interface.

1 p17 Ab Epitope Map

Figure 1: p17 Ab Map aa 1–100

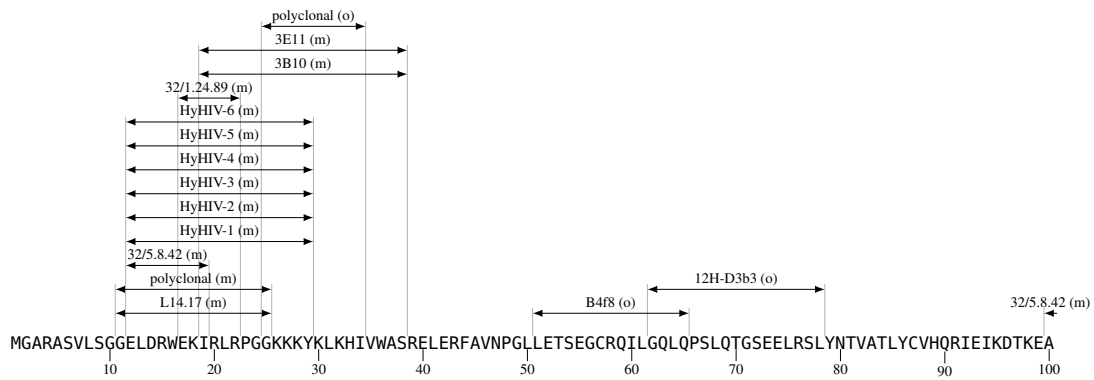
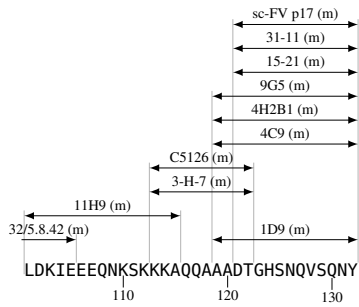


Figure 2: p17 Ab Map aa 101–132



2 p24 Ab Epitope Map

Figure 3: p24 Ab Map aa 1–100

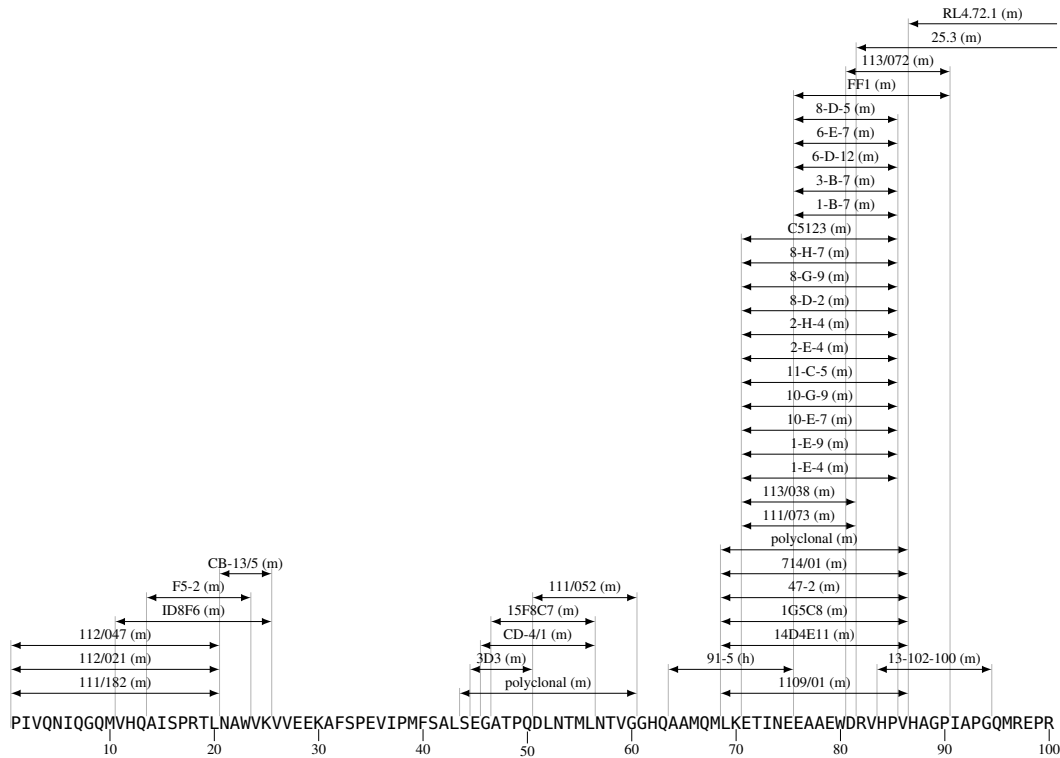


Figure 4: p24 Ab Map aa 101–200

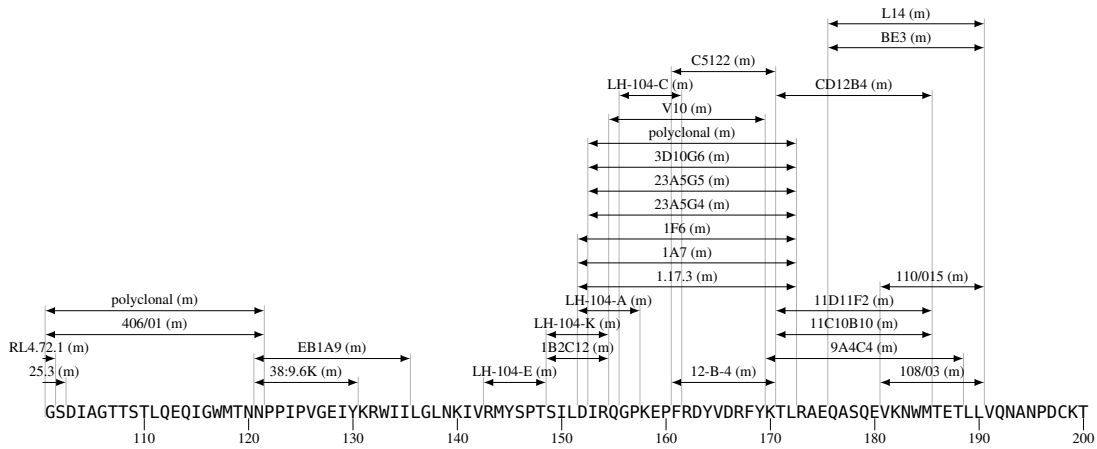
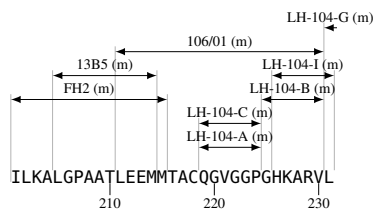


Figure 5: p24 Ab Map aa 201–231



3 p2p7p1p6 Ab Epitope Map

Figure 6: p2p7p1p6 Ab Map aa 1–100

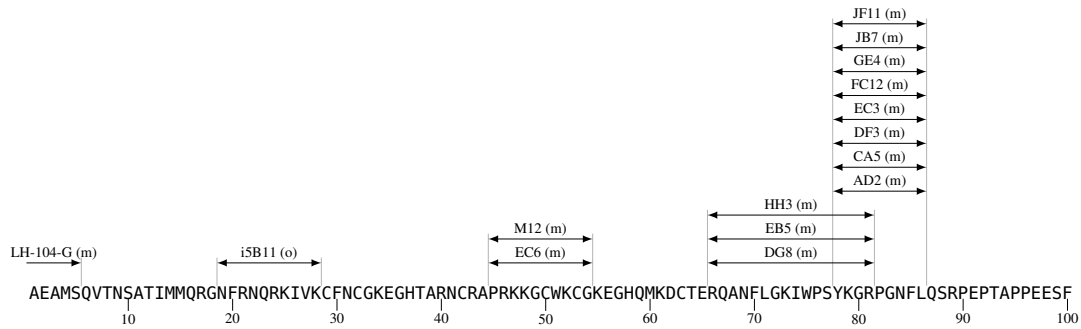
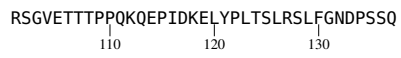


Figure 7: p2p7p1p6 Ab Map aa 101–137



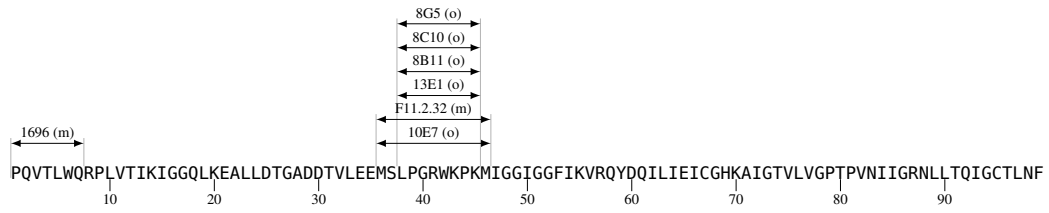
4 Gag/Pol TF Ab Epitope Map

Figure 8: Gag/Pol TF Ab Map aa 1–56

FFREDLAFLOGKAREFSSEQTRANSPTRRELQVWGRDNNSPSEAGADROGTVSFNF
10 20 30 40 50

5 Protease Ab Epitope Map

Figure 9: Protease Ab Map aa 1–99



6 RT Ab Epitope Map

Figure 10: RT Ab Map aa 1–100

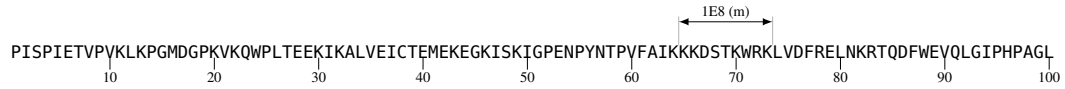


Figure 11: RT Ab Map aa 101–200

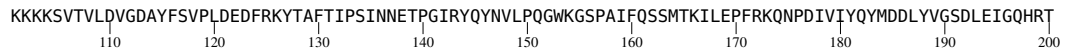


Figure 12: RT Ab Map aa 201–300

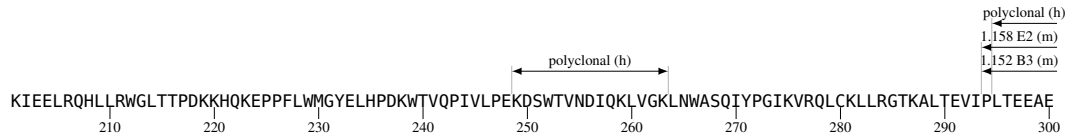


Figure 13: RT Ab Map aa 301–400

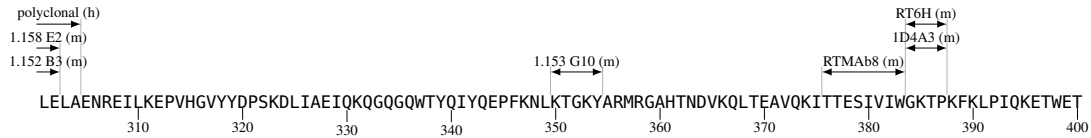


Figure 14: RT Ab Map aa 401–500

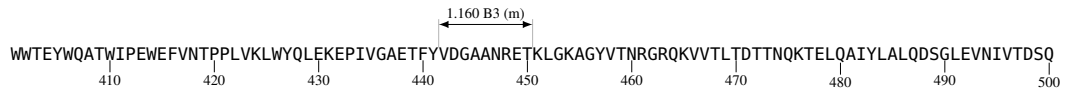
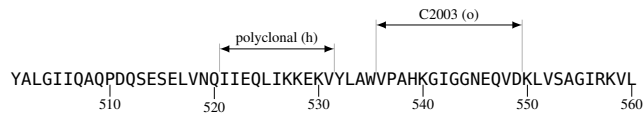


Figure 15: RT Ab Map aa 501–560



7 Integrase Ab Epitope Map

Figure 16: Integrase Ab Map aa 1–100

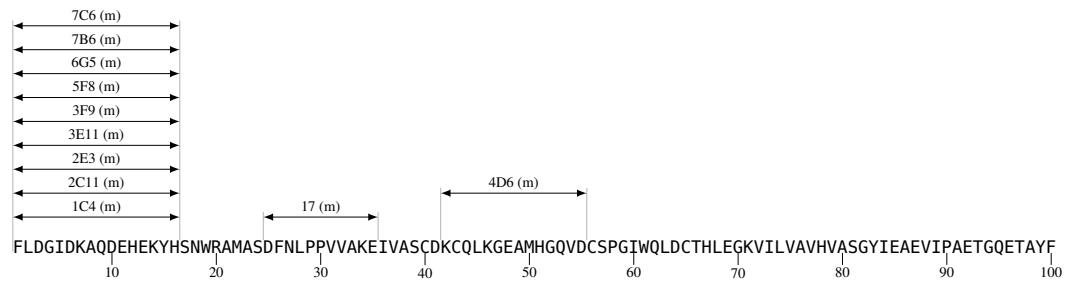


Figure 17: Integrase Ab Map aa 101–200

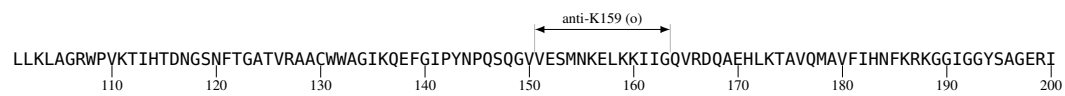
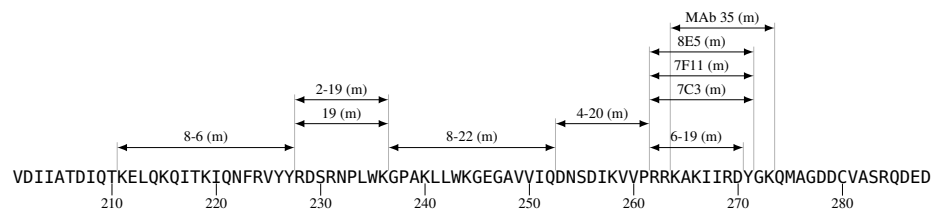


Figure 18: Integrase Ab Map aa 201–288



8 Vif Ab Epitope Map

Figure 19: Vif Ab Map aa 1–100

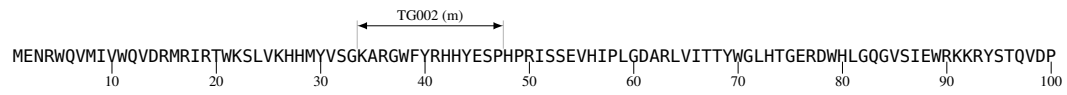


Figure 20: Vif Ab Map aa 101–192



9 Vpr Ab Epitope Map

Figure 21: Vpr Ab Map aa 1–96

MEQAPEDQGPQREPHNEWTLLELLEELKNEAVRHFPRIWLHGLGQHIYETYGDTWAGVEAIIIRILQQLLFHFRIGCRHSRIGVTRQRRARNGASRS
10 20 30 40 50 60 70 80 90

10 Tat Ab Epitope Map

Figure 22: Tat Ab Map aa 1–100

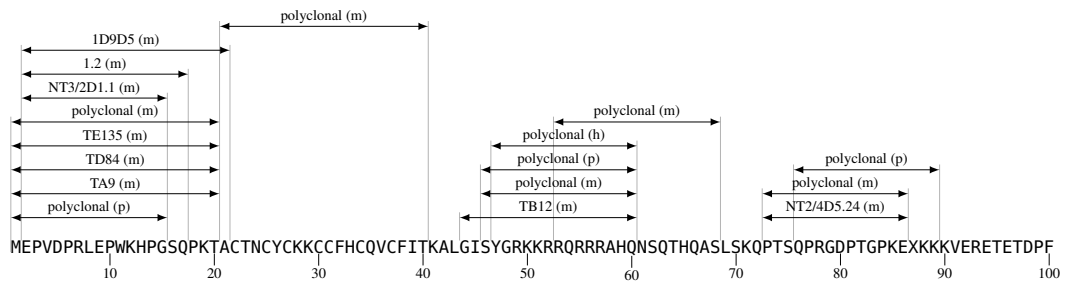


Figure 23: Tat Ab Map aa 101–101

D
101

11 Rev Ab Epitope Map

Figure 24: Rev Ab Map aa 1–100

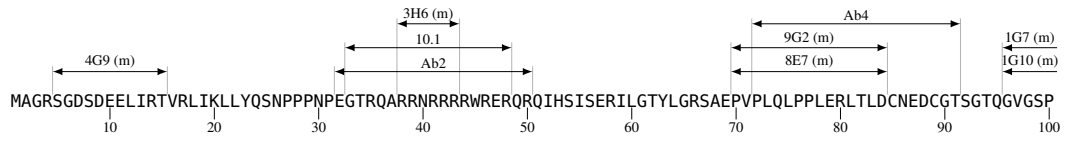
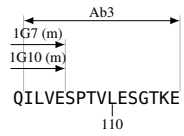


Figure 25: Rev Ab Map aa 101–116



12 Vpu Ab Epitope Map

Figure 26: Vpu Ab Map aa 1–82

TQPIPIVAIYALVVAIIIAI¹⁰VVWSIVIIIEYRKILRQRKID²⁰RLIDRLIERAEDSGNESEGE³⁰ISALVEMGVEMGHAPWDV⁴⁰DDL⁵⁰
60 70 80

13 gp160 Ab Epitope Map

Figure 27: gp160 Ab Map aa 1–100

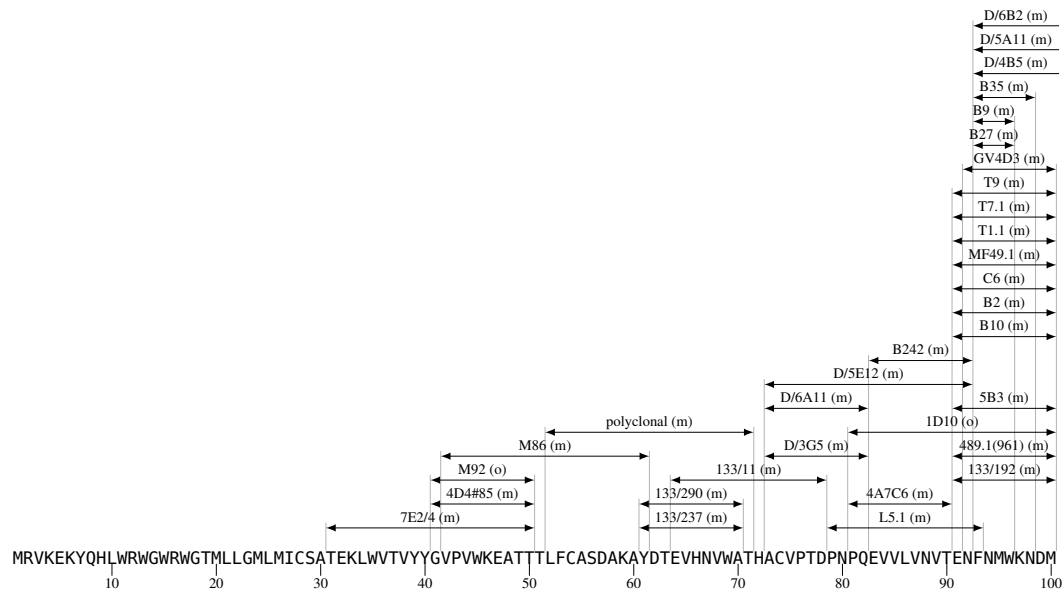


Figure 28: gp160 Ab Map aa 101–200

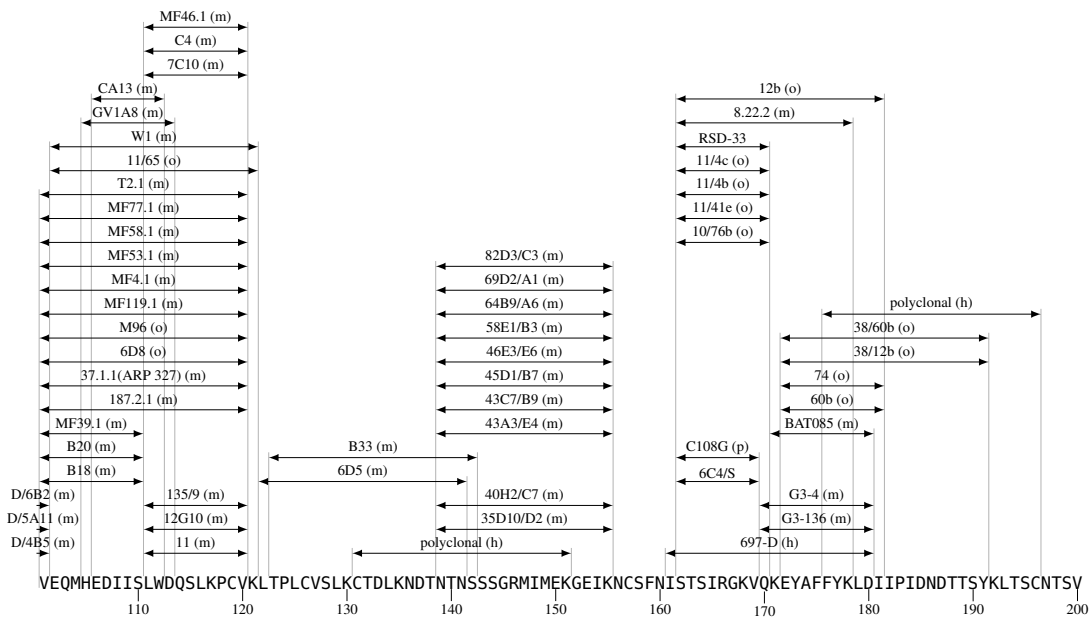


Figure 29: gp160 Ab Map aa 201–300

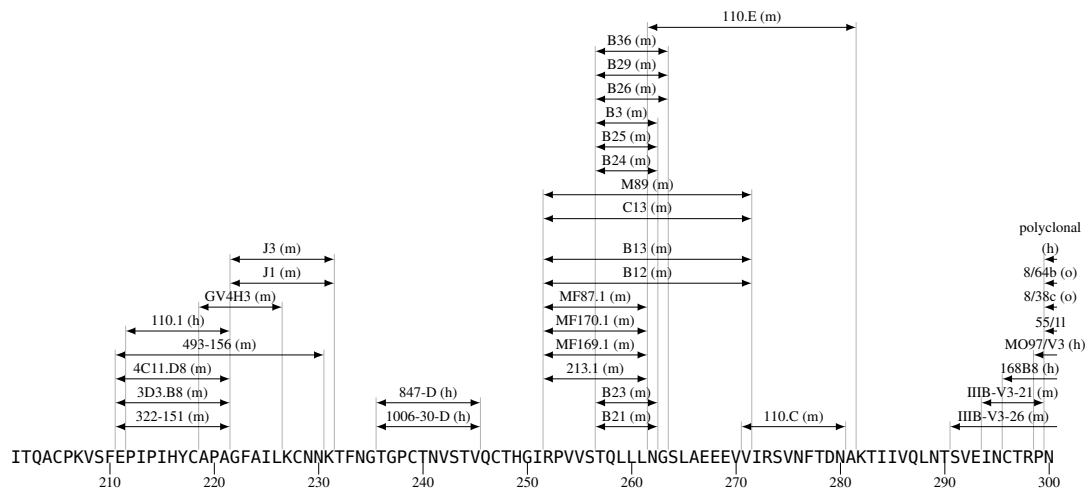


Figure 30: gp160 Ab Map aa 301–400 1/3

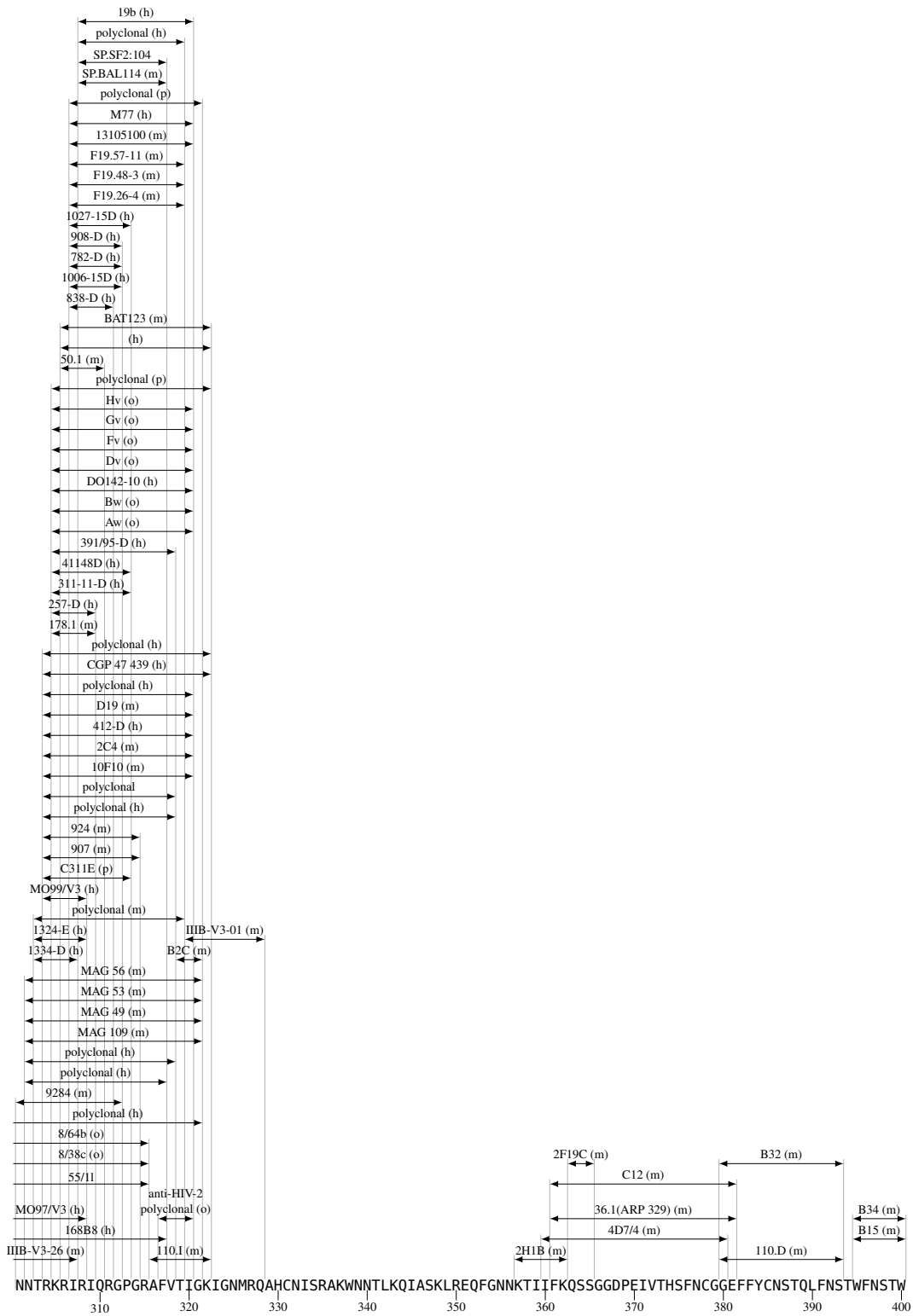


Figure 31: gp160 Ab Map aa 301–400 2/3

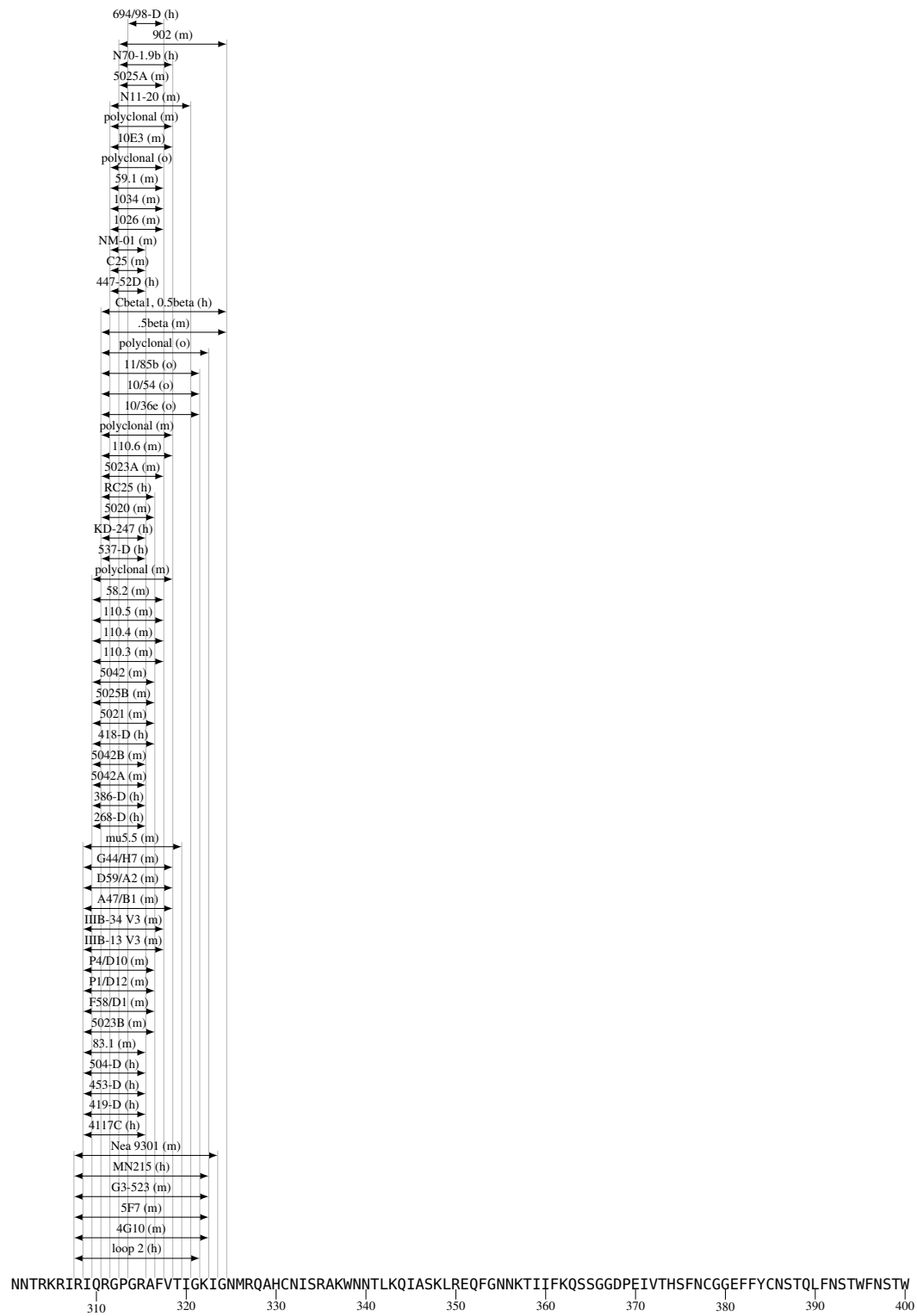


Figure 32: gp160 Ab Map aa 301–400 3/3



Figure 33: gp160 Ab Map aa 401–500

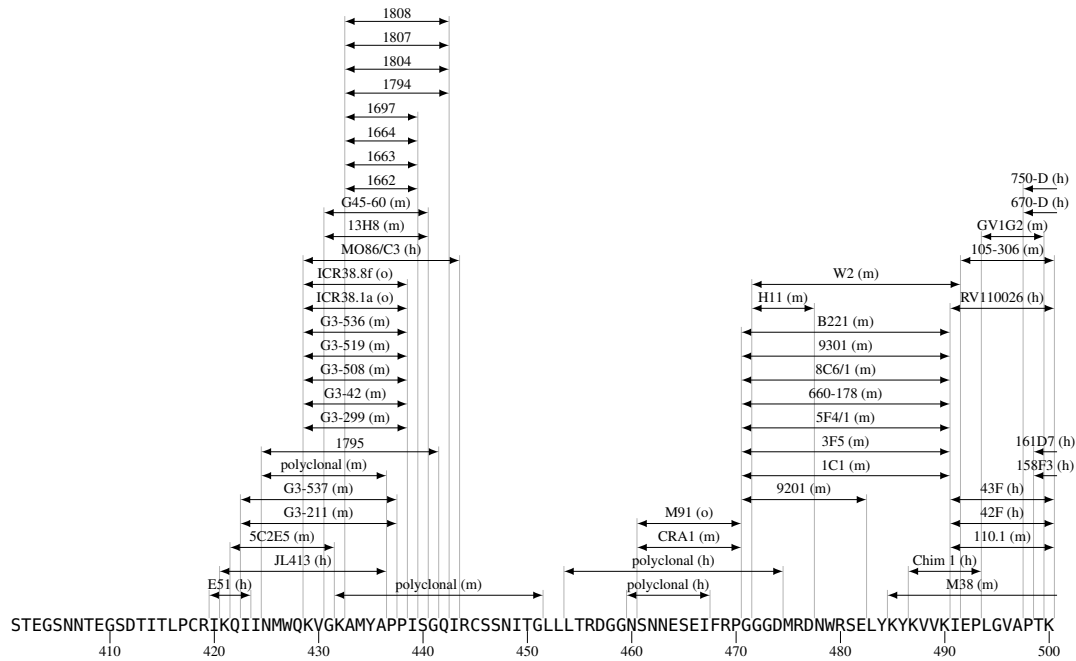


Figure 34: gp160 Ab Map aa 501–600

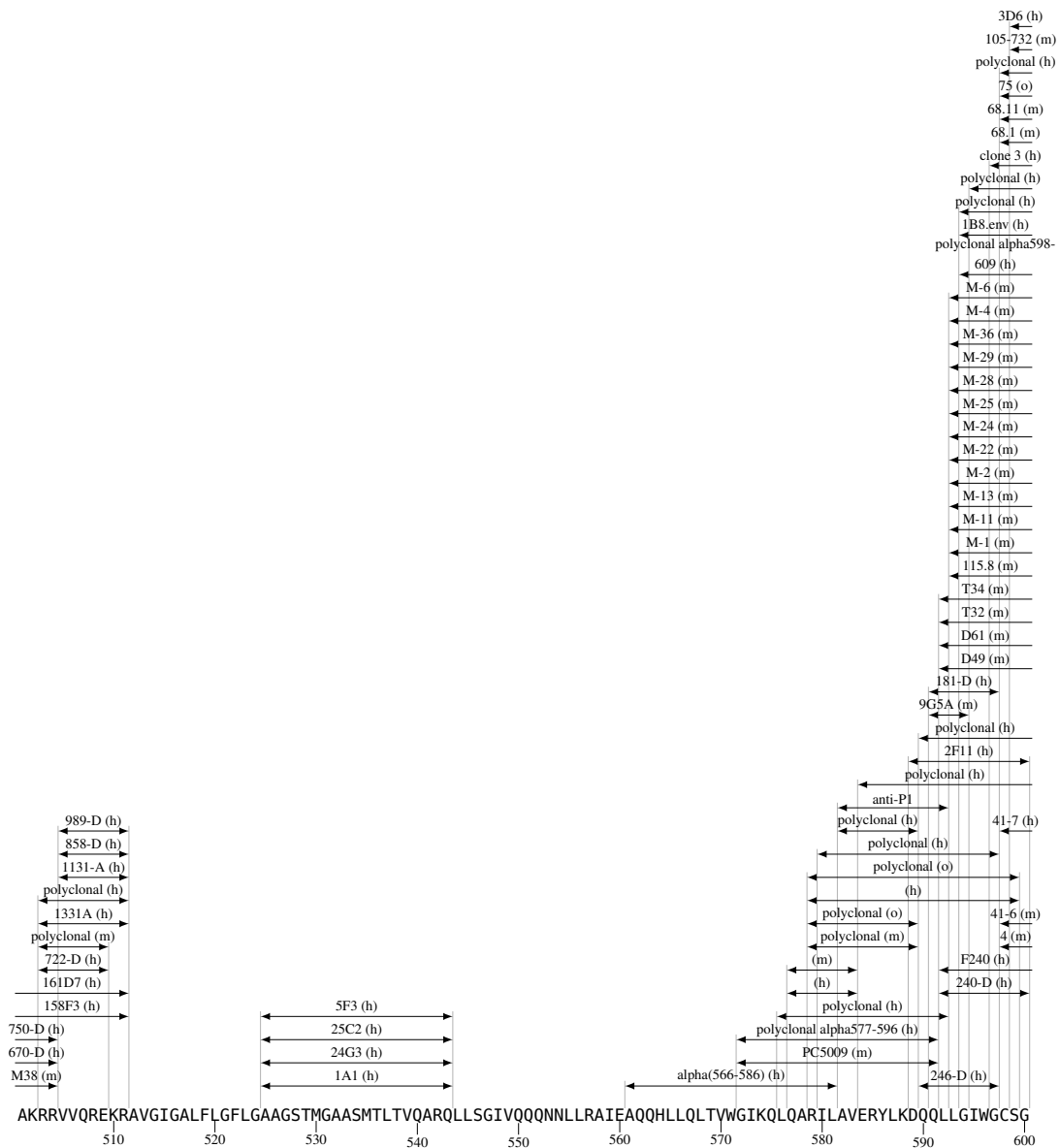


Figure 35: gp160 Ab Map aa 601–700

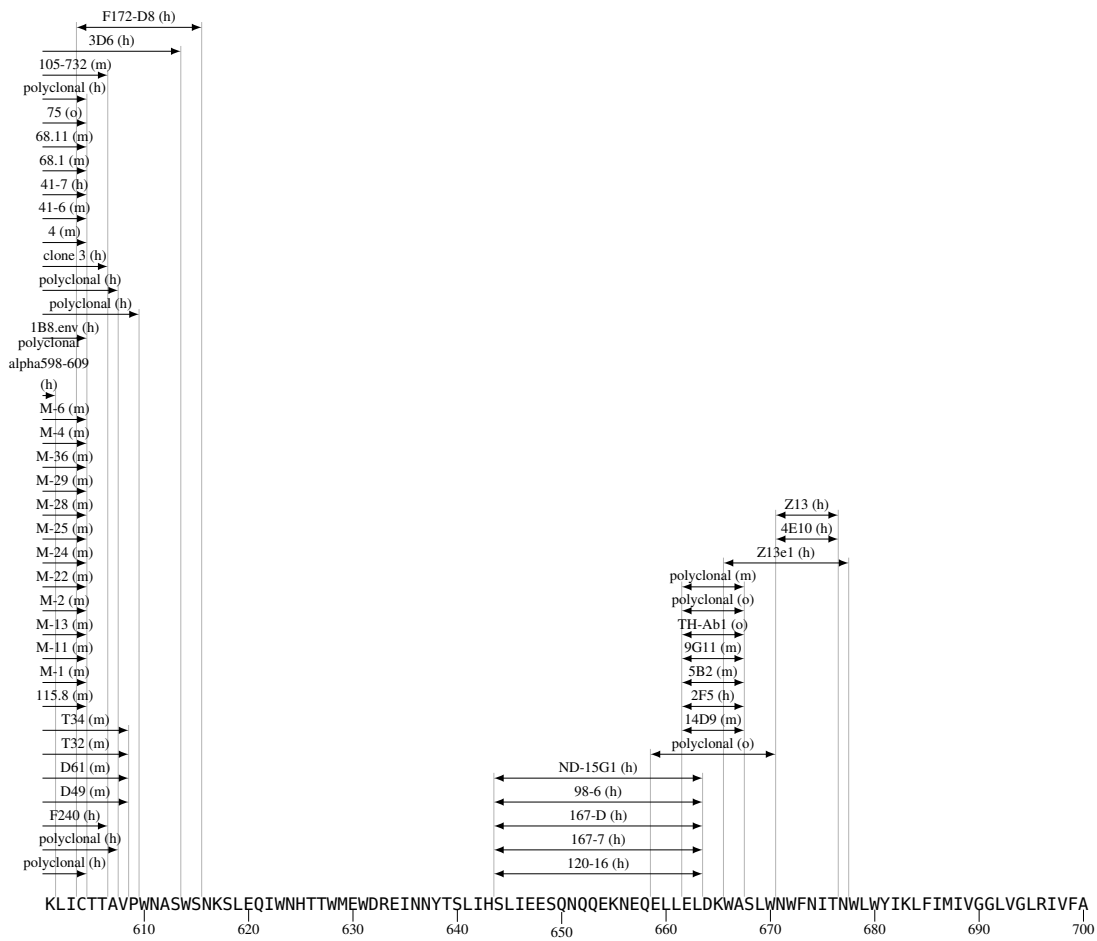


Figure 36: gp160 Ab Map aa 701–800

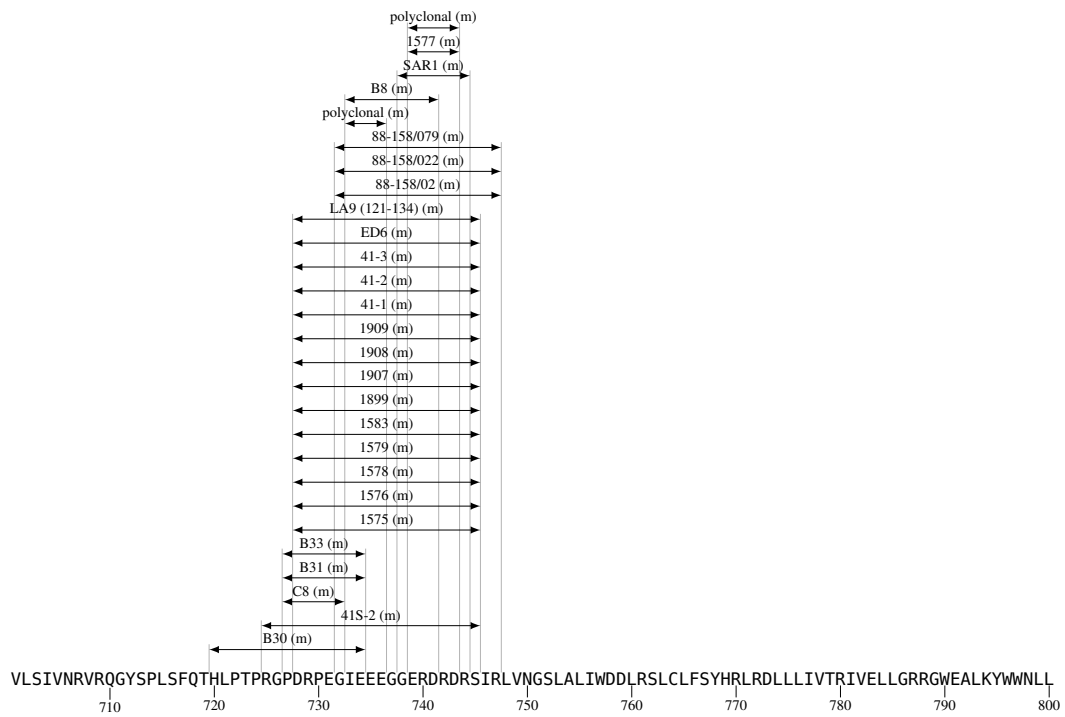


Figure 37: gp160 Ab Map aa 801–856



14 Nef Ab Epitope Map

Figure 38: Nef Ab Map aa 1–100

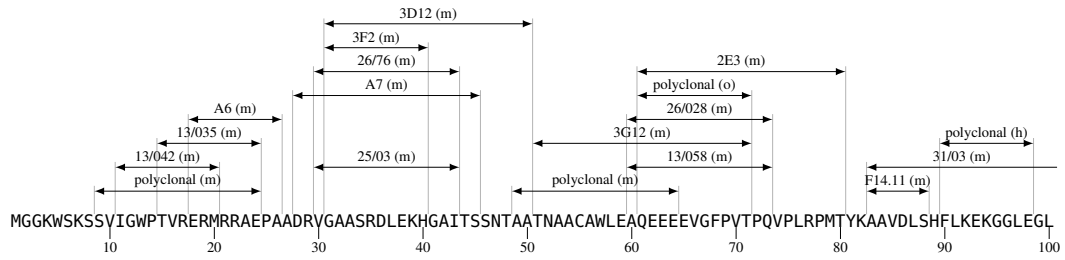


Figure 39: Nef Ab Map aa 101–200

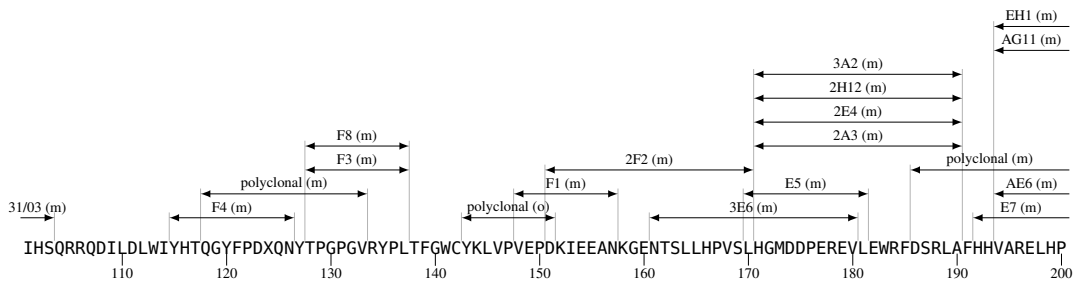


Figure 40: Nef Ab Map aa 201–206

