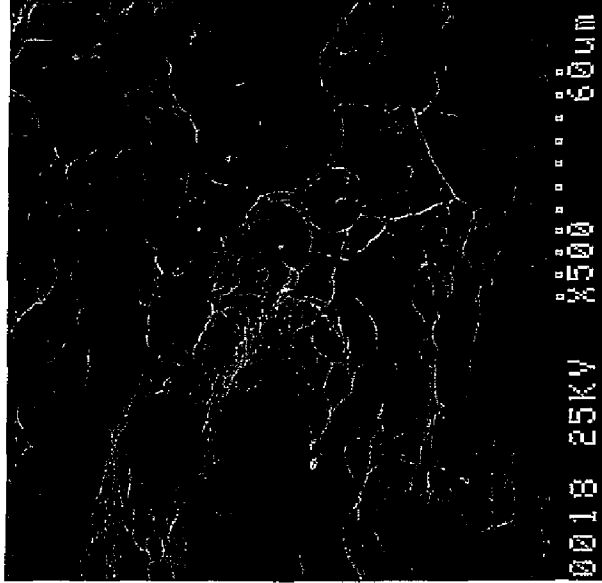


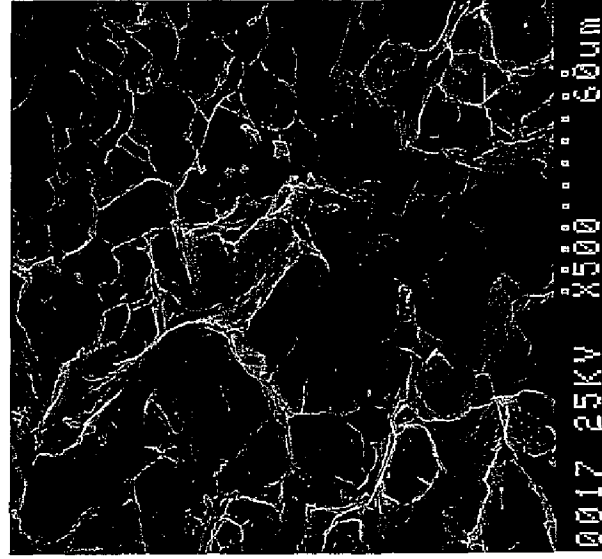
Figure 13: SEM fractography of specimen 1A-1, near fracture origin.

Photo IDs: (a) DC18234-PAL-1-6/25/99
(c) DC18234-CEM-2-7/8/99

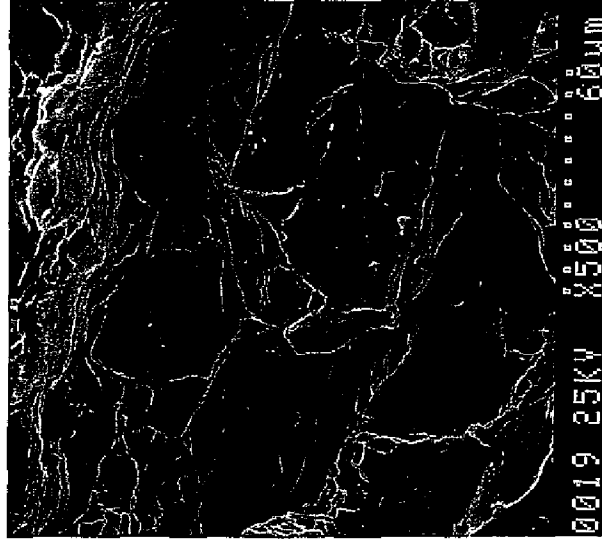
(b) DC18234-CEM-3-7/8/99
(d) DC18234-CEM-1-7/8/99



(a)



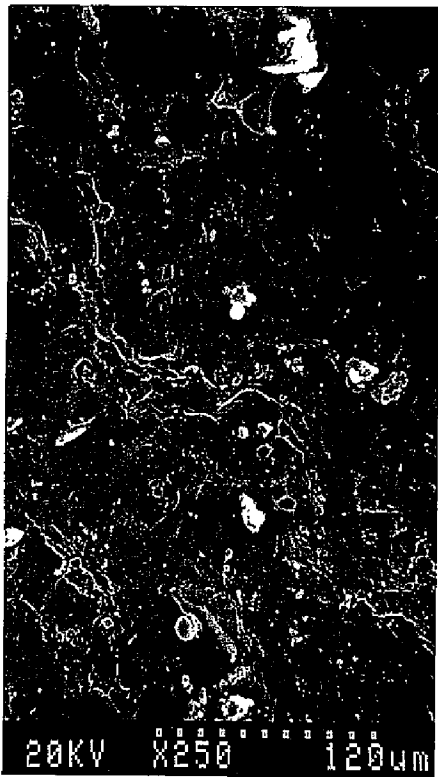
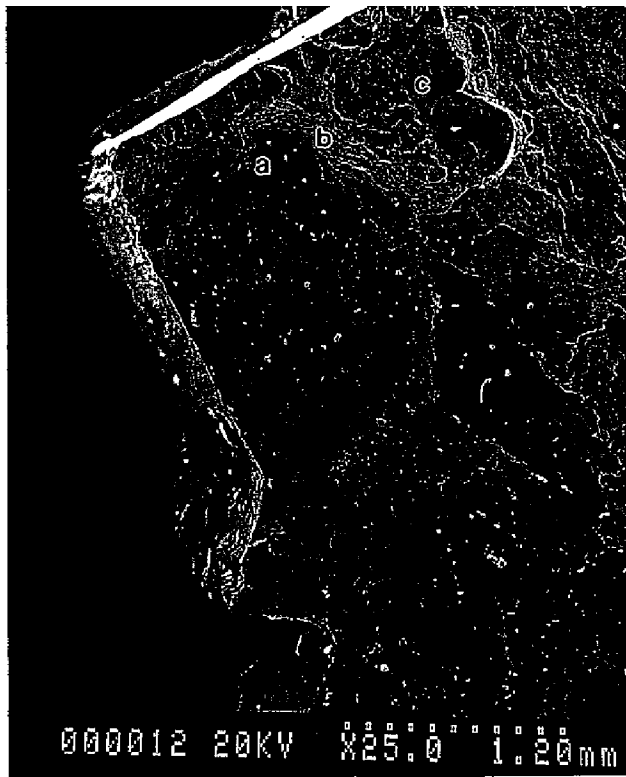
(b)



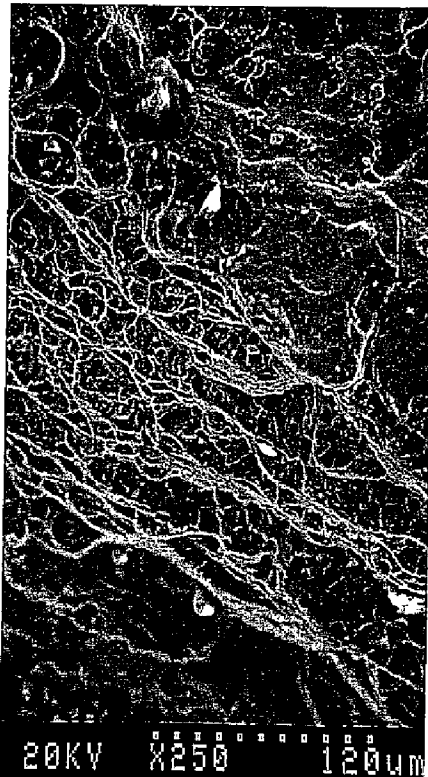
(c)

Figure 14: SEM fractography of specimen 1A-2, at first beachmark.

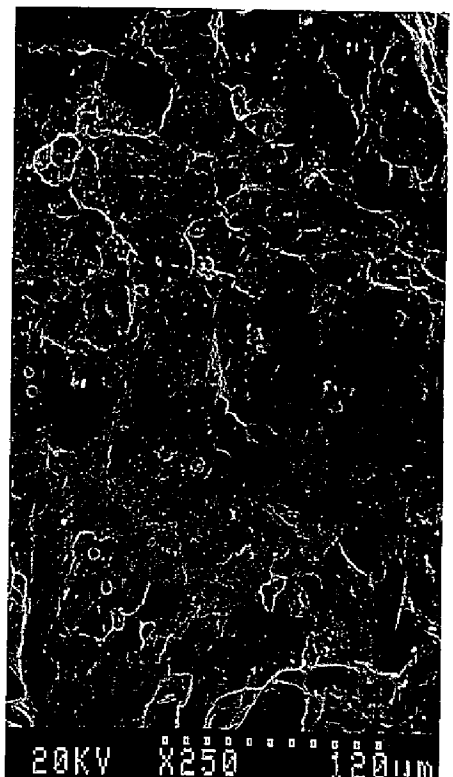
(Photo IDs: DC18234-PAL-2-6/25/99, -PAL-18,-17,-19-7/7/99))



(a)



(b)



(c)

Figure 15: SEM fractography of specimen 1A-2, at top of neck.

(Photo IDs: DC18234-CEM-9,-10,-12,-14-6/29/99)

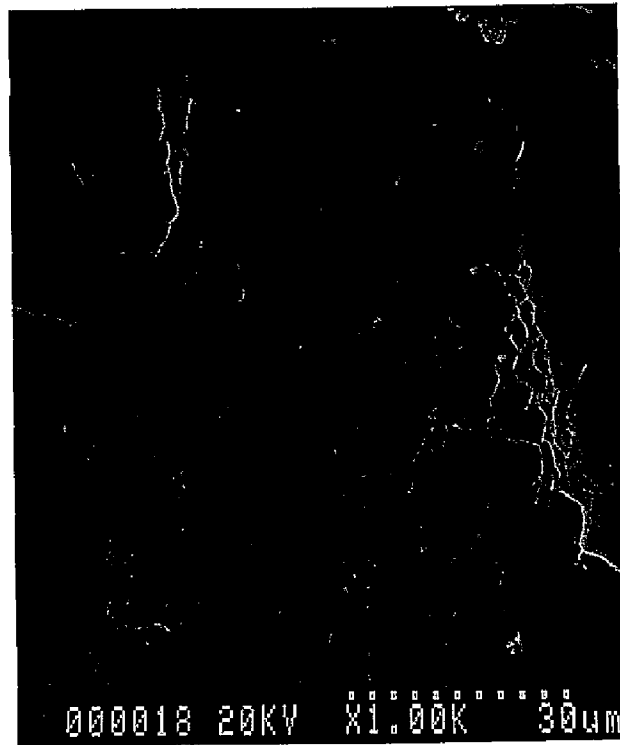


Figure 15: SEM fractography of specimen 1A-2, at top of neck (continued).
Detail of Figure 15(c).

(Photo ID: DC18234-CEM-15-6/29/99)

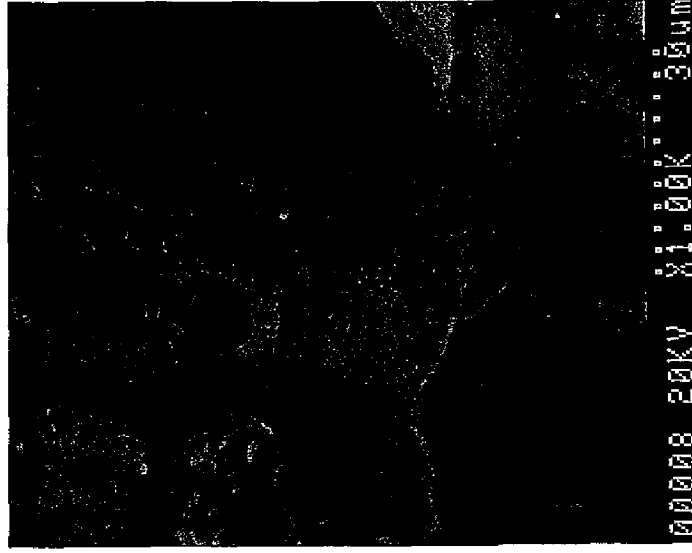
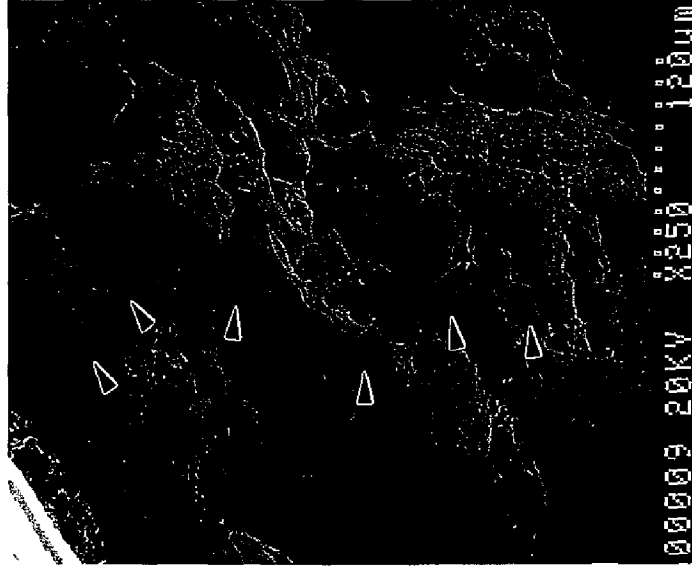
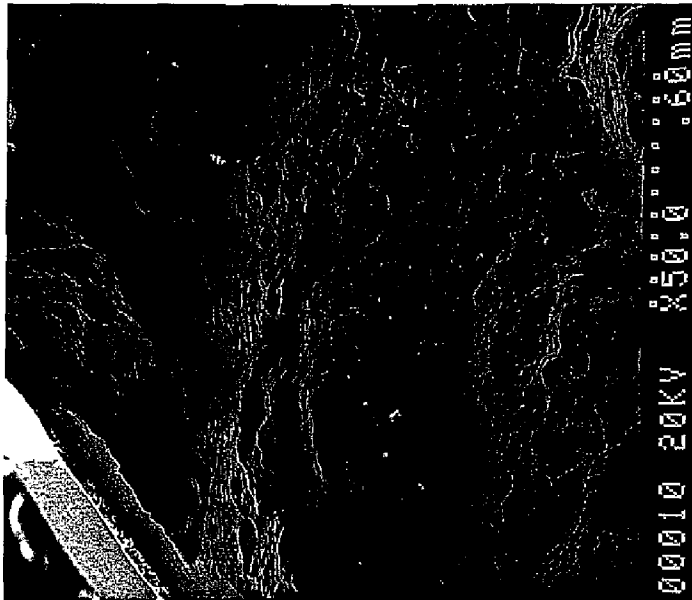


Figure 16: SEM fractography of specimen 1A-2, at outer surface.

(Photo IDs: DCI8234-PAL-2-6/25/99, -CEM-10,-9,-8-8/18/99)

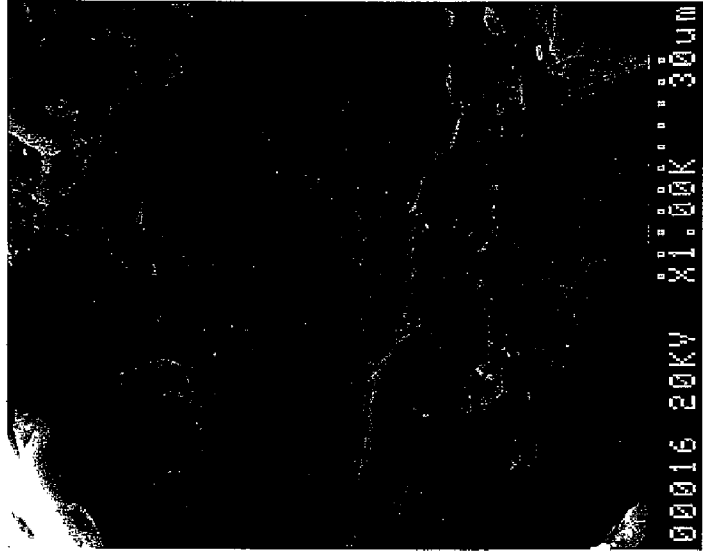
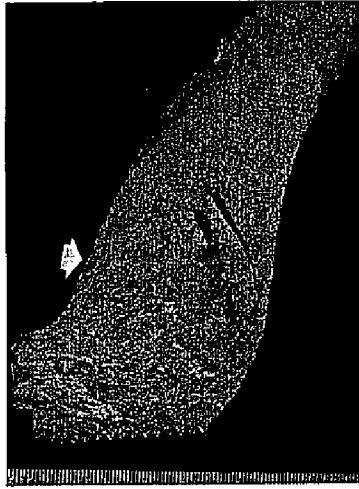


Figure 17: SEM fractography of specimen 1A-2, at outer surface.

(Photo IDs: DC18234-PAL-2-6/25/99, -CEM-15,-17,-16-8/18/99)



Figure 18: Fracture surface 1A-1, showing crack fronts at different time points (beach marks).



Figure 19: Fracture surface 1A-2, showing crack fronts at different time points (beach marks).

Appendix A: Detailed Photodocumentation of Cylinder

A

Ex™

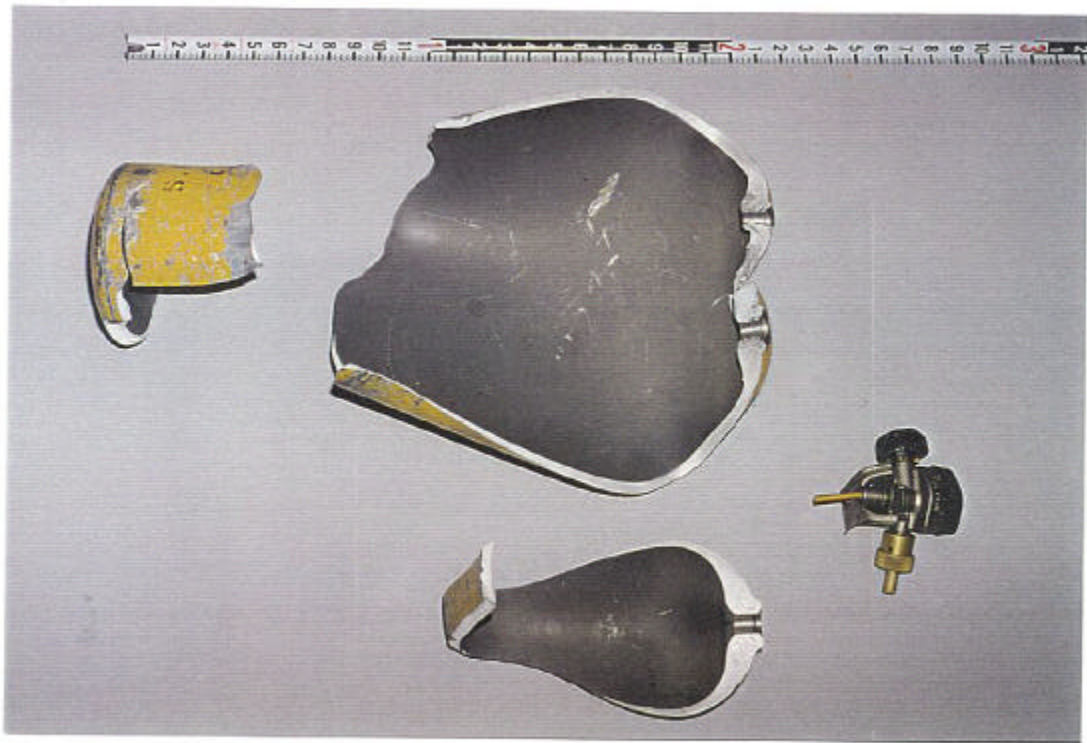


Photo ID: DC18234-R1E5



Photo ID: DC18234-R1E6

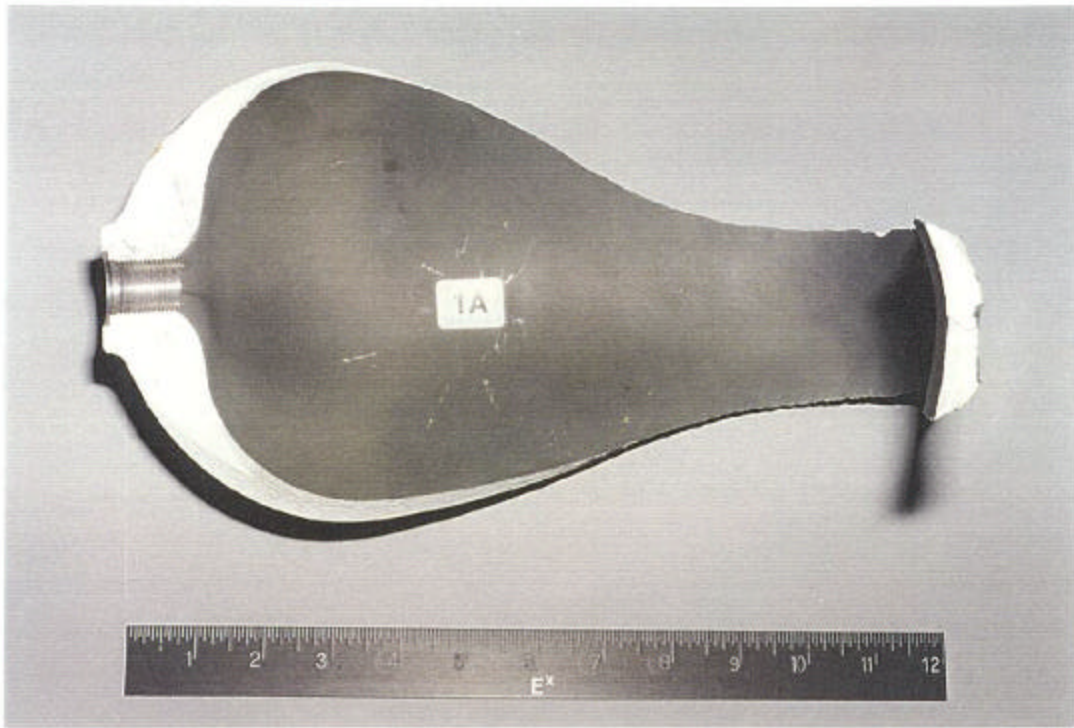


Photo ID: DC18234-R1E14

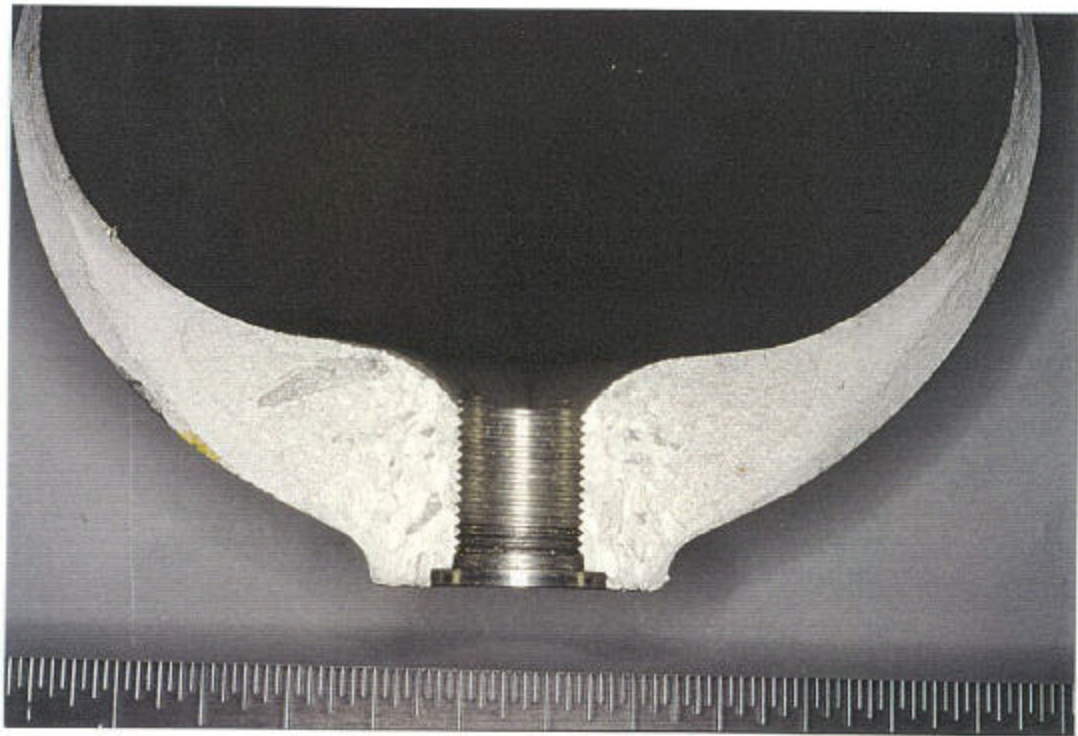


Photo ID: DC18234-RE29