

P

FEDERAL ACCOUNT SYMBOL

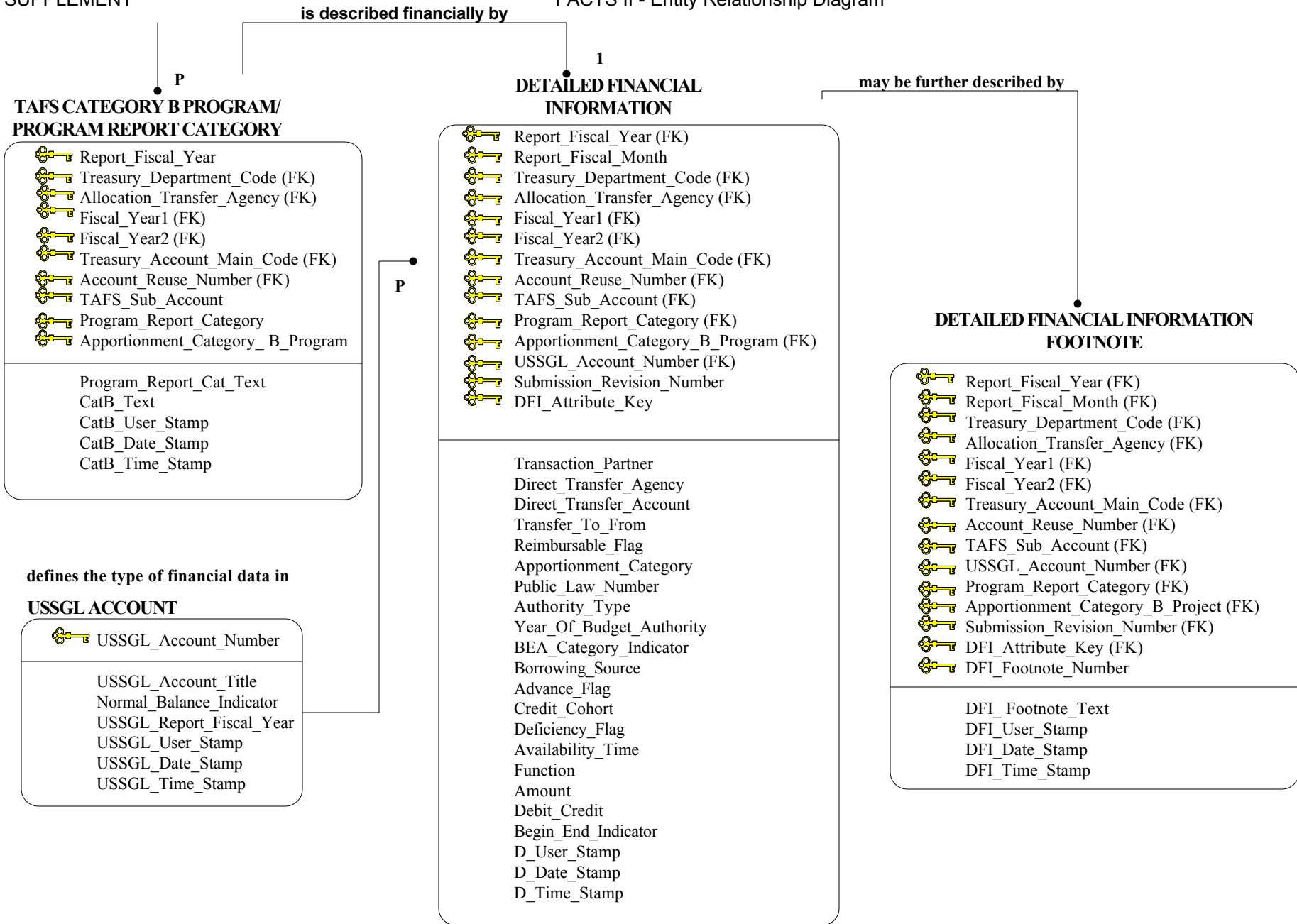
<ul style="list-style-type: none"> Treasury_Department_Code Treasury_Account_Main_Code Account_Reuse_Number
<ul style="list-style-type: none"> Budget_Agency_Code (FK) Budget_Bureau_Code (FK) Budget_Account_Code (FK) Federal_Account_Symbol_Title Fund_Type Budget_Publication_Flag Financing_Account_Indicator Start_Date End_Date FAS_User_Stamp FAS_Date_Stamp FAS_Time_Stamp

is fiscally divided into

TREASURY APPROPRIATION/FUND SYMBOL (TAFS)

<ul style="list-style-type: none"> Treasury_Department_Code (FK) Allocation_Transfer_Agency Fiscal_Year1 Fiscal_Year2 Treasury_Account_Main_Code (FK) Account_Reuse_Number (FK)
<ul style="list-style-type: none"> Availability_Type Disbursing_Authority_End_Date Report_Submission_Flag Expiration_Flag Definite_Indefinite_Flag TAFS_Status TAFS_User_Stamp TAFS_Date_Stamp TAFS_Time_Stamp

is categorized by



This page was intentionally left blank.