

1908, Fort Myer, Virginia

Wright airplane loaded on top of a military supply wagon being towed by automobile to the Fort Myer parade ground, Orville, in straw hat, standing on running board of car, Spencer Crane driving. Orville had arrived in Washington on August 20 to conduct acceptance test with Wright airplane for the U.S. Army.

MCFWP 156; Aero Digest, v. 11, Dec. 1927: 638; HAWBHP 156; Look, v. 2, Feb. 1, 1938: 56; Nat Geog Mag, v. 104, Dec. 1953: 742; SMIN A18,470; SMIN 42,290-G; TILLMU 35; USAF 486113

Wright airplane being transported from balloon shed to hangar, on parade ground, large military spherical balloon at extreme left.

MCFWP 157; Aero Digest, v. 11, Dec. 1927: 638; Bee-Hive, v. 28, Spring 1953: 21; CLHAGW facing 140; JOHHU 233; Nat Geog Mag, v. 112, Aug. 1957: 267; SMIN 42,287-D; TILLMU 57; USAF 5434 AC; USAF 49,589; U.S. Air Services, v. 29, Sept. 1931: 22

Wright airplane being transported across parade ground, large spherical balloon visible at right, many spectators on ground.

SMIN 42,284-E

Wright airplane on top of military supply wagon in front of hangar.

MCFWP 155; SMIN 42,286-6; TILLMU 34

Orville standing beside wagon used to transport Wright airplane at entrance to hangar.

SMIN 42,286-H; USAF 48610

Orville standing at wing tip of Wright airplane being removed from transport wagon.

MCFWP 154; SMIN 42,289-C

Close-up view of center section of Wright airplane showing hicycle-chain transmission, radiator, gas tank, seat, and controls.

MCFWP 158; ASMEJ, v. 30, Dec. 1908: b. 1642-1643; CLHAGW facing 168; JOHHU 240; ME-FMF facing 54; SMINAR 1908 b. 134-135; USAF 17497

Close-up view of center section of Wright airplane showing seat, motor, and skids.

SMIN 42,287-B

Close-up view of center section of Wright airplane showing control levers, motor, and fuel tank.

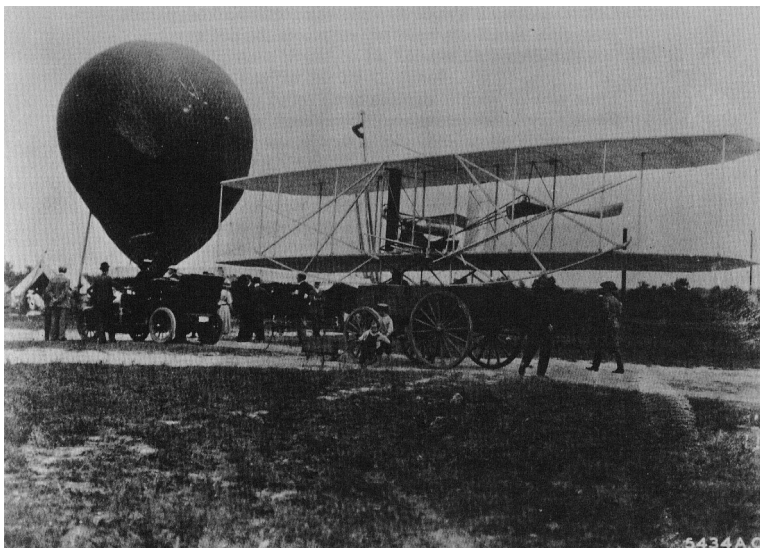
SMIN 42,290-B

Close-up view of center section of Wright airplane showing motor, radiator, and right propeller.

Aero Digest, v. 11, Dec. 1927: 640; HAWBHP 77; SMIN 42,290-E; USAF 48605

- View of center section of Wright airplane from right wing tip between struts.
SMIN 42,290-D
- Close-up view of controls of Wright airplane.
Aero Digest, v. 11, Dec. 1927: 640; Sci Am, v. 99, Sept. 26, 1908: 208; SMIN 17,132-A
- Detail of strut fitting and warping wire pulley of Wright airplane.
USAF 48600
- View of Wright airplane partly assembled in hangar.
SMIN 42,284-H
- Close-up view of blinker between elevator planes.
Aero Digest, v. 11, Dec. 1927: 640; Sci Am, v. 99, Sept. 26, 1908; SMIN 42,286-E; USAF 48595
- Close-up view of lower end of rudder assembly of Wright airplane.
SMIN 42,287
- Close-up view of rudder and boom of Wright airplane.
Aero Digest, v. 11, Dec. 1927: 640; SMIN 42,287-A; SMIN 76-17483; USAF 48599
- Close-up view of motor mounted in Wright airplane.
SMIN 21,862-A
- Close-up rear view of Wright airplane showing propellers and hicycle-chain transmission.
ASMEJ, v. 30, Dec. 1908: b. 1642-1643; SMINAR 1908: b. 134-135
- Close-up view of center section of Wright airplane showing radiator, gas tank, and seat.
ASMEJ, v. 30, Dec. 1908: b. 1642-1643; SMINAR 1908: facing 134
- Close-up view of lefthand propeller in Wright airplane.
SMIN 6, 159-C
- Side view of Wright airplane in hangar, spectators gathered around inspecting it.
SMIN 42,285-G, USAF 48601
- Side view of Wright airplane in hangar, five maintenance personnel at side and in front of plane.
SMIN 42,284-H
- Full left side view of Wright airplane on parade ground.
SMIN 42,285-E

The Wright airplane, on the parade grounds at Fort Myer, Virginia, with a military balloon behind it, is being readied for army test flights, September 1908.



Left side view of Wright airplane on parade ground, Fort Myer buildings in background.

SMIN 42,284-F

Right front view of Wright airplane in front of hangar, small group looking on at left.

SMIN 43,055-D

Left front view of Wright airplane on parade ground, small group of spectators at left.

SMIN 43,056-E

Left side view of Wright airplane being pulled by military personnel to starting point for flight.

SMIN 42,288-G

Side view of Wright airplane on starting track, launching tower at left, military personnel pulling rope to raise weight to top of tower.

SMIN 42,534

Right front view of Wright airplane on launching track, Charles W. Furnas and Charles E. Taylor standing at front.

SMIN 42,281-E; USAF 48587

Left side view of Wright airplane being rolled across parade ground to launching site.

SMIN 42,928-H

Left rear view of Wright airplane being rolled across parade ground to takeoff site.

SMIN 42,289-H

Front view of Wright airplane being rolled over parade ground by military personnel, several women walking in front, numerous spectators in rear.

SMIN 43,056-F

Left front view of Wright airplane in front of hangar, military personnel starting to roll airplane to starting point for flight.

Look, v. 2, Feb. 1, 1938: 56; SMIN 42,287-E; USAF 48609

Right front view of Wright airplane being placed on launching track.

SMIN 42,284-B

Side view of Wright airplane being placed on launching track, military personnel working in front of airplane.

SMIN 42,290-C

Rear view of Wright airplane in hangar as seen from outside, with reporters, photographers, and spectators gathered around entrance.

LC-JONES; SMIN 42,288; SMIN 42,290-F; USAF 9554 A.S.; USAF 243393

Front view of Wright airplane being wheeled from tent hangar.

TILLMU 58; SMIN 42,289-E. Similar: LC-JONES

View of crowd gathered to witness flights by Orville, launching derrick at extreme right, Fort Myer buildings in background.

LC-BAIN

Right front view of Wright airplane on parade ground at Fort Myer, spectators behind roped off area at rear.

LC-BAIN

Right front view of Wright airplane in hangar, two men working on it.

LC-BAIN

Front view of Wright airplane in front of hangar, group of spectators looking on at right rear.

LC-BAIN

Lt. Frank P. Lahm in front of his horse holding its bridle, conversing with Glenn Curtiss, crowds witnessing Wright flights in background.

SMIN 42,667-D; USAF 48594

View of monorail and tower used to start Wright airplane, Fort Myer barracks buildings in background.

Fly, v. 1, Nov. 1908: 6; SMIN 43,062-C

Right front view of Wright airplane on starting track, launching tower behind, spectators gathered around airplane.

Aero Digest, v. 11, Dec. 1927: 683; SMIN A17,132-B; TAPHF 34; USAF 48606

View of large crowd gathered around Wright airplane and launching tower, Fort Myer building in background.

SMIN 43,056-H

Wright airplane being placed on launching track.

SMIN 42,284-B; SMIN 42,290-C

Right front view of Wright airplane on launching track, Orville seen leaning over pilot's seat.

SMIN 42,290; USAF 243399

Left front view of Wright airplane on launching track, Orville at front of machine with Maj. George O. Squier and Lt. Thomas E. Selfridge.

HAWBHP 78; SMIN 42,288-A

Front view of Wright airplane landing.

SMIN 43,190

Orville and Augustus Post, Aero Club of America secretary, full length, in front of Signal Corps tent, September 5.

LC-JONES; SMIN 42,288-B; SMIN 42,289-G

Right front view of Wright airplane in flight, Fort Myer buildings in background, September 8.

ASMEJ, v. 30, Dec. 1908: b. 1642-1643; CLHAGW facing 168; APGAFM 36; Sat Eve Post, v. 201, July 14, 1928: 19; SMINAR 1908: b. 134-135; USAF 52661

Group photograph of high-ranking government officials and military officers gathered around Wright airplane awaiting flight by Orville.

LC-JONES: MILWA v. 2:159; SMIN 31,246-F

Orville seated at the controls of the Wright airplane, with Lt. Frank P. Lahm, passenger, September 9.

SMIN 42,589

Wright airplane taking off from launching track on flight, September 9.

LC-BAIN

Front view of Wright airplane in flight, Fort Myer buildings and trees in background, Orville's flight of 6 minutes, 24 seconds with Lt. Frank P. Lahm, September 9.

LC-JONES; Aerospace, 1943: CXXV; USAF 9593 A.S.; U.S. Air Services, v. 16, Sept. 1931: 22. Similar: USAF 9592 AS.; USAF 16764

Group photograph of high-ranking government officials and military officers conversing and inspecting Wright airplane following flight of 6 minutes, 24 seconds by Orville with Lt. Frank P. Lahm, September 9.

LC-JONES; SMIN 42,255; U.S. Air Services, v. 16, Sept. 1931: 21

Front view of Orville's flight of 1 hour, 2 minutes, 15 seconds on September 9.

LC-JONES; MCFWP 159; SMIN 42,288-D

Front view of Orville in relatively low flight, with trees, grounds, and one of the gateway entrances to Fort Myer visible below, the flight lasting 1 hour, 2 minutes, 15 seconds, September 9.

LC-JONES; ASMEJ, v. 30, Dec. 1908: b. 1642-1643; Flight, v. 1, May 1, 1909: 251; HEGOV facing 81; GHUSAF 5; JOHHU 240; SMINAR 1908: b. 136-137; TILLMU 2; USAF 4282 AS.

Right front view of Orville circling parade ground, Fort Myer buildings visible in background, September 9.

LC-JONES; MCFWP 161; ASHWB 62; ASMEJ, v. 30, Dec. 1908: b. 1642-1643; COCKDH following 168; Flight, v. 1, May 1, 1909: 251; MILWA v. 2: 156; SMINAR 1908: b. 138-139; USAF 4280 AS.; YPHA 35. Similar, at higher altitude: CHBLWB facing 240; World's Work, v. 17, Nov. 1908: 10848

Side view of Wright airplane rising shortly after takeoff on flight of 1 hour, 2 minutes, 15 seconds on September 9.

LC-JONES; USAF 9580 AS.

Wright airplane in flight over Fort Myer parade ground, fort buildings in background below, mounted cavalryman in foreground at right, September 9.

LC-JONES; Popular Aviation, v. 3, Dec. 1928: 12; SMIN 42,288-C; USAF 9577 AS.

Seven views of Orville's flight of 62 minutes, 15 seconds on September 9.

World's Work, v. 17, Nov. 1908: 10849

Series of six photographs of Orville's flight of 1 hour, 10 minutes, 24 seconds, which set a new world flying endurance record, September 11.

USAF 9498 A.S.; USAF 9595 AS.; USAF 9597 A.S.; USAF 9599 A.S.; USAF 9690 A.S.

Series of seven photographs of Orville's flight of 1 hour, 10 minutes, 24 seconds on September 11.

LC-BAIN

Right front view of Wright airplane on launching track ready for takeoff, Orville and passenger, Maj. George O. Squier, seated in airplane, September 12.

APGAFM 36; ASMEJ v. 30, Dec. 1908:b. 1642-1643; BUFJM 14; Everybody's Magazine, v. 20, Jan. 1909: 110; Flight, v. 1, May 1, 1909: 252; Ill Aero Mitteil, v. 12, Mar. 10, 1909: 171; SMINAR 1908: facing 138

Right front view of Wright airplane on launching track, Orville at front of airplane supervising preparation for takeoff with Maj. George O. Squier as passenger, September 12.

LC-JONES; MCFWP 162; LOOWGF 7; USAF 9587 A.S. Similar: CAIAF 3; FRFH facing 178; USAF 9588 A.S.

Front view of Wright airplane, Orville flying with Maj. George O. Squier as passenger, in the air 9 minutes, 6 1/3 seconds, establishing a new world record for flight with two men, September 12.

LC-JONES; MCFWP 163; ASMEJ, v. 30, Dec 1908: b.1642-1643; Everybody's Magazine, v. 20, Jan. 1909: 104; Flight, v. 1, May 1, 1909:253; GSPA 36; GSWB 23; HAWBHP 77; Nat Aero Assn Rev, v. 3, Dec. 1925: 189; SMIN 42,204-A; SMINAR 1908: b. 138-139; TILLMU 41; USAF 4613 A.S. Similar: USAF 9583

Side view from below of Wright airplane in level flight overhead, September 12.

LC-JONES; ASMEJ, V. 30, Dec. 1908:b.1642-1643; Flight, v. 1, May 1, 1909:252; CSWFAF 16; GSIA 152; GSREA b. 272-273; GSWB 23; SMINAR 1908: b. 136-137. Similar, trees and road in background ASMEJ, v. 30, Dec. 1908:b. 1642-1643; Flight, v. 1, May 1909:252; SMINAR 1908:b.136-137

Series of views of Wright airplane in flight—front, overhead, left side, right side, and underside.

SMIN 42,284 (A, D, J); SMIN 42,285 (C, F, H); SMIN 42,286 (A, F); SMIN 42,287 (C, G, H); SMIN 42,288-F; SMIN 42,289 (A, F); SMIN 42,290-H

Rear view of Wright airplane in flight.

MCFWP 160; SMIN 42,284-C; SMIN 76-17460

Orville in front of Wright airplane adjusting motor, Lt. Thomas E. Selfridge seated in airplane, September 17.

SMIN 31,990-A

Orville seated at controls of Wright airplane on starting track ready for takeoff, Lt. Thomas E. Selfridge, passenger, seated at his right, September 17.

MCFWP 164; Aeronautics, v. 5, Apr. 1909: 145; Bee-Hive, v. 28, Jan. 1953: 12; CLHAGW b. 168-169; HA WBHP 80; SMIN 42,225-C; SMIN 42,286-D; SMIN 42,869-E; TILLMU 44; USAF 48608; WODKH b. 220-221; World's Work, v. 56, Sept. 1927: 518