

## *1902, Kitty Hawk, North Carolina*

Wilbur in Kill Devil Hills camp building before remodeling, interior crowded with supplies and equipment and skids and front rudder of 1901 glider suspended from the rafters at right, August 29.

**LCPWOW 120; MCFWP 35; COCKDH following 168; EWBNM 28; Life, v. 35, Dec. 7, 1953: 170; MOORKH 129; Pop Sci, v. 114, Apr. 1929: 43; WODKH facing 101**

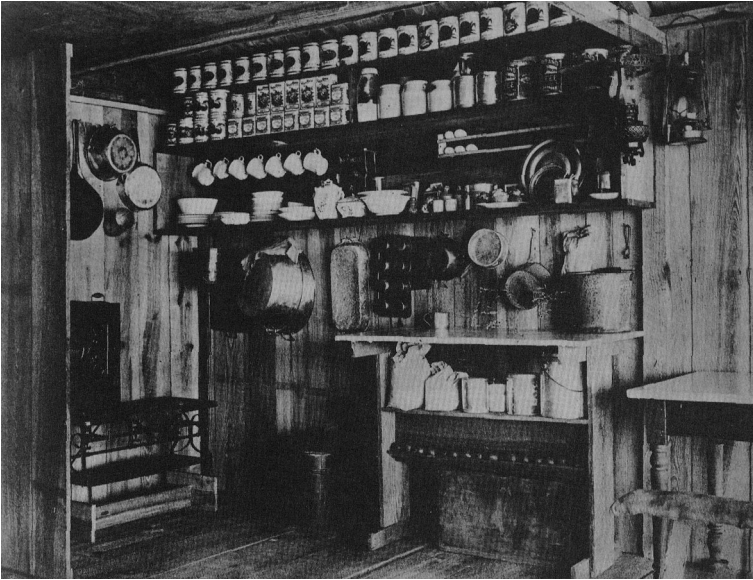
The "patent" beds built under the roof of the remodeled camp building, September 6.

**LCPWOW 120; MCFWP 37; Air Force, v. 36, Dec. 1953: 39; BBAKH**

Kitchen of camp building with neatly arranged wall shelves holding dishes, canned foods, and other provisions.

**LC-USZ62-65138; LC-W86-5; MCFWP 38; Aero J, v. 20, July/Sept. 1916: b. 80-81; Air Force, v. 36, Dec. 1953: 39; BBAKH EWBNM 29; KELWB b. 148-149; Pop Sci, v. 114, Apr. 1929: 43**

The kitchen of the Wright camp at Kill Devil Hill, 1902.



Front view of Kill Devil Hill Life Saving Station, with four crew members wearing white hats and jackets standing in doorway and a boat near outer wall at right.

**LC-W86-9; COCKDH following 168**

Side view of Dan Tate, on left, and Wilbur, on right, flying the 1902 glider as a kite, September 19.

**LC-USZ62-56242; LC-W86-40; MCFWP 39; BBAKH, Flight, v. 1, Oct. 23, 1909: 673; HAWBHP 63; KELWB b. 148-149; SMIN A38,722; Soaring, v. 38, May 1974: 27; W Soc Eng J, v. 8, Aug. 1903: 402; WIGLIG b. 548-549**

Front view of Wilbur, on left, and Dan Tate flying the glider as a kite, September 19.

**LCPWOW 120; MCFWP 40; SMIN 50,325**

Dan Tate, on left, Orville, and Wilbur carrying glider uphill (an unusual shot), October.

**LCPWOW 120; MCFWP 46; DOBOHA 162; SMIN 33,951-G**

A glide with the double-rudder machine moving to left, north slope of Big Kill Devil Hill, October 2.

**LC-USZ62-56244; LC-W86-39; MCFWP 41; Am Aeronaut, v. 1, Jan. 1908: 9; GSAHS facing 81; GSREA b. 44-45; GSIA 39; HAWBHP 63; RGSPA, v. 14, Nov. 30, 1903: 1140; SMIN A42,412-E; Soaring, v. 38, May 1974: 31; W Soc Eng J, v. 8, Aug. 1903: 403**

Front view of Orville landing the glider, showing sand spray thrown up by skids and right wing tip, October 2.

**LCPWOW 120; MCFWP 42; RGSPA, v. 14, Nov. 30, 1903: 1141**

Group of six, left to right: Octave Chanute, Orville, Wilbur, Augustus M. Herring, George A. Spratt, and Dan Tate, seated in front of glider at top of Little Hill, October 10.

**LCPWOW 120; MCFWP 59; Aviation Quarterly, v. 2, No. 4: 359; COCKDH following 168; Pop Sci, v. 114, Apr. 1929: 42; RGSPA, v. 14, Nov. 30, 1903: 1136**

Rear view of Wilbur gliding from No. 2 Hill west of camp building, October 10.

**LCPWOW 120; MCFWP 51; Aviation Quarterly, v. 2, No. 4: 370; DOBOHA 162; GSREA b. 44-45; GSBHF 30; GSIA 39; GSPA; HAWBHP 65; HAYPA 113; RGSPA, v. 14, Nov. 30, 1903: 1138; SMIN A42,668a; Soaring, v. 38, May 1974: 34; W Soc Eng J, v. 8, Aug. 1903: 404**

Wilbur gliding downhill to right, Dan Tate running beside machine, Big Kill Devil Hill, October 10.

**LC-USZ62-66324; LC-W86-6; MCFWP 48; MEFMF facing 38; Soaring, v. 38, May 1974: 29**

Left view of Wilbur gliding, Kitty Hawk Life Saving Station and Weather Bureau buildings in distance, October 10.

**LC-W86-3; MCFWP 52; Aero J, v. 20, July/Sept. 1916: b. 80-81; Aviation Quarterly, v. 2, No. 4 368; GSEFM; HAWBHP 65; SMIN A42,667-A**

Wilbur in glider turning rapidly to left, October 10.

**LC-USZ62-663323; LC-W86-6; Am Aeronaut, v. 1, Jan. 1908: 9**

Wilbur moving forward in glider with a single rear rudder, north slope of Big Kill Devil Hill, October 10.

**LCPWOW 120; MCFWP 50; Air Force, v. 36, Dec. 1953: 36; BBAKH; Flight, v. 1, Nov. 15, 1909: 722; Flying, v. 2, Dec. 1913: 11; GSAHS facing 96; GSREA b. 44-45; GSIA 39; GSPA 23; GSWB 7; HARFF 50; MCMWB 118; PEPHO facing 21; Pop Sci, v. 114, Mar. 1929: 42; TAPHF 23; W SOC Eng J, v. 8, Aug. 1903: 401**

Wilbur gliding to right, with bottom of glider and Wilbur's legs visible, October 10.

**LC-USZ62-56233; LC-W86-13**

Side view of Wilbur gliding in level flight moving to right near bottom of Big Hill, October 10.

**LC-USZ62-56235; LC-W86-12; MCFWP 44; Aero J V. 20, July/Sept. 1916: h. 80-81; Lithopinion, v. 6 Winter 1971: 63; SMIN A42,412-C. Similar: Soaring, v. 38, May 1974: 26**

Start of a glide, Wilbur in motion at left holding one end of glider—rebuilt with single vertical rudder—Orville lying prone in machine, and Dan Tate at right, October 10.

**LC-USZ62-56227; LC-W86-1; MCFWP 43; ASHWB 28; Aviation Quarterly, v. 2, No. 4: 367; BBAKH; Flight, v. 1, Nov. 15, 1909: 722; GANAC 35; GSEFM; GSIA 39; GSWB 7; HARFF 49; HAWBHP 64; HILBW 31; MEFMF facing 38; SMIN A-4377-A; Soaring, v. 38, May 1974: 32; USAF 48617; W Soc Eng J, v. 8, Aug. 1903: 408; YPHA 32**

Orville skimming the ground, dark shadows of wings visible in front of glider, October 10.

**LCPWOW 120; MCFWP 45; Am Aeronaut, V. 1, Jan. 1908: 8; HILBW 28; Soaring, v. 38, May 1974: 34; W Soc Eng J, v. 8, Aug. 1903: 405**

Glider shown turning rapidly to left, the first photograph of a Wright glider in a turn, October 10.

**LCPWOW 120; MCFWP 49; RGSPA, v. 14, Nov. 30, 1903: 1139**

Rear view of glider on ground after landing, operator still lying prone in glider.

**LC-W86-4; RGSPA, v. 14, Nov. 30, 1903: 1137**

Three-quarter rear view of glider on ground following landing, operator in prone position, Dan Tate at rear left end of glider.

**SMIN 33,951**

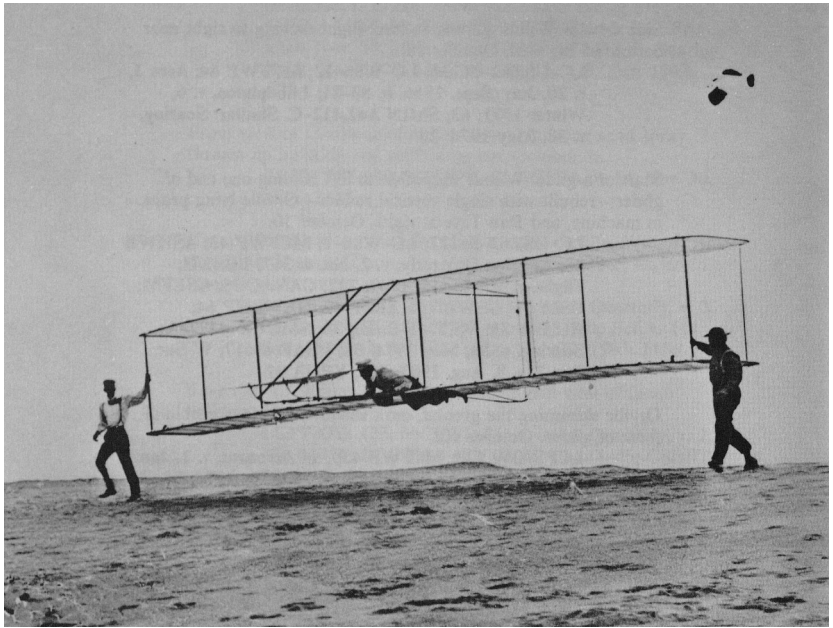
Glider in level flight skimming the ground, moving to left.

**SMIN 33,951-E**

Wilbur gliding down steep slope, in level flight to the right, Big Kill Devil Hill, October 10.

**LC-USZ62-56228; LC-W86-11; LC-BAIN; MCFWP 47; Aero J, v. 20, July/Sept. 1916: h. 80-81; L'Aerophile, v. 11, Aug. 1903: 179; Am Mag, V. 67, Apr. 1907: 611; Aviation Quarterly, V. 2, No. 4: 360; DAIHF 1948:b. 104-105; GSREA h. 44-45; HGCA 45; HSMHSA facing 179; MILWA v. 2101; Sat Eve Post, V. 201, July 7, 1928: 10; SMIN A38,530-M; Soaring, v. 38, May 1974: 36; W Soc Eng J, v. 8, Aug. 1903: 406; World's Work, v. 20, Aug. 1910: 13312; World's Work, v. 56, Sept. 1927: 514; YPHA 32**

Orville beginning a glide, with Wilbur at his right and Dan Tate at his left, on the sands of Kitty Hawk, October 10, 1902.



Wilbur gliding, in level flight, Dan Tate running to left of machine, October 10.

**LCPWOW 120; MCFWP 48; Am Aeronaut, v. 1, Jan. 1908: 10; RGSPA, v. 14, Nov. 30, 1903: 1138**

Series of photographs of Wright gliding experiments taken by Octave Chanute's camera during Chanute's October 5-14 visit to Kitty Hawk, where he witnessed gliding experiments, October 8, 9, and 10.

**SMIN 33,950, -A, -C, -D, -L, -M; SMIN 33,951, -A, -B, -C, -D, -E, -F, -G, -J**

Wilbur gliding, in level flight, single rear rudder clearly visible, October 17.

**LC-W86-10**

Orville on left and Dan Tate at right launching glider downhill with Wilbur on board, October 18.

**LCPWOW 120; MCFWP 56; WODKH b. 160-161**

Rear view of Wilbur making right turn in glide from No. 2 Hill, right wing tipped close to ground, October 24.

**LC-USZ62-56236; LC-W86-7; LC-BAIN; MCFWP 57; Aero J, v. 20, July/Sept. 1916: b. 80-81; Am Mag, v. 67, Apr. 1907: 624; Aviation Quarterly, v. 2, No. 4: 368; EWBNM 31; Flight, v. 1, Oct. 30, 1909: 693; GANAC 35; HARFF 51; HAWBHP 65; HILBW 29; MILWA v. 2:101; Revue de l'aviation, v. 2, May 1907: 3; Sat Eve Post, v. 201, July 7, 1928: 10; SMIN A43,395-A; W Soc Eng J, v. 8, Aug. 1903: 409**

Orville making right turn, showing warping of wings, hill visible in front of him, October 24.

**LC-USZ62-66323; LC-W86-8; MCFWP 58**