

Appendix E
-Draft, Subject to Change-

Analysis of Flood Insurance Claims in the Delaware River Basin

September 2004, Ivan

-

April 2005 Flood

-

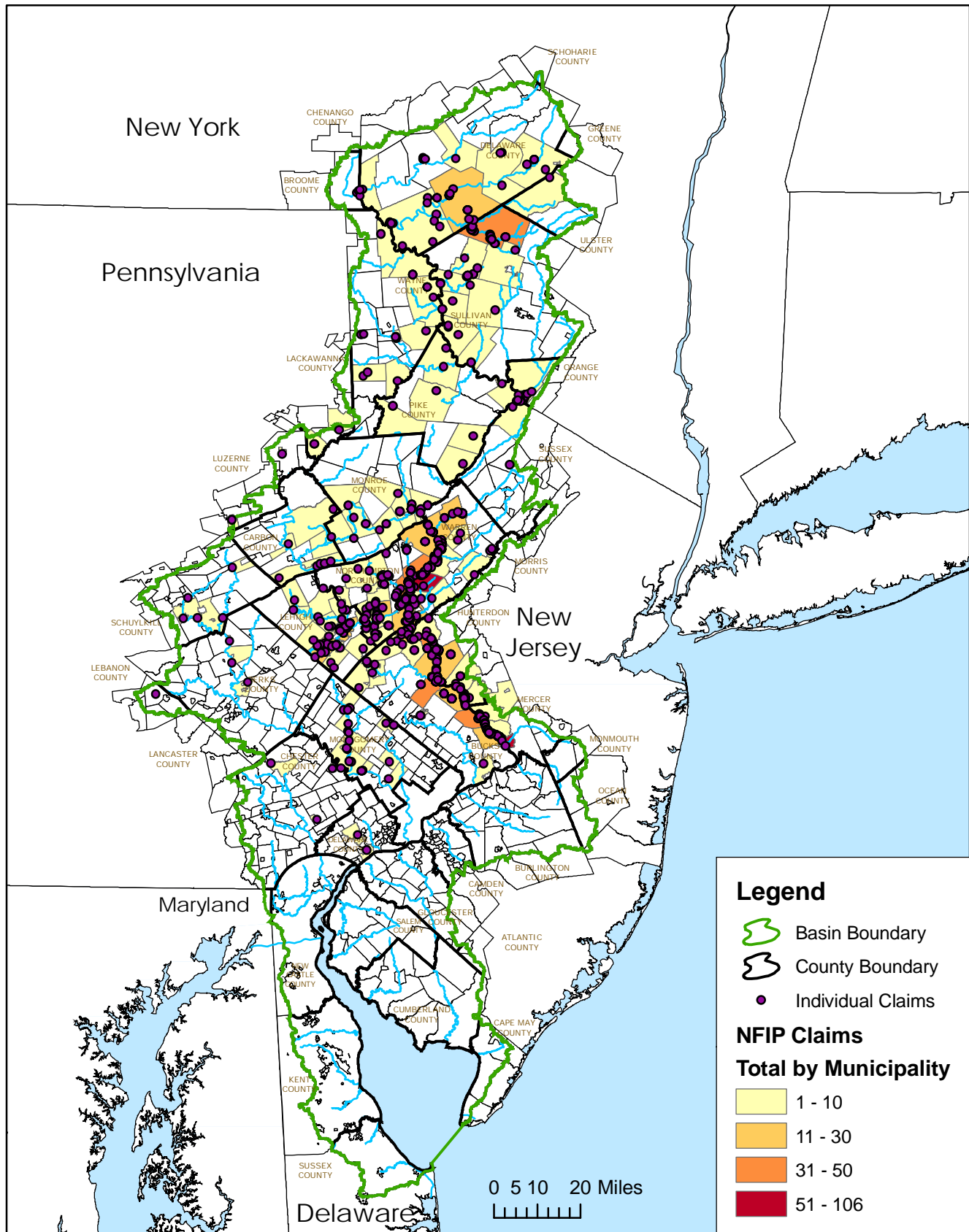
June 2006 Flood

Prepared by DRBC Operations Staff
April 2007

Full report can be viewed online at: http://www.state.nj.us/drbc/Flood_Website/floodclaims_home.htm

National Flood Insurance Claims in the Delaware River Basin (by Municipality)

September 2004 Event - Ivan

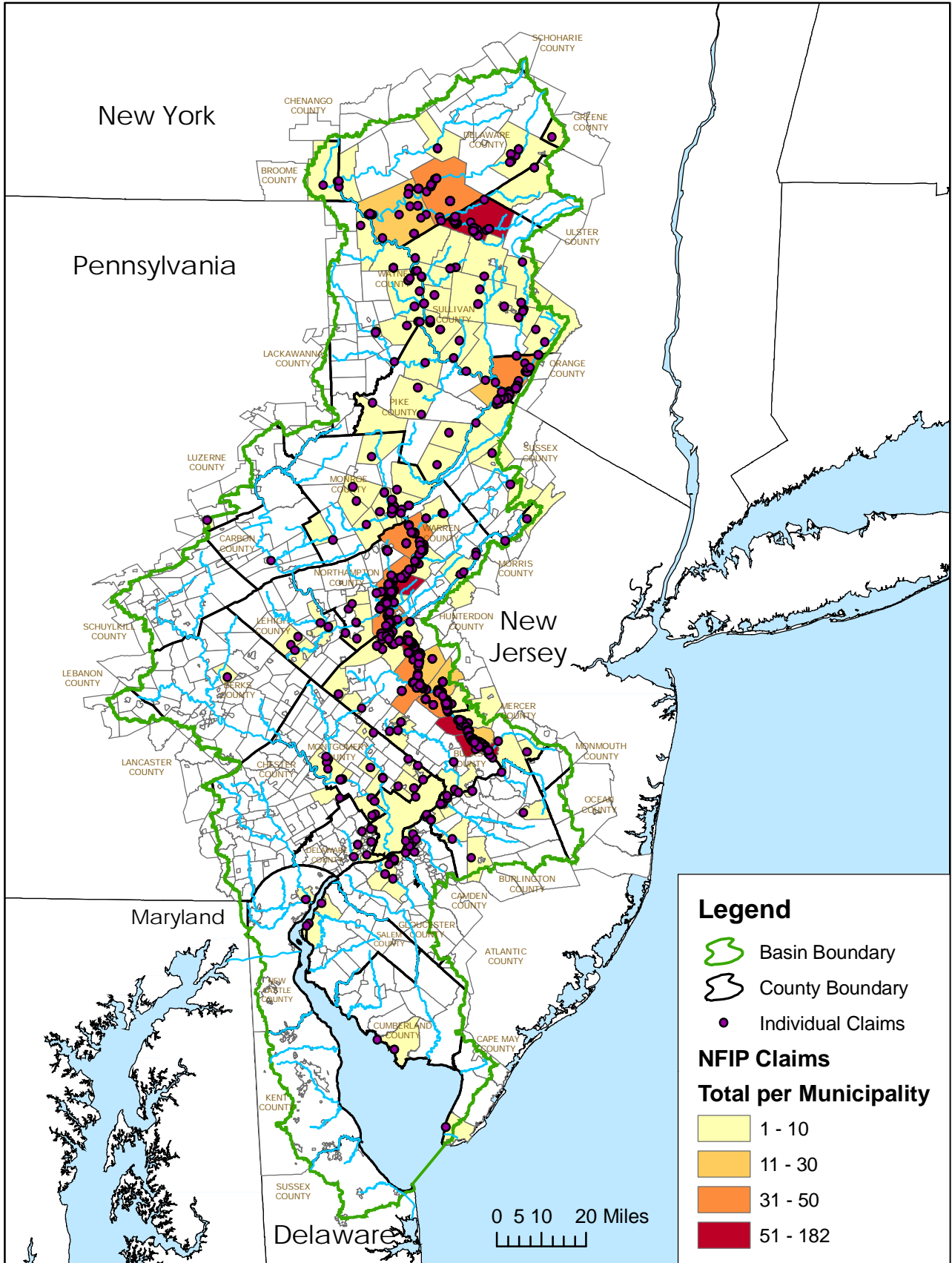


Source: Federal Emergency Management Agency (FEMA). Claims represented include all National Flood Insurance Program (NFIP) closed claims as of 02/28/07 for dates of loss listed 9/17/04 - 9/20/04.

Prepared by Delaware River Basin Commission Staff, April 2007.

National Flood Insurance Claims in the Delaware River Basin (by Municipality)

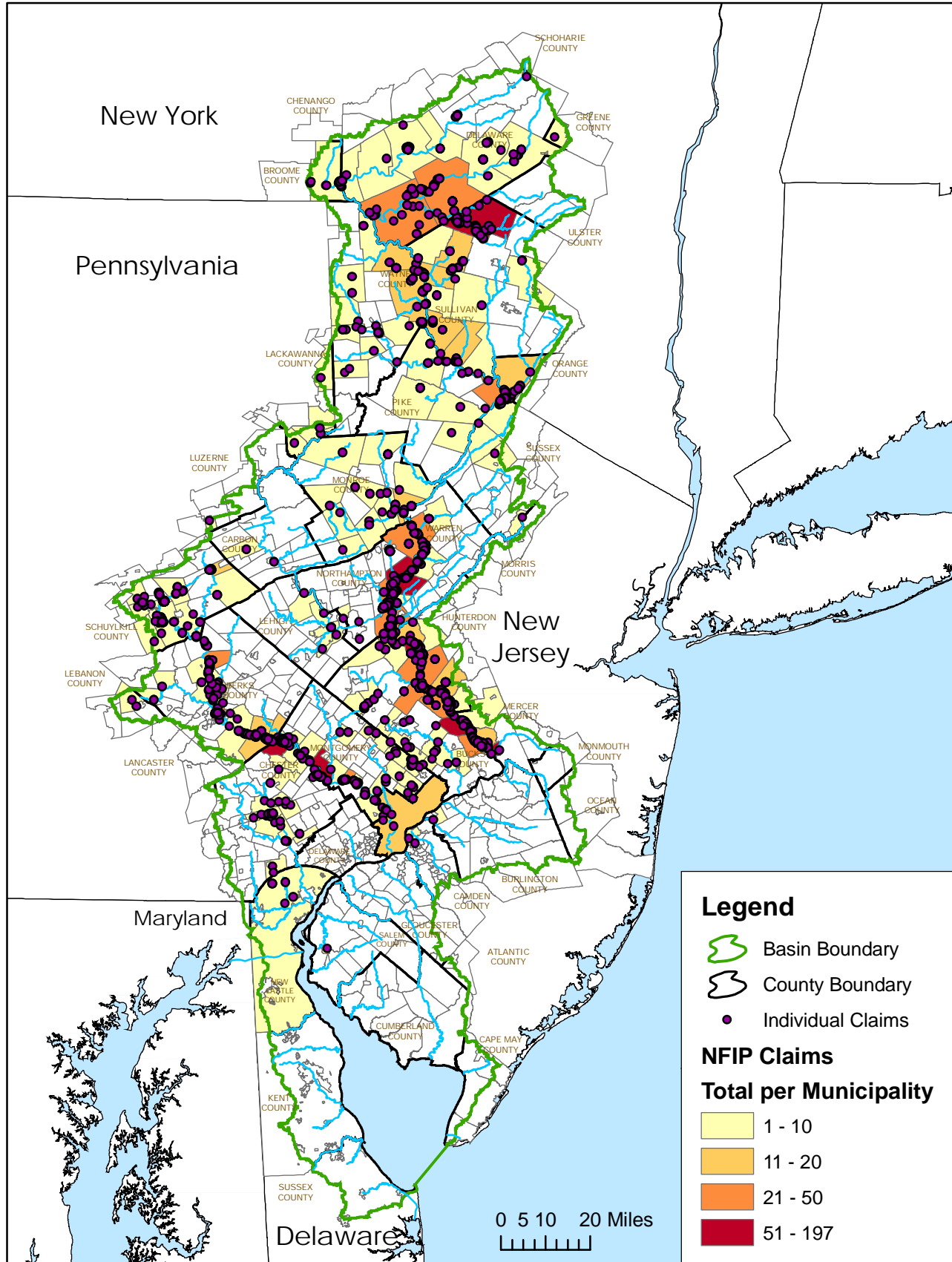
April 2005 Event



Source: Federal Emergency Management Agency (FEMA). Claims represented include all National Flood Insurance Program (NFIP) closed claims as of 02/28/07 for dates of loss listed 4/2/05 - 4/5/05.

Prepared by Delaware River Basin Commission Staff, April 2007.

National Flood Insurance Claims in the Delaware River Basin (by Municipality) June 2006 Event



Source: Federal Emergency Management Agency (FEMA). Claims represented include all National Flood Insurance Program (NFIP) closed claims as of 02/28/07 for dates of loss listed 6/26/06 - 6/30/06.

Prepared by Delaware River Basin Commission Staff, April 2007.