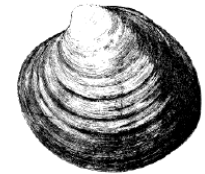
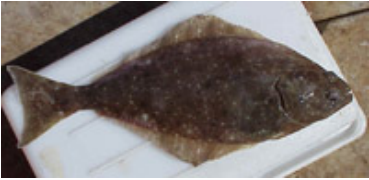


# Limited Access Privilege Programs

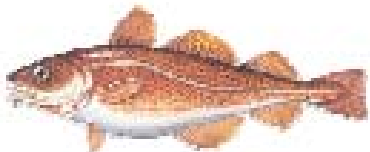
## Current (12)

- Surf Clam/Ocean Quahog
  - Wreckfish
  - Halibut & Sablefish
  - Western Alaska CDQ<sup>1</sup>



- Bering Sea AFA Pollock Cooperatives
  - Pacific Sablefish Permit Stacking
- Georges Bank Cod Hook Gear Sector<sup>1</sup>
- Georges Bank Cod Fixed Gear Sector<sup>1</sup>
  - Bering Sea King & Tanner Crab
  - Gulf of Mexico Red Snapper IFQ
- Central Gulf of Alaska Rockfish Pilot
- Bering Sea Groundfish (Non-Pollock) Cooperatives

<sup>1</sup> CDQ and Sectors are included for LAPPs goal

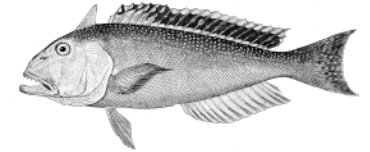


April 2008



© AFSC/Graham 1997

# Limited Access Privilege Programs Expected in Future (5)



- Tilefish
- Scallop General Category IFQ
  - Gulf of Mexico Grouper IFQ
- South Atlantic Snapper Grouper
- West Coast Trawl Groundfish TIQ



April 2008