

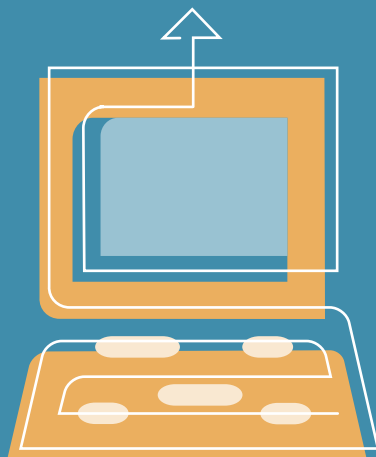
# UNEMPLOYMENT INSURANCE

Apply for unemployment  
benefits on-line with

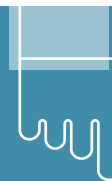


[www.edd.ca.gov/eapply4ui](http://www.edd.ca.gov/eapply4ui)

Available 24 hours a day,  
in English and Spanish



**EDD** Employment  
Development  
Department  
State of California



## How to File a Claim

### On-line

The fastest way to file for  
Unemployment Insurance (UI) is  
on-line with **eApply4UI** at  
[www.edd.ca.gov/eapply4ui](http://www.edd.ca.gov/eapply4ui)

### Telephone

Call toll-free, anywhere in the U.S.

- English: 1-800-300-5616
- Español: 1-800-326-8937
- 粵語: 1-800-547-3506
- 國語: 1-866-303-0706
- TIẾNG VIỆT: 1-800-547-2058
- TTY: 1-800-815-9387

### Mail or Fax

You can also file using a paper  
application (DE 1101), available  
on-line at [www.edd.ca.gov](http://www.edd.ca.gov).

## More Information

The UI program provides benefits to  
unemployed individuals. Visit EDD's Web  
site at [www.edd.ca.gov](http://www.edd.ca.gov) for more  
information, including frequently asked  
questions such as:

- General UI information
- The best time to call EDD
- The status of your UI check
- How to get a Personal Identification  
Number (PIN) to access claim  
information