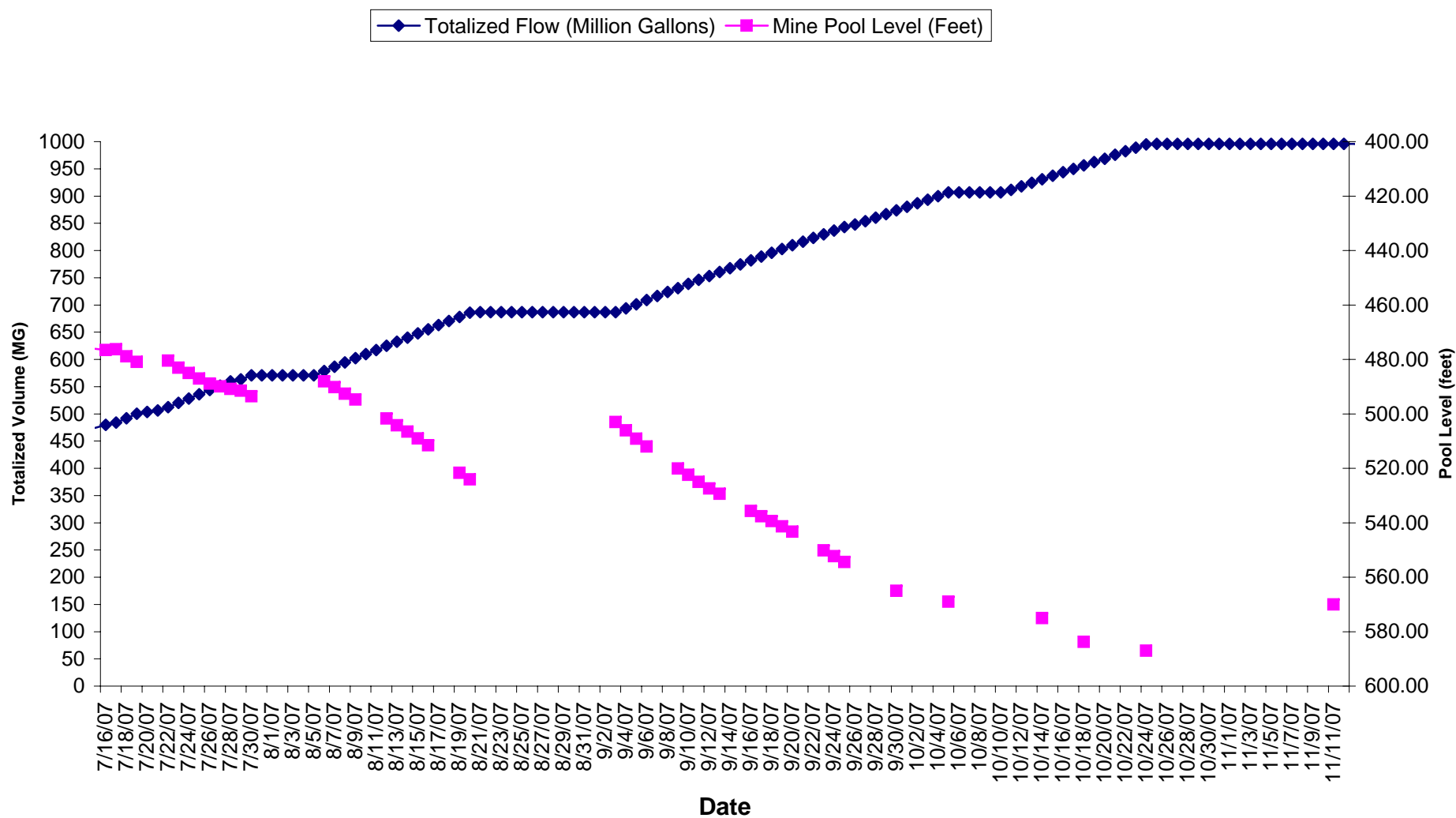
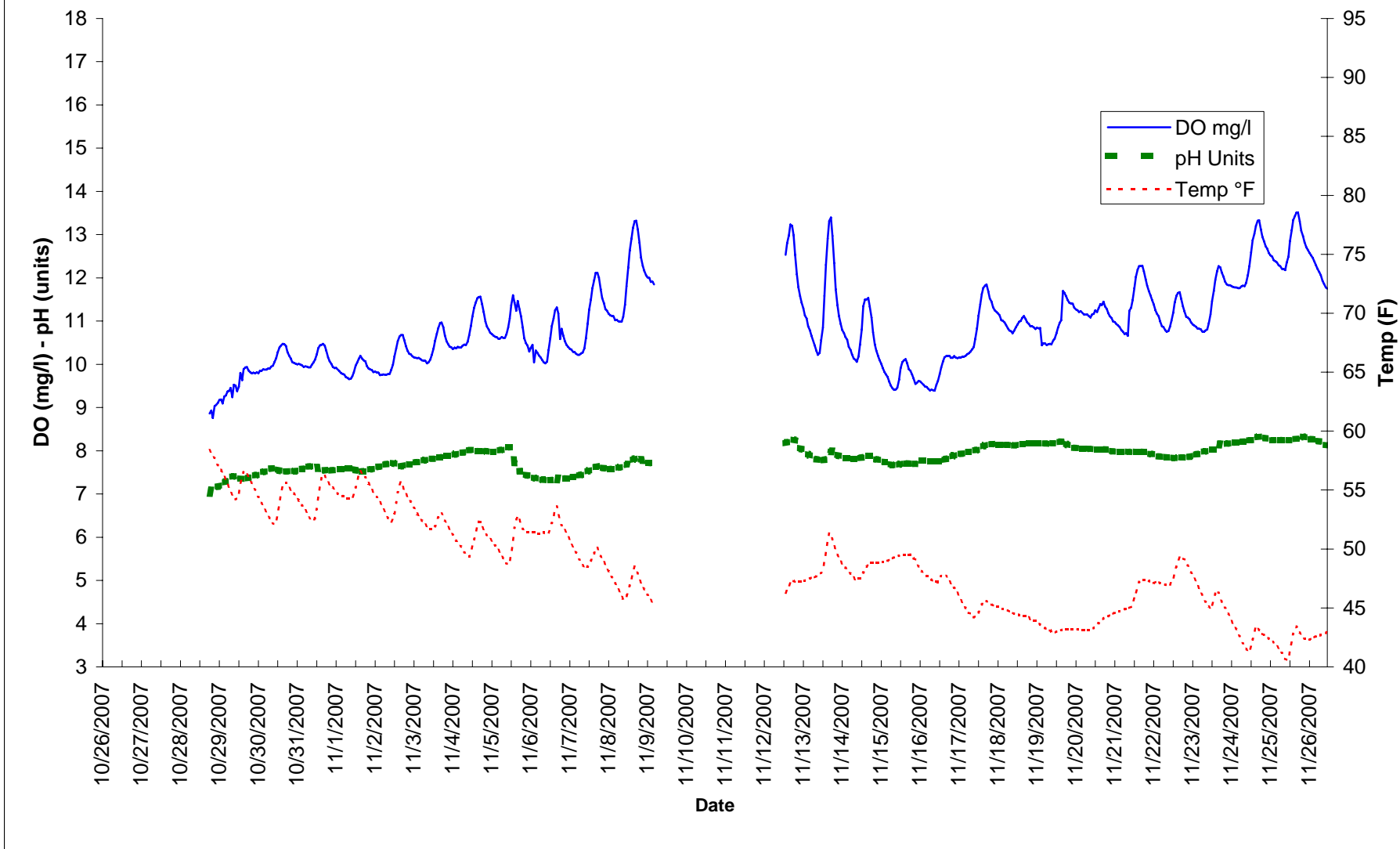


Wadesville Mine Water Pumped Volume and Pool Level

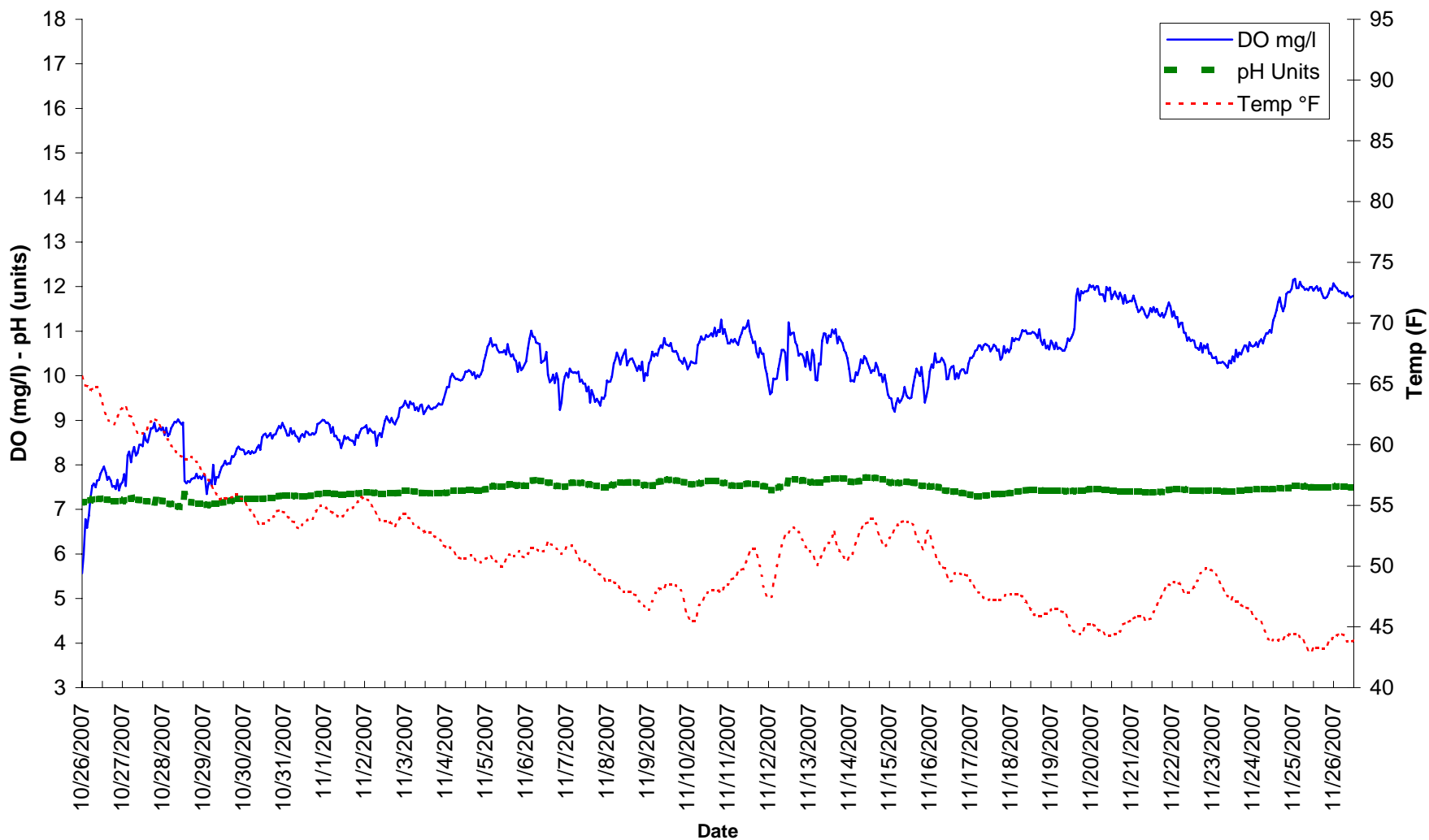


Limerick Intake DO, Temp and pH Data October 26 through November 26 2007

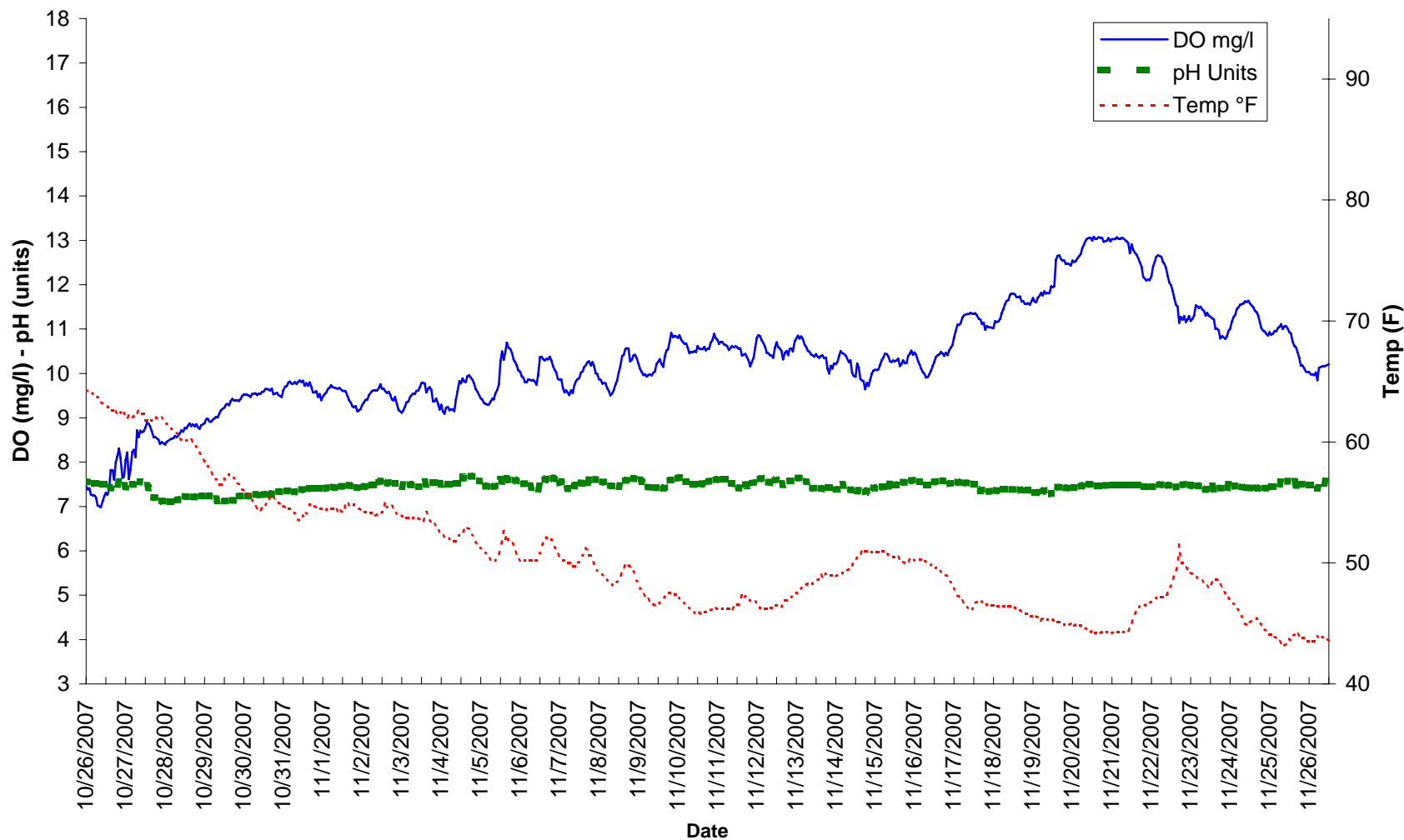


Oct 23 through Oct 28 equipment failure
 Nov 9 through Nov 12 equipment failure

Black Rock Dam DO, Temp and pH Data October 26 through November 26 2007



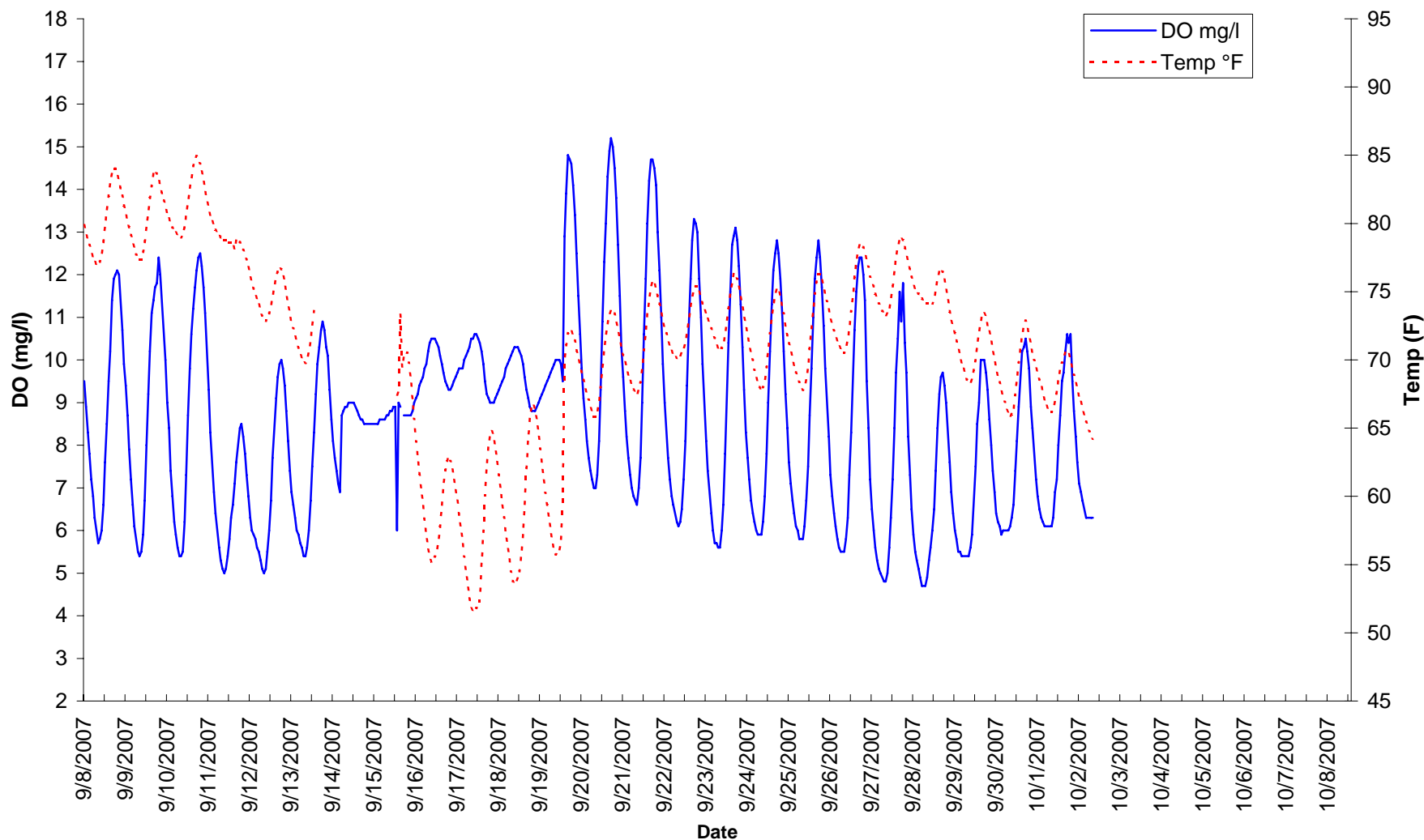
Norristown Pool DO, Temp and pH Data October 26 through November 26 2007



PA American Intake DO, Temp and pH Data October 26 through November 26 2007

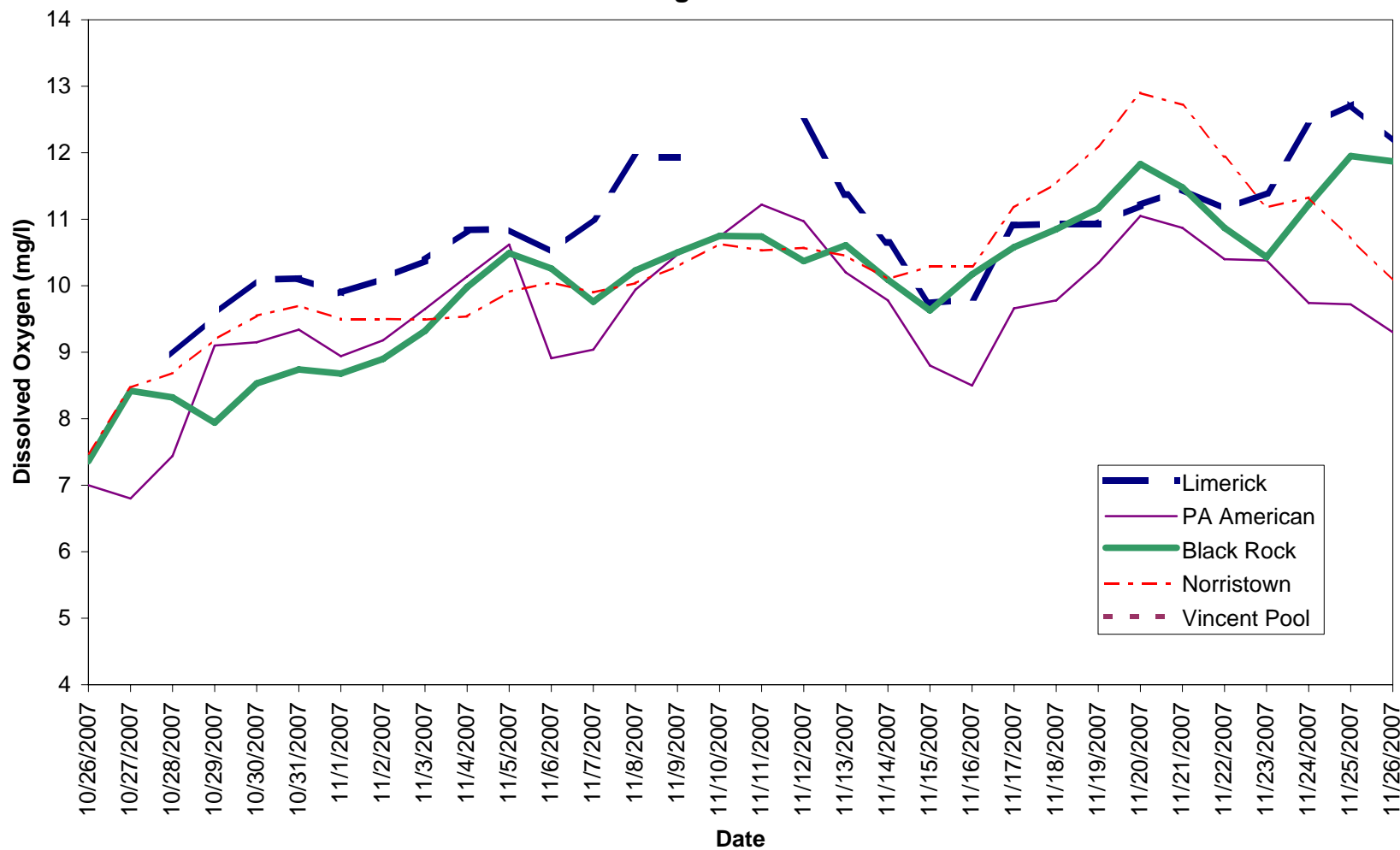


Vincent Dam DO and Temp Data September 8 through October 8 2007



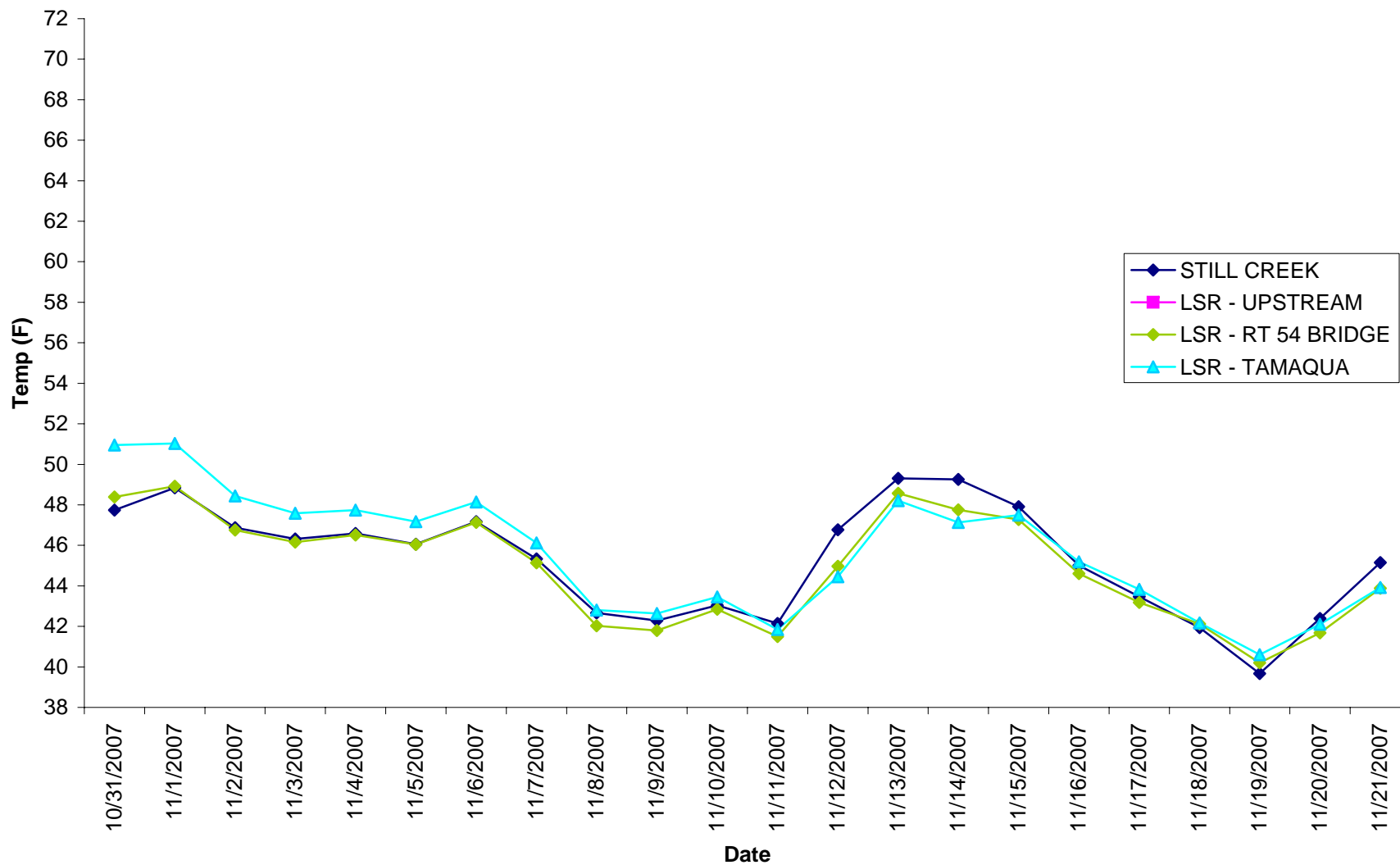
Provisional data provided by the USGS when available
 Data interruptions due to pump intake sedimentation and instrument malfunction
 Vincent Dam data collection discontinued October through March by USGS

Mean Daily Schuylkill River Dissolved Oxygen October 26 through November 26 2007



Vincent Dam data provided by USGS when available
 Vincen Dam data collection discontinued by USGS October through March
 Oct 22 through Oct 28 equipment failure at Limerick
 Oct 9 through Oct 12 equipment failure at Limerick

Still Creek & Little Schuylkill River Daily Average Temperatures November 2007



October 31 through November 21 equipment failure at LSR Upstream

Schuylkill River & E. Norwegian Creek Daily Average Temperatures November 2007

