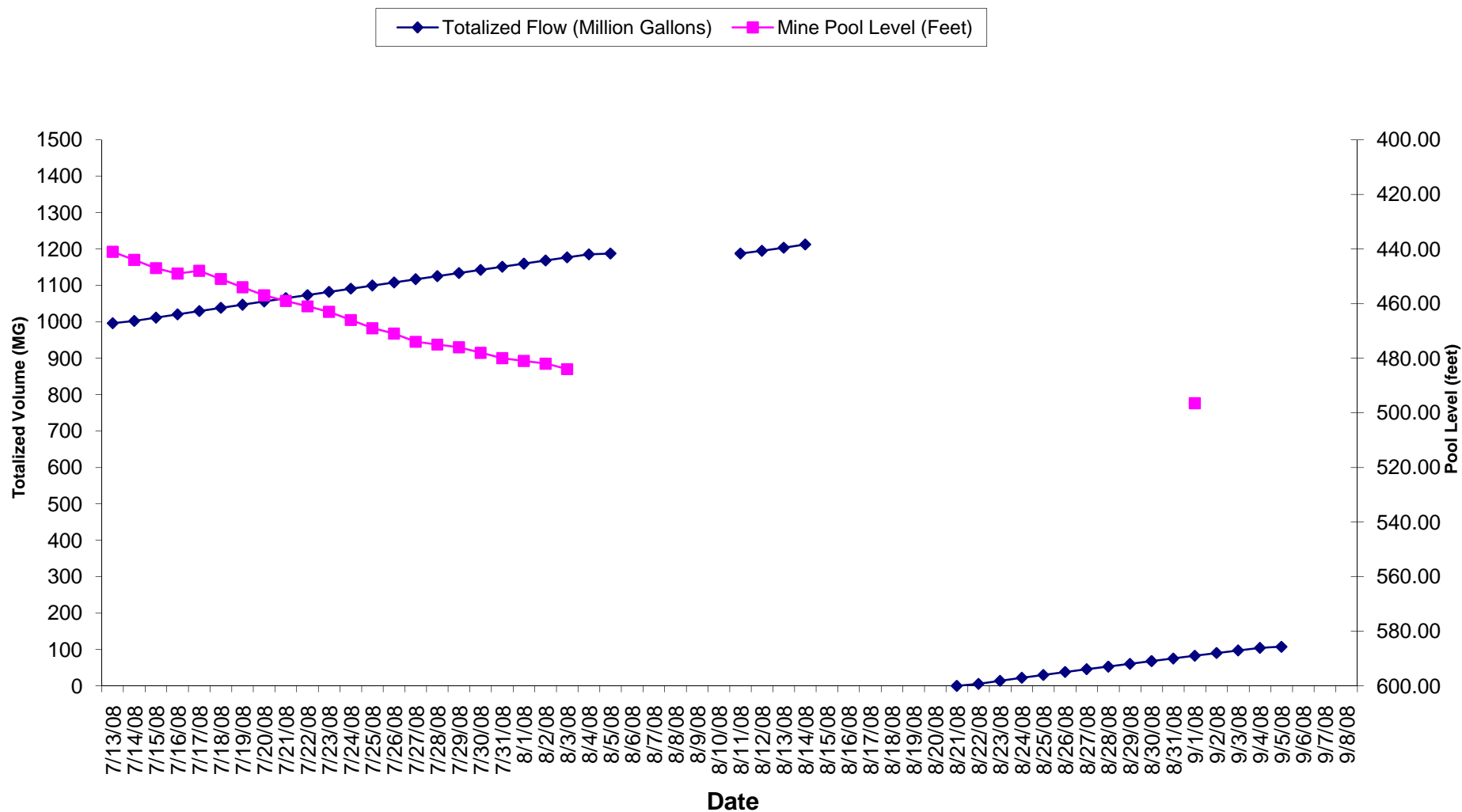


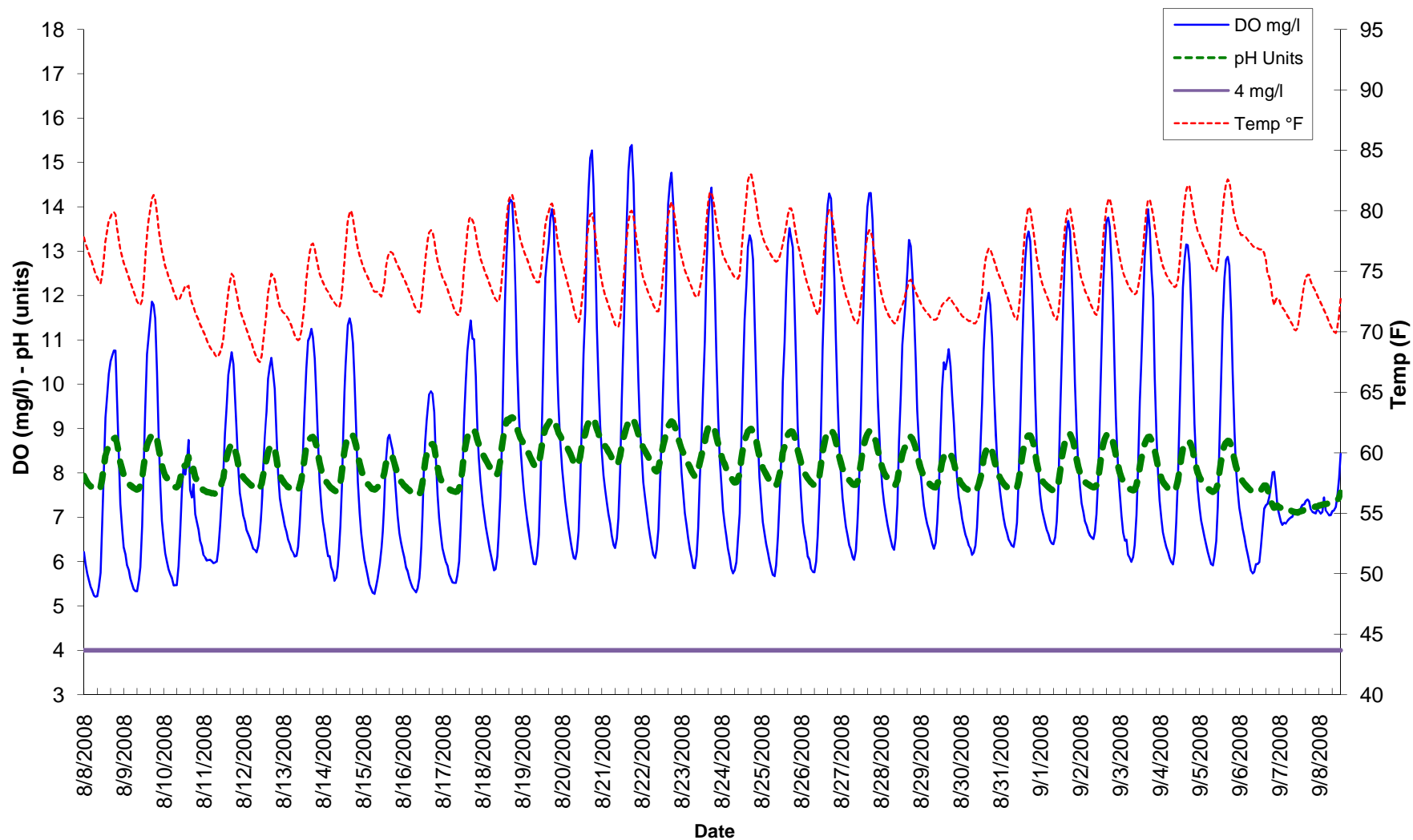
Wadesville Mine Water Pumped Volume and Pool Level

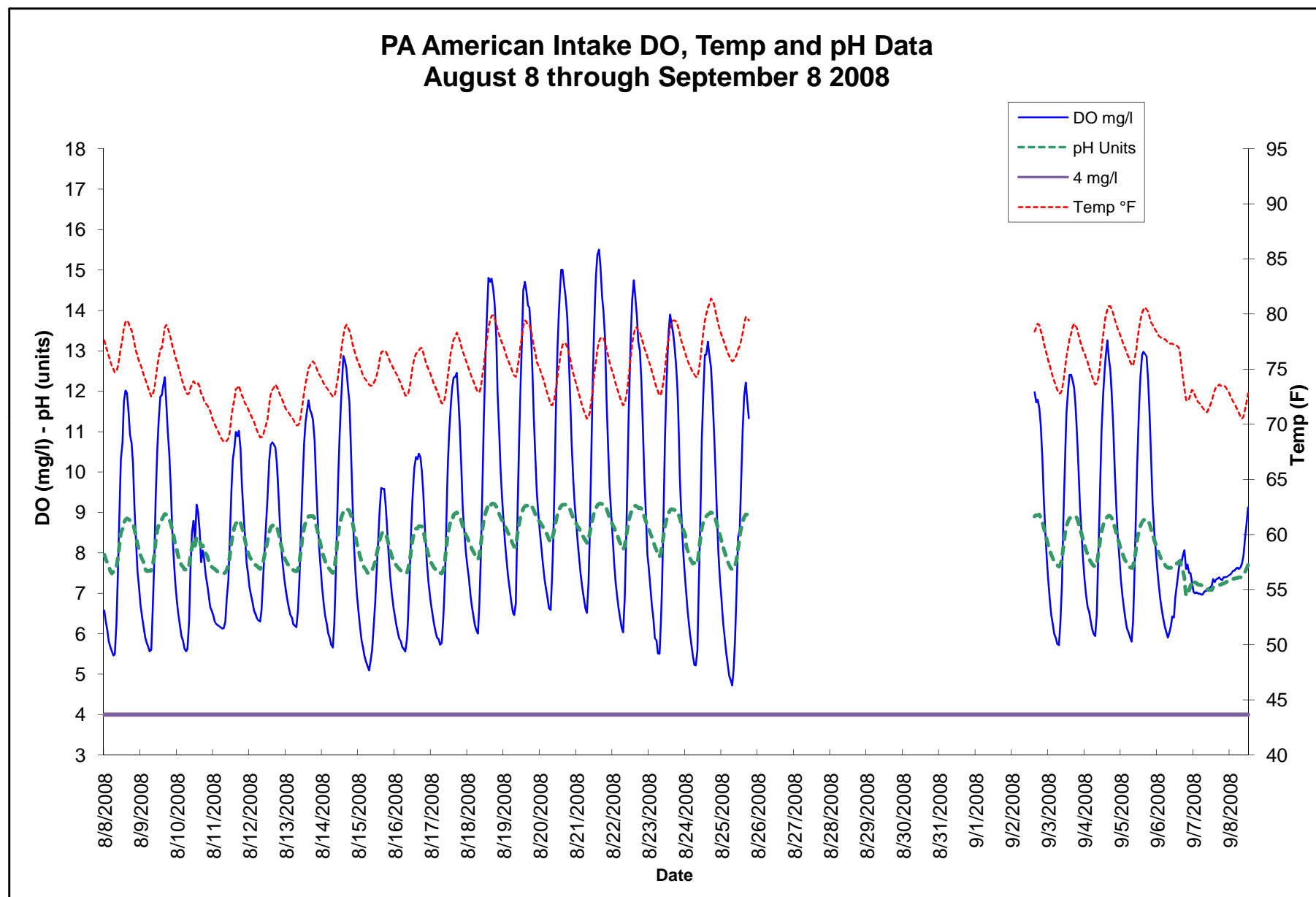


Pumps shutdown at noon on 8-5-2008

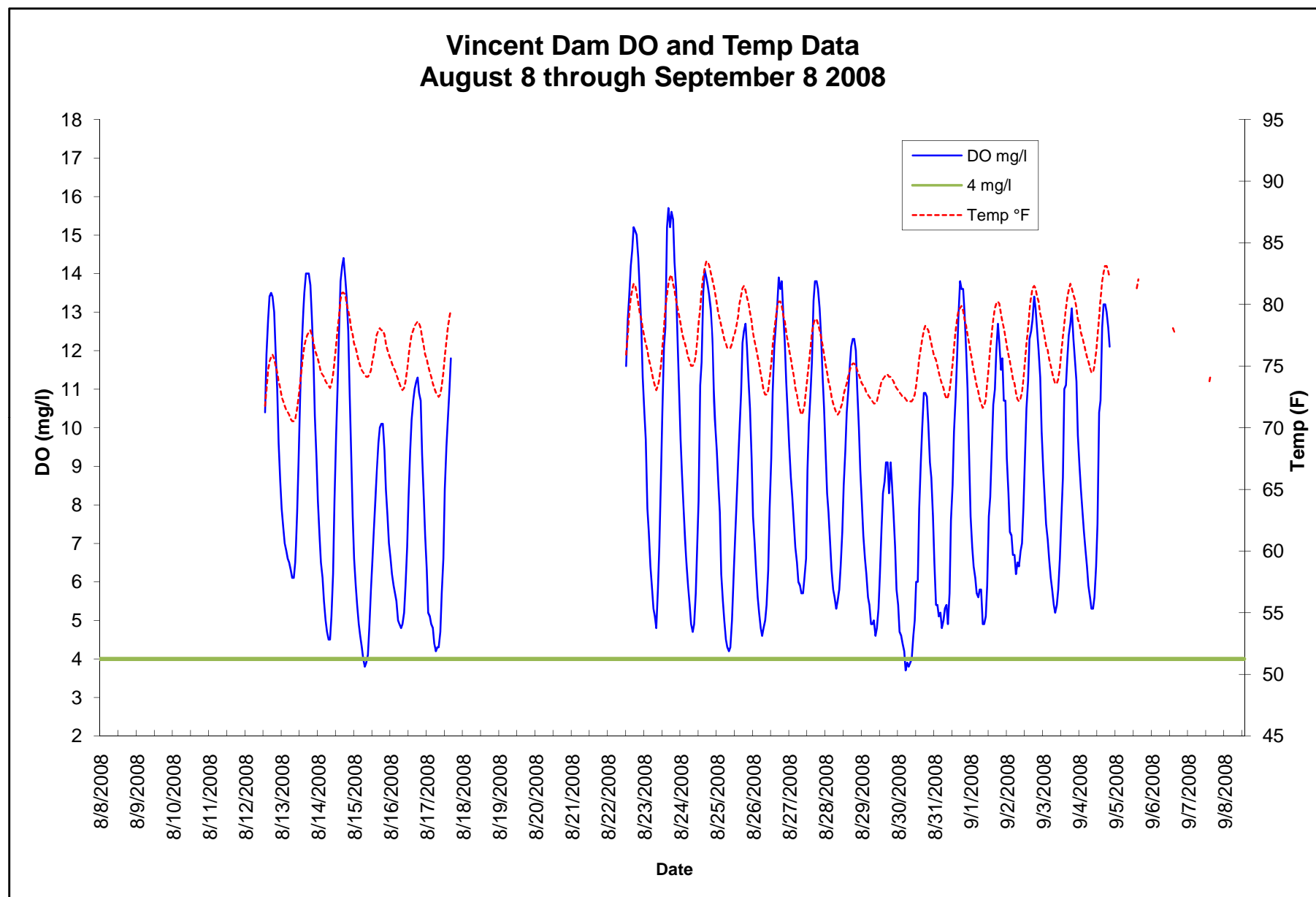
August 21 new meter installed - Totalizer reset to 0

Limerick Intake DO, Temp and pH Data August 8 through September 8 2008



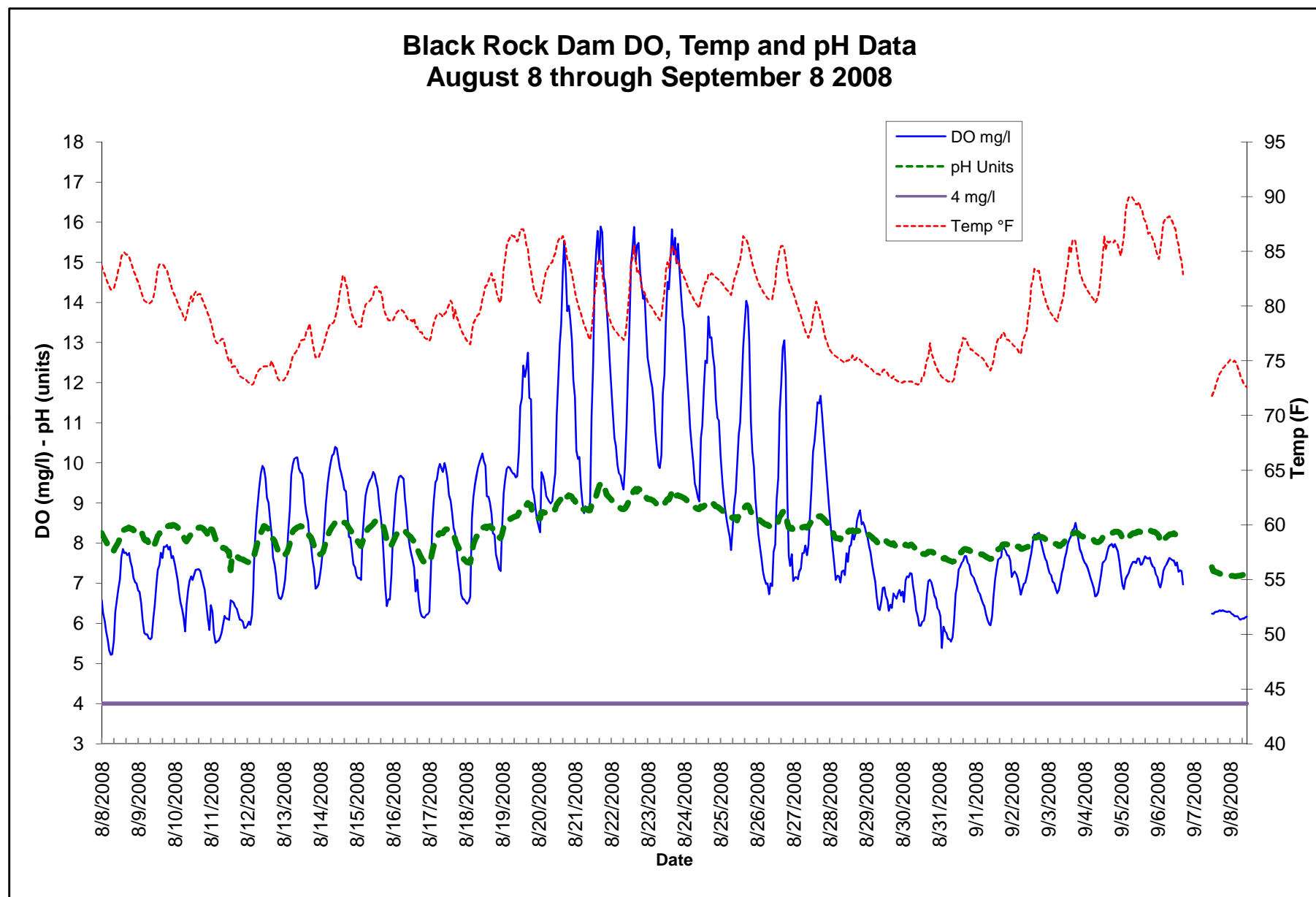


August 25th through September 2nd equipment failure.



Provisional data provided by the USGS when available

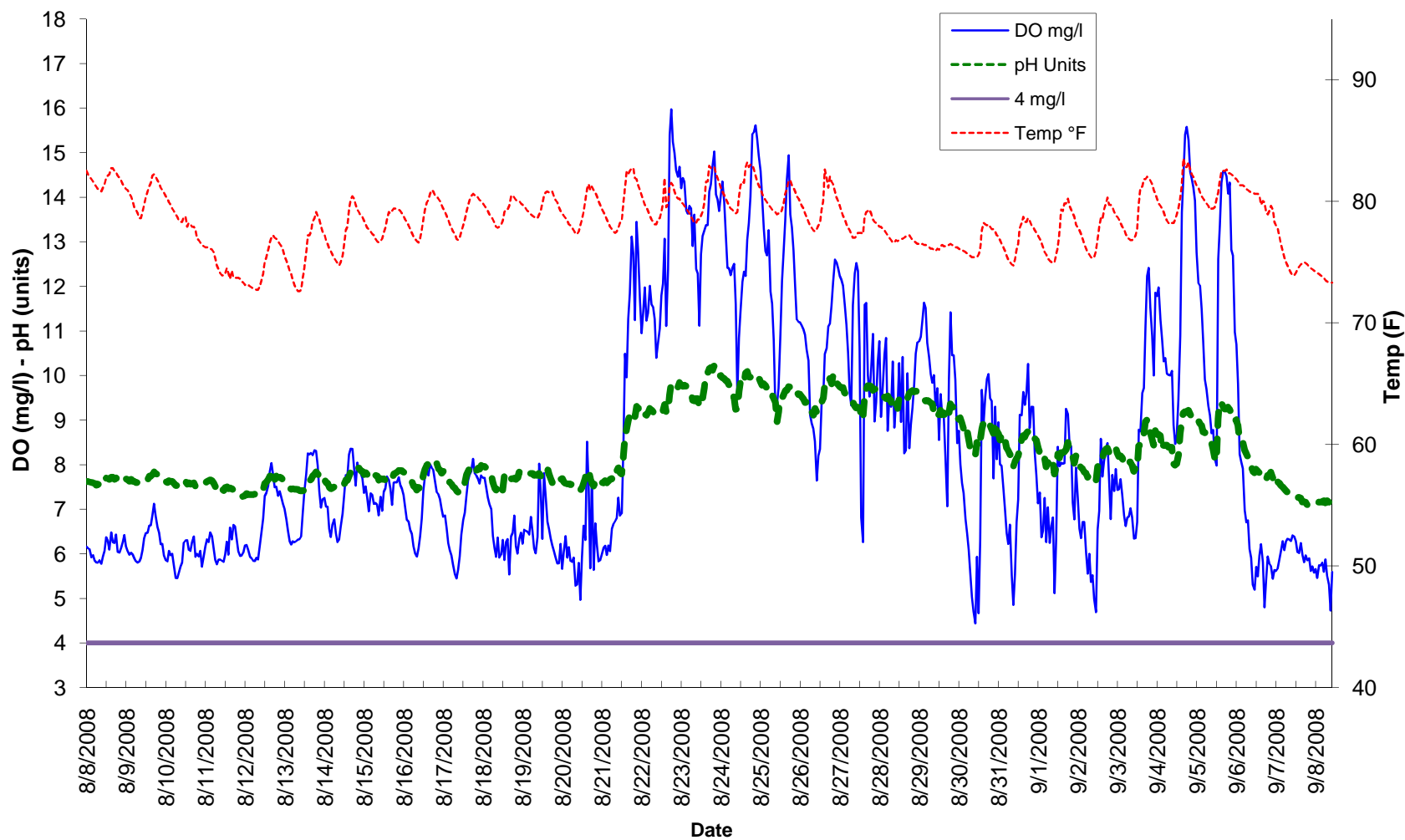
Data temporarily unavailable from USGS August 8th through August 11th and August 17th through August 22nd and Sept 4th through 8th



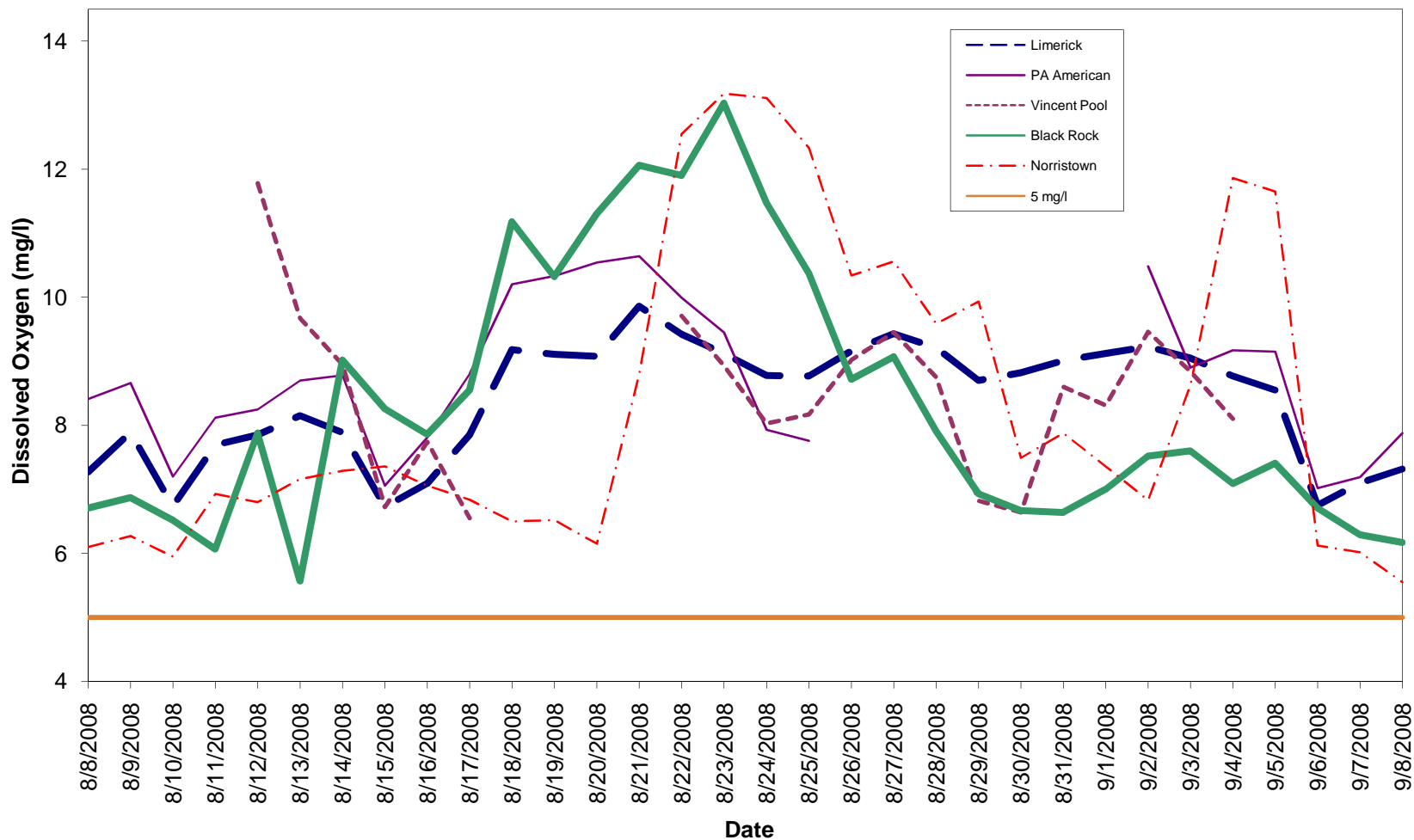
Equipment malfunction - no DO values from 0600 7/10/08 to 1200 7/17/08

Equipment removed Sept 6th at 1800 to Sept 7th at 1100 as precaution due to the heavy rains.

Norristown Pool DO, Temp and pH Data August 8 through September 8 2008

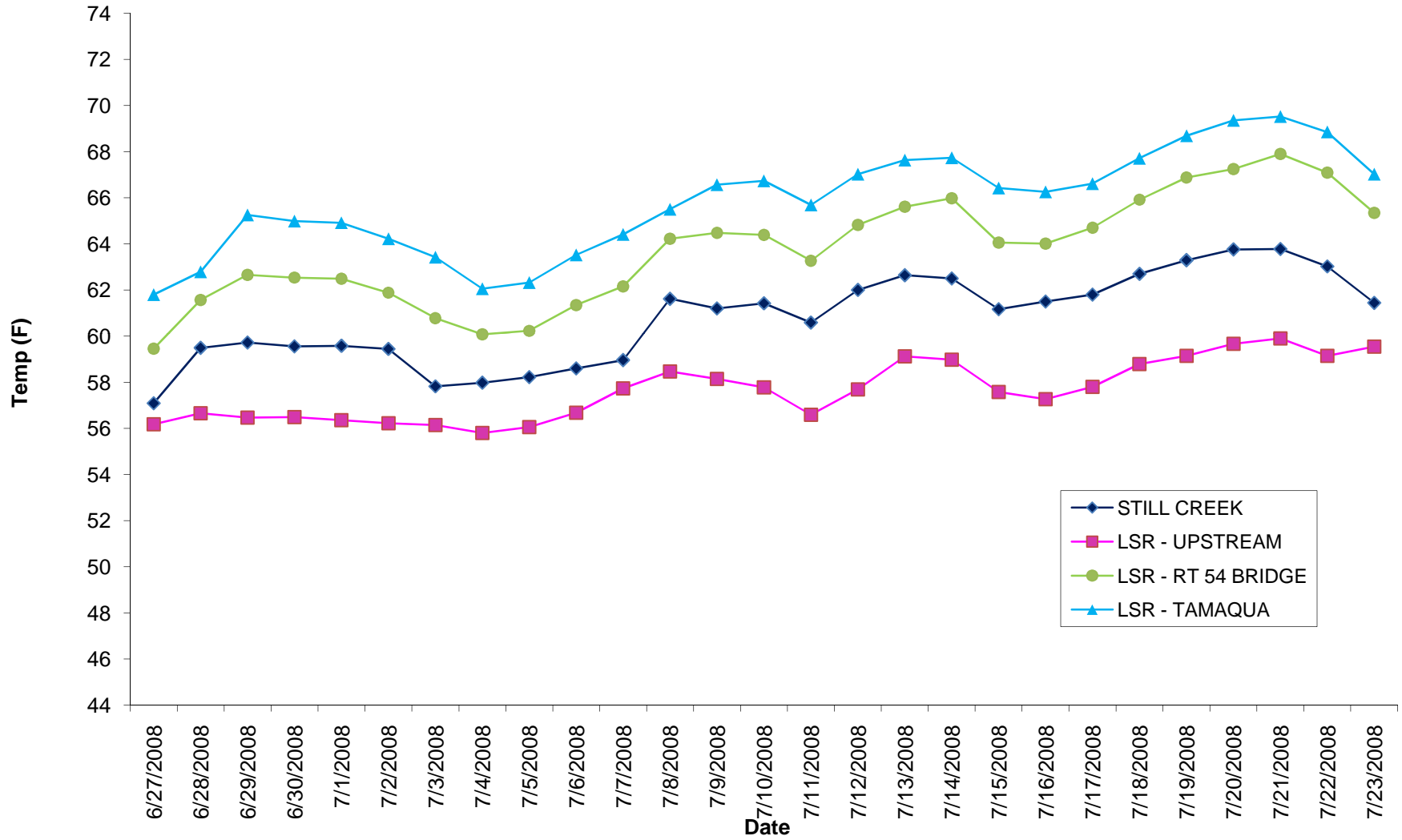


Mean Daily Schuylkill River Dissolved Oxygen August 8 through September 8 2008



Vincent Dam data provided by USGS when available.
 Vincent Dam data temporarily unavailable Aug 8th through Aug 12th and Aug 17th through Aug 22nd.
 Equipment removed at Black Rock Sept 6th at 1800 to Sept 7th at 1100 as precaution due to the heavy

Still Creek & Little Schuylkill River Daily Average Temperatures July 2008



Schuylkill River & E. Norwegian Creek Daily Average Temperatures July 2008

