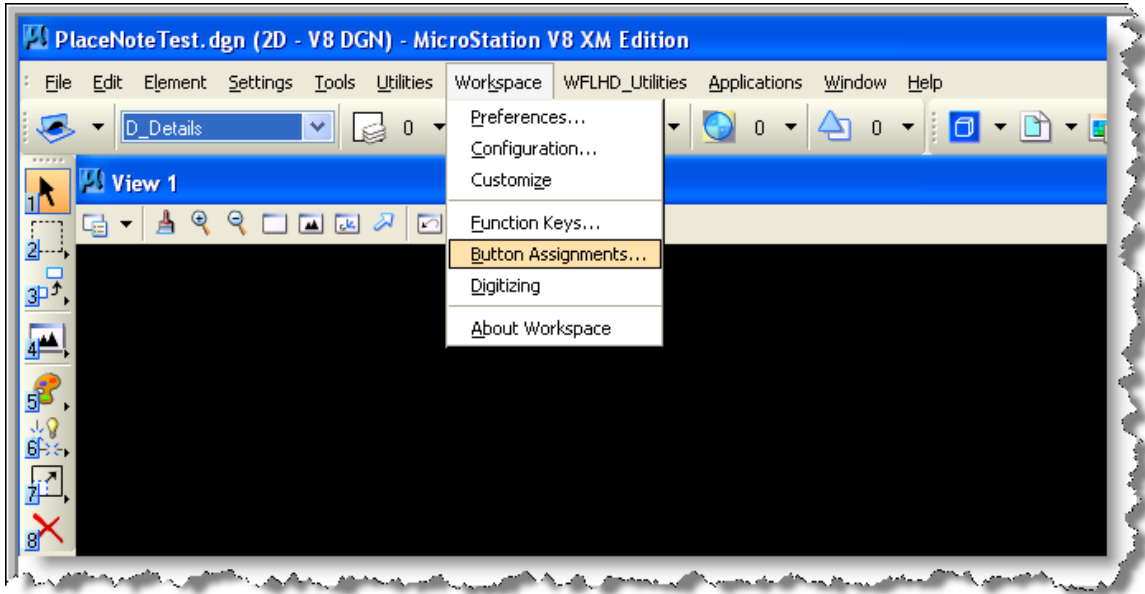


How to enable the Pan Scrolling in MicroStation XM

Open MicroStation XM and from the pull down menus select Workspace. Then select Button Assignments.



This will bring up the Button Assignments dialog box. Once in the dialog box:

- Place a check mark in "Shift" box
- Set the drop down box to "Data"
- In the "Action" field type pan scroll
- Select the OK button.

