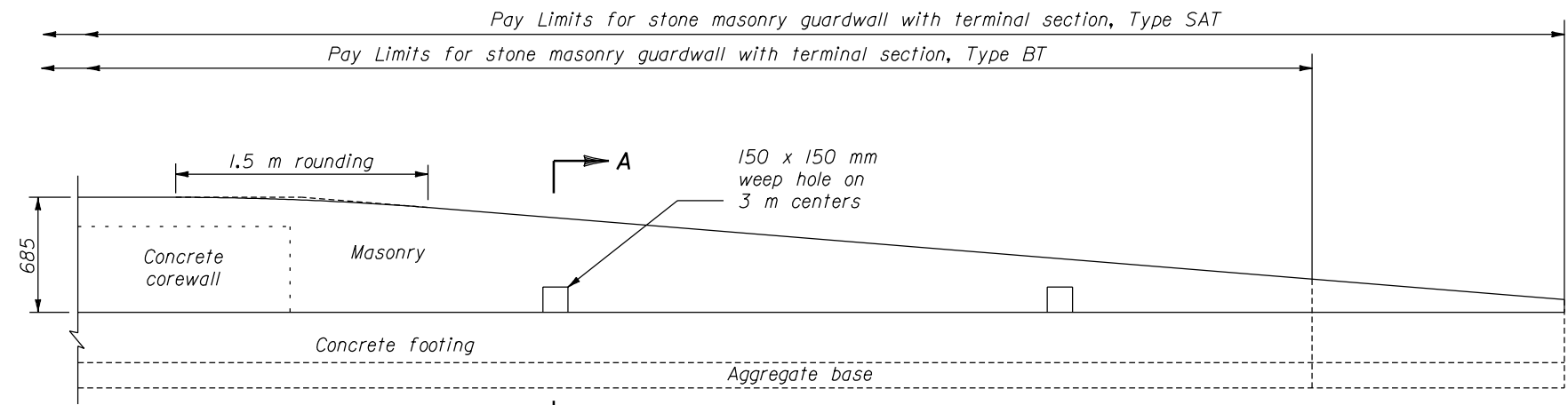
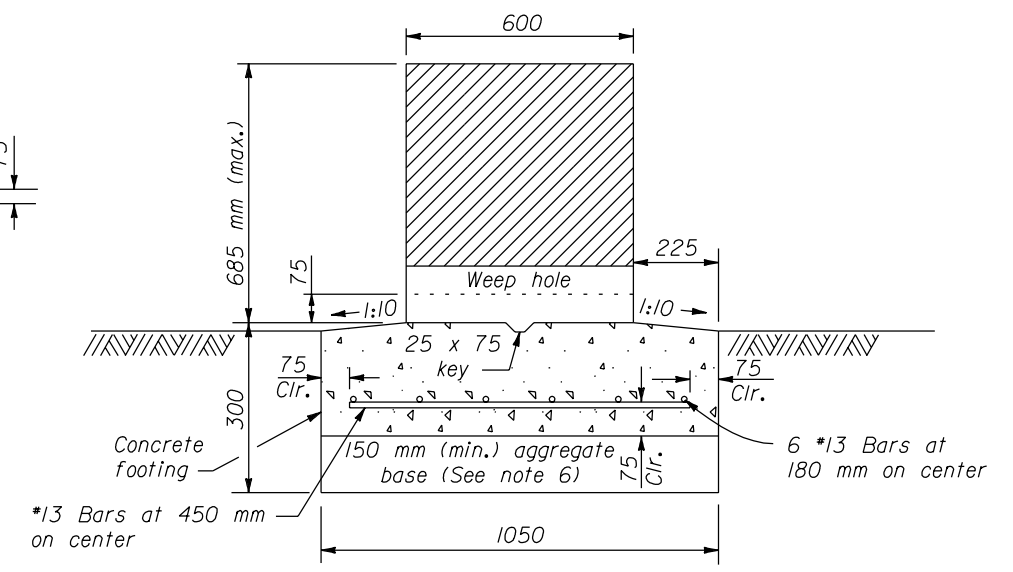


PLAN

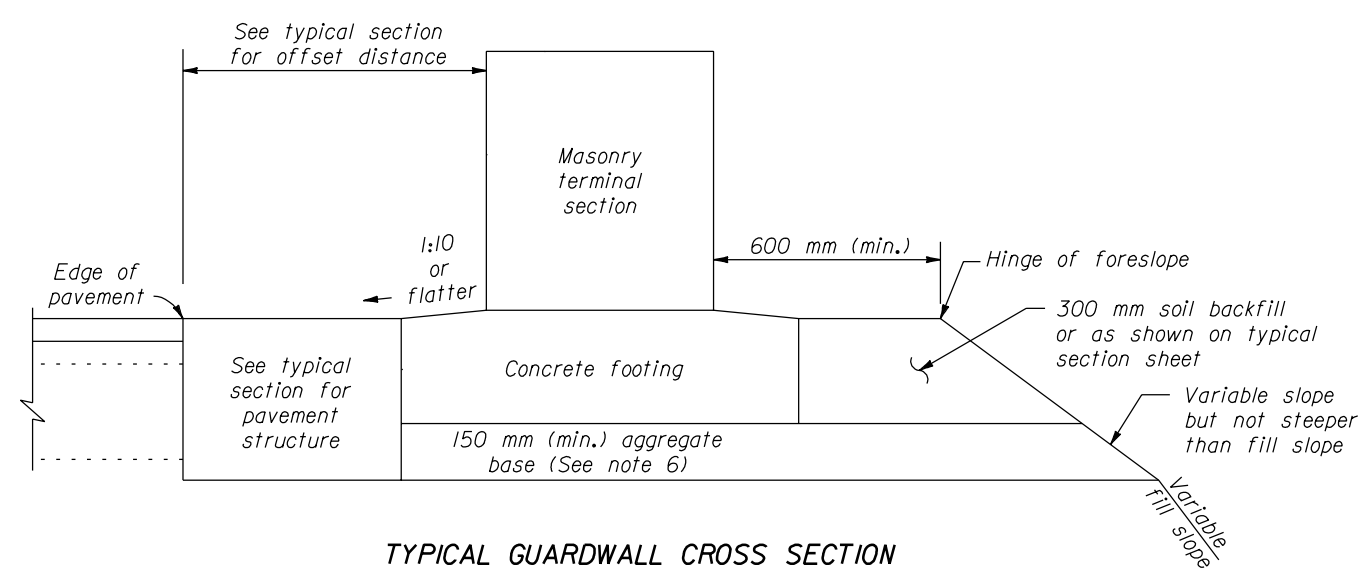
- NOTE:**
- Dimensions not labeled are in millimeters.
  - The Type SAT (Stand alone terminal) terminal section or the Type BT (Buried terminal) terminal section to be used as specified.
  - For the Type BT terminal section the last 1.5 m of the Type SAT terminal section is deleted. See Standard M204-1, Earth berm for roadside barrier terminal section, for construction of the earth berm.
  - Extend the fill widening a minimum of 1.5 m behind the guardwall for the Type SAT terminal section, unless otherwise directed.
  - The guardwall flare shown in the plan view is the minimum length and rate required. As directed by the CO, the guardwall should be flared as far as practical from the road at the maximum rate indicated in the Guardwall Flare Rates table.
  - The depth of base may be less than 150 mm as directed by the CO, when the foundation is on either rock fill or solid rock.



ELEVATION



SECTION A-A



TYPICAL GUARDWALL CROSS SECTION

Design Speed (Km/h)	Shy line offset (meters)	Flare rate inside shy line (a:b)	Flare rate outside shy line (a:b)
100	2.5	26:1	13:1
80	2.0	21:1	11:1
60	1.5	17:1	9:1
50 or less	1.0	13:1	7:1

U.S. DEPARTMENT OF TRANSPORTATION  
FEDERAL HIGHWAY ADMINISTRATION  
FEDERAL LANDS HIGHWAY

**METRIC STANDARD**

**STONE MASONRY GUARDWALL  
TERMINAL SECTIONS  
TYPE SAT AND TYPE BT**

STANDARD APPROVED FOR USE 3/1996  
REVISED: 6/1997

STANDARD  
**M620-2**

NO SCALE

20 NOV 2000 f:\standrow\metric\m620-2.dgn