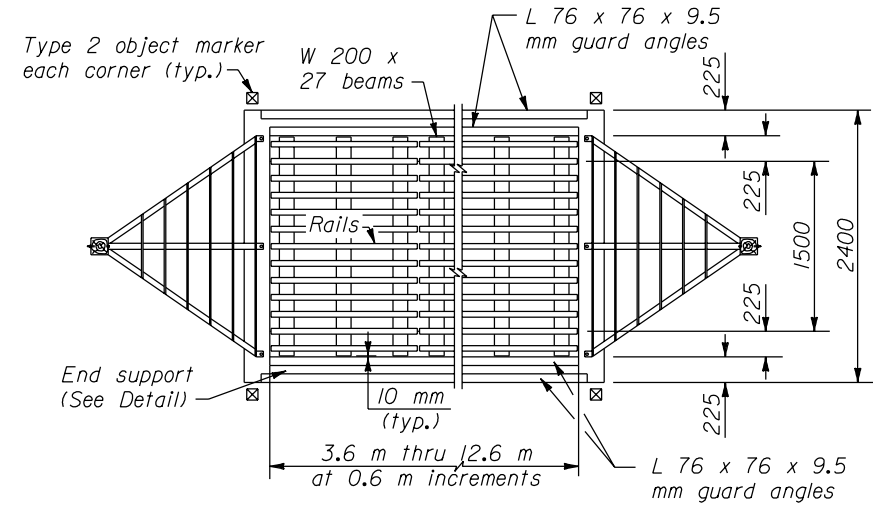
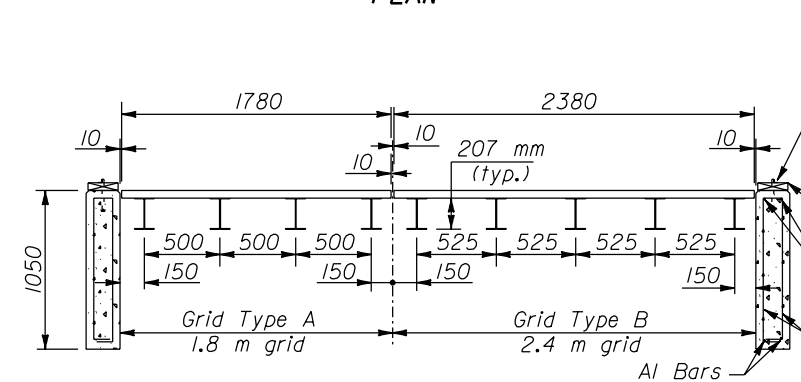


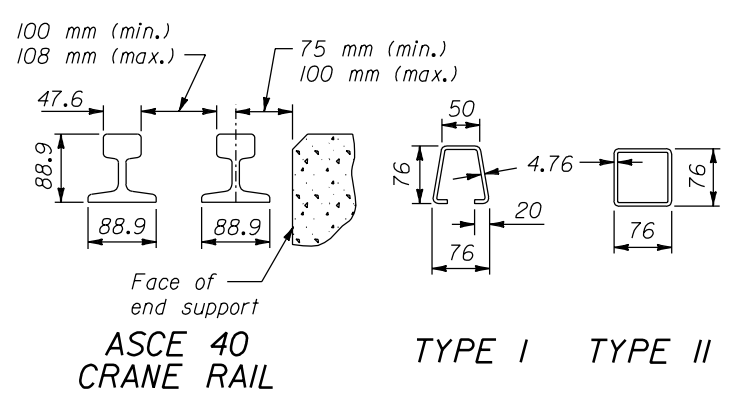
SECTION VIEW



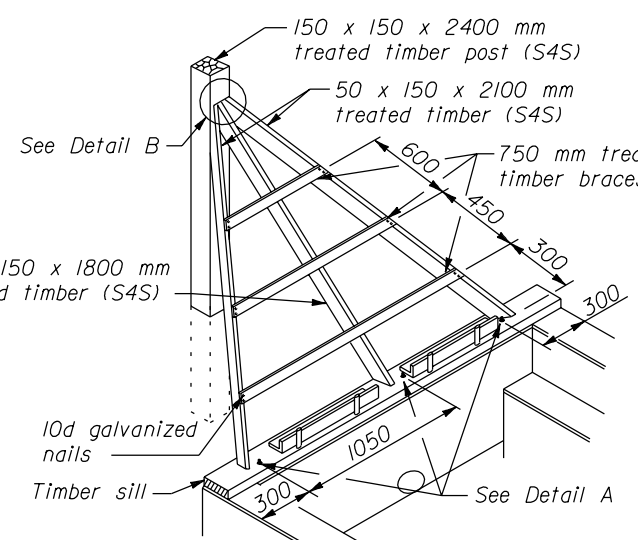
PLAN



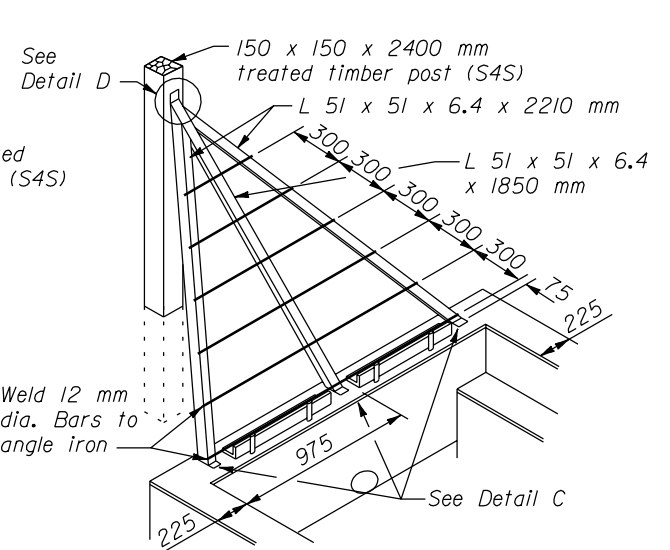
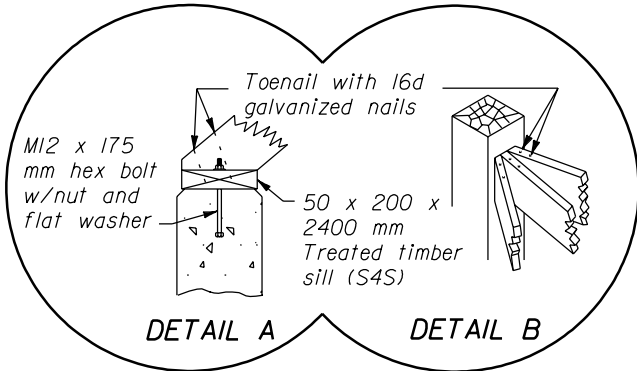
STANDARD GRID UNIT TYPES



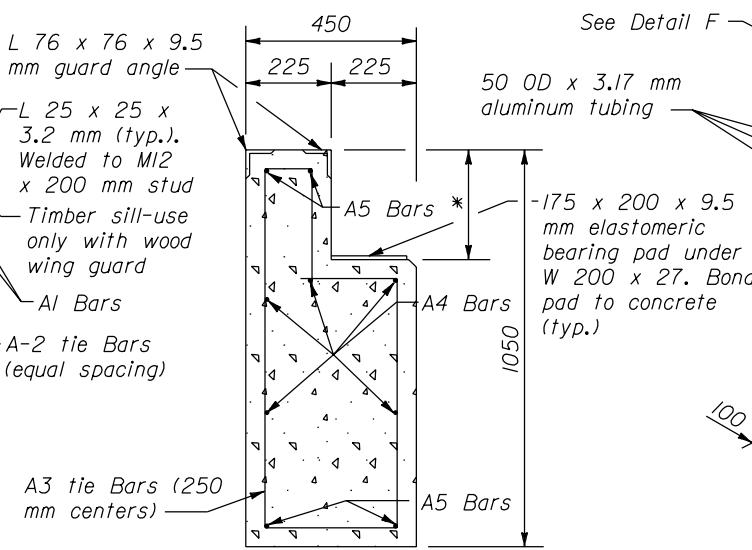
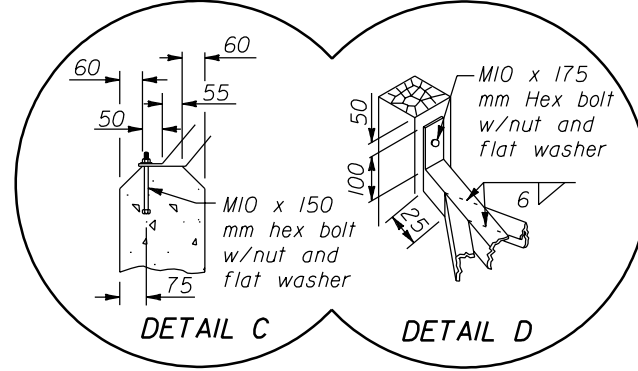
ACCEPTABLE ALTERNATE RAIL



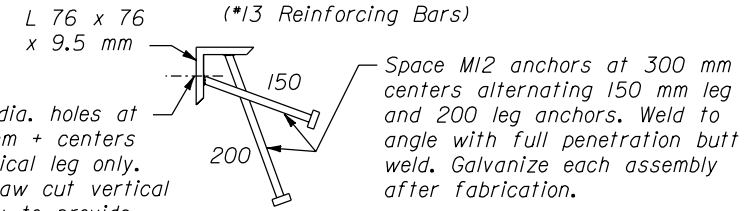
WOOD WING GUARD



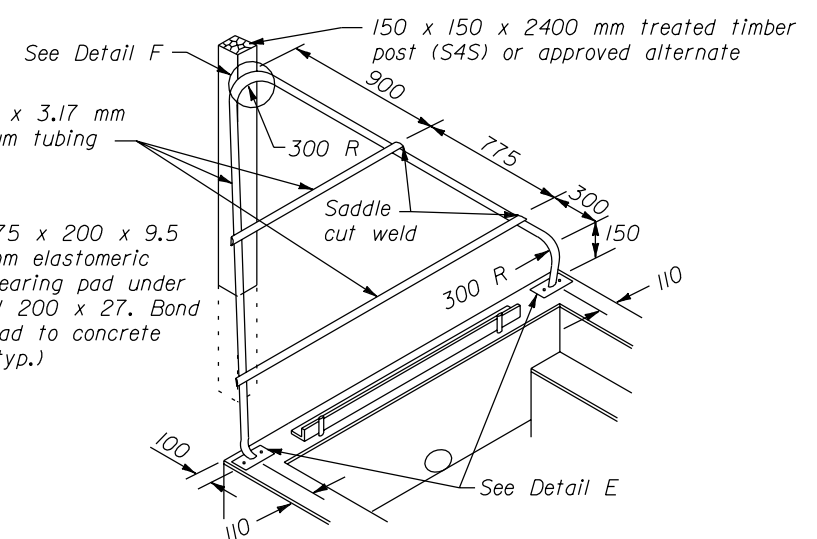
ANGLE IRON WING GUARD



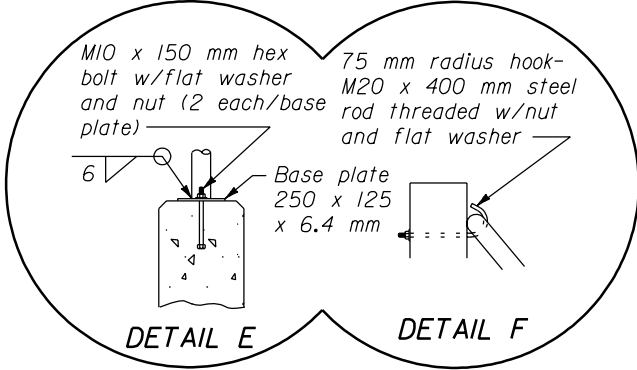
END SUPPORT DETAIL



GUARD ANGLE DETAIL



ALUMINUM TUBING WING GUARD NO SCALE



NOTE:

- Dimensions not labeled are in millimeters.
- LOADING: AASHTO MS18.
- CONCRETE: Chamfer exposed edges 20 mm unless otherwise shown. Give all concrete surfaces a Class 1 finish.
- STRUCTURAL STEEL: Rails conform to the requirements for ASCE 40 crane rail. Structural steel for alternate sections conforms to ASTM A 500, Grade B, Copper Steel or ASTM A 618, Grade 2. If the steel does not contain a minimum of 0.2 percent copper, galvanize the alternate sections. All other structural steel conforms to AASHTO M 183 and is painted.
- The minimum concrete cover to the face of any bar is 50 mm unless otherwise shown. All bars are #13.
- All welds are continuous 6 mm fillet shop welds. Weld rail or alternate sections on both sides to the W 200 x 27 beams at each intersection. All welding conforms to Section 555.
- Use aluminum alloy 6061-T6 or 6063-T6 for aluminum tubing.
- All timber conforms to AASHTO M 168, and is treated with chromated copper arsenate according to AASHTO M 133.
- Galvanize all hardware according to AASHTO M 111.
- Construct the cattle guard to conform with the finished roadway grade and template.
- Place one object marker at each corner of the cattle guard as shown. Mount object markers on 100 x 100 x 1950 mm posts with the reflector located 1050 mm above the elevation of the lateral support concrete.
- Install drain pipe as shown where required. Drain pipe is included in cattle guard unless otherwise shown.
- Unless otherwise shown in the special contract requirements, shop apply paint system 2 according to Section 555 and color the top coat according to Federal Standard 595B, Gray, 36231. Repair any damage to the paint system during installation.
- Install channels and wood blocking on cattle guards wider than 4.8 m to maintain grate spacing as shown on Standard M619-2.
- See Standard M619-3 for optional precast foundation details.

U.S. DEPARTMENT OF TRANSPORTATION FEDERAL HIGHWAY ADMINISTRATION FEDERAL LANDS HIGHWAY	
METRIC STANDARD	
CATTLE GUARD	
STANDARD APPROVED FOR USE 3/1996	STANDARD
REVISED: 6/1997	M619-1

20 NOV 2000 f:\standrow\metric\mst61901.dgn