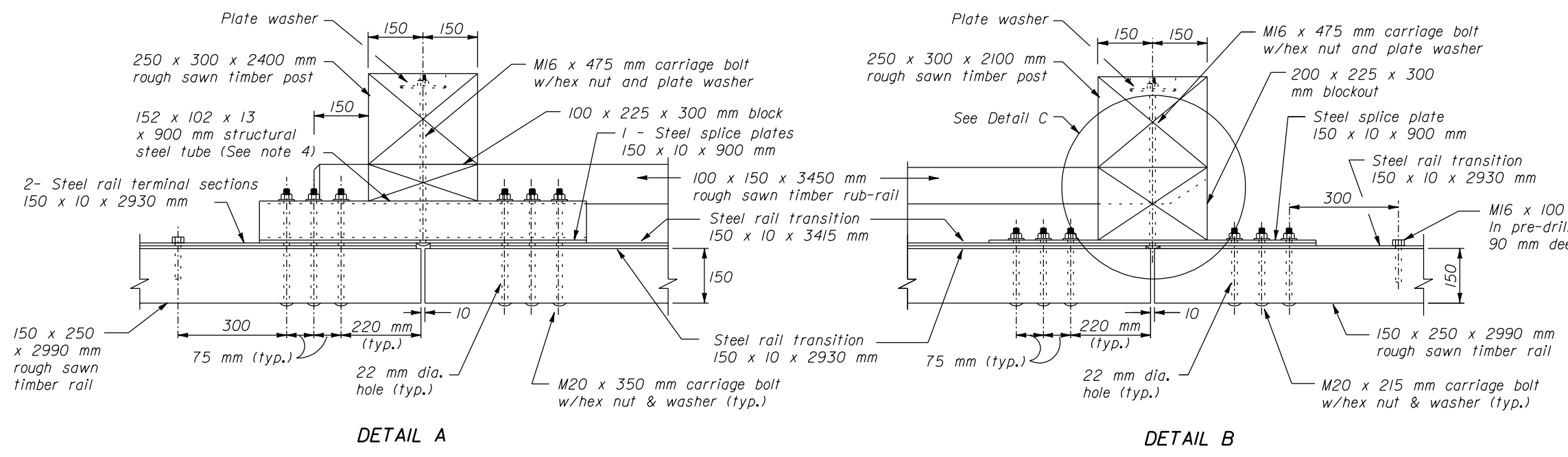
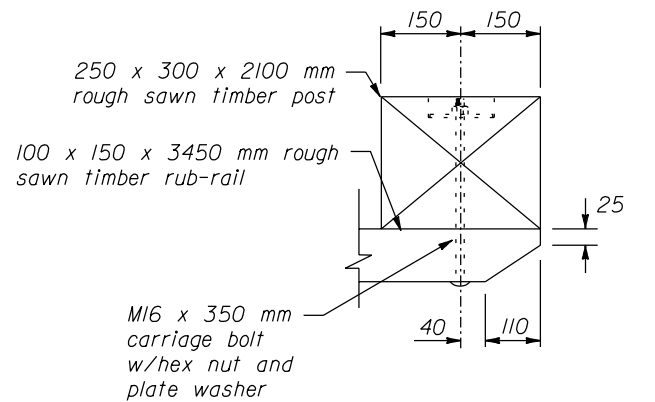


- NOTE:**
- Dimensions not labeled are in millimeters.
 - See Standard M617-66 for Sections A-A through C-C, steel rail layouts, and other details.
 - Use weathering steel for all structural steel and fastener hardware.
 - Drill the bolt pattern for structural steel tube to match the pattern for the splice plate shown on Standard M617-66.
 - For posts 2 and 3, use a 200 x 225 x 300 mm block for the blackout, and an M16 x 650 mm carriage bolt with hex nut and plate washer.
 - Furnish hardware in the metric sizes shown. Equivalent imperial sizes may be used when metric sizes are not available.



POST CONNECTION

NO SCALE

U.S. DEPARTMENT OF TRANSPORTATION
FEDERAL HIGHWAY ADMINISTRATION
FEDERAL LANDS HIGHWAY

METRIC STANDARD

**STEEL-BACKED
TIMBER GUARDRAIL
CONNECTION TO STRUCTURE**

STANDARD APPROVED FOR USE 3/1996

REVISIONS:

STANDARD
M617-65

22 NOV 2000 f:\standrow\metric\m61765.dgn