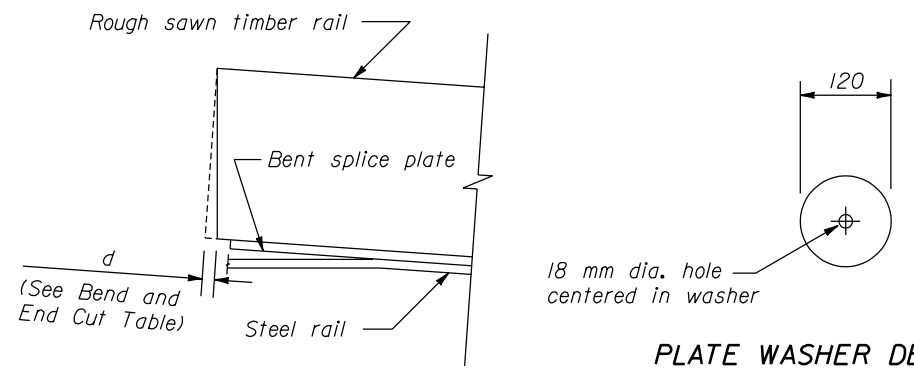


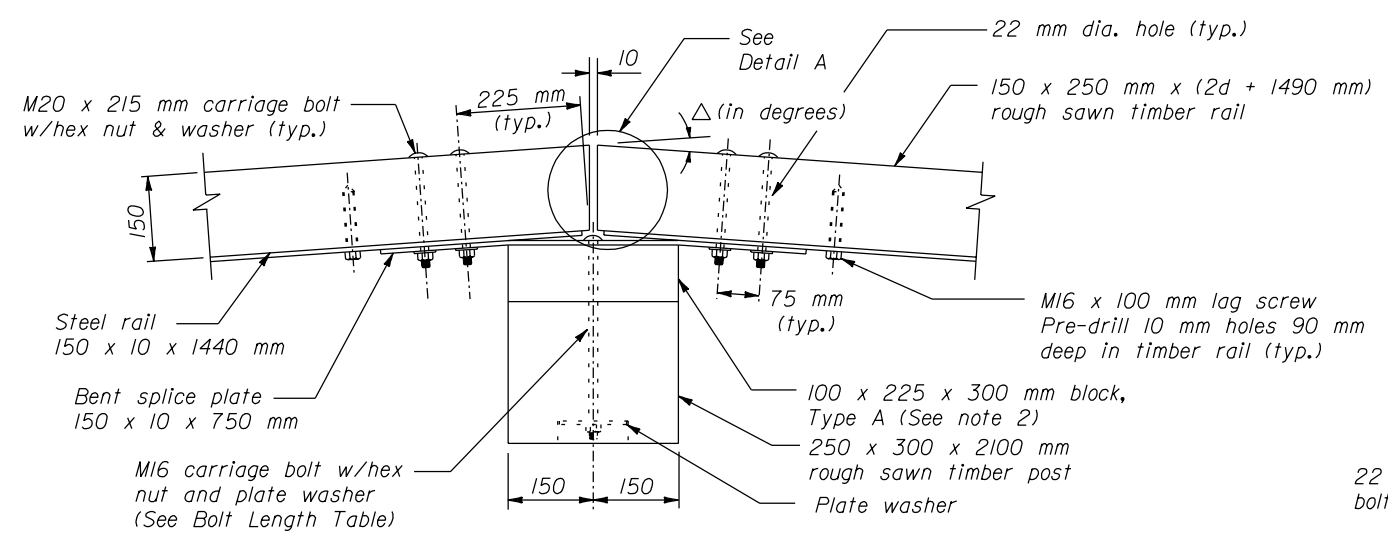
**STEEL RAIL**  
150 x 10 x 1445 mm



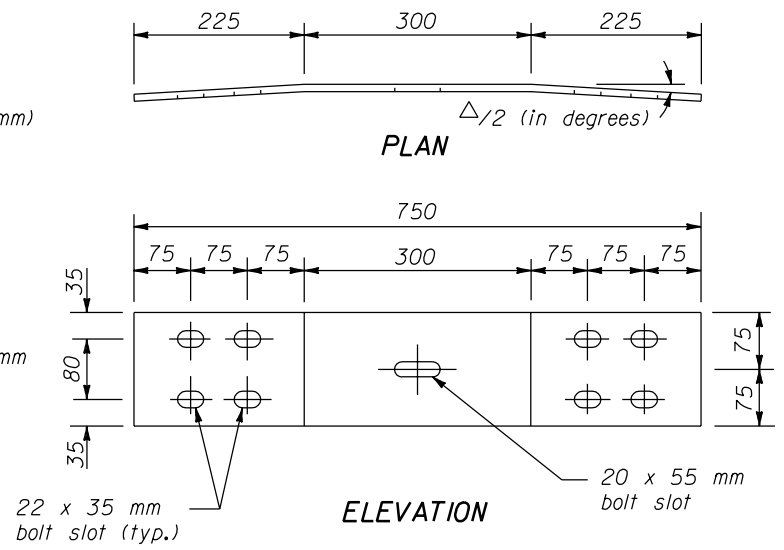
**DETAIL A**

**PLATE WASHER DETAIL**  
120 mm DIA. X 6 mm

- NOTE:**
1. Dimensions not labeled are in millimeters.
  2. Use the Type A, blocked-out, system or the Type B, non-blocked-out, system as specified.
  3. Use weathering steel for all structural steel and fastener hardware.
  4. Furnish shop bent splice plates. Use the minimum bend angle shown in the table below.
  5. Furnish hardware in the metric sizes shown. Equivalent imperial sizes may be used when metric sizes are not available.
  6. See Standard M617-64 for Plan View Layout.



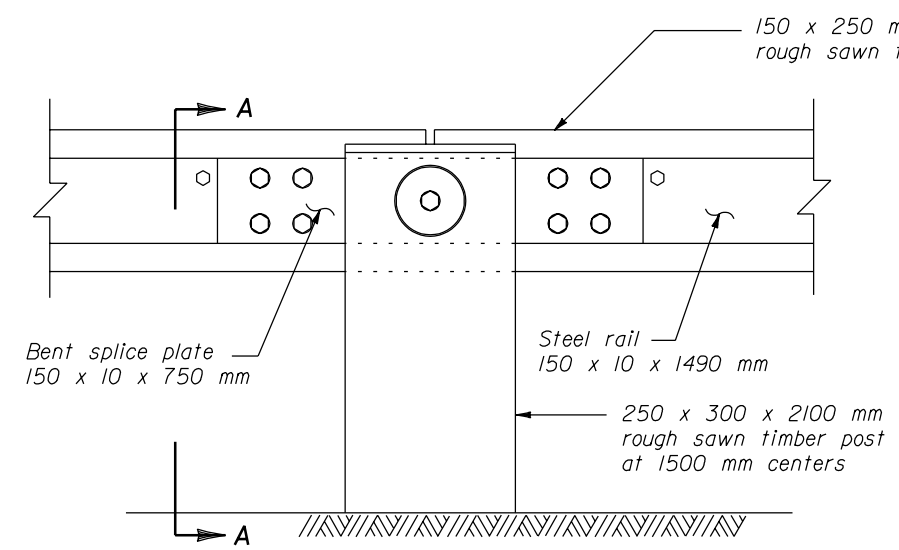
**PLAN**



**ELEVATION**

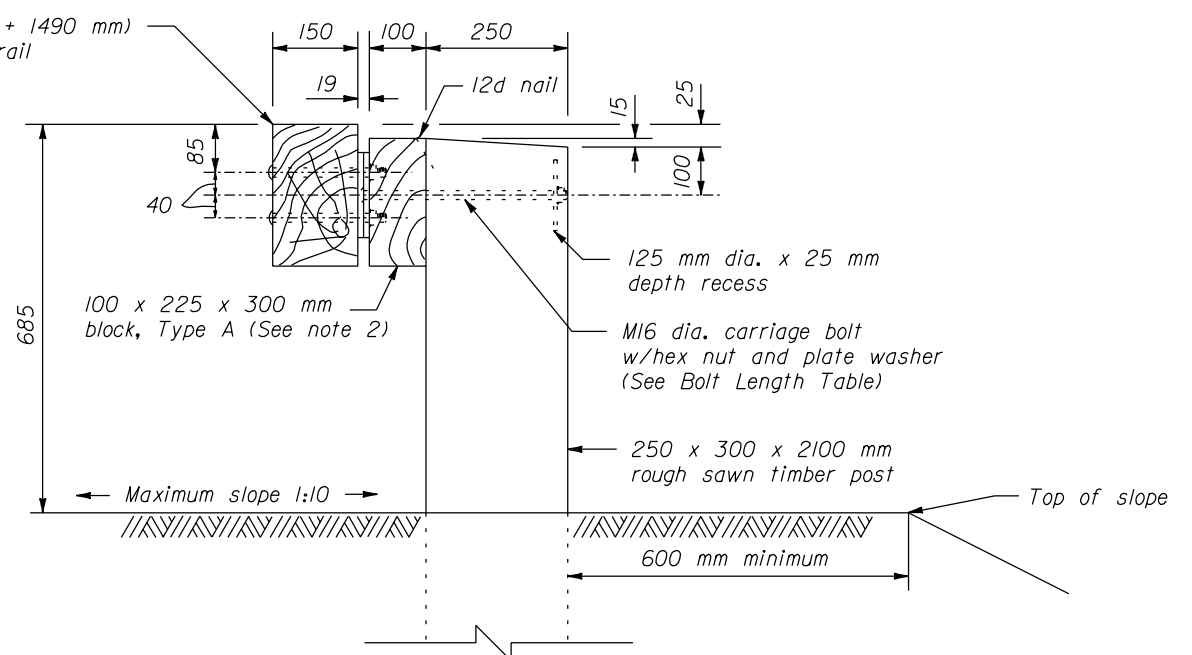
**BENT SPLICE PLATE**  
150 X 10 X 750 mm

BEND AND END CUT TABLE		
Radius R meters	Δ/2 (degrees)	d mm
5	8.63	23
8	5.38	14
10	4.3	11
12	3.58	9
14	3.07	8
16	2.69	7
18	2.39	6
20	2.15	5
22	1.95	5
over 22	flat	0



**ELEVATION**

**POST CONNECTION**



**SECTION A-A**

BOLT LENGTHS TABLE	
Type A (Block-out)	Type B (No Block-out)
375	275

U.S. DEPARTMENT OF TRANSPORTATION  
FEDERAL HIGHWAY ADMINISTRATION  
FEDERAL LANDS HIGHWAY

**METRIC STANDARD**

**STEEL-BACKED TIMBER GUARDRAIL  
AROUND CIRCULAR CURVES  
22 m RADIUS AND BELOW**

STANDARD APPROVED FOR USE 3/1996  
REVISED:

STANDARD  
**M617-63**

NO SCALE