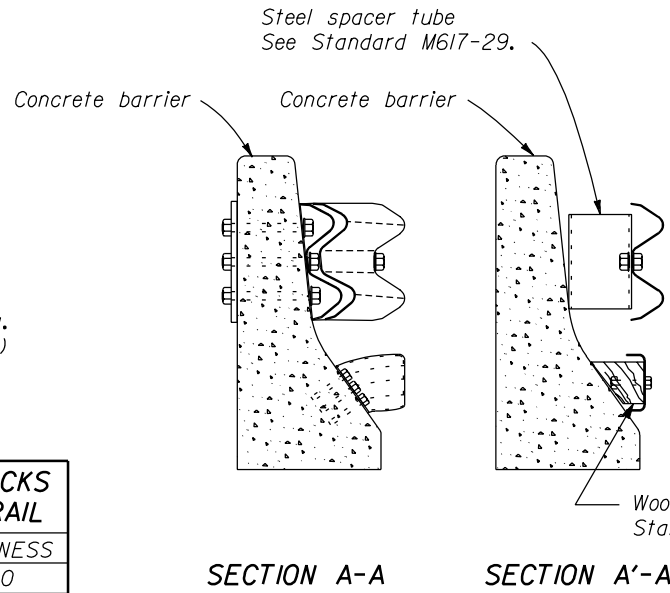
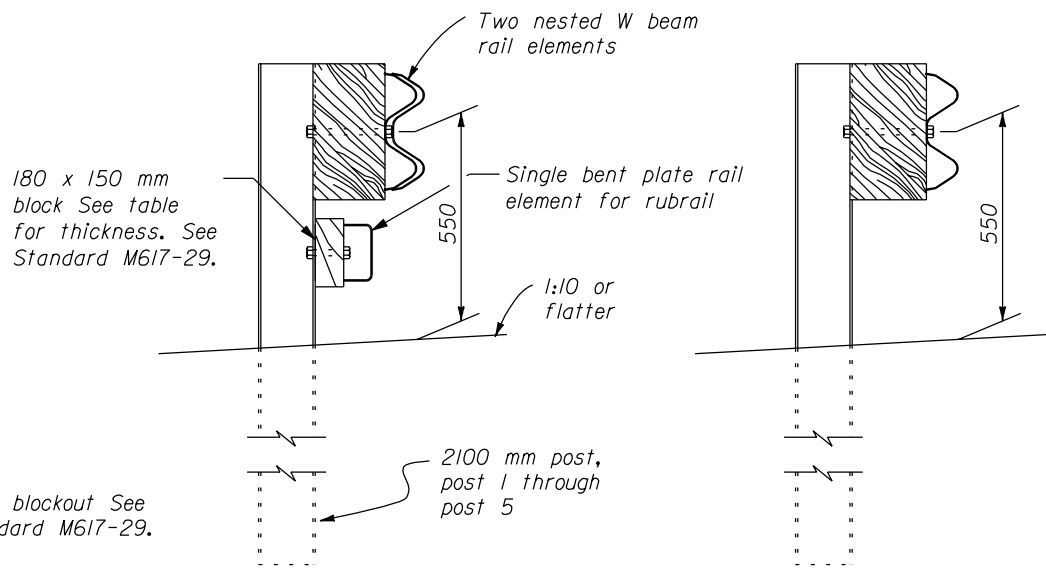


BEARING PLATE

WOOD BLOCKS FOR RUBRAIL	
POST	THICKNESS
①	170
②	130
③	90
④	50

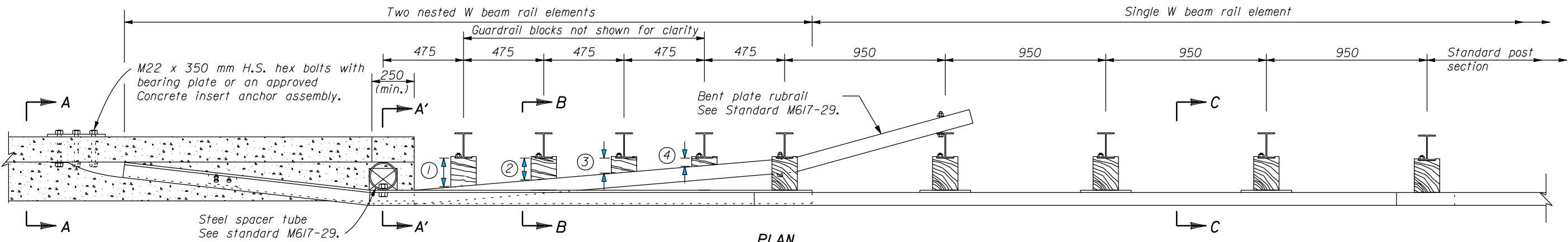


SECTION A-A SECTION A'-A'

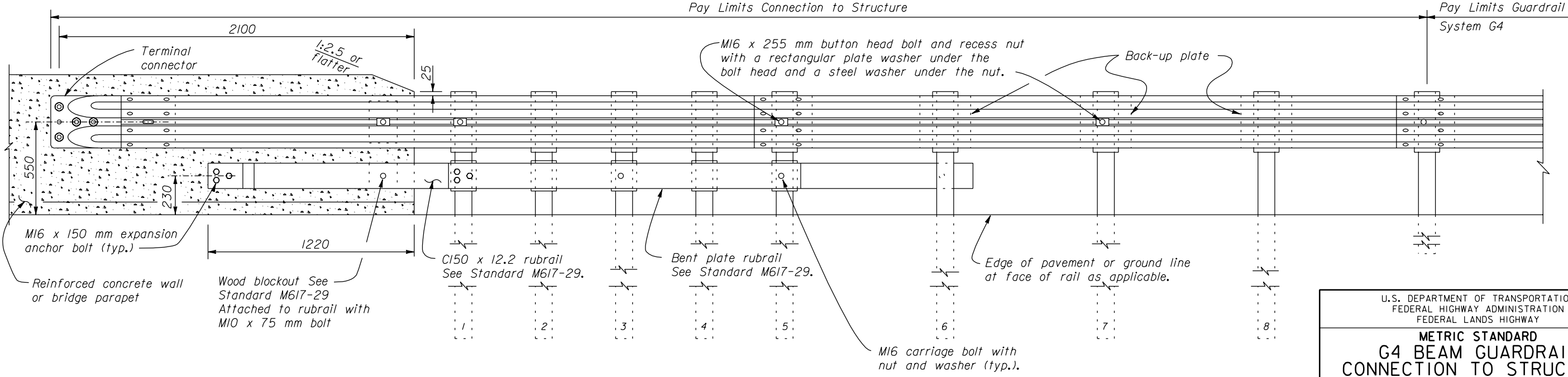


SECTION B-B SECTION C-C

- NOTE:**
- Dimensions not labeled are in millimeters.
 - Offset drill an additional hole on posts 1 through 6 to attach wood blocks for rubrail and/or the rubrail.
 - Offset drill wood blocks for rubrail to sit squarely on the post flange on posts 1 through 4. Secure blocks to posts 2 and 4. Secure rubrail and blocks to post flange on posts 1,3, and 5 use M16 carriage bolts.
 - Do not bolt W beam to posts and blocks at posts 2 through 4.
 - Reinforced concrete wall or bridge parapet must be capable of developing a 265 kN pull out strength.
 - Furnish hardware in the metric sizes shown. Equivalent imperial sizes may be used when metric sizes are not available.



PLAN



ELEVATION

NO SCALE

U.S. DEPARTMENT OF TRANSPORTATION
 FEDERAL HIGHWAY ADMINISTRATION
 FEDERAL LANDS HIGHWAY

**METRIC STANDARD
 G4 BEAM GUARDRAIL
 CONNECTION TO STRUCTURE
 SAFETY SHAPE FACE
 STEEL POSTS**

STANDARD APPROVED FOR USE 3/1996
 REVISED: 1/1998

STANDARD
M617-28

22 NOV 2000 f:\standrow\metric\m61728.dgn