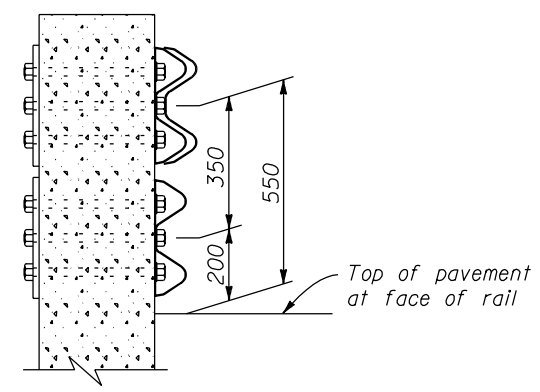
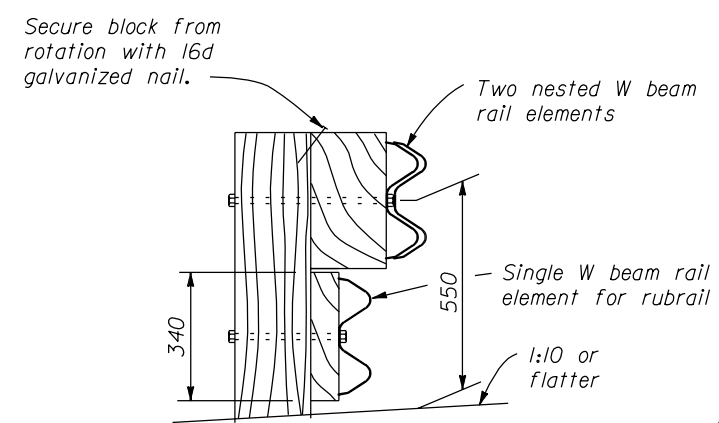


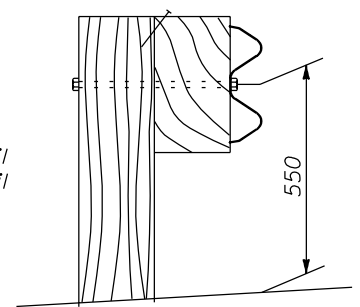
BEARING PLATE



SECTION A-A

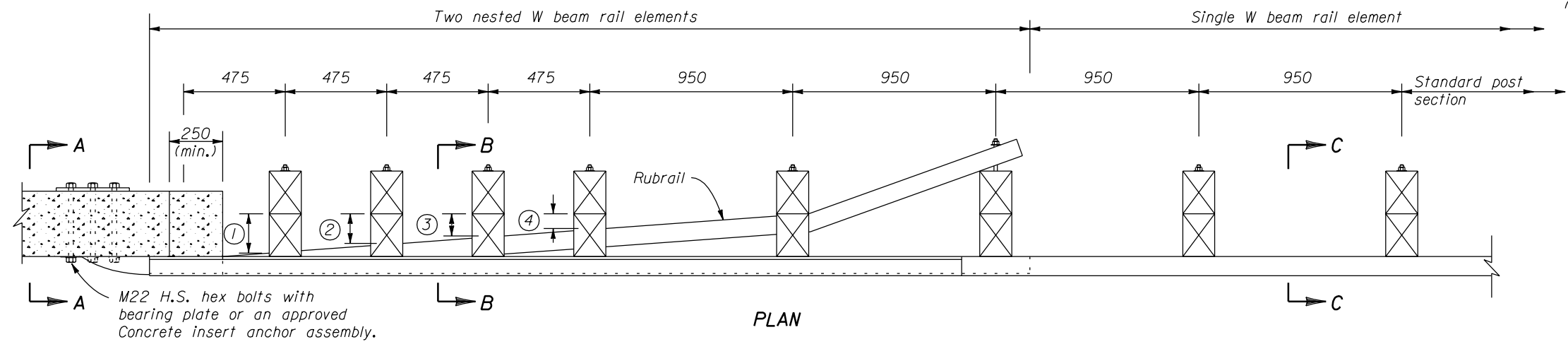


SECTION B-B



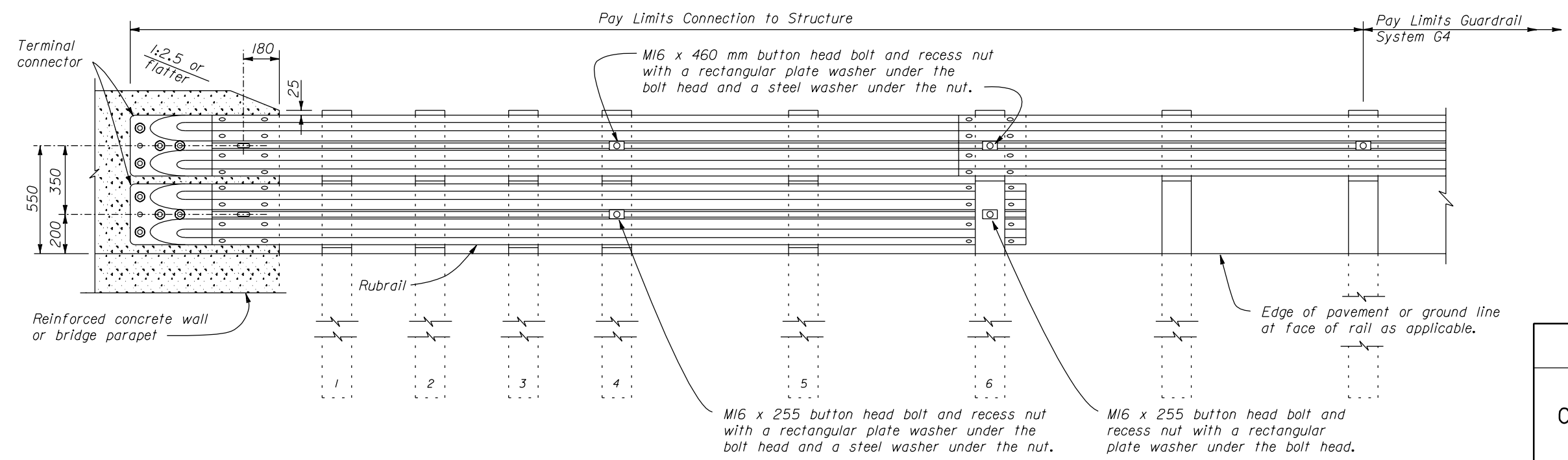
SECTION C-C

- NOTE:**
- Dimensions not labeled are in millimeters
 - The rubrail may be shop bent in the last 950 mm to facilitate installation.
 - Center drill wood blocks for rubrail located on posts 1 through 4. Secure blocks to post 1 through 3 with M16 carriage bolts.
 - Posts 1, 2, 3, 4 and 6 require an additional hole to attach wood blocks for rubrail and/or the rubrail.
 - Do not bolt nested W beam or rubrail W beam to posts and blocks on posts 1, 2, 3 and 5. Bolt blocks directly to posts.
 - Reinforced concrete wall or bridge parapet must be capable of developing a 265 kN pull out strength.
 - Furnish hardware in the metric sizes shown. Equivalent imperial sizes may be used when metric sizes are not available.



PLAN

WOOD BLOCKS FOR RUBRAIL	
POST	THICKNESS
①	125
②	100
③	75
④	50



ELEVATION

NO SCALE

U.S. DEPARTMENT OF TRANSPORTATION
 FEDERAL HIGHWAY ADMINISTRATION
 FEDERAL LANDS HIGHWAY

**METRIC STANDARD
 G4 BEAM GUARDRAIL
 CONNECTION TO STRUCTURE
 VERTICAL FACE
 WOOD POSTS**

STANDARD APPROVED FOR USE 3/1996

REVISOR: STANDARD
M617-25

22 NOV 2000 f:\standrow\metric\m61725.dgn