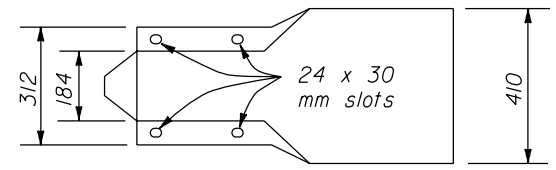
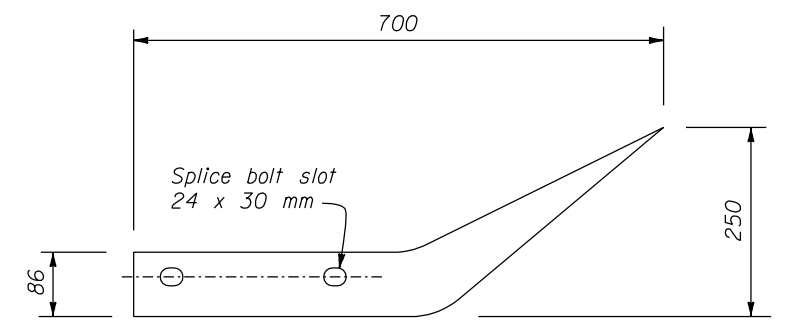


PLAN

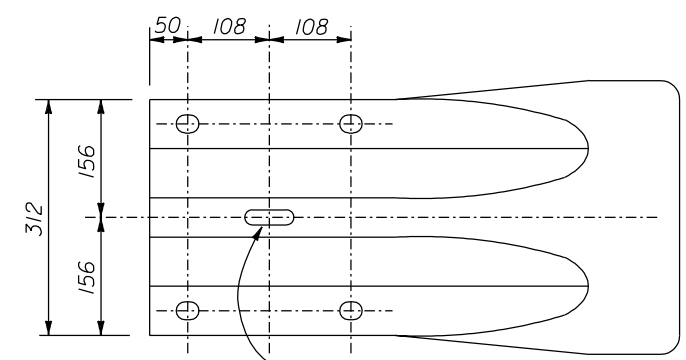


ELEVATION

ROUND END SECTION ASSEMBLY

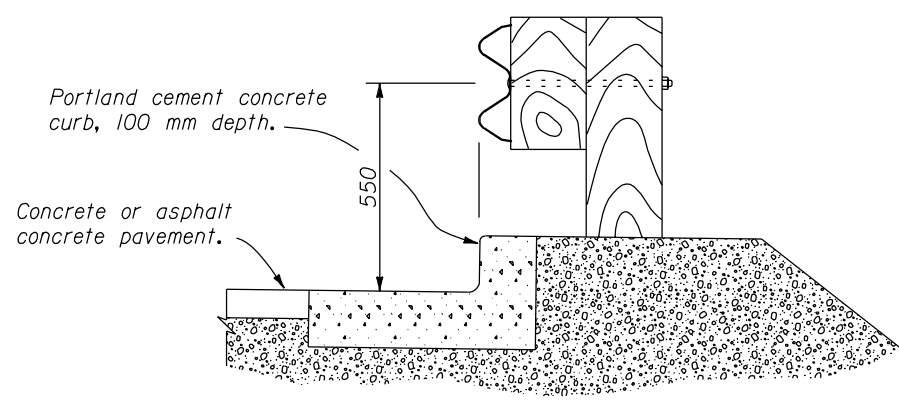


PLAN

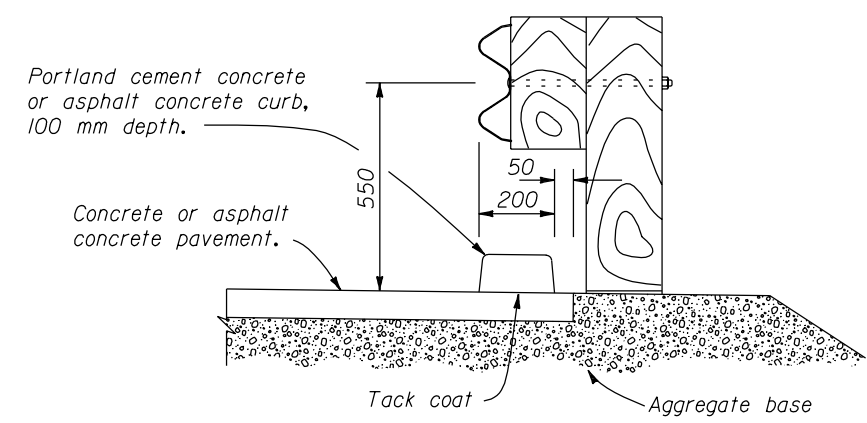


ELEVATION

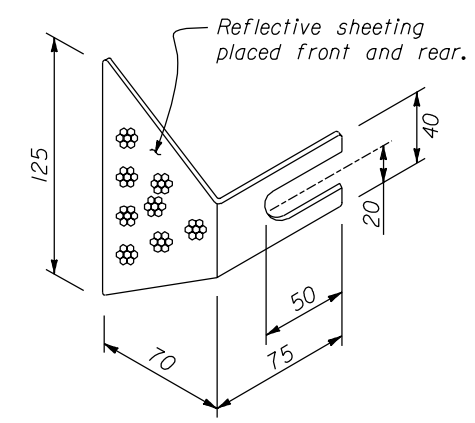
FLARED END SECTION



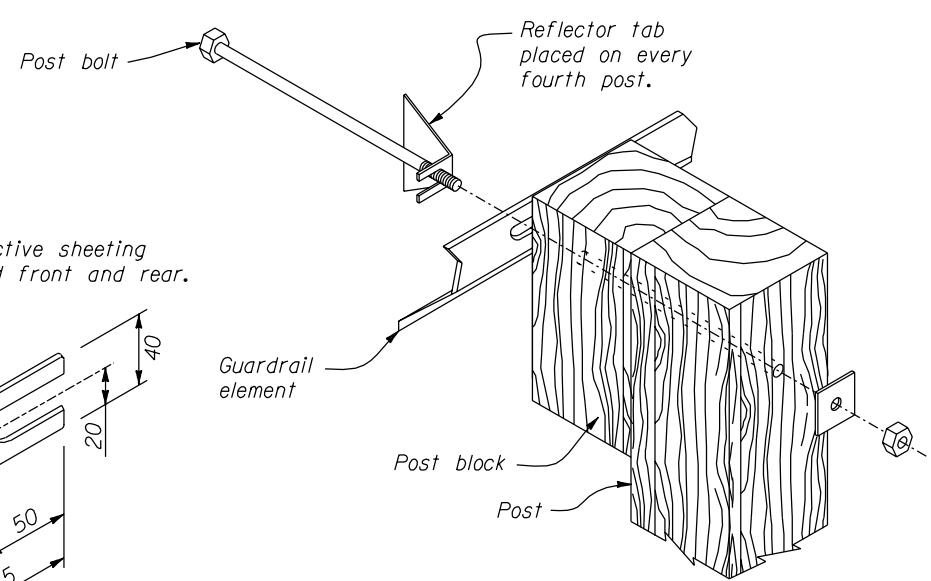
PLACEMENT OF GUARDRAIL AT CURB AND GUTTER LOCATIONS



PLACEMENT OF GUARDRAIL AT CURB LOCATIONS



REFLECTOR TAB



ASSEMBLY DETAIL

NOTE:

1. Dimensions not labeled are in millimeters.
2. Dimensional tolerances not shown or implied are intended to be those consistent with the proper functioning of the part, including its appearance, and accepted manufacturing practices.
3. Rounded or flared end sections are acceptable alternates to buffered end sections and type 1 end sections on terminal sections at the trailing ends of guardrail runs on the right side of multilane roadways and where shown on the plans on the left side of multilane roadways.
4. The curb, and curb and gutter shapes shown are for illustration only. Actual curb, and curb and gutter shapes and dimensions will show on the plans.
5. Alternate reflector tab shapes are acceptable.
6. Furnish hardware in the metric sizes shown. Equivalent imperial sizes may be used when metric sizes are not available.

U.S. DEPARTMENT OF TRANSPORTATION FEDERAL HIGHWAY ADMINISTRATION FEDERAL LANDS HIGHWAY	
METRIC STANDARD	
G4 W BEAM GUARDRAIL SUPPLEMENTARY INSTALLATION DETAILS	
STANDARD APPROVED FOR USE 3/1996	STANDARD
REVISED:	M617-23

NO SCALE

22 NOV 2000 f:\standrow\metric\m61723.dgn