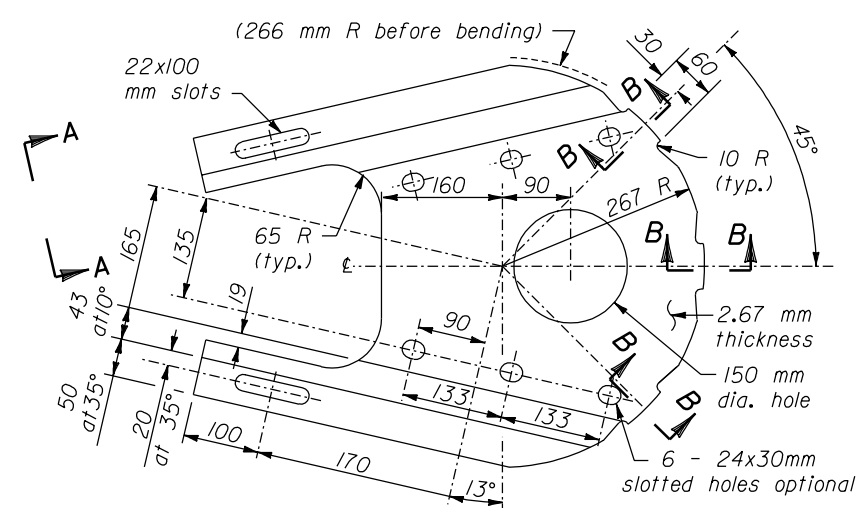
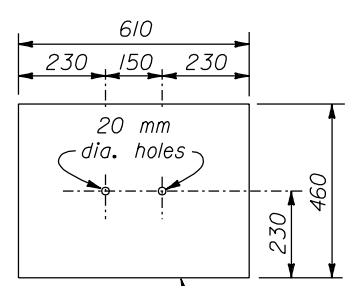


VIEW A-A SECTION B-B VIEW C-C
DIAPHRAGM PLATE DETAILS

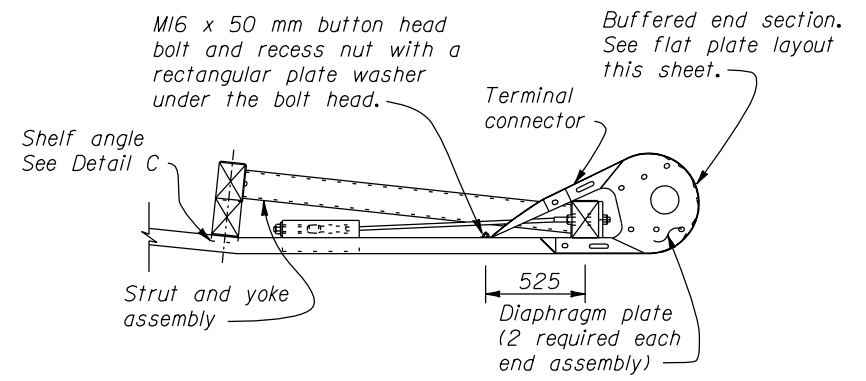
GALVANIZED STANDARD PIPE POST SLEEVE



DIAPHRAGM PLATE
(2 required each terminal)

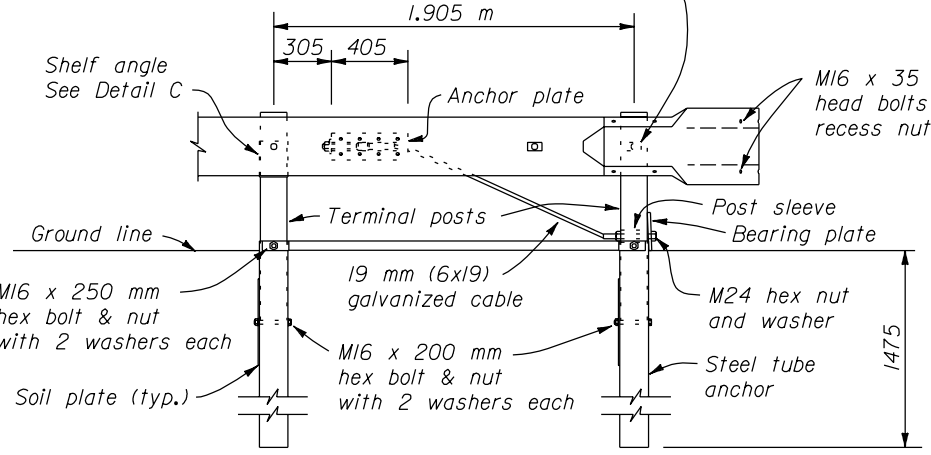


SOIL PLATE
(2 reqd.)

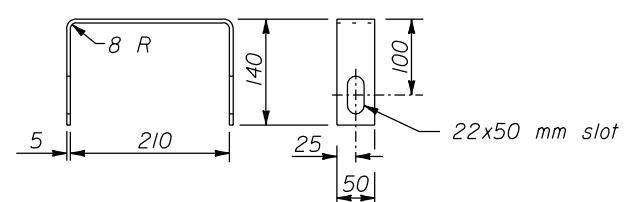


PLAN

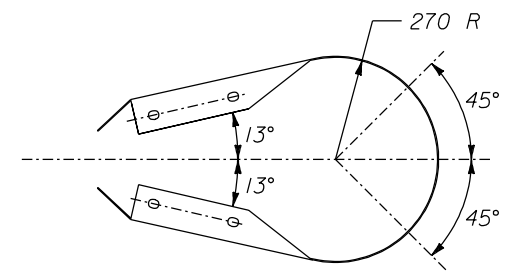
M16 x 255 mm button head bolt and recess nut with a rectangular plate washer under the bolt head and a steel washer under the nut.



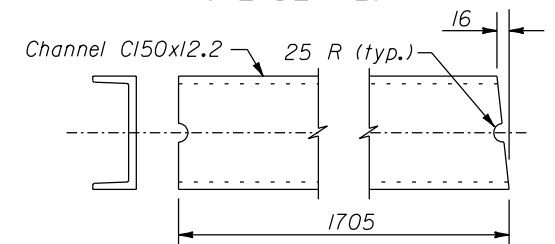
ELEVATION
ANCHORAGE ASSEMBLY



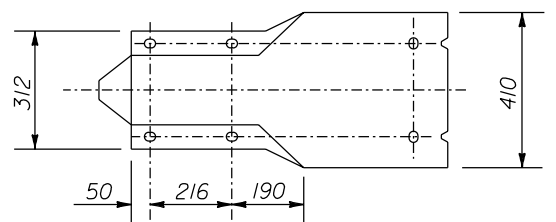
YOKE DETAILS



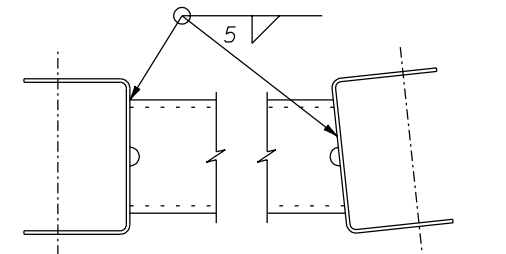
PLAN



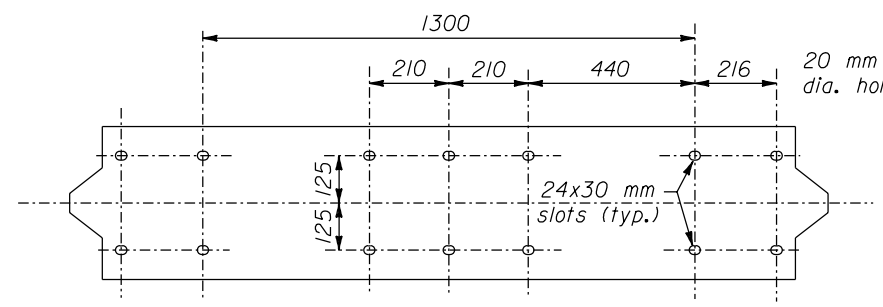
STRUT DETAILS



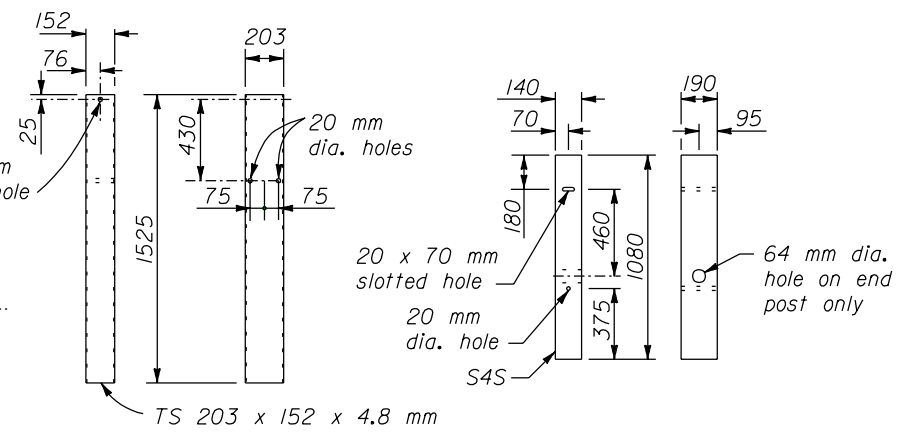
ELEVATION



Shown, legs down,
For opposite hand, install legs up.
STRUT AND YOKE ASSEMBLY



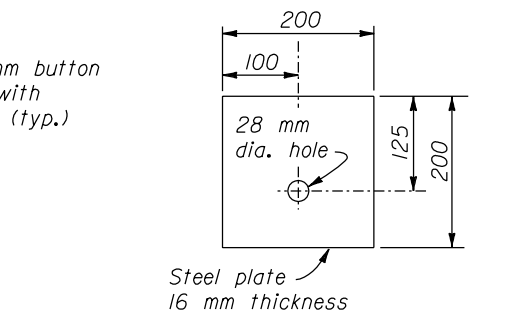
BUFFERED END SECTION
FLAT PLATE LAYOUT



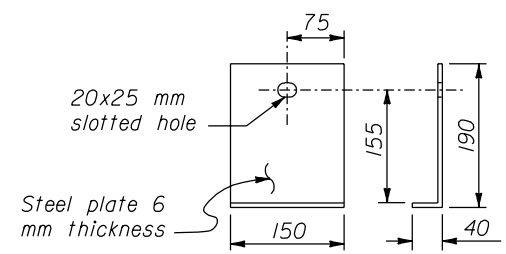
STEEL TUBE ANCHOR TERMINAL POST

NO SCALE

- NOTE:**
1. Dimension not labeled are in millimeters.
 2. Dimensional tolerances not shown or implied are intended to be those consistent with the proper functioning of the part, including its appearance, and accepted manufacturing practices.
 3. Furnish hardware in metric sizes shown. Equivalent imperial sizes may be used when metric sizes are not available.



BEARING PLATE



DETAIL C
SHELF ANGLE

U.S. DEPARTMENT OF TRANSPORTATION
FEDERAL HIGHWAY ADMINISTRATION
FEDERAL LANDS HIGHWAY

METRIC STANDARD
G4 W BEAM GUARDRAIL
MODIFIED ECCENTRIC
LOADER TERMINAL
MELT ANCHORAGE ASSEMBLY

STANDARD APPROVED FOR USE 3/1996
REVISED: 8/1997

STANDARD
M617-12

22 NOV 2000
f:\standrow\metric\m61712.dgn