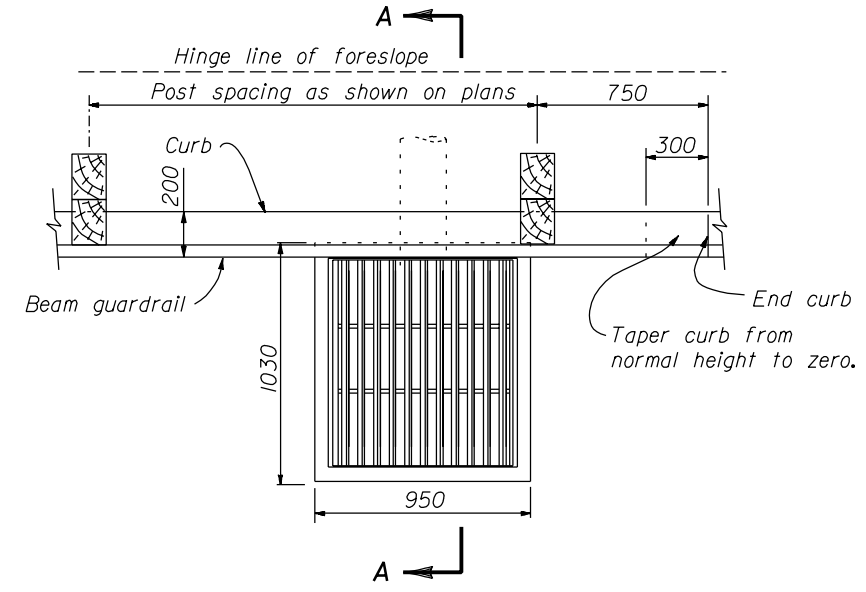


PLAN

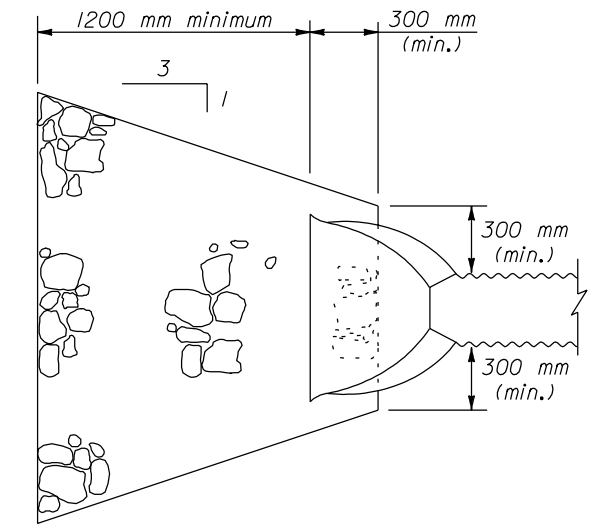
CATCH BASIN LAYOUT AT BRIDGE ENDS

DESCRIPTION	FRAME AND GRATE	
	TYPE A	TYPE B
Reinforcing Steel	32 kg	32 kg
Structural Steel	98 kg	108 kg
Concrete	0.6 m ³	0.6 m ³

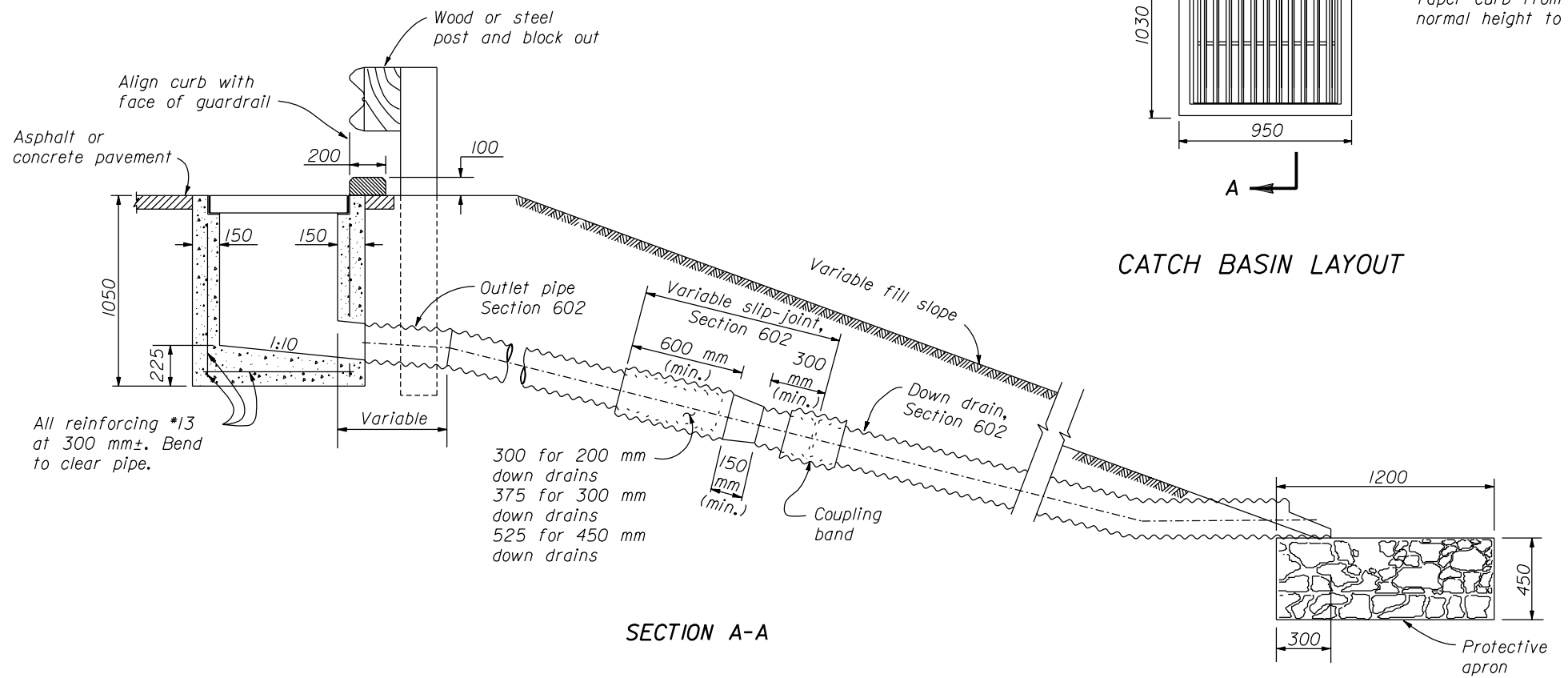


CATCH BASIN LAYOUT

- NOTE:**
- Dimensions not labeled are in millimeters.
 - CONCRETE: Chamfer exposed edges 20 mm unless otherwise shown. Give all concrete surfaces a Class 1 finish.
 - The minimum concrete cover to the face of any bar is 50 mm unless otherwise shown.
 - See Standard M604-2 for Type A Frame and Grate and Standard M604-3 for Type B Frame and Grate.
 - Make all coupling band connections watertight by placing 5 mm bead of approved caulking under each half of the bands before tightening.
 - Fabricate tapered portion of slip-joint from either flat or corrugated sheets.
 - Place Class 2 riprap conforming to Section 251 for protective apron.



PLAN
PROTECTIVE APRON



SECTION A-A

NO SCALE

U.S. DEPARTMENT OF TRANSPORTATION
FEDERAL HIGHWAY ADMINISTRATION
FEDERAL LANDS HIGHWAY

METRIC STANDARD

**CATCH BASIN TYPE 2
WITH DOWN DRAIN**

STANDARD APPROVED FOR USE 3/1996
REVISED: 8/1997

STANDARD
M604-4

17 NOV 2000
f:\standrow\metric\mst60404.dgn