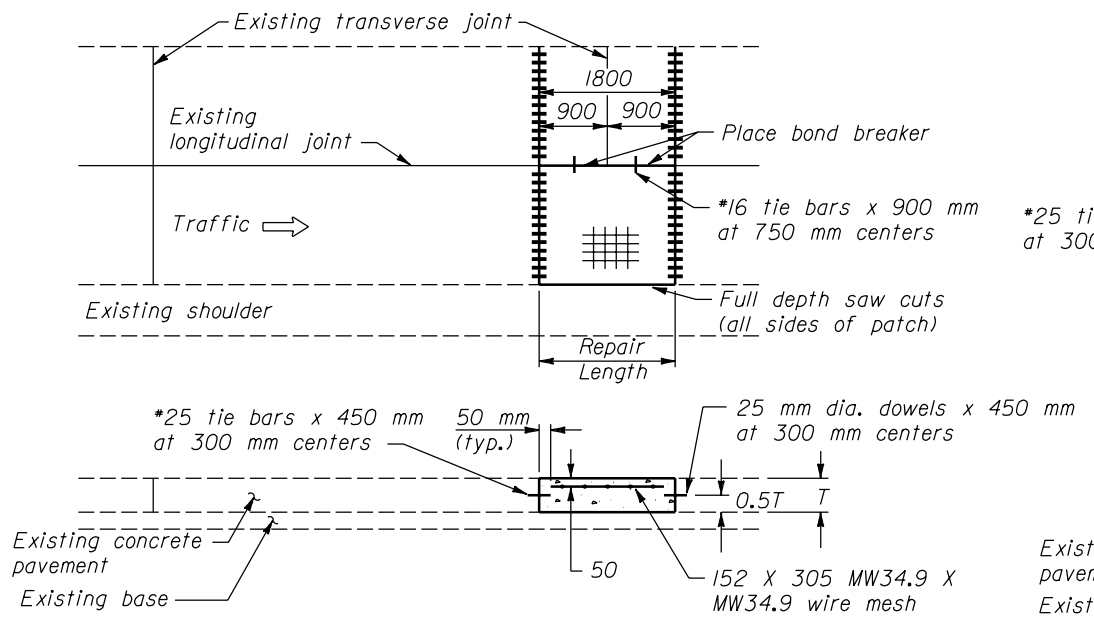
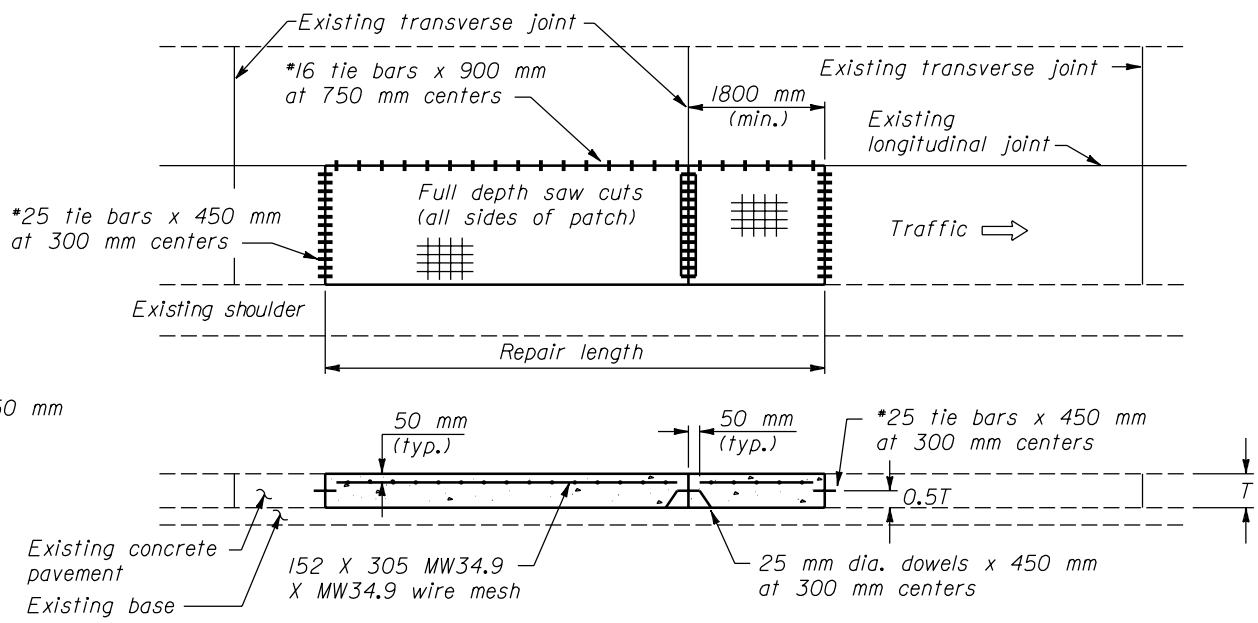


**NOTE:**

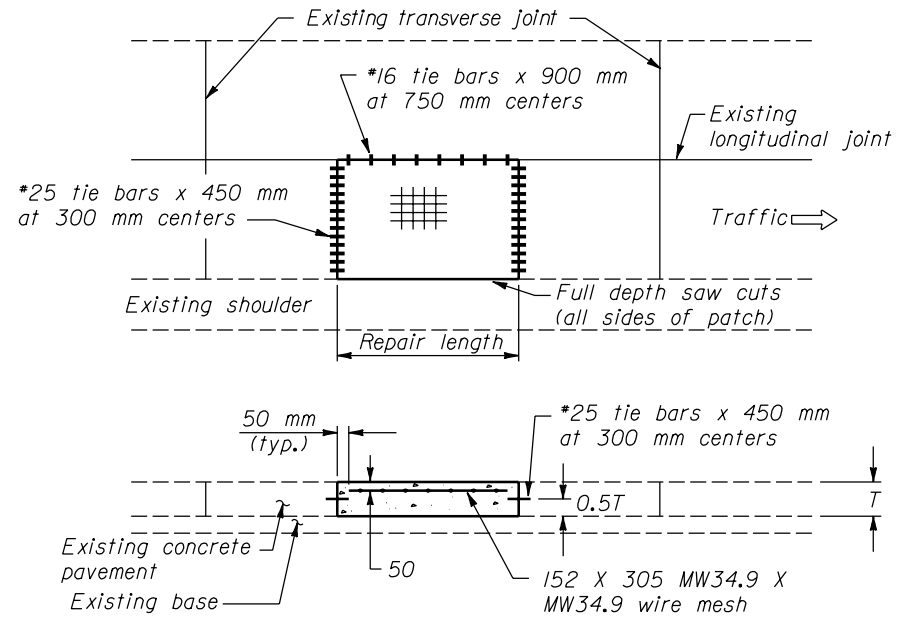
1. Dimensions not labeled are in millimeters.
2. Drill holes for the dowels and tie bars simultaneously to the required depth using frame mounted drills which will maintain the drills parallel to profile and longitudinal joint.
3. Provide epoxy coated tie bars and dowels.
4. See Standard M501-4 for pavement repair saw cuts for lift-out method.
5. Orient wire mesh so that the 300 mm dimension parallels the existing longitudinal joint.
6. An approved two-piece longitudinal tie device may be used in lieu of the #16 tie bars.
7. Construction joints that use #25 tie bars will not require sealing.
8. See Standard M501-1 for reinforcement for full depth concrete pavement repair.



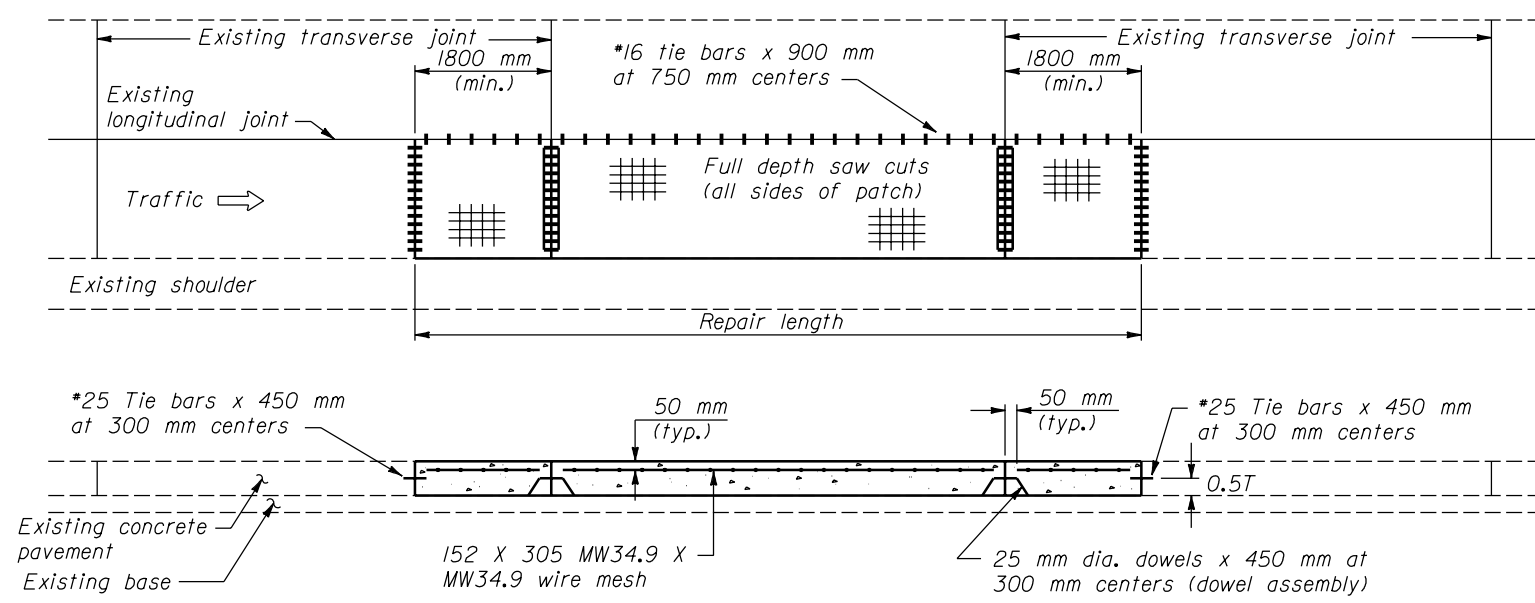
**METHOD A**



**METHOD C**



**METHOD B**



**METHOD D**

U.S. DEPARTMENT OF TRANSPORTATION  
 FEDERAL HIGHWAY ADMINISTRATION  
 FEDERAL LANDS HIGHWAY

**METRIC STANDARD**

**CONCRETE  
 PAVING PATCHING**

STANDARD APPROVED FOR USE 3/1996  
 REVISED: 5/1997

STANDARD  
**M501-3**

NO SCALE

16 NOV 2000 f:\standrow\metric\m501-3.dgn