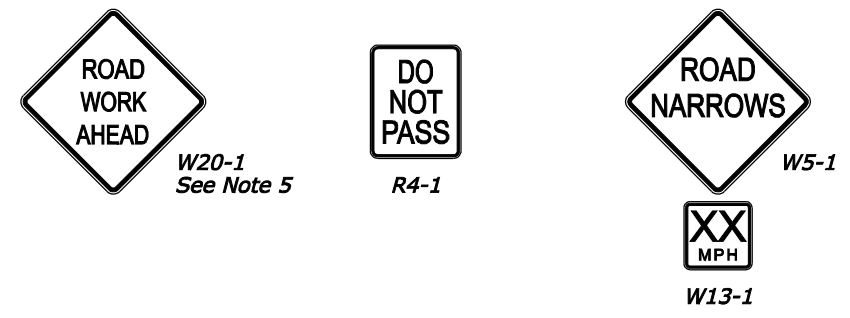
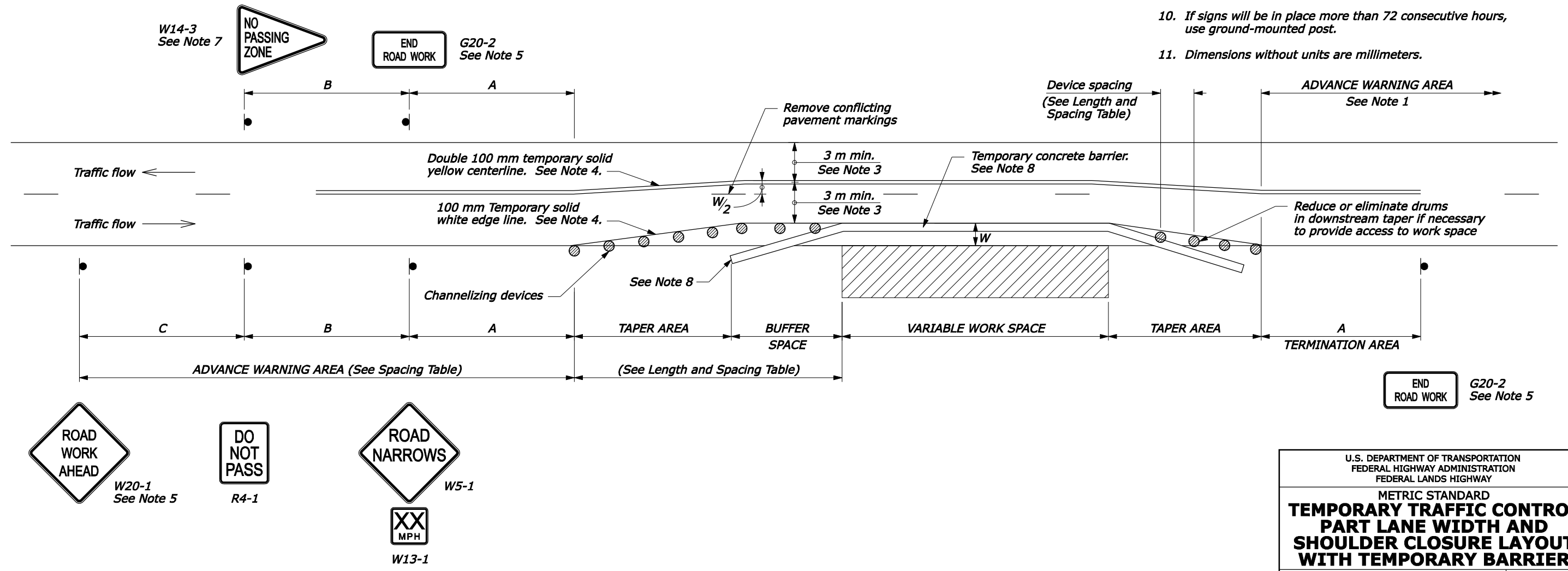


LENGTH AND SPACING TABLE						
APPROACH SPEED*		MINIMUM TAPER LENGTH**	LENGTH OF BUFFER SPACE	CHANNELIZING DEVICE		
MPH	km/h			TAPER AREA	BUFFER SPACE	WORK SPACE
25	40	Shoulder taper formula: $L = \frac{WS^2}{310}$ for $S < 70$ km/h	50	8	15	15
30	50		65	9	18	18
35	55	$L = \frac{WS}{3.2}$ for $S \geq 70$ km/h	75	10	21	21
40	65		95	12	24	24
45	70	Where: L = Minimum length of taper W = Width of offset in meters S = Metric equivalent of posted speed limit or 85 percentile speed prior to work in kilometers per hour	105	14	27	27
50	80		130	15	30	30
55	90		160	16	33	33

SIGN SPACING TABLE			
ROAD TYPE	DISTANCE BETWEEN SIGNS IN METERS		
	A	B	C
Urban less than 70 km/h [≤ 40 MPH]	30	30	30
Urban 70 km/h and greater [≥ 45 MPH]	100	100	100
Rural	150	150	150
Expressway/Freeway	300	450	800

- NOTE:**
- Signs are shown for one direction of travel only. Place devices similar to those depicted for the opposite direction of travel.
 - Final location and spacing of signs and devices may be changed to fit field conditions as approved by the CO.
 - For project specific minimum width, refer to Special Contract Requirements, Section 156.
 - If the roadway surface is paved, install temporary pavement markings. If nearest no-passing zone is within 120 m, extend markings to connect zones.
 - If closure is completely within the project limits, eliminate the "ROAD WORK AHEAD" (W20-1) and "END ROAD WORK" (G20-2) signs.
 - Install "PASS WITH CARE" sign (R4-2) at ends of no-passing zone if directed by the CO.
 - Omit the W14-3 sign if already within a no-passing zone.
 - Place the barrier according to the Roadside Design Guide by the American Association of State Highway and Transportation Officials (AASHTO). Terminate barrier ends outside the clear zone or protect the ends of the barrier with a crash cushion.
 - Do not allow equipment, materials, or vehicles to be parked or stored in the buffer space.
 - If signs will be in place more than 72 consecutive hours, use ground-mounted post.
 - Dimensions without units are millimeters.

* Approach speed based on the regulatory posted speed, not the advisory speed.
 ** Lengthen taper as needed to provide minimum of three channelizing devices in taper at required spacing.



U.S. DEPARTMENT OF TRANSPORTATION
 FEDERAL HIGHWAY ADMINISTRATION
 FEDERAL LANDS HIGHWAY

METRIC STANDARD
TEMPORARY TRAFFIC CONTROL
PART LANE WIDTH AND
SHOULDER CLOSURE LAYOUT
WITH TEMPORARY BARRIER

STANDARD APPROVED FOR USE 6/2005
 STANDARD M635-12

NO SCALE

REVISED: 11/2007
 DRAFT: 11/2007

19-Nov-2007 08:31 AM
 f:\196.145.188.2\scd_plan\m63512.dgn [Metric]