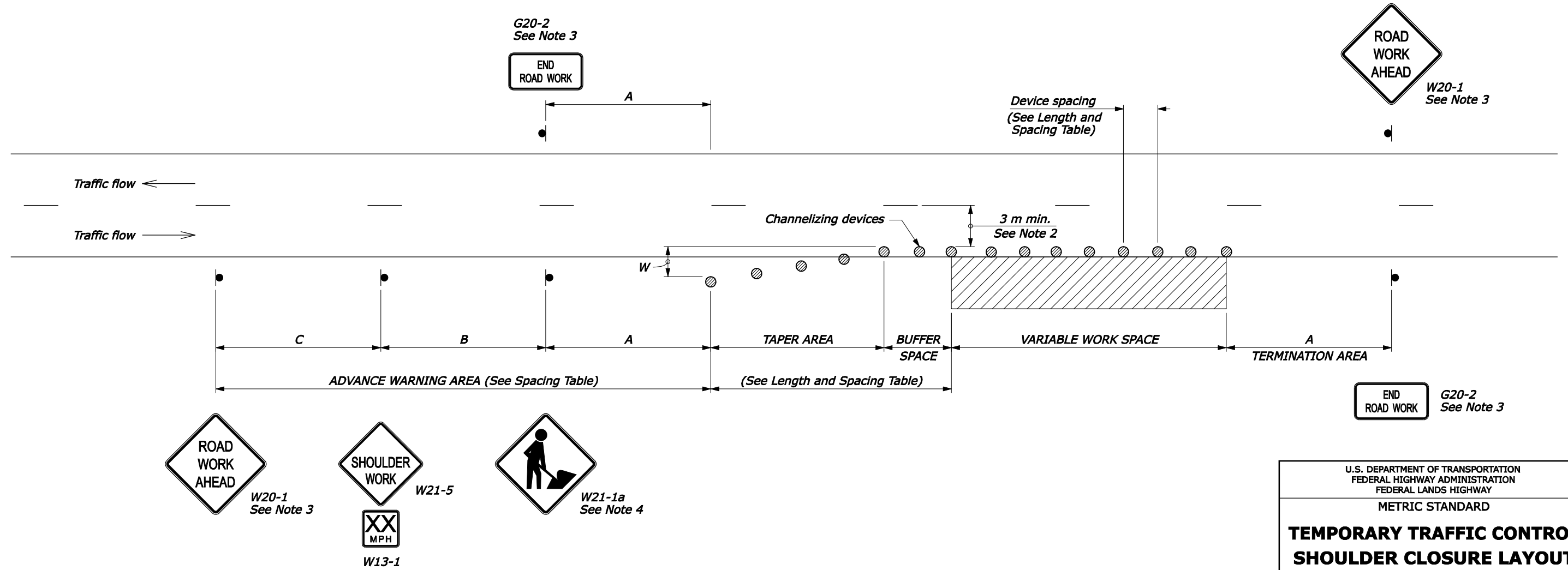


LENGTH AND SPACING TABLE						
APPROACH SPEED*		MINIMUM TAPER LENGTH**	LENGTH OF BUFFER SPACE	CHANNELIZING DEVICE		
MPH	km/h			TAPER AREA	BUFFER SPACE	WORK SPACE
25	40	Shoulder taper formula: $L = \frac{WS^2}{465}$ for $S < 70$ km/h	50	8	15	15
30	50		65	9	18	18
35	55	$L = \frac{WS}{4.8}$ for $S \geq 70$ km/h	75	10	21	21
40	65		95	12	24	24
45	70	Where: L = Minimum length of taper W = Width of offset in meters S = Metric equivalent of posted speed limit or 85 percentile speed prior to work in kilometers per hour	105	14	27	27
50	80		130	15	30	30
55	90		160	16	33	33

* Approach speed based on the regulatory posted speed, not the advisory speed.
 ** Lengthen taper as needed to provide minimum of three channelizing devices in taper at required spacing.

SIGN SPACING TABLE			
ROAD TYPE	DISTANCE BETWEEN SIGNS IN METERS		
	A	B	C
Urban less than 70 km/h [≤ 40 MPH]	30	30	30
Urban 70 km/h and greater [≥ 45 MPH]	100	100	100
Rural	150	150	150
Expressway/Freeway	300	450	800

- NOTE:**
- Final location and spacing of signs and devices may be changed to fit field conditions as approved by the CO.
 - For project specific minimum width, refer to Special Contract Requirements, Section 156.
 - If shoulder closure is completely within the project limits, eliminate the "ROAD WORK AHEAD" (W20-1) and "END ROAD WORK" (G20-2) signs.
 - Remove or cover Workers symbol sign (W21-1a) when workers are not present.
 - Do not allow equipment, materials, or vehicles to be parked or stored in the buffer space.
 - If signs will be in place more than 72 consecutive hours, use ground-mounted post.



U.S. DEPARTMENT OF TRANSPORTATION
 FEDERAL HIGHWAY ADMINISTRATION
 FEDERAL LANDS HIGHWAY
 METRIC STANDARD

**TEMPORARY TRAFFIC CONTROL
 SHOULDER CLOSURE LAYOUT**

STANDARD APPROVED FOR USE 6/2005

REVISED: 1/2007

STANDARD M635-10

NO SCALE

24-Jan-2007 05:38 PM F:\ShanDraw\63510.dgn [Metric]