

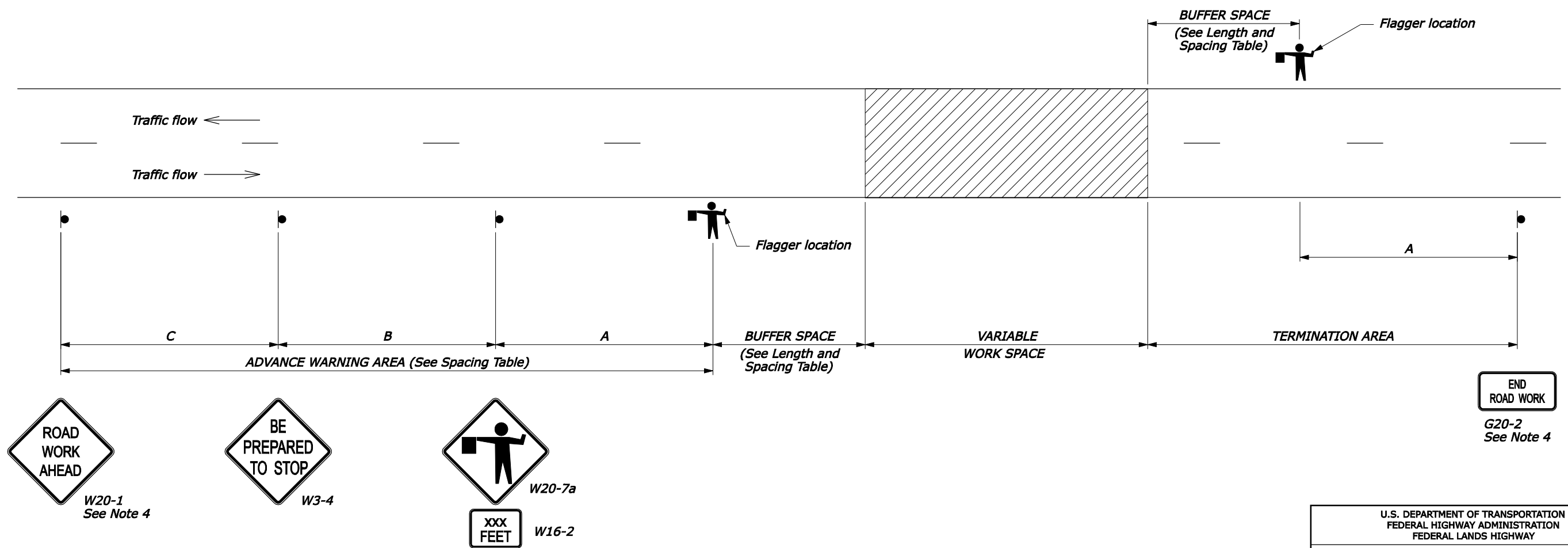
APPROACH SPEED*		LENGTH OF BUFFER SPACE
MPH	km/h	METER
25	40	50
30	50	65
35	55	75
40	65	95
45	70	105
50	80	130
55	90	160

* Approach speed based on the regulatory posted speed, not the advisory speed.

ROAD TYPE	DISTANCE BETWEEN SIGNS IN METERS		
	A	B	C
Urban less than 70 km/h [≤ 40 MPH]	30	30	30
Urban 70 km/h and greater [≥ 45 MPH]	100	100	100
Rural	150	150	150
Expressway/Freeway	300	450	800

NOTE:

1. Signs are shown for one direction of travel only. Place devices similar to those depicted for the opposite direction of travel.
2. Final location and spacing of signs and devices may be changed to fit field conditions as approved by the CO.
3. For pilot car operation, mount the PILOT CAR FOLLOW ME (G20-4) sign at a conspicuous location on the rear of vehicle. Prominently display the name of the Contractor on the pilot car.
4. If closure is completely within the project limits, eliminate the "ROAD WORK AHEAD" (W20-1) and "END ROAD WORK" (G20-2) signs.
5. For night time flagging operation, provide floodlighting at flagger stations.
6. Do not allow equipment, materials, or vehicles to be parked or stored in the buffer space.
7. If signs will be in place more than 72 consecutive hours, use ground-mounted post.



W20-1
See Note 4



W3-4



W20-7a



W16-2



G20-2
See Note 4

U.S. DEPARTMENT OF TRANSPORTATION
FEDERAL HIGHWAY ADMINISTRATION
FEDERAL LANDS HIGHWAY

METRIC STANDARD

**TEMPORARY TRAFFIC CONTROL
ROAD CLOSURE LAYOUT
(WITH FLAGGERS)**

STANDARD APPROVED FOR USE 6/2005

REVISOR: _____

STANDARD
M635-5

NO SCALE