

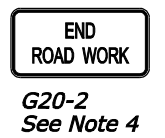
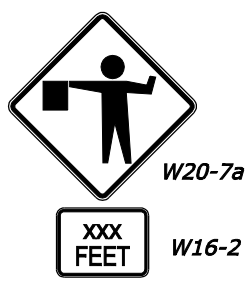
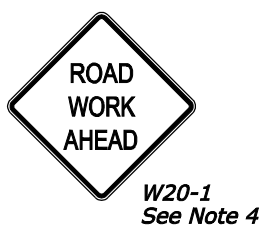
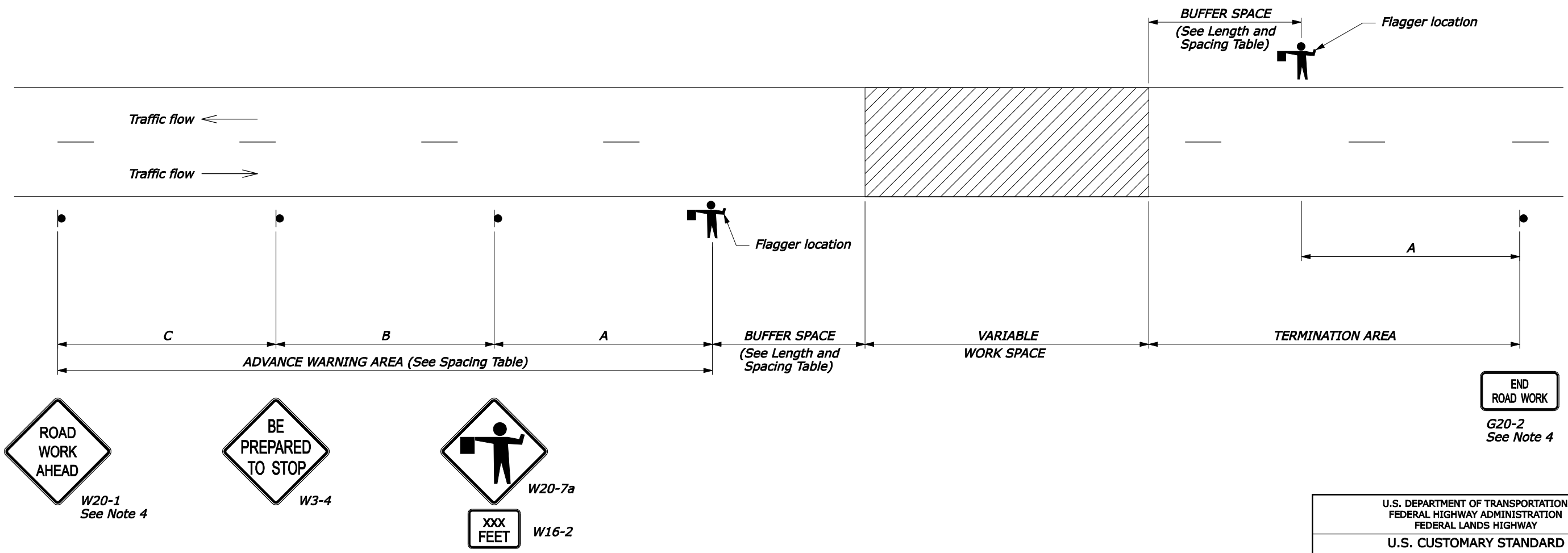
APPROACH SPEED*	LENGTH OF BUFFER SPACE
MPH	FEET
25	155
30	200
35	250
40	305
45	360
50	425
55	495

* Approach speed based on the regulatory posted speed, not the advisory speed.

ROAD TYPE	DISTANCE BETWEEN SIGNS IN FEET		
	A	B	C
Urban 40 MPH and less	100	100	100
Urban 45 MPH and greater	350	350	350
Rural	500	500	500
Expressway/Freeway	1000	1500	2640

NOTE:

1. Signs are shown for one direction of travel only. Place devices similar to those depicted for the opposite direction of travel.
2. Final location and spacing of signs and devices may be changed to fit field conditions as approved by the CO.
3. For pilot car operation, mount the PILOT CAR FOLLOW ME (G20-4) sign at a conspicuous location on the rear of vehicle. Prominently display the name of the Contractor on the pilot car.
4. If closure is completely within the project limits, eliminate the "ROAD WORK AHEAD" (W20-1) and "END ROAD WORK" (G20-2) signs.
5. For night time flagging operation, provide floodlighting at flagger stations.
6. Do not allow equipment, materials, or vehicles to be parked or stored in the buffer space.
7. If signs will be in place more than 72 consecutive hours, use ground-mounted post.



NO SCALE

U.S. DEPARTMENT OF TRANSPORTATION
FEDERAL HIGHWAY ADMINISTRATION
FEDERAL LANDS HIGHWAY

U.S. CUSTOMARY STANDARD

**TEMPORARY TRAFFIC CONTROL
ROAD CLOSURE LAYOUT
(WITH FLAGGERS)**

STANDARD APPROVED FOR USE 6/2005

REVISIONS:

STANDARD
635-5