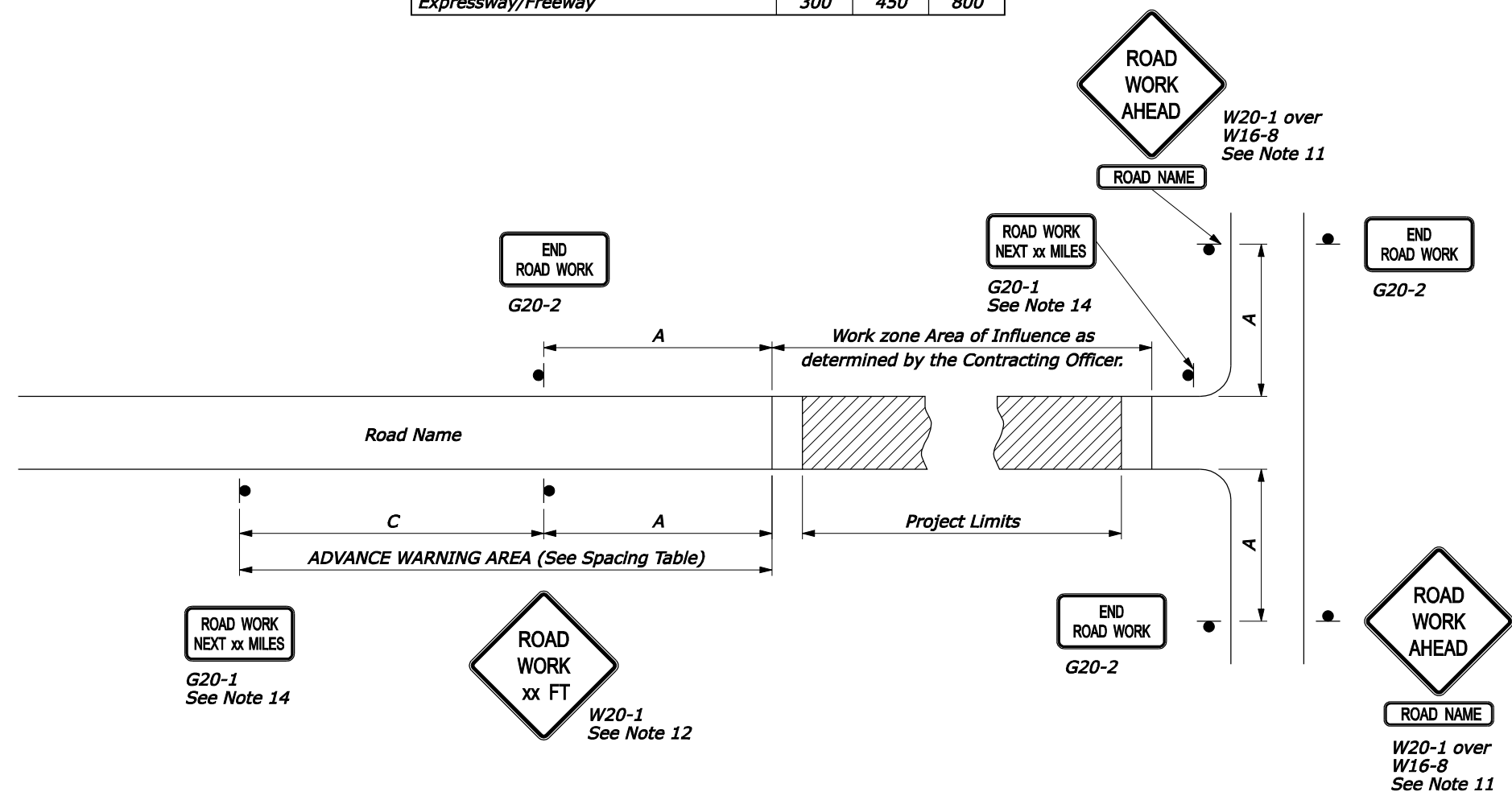


SIGN SPACING TABLE			
ROAD TYPE	DISTANCE BETWEEN SIGNS IN METERS		
	A	B	C
Urban less than 70 km/h [≤ 40 MPH]	30	30	30
Urban 70 km/h and greater [≥ 45 MPH]	100	100	100
Rural	150	150	150
Expressway/Freeway	300	450	800

NOTE:

- Erect all advance warning signs before starting construction work.
- Not all details shown on the temporary traffic control sheets may be applicable to this project. The Contractor may add or delete information and details in this traffic control plan as necessary to accommodate actual operations.
- Where advance warning signs, placed as shown, interfere with permanent signs, locate the warning signs as determined by the CO for best results. Vary messages as required.
- Use Type III or higher type sheeting on all signs and channelizing devices. Warning lights are not normally needed on devices with Type III or higher type sheeting, but may be beneficial to attract the drivers attention in fog or other special conditions. When used, apply the appropriate type of warning light (Type A, B, C, or D) per the MUTCD Chapter 6F.
- When established in the contract, furnish beacons with the appropriate lens color as specified in the MUTCD Chapter 4K.
- Additional or different message signs may be required to fit the actual construction conditions.
- Install advisory speed plates under the W-20 series warning signs as needed to indicate a maximum recommended speed through the construction area.
- Ensure all sign supports exposed to impact by traffic meet the requirements of NCHRP-350 for crash worthiness.
- Maintain two-way traffic during all non-work hours except as approved by the CO.
- Do not store traffic control devices along the roadway when not in use. Cover post-mounted signs when not applicable.
- If W20-1 is on a roadway other than that on which the actual construction work occurs, include a supplementary plaque indicating the name of the road the work is on.
- The message on the W20-1 signs may be "ROAD WORK AHEAD" or may specify the distance to the work area in feet or in miles. Install an additional W20-1 sign when approach speeds exceed 80 km/h [50 MPH]. When used place the two W20-1 signs "B" meters apart.
- When flagger warning sign series extend into project advance warning area, the second and third signs in the flagger series may be placed over the W20-1 sign(s) in project advance warning series.
- For work zones that are greater than 3 km in length, install G20-1 sign. Show the distance on the G20-1 sign to the nearest whole mile.
- If signs will be in place more than 72 consecutive hours, use ground-mounted post.
- If signing on a roadway under a jurisdiction other than the client agency, verify that an encroachment permit has been obtained.
- State standards may be used as an alternative if approved by the CO.



30-Mar-2006 06:25 AM
F:\ShanDraw\st63501.dgn [Metric]

NO SCALE

U.S. DEPARTMENT OF TRANSPORTATION FEDERAL HIGHWAY ADMINISTRATION FEDERAL LANDS HIGHWAY	
METRIC STANDARD	
TEMPORARY TRAFFIC CONTROL ADVANCE SIGNING	
STANDARD APPROVED FOR USE 6/2005	STANDARD M635-1
REVISED: DRAFT: 3/2006	