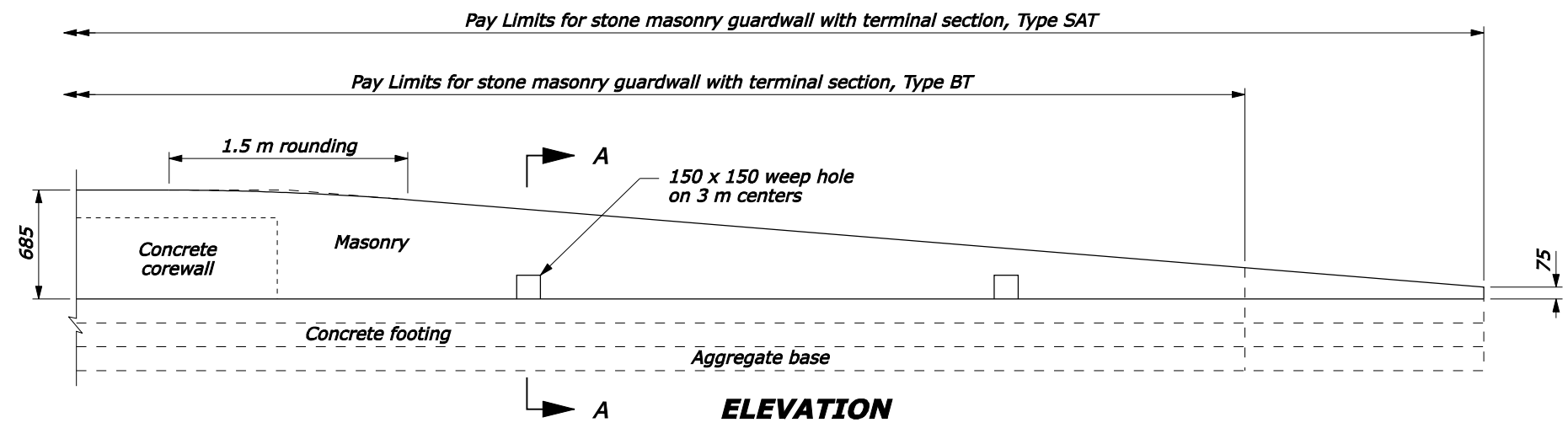


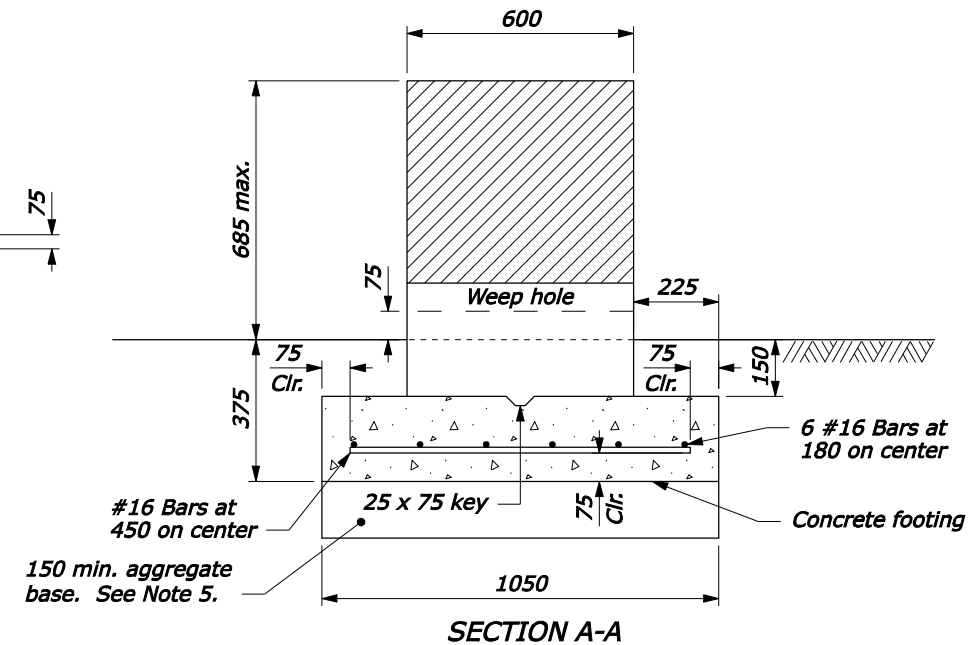
PLAN

NOTE:

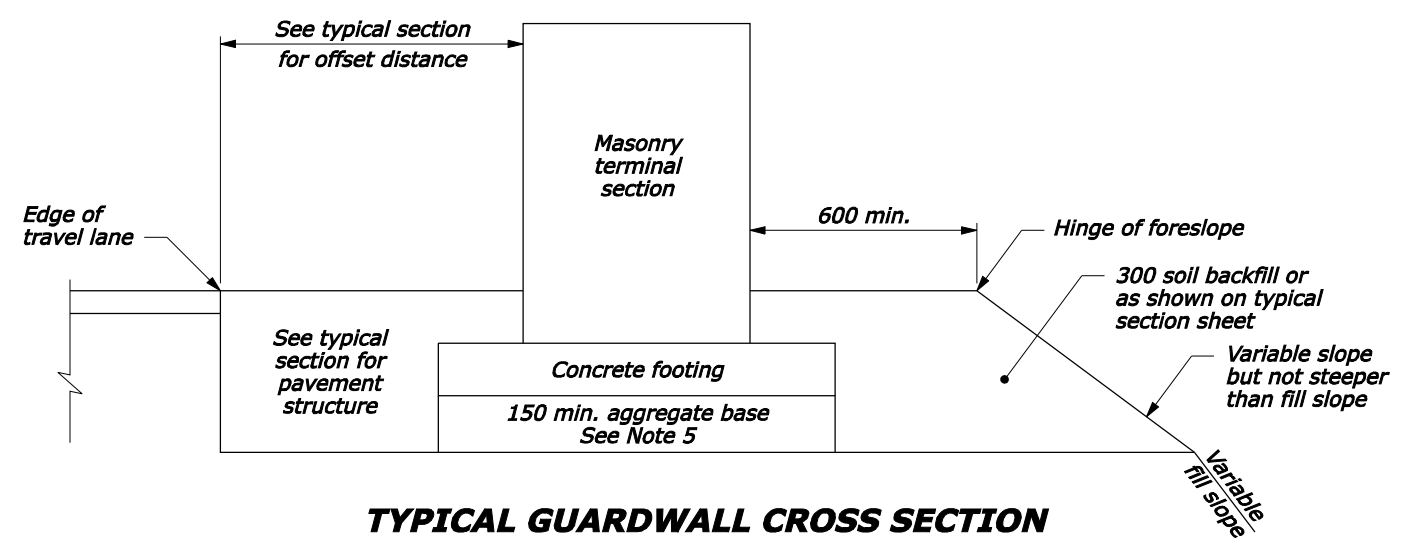
1. The Type SAT (Stand alone terminal) terminal section or the Type BT (Buried terminal) terminal section to be used as specified.
2. For the Type BT terminal section the last 1.5 m of the Type SAT terminal section is deleted. See Standard M204-1, Earth berm for roadside barrier terminal section, for construction of the earth berm.
3. Extend the fill widening a minimum of 1.5 m behind the guardwall for the Type SAT terminal section, unless otherwise directed.
4. The guardwall flare shown in the plan view is the minimum length and rate required. Flare the guardwall so that the terminal section is outside the clear zone as directed by the CO.
5. The depth of base may be less than 150 mm as directed by the CO, when the foundation is on either rock fill or solid rock.
6. Ensure guardrail terminal section is outside the clear zone by using appropriate flare rate in guardrail layout and as directed by CO.
7. Dimensions without units are millimeters.



ELEVATION



SECTION A-A



TYPICAL GUARDWALL CROSS SECTION

GUARDWALL FLARE RATE TABLE			
Design Speed (km/h)	Shy line offset (meters)	Flare rate inside shy line (a:b)	Flare rate outside shy line (a:b)
100	2.4	26:1	18:1
80	2.0	21:1	14:1
60	1.4	16:1	10:1
50 or less	1.1	13:1	8:1

U.S. DEPARTMENT OF TRANSPORTATION
FEDERAL HIGHWAY ADMINISTRATION
FEDERAL LANDS HIGHWAY
METRIC STANDARD

**STONE MASONRY GUARDWALL
TERMINAL SECTIONS
TYPE SAT AND TYPE BT**

STANDARD APPROVED FOR USE 3/1996
REVISED: 6/1997 6/2005

STANDARD
M620-3

NO SCALE

06-Nov-2007 09:28 AM
 fhp://196.145.188.2/scd_plan/m62003.dgn [Metric]