

**POST CONNECTION**

NO SCALE

**NOTE:**

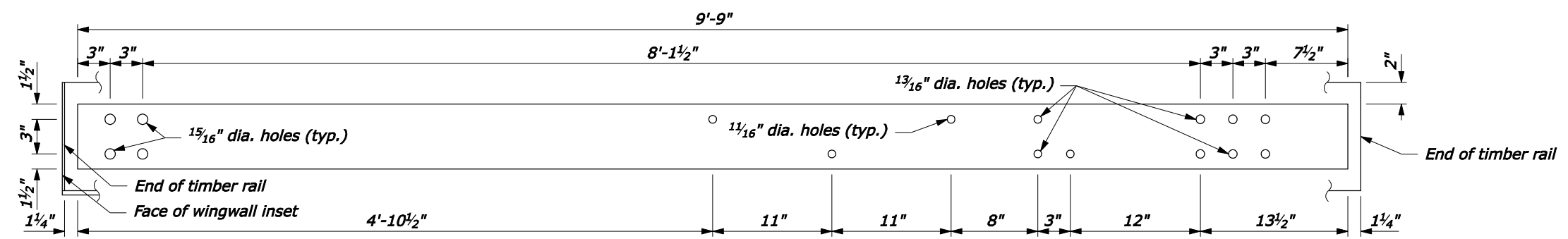
1. See the following sheets for Sections A-A through C-C, steel rail layouts, and other details.
2. Use weathering steel for all structural steel and fastener hardware.

U.S. DEPARTMENT OF TRANSPORTATION  
FEDERAL HIGHWAY ADMINISTRATION  
FEDERAL LANDS HIGHWAY

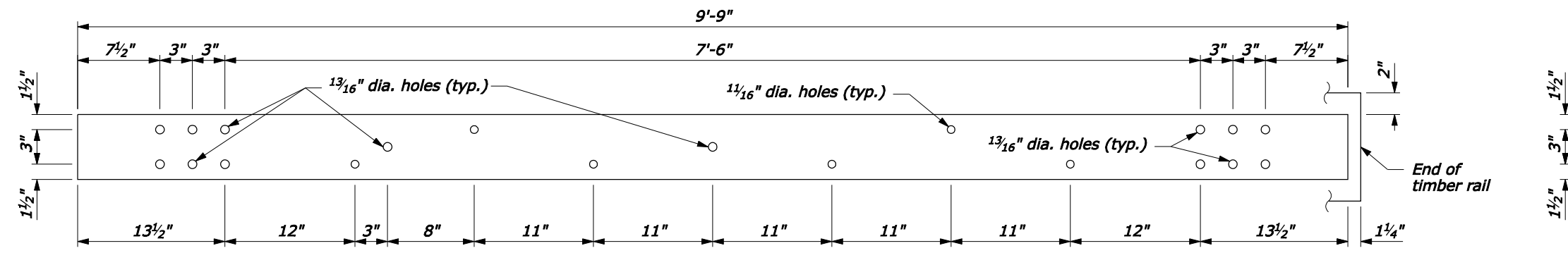
U.S. CUSTOMARY STANDARD  
**STEEL-BACKED TIMBER GUARDRAIL  
CONNECTION TO  
CURVED BACK STRUCTURE**  
Sheet 1 of 3

STANDARD APPROVED FOR USE 1/1994	STANDARD
REVISED: 4/1994	617-66
DRAFT: 1/2008	

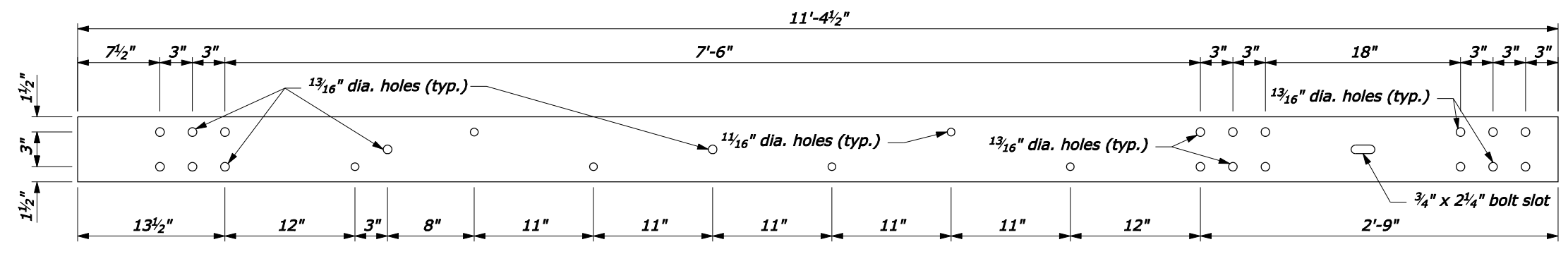
P:\198.145.186.2\std. plan\std61766.dgn [US Customary] 23-Jan-2008 04:08 PM



**TERMINAL SECTION RAIL**  
6" x 3/8" x 9'-9"

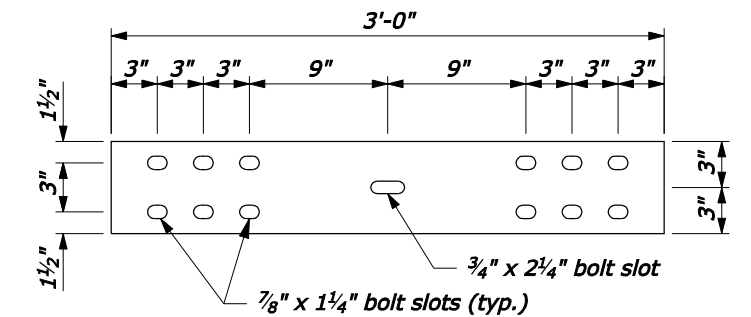


**TRANSITION RAIL**  
6" x 3/8" x 9'-9"

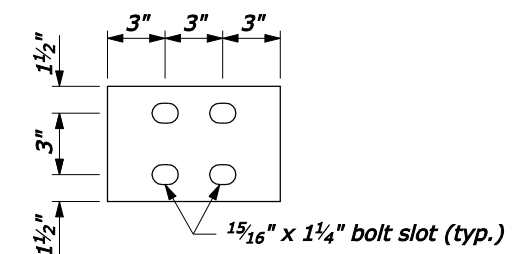


**TRANSITION SPLICE RAIL**  
6" x 3/8" x 11'-4 1/2"

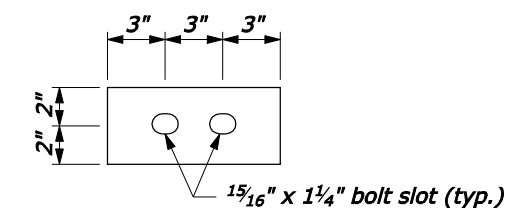
**NOTE:**  
1. Pre-drill 5/8-inch holes in timber rail and 3/8-inch holes in the wood spacer block for the 5/8-inch lag screws.



**SPLICE PLATE**  
6" x 3/8" x 3'-0"

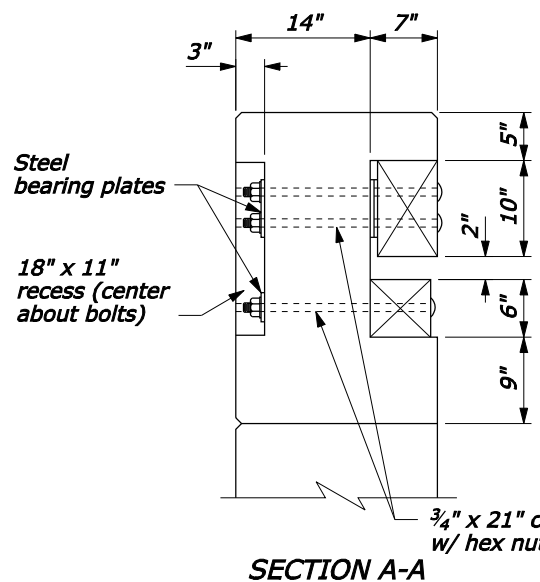


6" x 3/8" x 9"

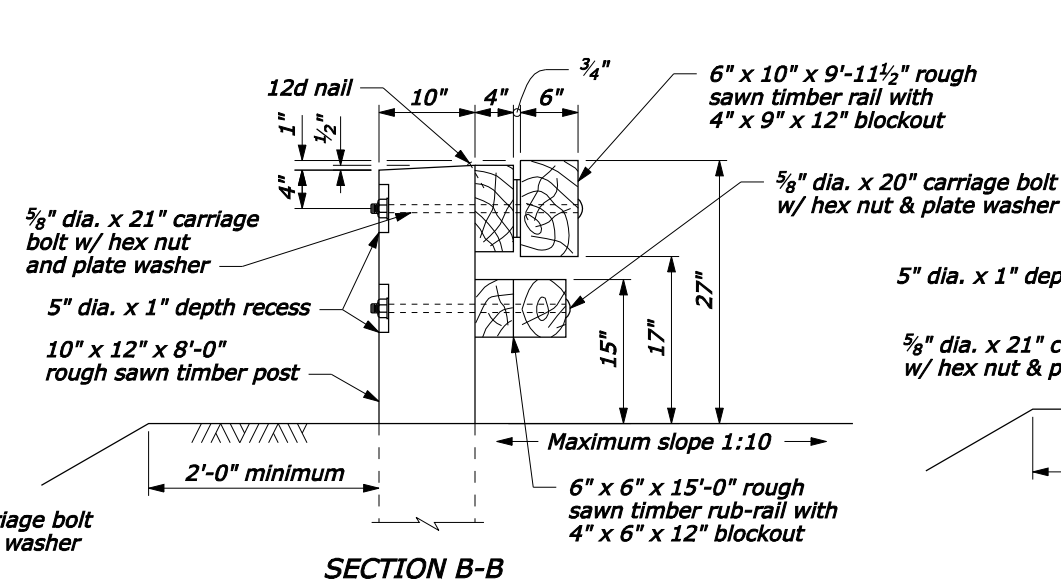


4" x 3/8" x 9"

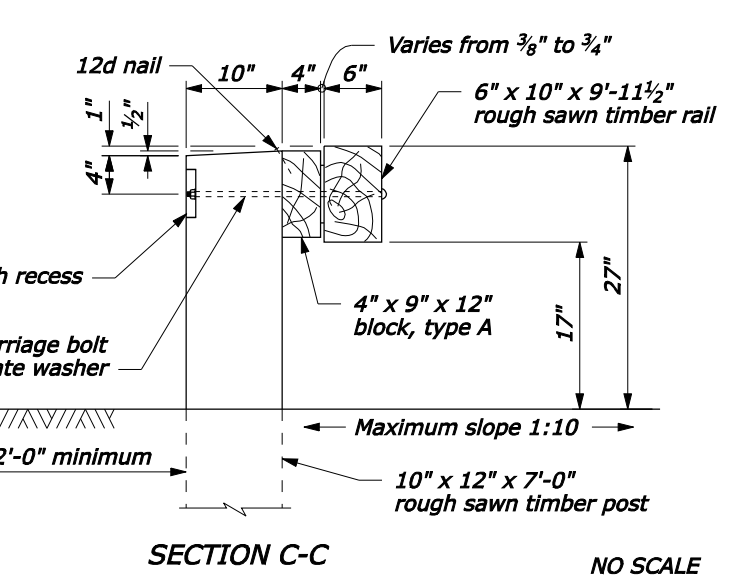
**BEARING PLATE DETAILS**



SECTION A-A



SECTION B-B



SECTION C-C

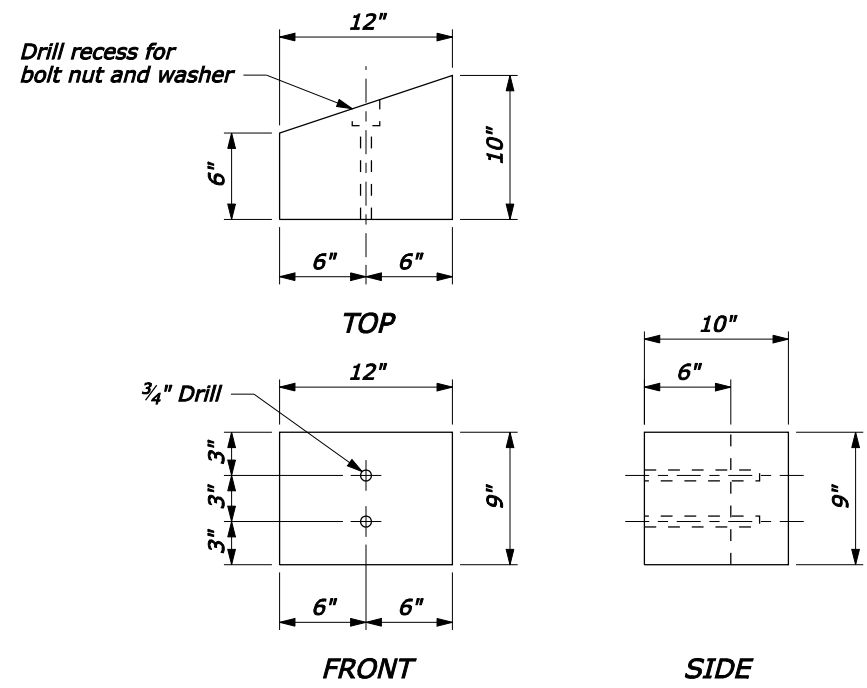
NO SCALE

U.S. DEPARTMENT OF TRANSPORTATION  
FEDERAL HIGHWAY ADMINISTRATION  
FEDERAL LANDS HIGHWAY

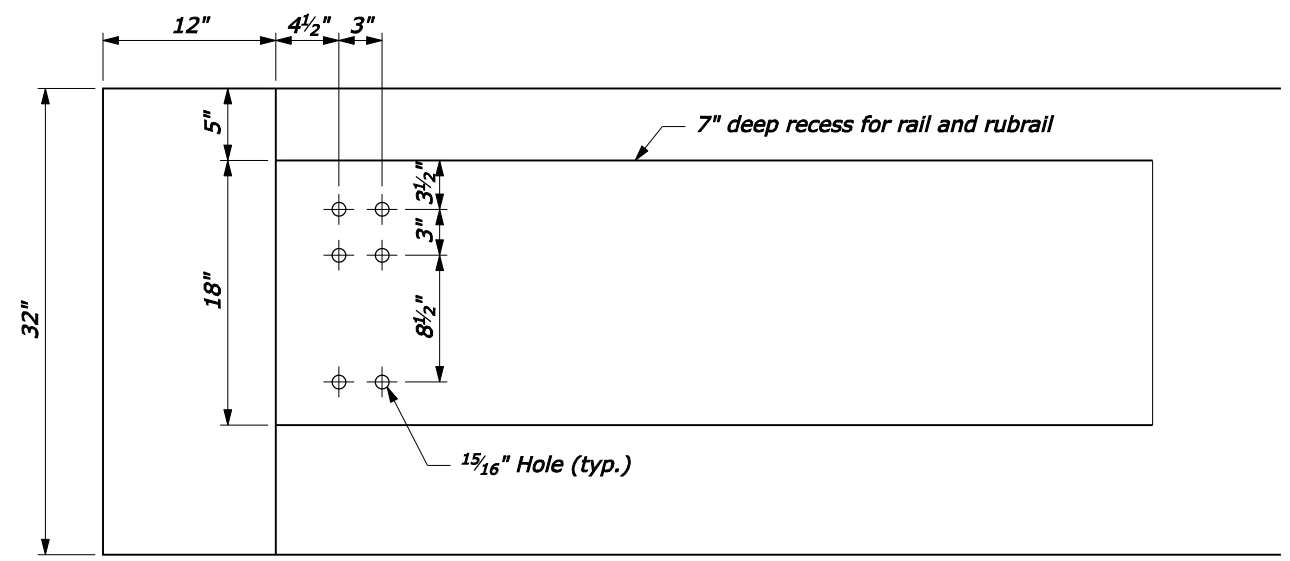
U.S. CUSTOMARY STANDARD  
**STEEL-BACKED TIMBER GUARDRAIL CONNECTION TO CURVED BACK STRUCTURE**  
Sheet 2 of 3

STANDARD APPROVED FOR USE 1/1994	STANDARD
REVISED: 4/1994	617-66
DRAFT: 1/2008	

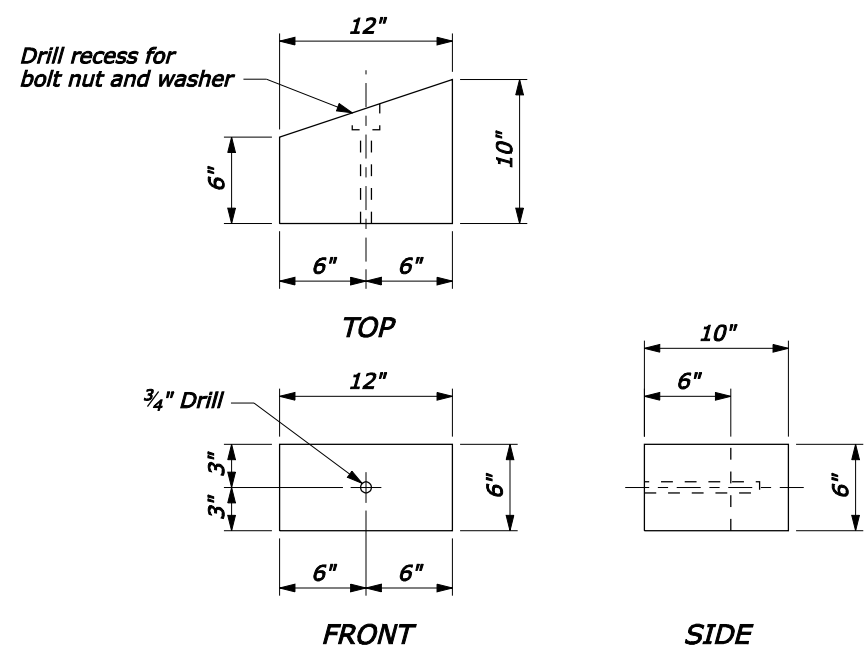
23-Jan-2008 04:08 PM  
Rpt://198.145.186.2/std.pln/st61766.dgn [US Customary]



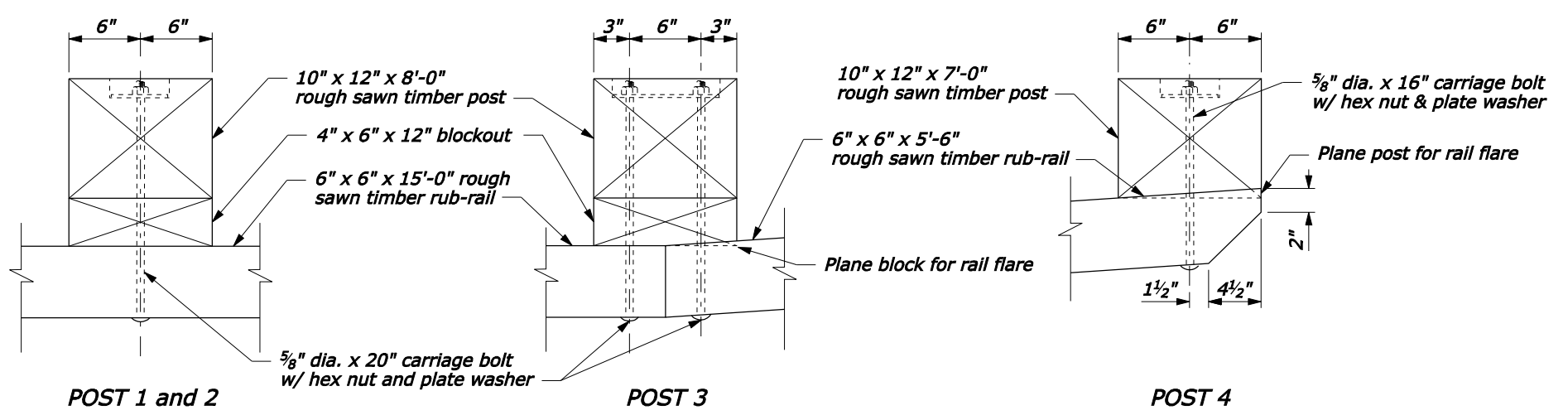
**SPACER BLOCK FOR RAIL**



**PARAPET ATTACHMENT DETAIL**



**SPACER BLOCK FOR RUB-RAIL**



**RUB-RAIL CONNECTIONS**

NO SCALE

U.S. DEPARTMENT OF TRANSPORTATION FEDERAL HIGHWAY ADMINISTRATION FEDERAL LANDS HIGHWAY	
U.S. CUSTOMARY STANDARD <b>STEEL-BACKED TIMBER GUARDRAIL CONNECTION TO CURVED BACK STRUCTURE</b> Sheet 3 of 3	
STANDARD APPROVED FOR USE 1/1994	STANDARD
REVISED: 4/1994 DRAFT: 1/2008	617-66

P:\198.145.186.2\std\_plan\std61766.dgn [US Customary] 23-Jan-2008 04:09 PM