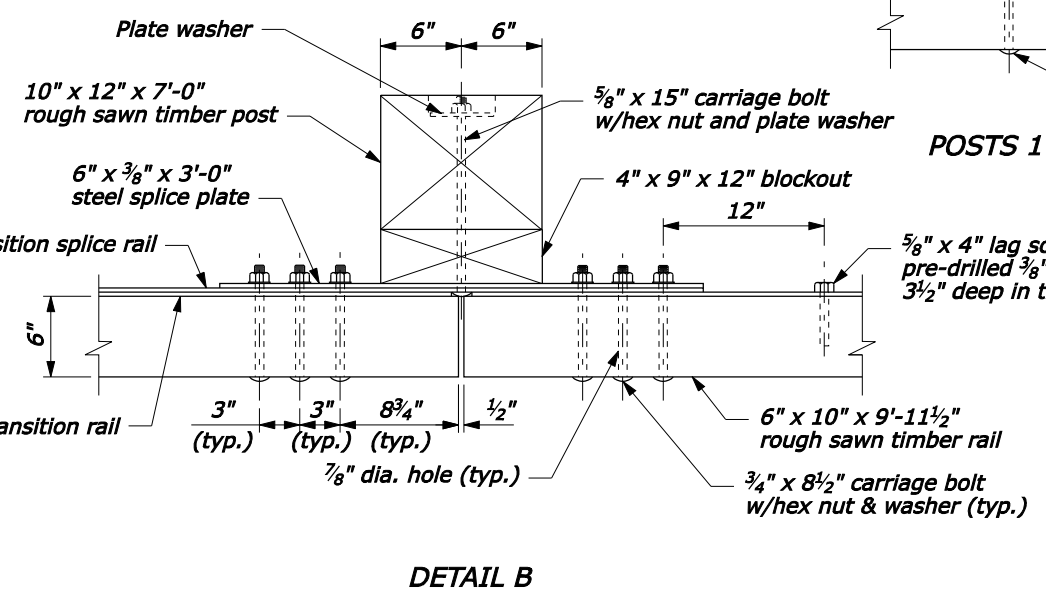
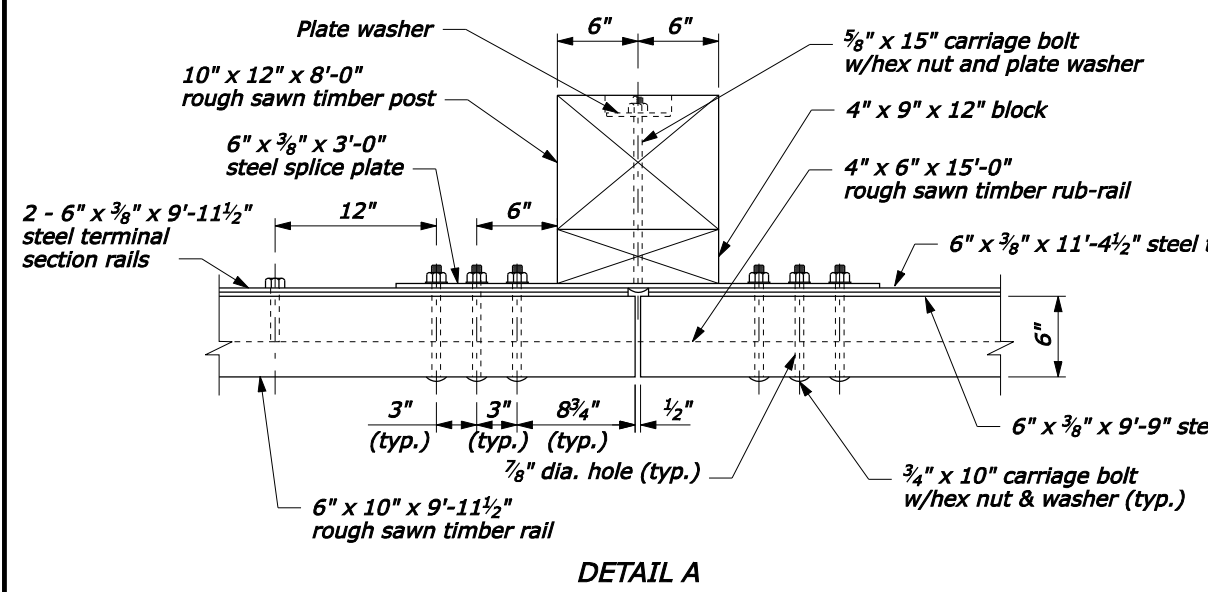
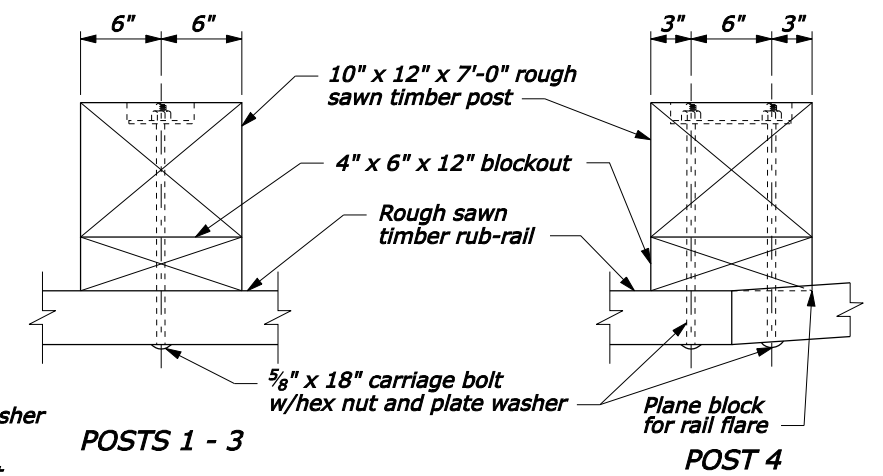
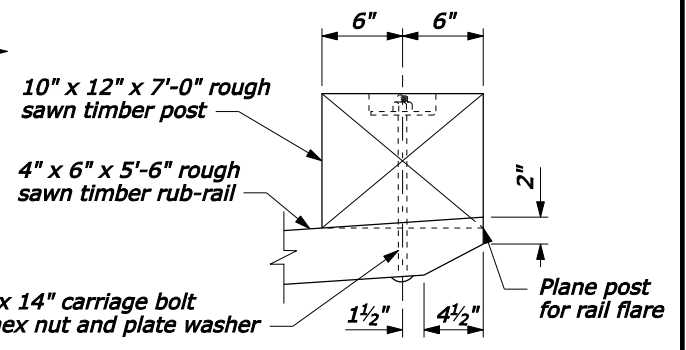
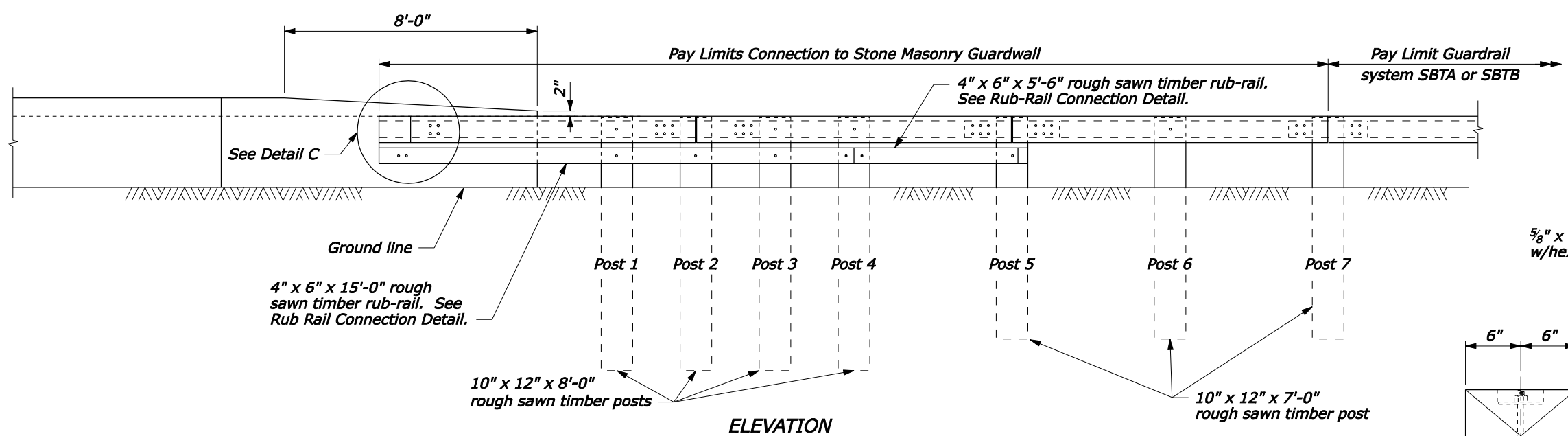


- NOTE:**
1. See the following sheets for Sections A-A through C-C, steel rail layouts, and other details.
 2. Use weathering steel for all structural steel and fastener hardware.
 3. For posts 1, 3, and 4, use an 8" x 9" x 12" block for the blockout, and a 5/8" x 2'-1 1/2" carriage bolt with hex nut and plate washer.



RUB-RAIL CONNECTION

POST CONNECTION

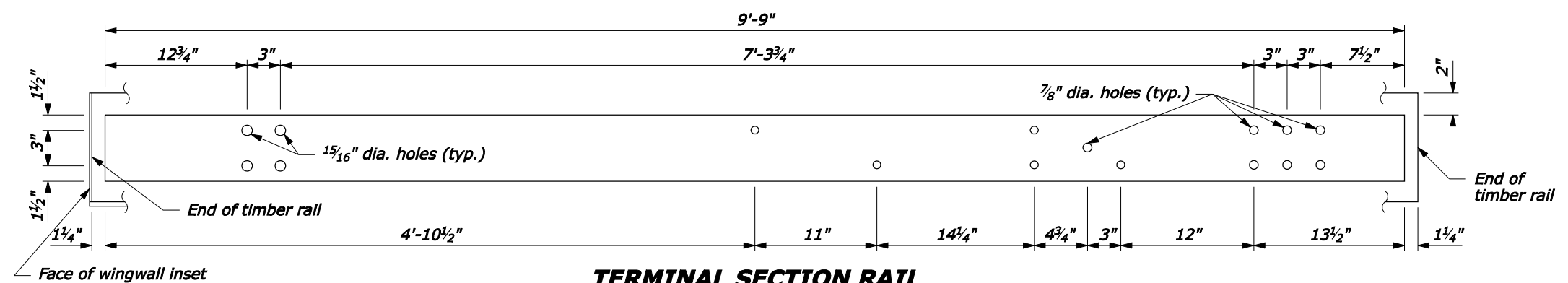
NO SCALE

U.S. DEPARTMENT OF TRANSPORTATION
FEDERAL HIGHWAY ADMINISTRATION
FEDERAL LANDS HIGHWAY

U.S. CUSTOMARY STANDARD
**STEEL-BACKED TIMBER GUARDRAIL
TL-2 CONNECTION TO
STONE MASONRY GUARDWALL**
Sheet 1 of 3

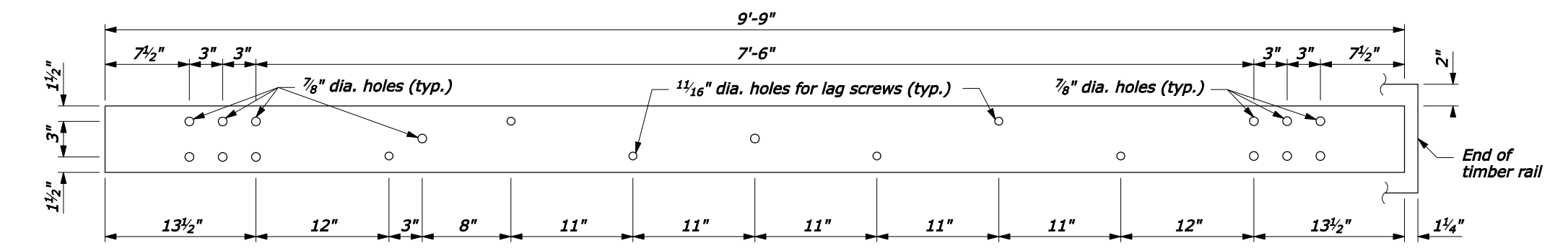
STANDARD APPROVED FOR USE --/----	STANDARD
REVISED:	617-64
DRAFT: 1/2008	

14-Jan-2008 04:06 PM P:\198.145.186.2\std.pln\std61764.dgn [US Customary]

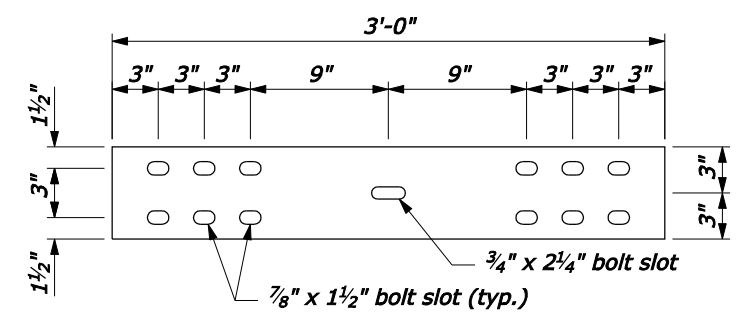


TERMINAL SECTION RAIL
6" x 3/8" x 9'-9"

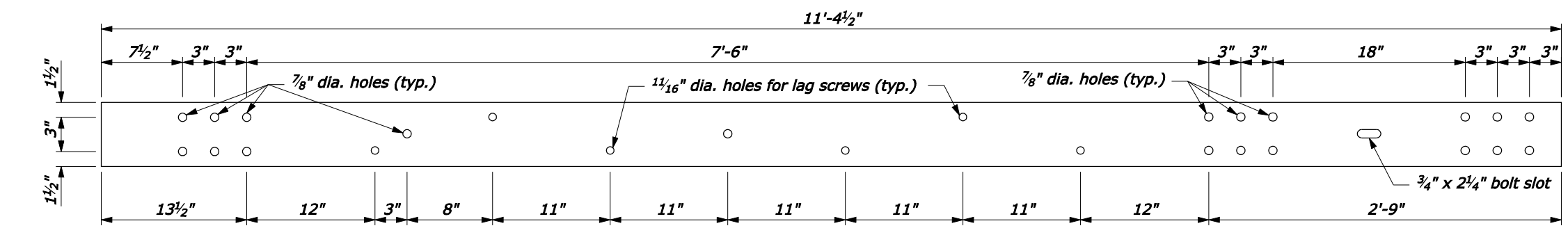
NOTE:
1. Pre-drill 3/4" holes in blocks outs and posts.



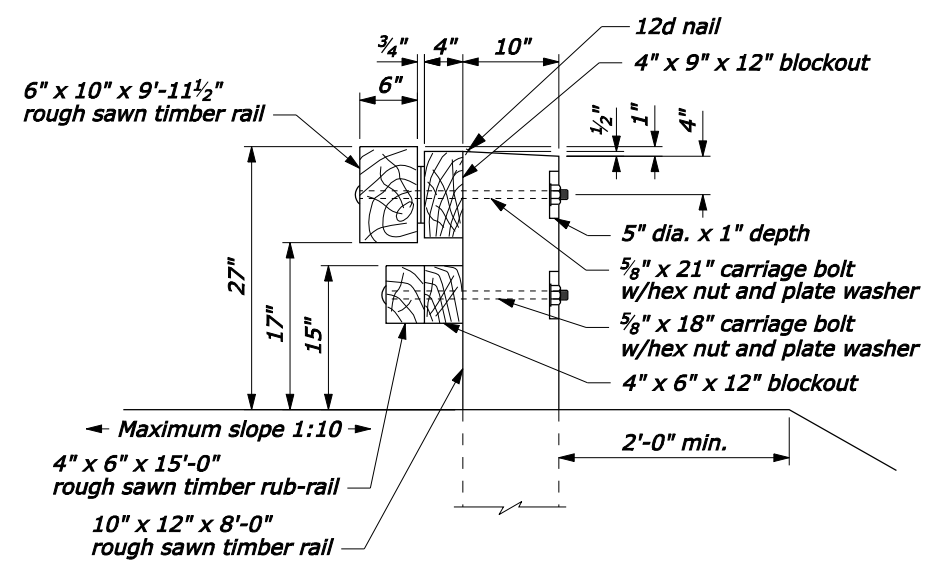
TRANSITION RAIL
6" x 3/8" x 9'-9"



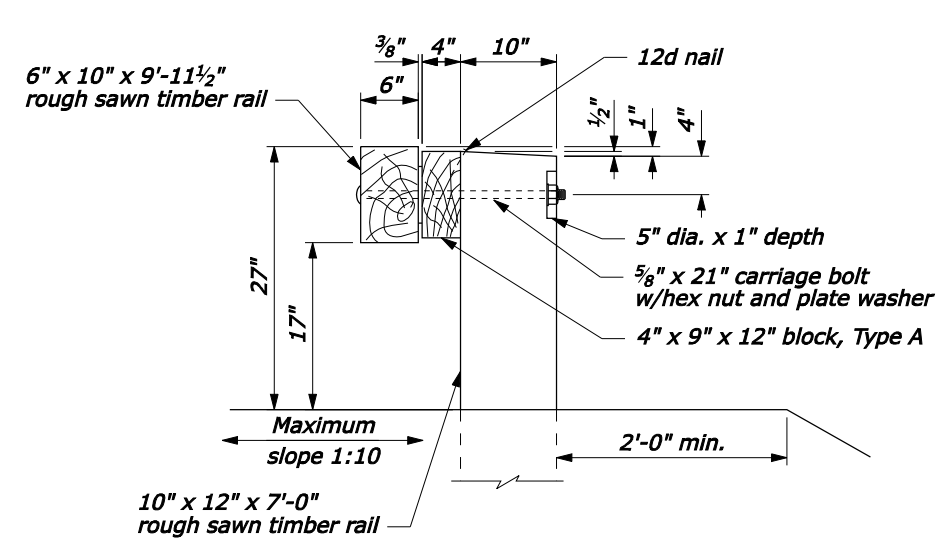
SPLICE PLATE
6" x 3/8" x 3'-0"



TRANSITION SPLICE RAIL
6" x 3/8" x 11'-4 1/2"



SECTION A-A



SECTION B-B

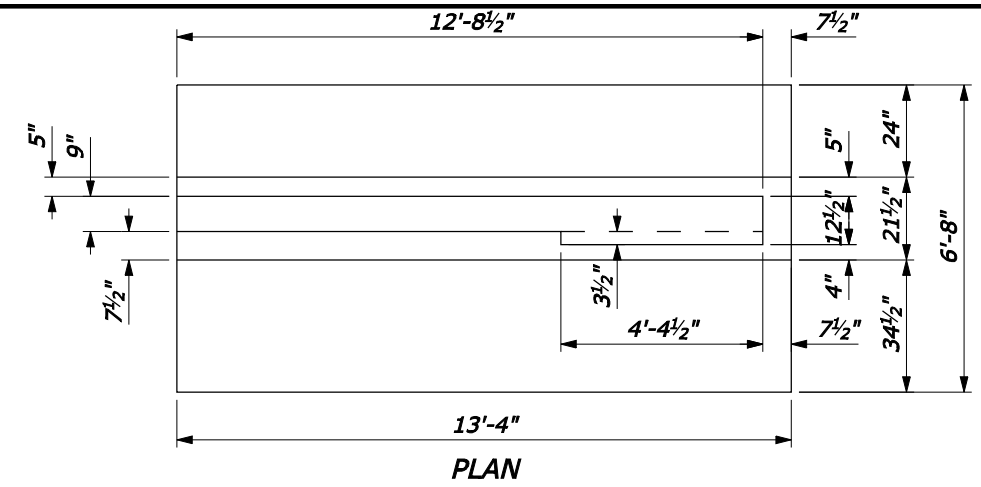
NO SCALE

U.S. DEPARTMENT OF TRANSPORTATION
FEDERAL HIGHWAY ADMINISTRATION
FEDERAL LANDS HIGHWAY

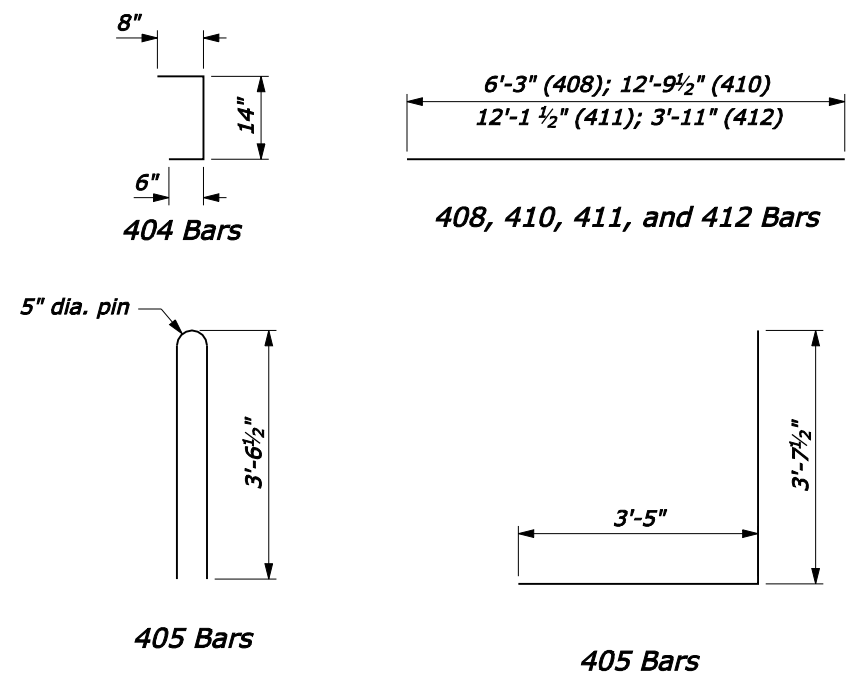
U.S. CUSTOMARY STANDARD
**STEEL-BACKED TIMBER GUARDRAIL
TL-2 CONNECTION TO
STONE MASONRY GUARDWALL**
Sheet 2 of 3

STANDARD APPROVED FOR USE --/----	STANDARD
REVISED: DRAFT: 1/2008	617-64

14-Jan-2008 04:06 PM
P:\198.145.186.2\std.2\std.pln\std1764.dgn [US Customary]



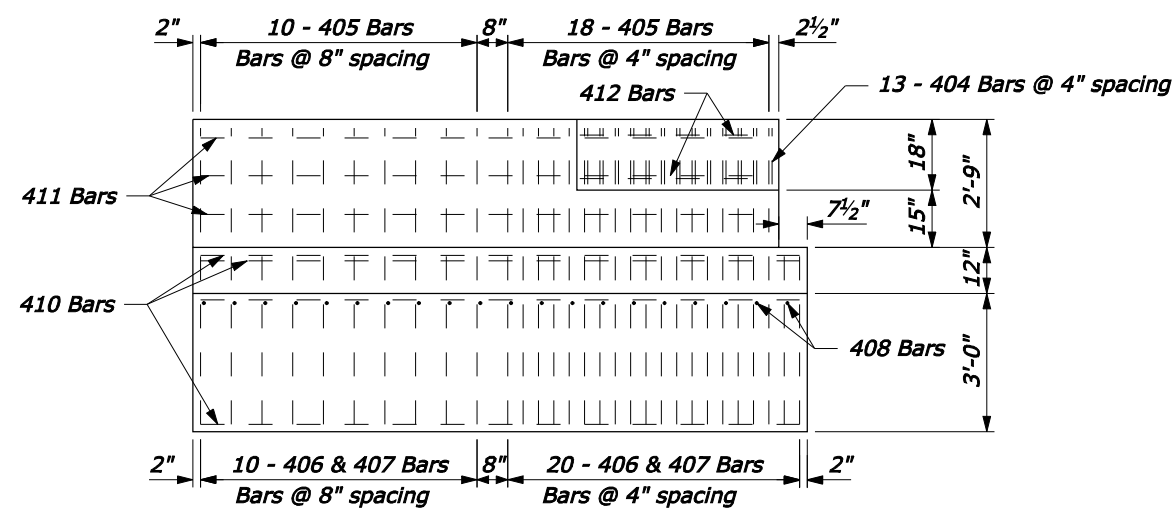
PLAN



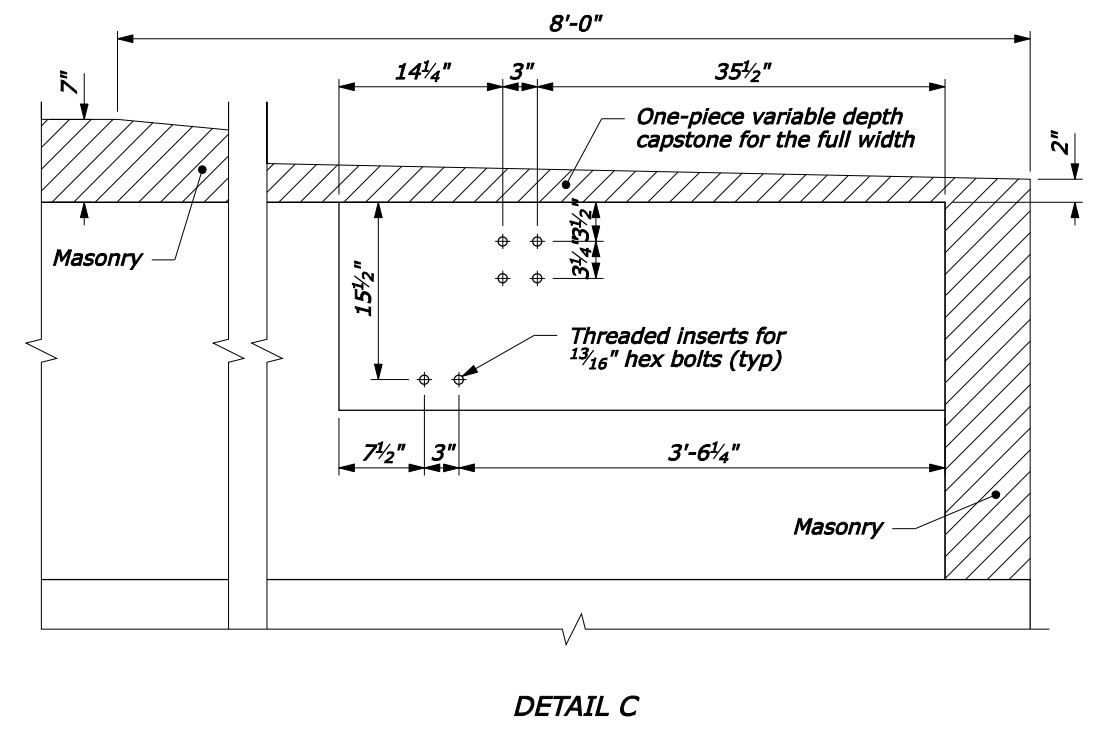
BAR DETAILS

NOTE:

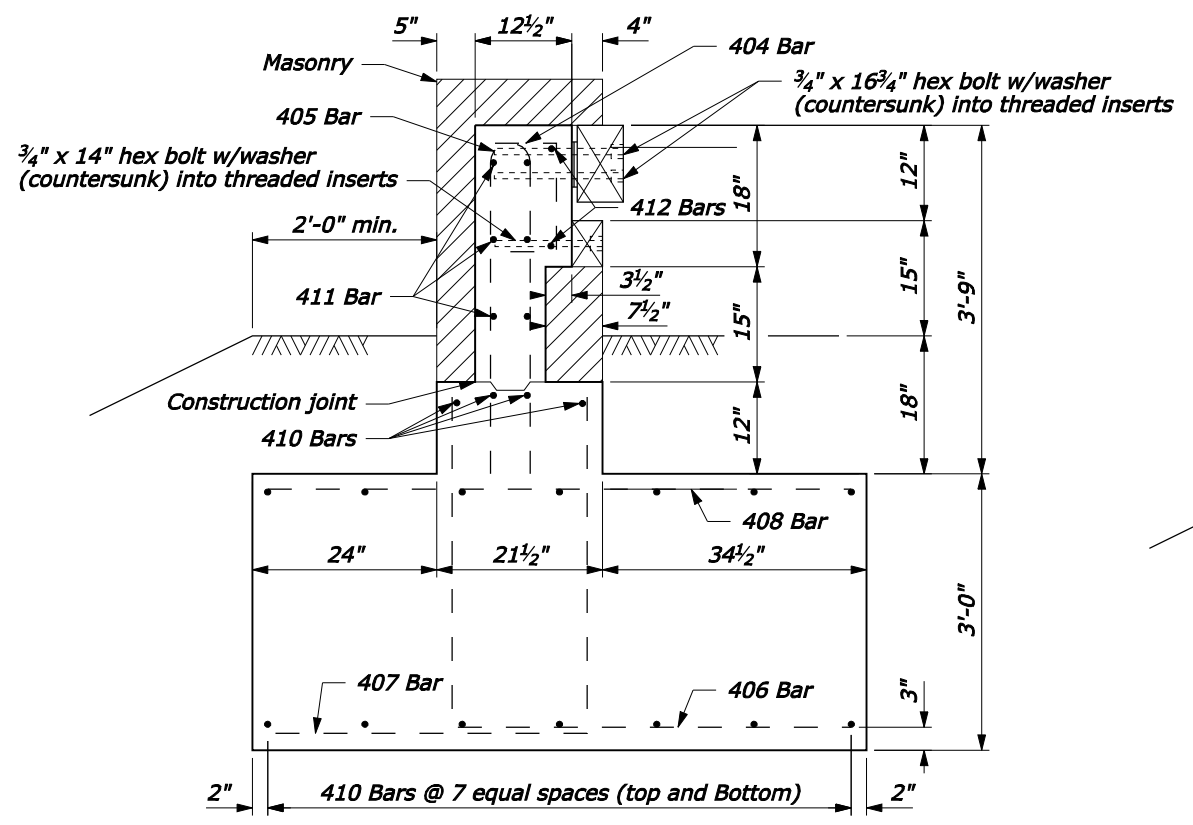
1. CONCRETE: Structural concrete Class A(AE), with a specified minimum 28-day compressive strength $F'_c=4350$ psi. Vibrate all concrete. Chamfer exposed edges 3/4" unless otherwise shown. Do not use calcium chloride additives in the concrete.
2. REINFORCING STEEL: Reinforcing steel Grade 420 (ASTM A615M-96a, Grade 420) deformed billet steel bars conforming to AASHTO M31M. The minimum concrete covering to the face of any bar is 2" unless otherwise shown. All bars are US Customary size #5.
3. Construct footing against undisturbed material or backfill with well compacted granular material.



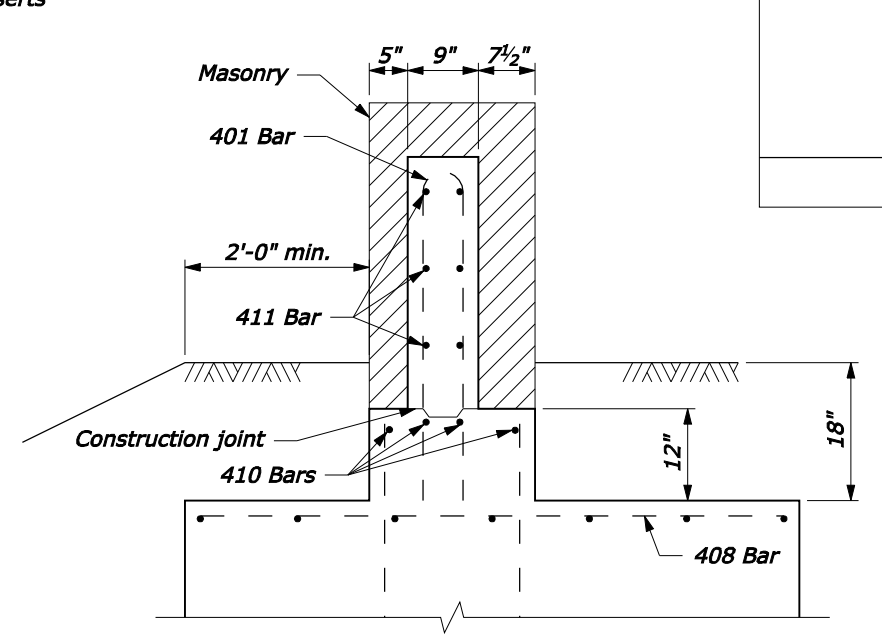
ELEVATION



DETAIL C



SECTION D-D
PARAPET END BLOCK



SECTION C-C

NO SCALE

U.S. DEPARTMENT OF TRANSPORTATION
FEDERAL HIGHWAY ADMINISTRATION
FEDERAL LANDS HIGHWAY

U.S. CUSTOMARY STANDARD
**STEEL-BACKED TIMBER GUARDRAIL
TL-2 CONNECTION TO
STONE MASONRY GUARDWALL**
Sheet 3 of 3

STANDARD APPROVED FOR USE --/----	STANDARD
REVISED:	617-64
DRAFT: 1/2008	

23-Jan-2008 11:37 AM
 P:\198.145.186.2\std_plan\std61764.dgn [US Customary]