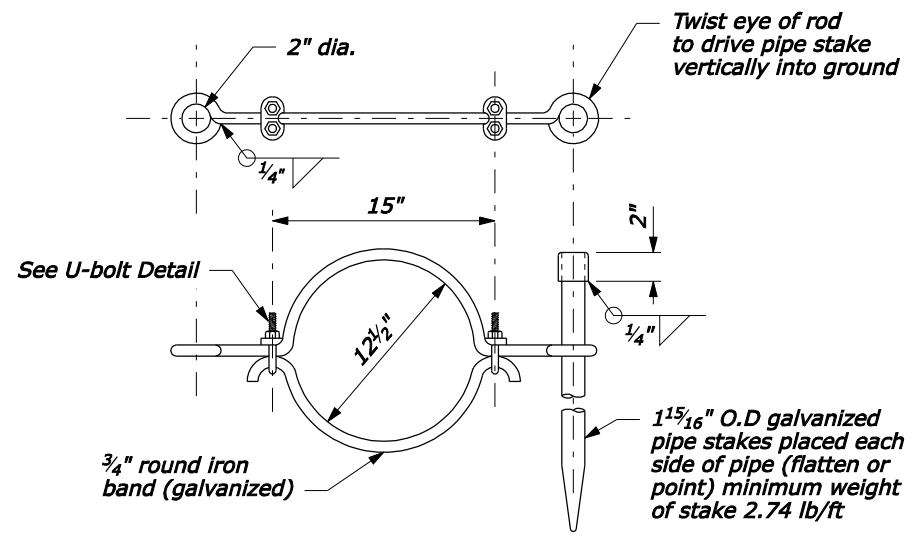
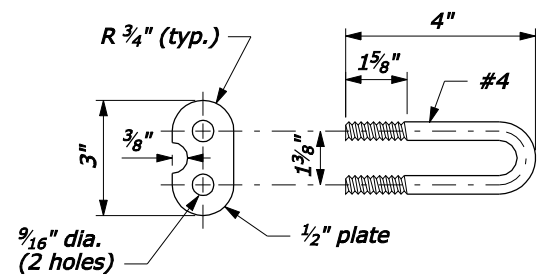


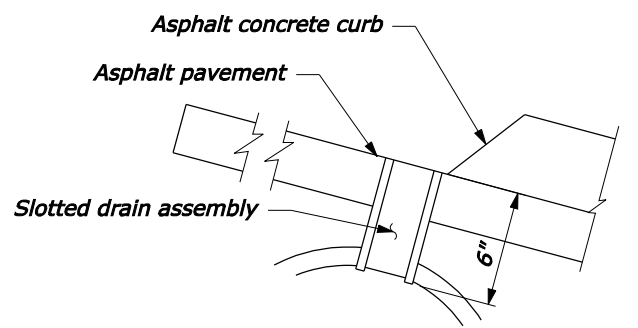
ALTERNATE 1



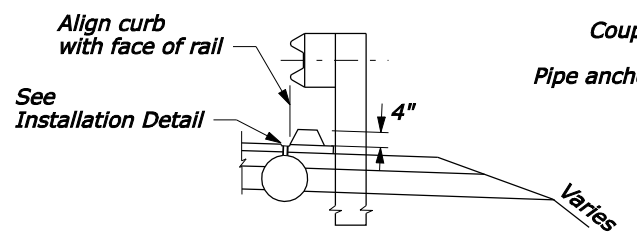
ALTERNATE 2



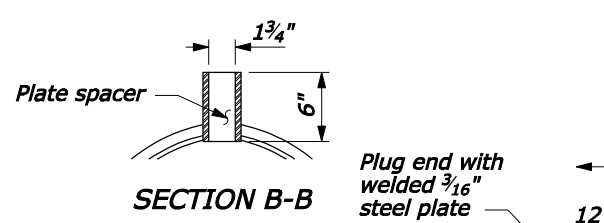
U-BOLT DETAIL



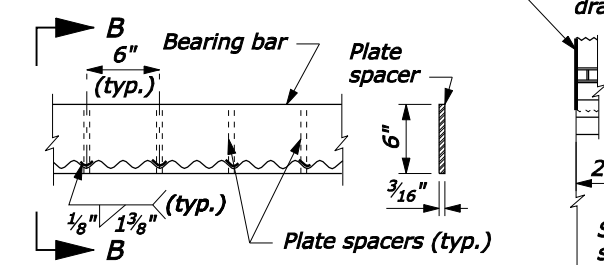
INSTALLATION DETAIL



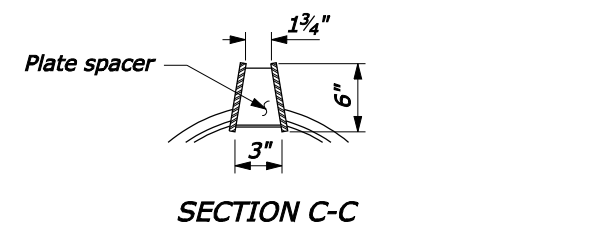
TYPICAL PLACEMENT AT GUARDRAIL



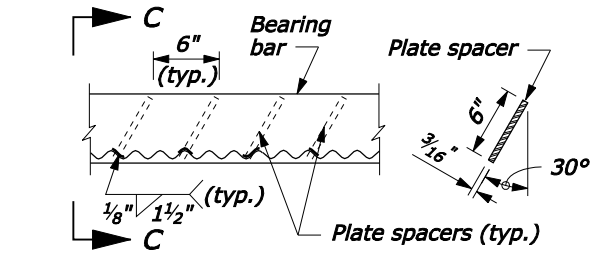
SECTION B-B



SECTION C-C



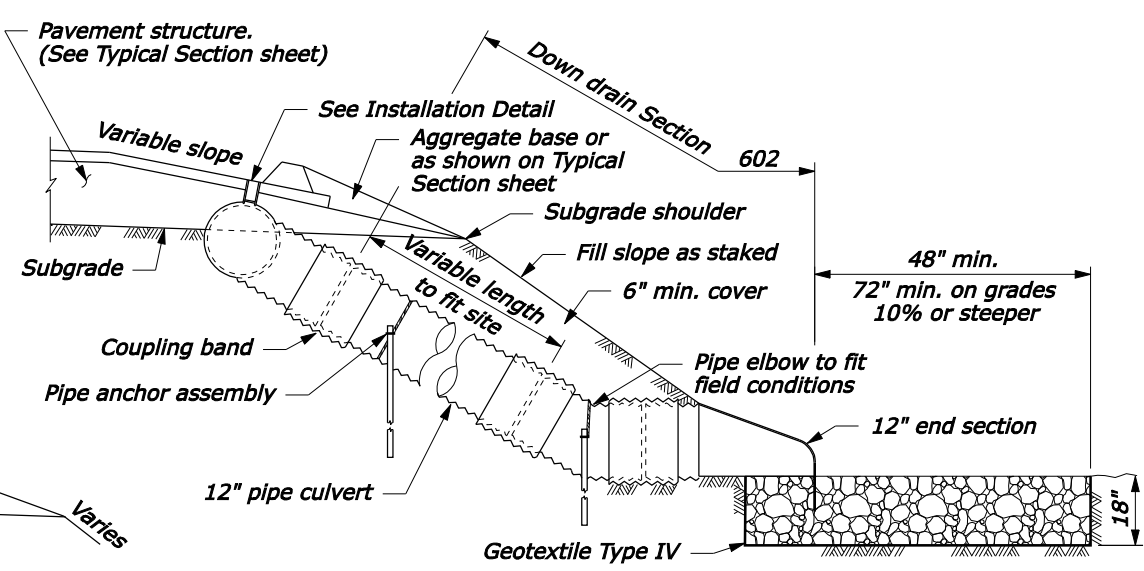
SECTION C-C



SECTION C-C

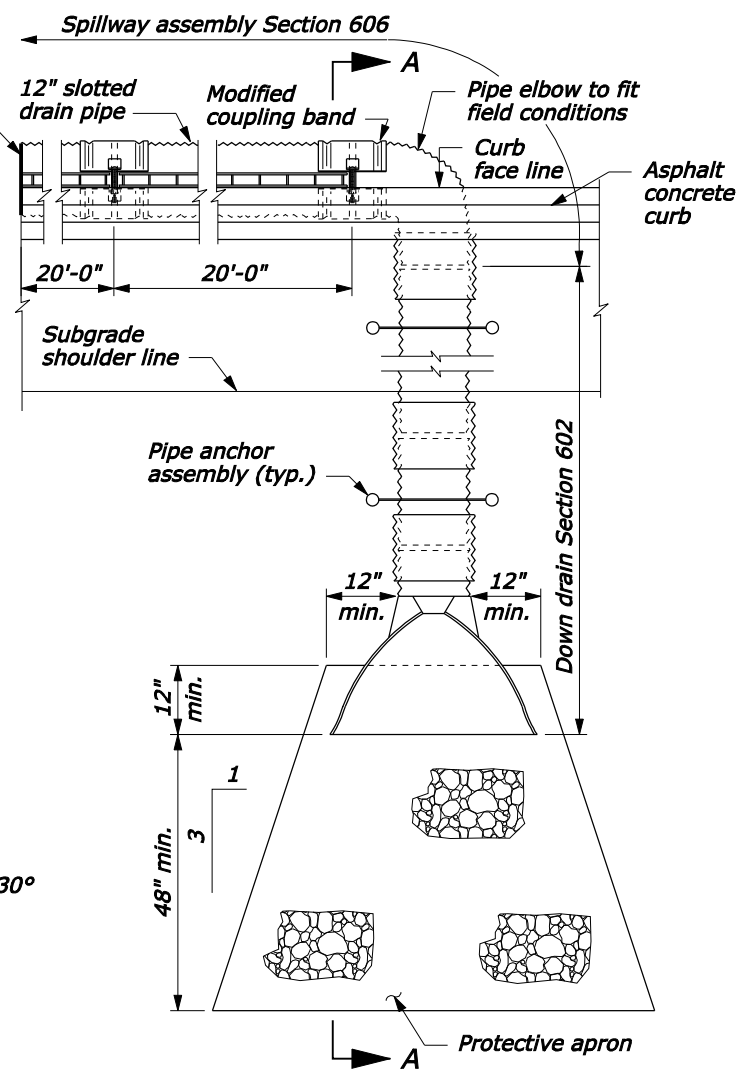
ANGLE SLOT

SLOTTED DRAIN ASSEMBLY



SECTION A-A

NO SCALE

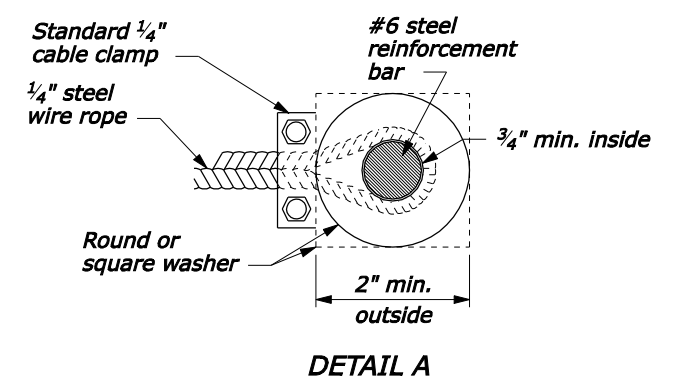


Down drain Section 602

Spillway assembly Section 606

NOTE:

1. Fabricate slotted drain pipe, down drain pipe culvert, elbows, end section, and coupling bands from sheets 1/16" thickness.
2. Grate slot assembly and plate end plug conform to AASHTO M 183.
3. Galvanize grate slot assembly, plate end plug, and all hardware according to AASHTO M 111.
4. Approved alternate pipe anchor assemblies may be used.
5. Place Class 2 riprap conforming to Section 251 for protective apron.
6. Place pipe anchor assemblies approximately 20 foot intervals along down drain pipe culvert. Place a minimum of 2 anchors per down drain.
7. For installations at sag vertical curves, use a tee connection instead of an elbow and a minimum of two 20 meter slotted drain pipe sections.
8. Make all band connections watertight by placing gaskets or O-rings under the bands before tightening in accordance with Subsection 712.03.
9. Use either the grate slot or the angle slot slotted drain assembly.



DETAIL A

U.S. DEPARTMENT OF TRANSPORTATION FEDERAL HIGHWAY ADMINISTRATION FEDERAL LANDS HIGHWAY	
U.S. CUSTOMARY STANDARD	
SLOTTED DRAIN SPILLWAY ASSEMBLY	
STANDARD APPROVED FOR USE 6/2005	STANDARD
REVISED:	606-1

01-Nov-2007 04:11 PM
 P:\198.145.186.2\std.pln\std6061.dgn [US Customary]