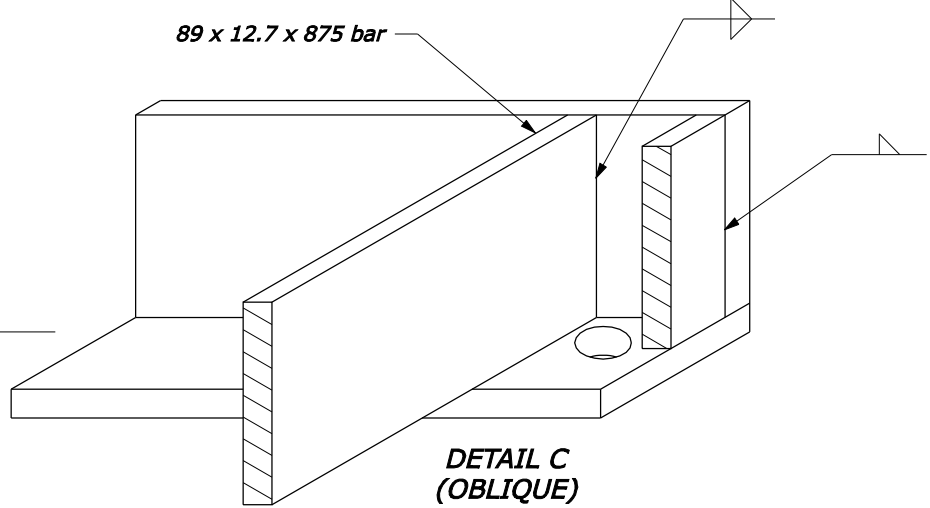
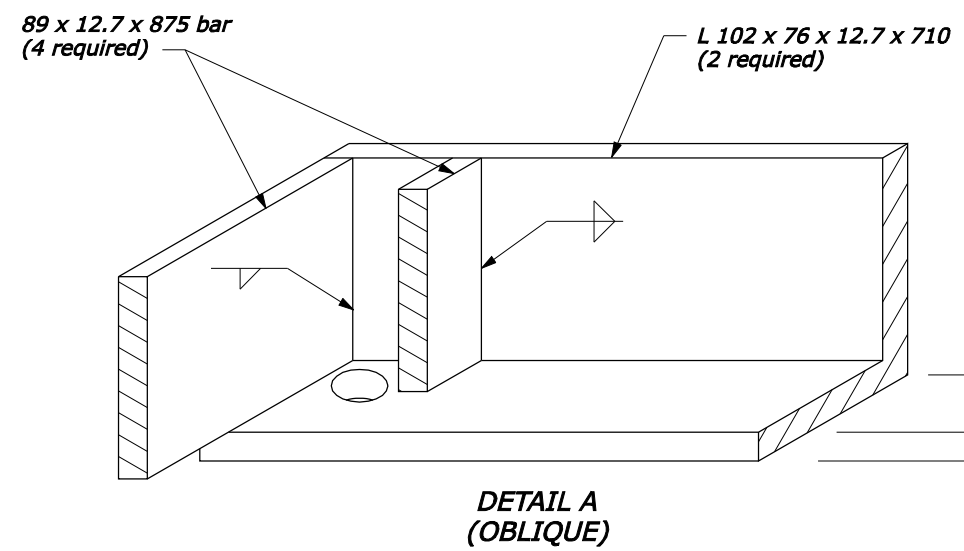
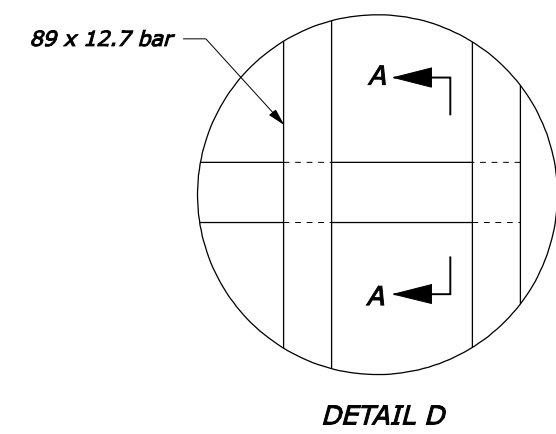
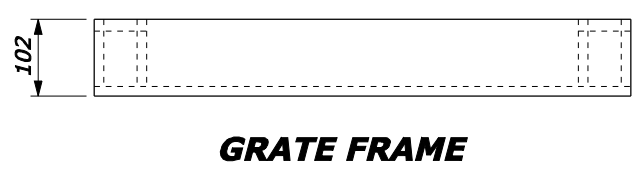
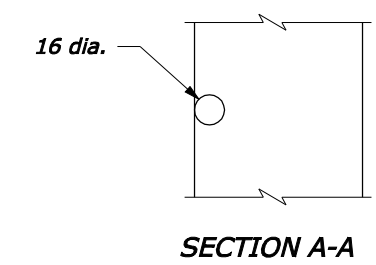


- NOTE:**
- Hot dip galvanize all metal parts for frame and grate after fabrication.
 - Fabricate frame and grate from structural steel.
 - Furnish M20 x 120 x 200 mm anchor bolts with nuts to attach frame to inlet.
 - Cut holes in 89 x 12.7 mm bar as required to place 16 mm diameter rods.
 - Spot weld 16 mm diameter rods for frame and grate to 89 x 12.7 mm bars.
 - Furnish hardware in the metric sizes shown. Equivalent US Customary sizes may be used when metric sizes are not available.
 - Dimensions without units are millimeters.



U.S. DEPARTMENT OF TRANSPORTATION FEDERAL HIGHWAY ADMINISTRATION FEDERAL LANDS HIGHWAY	
METRIC STANDARD	
FRAME AND GRATE TYPE 5A	
STANDARD APPROVED FOR USE 3/1996	STANDARD
REVISED: 6/2005	M604-6

NO SCALE