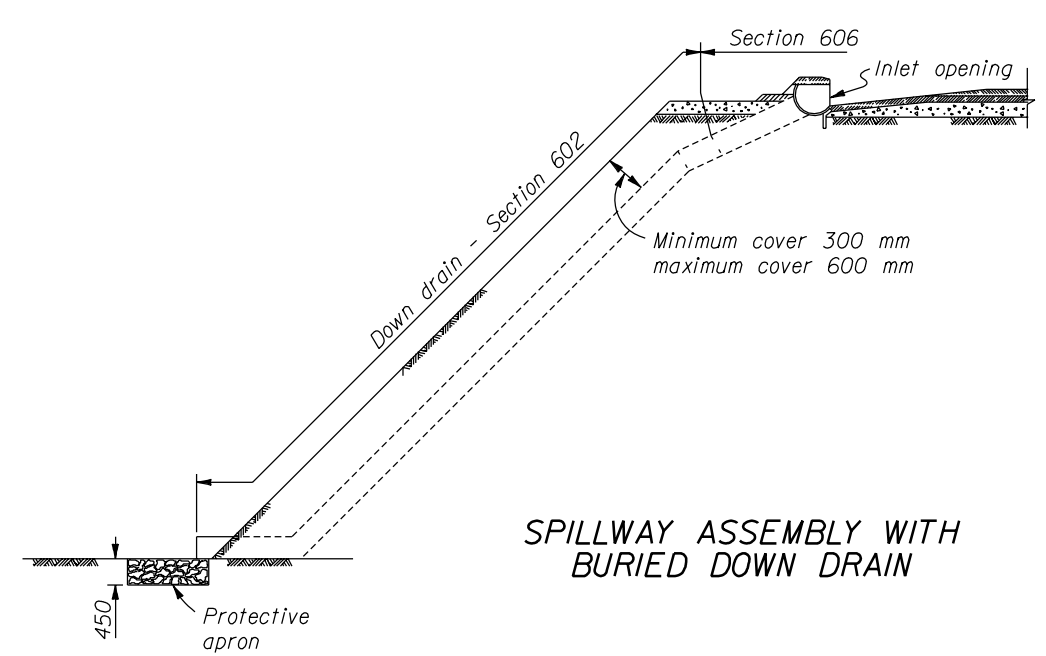
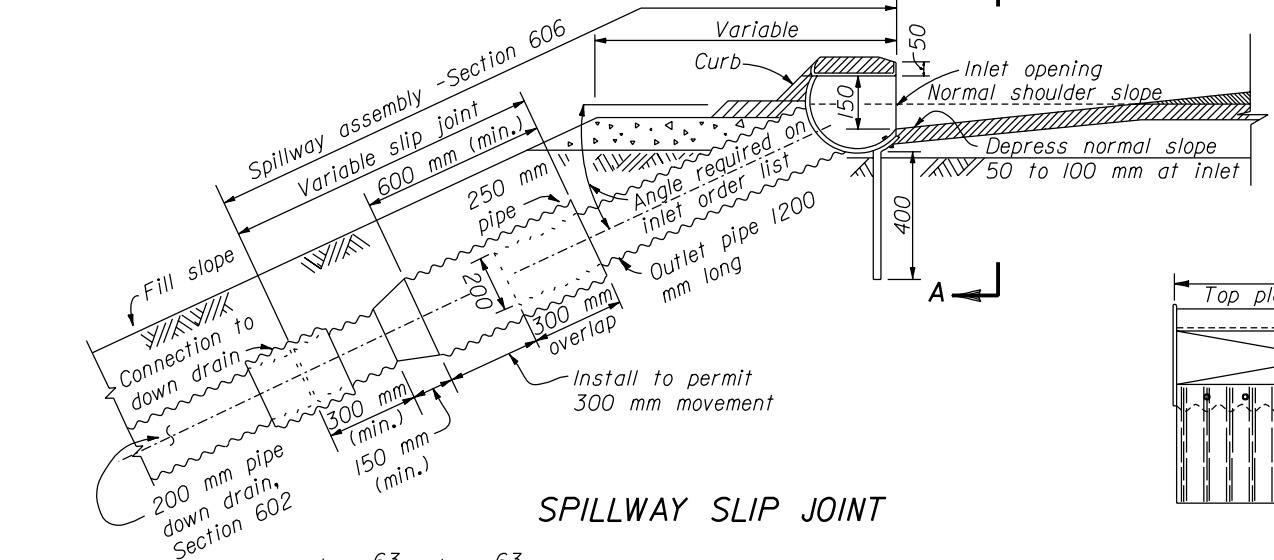


**SPILLWAY ASSEMBLY WITH SURFACE DOWN DRAIN**

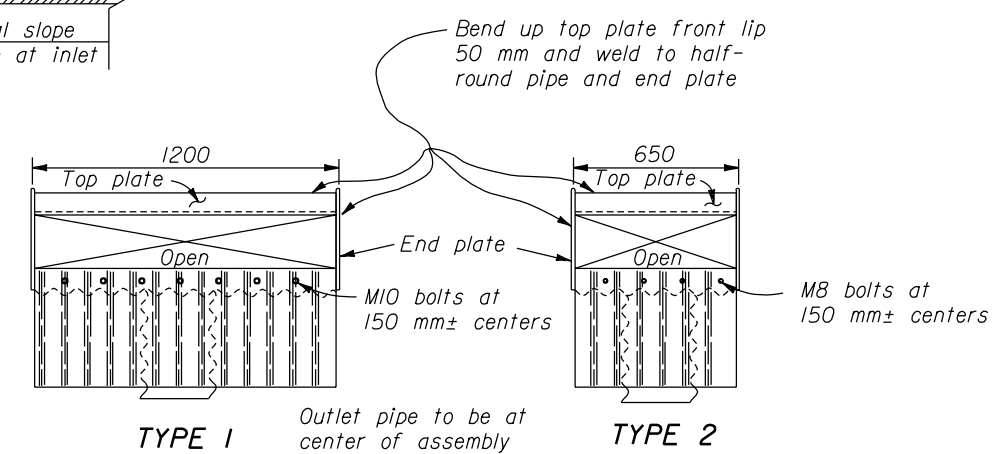


**SPILLWAY ASSEMBLY WITH BURIED DOWN DRAIN**

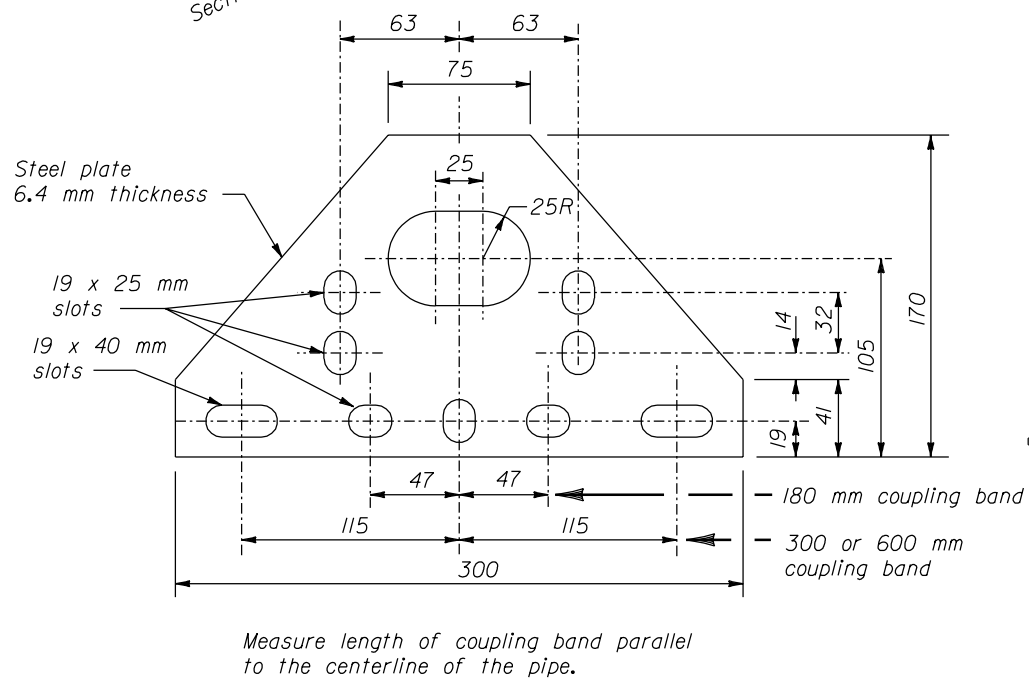
- NOTE:**
- Dimensions not labeled are in millimeters.
  - Fabricate half-round pipe, outlet pipe, and curtain wall for spillway assembly from 1.6 mm galvanized steel or 1.5 mm aluminum. Fabricate top plate and end plate from 4.6 mm flat steel or 5.0 mm aluminum plate. Fabricate tapered portion of slip joint from either flat or corrugated sheets.
  - Make all coupling band connections watertight by placing a 5 mm bead of approved caulking under each half of the band before tightening.
  - Install pipe anchor assemblies at 3000 mm± spacing on down drain installed above ground.
  - Use Type 2 spillway assembly inlets where profile grades are greater than 2 percent. Use Type 1 on grades 2 percent or flatter.
  - Place class 2 riprap conforming to Section 251 for protective apron.
  - Galvanized items of the anchor assembly after fabrication.
  - Furnish hardware in the metric sizes shown. Equivalent imperial sizes may be used when metric sizes are not available.
  - Approved alternate designs may be used.



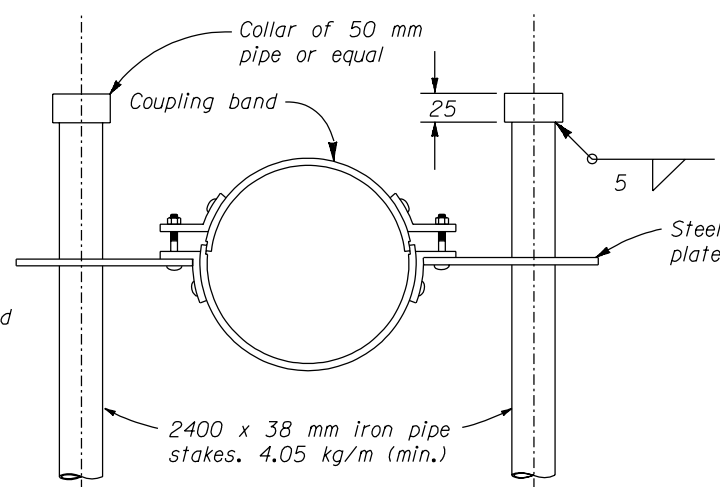
**SPILLWAY SLIP JOINT**



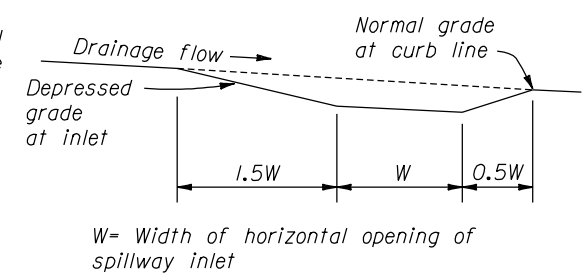
**SECTION A-A  
SPILLWAY ASSEMBLY INLETS**



**STEEL PLATE**

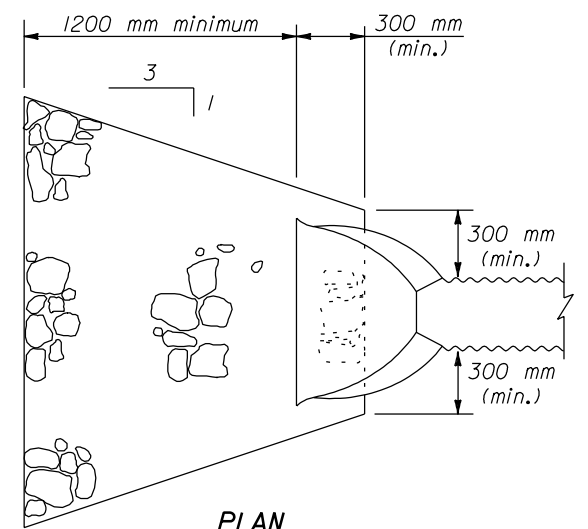


**ANCHOR ASSEMBLY**



**SCHEMATIC PROFILE OF INLET BASIN**

NO SCALE



**PLAN PROTECTIVE APRON**

U.S. DEPARTMENT OF TRANSPORTATION  
FEDERAL HIGHWAY ADMINISTRATION  
WESTERN FEDERAL LANDS HIGHWAY DIVISION

**METRIC DETAIL**

**CORRUGATED METAL SPILLWAYS AND INLETS**

DETAIL APPROVED FOR USE 3/1996

REVISIONS:

DETAIL WM606-53

13 DEC 2000 f:\standrow\metric\details\wm60653.dgn