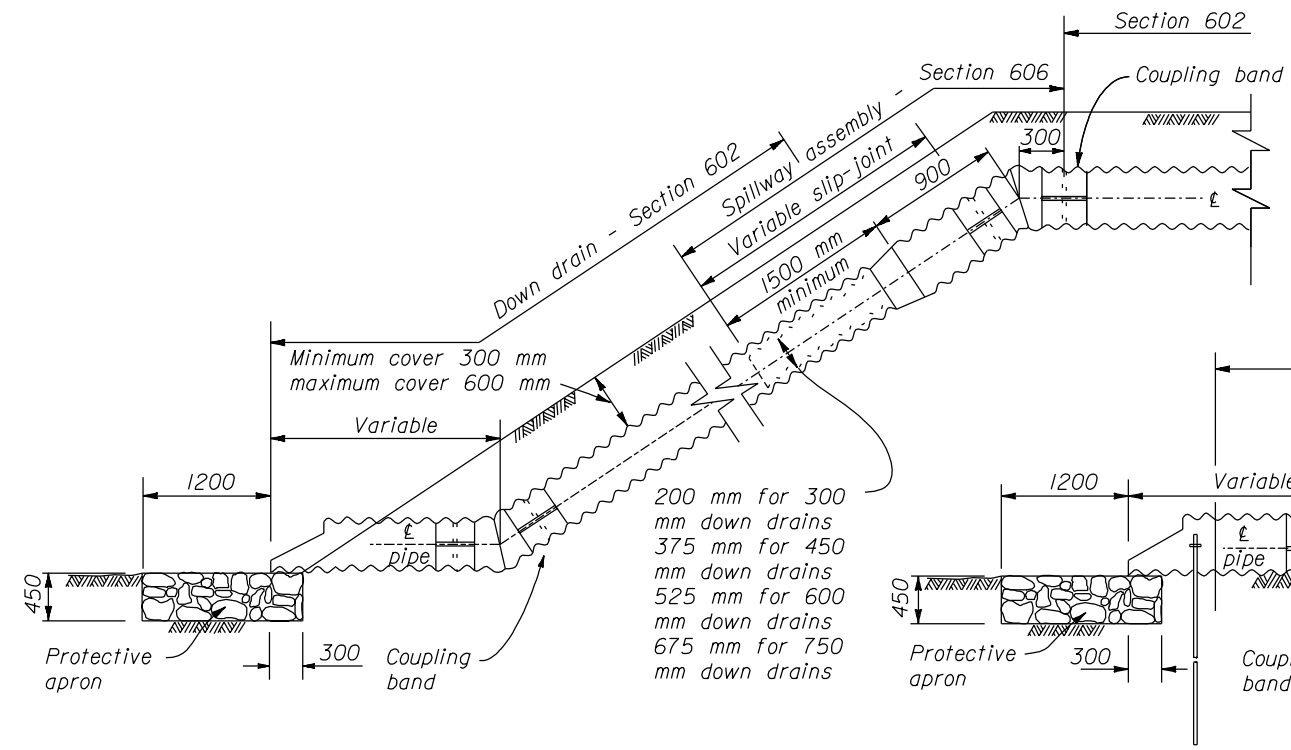


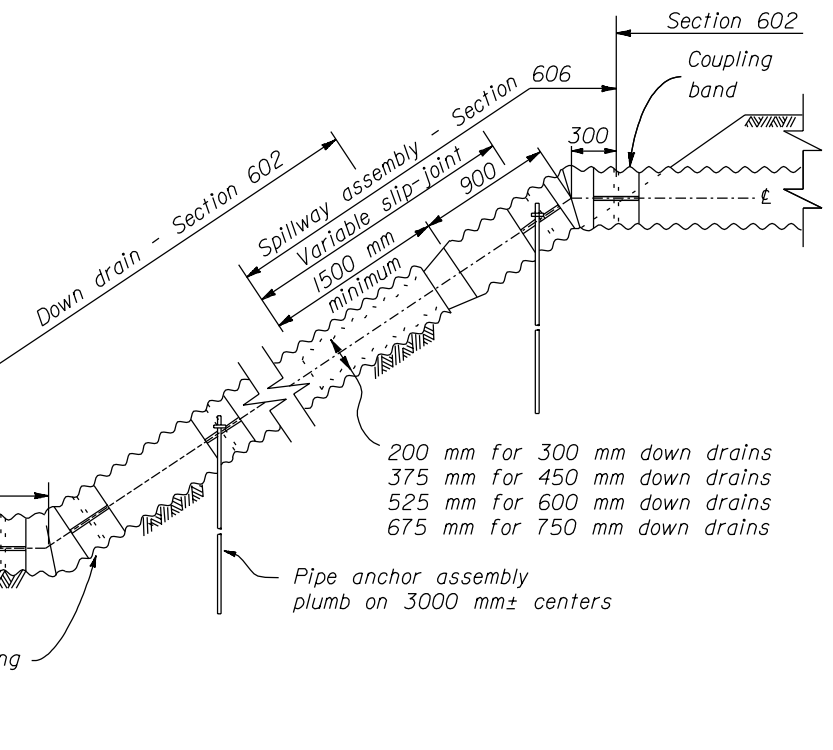
**NOTE:**

1. Dimensions not labeled are in millimeters.
2. Fabricate spillway assembly from annular corrugated pipe, or from helically corrugated pipe with factory annular or reformed ends. Use 1.6 mm galvanized steel or 1.5 mm aluminum.
3. Make all coupling band connections water tight by placing 5 mm bead of approved caulking under each half of the band before tightening.
4. Place Class 2 riprap conforming to Section 251 for protective apron.
5. Galvanize all items of anchor assembly after fabrication.
6. Furnish hardware in the metric sizes shown. Equivalent imperial sizes may be used when metric sizes all not available.
7. Approved alternate designs may be used.



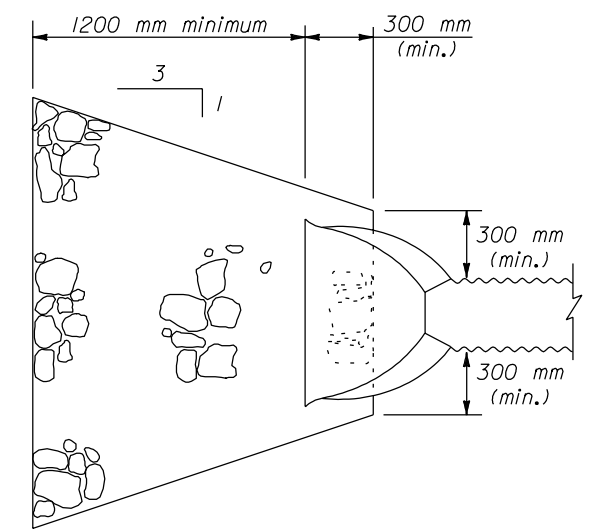
ELEVATION

SPILLWAY ASSEMBLY WITH BURIED DOWN DRAIN

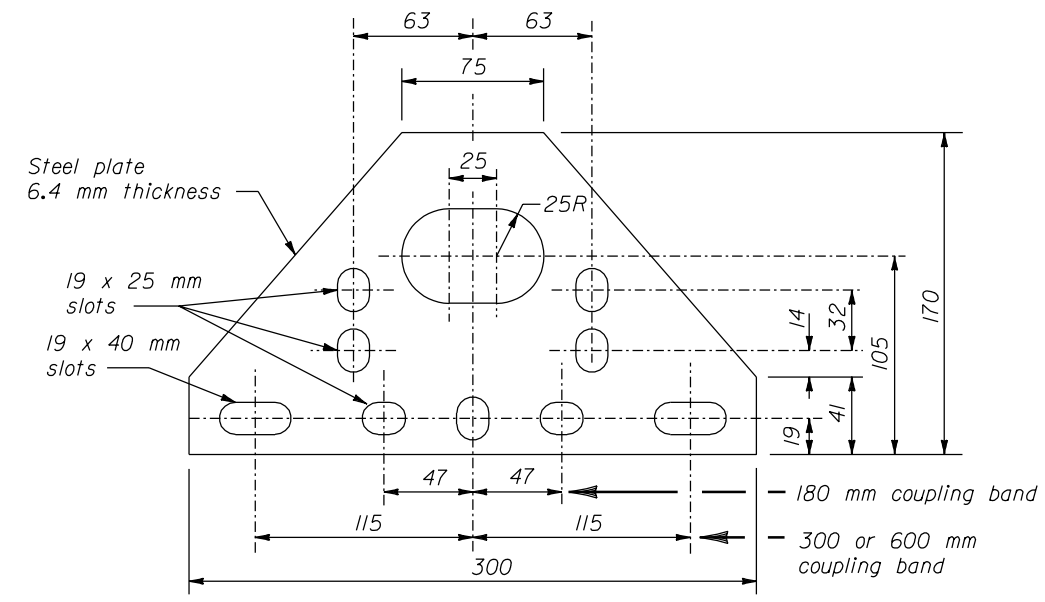


ELEVATION

SPILLWAY ASSEMBLY WITH SURFACE DOWN DRAIN

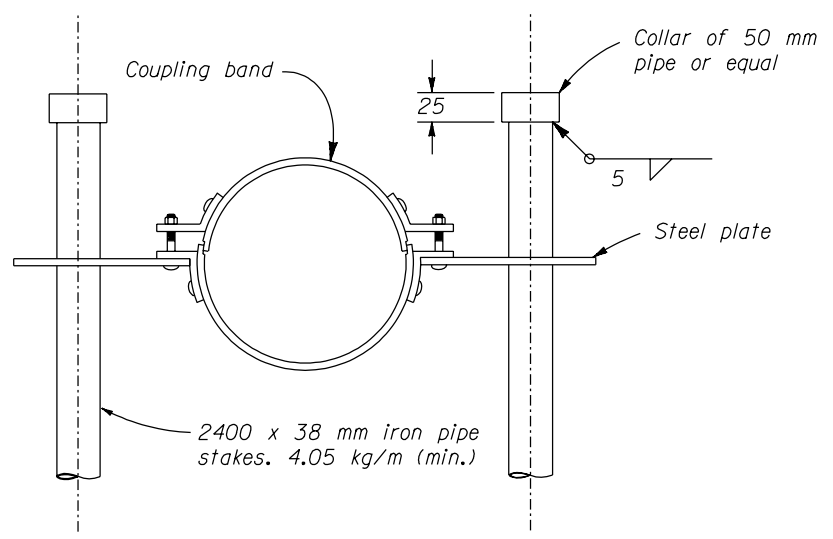


PLAN  
PROTECTIVE APRON



Measure length of coupling band parallel to the centerline of the pipe.

STEEL PLATE



ANCHOR ASSEMBLY

U.S. DEPARTMENT OF TRANSPORTATION FEDERAL HIGHWAY ADMINISTRATION WESTERN FEDERAL LANDS HIGHWAY DIVISION	
METRIC DETAIL	
SPILLWAY ASSEMBLY WITH DOWN DRAIN AND SLIP-JOINT	
DETAIL APPROVED FOR USE 3/1996	DETAIL
REVISED:	WM606-51

NO SCALE

13 DEC 2000 f:\standrow\metric\details\wm60651.dgn