

ELEVATION

SPILLWAY ASSEMBLY WITH DOWN DRAIN OUTLET ON NON-ERODIBLE MATERIAL

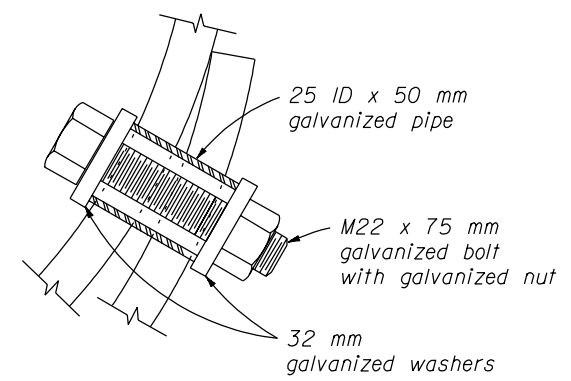
ELEVATION

SPILLWAY ASSEMBLY WITH DOWN DRAIN OUTLET ON ERODIBLE MATERIAL

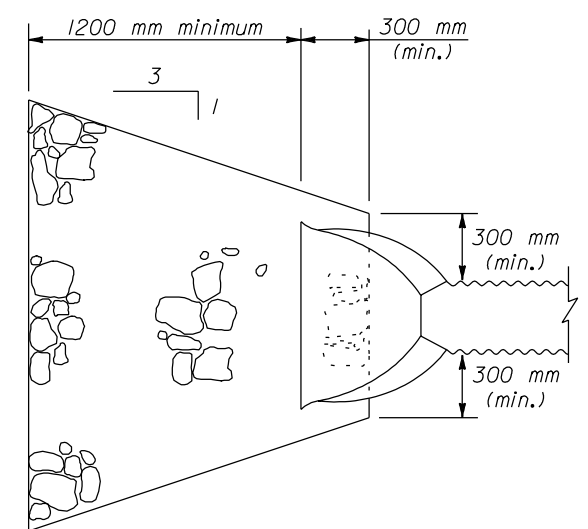
SPILLWAY ASSEMBLY

NOTE:

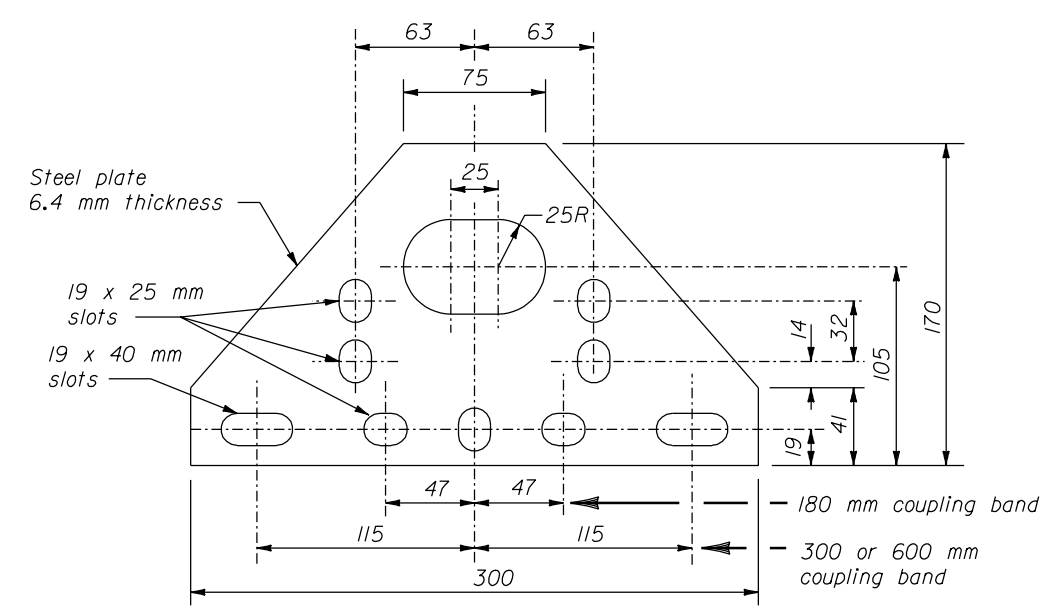
1. Dimensions not labeled are in millimeters.
2. Fabricate spillway assembly from annular corrugated pipe, or from helically corrugated pipe with factory annular or reformed ends. Use 1.6 mm galvanized steel or 1.5 mm aluminum.
3. Make all banded connections watertight by placing 5 mm bead of approved caulking under each half of the band before tightening.
4. Payment for Tee Branch connection under Section 602 is included in the linear foot measurement for culvert pipe for the applicable sizes. Measure Tee Branch connections along the top of the Tee.
5. Place Class 2 riprap conforming to Section 251 for protective apron.
6. Galvanized all items of anchor assembly after fabrication.
7. Furnish hardware in the metric sizes shown. Equivalent imperial sizes may be used when metric sizes are not available.
8. Approved alternate designs may be used.



BOLT DETAIL

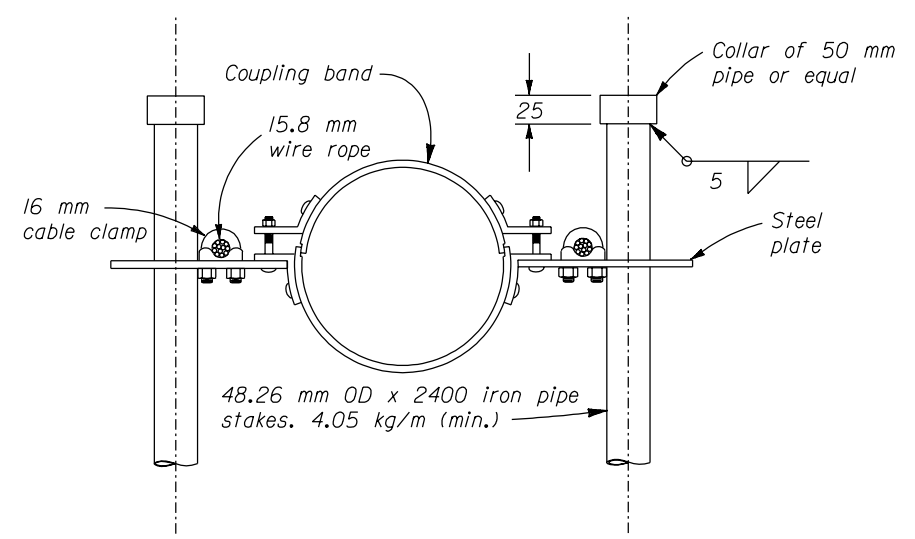


PLAN
PROTECTIVE APRON



STEEL PLATE

Measure length of coupling band parallel to the centerline of the pipe.



ANCHOR ASSEMBLY

NO SCALE

U.S. DEPARTMENT OF TRANSPORTATION FEDERAL HIGHWAY ADMINISTRATION WESTERN FEDERAL LANDS HIGHWAY DIVISION	
METRIC DETAIL	
SPILLWAY ASSEMBLY WITH DOWN DRAIN	
DETAIL APPROVED FOR USE 3/1996	DETAIL
REVISED:	WM606-50

13 DEC 2000 f:\standrow\metric\details\wm60650.dgn