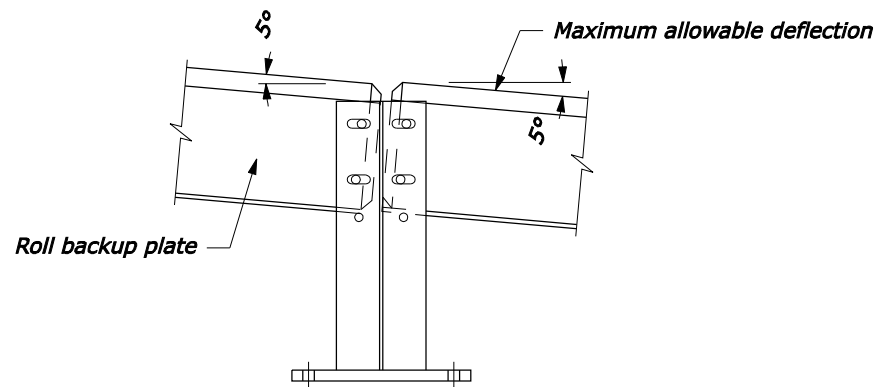
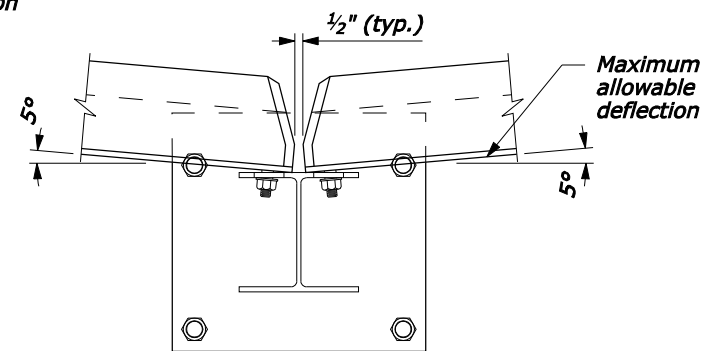


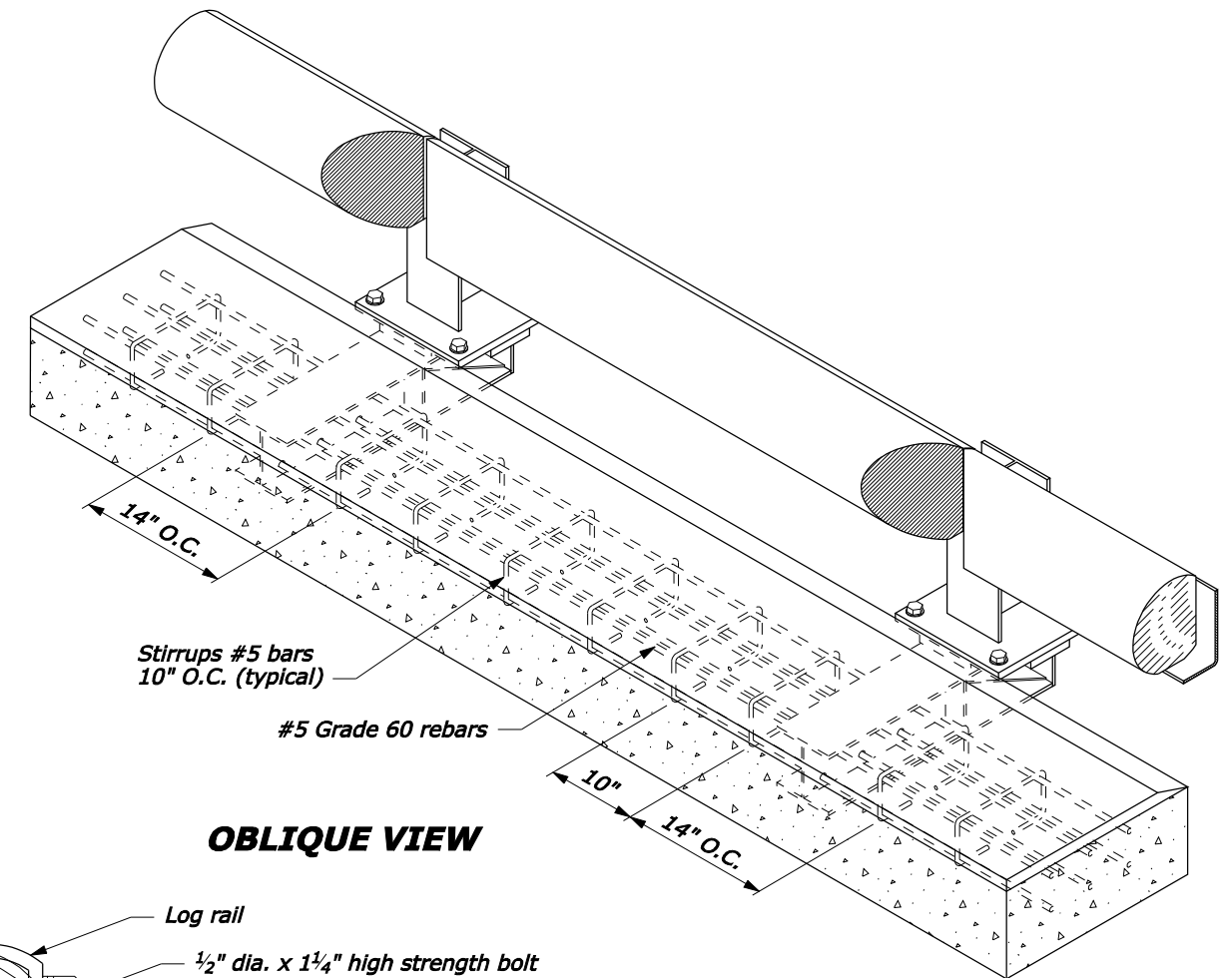
NOTE:
 1. Steel is ASTM A242, Grade 50.
 2. Concrete: minimum $f_c' = 3500$ psi.



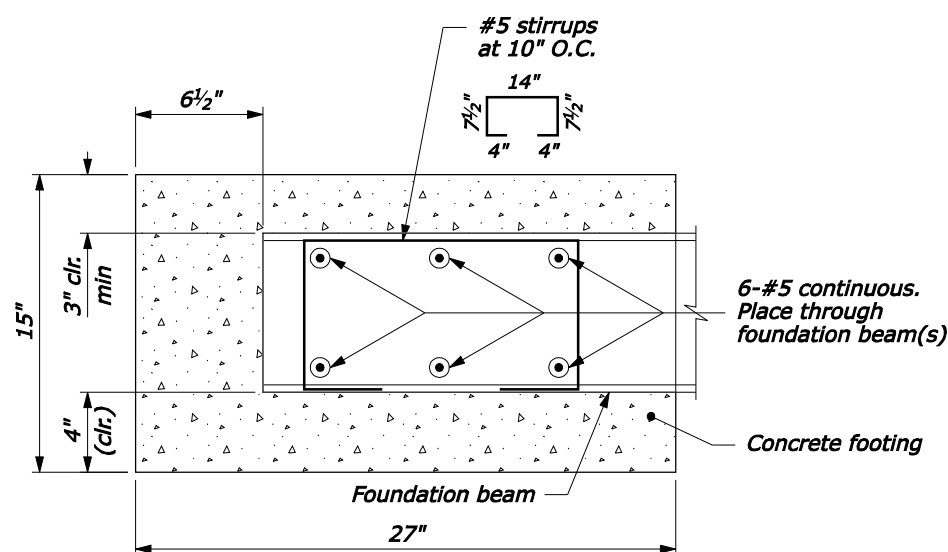
**ENDS OF RAILS AT POST:
 MAXIMUM VERTICAL
 DEFLECTION ALLOWABLE
 ELEVATION**



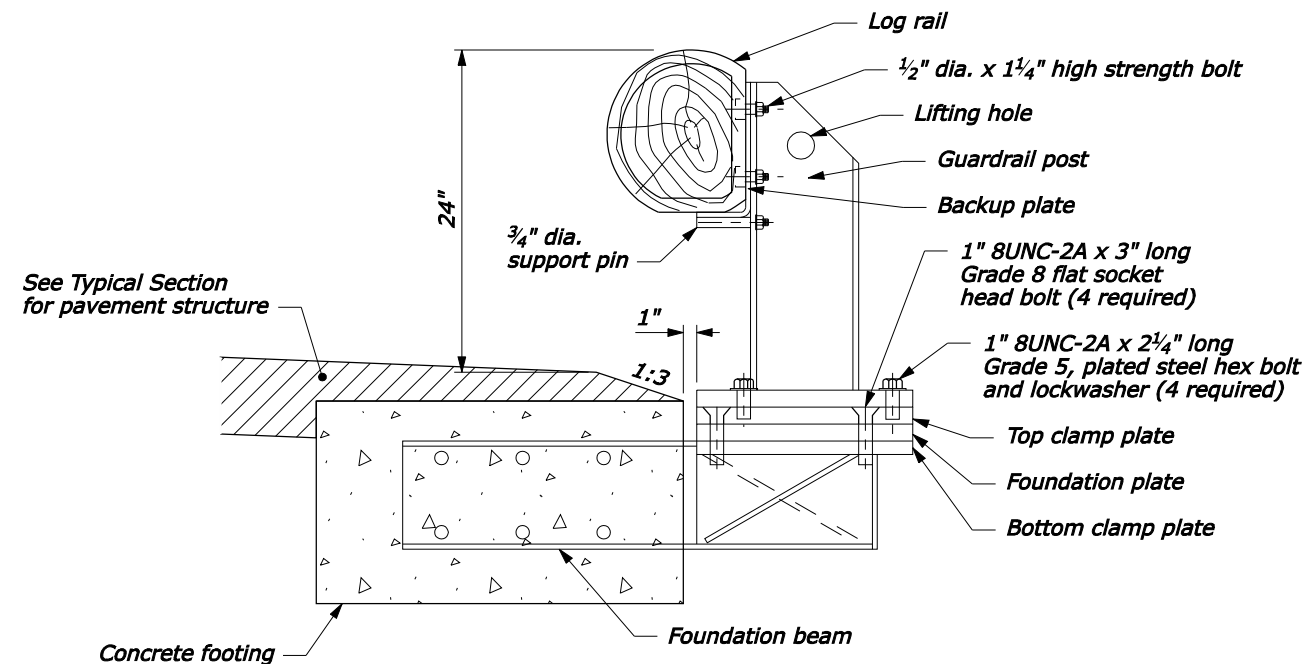
**MAXIMUM HORIZONTAL
 DEFLECTION ALLOWABLE
 PLAN VIEW**



OBLIQUE VIEW



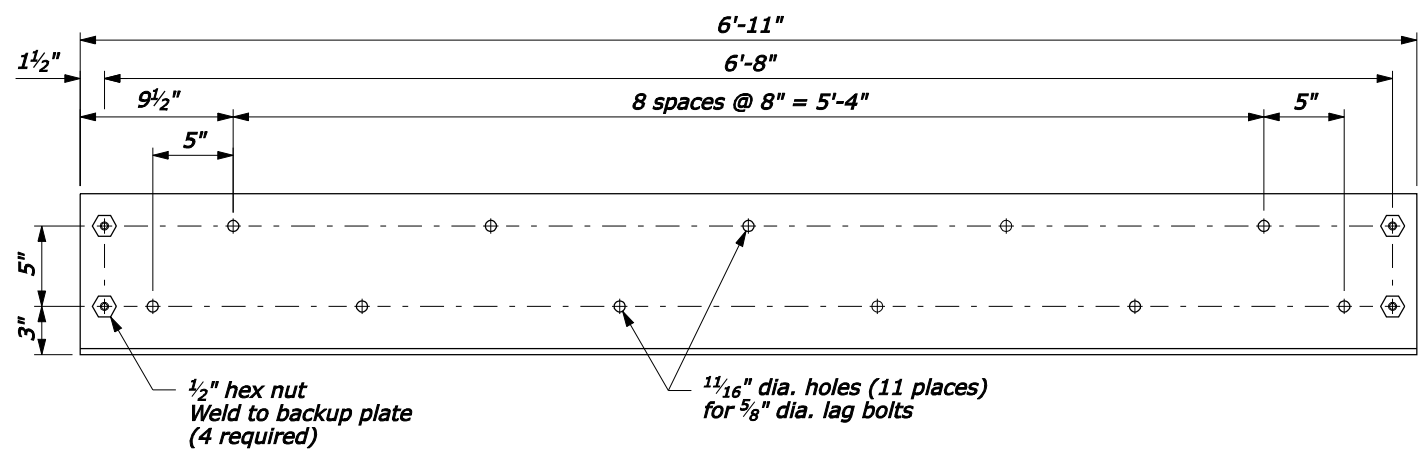
**FOOTING DETAIL
 TYPICAL SECTION**



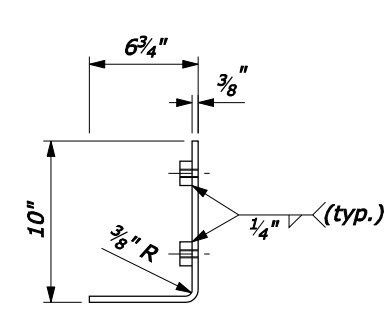
TYPICAL SECTION

NO SCALE

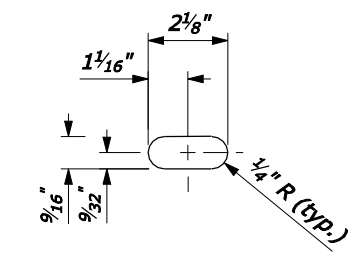
U.S. DEPARTMENT OF TRANSPORTATION FEDERAL HIGHWAY ADMINISTRATION WESTERN FEDERAL LANDS HIGHWAY DIVISION	
U.S. CUSTOMARY DETAIL REMOVABLE STEEL-BACKED LOG RAIL Sheet 1 of 3	
DETAIL APPROVED FOR USE --/---	DETAIL 617-83
REVISED: DRAFT: 3/2008	



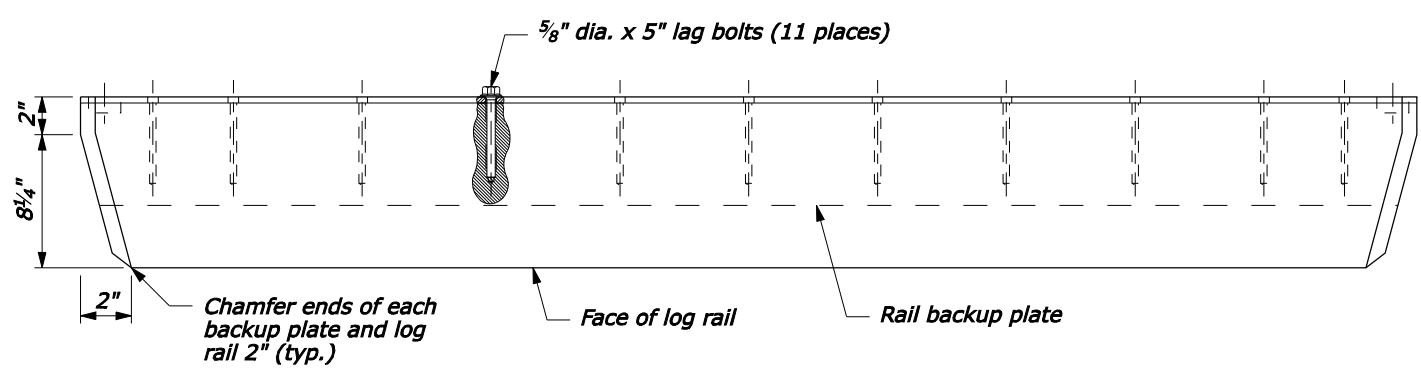
**RAIL BACKUP PLATE
ELEVATION VIEW**



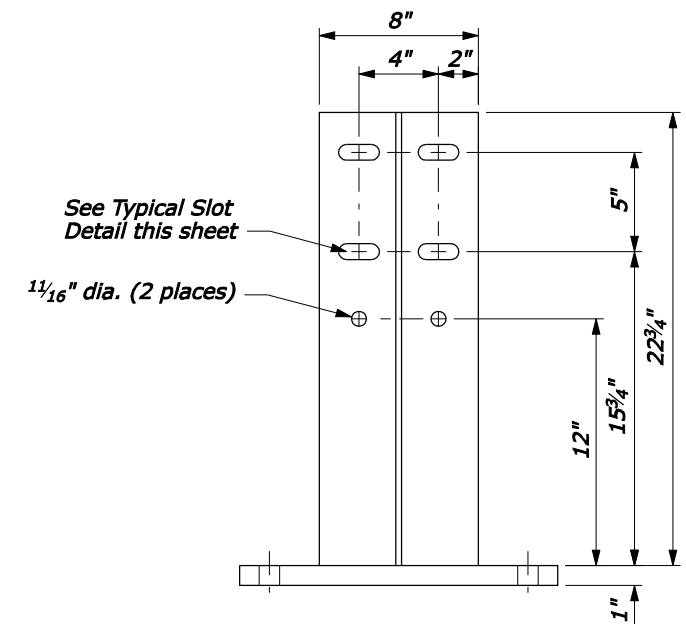
**RAIL BACKUP PLATE
SECTION VIEW**



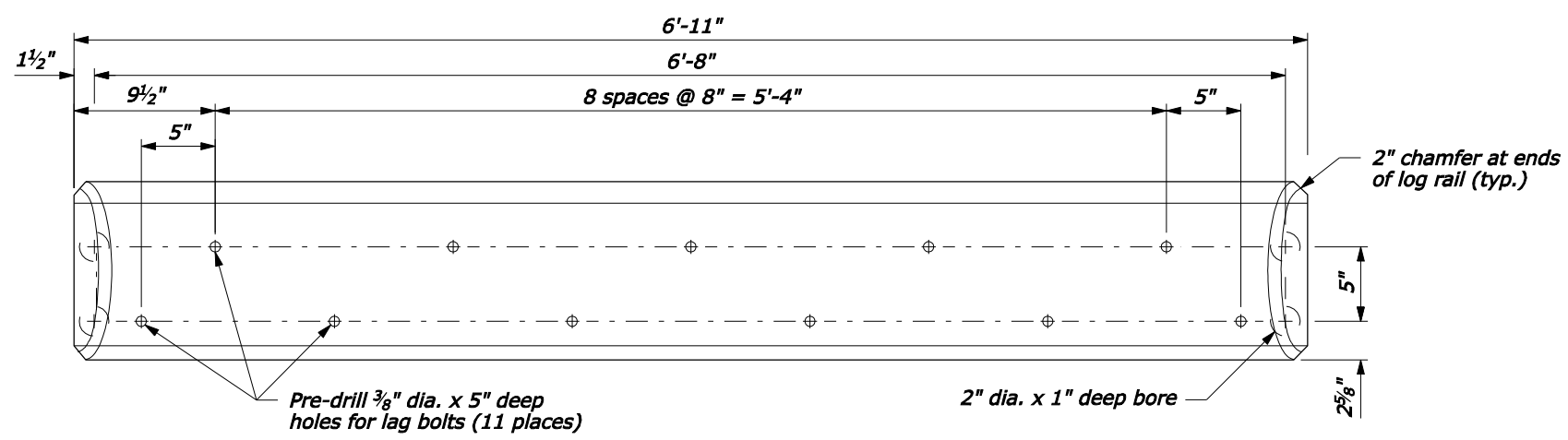
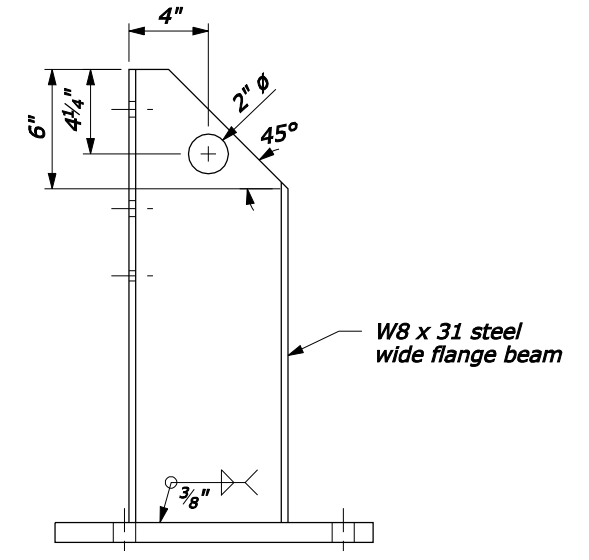
TYPICAL SLOT DETAIL



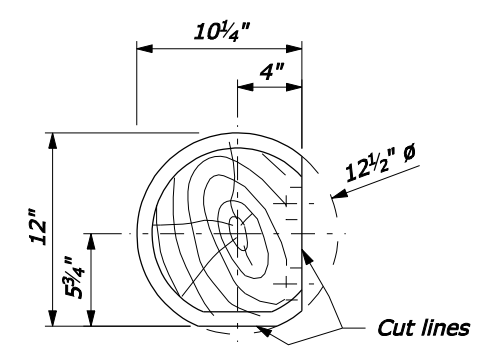
**LOG RAIL & RAIL BACKUP PLATE
PLAN VIEW**



GUARDRAIL POST



**LOG RAIL
ELEVATION VIEW**



**LOG RAIL
SECTION VIEW**

NO SCALE

U.S. DEPARTMENT OF TRANSPORTATION
FEDERAL HIGHWAY ADMINISTRATION
WESTERN FEDERAL LANDS HIGHWAY DIVISION

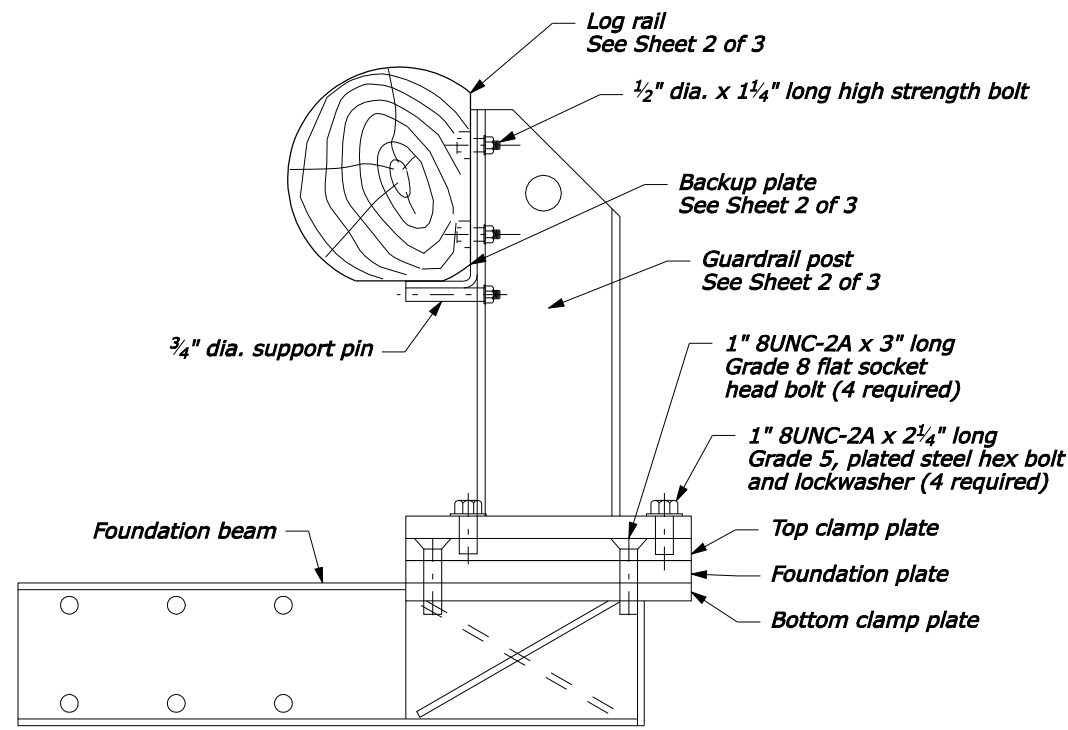
U.S. CUSTOMARY DETAIL

**REMOVABLE
STEEL-BACKED LOG RAIL**

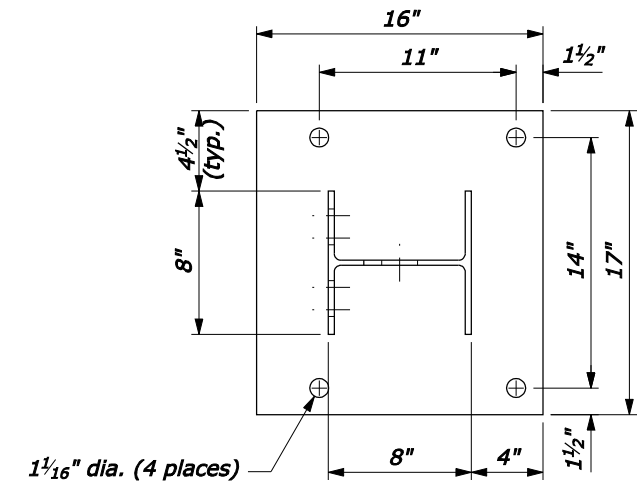
Sheet 2 of 3

DETAIL APPROVED FOR USE	DETAIL
REVISED:	617-83
DRAFT: 3/2008	

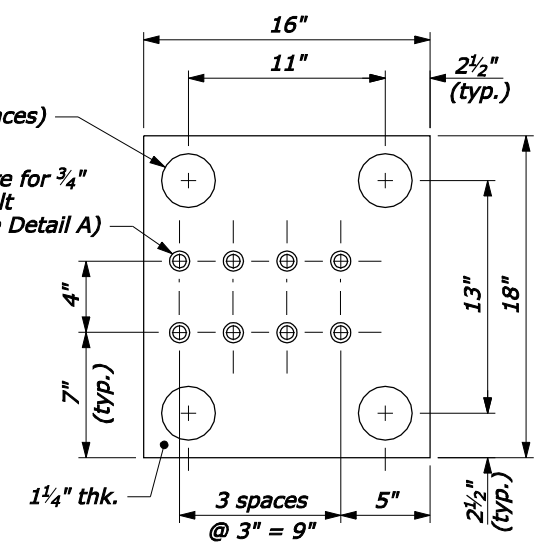
18-Mar-2008 12:38 PM P:\198.145.186.2\std.pln\w61783.dgn [US Customary]



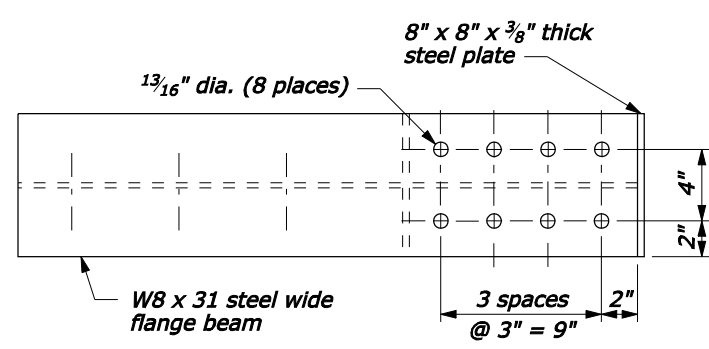
TYPICAL SECTION



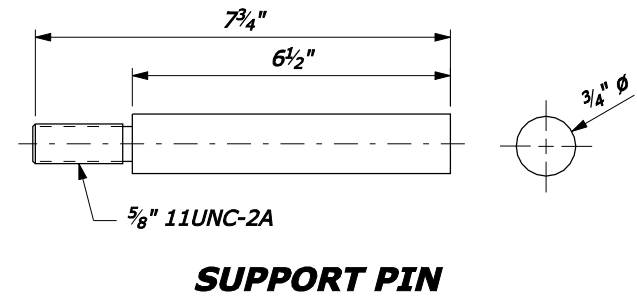
RAIL POST BASE PLATE



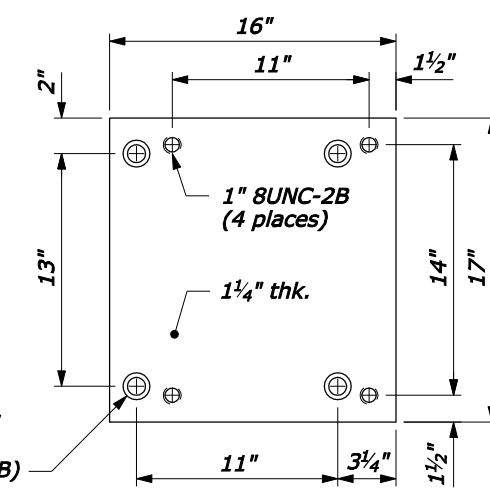
FOUNDATION PLATE



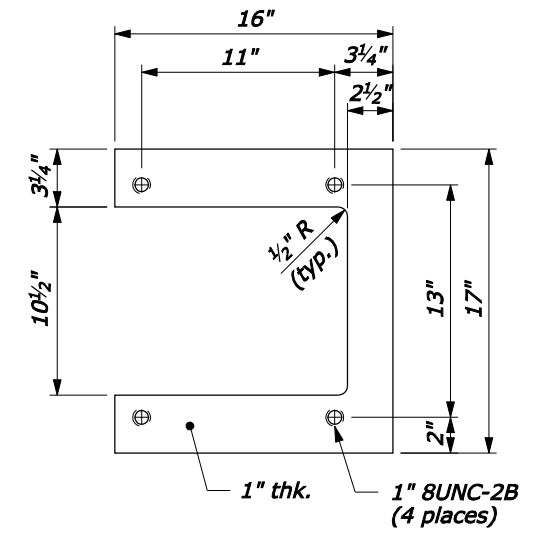
FOUNDATION BEAM



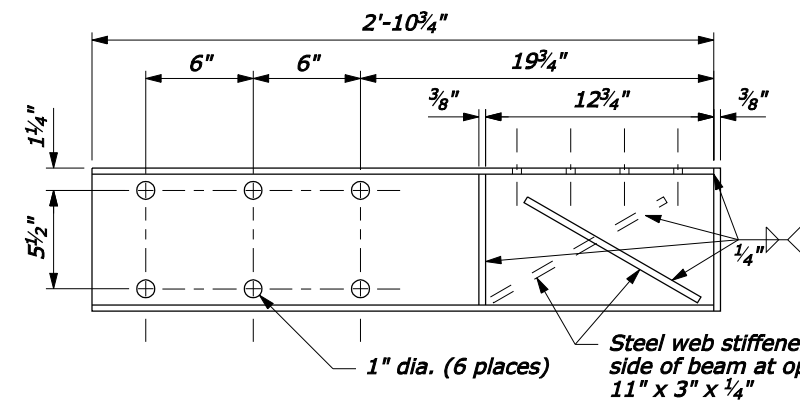
SUPPORT PIN



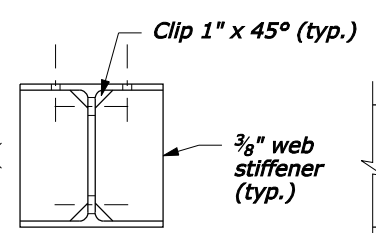
TOP CLAMP PLATE



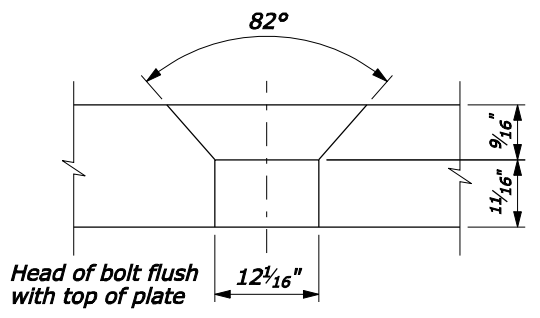
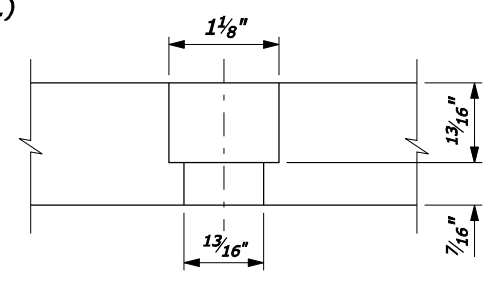
BOTTOM CLAMP PLATE



FOUNDATION BEAM



DETAIL A



DETAIL B

NO SCALE

U.S. DEPARTMENT OF TRANSPORTATION
 FEDERAL HIGHWAY ADMINISTRATION
 WESTERN FEDERAL LANDS HIGHWAY DIVISION

U.S. CUSTOMARY DETAIL

**REMOVABLE
 STEEL-BACKED LOG RAIL**

Sheet 3 of 3

DETAIL APPROVED FOR USE -/---

REVISD: 3/2008

DETAIL 617-83

18-Mar-2008 12:39 PM P:\198.145.186.2\std.pln\w61783.dgn [US Customary]