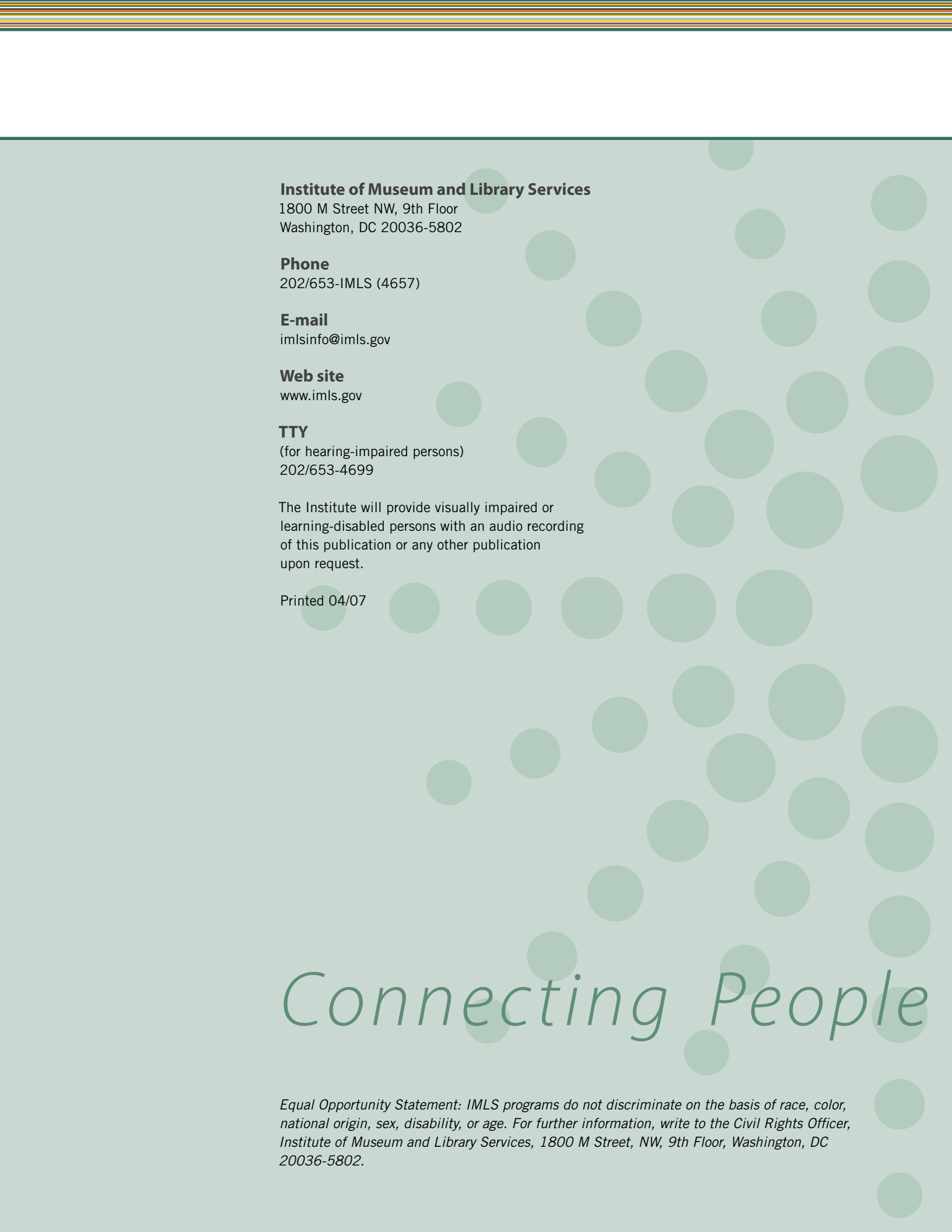


2008



INSTITUTE *of*
Museum and Library
SERVICES

Grant and Award Opportunities



Institute of Museum and Library Services

1800 M Street NW, 9th Floor
Washington, DC 20036-5802

Phone

202/653-IMLS (4657)

E-mail

imlsinfo@imls.gov

Web site

www.imls.gov

TTY

(for hearing-impaired persons)
202/653-4699

The Institute will provide visually impaired or learning-disabled persons with an audio recording of this publication or any other publication upon request.

Printed 04/07

Connecting People

Equal Opportunity Statement: IMLS programs do not discriminate on the basis of race, color, national origin, sex, disability, or age. For further information, write to the Civil Rights Officer, Institute of Museum and Library Services, 1800 M Street, NW, 9th Floor, Washington, DC 20036-5802.

DEAR COLLEAGUES

I am pleased to present the Institute of Museum and Library Services' Grant and Award Opportunities Guide for the fiscal year beginning October 1, 2007. In keeping with our mission of working with museums and libraries to connect people to information and ideas, our grant programs are designed to help these institutions sustain cultural heritage, enhance learning and innovation, and build professional capacity.

The Institute's peer review process evaluates applications in a transparent and equitable manner, and helps museums and libraries to develop programs that have the greatest impact on their communities or on the museum and library fields as a whole. All of the Institute's programs help to leverage private and public partnerships to support and expand the impact of good programs.

This guide provides a succinct overview of the Institute's programs, useful tips and tools you can use to develop competitive grant applications, and, most importantly, staff contact information for each program.

I know I speak for everyone here at the Institute when I say I am eager to work with you this year and in the years to come. We look forward to hearing from you.

Sincerely,



Dr. Anne-Imelda M. Radice
Director, Institute of Museum and Library Services



to Information and Ideas

TABLE OF CONTENTS

Agency Overview

- 02 About the Institute of Museum and Library Services
- 03 National Initiatives:
 - Connecting to Collections
 - Museums and Libraries Engaging America's Youth
 - National Awards for Museum and Library Service
 - WebWise Conference on Libraries and Museums in the Digital World
- 05 Information for Applicants
- 07 Library Eligibility
- 08 Museum Eligibility

Opportunities for Both Libraries and Museums

- 10 National Leadership Grants
- 11 National Awards for Museum and Library Service
- 11 Connecting to Collections: Planning Grants
- 12 Federal Partnership Activities:
 - Advancing Knowledge
 - The Big Read
 - Coming Up Taller
 - Save America's Treasures

Library Opportunities

- 14 Grants to State Library Administrative Agencies
- 14 Laura Bush 21st Century Librarian Program
- 15 Native American Library Services:
 - Basic Grants
 - Enhancement Grants
- 16 Native Hawaiian Library Services

Museum Opportunities

- 18 21st Century Museum Professionals
- 18 Conservation Assessment Program
- 19 Conservation Project Support
- 19 Museum Assessment Program
- 20 Museums for America
- 20 Museum Grants for African American History and Culture
- 21 Native American/Native Hawaiian Museum Services Program

Agency Information

- 24 Staff Directory
- 26 National Museum and Library Services Board

Overview

ABOUT THE INSTITUTE OF MUSEUM AND LIBRARY SERVICES

The Institute of Museum and Library Services is the primary source of federal support for the nation's 122,000 libraries and 17,500 museums. Our mission is to create strong libraries and museums that connect people to information and ideas. The Institute works at the national level and in coordination with state and local institutions and organizations to sustain heritage, culture, and knowledge; enhance learning and innovation; and support professional development.

The Institute supports the full range of museums, including art, history, science and technology, children's, natural history, historic houses, nature centers, botanical gardens, and zoos; and all types of libraries, including public, school, academic, research, and archival. Our robust capacity for research, evaluation, policy analysis, grantmaking, and partnerships help make it possible for libraries and museums to be leaders in their communities.

Museums and libraries are among America's leading public institutions, making knowledge available to millions at little or no cost. As public institutions, they must meet a high threshold of mission accountability and use resources wisely for public good.

Through grants and information resources, the Institute annually reaches thousands of museums and libraries in myriad ways—from providing much needed technical assistance for small institutions to establishing national and replicable models, strengthening state networks, and supporting professional development. To aid institutions in program design, the Institute provides tools for strategic planning and evaluation. Funding from the Institute helps museums and libraries operate effectively and give value to their communities. It also leverages additional public and private support.

Collecting and disseminating results from funded projects, engaging in research, and publishing reports enables the Institute of Museum and Library Services to make a significant contribution to library, museum, and information policy and practice in the United States.

NATIONAL INITIATIVES



A Call to Action...

Connecting to Collections is a major initiative that the Institute launched on behalf of our nation's collections. The IMLS-supported Heritage Health Index (HHI), published in 2005, made clear that our collections of objects, documents, digital material, and living collections are not only essential to America's cultural health, but that they are imperiled and in need of swift action. The agency is responding to the HHI clarion call to action by launching a multifaceted initiative that will build on our distinguished record of helping museums and libraries care for their collections and prepare for possible disaster. See www.heritagepreservation.org/HHI for more information.



Cover of HHI Report, published in 2005.

The initiative will raise public awareness of the importance of collections care, underscoring the fact that our nation's collections are an essential part of the American story. In addition to spotlighting ongoing work in grant programs, the initiative includes four components:

- 1 A National Conservation Summit** to be held in Washington, DC in June of 2007. This summit will be open to invitees only, and a DVD summary of the proceedings will be made available afterwards.
- 2 Four Regional Forums** to take place in cities across the nation beginning in January 2008 and continuing through June 2009.
- 3 A Conservation Bookshelf** that will comprise books, bibliographies, a guide to online resources, DVDs, or other high-quality materials. The bookshelf will be available through a streamlined application process.
- 4 Planning Grants** to each state, commonwealth, and territory for the purpose of creating conservation plans to address the recommendations of the Heritage Health Index. The agency plans to make these awards over two fiscal years. See page 11 for details.

NATIONAL INITIATIVES

NATIONAL AWARDS FOR MUSEUM AND LIBRARY SERVICE

The National Awards for Museum and Library Service honor outstanding institutions that make significant and exceptional contributions to their communities. Selected institutions demonstrate extraordinary and innovative approaches to public service, exceeding the expected levels of community outreach and core programs generally associated with its services. The award includes prizes of \$10,000 to each recipient and an awards ceremony that is held in Washington, DC. See page 11 for nomination information.



Mrs. Bush makes remarks at the 2006 National Awards Ceremony. Photo by Bob Burgess.



Museums and libraries have resources—collections, staff, programs—that engage youth by inspiring curiosity and fostering learning. These cultural institutions can also provide safe and welcoming environments for kids. Libraries and museums are essential community partners that have a significant role to play in helping youth succeed in school, work, and life.

In 2006, through its Museums and Libraries Engaging America's Youth initiative, the

Institute looked back at the youth-oriented programs it had funded to examine what works and share effective practices. A convening of practitioners, educators, and informal learning experts looked at elements of successful programs—positive environment, institutional support, professional development, impact, evaluation—and how museums and libraries can enhance their role as community partners.

The Institute will share the results of the study—survey results, key findings, and a practitioners' guide—through meetings, resources, and publications. See our Web site (www.imls.gov/youth) for information and resources as they become available in 2007 and 2008.



Since 2000, the WebWise conference has brought together representatives of museums, libraries, archives, systems science, education, and other fields interested in the future of high-quality online content for inquiry and learning. This annual conference highlights recent research and innovations in digital technology, explores their potential impacts

on library and museum services, and promotes effective museum and library practices in the digital environment. It also provides recipients of technology-based grants from the Institute with the opportunity to showcase exemplary projects. The theme for the 2007 conference was "Stewardship in the Digital Age: Managing Museum and Library Collections for Preservation and Use." Check our Web site at www.imls.gov/webwise for proceedings, podcasts, and more, including updates on the 2008 conference.

INFORMATION FOR APPLICANTS

Application Deadlines and Announcements

Grant and award deadlines generally remain the same from year to year. Should a deadline fall on a Sunday or a holiday, the deadline is extended to the following business day. Applicants must submit their applications via Grants.gov by 11:59 EST on the deadline date. Please note that the Institute will generally not accept applications that have not been validated by Grants.gov. Deadlines are listed in chronological order below.

Deadline	Program	Awards Announced
Oct. 1, 2007	Conservation Project Support	Mid-April
Nov. 1, 2007	Museums for America	Mid-July
Dec. 1, 2007	Conservation Assessment Program	Mid-April
Dec. 15, 2007	Laura Bush 21st Century Librarian Program	Mid-June
Jan. 15, 2008	Museum Grants for African American History and Culture	Mid-July
Feb. 1, 2008	National Leadership Grants	Mid-September
Feb. 15, 2008	Museum Assessment Program	Mid-June
Feb. 15, 2008	National Awards for Museum and Library Service	Fall
Mar. 1, 2008	Native American Library Services Basic Grants with Education/Assessment Option	Mid-June
Mar. 15, 2008	21st Century Museum Professionals	Mid-September
Apr. 1, 2008	Native American/Native Hawaiian Museum Services Program	Mid-September
May 1, 2008	Native American Library Services: Enhancement Grants	Mid-September
May 15, 2008	Native Hawaiian Library Services Grants	Mid-September
June 30, 2008	New Five-Year Plans due for Grants to State Library Administrative Agencies	

Getting Started

The best place for interested applicants to start is our Web site, www.ims.gov. Our "Grant Applicants" section provides resources to help grant seekers develop competitive applications, including grant program guidelines and samples of successful applications. The site is a one-stop shop for libraries and museums who want to apply for grants, read publications, and learn about community partnerships, planning, evaluation, and much more. Additionally, applicants should feel free to contact the program staff with any questions along the way.

Grant program guidelines and applications become available on our Web site approximately 90 days before the program deadline. Until the 2008 guidelines are available, the 2007 versions will remain available for reference. Please note that you must submit a current 2008 application to be eligible for a grant. While the Institute will not be printing and distributing bound copies of our 2008 guidelines, a printed copy is available by mail upon request by e-mailing imlsinfo@imls.gov. The Institute will provide visually impaired or learning-disabled persons with an audio recording of our publications upon request.

INFORMATION FOR APPLICANTS

Grants.gov

As part of the President's E-Government initiative, the federal government developed Grants.gov, a single Web site for organizations to electronically find and apply for competitive grant opportunities from all 26 of the federal grant-making agencies. In the 2008 grant cycle, the Institute will require all applicants to apply online through Grants.gov. Applicants who are unable to use Grants.gov should contact an IMLS program officer. For more information on the process of applying through Grants.gov, visit www.grants.gov/GetStarted.

Review Process

The Institute uses a well-respected peer review process that includes individual field review and/or panel review to competitively evaluate all eligible and complete applications. Reviewers are professionals in the field who have relevant knowledge and expertise in the types of activities and organizations identified in the applications. Reviewers are instructed to evaluate proposed projects according to the criteria identified in the program guidelines. The Institute's Director makes funding decisions based on the reviewers' evaluations and the overall goals of the program and the agency.

How to Serve as a Reviewer

All competitive awards are reviewed by library and museum professionals who know the needs of communities, can share promising practices, and are well versed in the issues and concerns of museums and libraries today. There are many benefits to volunteering to review applications. If you are selected to serve, you will help the Institute and the museum and library communities and strengthen the grant review process. If you are interested in serving as a reviewer for the Institute, you can enter information about yourself in our database of potential reviewers by submitting your information on our online reviewer forms at www.imls.gov/reviewers/reviewers.shtml.

Project Results and Evaluation

An application's proposed plan for project evaluation is a significant element in competitive review. The Institute is committed to expanding access to museum and library resources and to increasing and communicating the value of museums and libraries. We promote outcomes-based planning and measurement as powerful management tools to meet this commitment. Applications that describe benefits in terms of adoption or use, or knowledge or other learning results, whether for professional peers or end users, should identify their specific audiences and should say how the project will objectively and concretely measure outcomes. The Institute expects each application budget to include specific and sufficient resources for such evaluation and for the application of interim findings to strengthen project results.

Potential applicants who are not familiar with models of outcomes-based planning and measurement should see www.imls.gov/project_planning, www.imls.gov/applicants/obe.shtml, and www.shapingoutcomes.org. The Institute's staff members are available for technical assistance in developing project evaluation plans that support the agency's goals.

Primary Source

The Institute offers a free, monthly e-mail newsletter called *Primary Source*. It provides current information about our initiatives and grant programs, reminders of important deadlines, and valuable links to information on our Web site. Every month, the newsletter highlights a selected grant project, demonstrating how museums and libraries across the country use grants from the Institute to further their service to the public. To read past issues or to subscribe, visit www.imls.gov/primarysource.

GENERAL LIBRARY ELIGIBILITY

An eligible library applicant must be:

- either a unit of state or local government or private nonprofit organization that has tax-exempt status under the Internal Revenue Code;
- located in one of the fifty states of the United States, the District of Columbia, the Commonwealth of Puerto Rico, Guam, American Samoa, the Virgin Islands, the Commonwealth of the Northern Mariana Islands, the Republic of the Marshall Islands, the Federated States of Micronesia, or the Republic of Palau; and
- one of the six types of organizations listed below:
 1. A library or a parent organization, such as a school district, a municipality, a state agency, or an academic institution, that is responsible for the administration of a library. Eligible libraries include public libraries, elementary and secondary school libraries, college and university libraries, research libraries and archives that are not an integral part of an institution of higher education and that make publicly available library services and materials that are suitable for scholarly research and not otherwise available, and private or special libraries that have been deemed eligible to participate in this program by the state in which the library is located.
 2. An academic or administrative unit, such as a graduate school of library and information science, which is a part of an institution of higher education through which it would make application.
 3. A digital library, if it makes library materials publicly available and provides library services, including selection, organization, description, reference, and preservation under the supervision of at least one permanent professional staff librarian.
 4. A library agency that is an official agency of a state or other unit of government and is charged by the law governing it with the extension and development of public library services within its jurisdiction.
 5. A library consortium that is a local, statewide, regional, interstate, or international cooperative association of library entities that provides for the systematic and effective coordination of the resources of eligible libraries, as defined above, and information centers that work to improve the services delivered to the clientele of these libraries.
 6. A library association that exists on a permanent basis, serves libraries or library professionals on a national, regional, state, or local level, and engages in activities designed to advance the well-being of libraries and the library profession.

Note: Special conditions of eligibility apply to the Grants to States program, some categories of the Laura Bush 21st Century Librarian Program, the National Leadership Grants program, and the Native American and Native Hawaiian Library Services programs. Please see the individual guidelines for these programs for specific eligibility requirements.

GENERAL MUSEUM ELIGIBILITY

All types of museums, large and small, are eligible for funding. Eligible museums include aquariums, arboretums and botanical gardens, art museums, youth museums, general museums, historic houses and sites, history museums, nature centers, natural history and anthropology museums, planetariums, science and technology centers, specialized museums, and zoological parks. Federally operated and for-profit museums may not apply for funds from the Institute. An eligible applicant must be:

- either a unit of state or local government or a private not-for-profit organization that has tax-exempt status under the Internal Revenue Code;
- located in one of the fifty states of the United States of America, the District of Columbia, the Commonwealth of Puerto Rico, Guam, American Samoa, the Virgin Islands, the Commonwealth of the Northern Mariana Islands, the Republic of the Marshall Islands, the Federated states of Micronesia, or the Republic of Palau; and
- a museum that, using a professional staff, (1) is organized on a permanent basis for essentially educational or aesthetic purposes; (2) owns or uses tangible objects, either animate or inanimate; (3) cares for these objects; and (4) exhibits these objects to the general public on a regular basis through facilities which it owns or operates.

An organization uses a professional staff if it employs at least one professional staff member, or the full-time equivalent, whether paid or unpaid primarily engaged in the acquisition, care, or exhibition to the public of objects owned or used by the institution.

An organization “exhibits objects to the general public” if such exhibition is a primary purpose of the institution. Further, an organization which exhibits objects to the general public for at least 120 days a year shall be deemed to exhibit objects to the general public on a regular basis. An organization which exhibits objects by appointment may meet the requirement to exhibit objects to the general public on a regular basis, if it can establish, in light of the facts under all the relevant circumstances, that this method of exhibition does not unreasonably restrict the accessibility of the institution’s exhibits to the general public. Please note that an organization which does not have as a primary purpose the exhibition of objects to the general public, but which can demonstrate that it exhibits objects to the general public on a regular basis as a significant, separate, distinct, and continuing portion of its activities, and that it otherwise meets the museum eligibility requirements, may be determined to be eligible as a museum under these guidelines.

A museum located within a parent organization that is a state or local government or multipurpose nonprofit entity, such as a university, historical society, foundation, or a cultural center, may apply on its own behalf, if the museum: (1) is able to independently fulfill all the eligibility requirements listed above; (2) functions as a discrete unit within the parent organization; (3) has its own fully segregated and itemized operating budget; and (4) has the authority to make the application on its own. When any of the last three conditions cannot be met, a museum may apply through its parent organization.

Prospective applicants that are not sure whether they fulfill all of these requirements should contact the Institute to discuss their eligibility before applying. The Institute may require additional supporting documentation from the applicant to determine the museum’s autonomy. Each eligible applicant within a single parent organization should clearly delineate its own programs and operations in the application narrative. A parent organization that controls multiple museums that are not autonomous but which are otherwise eligible may submit only one application per grant program; the application may be submitted by the parent organization on behalf of one or more of the eligible museums.

Note: Special conditions of eligibility apply to the 21st Century Museum Professionals program, the Museum Grants for African American History and Culture program, the National Leadership Grants program, and the Native American/Native Hawaiian Museum Services Program. Please see the individual guidelines for these programs for specific eligibility requirements.

Opportunities for Both Libraries and Museums

NATIONAL LEADERSHIP GRANTS

Deadline: February 1, 2008

Grant Amount: \$25,000–\$1,000,000 for museums; \$50,000–\$1,000,000 for libraries

Grant Period: Up to three years

Matching Requirement: 1:1 for requests over \$250,000, except research projects. Cost sharing of at least one-third is encouraged for requests under \$250,000 and for research projects. Demonstration projects are subject to nonresearch matching provisions.

Eligibility: Libraries that fulfill the general criteria for libraries may apply (see page 7). See program guidelines for special conditions of eligibility for this program.

Museums that fulfill the general criteria for museums may apply (see page 8). Private not-for-profit museum services organizations or associations that engage in activities designed to advance the well-being of museums and the museum profession also may apply. In addition, institutions of higher education, including public and not-for-profit universities, are eligible.

Program Overview: National Leadership Grants support projects that have the potential to elevate museum and library practice. The Institute seeks to advance the ability of museums and libraries to preserve culture, heritage and knowledge while enhancing learning.

Successful proposals will have national impact and generate results—new tools, research, models, services, practices, or alliances—that can be widely adapted or replicated to extend the benefit of federal investment. IMLS seeks to fund projects that have the following characteristics:

Strategic Impact—Proposals should address key needs and challenges that face libraries and museums. They should expand the boundaries within which libraries and museums operate, show the potential for far-reaching impact, and influence practice throughout the museum and/or library communities.

Innovation—Proposals should demonstrate a thorough understanding of current practice and knowledge about the project area and show how the project will advance the state of the art of museum and library service.

Collaboration—While partners are not required in all NLG categories, the Institute has found that involving carefully chosen partners with complementary competencies and resources can create powerful synergies that extend project impact. Proposals should show understanding of the challenges of collaboration and propose means for addressing them.

Collaborative planning grants are also available to enable project teams from more than one institution to work together to plan a project for a National Leadership Grant.

FOR MORE INFORMATION

Web site:

www.imls.gov/applicants/grants/NationalLeadership.shtm

Program Contacts for Libraries:

Martha Crawley, Senior Program Officer
202/653-4667; mcrawley@imls.gov

Susan Malbin, Senior Program Officer
202/653-4768; smalbin@imls.gov

Mary Allen, Program Specialist
202/653-4687; mallen@imls.gov

Janet M. Ciciarelli, Program Specialist
202/653-4798; jciciarelli@imls.gov

Program Contacts for Museums:

Dan Lukash, Senior Program Officer
202/653-4644; dlukash@imls.gov

Mark Feitl, Program Specialist
202/653-4635; mfeitl@imls.gov

Jennifer Headley, Program Specialist
202/653-4702; jheadley@imls.gov

NATIONAL AWARDS FOR MUSEUM AND LIBRARY SERVICE

Deadline: February 15, 2008

Award Amount: \$10,000

Eligibility: Institutions that fulfill the general criteria may apply (see pages 7-8).

Program Overview: The National Awards for Museum and Library Service honor outstanding institutions that make significant and exceptional contributions to their communities. Selected institutions demonstrate extraordinary and innovative approaches to public service, exceeding the expected levels of community outreach and core programs generally associated with museum and library services.

The main qualification for selection is exceptional community service, as demonstrated by the institution's ongoing commitment, at every level, to its community.

Nominations should describe:

- The institution's goal in serving its community.
- The population served.
- How the institution works with the community to achieve the goal.
- The outcome of their efforts during the past two to three years.

FOR MORE INFORMATION

Web site: www.ims.gov/awards

Program Contact for Libraries:

Michele Farrell, Senior Program Officer
202/653-4656; mfarrell@ims.gov

Program Contact for Museums:

Christopher J. Reich, Senior Program Officer
202/653-4685; creich@ims.gov

CONNECTING TO COLLECTIONS: PLANNING GRANTS

Deadline: October 15, 2007

Grant Amount: \$20,000

Grant Period: Up to two years

Matching Requirement: 1:1

Eligibility: Institutions that fulfill the general criteria may apply (see pages 7-8).

Program Overview: The Institute will offer Planning Grants to every state, commonwealth, and territory for the purpose of creating statewide responses to the recommendations of the Heritage Health Index, the first comprehensive survey to assess the condition and preservation needs of U.S. collections (see www.heritagepreservation.org/HHI for more information):

- providing safe conditions for collections;
- developing an emergency plan to protect collections;
- assigning responsibility for collections care; and

- assuming responsibility to provide the support necessary for the survival of collections.

In 2008 and 2009, these grants will be made one per state, commonwealth, and territory. They are designed to encourage people and institutions in each state to talk across boundaries and cooperate on a plan that would benefit all.

The project activities are expected to vary widely, according to the needs and institutions in each state, and they do not need to address all of the four recommendations. Each state should indicate its most pressing needs, report what has already been done, name the organizations and people to be involved in the planning process, and outline specific next steps.

FOR MORE INFORMATION

Web site:

www.ims.gov/about/collections.shtm

Program Contact:

Mary Estelle Kennelly, Associate Deputy Director for Museum Services
202/653-4636; mekennelly@ims.gov

FEDERAL PARTNERSHIP ACTIVITIES

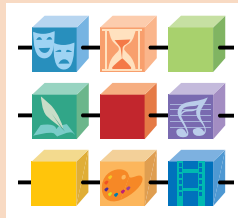
Advancing Knowledge: The IMLS/NEH Digital Partnership

The Advancing Knowledge grant program funds innovative, collaborative humanities projects using the latest digital technologies for the benefit of the American public, humanities scholarship, and the nation's cultural community. Grants made through this new partnership will help teachers, scholars, museums, and libraries take advantage of developing technology.

Successful projects funded through this partnership will explore new ways to share, examine, and interpret humanities collections in a digital environment and develop new uses and audiences for existing digital resources. They will also bring museum, library, archives, and IT professionals together with humanities scholars to use digital technology to provide new perspectives on humanities collections, offer new interpretive contexts, and allow existing resources to be widely shared. For more information, see www.neh.gov/grants.

Coming Up Taller

Coming Up Taller awards recognize and support outstanding community arts and humanities programs that celebrate the creativity of America's young people by providing them with learning opportunities and chances to contribute to their communities. These awards focus national attention on exemplary programs currently fostering the creative and intellectual development of America's children and youth through education and practical experience in the arts and the humanities.



This awards program is a project of the President's Committee on the Arts and the Humanities in partnership with the Institute of Museum and Library Services, the National Endowment for the Arts, and the National Endowment for the Humanities. For more information, see www.cominguptaller.org.

The Big Read

An initiative of the National Endowment for the Arts offered in partnership with the Institute of Museum and Library Services and in cooperation with Arts Midwest, the Big Read aims to revitalize the role of literature in American popular culture by offering grants to encourage local communities to inspire literary reading.



Organizations selected to participate in the Big Read will receive a grant, financial support to attend a national orientation meeting, educational and promotional materials for broad distribution, an organizer's guide for developing and managing Big Read activities, and more. For more information, see www.neabigread.org.

Save America's Treasures

Save America's Treasures makes critical investments in the preservation of our nation's most significant and endangered cultural treasures, which illustrate and interpret the great events, ideas, and people that contribute to America's history and culture. These treasures include the built environment as well as documents, records, artifacts, and artistic works. Collectively, Save America's Treasures projects tell our nation's story and ensure that our legacy is passed on to future generations.

Administered by the National Park Service in collaboration with the President's Committee on the Arts and the Humanities, Save America's Treasures' other federal agency partners include the National Endowment for the Arts, the National Endowment for the Humanities, and the Institute of Museum and Library Services. The National Trust for Historic Preservation has been the program's principal private partner since its inception. For more information, see www.saveamericastreasures.org.

Library Opportunities

GRANTS TO STATE LIBRARY ADMINISTRATIVE AGENCIES

Deadline: Revisions (if needed) to Five-Year Plan are due June 30, 2008.

Grant Amount: Each state receives an annual minimum allotment set by Congress, plus additional funds based on population

Grant Period: Allotments may be expended over a 24-month period

Eligibility: State library administrative agencies located in one of the fifty states of the United States, the District of Columbia, the Commonwealth of Puerto Rico, Guam, American Samoa, the U.S. Virgin Islands, the Commonwealth of the Northern Mariana Islands, the Republic of the Marshall Islands, the Federated States of Micronesia, or the Republic of Palau are eligible to submit

five-year plans. For information about funding opportunities at the state level, contact the specific state library administrative agency.

Program Overview: The Library Services and Technology Act (LSTA), a section of the Museum and Library Services Act of 2003, promotes access to information resources provided by all types of libraries. Through the legislation, the Institute provides funds to state library administrative agencies. These agencies may use the appropriation to support statewide initiatives and services. They also may distribute the funds through subgrant competitions or cooperative agreements with public, academic, school, and special libraries in their state. Based on the goals of the LSTA, each state develops for its programs a five-year plan that strengthens the efficiency, reach, and effectiveness of library services in the state.

FOR MORE INFORMATION

Web site:

www.ims.gov/programs/programs.shtm

Program Contact:

George V. Smith, Associate Deputy Director
202/653-4650; stateprograms@ims.gov

LAURA BUSH 21ST CENTURY LIBRARIAN PROGRAM

Deadline: December 15, 2007

Grant Amount: \$50,000–\$1,000,000

Grant Period: Up to three years, except for doctoral program projects, which may be up to four years

Matching Requirement: Fifty percent of total project costs. Funds requested for student support and for research projects are not subject to matching requirements.

Eligibility: Libraries that fulfill the general criteria for libraries may apply (see page 7). See program guidelines for special conditions of eligibility for this program.

Program Overview: This program supports projects to develop faculty and library leaders, to recruit and educate the next generation of librarians, and to conduct research on the library profession and support early career research on any area of library and information science by tenure-track, untenured faculty in graduate schools of library and information science. It also supports projects to attract high school and college students to consider careers in libraries, to build institutional capacity in graduate schools of library and information science, and to assist in the professional development of librarians and library staff.

FOR MORE INFORMATION

Web site:

www.ims.gov/applicants/grants/21CenturyLibrarian.shtm

Program Contacts:

Stephanie Clark, Senior Program Officer
202/653-4662; sclark@ims.gov

Karmen Bisher, Program Specialist
202/653-4664; kbisher@ims.gov

NATIVE AMERICAN LIBRARY SERVICES

Basic Grant with Education/ Assessment Option

Deadline: March 1, 2008

Grant Amount: Varies

Grant Period: One year

Eligibility: Indian tribes and Alaska Native villages and corporations are eligible to apply for funding under this program. Entities such as libraries, schools, tribal colleges, and departments of education are not eligible applicants, although they may be involved in the administration of this program and their staff may serve as project directors. For purposes of funding under this program, "Indian tribe" means any tribe, band, nation, or other organized group or community, including any Alaska Native village, regional corporation, or village corporation (as defined in or established pursuant to the Alaska Native Claims Settlement Act [43 U.S.C. § 1601 et seq.]), that is recognized by the Secretary of the Interior as eligible for the special programs and services provided by the United States to Indians because of their status as Indians. Eligible entities, except for the recognized Alaska native villages, regional corporations, and village corporations, are listed on the Bureau of Indian Affairs Web site (www.doi.gov/bureau-indian-affairs.html). Alaskan entities should refer to applicable provisions in the Alaska Native Claims Settlement Act referenced above. See program guidelines for specific eligibility criteria.

Program Overview: The Native American Library Services Basic Grant is distributed in equal amounts among eligible applicants. Basic Grants are available to support existing library operations and to maintain core library services. The Education/Assessment Option is supplemental to the Basic Grant. It also is noncompetitive and must be requested. The purpose of the Education/Assessment Option is to provide funding for library staff to attend continuing education courses and training workshops on- or off-site, for library staff to attend or give presentations at conferences related to library services, and to hire a consultant for an on-site professional library assessment.

Enhancement Grant

Deadline: May 1, 2008

Grant Amount: Up to \$150,000

Grant Period: Up to two years

Eligibility: See eligibility requirements for the Basic Grant. Indian tribes and Alaska Native villages are eligible to apply for the Enhancement Grant only if they have applied for a Native American Library Services Basic Grant in the same fiscal year. See program guidelines for specific eligibility criteria.

Program Overview: Enhancement Grants support projects to enhance existing library services or implement new library services, particularly as they relate to the goals of the Library Services and Technology Act (LSTA) listed here:

- to expand services for learning and access to information and educational resources in a variety of formats, in all types of libraries, for individuals of all ages;
- to develop library services that provide all users with access to information through local, state, regional, national, and international electronic networks;
- to provide electronic and other linkages between and among all types of libraries;
- to develop public and private partnerships with other agencies and community-based organizations;
- to target library services to help increase access and ability to use information resources for individuals of diverse geographic, cultural, and socioeconomic backgrounds, individuals with disabilities, and individuals with limited functional literacy or information skills; and
- to target library and information services to help increase access and ability to use information resources for persons having difficulty using a library and for underserved urban and rural communities, including children from birth to age 17 from families with incomes below the poverty line (as defined by the Office of Management and Budget).

FOR MORE INFORMATION

Web site for Basic Grant:

www.imls.gov/applicants/grants/NativeAmerican.shtm

Web site for Enhancement Grant:

www.imls.gov/applicants/grants/NativeEnhance.shtm

Program Contacts:

Alison Freese, Senior Program Officer
202/653-4665; afreese@imls.gov

Sharon McCoy, Program Specialist
202/653-4668; smccoy@imls.gov

NATIVE HAWAIIAN LIBRARY SERVICES

Deadline: May 15, 2008

Grant Amount: Varies

Grant Period: One year

Eligibility: Native Hawaiian Library Services grants are available to nonprofit organizations that primarily serve and represent Native Hawaiians (as the term is defined in 20 U.S.C. § 7517). The term “Native Hawaiian” means a person who is a citizen of the United States and a descendant of the aboriginal people who, before 1778, occupied and exercised sovereignty in the areas that now comprise the state of Hawaii. See program guidelines for specific eligibility criteria.

Program Overview: The Native Hawaiian Library Services program provides new opportunities for improved library services for an important part of the nation’s community of library users. Funds may be used to enhance existing library services or implement new library services, particularly as they relate to the goals of the Library Services and Technology Act (LSTA) listed here:

- to expand services for learning and access to information and educational resources in a variety of formats, in all types of libraries, for individuals of all ages,
- to develop library services that provide all users with access to information through local, state, regional, national, and international electronic networks,
- to provide electronic and other linkages between and among all types of libraries,
- to develop public and private partnerships with other agencies and community-based organizations,
- to target library services to help increase access and ability to use information resources for individuals of diverse geographic, cultural, and socioeconomic backgrounds, individuals with disabilities, and individuals with limited functional literacy or information skills, and
- to target library and information services to help increase access and ability to use information resources for persons having difficulty using a library and for underserved urban and rural communities, including children from birth to age 17 from families with incomes below the poverty line (as defined by the Office of Management and Budget).

FOR MORE INFORMATION

Web site:

www.imls.gov/applicants/grants/NativeHawaiian.shtm

Program Contacts:

Alison Freese, Senior Program Officer
202/653-4665; afreese@imls.gov

Sharon McCoy, Program Specialist
202/653-4668; smccoy@imls.gov

Museum Opportunities

21ST CENTURY MUSEUM PROFESSIONALS

Deadline: March 15, 2008

Grant Amount: \$5,000-\$500,000

Grant Period: Up to three years

Matching Requirement: 1:1

Eligibility: Museums that fulfill the eligibility criteria for museums (see page 8) may apply. Public or private not-for-profit agencies, organizations or associations that engage in activities designed to advance museums and the museum profession may also apply. In addition, institutions of higher education, including public and nonprofit universities are eligible.

Program Overview: Museum professionals need high levels of knowledge and expertise as they help create public value for the communities they serve.

The purpose of the 21st Century Museum Professionals program is to increase the capacity of museums by improving the knowledge and skills of museum professionals. 21st Century Museum Professionals grants are intended to have an impact upon multiple institutions by reaching broad groups of museum professionals throughout a city, county, state, region, or the nation. Grants fund a broad range of activities, including the development and implementation of classes, seminars, and workshops; resources to support leadership development; collection, assessment, development and/or dissemination of information that leads to better museum operations; activities that strengthen the use of contemporary technology tools to deliver programs and services; support for the enhancement of pre-professional training programs; and organizational support for the development of internship and fellowship programs.

FOR MORE INFORMATION

Web site:

www.imls.gov/applicants/grants/21CenturyMuseums.shtm

Program Contacts:

Christopher J. Reich, Senior Program Officer
202/653-4685; creich@imls.gov

Robert Trio, Program Specialist
202/653-4689; rtrio@imls.gov

CONSERVATION ASSESSMENT PROGRAM

Deadline: December 1, 2007

Program Overview: The Conservation Assessment Program (CAP) is supported through a cooperative agreement between the Institute of Museum and Library Services and Heritage Preservation. The general conservation assessment (unlike a detailed collection survey) provides an overview of all of the museum's collections as well as its environmental conditions and policies and procedures relating to collections care.

The program supports a two-day site visit by a conservation professional to perform the

assessment. For museums located in historic structures, the grant supports a two-day site visit by a preservation architect. Assessment reports are then provided three days later.

CAP also helps institutions with living animal collections, such as zoos and aquariums, that do not have an assessment of the animals' physical conditions and habitats. Institutions with fully surveyed living animal collections (such as those accredited by the American Zoological Association) may use the grant to assess the conservation needs of their material collections only. Botanic gardens and arboretums may use the grant to assess the conservation needs of both their living and material collections.

FOR MORE INFORMATION

Web site:

www.heritagepreservation.org/CAP

Contact:

Kate Marks
1012 14th Street, NW, Suite 1200
Washington, DC 20005
202/233-0800
kmarks@heritagepreservation.org

CONSERVATION PROJECT SUPPORT

Deadline: October 1, 2007

Grant Amount: Up to \$150,000; Up to \$10,000 in additional funds for Education Component

Grant Period: Generally up to two years; three years with strong justification

Matching Requirement: 1:1 for total project request

Program Overview: The Conservation Project Support program awards grants to help museums identify conservation needs and priorities and perform activities to ensure the safekeeping of their collections.

Conservation Project Support grants help museums develop and implement a logical, institution-wide approach to caring for their living and material collections. Applicants should apply for the project that meets one of the institution's highest conservation needs. All applications must demonstrate that the primary goal of the project is conservation care and

not collection management or maintenance.

Grants are available for many types of conservation activities, including surveys (general, detailed condition, or environmental); training; research; treatment; and environmental improvements.

Applicants may receive up to \$10,000 in additional project funding to develop an Education Component that directly relates to their project.

FOR MORE INFORMATION

Web site:

www.ims.gov/applicants/grants/ConservProject.shtm

Program Contacts:

Steven Schwartzman, Senior Program Officer
202/653-4641; sschwartzman@ims.gov

Mark Feitl, Program Specialist
202/653-4635; mfeitl@ims.gov

Robert Trio, Program Specialist
202/653-4689; rtrio@ims.gov

MUSEUM ASSESSMENT PROGRAM

Deadline: February 15, 2008

Program Overview: The Museum Assessment Program (MAP) is supported through a cooperative agreement between the Institute of Museum and Library Services and the American Association of Museums. It is designed to help museums assess their strengths and weaknesses, and plan for the future.

The program provides technical assistance for four kinds of assessments: (1) collections management; (2) governance; (3) institutional; and (4) public dimension. Assessments are funded on a first-come, first-served basis. Museums may apply for MAP assessments in any sequence. Museums that received a MAP assessment grant on or before September 2001 may apply for a grant to fund participation in

that assessment a second time. Application materials can be obtained by contacting the American Association of Museums.

In all MAP assessments, members of the museum staff and governing authority complete a self-study and receive a site visit by one or more museum professionals, who tour the museum and meet with staff, governing officials, and volunteers. The surveyors work with the museum and MAP staff to produce a report evaluating the museum's operations, making recommendations, and suggesting resources.

FOR MORE INFORMATION

Web site:

www.aam-us.org/museumresources/map

Program Contacts:

Jeffrey Buchheit, Assistant Director, MAP
American Association of Museums
1575 Eye Street, NW, Suite 400
Washington, DC 20005
202/289-9118
map@aam-us.org

MUSEUMS FOR AMERICA

FOR MORE INFORMATION

Web site:

www.imls.gov/applicants/grants/ForAmerica.shtm

Program Contacts:

Christine Henry, Senior Program Officer
202/653-4674; chenry@imls.gov

Sandra Narva, Senior Program Officer
202/653-4634; snarva@imls.gov

Jennifer Headley, Program Specialist
202/653-4702; jheadley@imls.gov

Twinet Kimbrough, Program Specialist
202/653-4703; tkimbrough@imls.gov

Reagan Furrow, Program Specialist
202/653-4637; rfurrow@imls.gov

Deadline: November 1, 2007

Grant Amount: \$5,000 - \$150,000

Grant Period: Generally up to two years; three years with strong justification

Matching Requirements: 1:1

Eligibility: Museums that fulfill the Eligibility Criteria for Museums (see page 8) may apply.

Program Overview: Museums for America is the Institute's largest grant program for museums, supporting projects and ongoing activities that build museums' capacity to serve their communities.

Museums for America grants strengthen a museum's ability to serve the public more effectively by supporting high-priority activities that advance the institution's mission and strategic goals. Museums for America grants are designed to be flexible: funds can be used for a wide variety of projects, including: ongoing museum work, research and other behind-the-scenes activities, planning, new programs, purchase of equipment or services, and activities that will support the efforts of museums to upgrade and integrate new technologies.

MUSEUM GRANTS FOR AFRICAN AMERICAN HISTORY AND CULTURE

Deadline: January 15, 2008

Grant Amount: \$5,000-\$150,000

Grant Period: Up to two years

Matching Requirement: 1:1

FOR MORE INFORMATION

Web site:

www.imls.gov/applicants/grants/AfricanAmerican.shtm

Program Contacts:

Christopher J. Reich, Senior Program Officer
202/653-4685; creich@imls.gov

Twinet Kimbrough, Program Specialist
202/653-4703; tkimbrough@imls.gov

Eligibility: Eligible applicants include museums whose primary purpose is African American life, art, history, and/or culture, encompassing the period of slavery; the era of reconstruction; the Harlem Renaissance; the civil rights movement; and other periods of the African Diaspora. Public or private nonprofit organizations whose primary purpose is to support museums identified above may also apply. Historically Black Colleges or Universities

(HBCUs) are also eligible. Please see Program Guidelines for specific eligibility criteria.

Program Overview: Museum Grants for African American History and Culture are intended to enhance institutional capacity and sustainability through professional training, technical assistance, internships, outside expertise, and other tools. Successful proposals will focus on one or more of the following three goals: 1) developing or strengthening knowledge, skills, and other expertise of current staff at African American museums; 2) attracting and retaining professionals with the skills needed to strengthen African American museums; and 3) attracting new staff to African American museum practice and providing them with the expertise needed to sustain them in the museum field.

NATIVE AMERICAN/NATIVE HAWAIIAN MUSEUM SERVICES

Deadline: April 1, 2008

Grant Amount: \$5,000 - \$50,000

Grant Period: Up to 2 years

Matching: No matching requirements

Eligibility: Eligible applicants are

- Federally recognized Indian tribes
- Alaskan Native Villages and corporations, and
- organizations that primarily serve and represent Native Hawaiians

Entities such as museums, libraries, schools, tribal colleges, or departments of education are not eligible applicants, although they may be involved in the administration of the program and their staff may serve as project directors, in partnership with eligible applications.

Program Overview: The Native American/ Native Hawaiian Museum Services program promotes enhanced learning and

innovation within museums and museum related organizations, such as cultural centers. The program provides opportunities for Native American tribes and Native Hawaiian organizations to sustain heritage, culture, and knowledge by strengthened museum services in the following areas:

Programming: Services and activities that support the educational mission of museums and museum-related organizations.

Professional development: Education or training that builds skills, knowledge, or other professional capacity for persons who provide or manage museum service activities. Individuals may be paid or volunteers.

Enhancement of museum services: Support for activities that enable and improve museum services.

FOR MORE INFORMATION

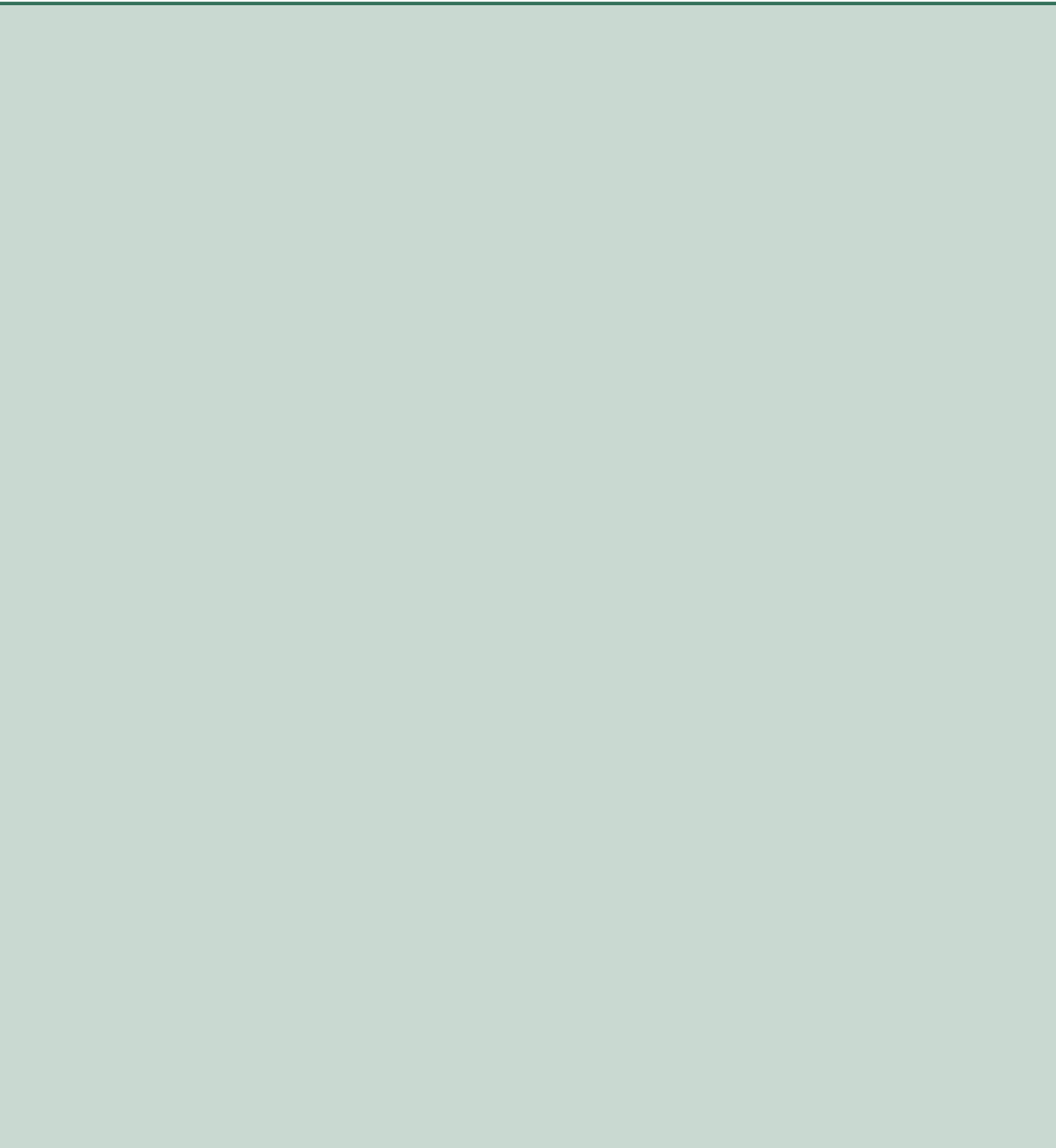
Web site:

www.ims.gov/applicants/grants/NativeServices.shtm

Program Contacts:

Sandra Narva, Senior Program Officer
202/653-4634; snarva@ims.gov

Mark Feitl, Program Specialist
202/653-4635; mfeitl@ims.gov



Agency Information

STAFF DIRECTORY

Office of the Director

202-653-4659

Anne-Imelda M. Radice, Ph.D.
Director

Kate Fernstrom
Chief of Staff

Schroeder Cherry, Ed.D.
Counselor to the Director

Elizabeth Lyons
Special Events and Board Liaison

Sean McDonald
Staff Assistant to the Director

Ellen Schlachter
Special Assistant to the Director

Administration

202-653-4737

Wayne Morlier
Chief Financial Officer

Laura M. Mahoney
Grants Administrator

Earl Davis
Administrative Officer

Wallace Cruz
Contracts Specialist

Linda Gray-Broughton
Grants Administration Specialist

Josie Shell-Brown
Financial Operations Specialist

Operations

202-653-4673

Carol A. Scannelli
Counselor to the Director

Robin Greer
Operations Specialist

Steven White
Operations Specialist

Human Resources

202-653-4727

Alice Macklin
Director

Strategic Partnerships

202-653-4692

Marsha Semmel
Director

Nancy Rogers
Senior Project Coordinator

Abigail Swetz
Program Specialist

General Counsel

202-653-4787

Nancy E. Weiss
General Counsel

Calvin D. Trowbridge III
Deputy General Counsel

Mae Patten
Senior Paralegal Specialist

Policy, Planning, Research, and Communications

202-653-4757

Mamie Bittner
Deputy Director

Mary Downs, Ph.D.
Research Officer

Jeannine Mjoseth
Public Affairs Officer

Karen Motylewski
Evaluation Officer

Kevin O'Connell
Congressional Affairs Officer

Ellen Arnold
Visual Information Specialist

Information Resource Management

202-653-4767

Barbara Smith
E-Projects Officer

Hong Phan
Systems Administrator

Museum Services

202-653-4789

Marsha Semmel
Deputy Director

Mary Estelle Kennelly
Associate Deputy Director for Museum Services

Christine Henry
Senior Program Officer

Dan Lukash
Senior Program Officer

Sandra Narva
Senior Program Officer

Christopher J. Reich
Senior Program Officer

Steven Shwartzman
Senior Program Officer

Mark M. Feitl
Program Specialist

Reagan Furrow
Program Specialist

Jennifer Headley
Program Specialist

Twinet G. Kimbrough
Program Specialist

Robert Trio
Program Specialist

Library Services

202-653-4700

Mary L. Chute
Deputy Director

Donald Delauter, CGMP
Special Assistant to the Deputy Director

State Library Programs

202-653-4678

George Smith, Ph.D.
Associate Deputy Director for State Programs

Laurie Brooks
Senior Program Officer

Terri Brown
Senior Program Officer

Robin Cabot
Senior Program Officer

Michele Farrell
Senior Program Officer

Lisa George
Program Specialist

Discretionary Library Programs

202-653-4700

Joyce Ray, Ph.D.
Associate Deputy Director for Library Services

Stephanie Clark
Senior Program Officer

Martha Crawley, Ph.D.
Senior Program Officer

Alison Freese, Ph.D.
Senior Program Officer

Susan L. Malbin, Ph.D.
Senior Program Officer

Mary Allen
Program Specialist

Karmen Bisher
Program Specialist

Janet M. Ciciarelli
Program Specialist

Sharon McCoy
Program Specialist

NATIONAL MUSEUM AND LIBRARY SERVICES BOARD

The National Museum and Library Services Board (NMLSB) is a twenty-four-member advisory body that includes the director and deputy directors of the Institute, the chair of the National Commission on Libraries and Information Science, and twenty presidentially appointed and Senate-confirmed members of the general public who have demonstrated expertise in, or commitment to, library or museum services. Informed by its collectively vast experience and knowledge, the NMLSB advises the Institute's director on general policy and practices, and on selections for the National Awards for Museum and Library Services.

Chairperson

Anne-Imelda M. Radice

Director, Institute of Museum and Library Services

Members

Beverly E. Allen

Georgia

Katherine M. B. Berger

Virginia

Karen Brosius

South Carolina

John E. Buchanan, Jr.

California

Gail M. Daly

Texas

A. Wilson Greene

Virginia

Donald S. Leslie

Wisconsin

Ioannis N. Miaoulis

Massachusetts

Christina Orr-Cahall

Florida

Amy Owen

Utah

Sandra Pickett

Texas

Judith Ann Rapanos

Michigan

Edwin Rigaud

Ohio

Harry Robinson, Jr.

Texas

Margaret Webster Scarlett

Wyoming

Kevin Starr

California

Katina Strauch

South Carolina

Renee Becker Swartz

New Jersey

Kim Wang

California

Nonvoting Members

Marsha Semmel

Institute of Museum and Library Services

Mary Chute

Institute of Museum and Library Services

C. Beth Fitzsimmons

National Commission on Libraries and Information Science





1800 M Street, NW, 9th Floor

Washington, DC 20036-5802

Official Business

Penalty for Private Use, \$300

Dated Material

OPEN IMMEDIATELY

PBRT STD
US Postage
PAID
Institute of Museum
and Library Services
Permit No. G-274