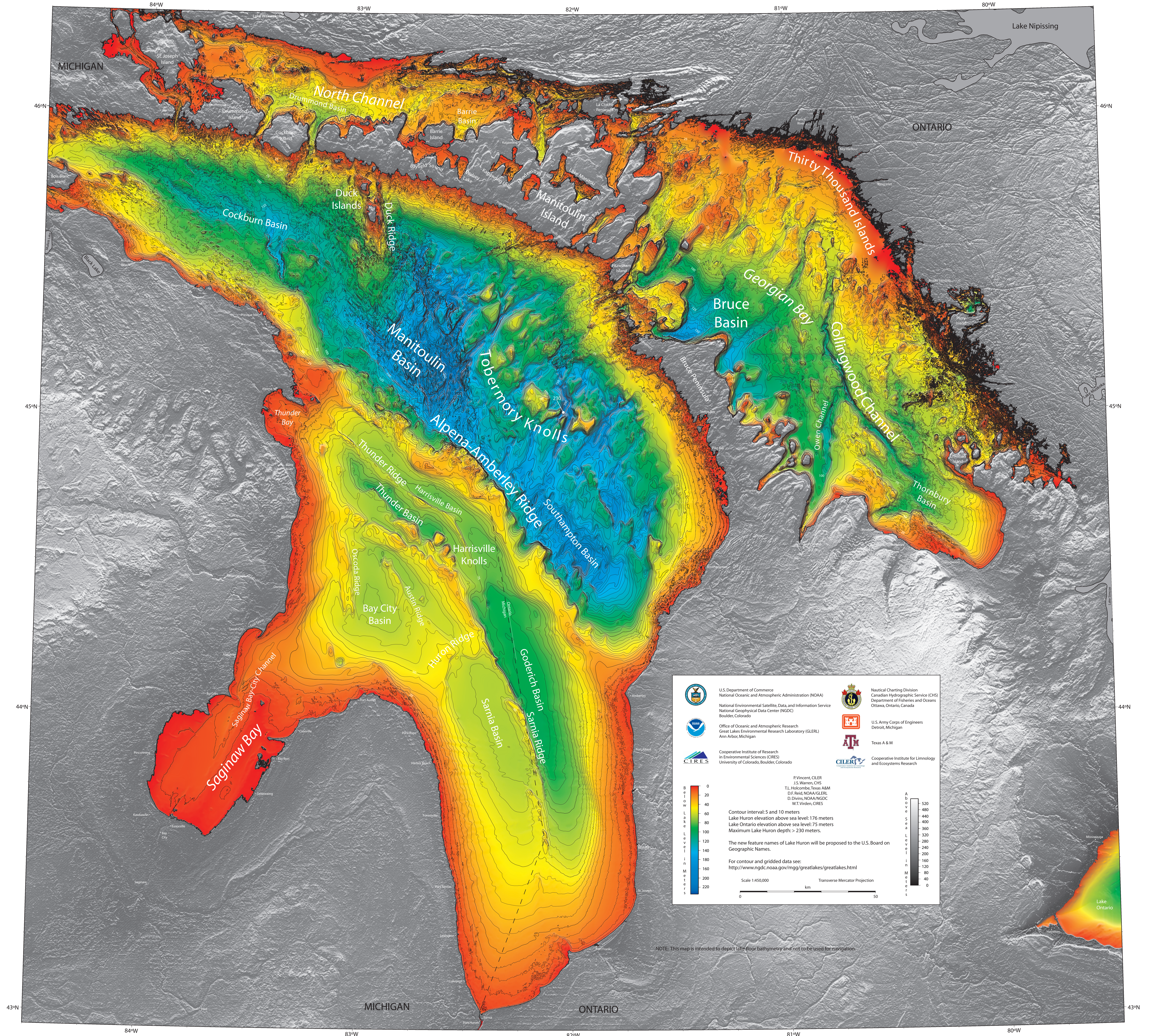






Bathymetry of Lake Huron with Topography





 U.S. Department of Commerce
 National Oceanic and Atmospheric Administration (NOAA)
 National Environmental Satellite, Data, and Information Service
 National Geophysical Data Center (NGDC)
 Boulder, Colorado

 Nautical Charting Division
 Canadian Hydrographic Service (CHS)
 Department of Fisheries and Oceans
 Ottawa, Ontario, Canada

 Office of Oceanic and Atmospheric Research
 Great Lakes Environmental Research Laboratory (GLERL)
 Ann Arbor, Michigan

 U.S. Army Corps of Engineers
 Detroit, Michigan

 Cooperative Institute of Research
 in Environmental Sciences (CIRES)
 University of Colorado, Boulder, Colorado

 Cooperative Institute for Limnology
 and Ecosystems Research

P. Vincent, CIRES
 J.S. Warren, CHS
 T.L. Holcombe, Texas A&M
 D.F. Reid, NOAA/CIRES
 D. Dixon, NOAA/NGDC
 W.T. Virden, CIRES

Contour interval: 5 and 10 meters
 Lake Huron elevation above sea level: 176 meters
 Lake Ontario elevation above sea level: 75 meters
 Maximum Lake Huron depth: > 230 meters.

The new feature names of Lake Huron will be proposed to the U.S. Board on Geographic Names.

For contour and gridded data see:
<http://www.ngdc.noaa.gov/mgg/greatlakes/greatlakes.html>

Scale 1:450,000 Transverse Mercator Projection

0 50
 km

NOTE: This map is intended to depict lake floor bathymetry and not to be used for navigation.