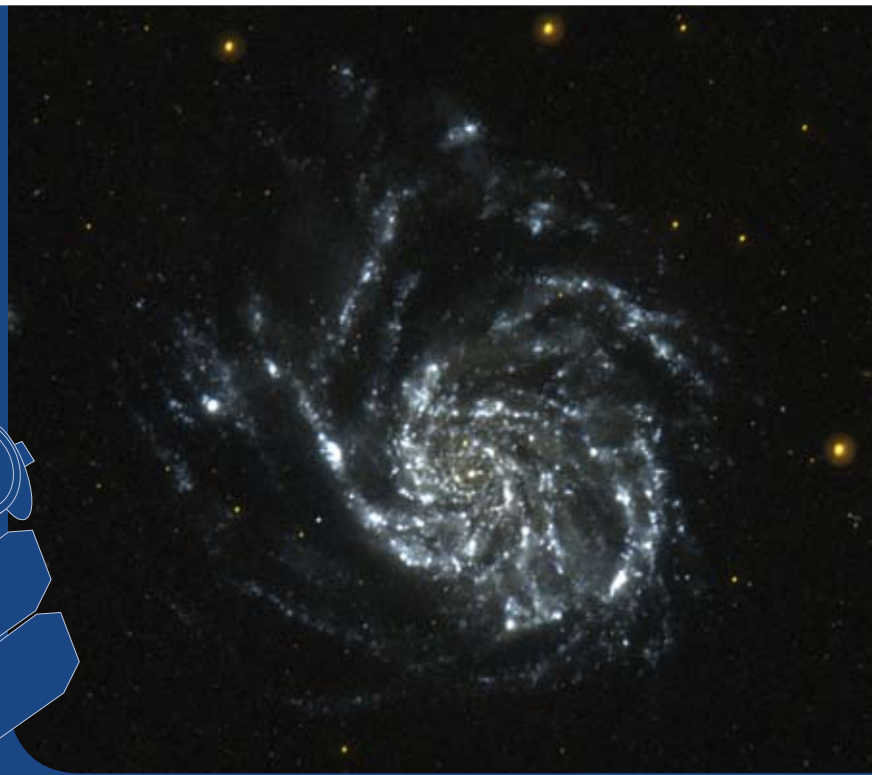
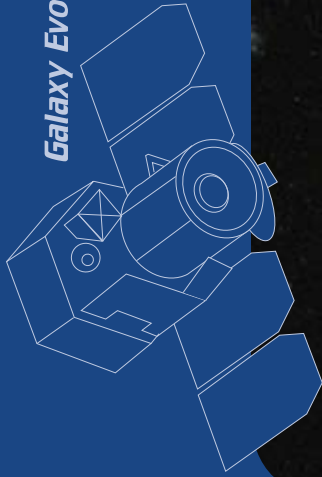


GALEX
Galaxy Evolution Explorer



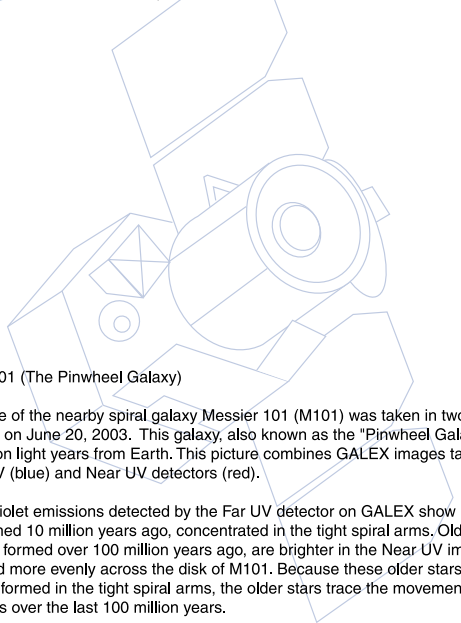
Messier 101 (The Pinwheel Galaxy)



National Aeronautics and
Space Administration

Jet Propulsion Laboratory
California Institute of Technology
Pasadena, California

GALEX
www.galex.caltech.edu



Messier 101 (The Pinwheel Galaxy)

This image of the nearby spiral galaxy Messier 101 (M101) was taken in two orbits of GALEX on June 20, 2003. This galaxy, also known as the "Pinwheel Galaxy," is 20 million light years from Earth. This picture combines GALEX images taken with the Far UV (blue) and Near UV detectors (red).

The ultraviolet emissions detected by the Far UV detector on GALEX show hot young stars, formed 10 million years ago, concentrated in the tight spiral arms. Older stars, those that formed over 100 million years ago, are brighter in the Near UV image and are spread more evenly across the disk of M101. Because these older stars would also have formed in the tight spiral arms, the older stars trace the movement of the spiral arms over the last 100 million years.

To:
