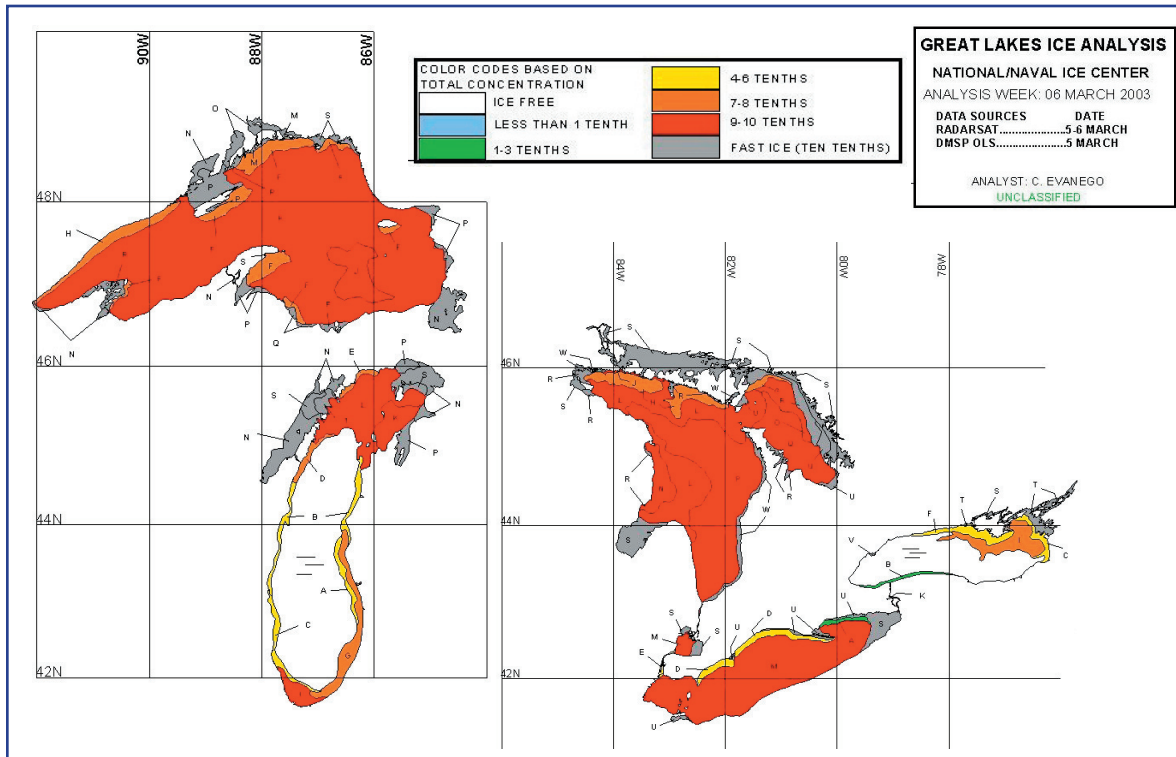


Great Lakes Ice Cover - Winter 2003 compared with GLERL's 30-Winter Ice Cover Climatology



The extent of Great Lakes ice cover on March 6, 2003 (top figure) is much greater than the normal defined by GLERL's 30-winter median ice cover climatology (bottom figure). Lakes Superior, Huron, and Erie all have ice covers in excess of 90%. The last time that happened was during the winter of 1996.

