



US 20070167610A1

(19) **United States**

(12) **Patent Application Publication**
Freimuth

(10) **Pub. No.: US 2007/0167610 A1**

(43) **Pub. Date: Jul. 19, 2007**

(54) **RECOMBINANT SOLUBLE ADENOVIRUS
RECEPTOR**

(76) Inventor: **Paul I. Freimuth**, East Setauket, NY
(US)

Correspondence Address:
**BROOKHAVEN SCIENCE ASSOCIATES/
BROOKHAVEN NATIONAL LABORATORY
BLDG. 475D - P.O. BOX 5000
UPTON, NY 11973 (US)**

(21) Appl. No.: **11/581,689**

(22) Filed: **Oct. 17, 2006**

Related U.S. Application Data

(60) Continuation-in-part of application No. 10/155,282,
filed on May 24, 2002, now abandoned, which is a
division of application No. 09/236,423, filed on Jan.
25, 1999, now Pat. No. 6,395,875.

Publication Classification

(51) **Int. Cl.**
C07K 14/47 (2006.01)
C07H 21/04 (2006.01)
C07K 14/705 (2006.01)
C12P 21/06 (2006.01)
(52) **U.S. Cl.** **530/350**; 435/69.1; 435/320.1;
435/252.3; 536/23.5

(57) **ABSTRACT**

The invention provides recombinant human CAR (coxsackievirus and adenovirus receptor) polypeptides which bind adenovirus. Specifically, polypeptides corresponding to adenovirus binding domain D1 and the entire extracellular domain of human CAR protein comprising D1 and D2 are provided. In another aspect, the invention provides nucleic acid sequences encoding these domains and expression vectors for producing the domains and bacterial cells containing such vectors. The invention also includes an isolated fusion protein comprised of the D1 polypeptide fused to a polypeptide which facilitates folding of D1 when expressed in bacteria. The functional D1 domain finds application in a therapeutic method for treating a patient infected with a CAR D1-binding virus, and also in a method for identifying an antiviral compound which interferes with viral attachment. The invention also provides a method for specifically targeting a cell for infection by a virus which binds to D1.

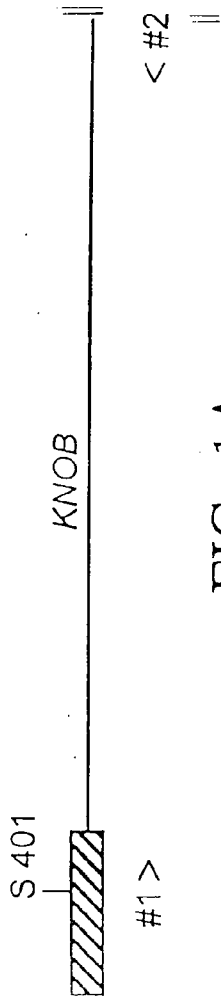


FIG. 1A

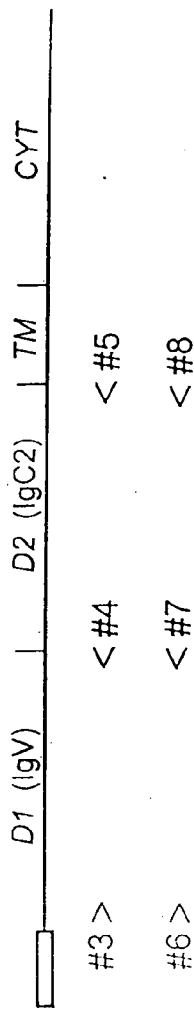


FIG. 1B

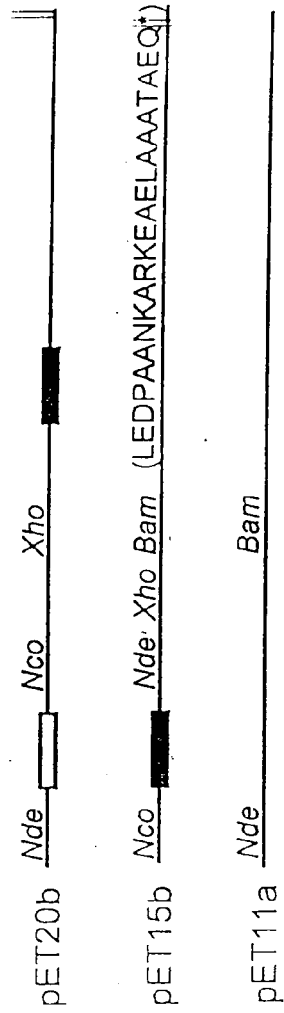


FIG. 1C

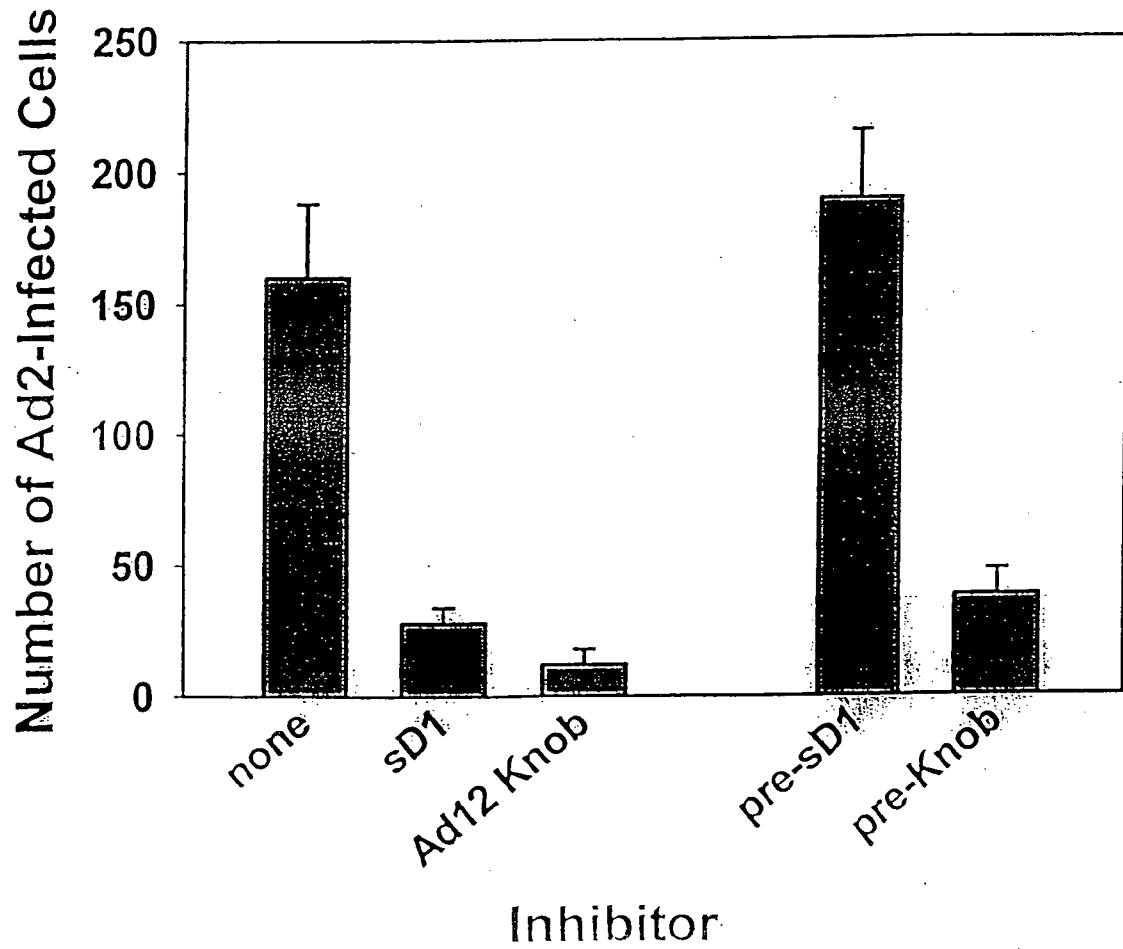


FIG. 2

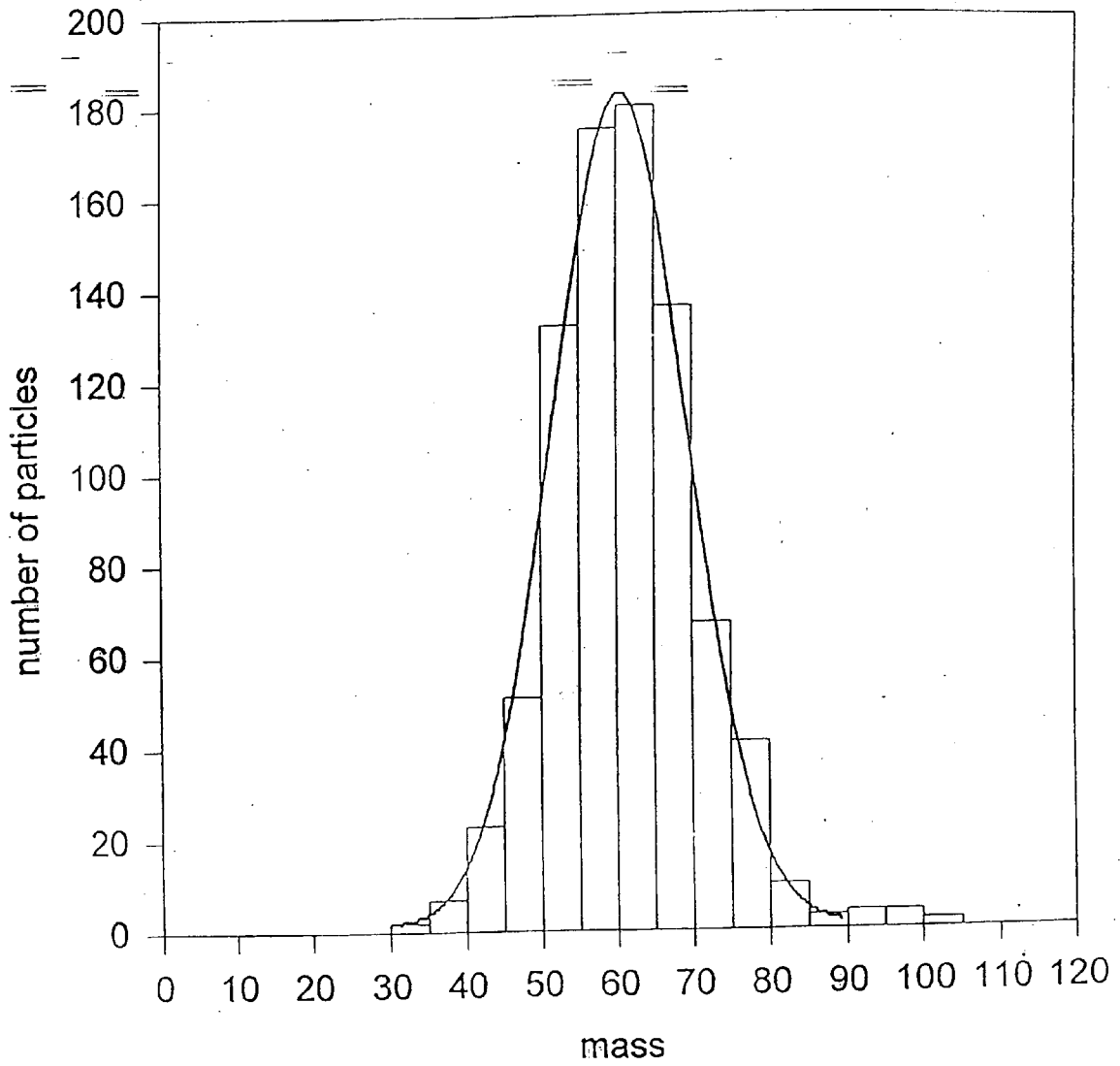


FIG. 3

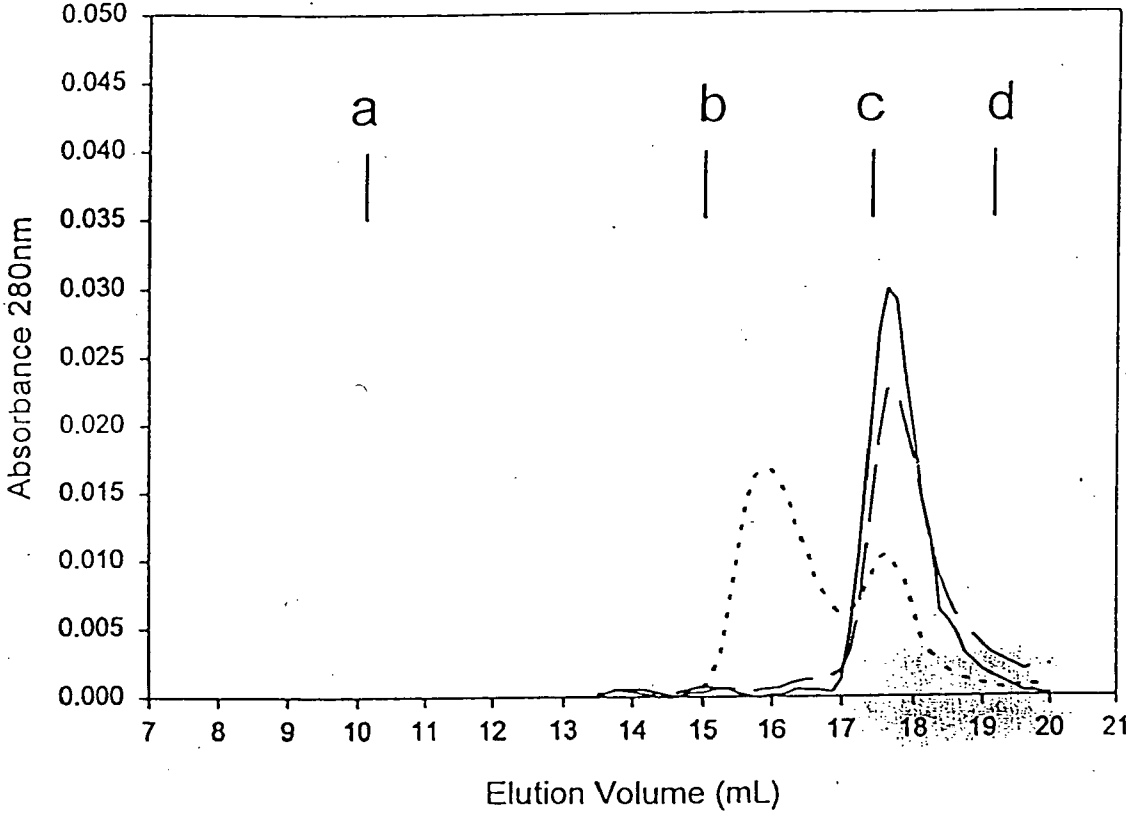


FIG. 4

RECOMBINANT SOLUBLE ADENOVIRUS RECEPTOR

[0001] The present application is a continuation-in-part of copending application Ser. No.10/155,282 filed on Jun. 24, 2004, which is a divisional of application Ser. No. 09/236,423 filed Jan. 25, 1999, now U.S. Pat. No. 6,395,875, and which is incorporated herein by reference.

[0002] This invention was made with Government support under contract number DE-AC02-98CH10886, awarded by the U.S. Department of Energy. The Government has certain rights in the invention.

BACKGROUND OF THE INVENTION

[0003] Characterization of the molecular basis for virus attachment to cells has importance both for understanding virus tropism and for developing agents that inhibit virus binding or alter the specificity of binding. Recently, a cellular receptor for adenovirus type 2 (Ad2) and other closely related serotypes was identified. This receptor, encoded by a single gene on human chromosome 21 (Mayr et al., *J. Virol.* 71: 412-8 (1997)), is a 46 kD glycoprotein which also serves as a receptor for group B coxsackieviruses (CBV) and thus was termed CAR. CAR mRNA is present in varying abundance in many human tissues. A broad tissue distribution of CAR protein expression correlates with the broad tropism of CBV, but subgroup C adenoviruses that are known to bind CAR have a much more restricted tropism limited primarily to the upper respiratory tract. Thus, other factors in addition to receptor availability clearly have important roles in determining adenovirus tropism. Although adenovirus binds to CAR with high affinity (Mayr et al., *J. Virol.* 71: 412-8 (1997); Wickham et al., *Cell.* 73: 309-19 (1993)), virus titers are significantly reduced on cells with down-regulated CAR expression (Freimuth, P., *J. Virol.* 70: 4081-5 (1996)). These results suggest that adenovirus infection in vivo may be restricted to cells which express CAR at levels above a minimum threshold concentration. CAR protein levels are relatively low on the apical surface of differentiated (ciliated) respiratory epithelial cell cultures, which may account for the poor efficiency of adenoviral gene transfer to human lung tissue in vivo.

[0004] Adenovirus binding to CAR results from an interaction between rod-shaped proteins located at the capsid vertices, called viral fibers, and the extracellular region of CAR. The distal, carboxy-terminal end of fiber consists of a globular domain, termed the knob, which has receptor-binding activity. The knob domain of adenovirus type 5 (Ad5) was expressed in *E. coli* as a soluble, trimeric, biologically active protein, and its 3-dimensional structure was determined by x-ray crystallography. The predicted amino acid sequence of CAR suggests a structure consisting of two extracellular domains related to the immunoglobulin IgV and IgC2 domain folds (Bork et al., *J. Mol. Biol.* 242: 309-20 (1994); Bergelson et al., *Science* 275: 1320-3 (1997); Tomko et al., *Proc. Natl. Acad. Sci. USA* 94: 3352-6 (1997)), a single membrane-spanning region, and one carboxy-terminal cytoplasmic domain. Regions of CAR necessary for binding the fiber knob domain have not yet been determined.

SUMMARY OF THE INVENTION

[0005] In one aspect, the present invention relates to an isolated polypeptide comprising an amino acid sequence

which corresponds to adenovirus binding domain D1 of human CAR (coxsackievirus and adenovirus receptor) protein. The present invention also relates to an isolated polypeptide comprising an amino acid sequence which corresponds to extracellular domains D1 and D2 of human CAR protein, which also demonstrates adenovirus binding activity. In other aspects, the invention relates to nucleic acid sequences encoding the D1 and combined D1 and D2 domains. The invention also relates to expression vectors which encode the domains as well as bacterial cells containing such vectors. In a preferred embodiment the D1 polypeptide sequence is fused to a polypeptide sequence which facilitates folding of D1 into a functional, soluble domain when expressed in bacteria.

[0006] In another embodiment, the invention relates to a therapeutic method for treating a patient infected with a virus which binds to D1, such as adenoviruses from subgroups A and C, or coxsackievirus subgroup B. The method involves providing a therapeutic composition comprising D1 and administering it to a patient. Administration is generally topical and to a localized region. Areas of localized infection suitable for treatment include the ocular region, the upper respiratory tract and the gastrointestinal region.

[0007] Also encompassed within the scope of the invention are methods based on the experiments described in the Exemplification section set forth below. These include, for example, methods for identifying a protein and binding domains which bind D1, and also a method for identifying an antiviral compound which interferes with viral attachment. Also included is a method for specifically targeting a cell for infection by a virus which binds to D1. This method has practical use in gene therapy, which often utilizes adenovirus expression vectors.

BRIEF DESCRIPTION OF THE DRAWINGS

[0008] FIG. 1 is a diagrammatic representation of the Ad12 fiber knob and the extracellular domains of human CAR.

[0009] 1a) The Ad12 knob domain (solid line) begins at a conserved motif (amino acids 409-412) and extends to the fiber protein carboxy terminus (Glu 587) (corresponding to nucleotides 30592-31128 of GenBank Accession #X73487). A fragment of Ad12 DNA encoding the entire knob domain and several amino acids from the preceding fiber shaft region (hatched box) was amplified by PCR using forward primer #1 and reverse primer #2. The resulting PCR product was cloned between the NdeI and BamHI sites of pET15b.

[0010] 1b) The human CAR protein consists of an N-terminal signal peptide (open box), two extracellular Ig-related domains (D1, D2), a membrane spanning region (TM) and a cytoplasmic domain (CYT). cDNA fragments encoding D1 and D1/D2 were amplified by PCR using forward primer #3 and reverse primers #4 and #5, respectively. The resulting PCR products were cloned between the NcoI and XhoI sites of pET20b. Similar D1- and D1/D2-encoding cDNA fragments were also amplified by PCR using forward primer #6 and reverse primers #7 and #8. The resulting PCR products were cloned between the NdeI and BamHI sites of pET15b. The NcoI-XhoI fragments were transferred from pET20b into pET15b, a manipulation which resulted in the fusion of the CAR fragment genes in frame to pET15b vector DNA

sequences encoding a 22 amino acid extension at the carboxy-termini of the encoded D1 and D1/D2 peptides.

[0011] 1c) pET vectors for protein expression in *E. coli*. The open and filled boxes represent bacterial signal peptides and hexahistidine tags, respectively. The restriction sites used in this study are shown, and the sequence of the pET15b-encoded 22 amino acid carboxy-terminal extension of (SEQ ID NO: 1) is indicated in single letter code.

[0012] FIG. 2 is a diagrammatic representation of results from experiments measuring the ability of sD1 and Ad12 knob to prevent infection of cells by Ad2. HeLa cell monolayers were infected with about 200 focus-forming units (FFU) per well of Ad2 virus in the presence or absence of sD1 or Ad12 knob. The number of infected cells that resulted is shown (mean \pm SD). Control cultures were pretreated with sD1 and knob (pre-sD1, pre-Knob) and then washed prior to infection.

[0013] FIG. 3 is a diagrammatic representation of data from scanning transmission electron microscopy (STEM) analysis experiments measuring the mass of Ad12 knob.

[0014] FIG. 4 is a diagrammatic representation of data from size exclusion chromatography of knob, CAR domains and knob-CAR complex. 20 μ L aliquots of purified 41.7 μ M CAR D1/D2 (solid line), 40.7 μ M Ad12 knob (dashed line), or a mixture containing 32.4 μ M knob and 30 μ M D1/D2 (dotted line) were chromatographed on a Superose 6 gel filtration column at a flow rate of 0.25 mL/min (all of the concentrations given refer to the monomeric species). The marks noted as a-d show the elution position of size markers: a, earthworm hemoglobin (3.8 Mda); b, dodecameric earthworm hemoglobin (200 kDa); c, bovine serum albumin (67 kDa); and d, cytochrome c (12 kDa).

DETAILED DESCRIPTION OF THE INVENTION

[0015] The present invention is based, in one aspect, on the discovery that the adenovirus-binding activity of human CAR is localized in the amino-terminal IgV-related domain. As detailed in the Exemplification section, the isolated amino-terminal IgV-related domain of CAR (referred to herein as D1) and the entire extracellular region (referred to herein as D1/D2) both have the ability to form complexes with Ad12 knob. Furthermore, the presence of free D1 in soluble form (sD1), inhibits Ad2 virus infection of HeLa cells. Collectively, these observations indicate that D1 is the component of CAR responsible for the adenovirus-binding activity.

[0016] One embodiment of the present invention is an isolated polypeptide that binds adenovirus comprising an amino acid sequence corresponding to the D1 domain of the human CAR protein. The preferred embodiment is an isolated polypeptide comprising residues 20-144 of the pre-CAR sequence (SEQ ID NO: 11), with the amino acid substitutions of L20M and S21G, generated to facilitate cloning. The wild type sequence comprising residues 20-144 of pre-CAR also binds adenovirus, as does a polypeptide sequence comprising residues 20-144 of the pre-CAR sequence which contains one or more conservative amino acid substitutions.

[0017] Another embodiment of the present invention is an isolated polypeptide comprising an amino acid sequence

corresponding to the D1 and D2 domains of the human CAR protein. D1 and D2 are IgV and IgC2 domains and constitute the entire extracellular region of the human CAR protein. The D1/D2 polypeptide demonstrates analogous viral binding activity to the D1 polypeptide described above. The preferred embodiment comprises the amino acid sequence corresponding to residues 20-237 of the human pre-CAR protein (SEQ ID NO: 11), with two amino acid substitutions of L20M and S21G, generated to facilitate cloning. The wild type sequence comprising residues 20-237 of pre-CAR also binds adenovirus, as does a polypeptide sequence comprising residues 20-237 of the pre-CAR sequence which contains one or more conservative amino acid substitutions.

[0018] Another aspect of the present invention is the recombinant DNA molecule that encodes the above described polypeptides. One embodiment is a recombinant DNA molecule comprising a DNA sequence encoding the adenovirus binding domain, D1, of the CAR protein. In the preferred embodiment, this sequence corresponds to nucleotides 117 to 491 of the human CAR cDNA (SEQ ID NO: 10). Another embodiment is the recombinant DNA molecule comprising the entire extracellular region, D1 and D2, of the CAR protein. In the preferred embodiment, this DNA sequence corresponds to nucleotides 117 to 770 of the human CAR cDNA sequence (SEQ ID NO: 10).

[0019] The isolated polypeptides of the present invention can be produced *in vitro* by inserting the corresponding coding DNA sequences described above into an expression vector (e.g. a prokaryotic or eukaryotic expression vector). Such vectors contain all necessary regulatory signals to promote the expression of a DNA sequence of interest. The use of such vectors is a matter of routine experimentation for one of average skill in the art. The expression vector with the inserted DNA sequence of the present invention is then introduced into an appropriate cell under conditions favorable for expression. In the preferred embodiment, the cell is prokaryotic and is a bacteria cell. However, the proteins can also be expressed in eukaryotic cells by similar methods, utilizing eukaryotic expression vectors. Such cells can be used to study the biological properties of the protein in a controlled cell system or, alternatively, for the purpose of protein production and purification.

[0020] Isolation of the above proteins from the bacteria is achieved through routine purification procedures. In one embodiment, the CAR coding sequences are engineered downstream of sequences encoding hexahistidine, to produce the CAR fragment with an N-terminal hexahistidine tag. As described in the Exemplification section of this application, the D1 and D1/D2 polypeptides produced by this method are insoluble when generated in *E. coli*. However, functional products are obtained when the polypeptides are refolded from urea-solubilized inclusion bodies and purified by anion exchange chromatography. Following purification, the tag is optionally cleaved off by digestion with thrombin to yield the intact CAR fragment.

[0021] In the preferred embodiment, the D1 polypeptide is expressed in the form of a fusion protein which results in the production of D1 domain that is soluble and functional when exogenously expressed in *E. coli* at 18 $^{\circ}$ C. As described in the Exemplification section of the present application, D1 engineered to have a short C-terminal amino acid extension is partially soluble when expressed in *E. coli*, and also

retains virus binding activity. Without being bound by theory, the fused extension is thought to enable the IgV domain to fold into a soluble structure within *E. coli* cells. Functional D1 isolated in this manner is preferred for use over D1 which is produced as insoluble in *E. coli* and resolubilized because resolubilized proteins can contain non-functional structural isomers.

[0022] The fusion protein is generated by expression from a recombinant DNA molecule containing the D1 polypeptide coding sequence, described above, fused in frame to a DNA sequence encoding a polypeptide sequence which facilitates folding of the D1 polypeptide into a functional, soluble domain. This recombinant DNA molecule is then inserted into a prokaryotic expression vector which is then transformed into a bacteria cell, under conditions appropriate for expression. In one embodiment the fusion is downstream, resulting in a C-terminal extension. In a preferred embodiment, the D1 coding sequence is fused in frame to a downstream DNA sequence encoding the 22 residue polypeptide LEDPAANKARKEAELAAATAEQ (SEQ ID NO: 1) to generate a C-terminal extension. The isolated polypeptide that results from expression of this fused sequence comprises an amino acid sequence corresponding to amino acids 20-144 of human pre-CAR protein, and is herein referred to as sD1. In the preferred embodiment, the isolated polypeptide resulting from expression further comprises substitutions L20M and S21G.

[0023] The present invention is also based, in part, on the discovery that free sD1 polypeptide functions as an antiviral agent by inhibiting viral infection of a cell. Results presented in the Exemplification section of this application indicate that free sD1 functions to inhibit cell infection by viruses that bind D1 of human CAR. As detailed in the Exemplification, both Ad 2 and Ad 12 (representative of adenovirus subgroup C and A, respectively) bind D1. These results, combined with the earlier observation that adenovirus competes for cell binding sites with a subgroup B coxsackievirus, indicate that members of coxsackievirus subgroup B also bind D1 (Lonberg-Holm et al., *Nature* 259: 679-81 (1976); Bergelson et al., *Science* 275: 1320-3 (1997); Tomko et al., *Proc. Natl. Acad. Sci. USA* 94: 3352-6 (1997)).

[0024] One embodiment of the present invention is a method for the treatment of a patient infected with a virus characterized as binding D1 of human CAR protein. The method comprises providing a therapeutic composition of D1 polypeptide and administering it to the host. This method can be used to treat any viral infection involving a viral agent that binds to D1 including, but not limited to, adenovirus subgroup A, adenovirus subgroup C, and coxsackievirus subgroup B.

[0025] Effective therapeutic compositions will provide a sufficient amount of D1 polypeptide to affect binding of the virus to the extent that progression or spread of the infection is inhibited. In the preferred embodiment, the therapeutic composition comprises the D1 polypeptide in a stable, soluble form. For effective therapy, administration of the composition is targeted to the infected area, preferably through topical administration to a localized infection. Adenoviruses commonly infect the upper respiratory tract, the ocular region, and the gastro-intestinal tract, whereas CBV has a broad tissue tropism. A therapeutic composition may take the form of eyedrops, an inhalant fluid, or an

ingestible composition, for the treatment of an ocular, upper respiratory, or gastro-intestinal infection, respectively.

[0026] The present invention also encompasses several other methods that utilize the above described compositions. In addition to using D1 polypeptide directly in the therapeutic treatment of viral infection, the isolated polypeptide can be exploited experimentally to identify and characterize molecules which bind CAR through the D1 domain, to study the infection process, and to develop new therapeutics. One such embodiment is a method of identifying molecules and portions thereof involved in binding to CAR through the D1 domain.

[0027] Experiments presented in the Exemplification section of this application indicate that CAR is bound by adenovirus-encoded proteins involved in cellular attachment. Evidence indicates that other viruses also bind CAR at the D1 domain in the infection process. In addition to this role as a receptor in viral infection, CAR is likely bound by a natural ligand in a healthy individual. Identification of D1 as the domain through which viruses attach to CAR, allows its use in binding assays in the identification and further characterization of these molecules.

[0028] Various binding assays can be used to identify and characterize D1 binding molecules. In vitro binding assays yield highly quantitative binding data, and have the advantage of being performed under extremely controlled conditions. In vivo binding assays are performed under physiological conditions and, while often more qualitative than quantitative, can provide physiologically relevant data.

[0029] In one embodiment, the molecule which binds D1 is an adenovirus knob protein. Presumably, the residues of knob that form the interface with CAR are conserved in adenovirus serotypes which bind to CAR, and different in serotypes which do not. The Ad2, representative of subgroup C, and Ad12, representative of subgroup A, knob amino acid sequences are only 43% identical, yet both viruses use CAR as the major attachment receptor. The importance of these conserved amino acids to CAR binding are readily testable using the polypeptide sequences disclosed in the present application. Along the same lines, evidence indicates that subgroup B adenovirus (e.g. types 3 and 7) do not bind the same cell receptors as subgroup A and C (Defer et al., *J Virol.* 64: 3661-73 (1990)); Regions of subgroup B and C knob sequences that differ radically may define receptor binding specificity (Xia et al., *Structure.* 2: 1259-70 (1994)).

[0030] In the preferred embodiment, an in vitro binding assay system is used to determine if alterations in viral knob proteins affect binding to D1 or D1/D2 polypeptides. These alterations include truncations and internal deletions of D1 binding knob proteins. Additionally, chimeras of D1 binding and non-D1 binding knob proteins can be tested for D1 binding, to determine the influence of defined knob protein regions on binding specificity. As experiments progress, subtle alterations made in the identified binding regions (e.g. amino acid substitutions) will define the residues involved in D1 binding. One of average skill in the art will recognize that the results of such studies can be applied to the production of recombinant adenovirus knob proteins and/or D1 proteins that possess distinct binding specificities.

[0031] Identification of D1 as the virus binding fragment also facilitates structural determination of the virus attach-

ment proteins (e.g. Ad 12 knob, complexed to D1 or D1/D2). Such studies facilitate the identification of residues that form the receptor-knob interface.

[0032] The methods used in the study of knob binding are equally applicable to identifying molecules and portions thereof involved in the attachment of viruses other than adenovirus (e.g. coxsackievirus and natural ligands to CAR). One of skill in the art will recognize that information gathered from binding studies will usefully contribute to related applications of the present invention.

[0033] The compositions of the present invention can also be used in binding assays to screen for antiviral compounds which interfere specifically with the interaction between the D1 polypeptide of the human CAR protein and a viral attachment protein which binds to the D1 polypeptide. The demonstrated binding of D1 to viral attachment proteins, as detailed in the Exemplification, can be used as an assay for a primary step in virus infection. Compounds found to interfere with viral binding will have valuable therapeutic and experimental potential as antiviral agents.

[0034] In one embodiment, purified viral attachment protein is contacted with purified sD1 in an in vitro binding assay (e.g. ELISA type) in the presence and absence of a candidate compound. Decreased binding of D1 to the viral protein indicates the compound possesses anti-viral properties. Both in vitro and in vivo binding assays utilizing various detection methods can be used in such a screen. The performance of such binding assays is within the capabilities of one of average skill in the art. In the preferred embodiment, the viral attachment protein used in the screen is an adenovirus knob protein (e.g. Ad2 or Ad12).

[0035] The present invention also provides methods to specifically target a cell for viral infection by redirecting viral binding to a predetermined surface protein of the targeted cell. This can be accomplished by using a D1 containing adaptor bridge which binds to the virus and also binds to the surface protein. Because adenovirus infection in vivo is restricted to cells which express CAR at levels above a minimum threshold concentration, the use of a highly expressed surface protein is expected to produce a higher rate of infection of the target cell than will a less prevalent surface protein. In one embodiment, the adaptor bridge is generated by fusing D1 to single chain antibodies directed towards antigens expressed on the target cells (e.g. tumor cells). The virus is then contacted with the adaptor bridge under conditions appropriate for binding of the virus to the D1 portion of the adaptor bridge, to produce a virus-adaptor bridge complex. The target cell is then contacted with the virus-adaptor bridge complex under conditions appropriate for binding of the antibody portion of the adaptor bridge to the target cell. Contact of the virus-adaptor bridge complex with the target cell can take place via topical application or systemic administration. Upon binding of the virus-adaptor bridge complex to the target protein, the target cell becomes susceptible to infection by the attached virus. In one embodiment, the virus is an adenovirus. However, the virus can be any virus that binds D1, including a virus modified for therapeutic purposes (e.g. by recombinant engineering).

[0036] Adenovirus-based DNA expression vectors and delivery systems are highly utilized systems for gene delivery into animal cells, including in vitro cell culture and in vivo delivery (e.g. gene therapy). The use of specific tar-

geting of adenoviruses allows the development of either a wider spectrum of target cells or conversely a narrower range of delivery, the latter improvement being beneficial to therapies such as chemotherapy aimed at specific elimination of diseased tissue. One skilled in the art can envision how information gathered in the above experiments regarding the binding sites involved in Adenovirus binding to D1 can be exploited for therapeutic purposes to generate recombinant adenovirus and D1 with highly specific binding recognition.

[0037] The present invention also provides methods for treating a patient with an infection caused by a virus that binds to human CAR. Experiments detailed in the Exemplification indicate that free Ad12 knob inhibits infection of HeLa cells by Ad2 virus. These observations indicate that free adenovirus Ad12 knob protein administered in a therapeutic composition can prevent the spread of an infection resulting from a virus that binds D1. The preparation and administration of effective therapeutic compositions comprising the Ad 12 knob protein are similar to that described above for D1.

Exemplifications

[0038] Expression and purification of CAR extracellular fragments.

[0039] To localize the Ad-binding activity of CAR, fragments corresponding the amino-terminal CAR IgV domain (D1) and the combined IgV+IgC2 domains (D1/D2) were expressed in *E. coli*. A cDNA fragment coding for D1 (FIG. 1b) was cloned into pET20b, an expression vector designed to export expressed proteins into the *E. coli* periplasmic space (FIG. 1c), but synthesis of D1 (expected molecular weight of about 16 kDa) was undetectable after 3 hours of induction. No bands corresponding to D1 were detected by SDS-PAGE analysis of whole cell lysates. When the initial construct was enlarged to include the downstream IgC2 domain (FIG. 1b), however, the resulting D1/D2 polypeptide was overexpressed and ran as a closely-spaced doublet on SDS-PAGE, which is characteristic of some periplasmic proteins such as alkaline phosphatase and results from partial hydrolysis of the signal peptide. These results imply that the amino-terminal domain (D1) specified by the initial construct also entered the secretory pathway, but probably was rapidly degraded in the periplasmic space. The D1/D2 protein fragment was not soluble in *E. coli* cells grown at temperatures ranging from 18-37° C.

[0040] To determine if D1 could be stabilized by restricting its synthesis to the cytoplasm, the D1-encoding PCR product was transferred as an NcoI-XhoI restriction fragment from pET20b into pET15b (FIG. 1c). Because of restriction site differences between these 2 expression vectors, the CAR protein fragment specified by this construct (pET15b-sD1) had a vector-encoded 22-amino acid carboxy-terminal extension and it lacked the amino-terminal hexahistidine tag that is normally attached to proteins expressed from pET15b (FIG. 1c). The resulting polypeptide was expressed at moderate abundance at 37° C., but was insoluble. When the cultures were induced at 18° C., however, a significant amount of D1 was contained in the soluble fraction of cell lysates. SDS-PAGE of the lysate and fractions revealed a band corresponding to the 16 kDa molecular weight of D1 present in all fractions. The larger CAR cDNA

fragment encoding D1/D2 also was transferred from pET20b into pET15b, but none of the expressed protein was detected in the soluble fraction of cell lysates. SDS-PAGE analysis of cell lysate and fractions revealed bands corresponding to the molecular weight of about 27 kDa in both the whole cell lysate and insoluble fraction, but absent in the soluble fraction. Soluble D1 (sD1) was partially purified by ammonium sulfate precipitation and ion-exchange chromatography.

[0041] To determine if removal of the vector-encoded carboxy-terminal extension would increase the yields of soluble CAR fragments produced in *E. coli*, cDNA fragments encoding D1 and D1/D2 were amplified with new primer sets (primers #6 and #7 or #6 and #8, FIG. 1b) that introduced downstream stop codons and also fused the proteins to the vector-encoded amino-terminal hexahistidine tag. Both CAR fragments were overexpressed, but were insoluble at culture growth temperatures between 18-37° C., suggesting that the carboxy-terminal extension specified by the initial pET15b-sD1 construct may enable the IgV domain to fold into a soluble structure within *E. coli* cells.

[0042] The insoluble his-tagged CAR fragments were both refolded from urea-solubilized inclusion bodies and were purified to apparent homogeneity by anion exchange chromatography. To confirm that D1 solubility within intact *E. coli* cells depends on the presence of the 22 amino acid C-terminal extension rather than the absence of the N-terminal hexahistidine leader, the D1-encoding insert (PCR product of primers #6 and #7, FIG. 1b) was transferred from pET15b into pET11a as an NdeI-BamHI fragment (FIG. 1c). D1 was overexpressed in pET11a-D1-transformed cells, but was completely insoluble, as determined by comparison of whole cell lysate to soluble cell fractions by SDS-PAGE analysis, confirming that the C-terminal 22 amino acid extension specified by pET15b increases D1 solubility.

[0043] Biological activity of CAR extracellular fragments.

[0044] Refolded D1 and D1/D2 CAR fragments were examined for the ability to form specific complexes with recombinant fiber knob from Ad12. It was previously reported that infection of HeLa cells by Ad12 virus is inhibited by purified native fiber protein from Ad2, suggesting that CAR serves as the major attachment receptor for both Ad2 and Ad12. A fragment of Ad12 DNA coding for the fiber knob domain (FIG. 1a) was cloned in pET15b. Ad12 knob was abundantly expressed following IPTG induction of cultures at 37° C., but accumulated entirely within the insoluble fraction of cell lysates. When cultures were induced at 24° C., however, the majority of knob was in the soluble fraction. The knob was purified by ammonium sulfate precipitation and anion exchange chromatography, and the his-tag was removed by digestion with thrombin. A sample of purified Ad12 knob, visualized by SDS-PAGE, displayed as a single band at the expected molecular weight. Ad12 knob was then incubated with the his-tagged D1 or D1/D2 in the presence of purified Ad2 hexon protein (included as a specificity control). The mixtures were then adsorbed to Ni-NTA beads to capture the his-tagged CAR fragments. In control incubations lacking the CAR fragments, Ad12 knob and Ad2 hexon both failed to bind to Ni-NTA beads, demonstrated by an absence of bands upon SDS-PAGE analysis of bead eluate. In the presence of either D1 or D1/D2, however, Ad12 knob bound to Ni-NTA beads

and could be easily detected in bead eluate by SDS-PAGE analysis, whereas Ad2 hexon did not. This suggested that the CAR IgV domain (D1) specifically binds the Ad12 knob. This conclusion was supported by the results of an experiment to test whether his-tagged Ad12 knob and sD1 form specific complexes. Purified, his-tagged Ad12 knob was mixed with a partially purified preparation of sD1 and incubated briefly to allow protein complexes to form. The mixture was then applied to a column of Ni-NTA beads, unbound proteins were washed from the column, and the bound fraction was eluted with EDTA. SDS-PAGE analysis of the bead eluate revealed the presence of Ad12 knob and sD1, seen as two distinct bands at their expected molecular weights. Thus, D1 alone is sufficient for binding to the Ad12 knob.

[0045] To determine if the binding activities of the recombinant Ad12 knob and the, CAR IgV domain have the same specificities as their native fiber and CAR counterparts, the ability of Ad12 knob and sD1 to inhibit Ad2 infection of HeLa cells was tested. As shown in FIG. 2, Ad2 infectivity was significantly inhibited when either sD1 or Ad12 knob was included in the virus inoculum during virus adsorption. No inhibition of infection was observed in cell cultures that were pretreated with sD1 and then washed prior to virus adsorption, indicating that the inhibitory activity of sD1 does not result from a cytotoxic effect on cells. Cells similarly pretreated with Ad12 knob, however, were still partially refractory to infection by Ad2 virus. This most likely results from incomplete dissociation of knob from the CAR receptors on cells rather than a cytotoxic effect. Thus, the binding specificity of native fiber and CAR is reconstituted in recombinant Ad12 knob and sD1.

[0046] Physical characteristics of Ad12 knob and CAR domains.

[0047] Analysis of boiled and untreated samples of Ad12 knob by SDS PAGE showed bands of 20 and 60 kDa, respectively, suggesting that, like the Ad5 fiber knob, the Ad12 knob is trimeric. To confirm this result, a sample of Ad12 knob was examined in the Brookhaven scanning transmission electron microscope (STEM), which measures the mass/unit length of macromolecules. In good agreement with the PAGE results, STEM analysis showed the Ad12 knob has a mass of 60.6 kDa (FIG. 3).

[0048] The Ad12 knob and the refolded D1 and D1/D2 CAR domains were subjected to gel filtration chromatography to determine their native sizes (FIG. 4). In all three cases, the proteins eluted as symmetric peaks in an elution volume that was independent of the protein concentration (1-500 µM monomer). D1 consistently eluted as a ~30 kDa species while both D1/D2 and knob eluted as ~60 kDa species. Based upon the primary amino acid sequences of these proteins, the gel filtration data suggest that both D1 and D1/D2 are dimers while Ad-12 knob is a trimer. When D1/D2 and knob were mixed together at equimolar (monomer:monomer) ratios, two peaks were observed in the elution profiles, a low molecular weight species eluting at a position corresponding to free Ad12 knob or D1/D2 and a higher molecular weight species eluting at a molecular mass of ~100 kDa. Fractions from the two peaks were analyzed by SDS-PAGE, which revealed that the high molecular weight peak corresponded to the knob-D1/D2 complex, while the lower molecular weight species was free D1/D2.

Similar results were observed for complexes of knob and D1, which eluted at ~80 kDa.

Methods of the Invention

[0049] Expression and purification of Ad12 knob. A DNA fragment encoding the entire Ad12 fiber knob domain and several flanking amino acids from the fiber shaft (amino acids 401-587) (corresponding to nucleotides 30571-31128 of GenBank Accession #X73487) was amplified from viral DNA by PCR (30 cycles of 94° C./30 sec, 55° C./40 sec, 72° C./60 sec) using primers #1, CATATGAGCAACACTC-CATACG (SEQ ID NO: 2), and #2, GGATCCTTATTCT-TGGGTAATGT (SEQ ID NO: 3), (FIG. 1a). The resulting PCR product was cloned between the NdeI and BamHI sites of pET15b (Novagen) and transformed into strain BL21-DE3 (Novagen) for protein expression. Overnight cultures grown in LB broth containing 150 mg/L penicillin G (Sigma) were diluted 100-fold into fresh LB-penicillin broth and grown at 37° C. until midlog phase (OD of 0.8 at 600 nm) at which time they were chilled to 24° C. and adjusted to 50 µM IPTG (isopropyl β-D thiogalactopyranoside) to induce knob expression. After shaking (250 rpm) overnight at 24° C., the cells were collected by centrifugation, resuspended in 10% of the original culture volume of STE (10 mM Tris-HCl pH 8.0, 100 mM NaCl, 1 mM EDTA (ethylenediaminetetraacetic acid)) containing 100 µg/ml lysozyme, and subjected to 3 cycles of freezing and thawing. The viscous cell lysate was then sonicated and cleared by centrifugation at 25,000×g for 10 min. Knob was precipitated from the supernatant by addition of solid ammonium sulfate to 35% saturation (25°C), dialyzed against several changes of 10 mM Tris-HCl (pH 7.5) and passed over a column of DEAE-cellulose (DE52, Whatman) equilibrated in the same buffer. Knob was recovered from the flow-through fractions essentially free of contaminating *E. coli* proteins and nucleic acids, and was further purified by Ni-NTA affinity chromatography according to the manufacturer's instructions (Qiagen). About 100 mg of purified Ad12 knob was obtained from one liter of bacterial culture.

[0050] Expression and purification of CAR protein fragments. cDNA fragments encoding the human CAR extracellular domains (D1 and D1/D2, FIG. 1b) were amplified by RT-PCR of total RNA from a mouse A9 cell line transformed with multiple copies of the cloned human CAR gene. First strand cDNA synthesis was primed by oligo-dT. Primer #3: CCATGGGTATCACTACTCCTGAAGAGA (SEQ ID NO: 4), primer #4 CTCGAGCGCACCTGAAG-GCTTA (SEQ ID NO: 5), complementary to nucleotides 476-491 of SEQ ID NO: 10 plus an XhoI restriction site, and primer #5: CTCGAGTGAAGGAGGGACAAC (SEQ ID NO: 6), complementary to nucleotides 744-758 of SEQ ID NO: 10 plus an XhoI site, were designed for cloning D1- and D1/D2-encoding PCR products between the NcoI and XhoI sites of expression vector pET20b (Novagen). In Primer #3: [CCATGGGTATCACTACTCCTGAAGAGA (SEQ ID NO: 4)], the first 6 nucleotides (CCATGG) provide an NcoI restriction endonuclease site. In addition to providing an NcoI site for convenience in cloning, the third nucleotide of the sequence, (A), corresponds to nucleotide 117 of SEQ ID NO: 10 and converts the codon TTG for L20 to a codon for Met (ATG) to provide the substituted D1 polypeptide having the L20M substitution and the sixth nucleotide (G), which corresponds to nucleotide 120 of SEQ ID NO: 10, converts the codon AGT for S21 to a codon for Gly (GGT) to provide

the substituted D1 polypeptide having the S21G substitution. The remaining nucleotides of primer #3 correspond to nucleotides 121-141 of SEQ ID NO: 10. Thus the first 6 nucleotides of primer #3 provide an NcoI restriction site and in doing so, convert codons for Leu (amino acid 20 of CAR) and Ser (amino acid 21 of CAR) to codons for Met and Gly, respectively.

[0051] The PCR cycling program was identical to that used for Ad12 knob. These same PCR products were also cloned into pET15b as NcoI-XhoI restriction fragments, and thus lacked the vector-encoded hexahistidine tag, and each had an additional 22 amino acid-long carboxy-terminal extension encoded by vector sequences downstream of the XhoI site (FIG. 1c).

[0052] Another set of primers (#6-#8, FIG. 1b) was designed to adapt the CAR PCR products for cloning between the pET15b NdeI and BamHI restriction sites, which provides for attachment of the amino-terminal hexahistidine tag to the expressed proteins. In Primer #6: CATATGGGTATCACTACTC (SEQ ID NO: 7), the first 6 nucleotides provide an NdeI restriction site (CATATG) and, like primer #3, provide a substitute codon, ATG for Met to replace L20 and the next 3 nucleotides, GGT, provide the codon for Gly to replace S21. The remaining nucleotides of primer #6 correspond to nucleotides 121-132 of SEQ ID NO: 10. Primer #7: GGATCCTACGCACCTGAAGGCT (SEQ ID NO: 8) is complementary to nucleotides 478-493 SEQ ID NO: 10 plus a BamHI restriction site and primer #8: GGATCCTATCCAGCTTTATTTGAAG (SEQ ID NO: 9), is complementary to nucleotides 754-770 of SEQ ID NO: 10 plus a BamHI site. Stop codons were built into the reverse primers to avoid synthesis of the CAR fragments with the vector-encoded carboxy-terminal extensions.

[0053] The procedure used for expression of the initial pET15b-D1 construct (PCR product from primers #3 and #4) was similar to that described above for Ad12 knob except that the culture was induced at 18° C. Soluble D1 (sD1), produced from the pET15b NcoI/XhoI construct, was precipitated from cleared cell lysates by ammonium sulfate precipitation (35-60% cut, 25°C) and was partially purified by anion exchange chromatography (DE52) in 10 mM Tris-HCl buffer (pH 7.5). About 5 mg of partially purified sD1 was recovered from one liter of bacterial culture. The hexahistidine-tagged CAR fragments expressed from the second set of pET15b constructs (using primers #6-#8, FIG. 1b) were insoluble, but were recovered from inclusion bodies. Cultures were induced at 37° C., and cleared lysates were prepared as described above. After centrifugation, the supernatant was discarded, the pellet was washed several times in STE containing 0.1% NP40, dissolved in 8 M urea/50 mM β-mercaptoethanol/50 mM Tris-HCl (pH 9.2) (20 ml per liter of initial culture), and then diluted with 15 volumes of 20 mM Tris-HCl (pH 8.0). The slightly hazy solution was passed through a 10 ml bed volume of DEAE-Sephacose Fast Flow (Pharmacia) equilibrated in 20 mM Tris-HCl (pH 8.0). Approximately half of the bound CAR fragments eluted with 50 mM NaCl and were essentially pure. The remaining bound CAR eluted with 300 mM NaCl along with contaminating *E. coli* proteins, and was discarded.

[0054] Export of CAR D1 and D1/D2 into the *E. coli* periplasm. Mid-log phase cultures of strain BL21-DE3 cells

-continued

<223> OTHER INFORMATION: Description of Artificial Sequence: Cloning
Primer

<400> SEQUENCE: 2

catatgagca acactccata cg 22

<210> SEQ ID NO 3
<211> LENGTH: 23
<212> TYPE: DNA
<213> ORGANISM: Artificial Sequence
<220> FEATURE:
<223> OTHER INFORMATION: Description of Artificial Sequence: Cloning
Primer

<400> SEQUENCE: 3

ggatccttat tcttgggtaa tgt 23

<210> SEQ ID NO 4
<211> LENGTH: 27
<212> TYPE: DNA
<213> ORGANISM: Artificial Sequence
<220> FEATURE:
<223> OTHER INFORMATION: Description of Artificial Sequence: Cloning
Primer

<400> SEQUENCE: 4

ccatgggtat cactactcct gaagaga 27

<210> SEQ ID NO 5
<211> LENGTH: 22
<212> TYPE: DNA
<213> ORGANISM: Artificial Sequence
<220> FEATURE:
<223> OTHER INFORMATION: Description of Artificial Sequence: Cloning
Primer

<400> SEQUENCE: 5

ctcgagcgca cctgaaggct ta 22

<210> SEQ ID NO 6
<211> LENGTH: 21
<212> TYPE: DNA
<213> ORGANISM: Artificial Sequence
<220> FEATURE:
<223> OTHER INFORMATION: Description of Artificial Sequence: Cloning
Primer

<400> SEQUENCE: 6

ctcgagttaa ggaggacaa c 21

<210> SEQ ID NO 7
<211> LENGTH: 19
<212> TYPE: DNA
<213> ORGANISM: Artificial Sequence
<220> FEATURE:
<223> OTHER INFORMATION: Description of Artificial Sequence: Cloning
Primer

<400> SEQUENCE: 7

catatgggta tcactactc 19

<210> SEQ ID NO 8
<211> LENGTH: 22
<212> TYPE: DNA

-continued

```

<213> ORGANISM: Artificial Sequence
<220> FEATURE:
<223> OTHER INFORMATION: Description of Artificial Sequence: Cloning
Primer

<400> SEQUENCE: 8
ggatcctacg cacctgaagg ct 22

<210> SEQ ID NO 9
<211> LENGTH: 25
<212> TYPE: DNA
<213> ORGANISM: Artificial Sequence
<220> FEATURE:
<223> OTHER INFORMATION: Description of Artificial Sequence: Cloning
Primer

<400> SEQUENCE: 9
ggatcctatc cagctttatt tgaag 25

<210> SEQ ID NO 10
<211> LENGTH: 2434
<212> TYPE: DNA
<213> ORGANISM: Homo sapiens

<400> SEQUENCE: 10
gaattcccag gagcgagagc cgcctacctg cagccgccgc ccacggcagc gcagccacca 60
tggcgctcct gctgtgcttc gtgctcctgt gcggagtagt ggatttcgcc agaagtttga 120
gtatcactac tcctgaagag atgattgaaa aagccaaagg ggaaactgcc tatctgccgt 180
gcaaatttac gcttagtccc gaagaccagg gaccgctgga catcgagtgg ctgatcac 240
cagctgataa tcagaagggt gatcaagtga ttatattata ttctggagac aaaatztatg 300
atgactacta tccagatctg aaaggccgag tacattttac gagtaatgat ctcaaatctg 360
gtgatgcatc aataaatgta acgaatttac aactgtcaga tattggcaca tatcagtgca 420
aagtgaaaaa agctcctggt gttgcaata agaagattca tctggtagtt cttgtaagc 480
cttcaggtgc gagatgttac gttgatggat ctgaagaaat tggaagtgc ttttaagataa 540
aatgtgaacc aaaagaaggt tcacttccat tacagtatga gtggcaaaaa ttgtctgact 600
cacagaaaaa gcccaactca tggtagcag aaatgacttc atctgttata tctgtaaaaa 660
atgcctcttc tgagtactct gggacatata gctgtacagt cagaaacaga gtgggctctg 720
atcagtgctt gttgctcta aacgttctcc ctcttcaaa taaagctgga ctaattgcag 780
gagccattat aggaactttg cttgctctag cgctcattgg tcttatcatc ttttgctgtc 840
gtaaaaagcg cagagaagaa aaatatgaaa aggaagtcca tcacgatatc agggaagatg 900
tgccacctcc aaagagccgt acgtccactg ccagaagcta catcggcagt aatcattcat 960
ccctggggtc catgtctcct tccaacatgg aaggatatto caagactcag tataaccaag 1020
taccaagtga agactttgaa cgcactcttc agagtccgac tctcccacct gctaaggtag 1080
ctgcccttaa tctaagtcca atgggtgcga ttctctgatg gattccagca cagagcaagg 1140
atgggtctat agtatagagc ctccatatgt ctcatctgtg ctctccgtgt tcctttcctt 1200
tttttgatat atgaaaacct attctggtct aaattgtgtt actagcctca aaatacatca 1260
aaaaataagt taatcaggaa ctgtacggaa tatattttta aaaatttttg tttggttata 1320
tcgaaatagt tacaggcact aaagttagta aagaaaagtt taccatctga aaaagctgga 1380

```

-continued

```

ttttctttaa gaggttgatt ataaagtttt ctaaatttat cagtacctaa gtaagatgta 1440
gcgctttgaa tatgaaatca taggtgaaga catgggtgaa cttacttgca taccaagttg 1500
atacttgaat aacctctga aagtgttact tgatcatttt taccattatt tttaggatgt 1560
gtatttcatt tatttatggc ccaccagtct cccccaatt agtacagaaa tatccatgac 1620
aaaattactt acgtatgttt gtacttggtt ttacagctcc ttgaaaact ctgtggttg 1680
aatatctcta aaaacataga aaacactaca gtggtttaga aattactaat tttacttcta 1740
agtcattcat aaacctgtgc tatgaaatga cttcttaaat atttagttga tagactgcta 1800
caggtaatag ggacttagca agctctttta tatgctaaag gagcatctat cagattaagt 1860
tagaacattt gctgtcagcc acatattgag atgacactag gtgcaatagc agggatagat 1920
tttgttggtg agtagtctca tgccttgaga tctgtggtgg tcttcaaaa ggtggccagc 1980
cagatcaagg atgtagtatc tcatagtcc caggtgatat ttttcttatt agaaaaatat 2040
tataactcat ttgttggttg acacttatag attgaaatct cctaatttat tctaaatctt 2100
aagtgttctt ttggtccag tgctttatgt tgtgtgtgtt tttggatggt gttacatatt 2160
atatgttcta gaaacatgta atcctaaatt taccctcttg aatataatcc ctggatgata 2220
ttttttatca taaatgcaga ataatacaat acattttaag caagttaagt gtcctccatc 2280
aattctgtat tccagacttg ggaggatgta cagttgctgt tgtgtgatca aacatgtctc 2340
tgtgtagttc cagcaaatca agctgagctt tgaaaaagtt tgtcttagtt ttgtgaaggt 2400
gatttattct tagaaaaaaa aaaaaaaaaa aaaa 2434

```

```

<210> SEQ ID NO 11
<211> LENGTH: 365
<212> TYPE: PRT
<213> ORGANISM: Homo sapiens

```

<400> SEQUENCE: 11

```

Met Ala Leu Leu Leu Cys Phe Val Leu Leu Cys Gly Val Val Asp Phe
1           5           10          15
Ala Arg Ser Leu Ser Ile Thr Thr Pro Glu Glu Met Ile Glu Lys Ala
20          25          30
Lys Gly Glu Thr Ala Tyr Leu Pro Cys Lys Phe Thr Leu Ser Pro Glu
35          40          45
Asp Gln Gly Pro Leu Asp Ile Glu Trp Leu Ile Ser Pro Ala Asp Asn
50          55          60
Gln Lys Val Asp Gln Val Ile Ile Leu Tyr Ser Gly Asp Lys Ile Tyr
65          70          75          80
Asp Asp Tyr Tyr Pro Asp Leu Lys Gly Arg Val His Phe Thr Ser Asn
85          90          95
Asp Leu Lys Ser Gly Asp Ala Ser Ile Asn Val Thr Asn Leu Gln Leu
100         105        110
Ser Asp Ile Gly Thr Tyr Gln Cys Lys Val Lys Lys Ala Pro Gly Val
115        120        125
Ala Asn Lys Lys Ile His Leu Val Val Leu Val Lys Pro Ser Gly Ala
130        135        140
Arg Cys Tyr Val Asp Gly Ser Glu Glu Ile Gly Ser Asp Phe Lys Ile
145        150        155        160
Lys Cys Glu Pro Lys Glu Gly Ser Leu Pro Leu Gln Tyr Glu Trp Gln
165        170        175

```

-continued

Lys	Leu	Ser	Asp	Ser	Gln	Lys	Met	Pro	Thr	Ser	Trp	Leu	Ala	Glu	Met
			180					185					190		
Thr	Ser	Ser	Val	Ile	Ser	Val	Lys	Asn	Ala	Ser	Ser	Glu	Tyr	Ser	Gly
		195					200					205			
Thr	Tyr	Ser	Cys	Thr	Val	Arg	Asn	Arg	Val	Gly	Ser	Asp	Gln	Cys	Leu
	210					215					220				
Leu	Arg	Leu	Asn	Val	Val	Pro	Pro	Ser	Asn	Lys	Ala	Gly	Leu	Ile	Ala
225				230						235					240
Gly	Ala	Ile	Ile	Gly	Thr	Leu	Leu	Ala	Leu	Ala	Leu	Ile	Gly	Leu	Ile
				245					250					255	
Ile	Phe	Cys	Cys	Arg	Lys	Lys	Arg	Arg	Glu	Glu	Lys	Tyr	Glu	Lys	Glu
		260						265					270		
Val	His	His	Asp	Ile	Arg	Glu	Asp	Val	Pro	Pro	Pro	Lys	Ser	Arg	Thr
	275						280					285			
Ser	Thr	Ala	Arg	Ser	Tyr	Ile	Gly	Ser	Asn	His	Ser	Ser	Leu	Gly	Ser
	290					295					300				
Met	Ser	Pro	Ser	Asn	Met	Glu	Gly	Tyr	Ser	Lys	Thr	Gln	Tyr	Asn	Gln
305					310					315					320
Val	Pro	Ser	Glu	Asp	Phe	Glu	Arg	Thr	Pro	Gln	Ser	Pro	Thr	Leu	Pro
				325					330					335	
Pro	Ala	Lys	Val	Ala	Ala	Pro	Asn	Leu	Ser	Arg	Met	Gly	Ala	Ile	Pro
		340						345					350		
Val	Met	Ile	Pro	Ala	Gln	Ser	Lys	Asp	Gly	Ser	Ile	Val			
	355						360					365			

1. A recombinant DNA molecule comprising a nucleotide sequence, in expressible form, which sequence encodes amino acids 20 through 144 of SEQ ID NO: 11, wherein the encoded sequence includes one or more amino acid substitutions.
2. The recombinant DNA molecule of claim 1 wherein amino acids 20 and 21 are substituted.
3. The recombinant DNA molecule of claim 2 wherein the amino acid substitutions are L20M and S21G.
4. The recombinant DNA molecule of claim 3 wherein the nucleotide sequence corresponds to nucleotides 117-491 of human CAR cDNA (SEQ ID NO: 10) wherein T at 117 is replaced with A and wherein A at 120 is replaced with G.
5. A recombinant DNA molecule comprising a nucleotide sequence, in expressible form, which sequence encodes amino acids 20 through 237 of SEQ ID NO: 11, wherein amino acids L20 and S21 are substituted.
6. The recombinant DNA molecule of claim 5 wherein the nucleotide sequence corresponds to nucleotides 117-770 of human CAR cDNA (SEQ ID NO: 10) wherein T at 117 is replaced with A and wherein A at 120 is replaced with G.
7. A recombinant DNA molecule comprising, in expressible form, a first nucleotide sequence which encodes amino acids 20 through 144 of SEQ ID NO: 11, fused in frame to a second nucleotide sequence which encodes a polypeptide

- which facilitates folding of D1 into a functional, soluble domain when expressed in bacteria.
8. The recombinant DNA molecule of claim 7 wherein the first nucleotide sequence corresponds to nucleotides 117-491 of human CAR cDNA (SEQ ID NO: 10).
9. The recombinant DNA molecule of claim 8 wherein the first nucleotide sequence further comprises one or more nucleotide substitutions.
10. The recombinant DNA molecule of claim 9 wherein the one or more nucleotide substitutions comprise substitution of A for T at position 117 and G for A at position 120 of SEQ ID NO: 10.
11. The recombinant DNA molecule of claim 7 wherein the second nucleotide sequence is located 3' to the first nucleotide sequence.
12. The recombinant DNA molecule of claim 11 wherein the second nucleotide sequence encodes the polypeptide sequence LEDPAANKARKEAELAAATAEQ.
13. A bacterial cell transformed with a recombinant DNA molecule selected from the group consisting of the recombinant DNA molecules of claim 1, 2, 3, 4, 5, 6, 7, 8, 9, 10, 11 or 12.

* * * * *