



From a modest beginning in 1800 with the purchase of three maps and an atlas from a London bookseller, the Library of Congress today houses the largest and most comprehensive cartographic collection in the world. Collecting in all geographic areas, time periods and cartographic formats, the Geography and Map Division's holdings number over five million maps, atlases, microforms, globes, models and spatial data sets. It is the nation's major center for the preservation and study of cartography.

The Geography and Map Division's collections document the development and history of mapmaking worldwide and include original cartographic materials dating from 14<sup>th</sup> century portolan charts to modern computer-generated maps produced from satellite imagery.

An experienced staff of reference librarians, catalogers, specialists, cartographers and technicians acquire and preserve cartographic materials, develop national and international cataloging standards and make the Library's resources available to researchers around the world. An active scanning program is making many of the Division's historical maps available through the Library's acclaimed "American Memory" web-site (found at [www.loc.gov](http://www.loc.gov)). Most recently, the Division has undertaken the production of maps in direct support of the work of Congress.



The Philip Lee Phillips Society was established in 1995 as an association of map enthusiasts, collectors and producers as well as geographers, cartographers and historians with a shared interest in supporting and promoting the programs and activities of the Geography and Map Division.

The Society's mission is to:

- Help the Division and its staff develop and preserve the cartographic collections of the Library of Congress
- Encourage financial donations, gifts and bequests
- Make the Division's vast resources more widely known and available
- Advance the Division's publication, symposia and exhibition programs



Nicholas Scull. *A Map of Philadelphia and Parts Adjacent*. [Philadelphia : 1752]

### PHILIP LEE PHILLIPS (1857-1924)

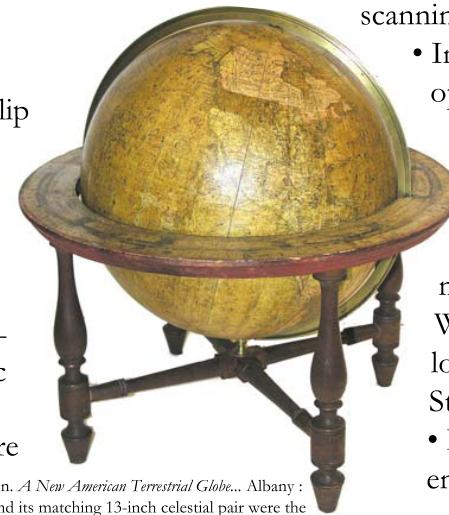
The Society is named in honor of Philip Lee Phillips, the Library's first Superintendent of Maps. Appointed in 1897, Phillips devoted over thirty years to the development of the Library's map and atlas collection. Phillips was also an innovator in the preparation and publication of bibliographic tools for describing the Library's collections. Most of these publications are still in use today, one hundred years later.

### BENEFITS OF MEMBERSHIP

- Publications such as the *Library of Congress Geography and Maps: An Illustrated Guide*, map facsimiles and the Society's *Occasional Paper Series*
- The Society's *Newsletter* describing the Division's collection development, exhibition and publication activities
- Behind the scenes tours of the Geography and Map Division, including its outstanding rare materials collection
- Workshops that provide opportunities for learning from specialists in map preservation, map cataloging, cartographic research and scanning operations



Rand McNally. *Washington, D.C. and Metropolitan Area, Sunoco Road Map*. Chicago : 1950. This is one of 16,000 maps from the Peterson Road Map Collection.



James Wilson. *A New American Terrestrial Globe*.. Albany : 1819. This and its matching 13-inch celestial pair were the first cartographic pieces acquired by the Phillips Society.

- Invitations to exhibition openings, lecture series and symposia sponsored and hosted by the Geography and Map Division
- Annual Phillips Society meeting and dinner held in Washington, D.C. and other locations around the United States
- Interaction with other map enthusiasts

## OFFICERS AND ADVISORS

### Steering Committee

William B. Ginsberg, New York (co-chair)  
J. Thomas Touchton, Florida (co-chair)  
Roger S. Baskes, Illinois  
Wesley A. Brown, Colorado  
Allen Carroll, Washington, D.C.  
Barbara Adele Fine, Maryland  
Dr. Joseph H. Fitzgerald, Florida  
Jenkins and Virginia Garrett, Texas  
Robert A. Highbarger, Maryland  
Arthur Holzheimer, Illinois  
Jay Lester, North Carolina  
Glen McLaughlin, California  
Kenneth Nebenzahl, Illinois  
Gary W. North, Virginia  
Roni Pick, Massachusetts  
Dr. Seymour I. Schwartz, New York  
George Tobolowsky, Texas  
Eric W. Wolf, Virginia

### Academic Advisors

Louis DeVorsey, Jr., University of Georgia  
Ronald E. Grim, Boston Public Library  
Alice Hudson, New York Public Library  
Mark Monmonier, Syracuse University  
Mary Pedley, University of Michigan  
Dennis Reinhartz, University of Texas-Arlington  
Richard W. Stephenson  
Norman J.W. Thrower, University of California-Los Angeles  
Cordell D.K. Yee, St. John's College, Annapolis

### Ex Officio

John R. Hébert, Chief, G&M, 1999-  
Ralph E. Ehrenberg, Chief, G&M, 1991-1998  
John A. Wolter, Chief, G&M, 1978-1991  
Walter W. Ristow, Chief, G&M 1968-1978

### Executive Secretary

Patricia Molen van Ee, Specialist in Cartographic History, G&M

## MEMBERSHIP

Annual Membership Categories:

Benefactor	\$10,000	Contributor	\$250
Patron	\$5,000	Member	\$100
Sponsor	\$1,000	Associate	\$50

Payment should be made by check payable (in U.S. dollars) to: **Library of Congress-Phillips Society Gift Fund.**

### For further information, please contact:

Patricia Molen van Ee  
Phone: 202-707-8534  
Fax: 202-707-8531  
E-mail: [pvanee@loc.gov](mailto:pvanee@loc.gov)



### Mailing address:

Library of Congress  
Geography and Map Division  
101 Independence Avenue, SE  
Madison Building, Room LM B01  
Washington, D.C. 20540-4650

Phone: 202-707-8530  
Fax: 202-707-8531

### Geography and Map Division Web site:

<http://www.loc.gov/rr/geogmap/>

### Library of Congress online catalog

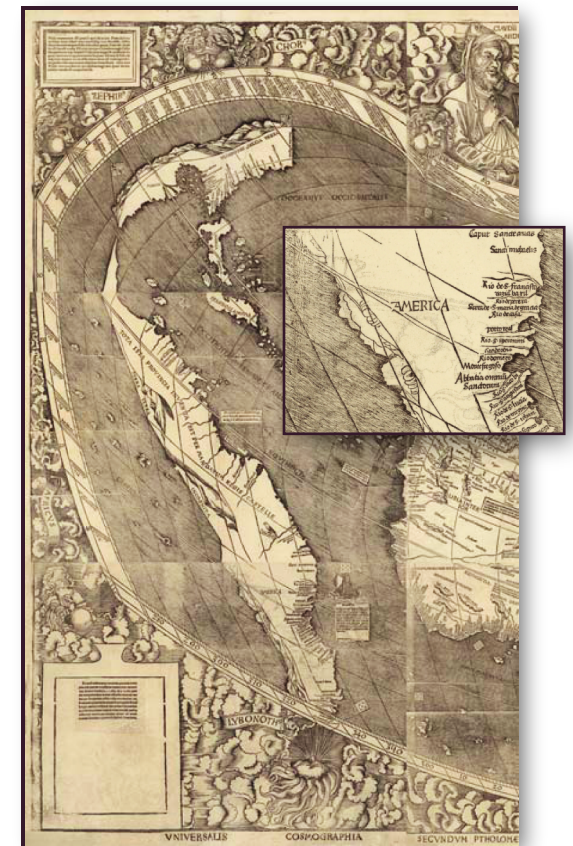
<http://catalog.loc.gov>

***All the items reproduced in this brochure were acquired with the assistance of the Phillips Society and its members***



PHILIP LEE PHILLIPS  
SOCIETY

LIBRARY OF CONGRESS



Martin Waldseemüller. *Universalis Cosmographia Secundum Ptholomaei Traditionem*. St. Dié : 1507. Illustrated is the western portion of the map. Known in only one copy, it is the first map to name America and the first to define a separate American hemisphere.

AN ASSOCIATION OF FRIENDS  
OF THE  
GEOGRAPHY AND MAP DIVISION