



U.S. Fish & Wildlife Service

Providing Wetlands Information to the Nation

National Wetlands Inventory



Idaho wetland and riparian habitat

Wetlands are the cornerstone of many important and complex ecosystems. They provide countless benefits for fish, wildlife, and people. The Emergency Wetlands Resources Act of 1986 directs the Fish and Wildlife Service to map our Nation's wetlands and deepwater habitats and produce information on their characteristics, extent, and status.

Past and Future Actions

For 25 years, the Service has provided Federal and State agencies, the private sector, and citizens with scientific data on wetland location, extent, status, and trends. As the Service's National Wetlands Inventory program works to complete baseline wetland mapping in the lower 48 States and Alaska, it will continue to build a digital wetland database, strategically update maps, and conduct focused status and trend assessments in priority areas to guide resource management and decision-making.

How data are used

Improved management of natural resources requires up-to-date knowledge of the extent, nature, and distribution of wetlands and other

habitats on which fish and wildlife depend. NWI products support Service and non-profit wetland acquisition programs beneficial to migratory birds. They are also used for fishery restoration, flood plain and watershed planning, endangered species recovery efforts, and to plan for energy resource and infrastructure development. NWI wetland maps and wetland information are important tools that help government and citizens develop areas responsibly while conserving our Nation's wetlands.

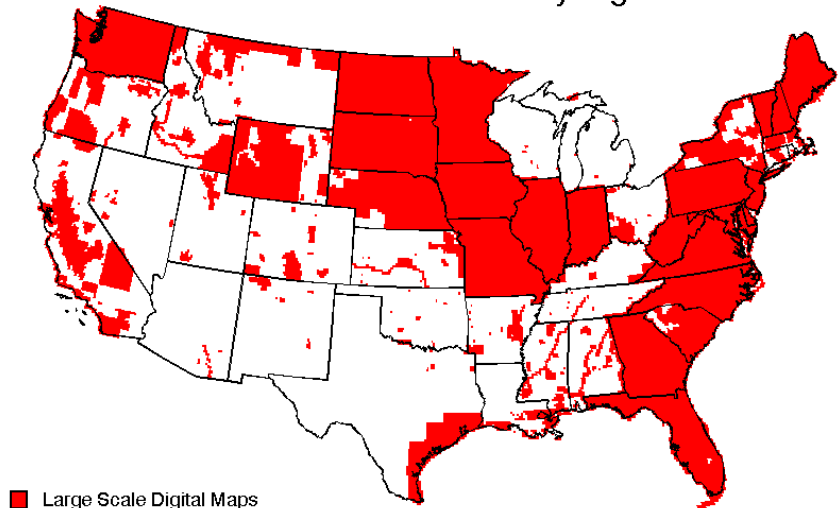
Paper Map Availability

Users can order NWI wetland maps through cooperator-run distribution centers, listed online at http://wetlands.fws.gov/maps/distribution_ctrs.htm. Maps are also available through 590 Depository Libraries and over the Internet at wetlands.fws.gov.

Digital Data

NWI maps are converted to digital data for geographic information system applications. Although only

National Wetlands Inventory Digital Status



January 2003

