

Aoulef, Algeria

26-58 N, 01-05 E.

290 meters MSL

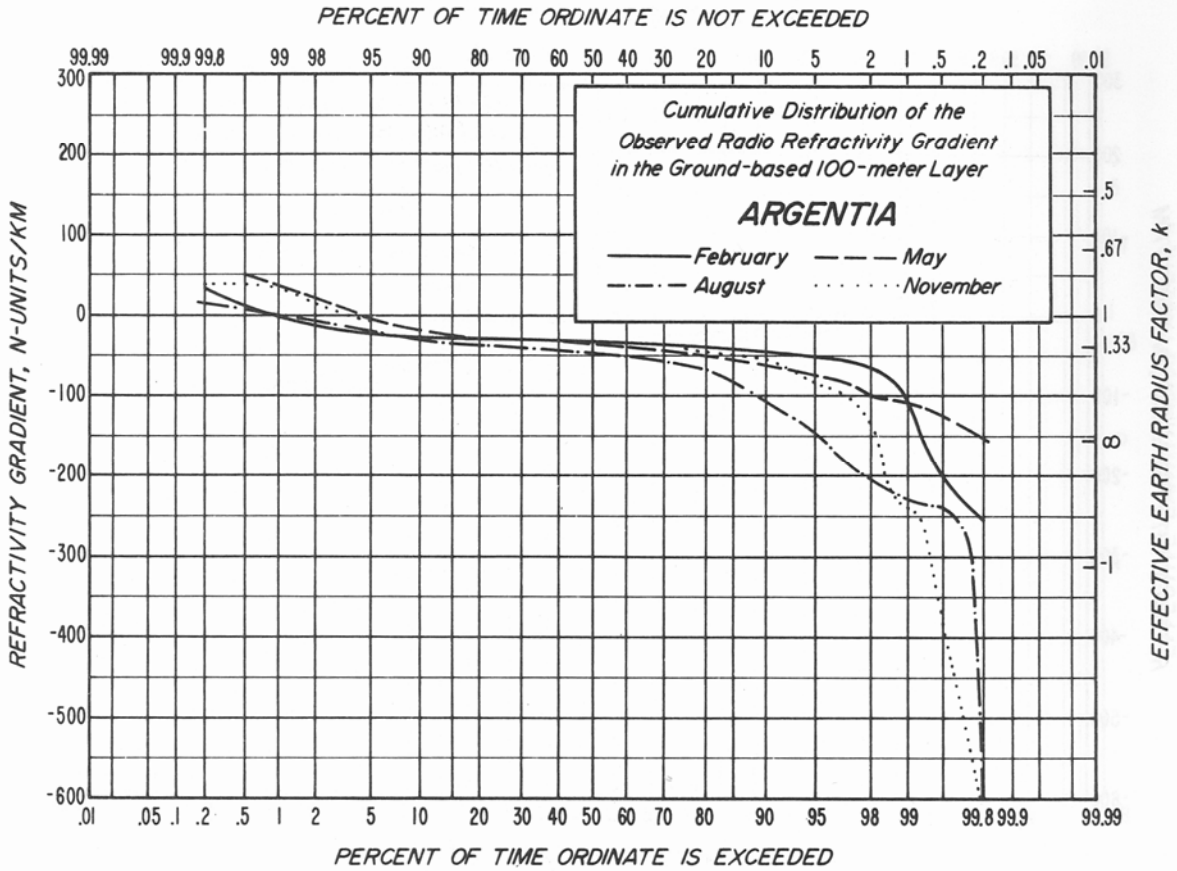
Data: Radiosonde. 1400Z (1400 LST)
 2/57
 1200Z (1200 LST)
 5/57 - 2/62

Temperature (°F): January 71/44; July 113/85

Mean Dewpoint (°F): January 31; July 36

Precipitation (inches): Annual 0.6; November 0.20; July 0.01

An oasis in the Sahara; a desert climate with scanty rainfall and very hot summers.



Argentia, Newfoundland

47-18 N, 54-00 W.

17 meters MSL

Data: Radiosonde.

0300 and 1500Z (2300 and 1100 LST)
8/52 - 5/57

Temperature (°F):

January 34/24; July 62/53

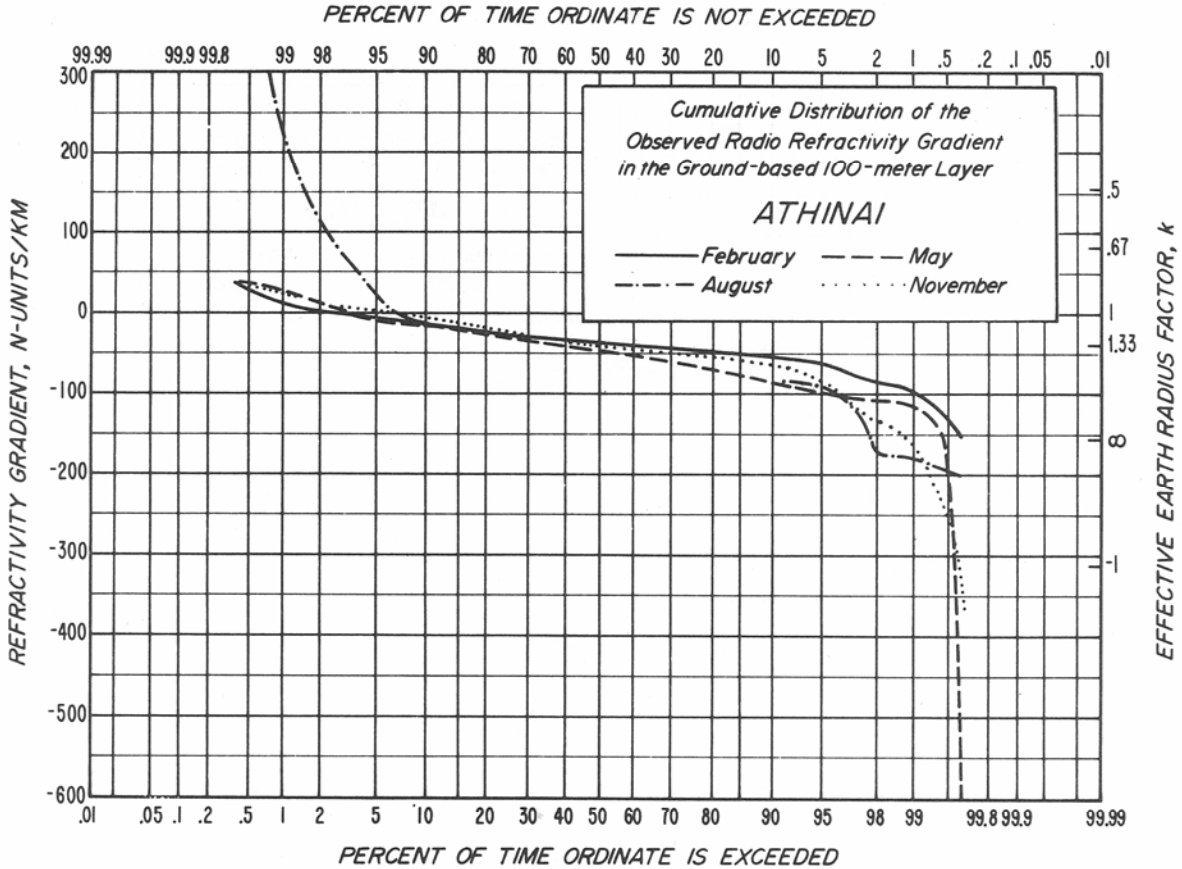
Mean Dewpoint (°F):

January 25; July 53

Precipitation (inches):

Annual 42.6; November 4.98; June 2.41

Located on a peninsula extending into Placentia Bay in southwest Newfoundland. It is a maritime location but the climate is essentially continental because air masses affecting the area usually come from the west.



Athinai (Athens), Greece

37-58 N, 23-43 E.

27 meters MSL

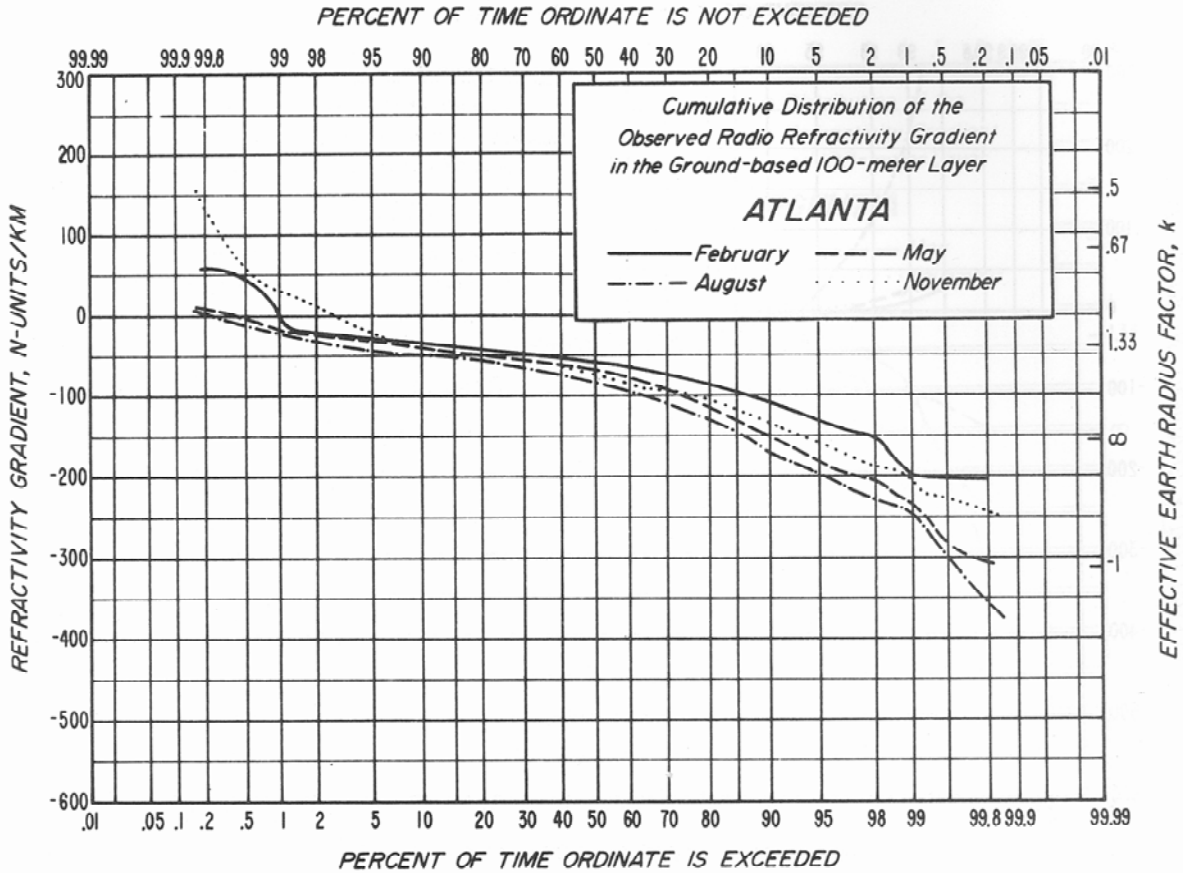
Data: Radiosonde. 0000Z (0200 LST)
 8/58 - 5/63

Temperature (°F): January 54/42; July 90/72

Mean Dewpoint (°F): January 37; July 58

Precipitation (inches): Annual 15.9; Nov., Dec. 2.80; July 0.20

Located near the Saronic Gulf on the Attic plain; enclosed on three sides by hills. Temperate climate with mild winters and hot, dry summers.



Atlanta, Georgia

33-39 N, 84-26 W.

315 meters MSL

Data: Radiosonde.

0300 and 1500Z (2100 and 0900 LST)
8/52 - 5/57

Temperature (°F):

January 52/37; July 87/71

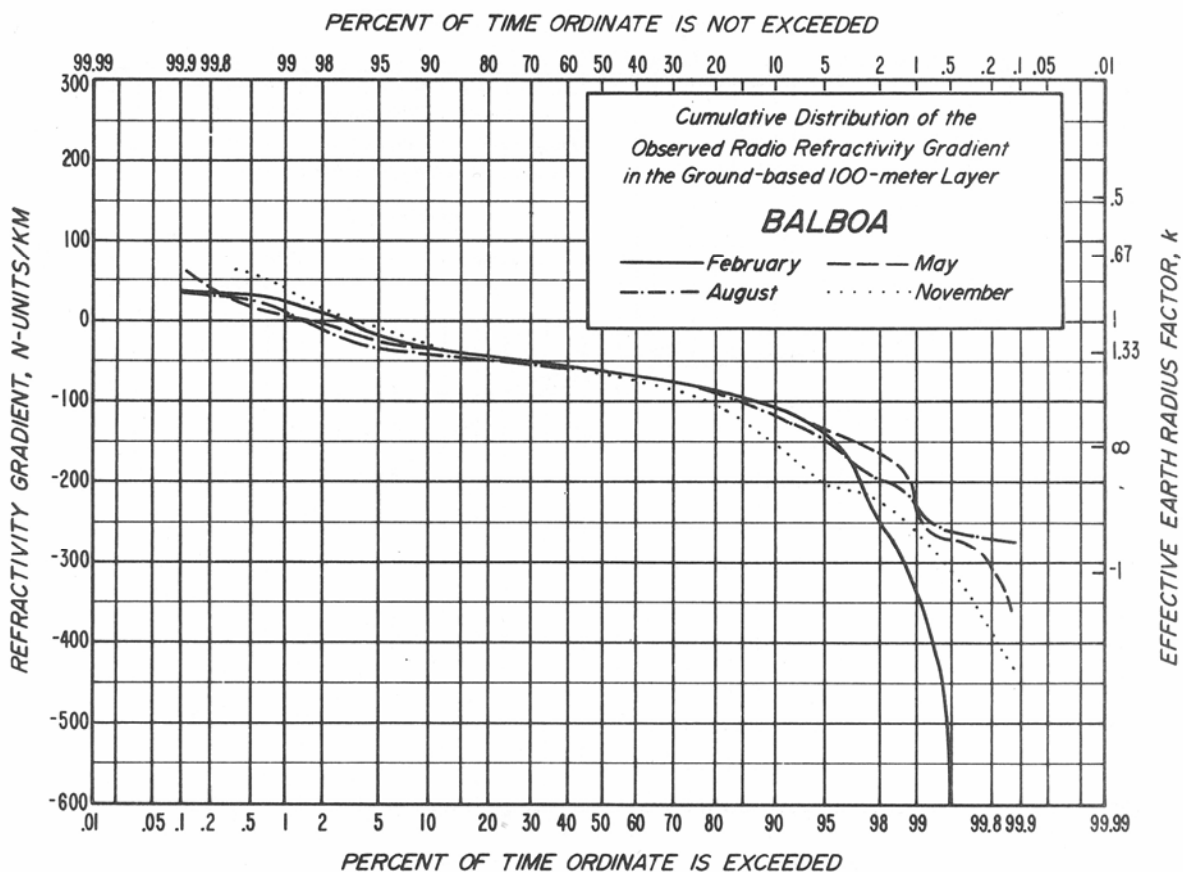
Mean Dewpoint (°F):

January 35; July 68

Precipitation (inches):

Annual 47.1; March 5.37; October 2.44

Located at the foot of the Blue Ridge Mountains; rolling to hilly terrain nearby. Generally mild temperate climate, approaching humid sub-tropical in summer.



Balboa, Canal Zone

08-56 N, 79-34 W.

9 meters MSL

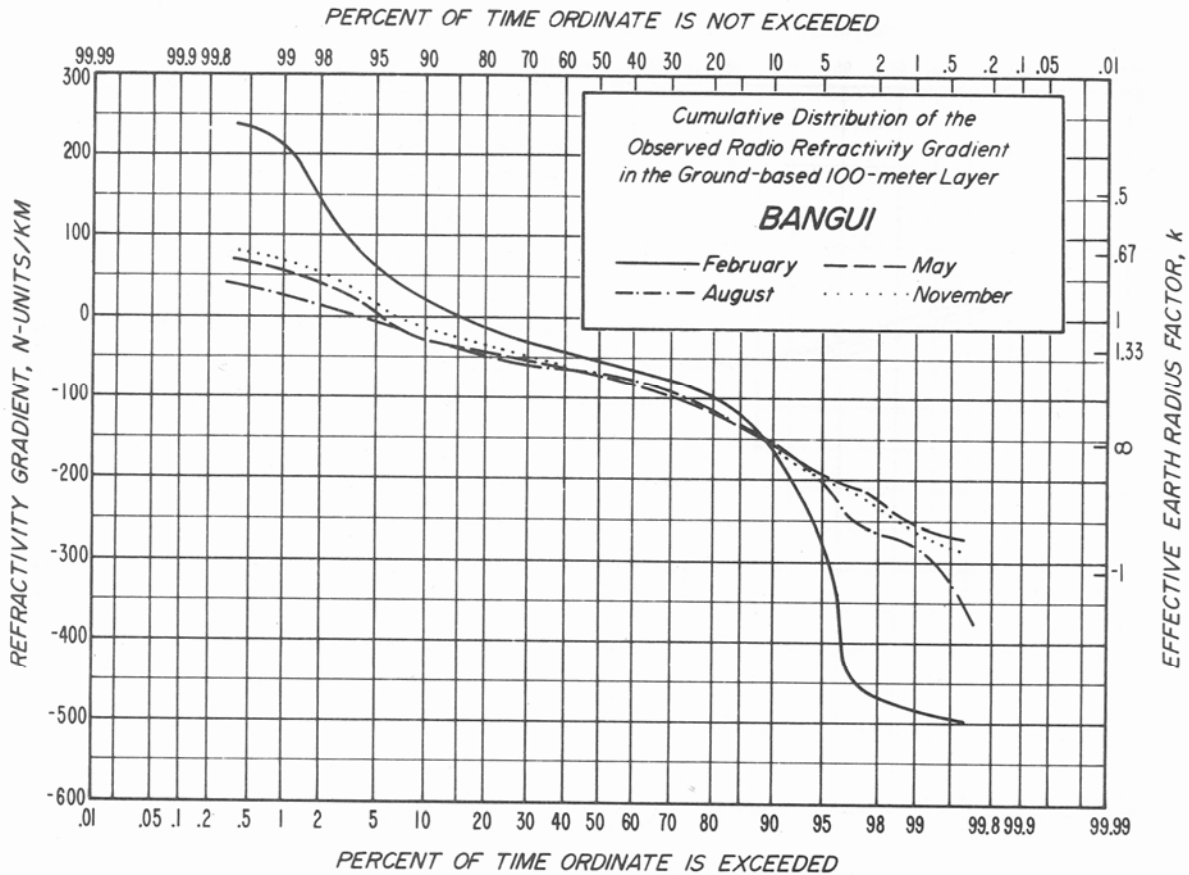
Data: Radiosonde. 0300 and 1500Z (2200 and 1000 LST)
 1/51 - 6/57
 0000 and 1200Z (1900 and 0700 LST)
 7/57 - 12/57

Temperature (°F): January 89/74; July 87/75

Mean Dewpoint (°F): January 71; July 74

Precipitation (inches): Annual 59.3; November 9.78; March 0.68

Located on the Pacific coast side of the Panama Canal Zone. A hot, humid maritime tropical climate with wet and dry seasons.



Bangui, Central African Republic

04-23 N, 18-34 E.

385 meters MSL

Data: Radiosonde. 0300Z (0400 LST): 8/52 - 2/53
 0400Z (1500 LST): 5/53 - 11/55
 0500Z (0600 LST): 2/56 - 11/59
 0600Z (0700 LST): 2/60 - 8/60

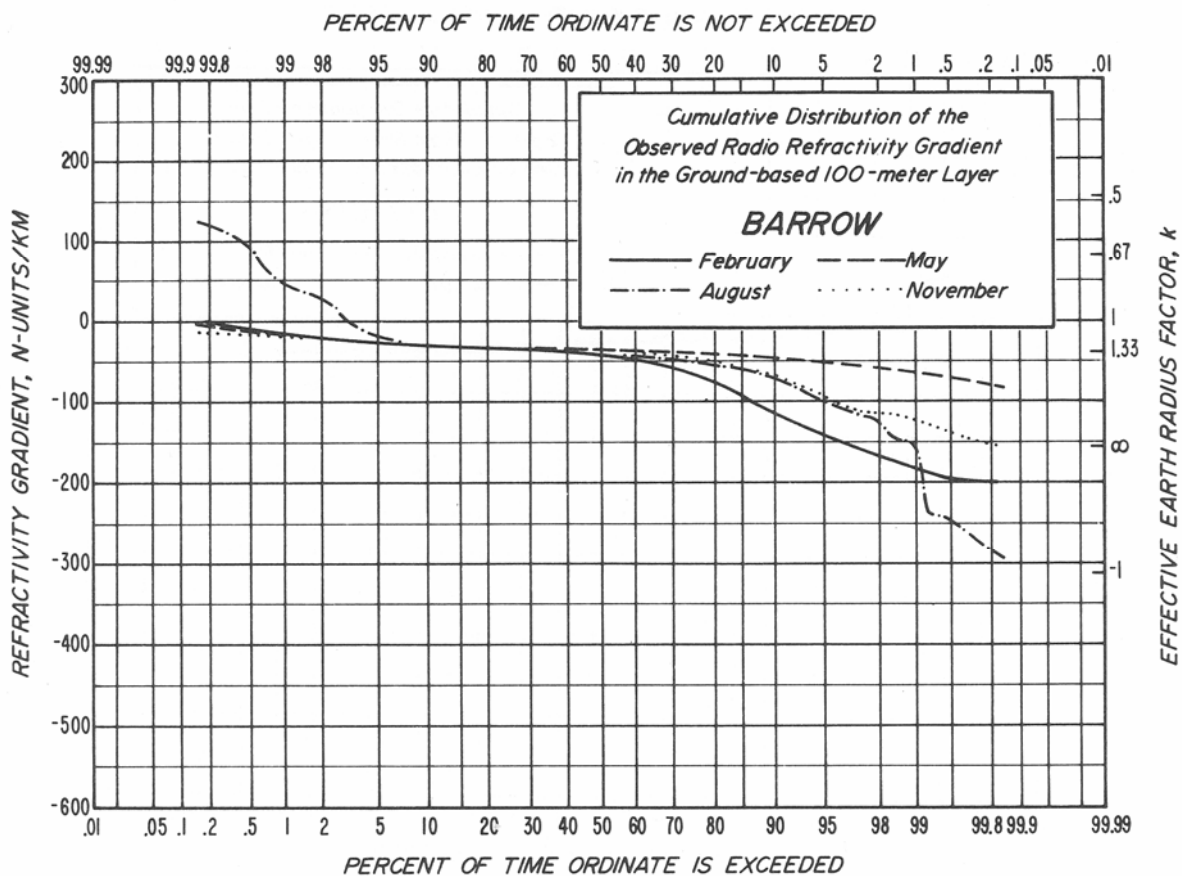
Note: Last 3 periods observations only every other day.

Temperature (°F): January 91/67; July 86/69

Mean Dewpoint (°F): January 69; July 73

Precipitation (inches): Annual 61.4; August 8.86; January 0.83

Located on the Ubangi River; a wooded, hilly area but some marshy areas in vicinity. A hot and humid monsoon climate with June-October rainy season in southwest monsoon and the dry season October-March in the northeast trade winds.



Barrow, Alaska

71-18 N, 156-47 W

4 meters MSL

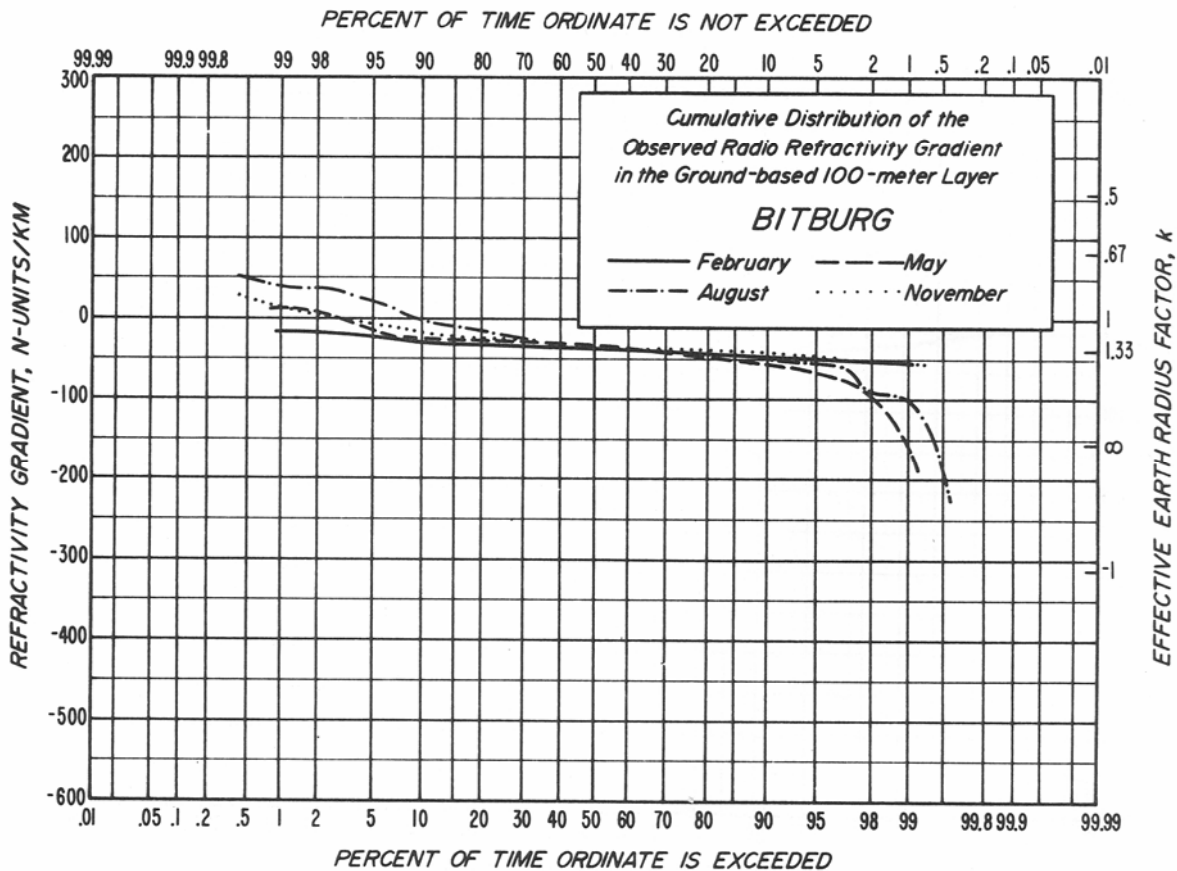
Data: Radiosonde. 0300 and 1500Z (1700 and 0500 LST)
8/52 - 5/57

Temperature (°F): January -9/-23; July 45/33

Mean Dewpoint (°F): January -25; July 37

Precipitation (inches): Annual 4.3; August 0.90; March and April 0.11

The Arctic Ocean lies to the north, east, and west; level tundra stretches 200 miles to the south. There are no natural wind barriers nearby. Temperatures are below freezing most of the year, but inversions are not as marked as in the interior of Alaska. The ocean generally becomes ice-free in late July or early August. There is considerable fog in summer.



Bitburg, Germany (Federal Republic)

49-57 N, 06-31 E.

374 meters MSL

Data: Radiosonde.

0300 and 1500Z (0300 and 1500 LST)
12/54 - 12/55

Temperature (°F):

January 35/27; July 69/53

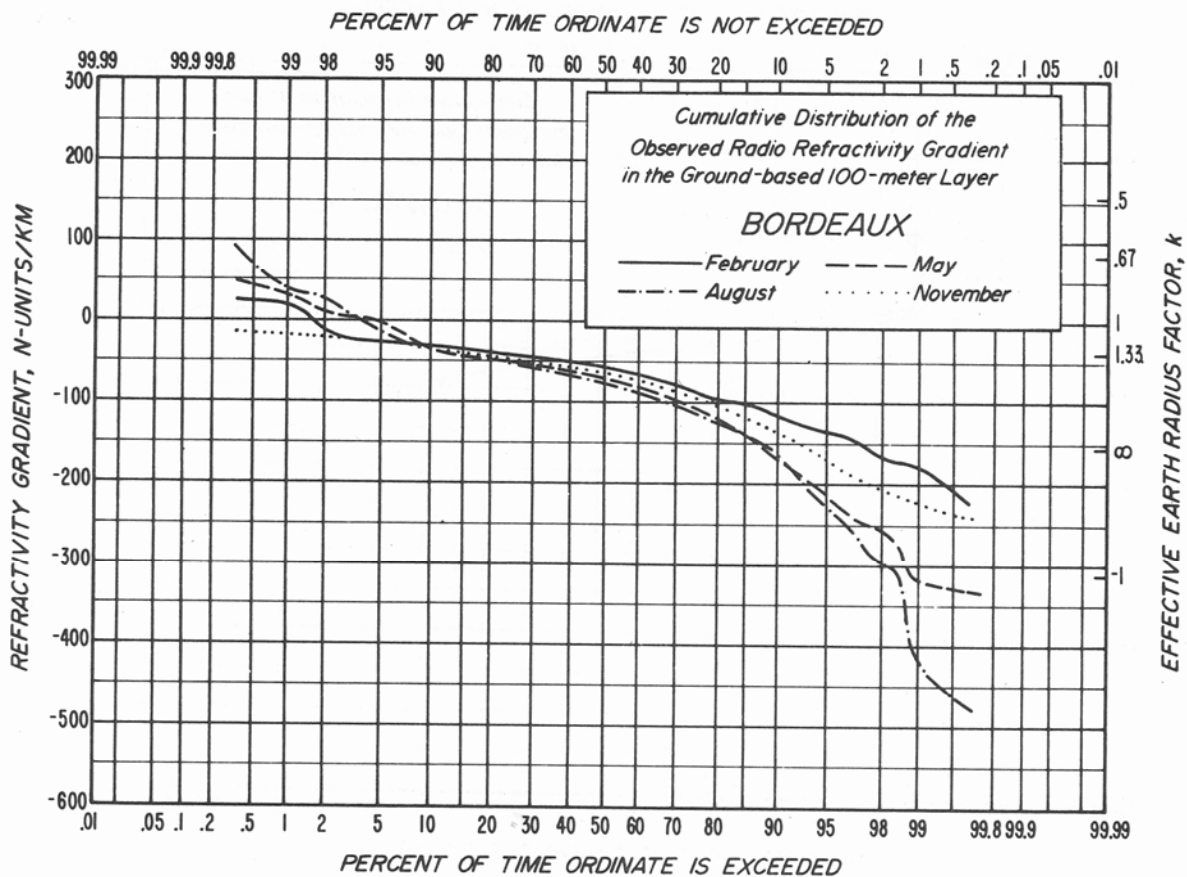
Mean Dewpoint (°F):

January 27; July 53

Precipitation (inches):

Annual 24.9; July 2.77; April 1.48

Located in rolling terrain of western Germany, about 15 miles from the Moselle River. A cool continental climate modified by frequent exposure to maritime air masses.



Bordeaux, France

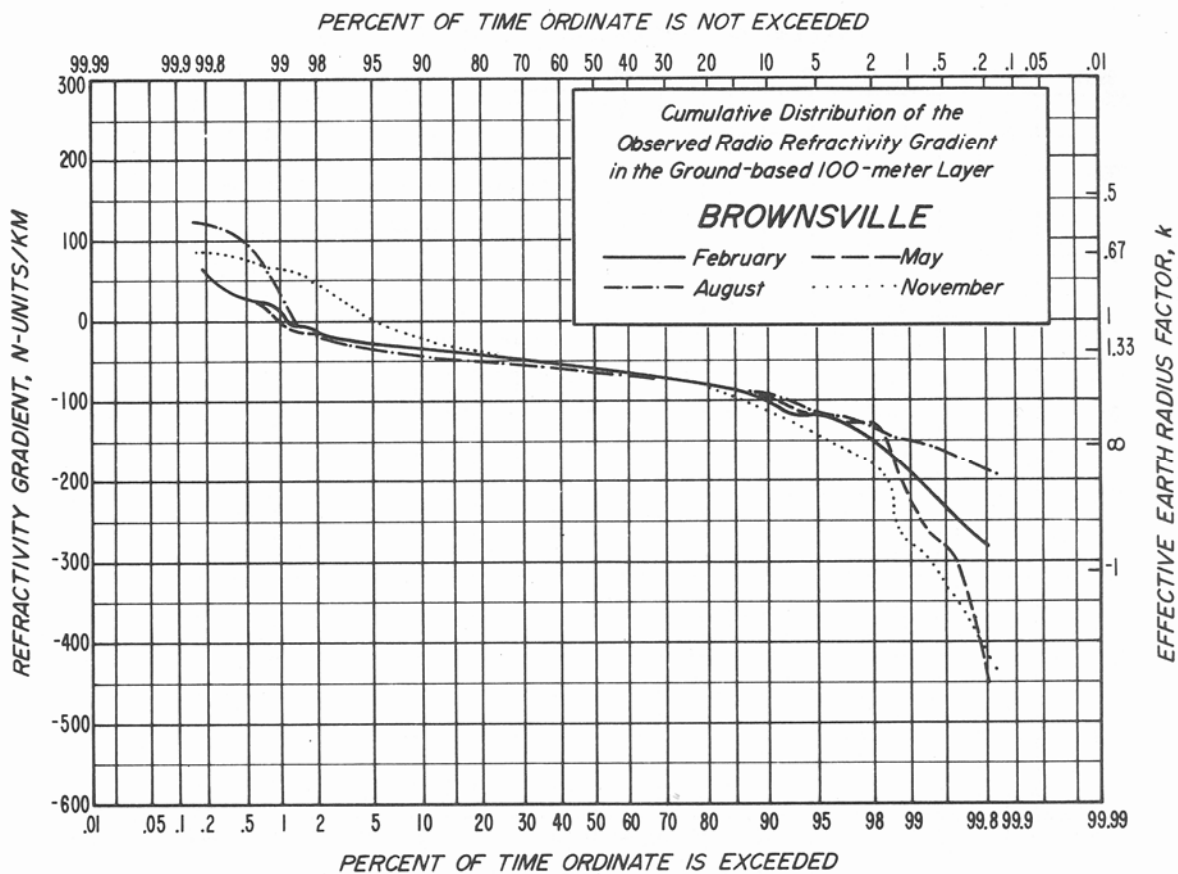
Data: Radiosonde. 0200Z (0200 LST)
 2/56 - 2/57
 0000Z (0000 LST)
 5/57 - 11/60

Temperature (°F): January 48/35; July 80/58

Mean Dewpoint (°F): January 36; July 57

Precipitation (inches): Annual 32.7; Nov., Dec. 3.90; August 1.90

Located in southwest France just above the confluence of the Garonne and Dordogne rivers; about 30 miles from the Atlantic Ocean. A relatively mild maritime climate.



Brownsville, Texas

25-55 N, 97-28 W.

6 meters MSL

Data: Radiosonde. 0300 and 1500Z (2100 and 0900 LST)
 8/52 - 5/57

Temperature (°F): January 71/52; July 93/76

Mean Dewpoint (°F): January 55; July 73

Precipitation (inches): Annual 26.8; September 4.99; March 1.04

Located in a relatively flat area in the Rio Grande valley; the Gulf of Mexico is only 18 miles to the east, with intervening tidal marshlands. The prevailing winds are from the Gulf. There are low mountains about 100 miles to the west, and extensive irrigated croplands in the vicinity. Humid sub-tropical climate