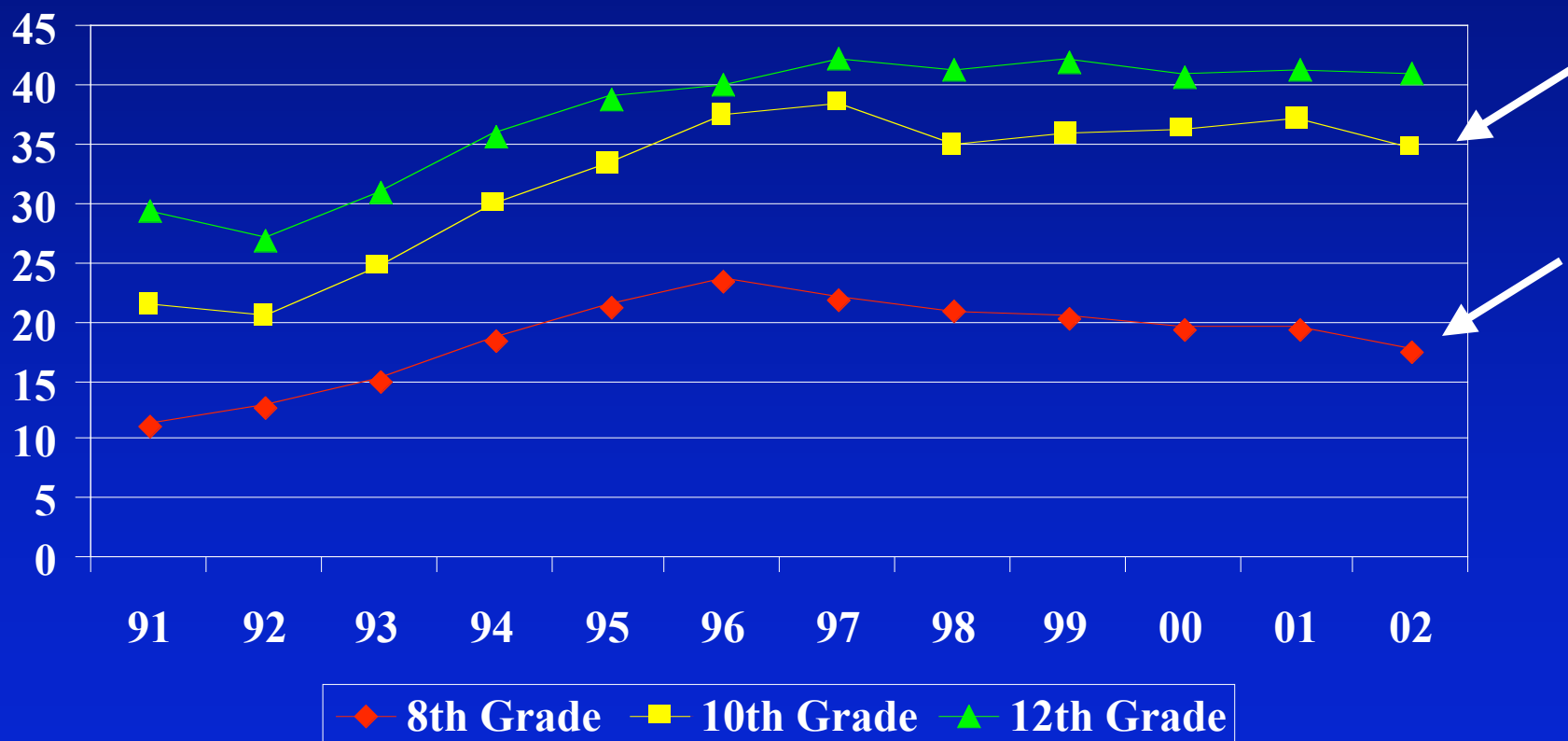


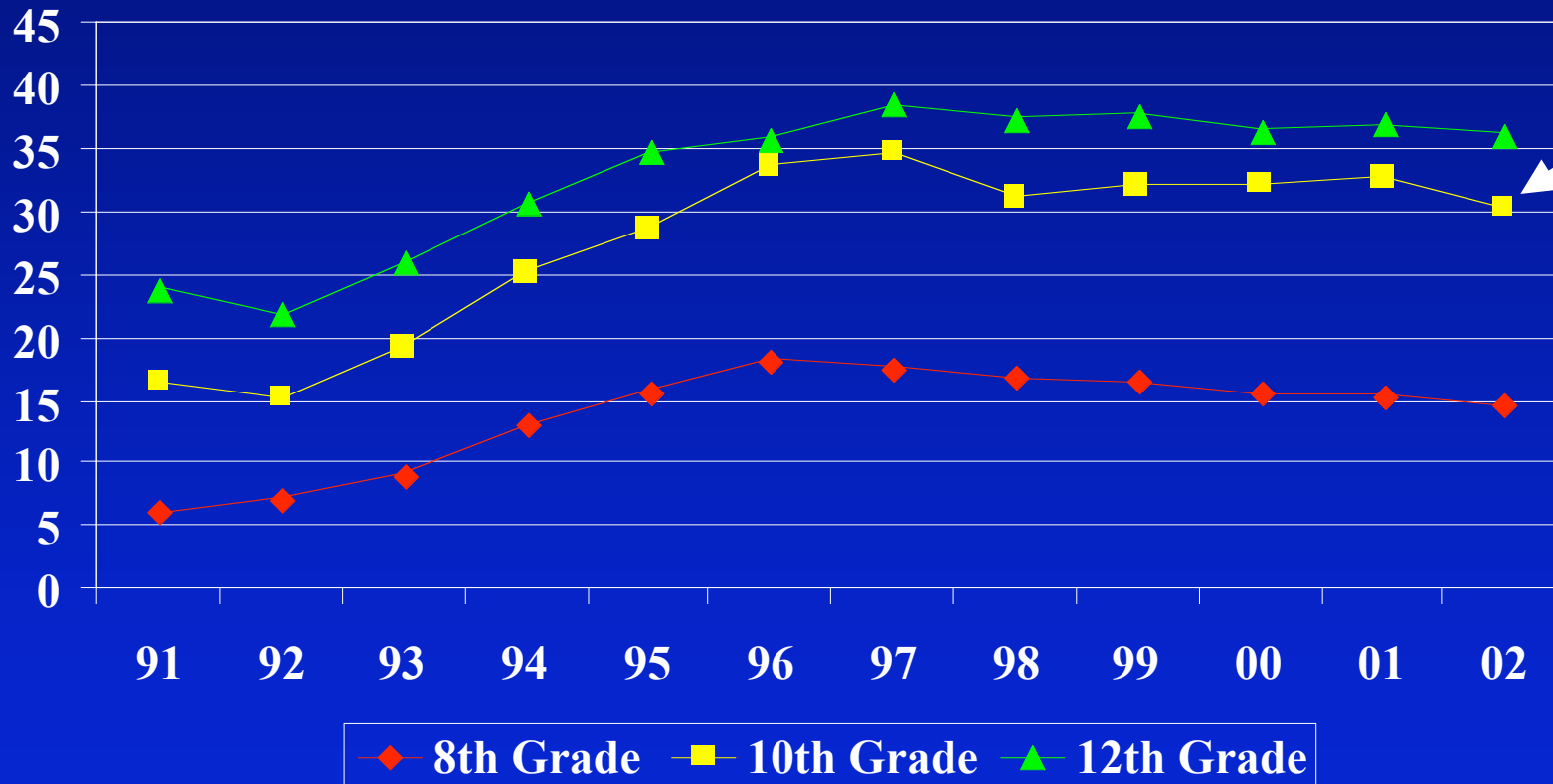
Percent of Students Reporting Any Illicit Drug Use in Past Year, by Grade



SOURCE: University of Michigan, 2002 Monitoring the Future Study



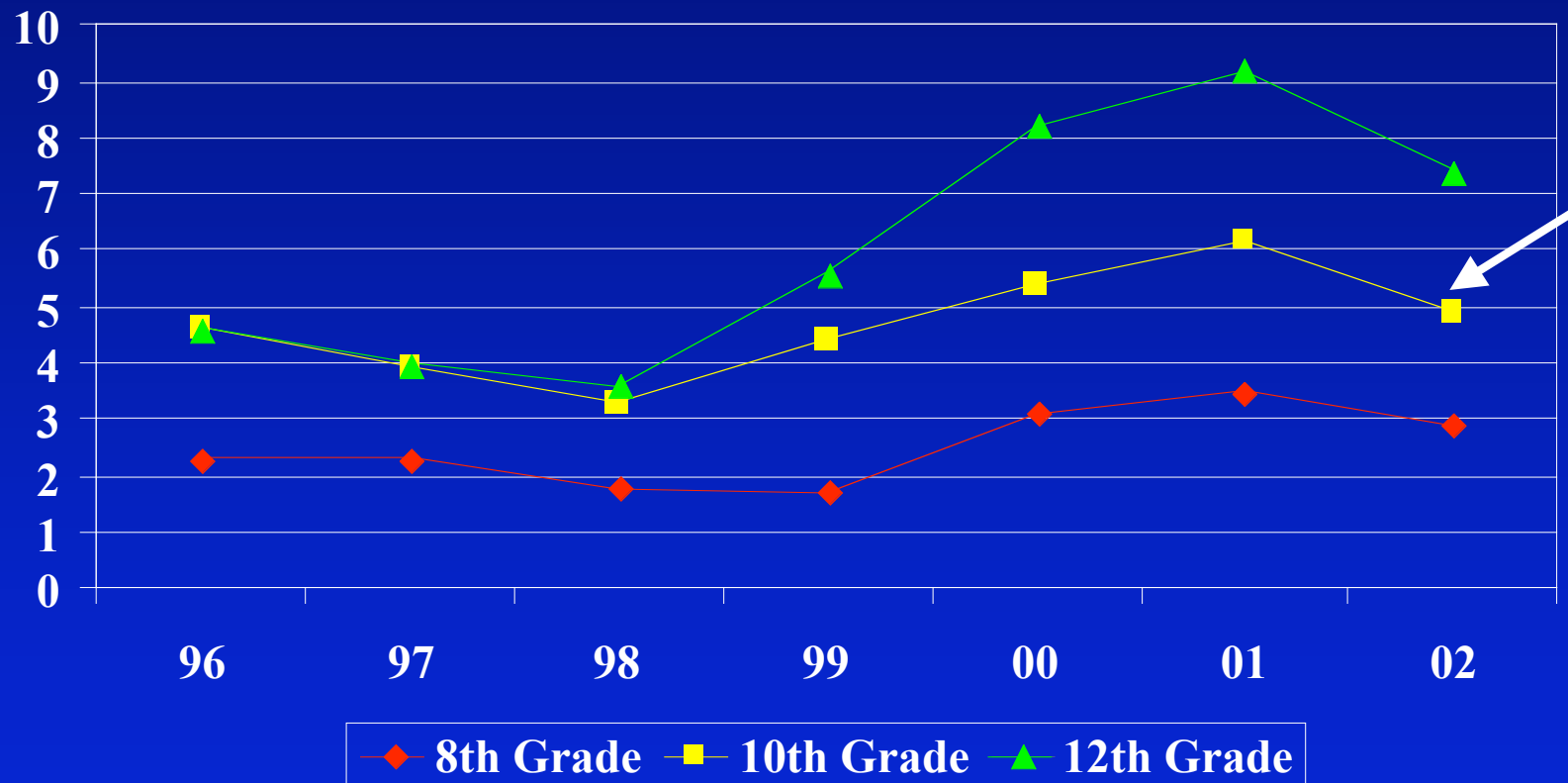
Percent of Students Reporting Use of Marijuana in Past Year, by Grade



SOURCE: University of Michigan, 2002 Monitoring the Future Study



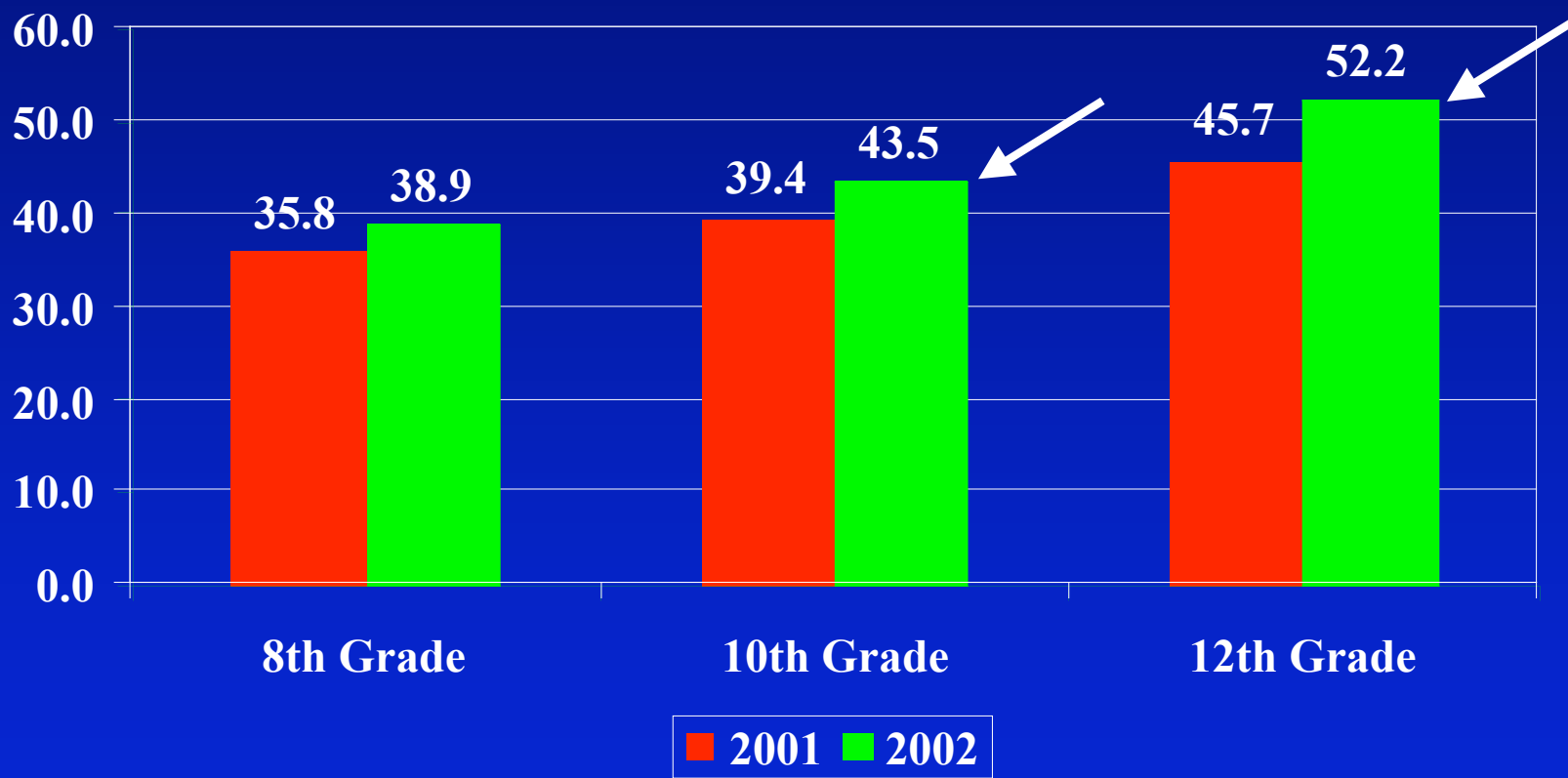
Percent of Students Reporting Past Year Use of MDMA (Ecstasy), by Grade



SOURCE: University of Michigan, 2002 Monitoring the Future Study



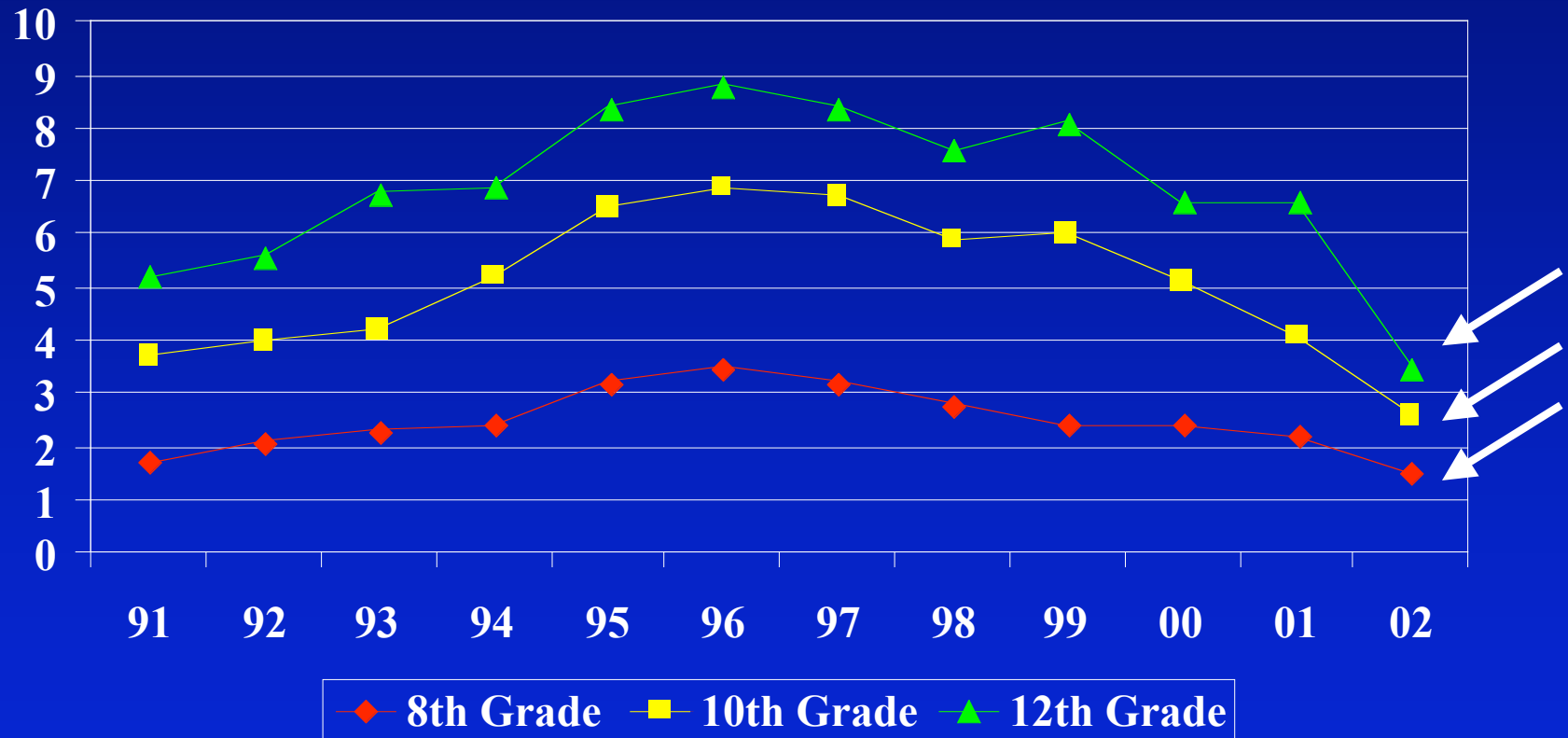
Percent Saying "Great Risk" from Trying MDMA (Ecstasy) Once or Twice, by Grade



SOURCE: University of Michigan, 2002 Monitoring the Future Study



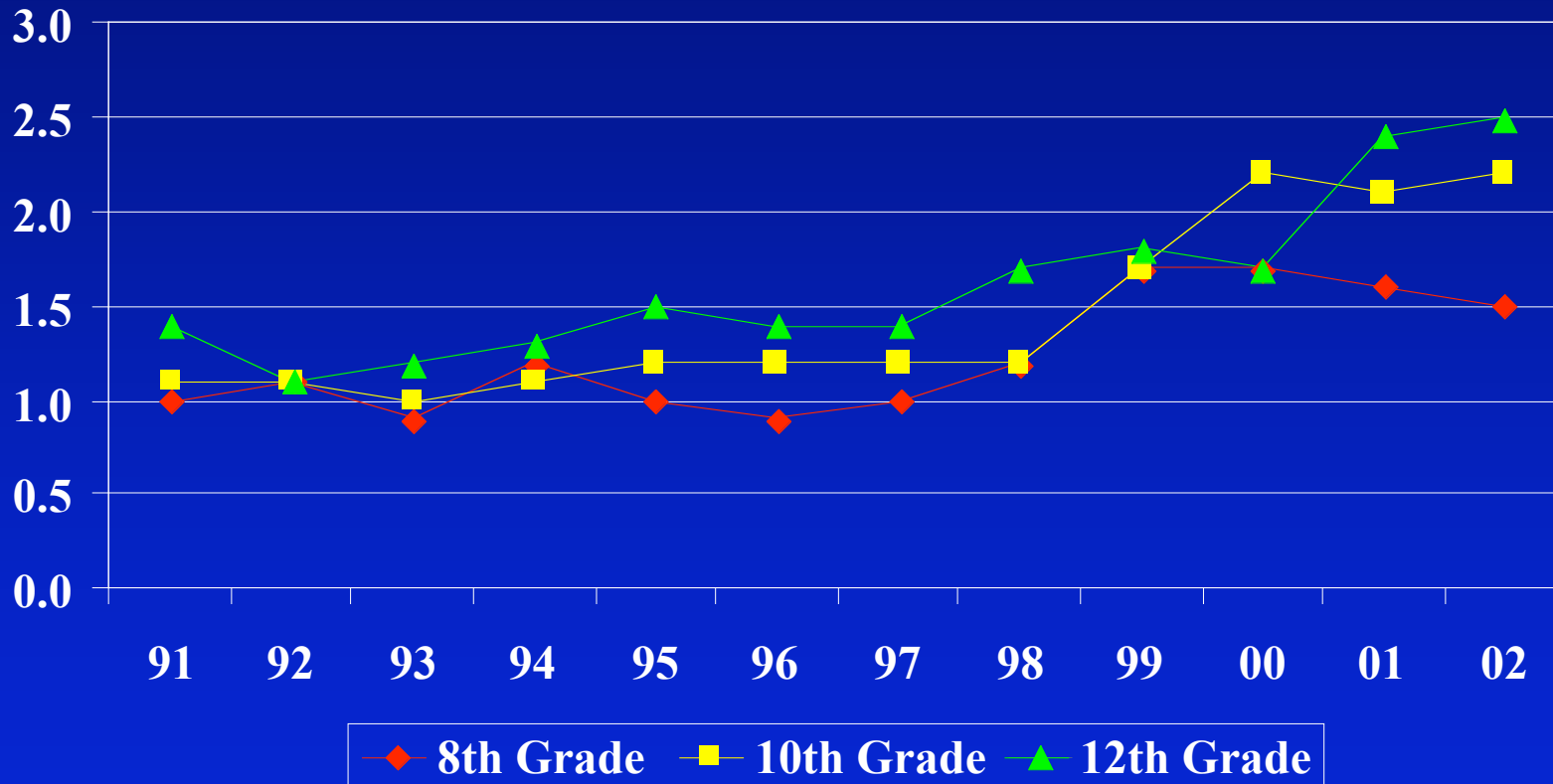
Percent of Students Reporting Use of LSD in Past Year, by Grade



SOURCE: University of Michigan, 2002 Monitoring the Future Study



Percent of Students Reporting Use of Steroids in Past Year, by Grade

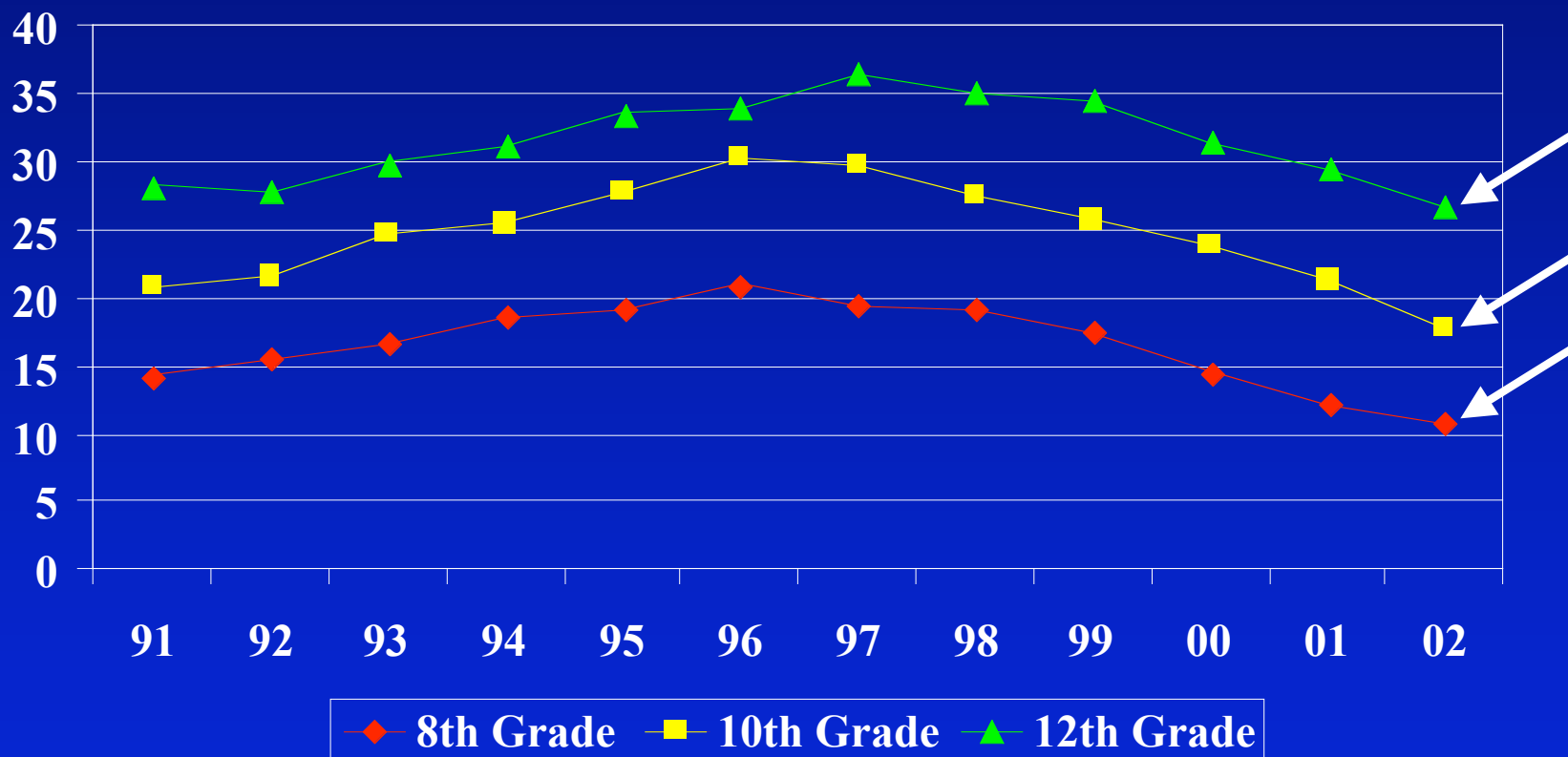


SOURCE: University of Michigan, 2002 Monitoring the Future Study

Differences from 2001 to 2002 are not statistically significant.



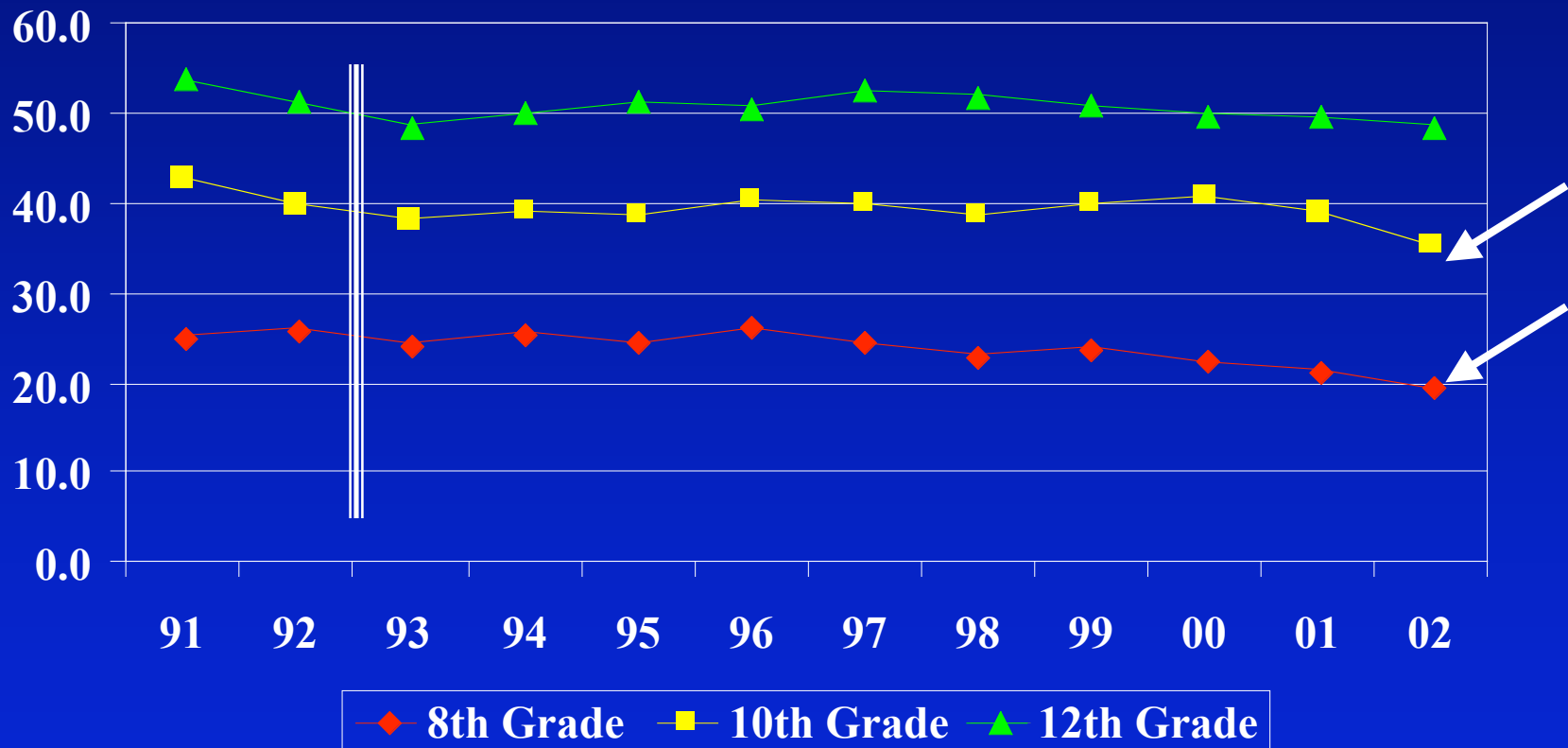
Percent of Students Reporting Smoking Cigarettes in Past Month, by Grade



SOURCE: University of Michigan, 2002 Monitoring the Future Study



Percent of Students Reporting Use of Alcohol in Past Month, by Grade



SOURCE: University of Michigan, 2002 Monitoring the Future Study

