

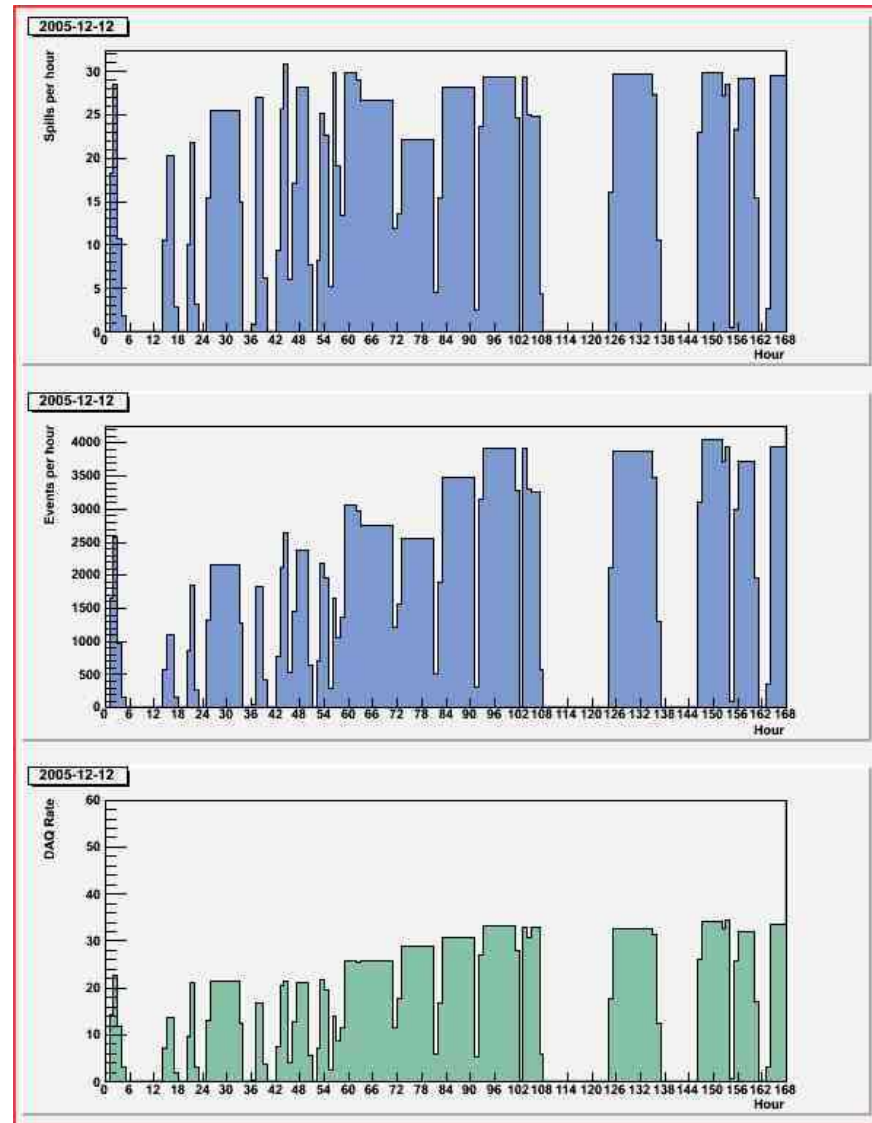
MIPP Status

Holger Meyer
Fermilab All Experimenters' Meeting
12/19/05

- Statistics
- Beam and detector status

MIPP Event Statistics

- ± 85 GeV/c $\pi/K/p$ beam
 - -85 GeV/c until wed. morning
 - +85 GeV/c since then
- LH₂ target
- 310440 events recorded in 2748 spills with beam
 - Plus ~1 hour of Bckov pressure curves



MIPP Beam and Detector Status

- Beam last week:
 - No significant problems when beam was delivered
 - Secondary beam polarity was changed on wednesday
 - Beam is narrow at +85 GeV/c, little spray
- Detector has no significant problems.
 - 1440 HV mainframe trip · reset ok (~1 hour lost)
 - Steady data taking whenever beam was available
- Tomorrow the cryo-target run will end.
The target wheel will be run on DU and other targets.
 - Other jobs in switchyard scheduled for the same 8 hour shutdown

Cryo-Stats

- The run on the cryo-target is almost over.
- Remaining beam time until March'06 will be used on target wheel and Kaon-mass measurement
- Data on LH2: (empty target not listed here)

Beam momentum (GeV/c)	Interaction events (1000)
-85	727
-60	790
-20	783
-5	101
5	30
20	765
60	963
85	>600

MIPP Summary

- MIPP was running well over the last week.
- Continue with +60 GeV/c on nuclear targets.

- Data analysis update:
 - Batch processing 'Pass 3' will start later this week
 - ~1 month to complete
 - PID for tracks in this pass