

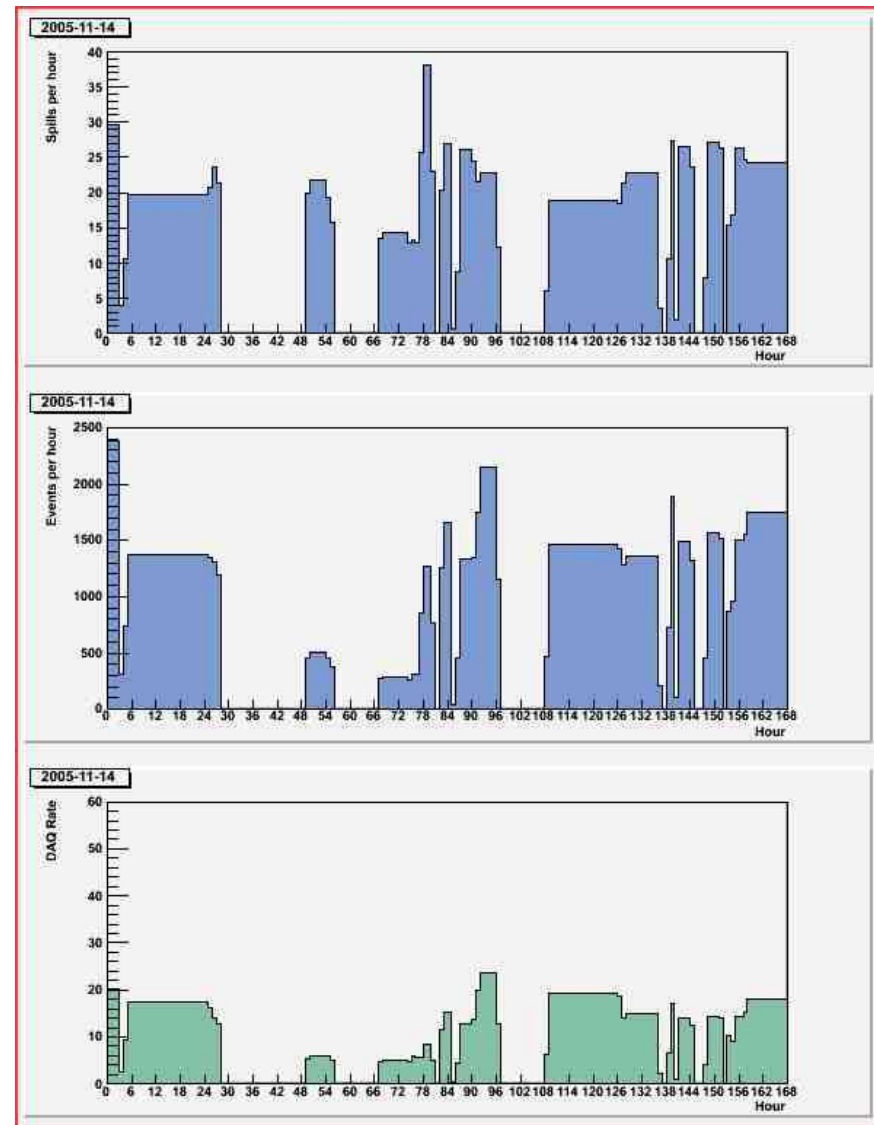
# *MIPP Status*

Holger Meyer  
Fermilab All Experimenters' Meeting  
11/21/05

- Statistics
- Beam and detector status

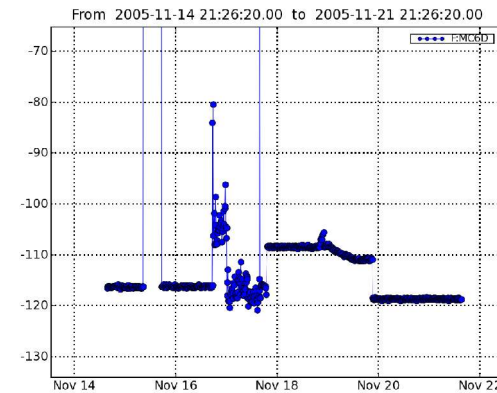
# MIPP Event Statistics

- -20 GeV/c  $\pi^+/\text{K}^+/\text{p}$  beam
- $\text{LH}_2$  target
- 150077 events recorded in 2444 spills with beam
- AD delivered 2528 spills with beam
  - We recorded physics data on 97% of the delivered spills
  - Pressure curves and beam tuning account for the remaining 3%



# MIPP Beam and Detector Status

- Beam last week:
  - Lot of downtime for safety tests, etc.
  - MIPP beamline:
    - MC6D developed a bad connection on a power supply cable. This results in:
      - Bad beam tune
      - Beam momentum shifts
        - Bad for beam pid
    - F:MC7WC1 is not reading out
      - It is being worked on during beam downtime.
- Detector has no significant problems.
  - Steady data taking whenever beam is available.
  - 32 channels of DC2 are not reading out. Very small impact on data quality. Working on fixing this during beam downtime.



# *MIPP Summary*

- MIPP was taking data last week with high efficiency as usual.