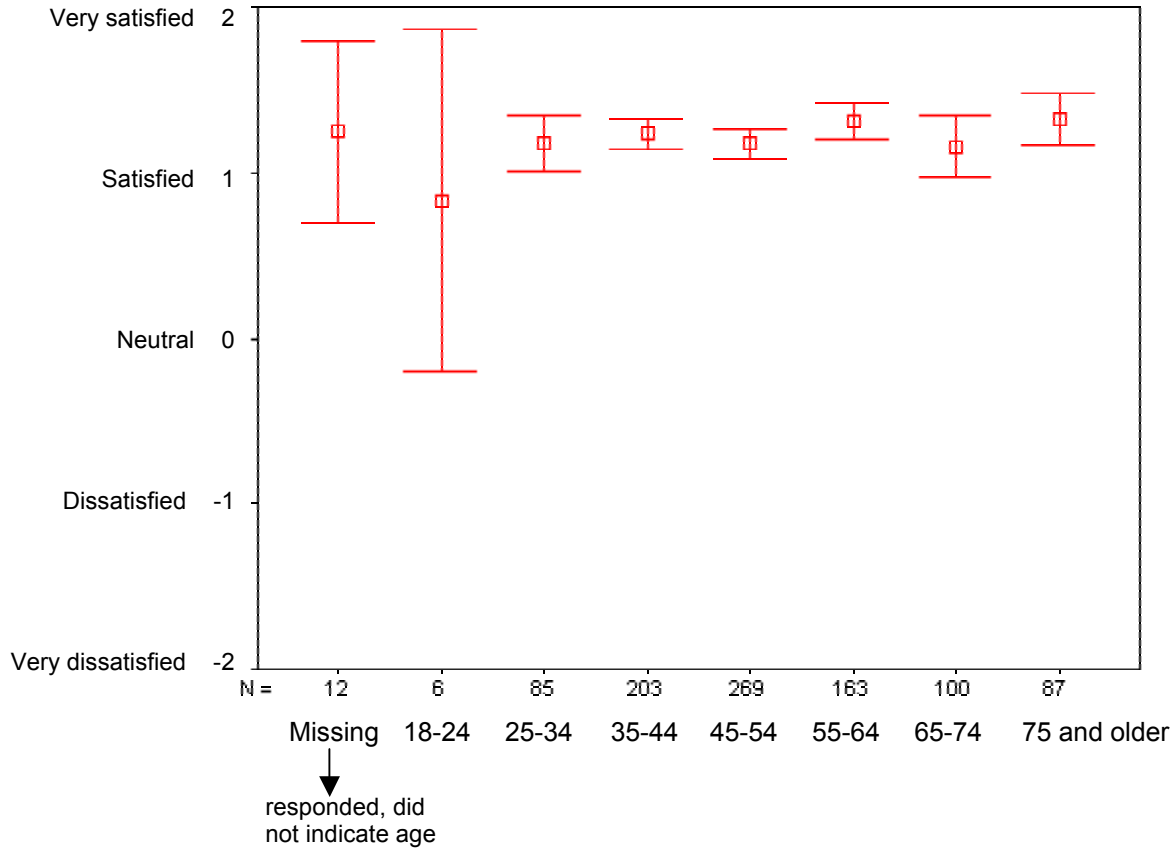


Appendix C

Breakouts by age

1. Q.20. How satisfied are you with you community as a place to live?*

Graph represents the average values and a 95 percent confidence interval.



Note: * Indicates there is not significant difference in responses between age groups.

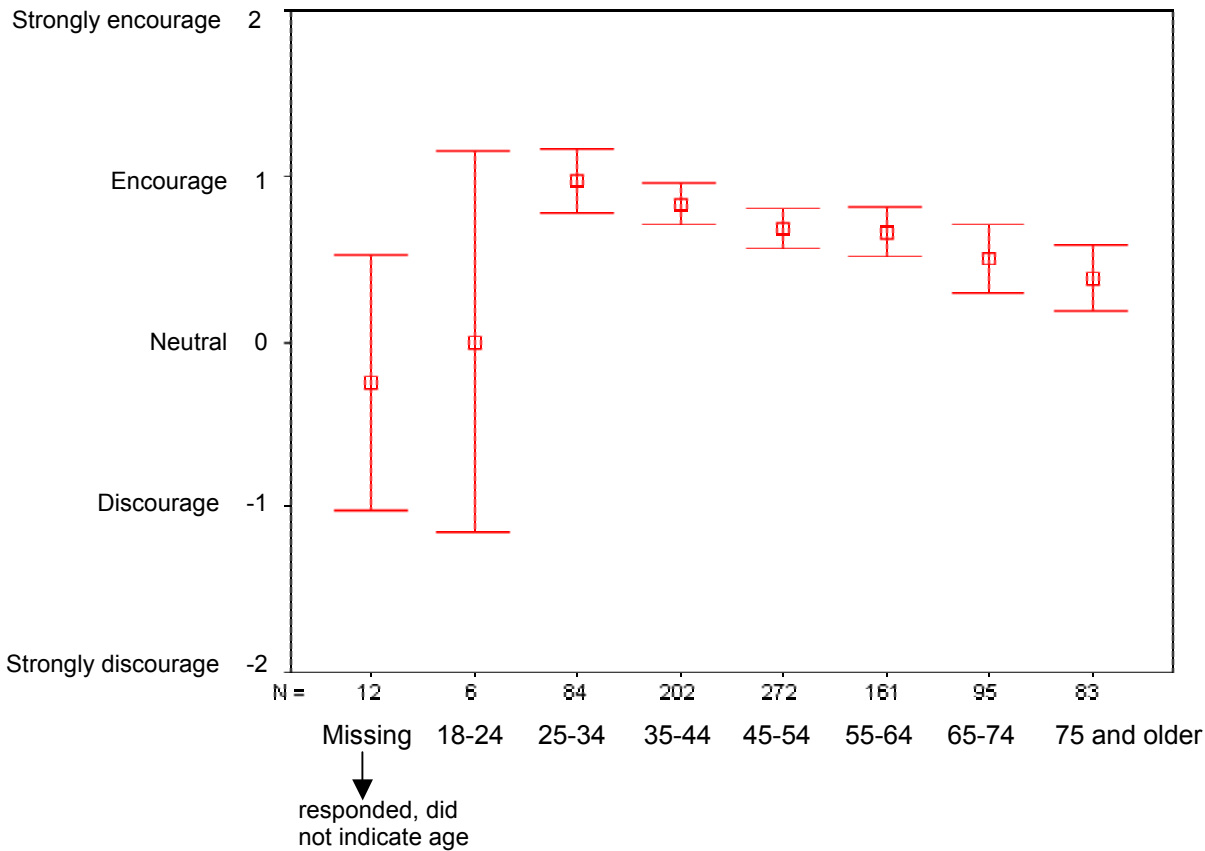
2. Q. 33. To what extent would you encourage or discourage the following kinds of future recreational development in and around your community?

Park space (n=903)

| | Strongly discourage | Discourage | Neutral | Encourage | Strongly encourage |
|--------------------|---------------------|------------|---------|-----------|--------------------|
| 18-24 | 0% | **0% | **0% | 0% | 0% |
| 25-34 | **0% | 1% | 5% | 2% | 1% |
| 35-44 | **0% | 2% | 12% | 4% | 3% |
| 45-54 | 1% | 3% | 16% | 5% | 5% |
| 55-64 | **0% | 2% | 9% | 3% | 4% |
| 65-74 | 1% | 1% | 5% | 1% | 3% |
| 75 years and older | **0% | 1% | 4% | 1% | 3% |

Note: **0 indicates the response was less than 0.5 percent, but greater than zero.

Graph represents the average values and a 95 percent confidence interval.

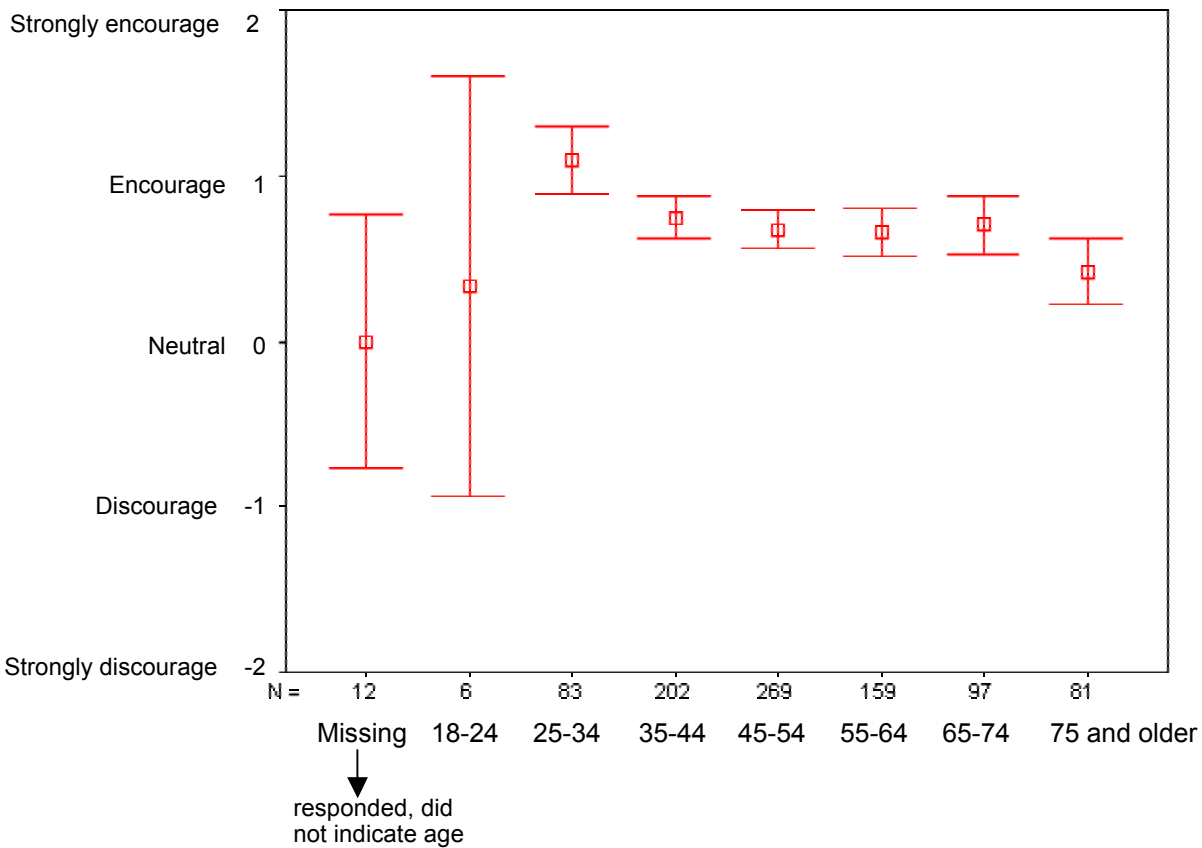


Children's playground facilities (n=897)

| | Strongly discourage | Discourage | Neutral | Encourage | Strongly encourage |
|--------------------|---------------------|------------|---------|-----------|--------------------|
| 18-24 | 0% | **0% | **0% | **0% | **0% |
| 25-34 | **0% | 1% | 1% | 5% | 1% |
| 35-44 | **0% | 2% | 4% | 13% | 4% |
| 45-54 | 1% | 3% | 5% | 17% | 5% |
| 55-64 | **0% | 2% | 5% | 8% | 5% |
| 65-74 | 0% | 1% | 2% | 6% | 2% |
| 75 years and older | **0% | 1% | 3% | 4% | 3% |

Note: **0 indicates the response was less than 0.5 percent, but greater than zero.

Graph represents the average values and a 95 percent confidence interval.

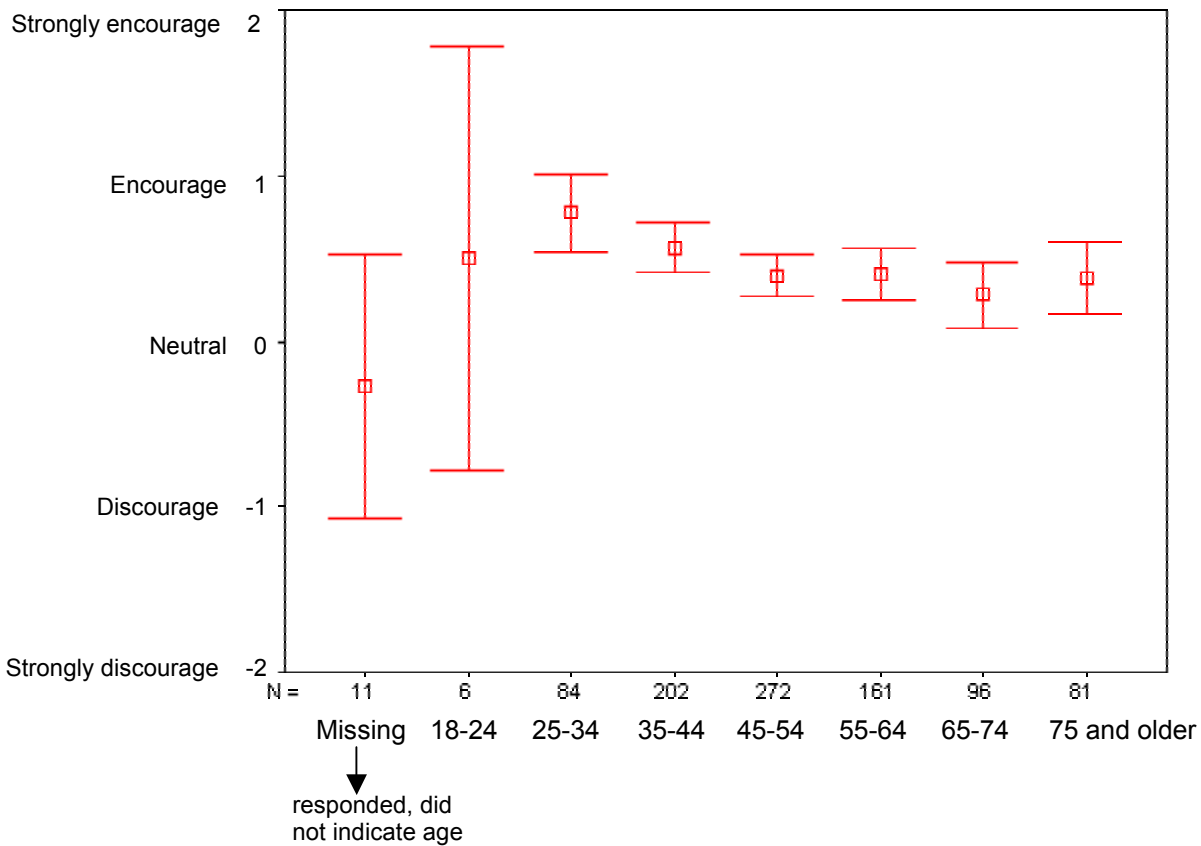


Sports fields (baseball, soccer, etc.) (n=902)

| | Strongly discourage | Discourage | Neutral | Encourage | Strongly encourage |
|--------------------|---------------------|------------|---------|-----------|--------------------|
| 18-24 | 0% | **0% | 0% | **0% | **0% |
| 25-34 | **0% | 1% | 1% | 4% | 2% |
| 35-44 | 1% | 4% | 4% | 9% | 4% |
| 45-54 | 2% | 5% | 6% | 14% | 3% |
| 55-64 | 1% | 3% | 5% | 7% | 2% |
| 65-74 | 1% | 2% | 3% | 5% | 1% |
| 75 years and older | **0% | 2% | 2% | 4% | 1% |

Note: **0 indicates the response was less than 0.5 percent, but greater than zero.

Graph represents the average values and a 95 percent confidence interval.

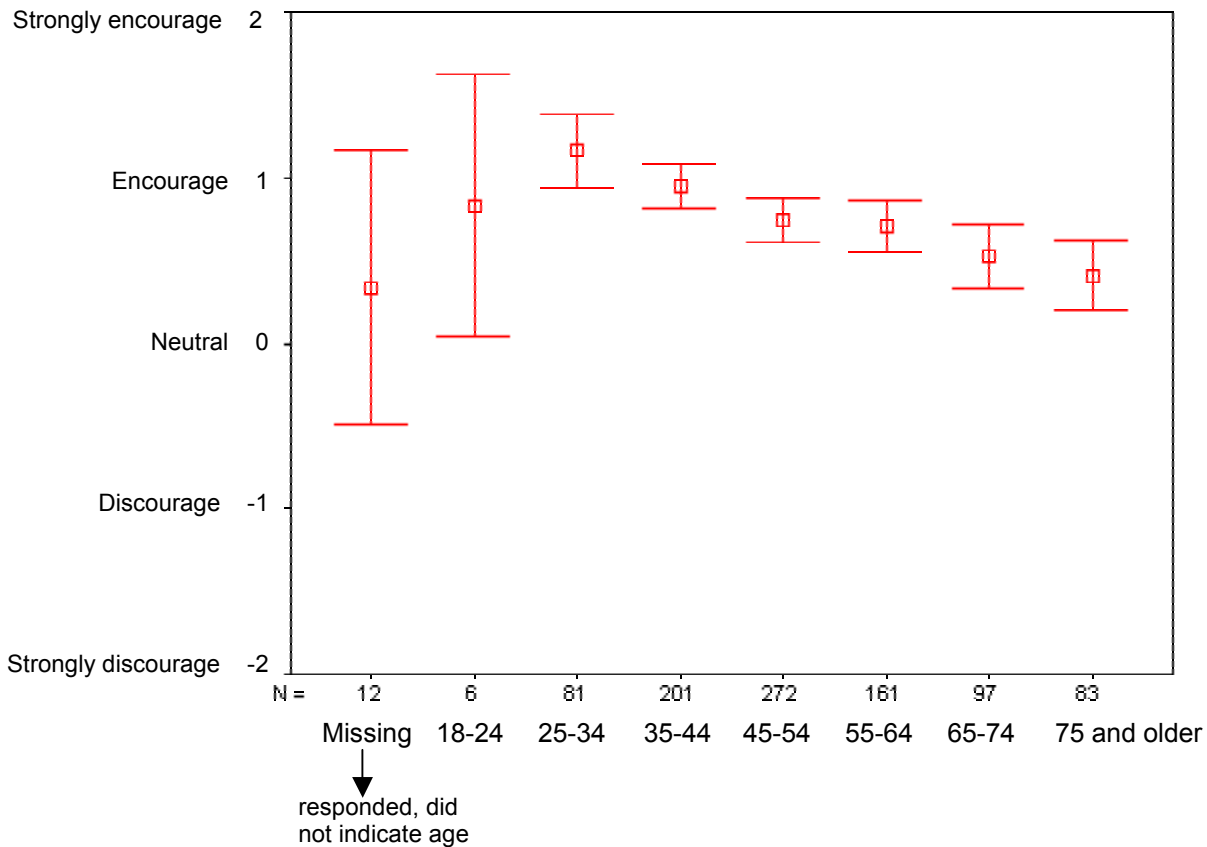


Bicycle and pedestrian paths (n=901)

| | Strongly discourage | Discourage | Neutral | Encourage | Strongly encourage |
|--------------------|---------------------|------------|---------|-----------|--------------------|
| 18-24 | 0% | 0% | **0% | **0% | **0% |
| 25-34 | **0% | **0% | 1% | 4% | 1% |
| 35-44 | **0% | 2% | 3% | 11% | 3% |
| 45-54 | 2% | 3% | 3% | 15% | 3% |
| 55-64 | 1% | 1% | 4% | 8% | 4% |
| 65-74 | 1% | 1% | 3% | 5% | 3% |
| 75 years and older | **0% | 1% | 3% | 4% | 3% |

Note: **0 indicates the response was less than 0.5 percent, but greater than zero.

Graph represents the average values and a 95 percent confidence interval.

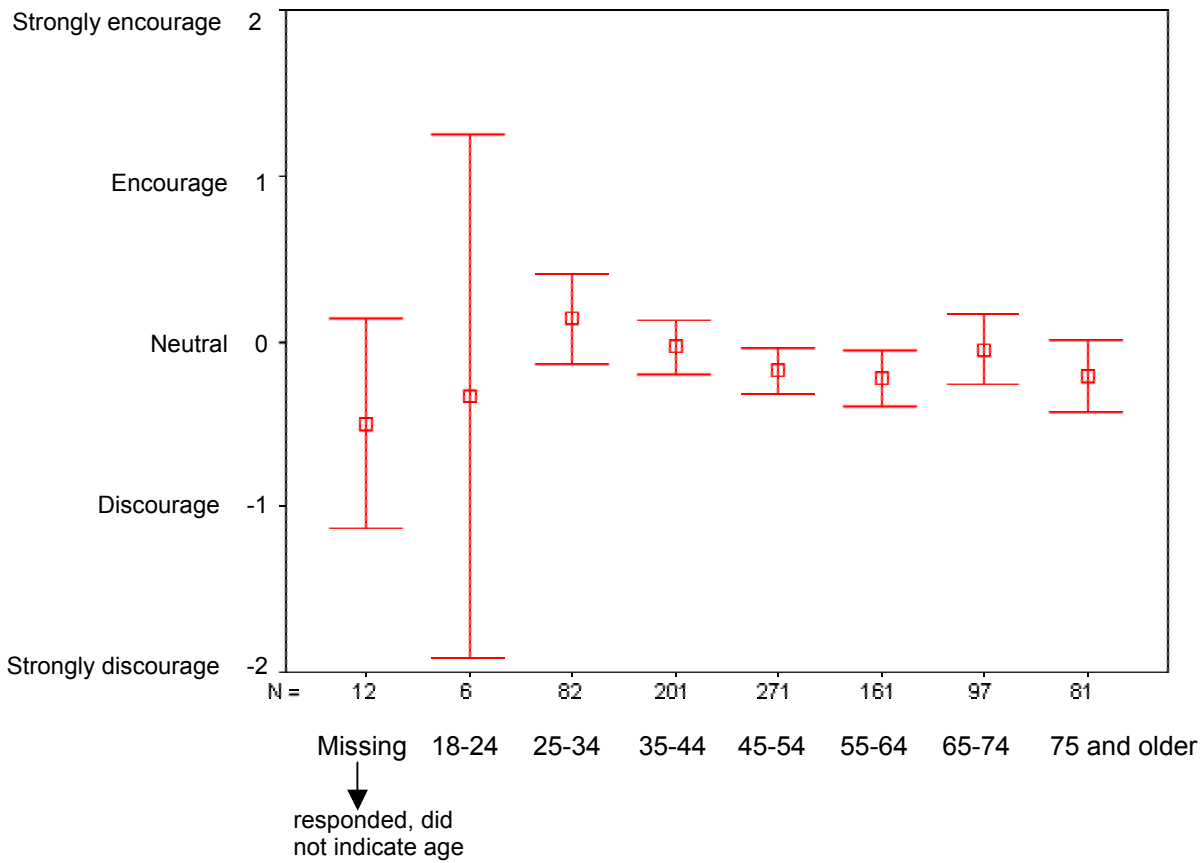


Golf courses (n=899)*

| | Strongly discourage | Discourage | Neutral | Encourage | Strongly encourage |
|--------------------|---------------------|------------|---------|-----------|--------------------|
| 18-24 | **0% | **0% | 0% | **0% | **0% |
| 25-34 | 1% | 2% | 1% | 3% | 1% |
| 35-44 | 2% | 6% | 6% | 6% | 2% |
| 45-54 | 4% | 8% | 8% | 7% | 2% |
| 55-64 | 2% | 5% | 6% | 4% | 1% |
| 65-74 | 1% | 3% | 4% | 3% | 1% |
| 75 years and older | 1% | 3% | 3% | 2% | **0% |

Note: * Indicates there is not significant difference in responses between age groups.
 **0 indicates the response was less than 0.5 percent, but greater than zero.

Graph represents the average values and a 95 percent confidence interval.

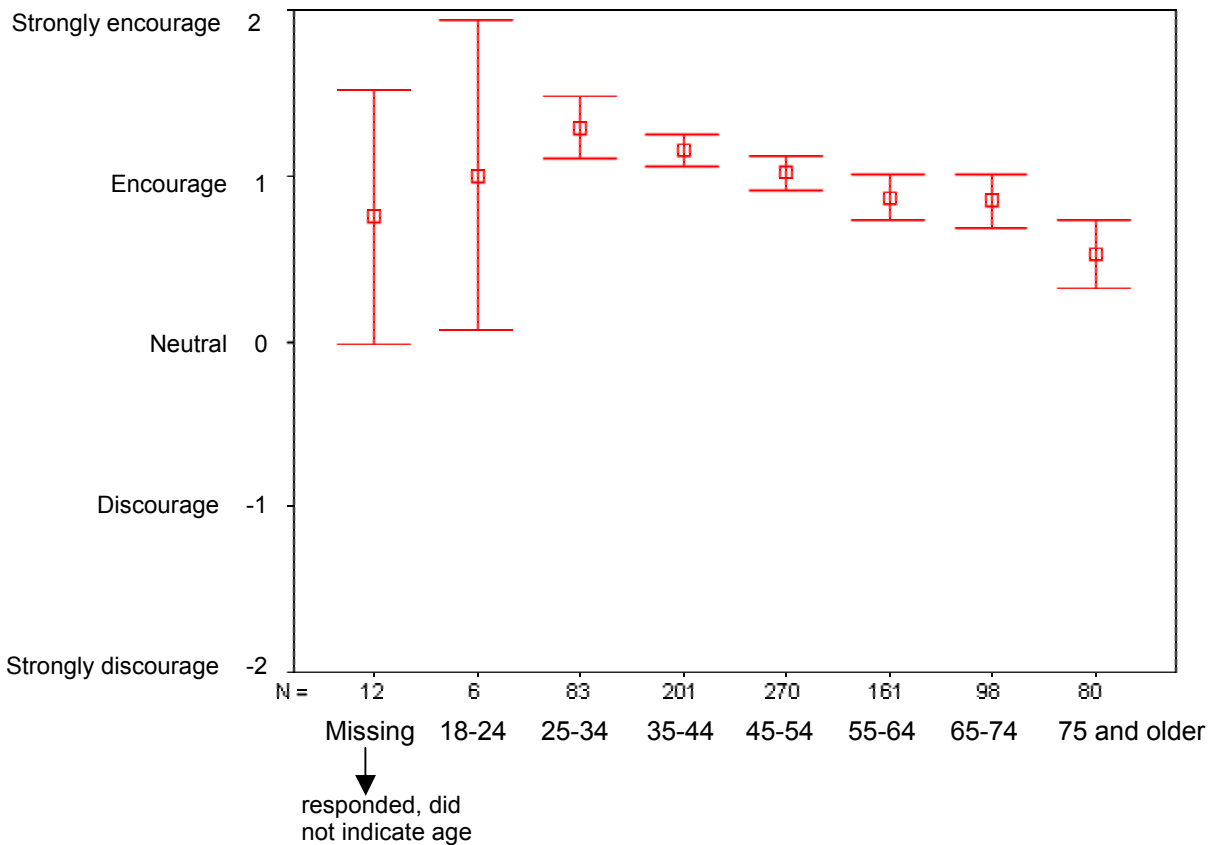


Areas for scenic enjoyment (n=899)

| | Strongly discourage | Discourage | Neutral | Encourage | Strongly encourage |
|--------------------|---------------------|------------|---------|-----------|--------------------|
| 18-24 | 0% | 0% | **0% | **0% | **0% |
| 25-34 | **0% | 0% | 4% | 4% | 1% |
| 35-44 | **0% | **0% | 12% | 7% | 3% |
| 45-54 | **0% | 1% | 16% | 9% | 4% |
| 55-64 | **0% | 1% | 9% | 4% | 4% |
| 65-74 | **0% | **0% | 6% | 2% | 2% |
| 75 years and older | **0% | 1% | 4% | 1% | 3% |

Note: **0 indicates the response was less than 0.5 percent, but greater than zero.

Graph represents the average values and a 95 percent confidence interval.

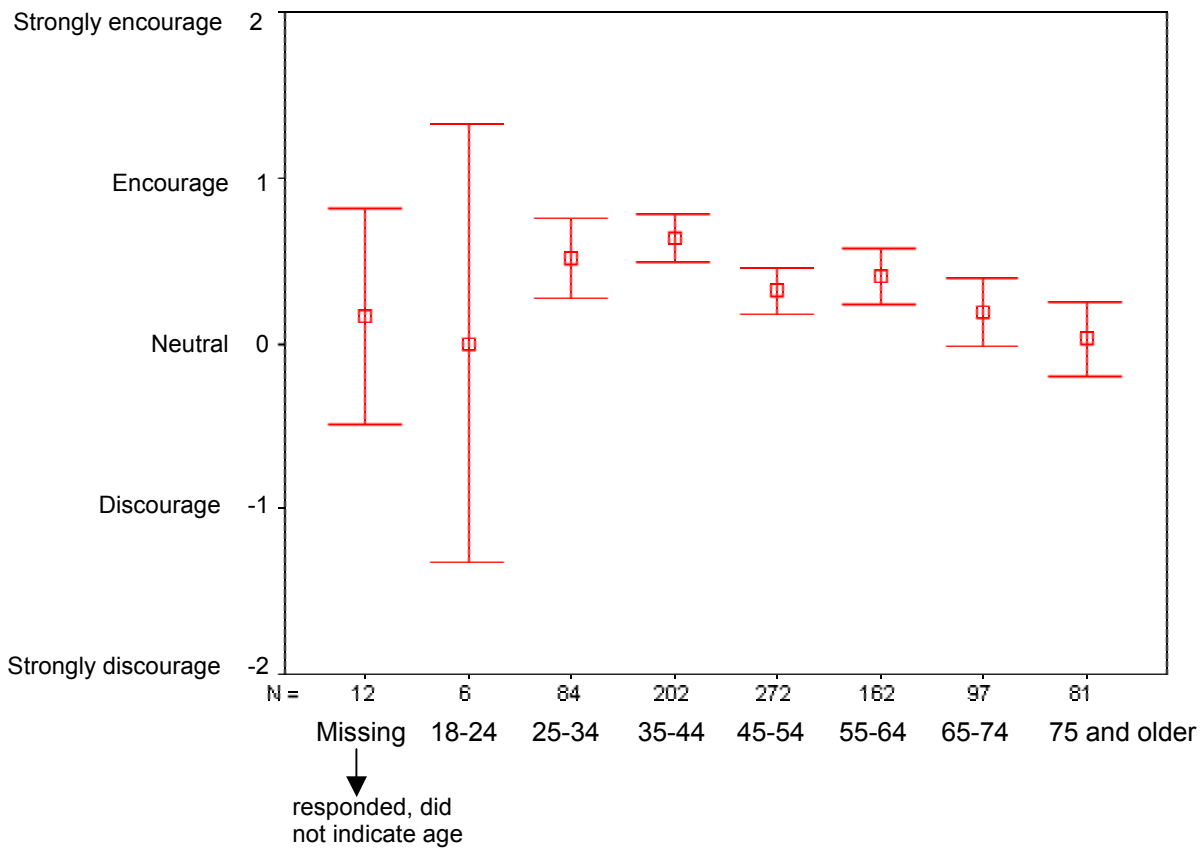


Hunting areas (n=904)

| | Strongly discourage | Discourage | Neutral | Encourage | Strongly encourage |
|--------------------|---------------------|------------|---------|-----------|--------------------|
| 18-24 | **0% | **0% | **0% | 0% | **0% |
| 25-34 | 1% | 1% | 3% | 2% | 3% |
| 35-44 | 1% | 2% | 10% | 5% | 5% |
| 45-54 | 2% | 5% | 11% | 4% | 7% |
| 55-64 | 1% | 2% | 7% | 3% | 5% |
| 65-74 | **0% | 2% | 3% | 1% | 4% |
| 75 years and older | 1% | 2% | 2% | 1% | 4% |

Note: **0 indicates the response was less than 0.5 percent, but greater than zero.

Graph represents the average values and a 95 percent confidence interval.



Fishing areas (n=904)

| | Strongly discourage | Discourage | Neutral | Encourage | Strongly encourage |
|--------------------|---------------------|------------|---------|-----------|--------------------|
| 18-24 | 0% | 0% | **0% | 0% | **0% |
| 25-34 | **0% | **0% | 4% | 2% | 2% |
| 35-44 | **0% | 1% | 11% | 6% | 4% |
| 45-54 | 1% | 2% | 15% | 5% | 7% |
| 55-64 | 1% | 1% | 8% | 3% | 5% |
| 65-74 | **0% | 1% | 5% | 2% | 3% |
| 75 years and older | **0% | 1% | 3% | 1% | 3% |

Note: **0 indicates the response was less than 0.5 percent, but greater than zero.

Graph represents the average values and a 95 percent confidence interval.

