

RECLAMATION

Managing Water in the West

RIO GRANDE PROJECT

El Paso Field Division
10737 Gateway Blvd. West, Suite 350
El Paso, TX 79935



U. S Dept. of the Interior
Bureau of Reclamation

RECLAMATION

Managing Water in the West

RIO GRANDE PROJECT

2008 ANNUAL OPERATING PLAN BRIEFING



U. S Dept. of the Interior
Bureau of Reclamation

RECLAMATION

Managing Water in the West

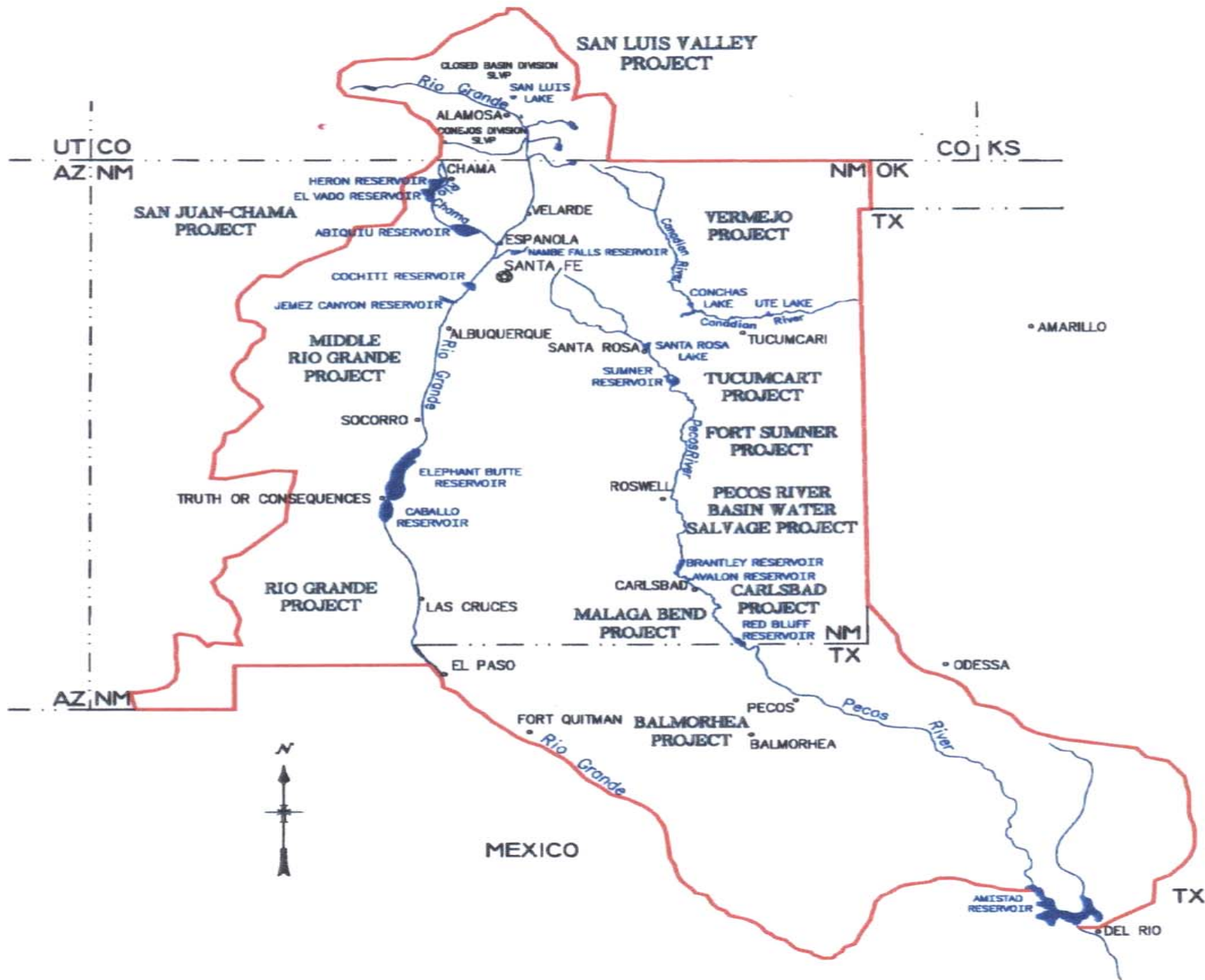
RIO GRANDE PROJECT

CURRENT HYDROLOGIC CONDITIONS OF UPPER RIO GRANDE BASIN

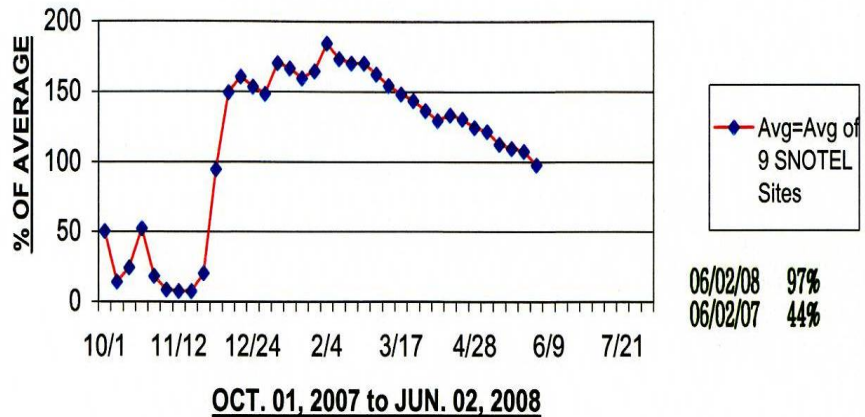


U. S Dept. of the Interior
Bureau of Reclamation

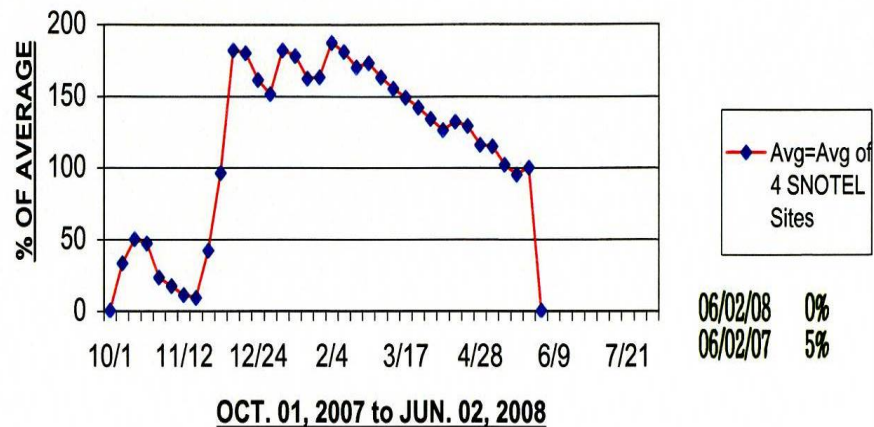
ALBUQUERQUE AREA OFFICE BUREAU OF RECLAMATION



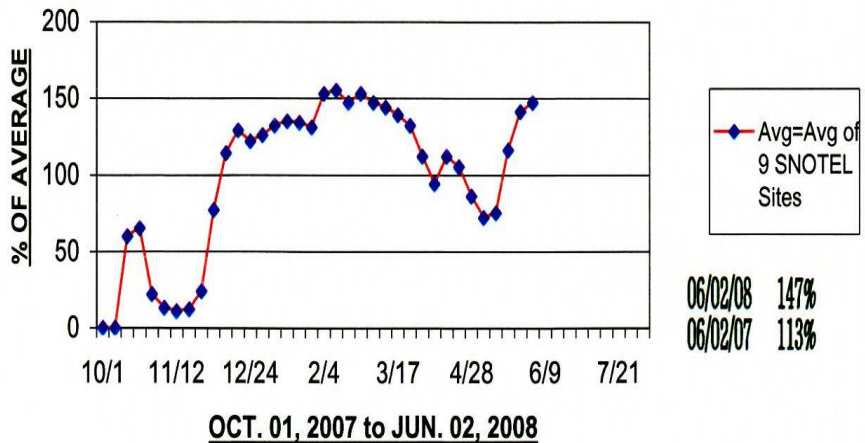
% OF AVG. SNOW WATER EQUIVALENT vs TIME
Upper Rio Grande Basin (Basin Avg.)



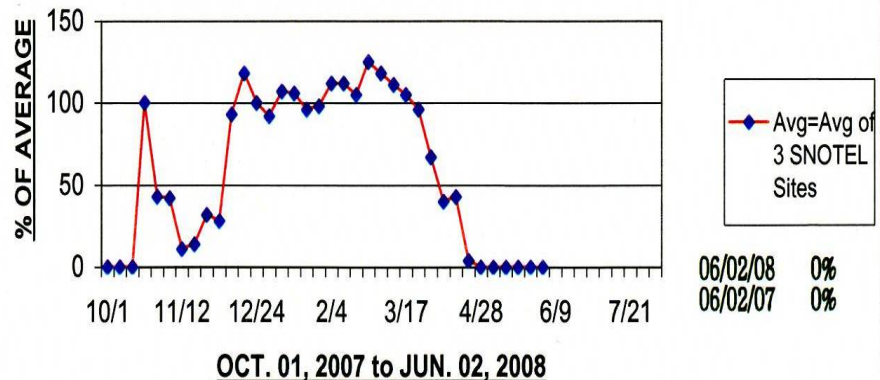
% OF AVG. SNOW WATER EQUIVALENT vs TIME
Rio Chama Basin (Basin Avg.)



% OF AVG. SNOW WATER EQUIVALENT vs TIME
Sangre de Cristo Mtn Basins (Basin Avg.)



% OF AVG. SNOW WATER EQUIVALENT vs TIME
Jemez River Basin (Basin Avg.)



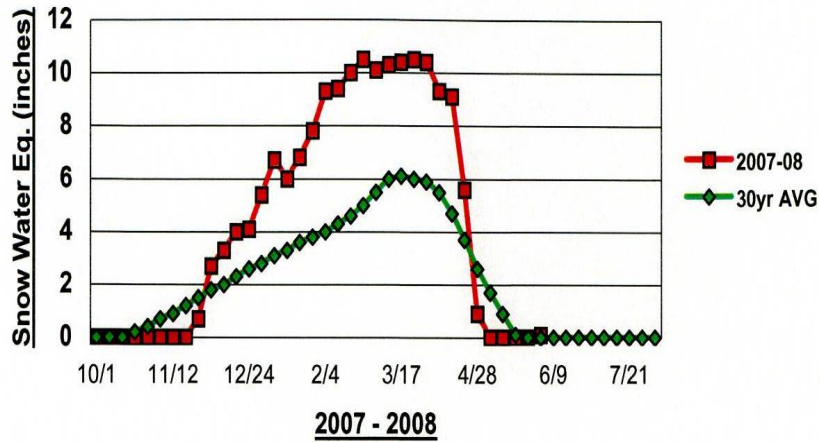






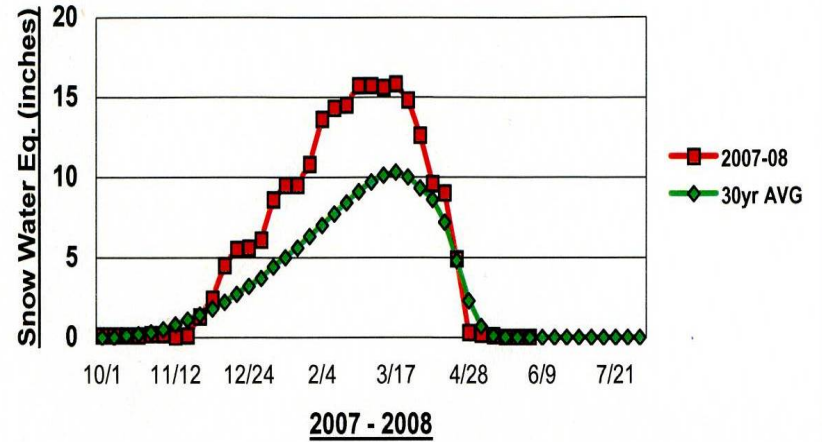
UPPER RIO GRANDE SNOTEL

Elevation: 9,400 FT



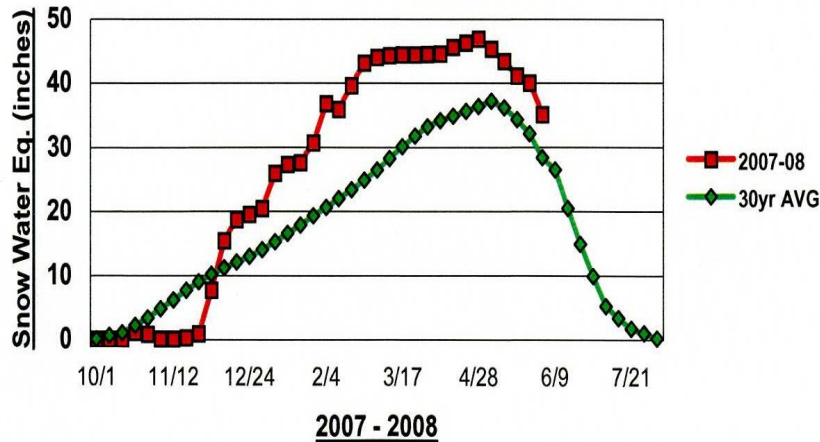
CHAMITA SNOTEL

Elevation: 8,400 FT



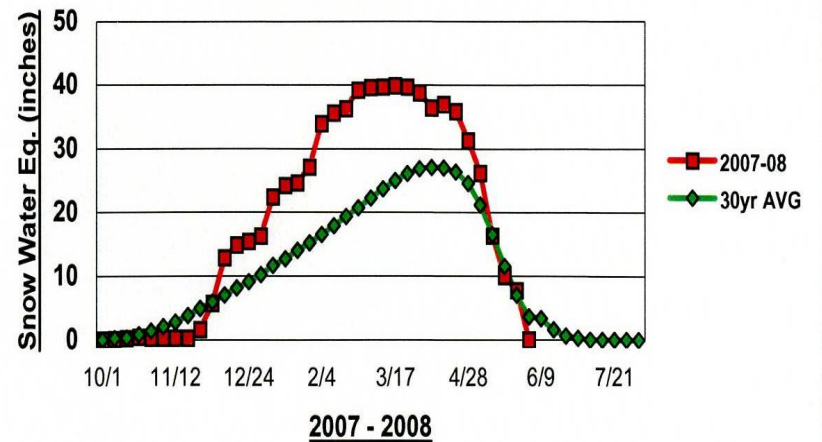
WOLF CREEK SUMMIT SNOTEL

Elevation: 11,000 FT



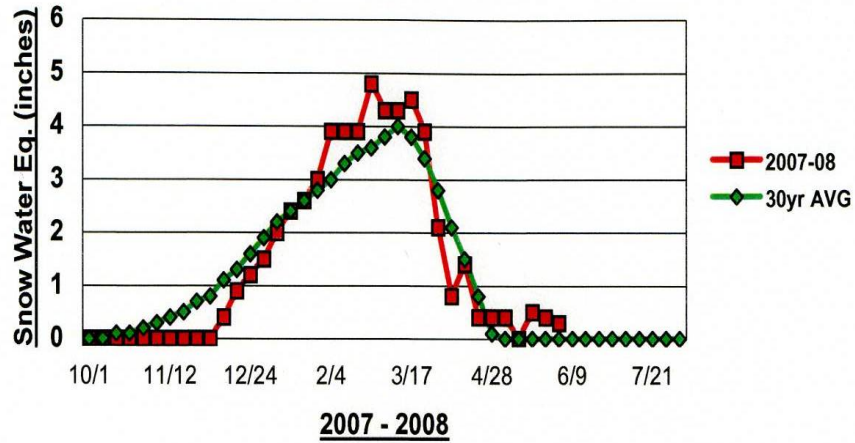
CUMBRES TRESTLE SNOTEL

Elevation: 10,040 FT



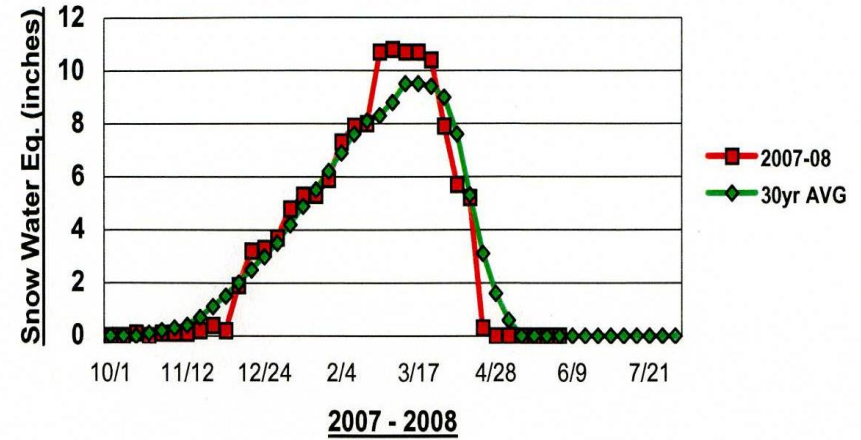
ELK CABIN SNOTEL

Elevation: 8,210 FT



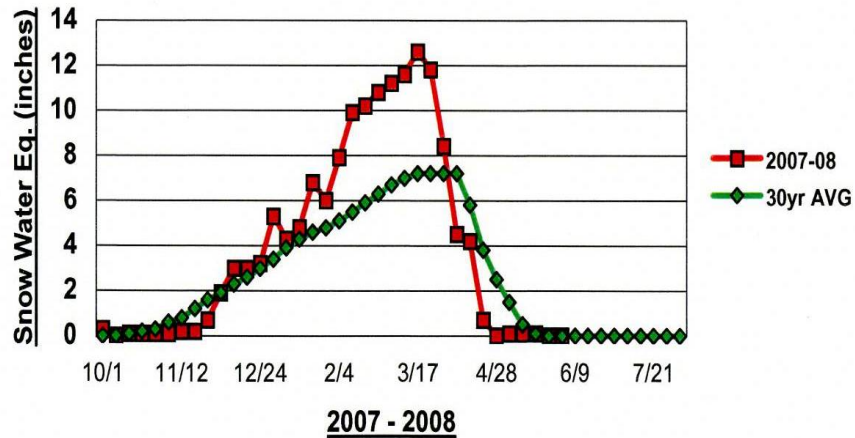
SENORITA DIVIDE #2 SNOTEL

Elevation: 8,600 FT



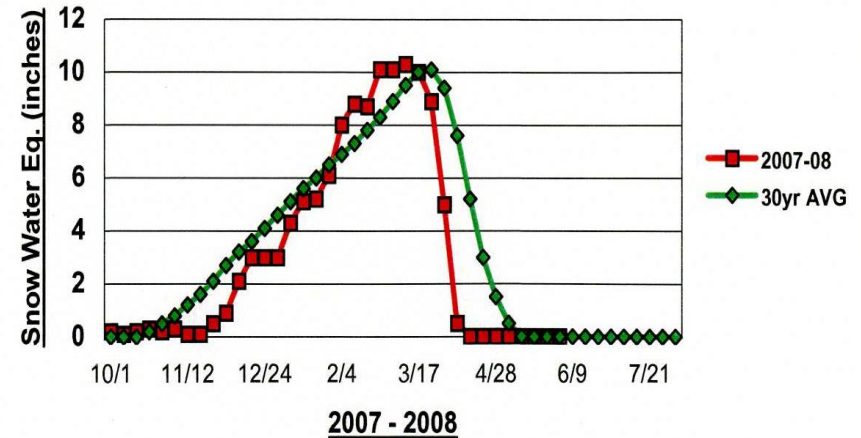
RED RIVER PASS #2 SNOTEL

Elevation: 9,850 FT

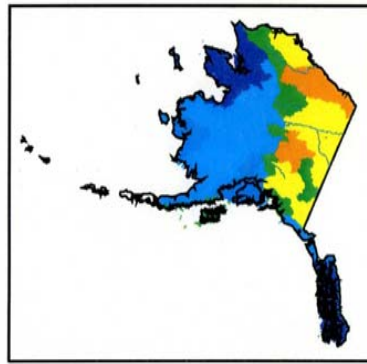


QUEMAZON SNOTEL

Elevation: 9,500 FT

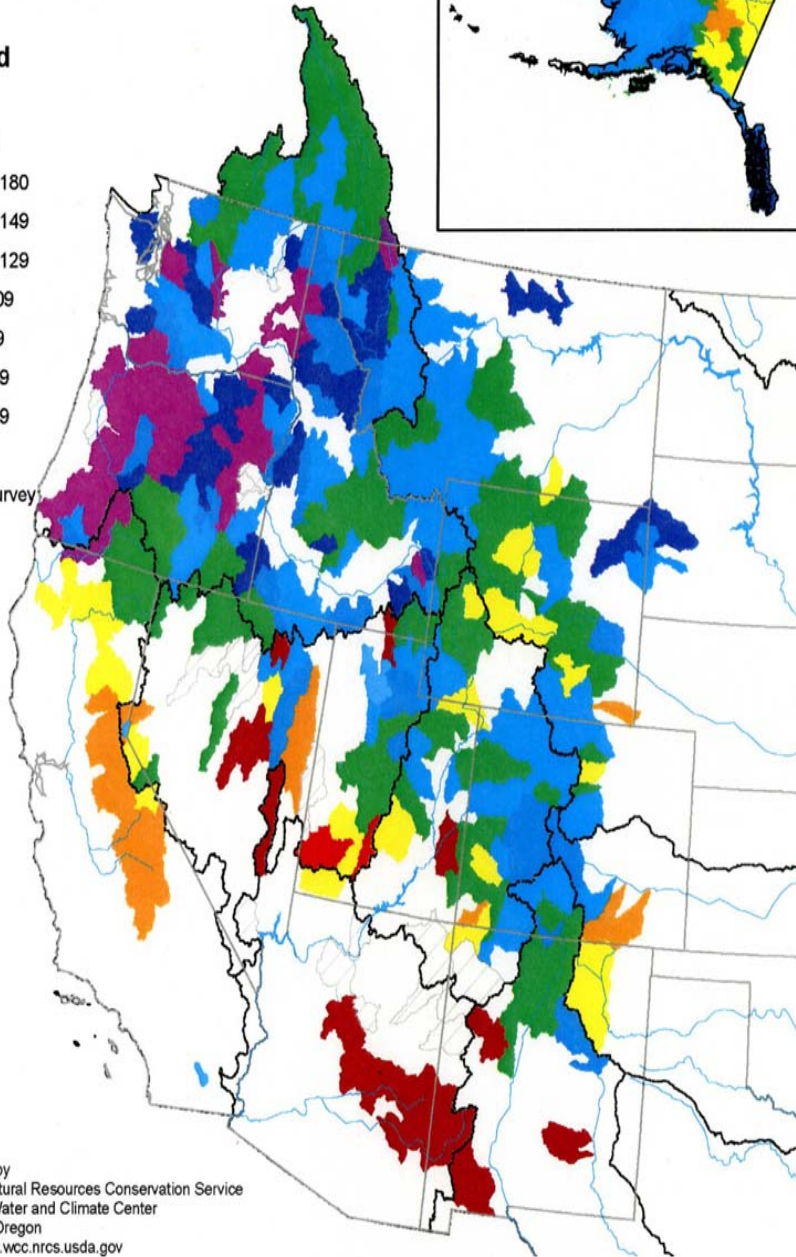
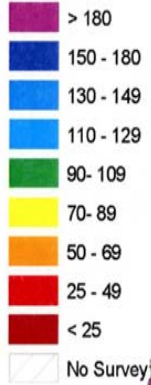


Mountain Snowpack as of May 1, 2008

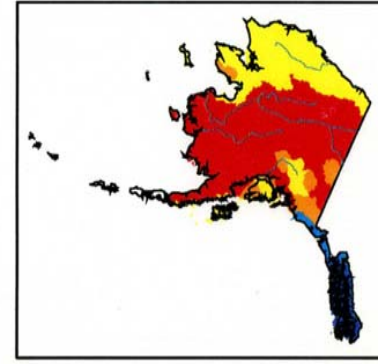


Legend

percent

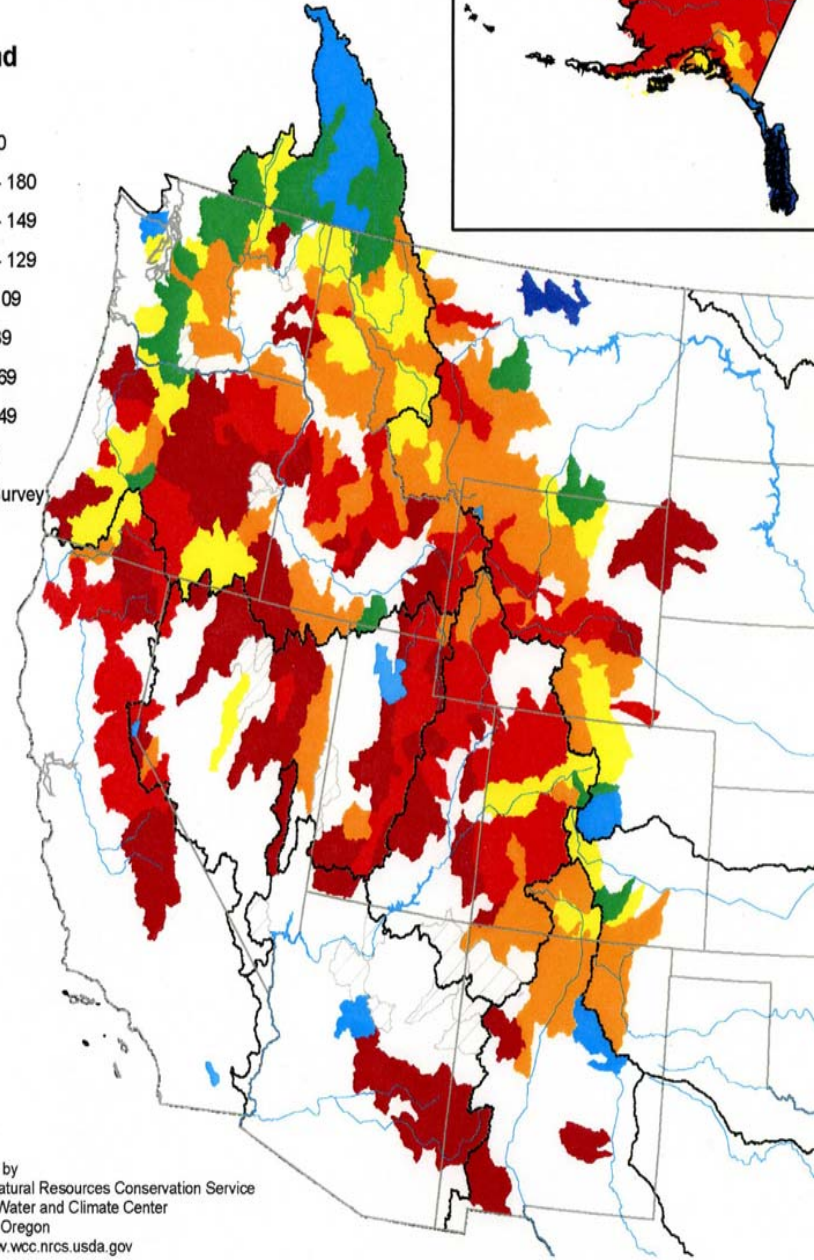
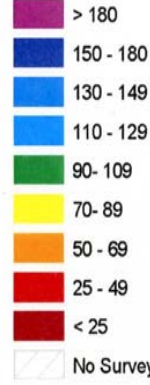


Mountain Snowpack as of May 1, 2007



Legend

percent



SPRING RUNOFF FORECASTS

2008

R I O G R A N D E B A S I N

(ACRE-FEET)

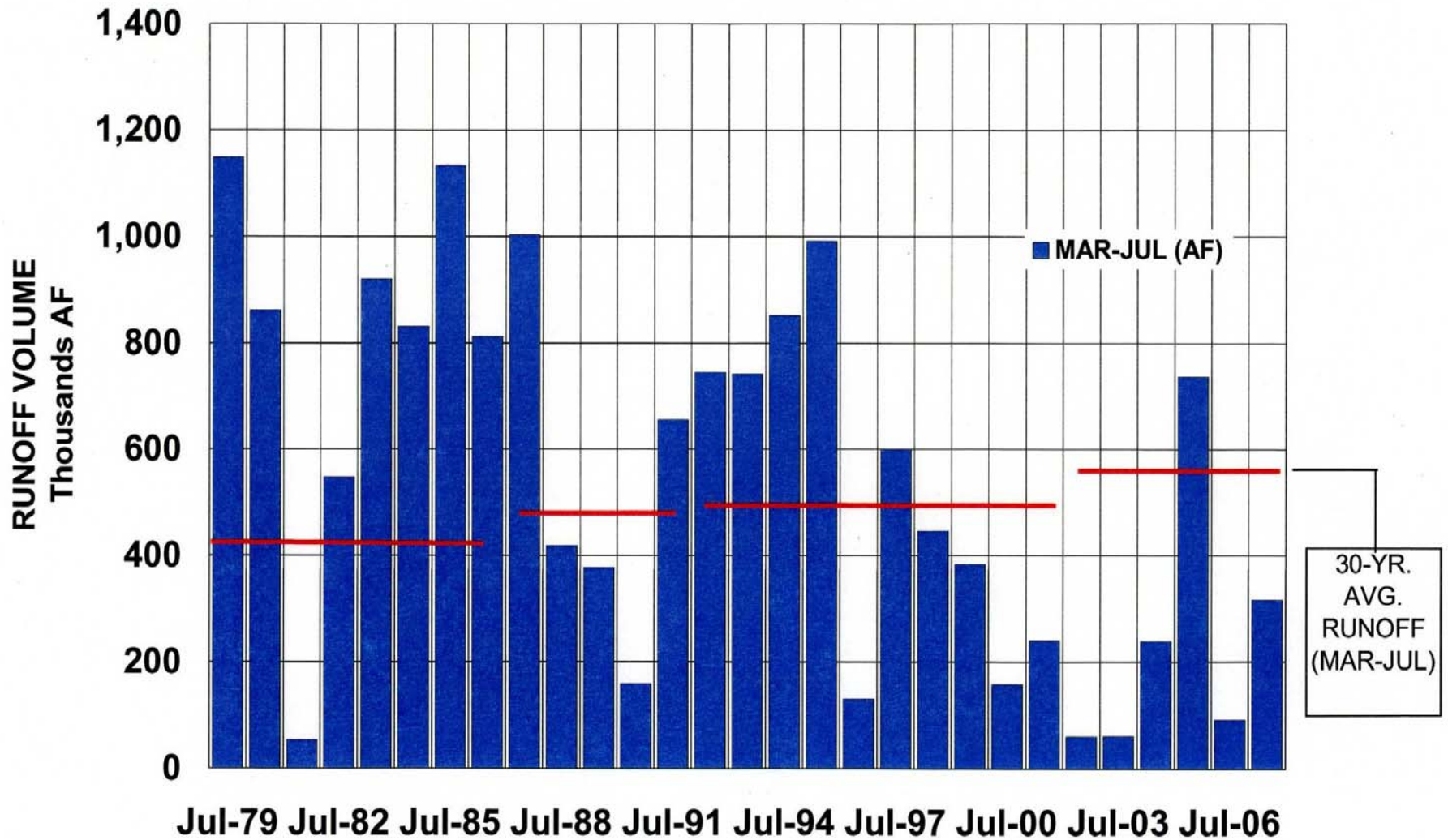
<u>FORECAST POINT</u>	<u>Rio Grande nr Del Norte</u>	<u>Rio Chama at El Vado Reservoir</u>	<u>Rio Grande at Otowi Bridge</u>	<u>Jemez River at Jemez Canyon Reservoir</u>	<u>Rio Grande at San Marcial</u>	
FORECAST PERIOD	APR-SEP	MAR-JUL	MAR-JUL	MAR-JUL	MAR-JUL	
30-YEAR AVERAGE RUNOFF *	531,000	237,000	757,000	45,000	573,000	
JANUARY 1 FORECAST	690,000 130%	295,000 124%	940,000 124%	36,000 80%	750,000 131%	
FEBRUARY 1 FORECAST	790,000 149%	390,000 165%	1,300,000 172%	50,000 111%	1,050,000 183%	
MARCH 1 FORECAST	850,000 160%	400,000 169%	1,380,000 182%	52,000 116%	1,150,000 201%	
APRIL 1 FORECAST	745,000 140%	375,000 158%	1,170,000 155%	41,000 91%	980,000 171%	
MAY 1 FORECAST **	680,000 128%	330,000 139%	1,040,000 137%	36,000 80%	695,000 121%	
	MAY 1, 2007	385,000 73%	149,000 63%	450,000 59%	29,000 64%	255,000 45%

* based on 1971-2000 runoff data.

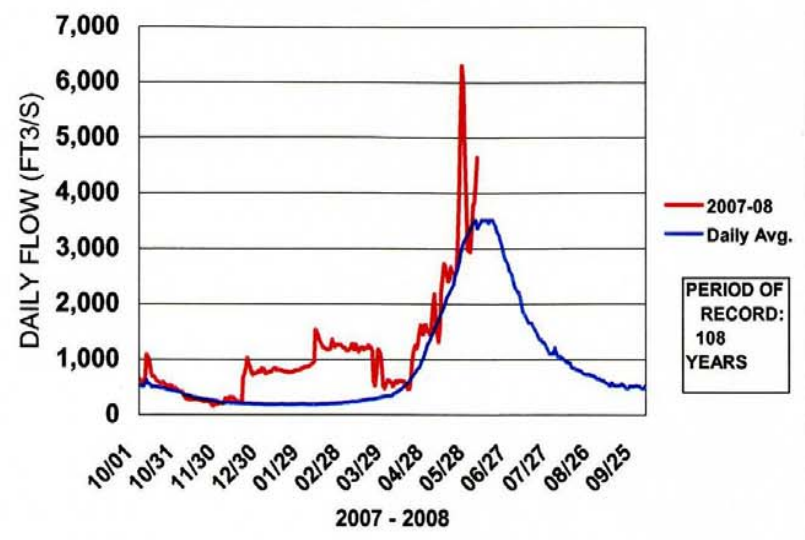
** last official forecast for 2008 spring runoff.

HISTORICAL RUNOFF - SAN MARCIAL

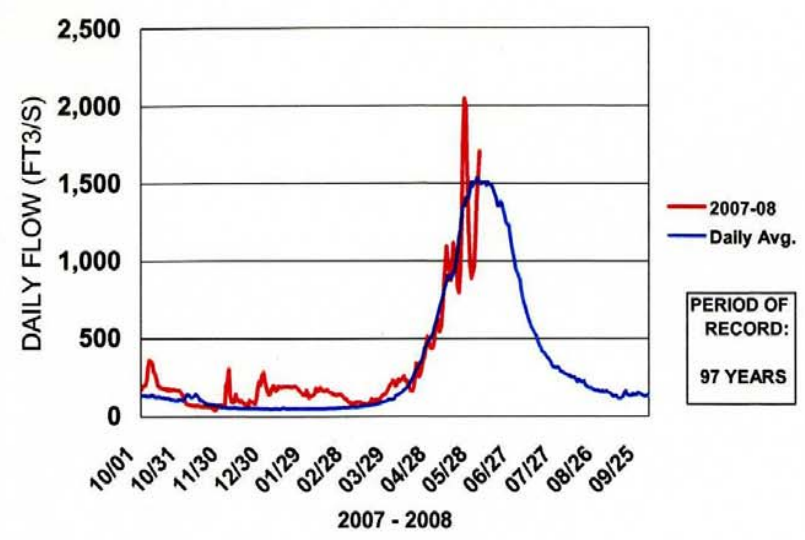
1979 - 2007



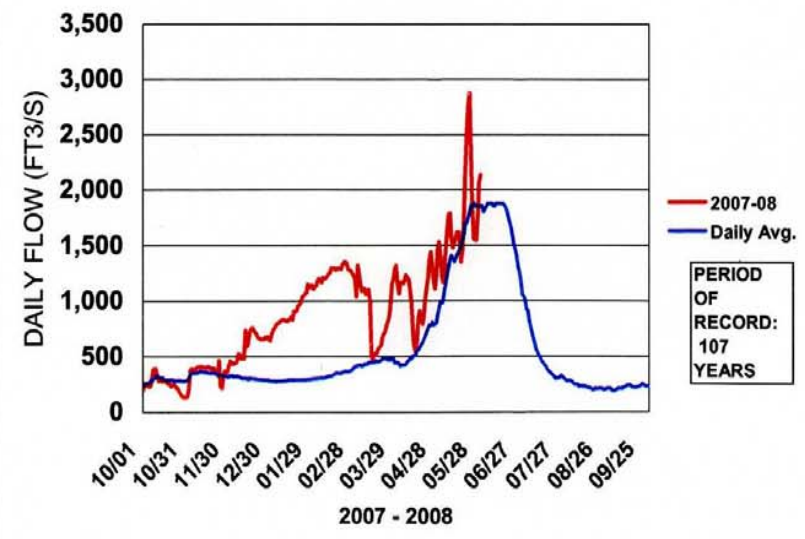
RIO GRANDE NEAR DEL NORTE, CO



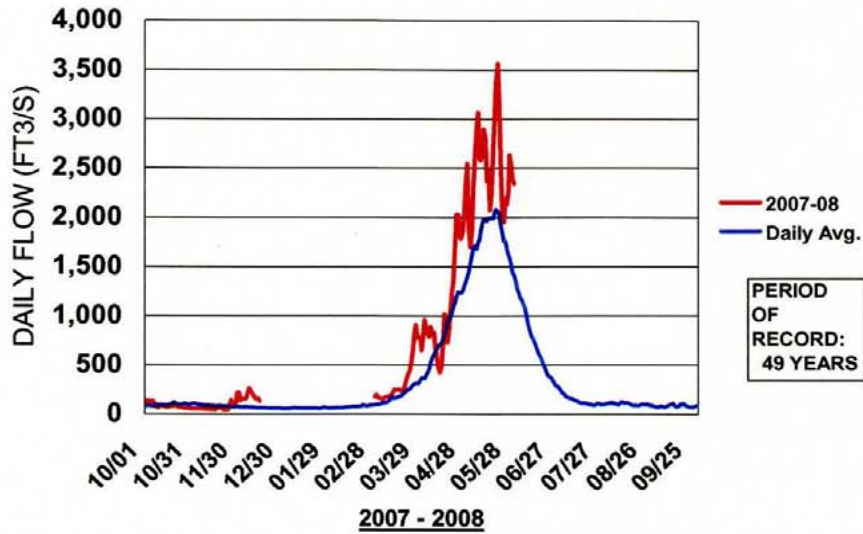
CONEJOS RIVER NEAR MOGOTE, CO



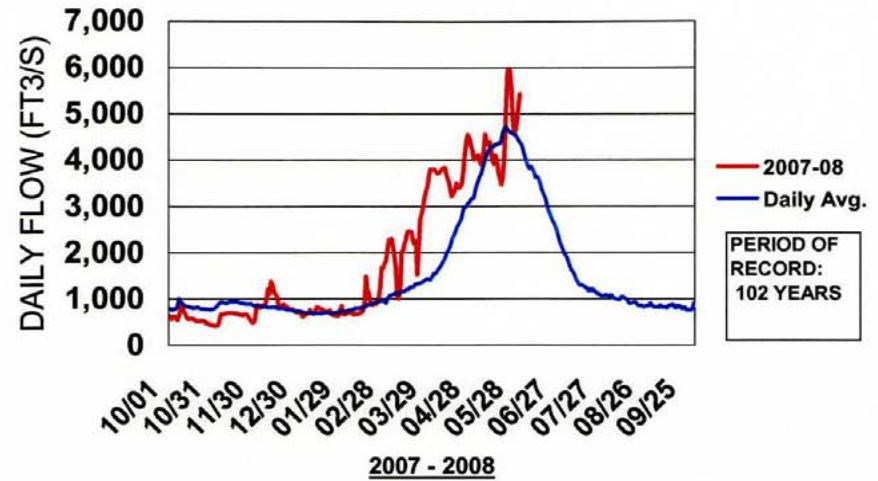
RIO GRANDE NEAR LOBATOS, CO



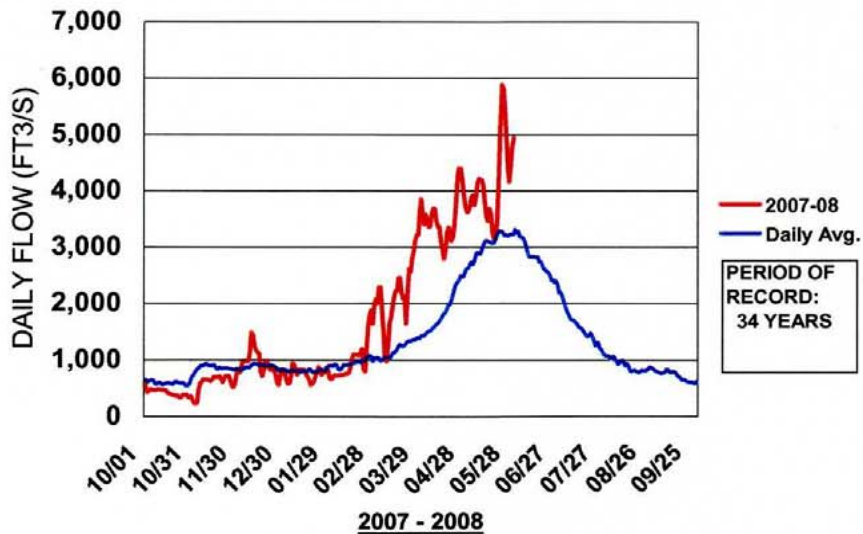
RIO CHAMA NEAR LA PUENTE, NM



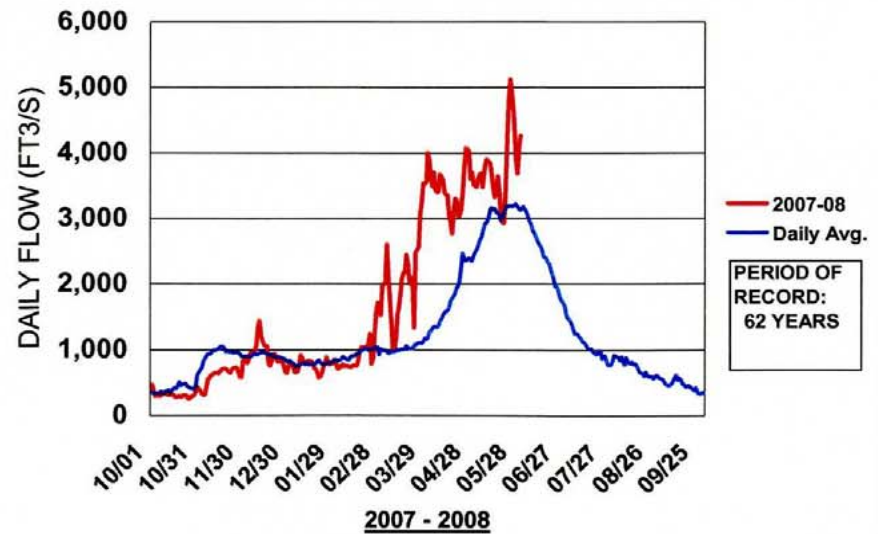
RIO GRANDE AT OTOWI BRIDGE, NM



RIO GRANDE BLW COCHITI DAM, NM



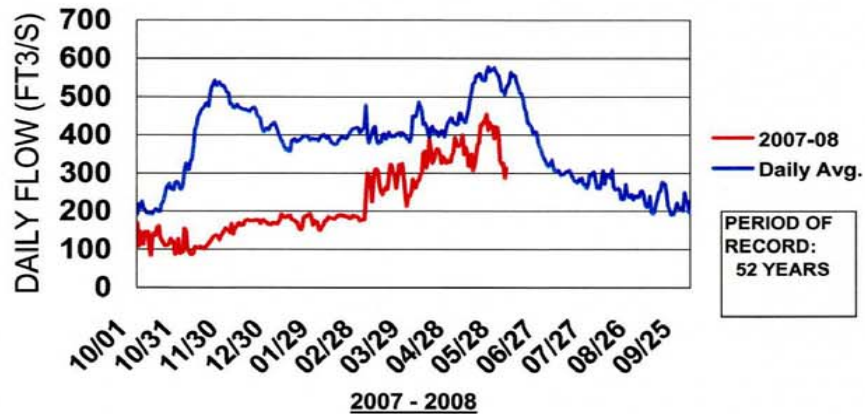
RIO GRANDE AT ALBUQUERQUE, NM



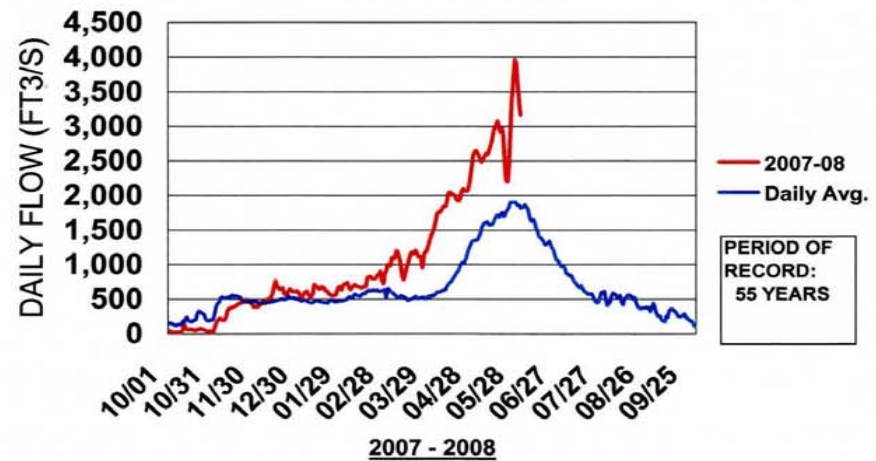




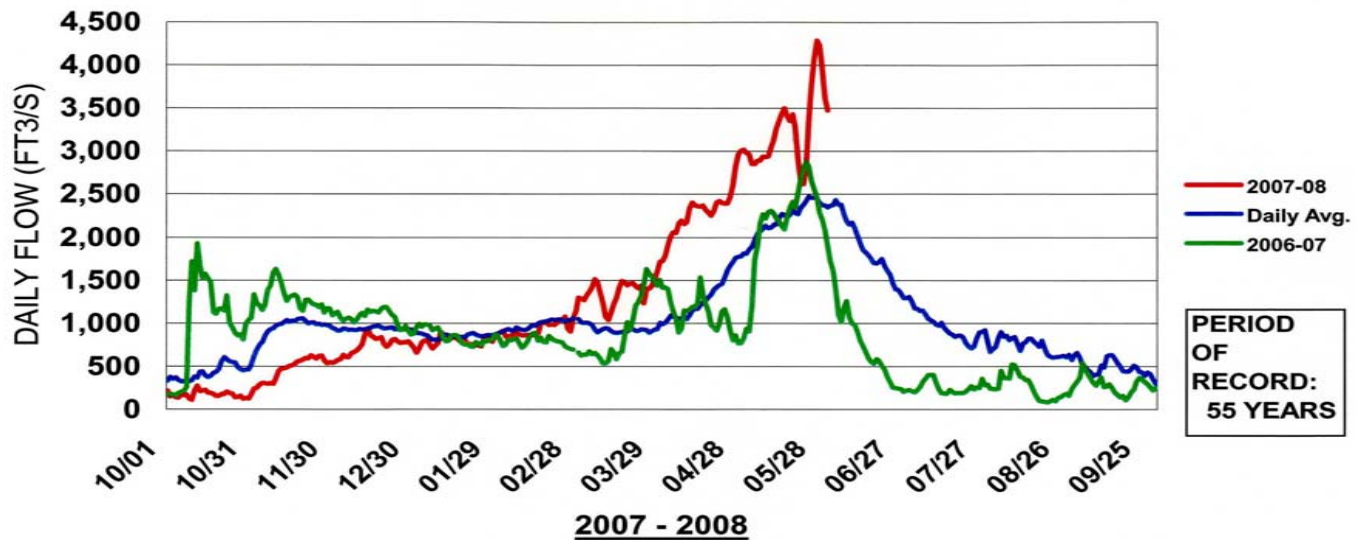
RIO GRANDE AT SAN MARCIAL, NM LOW FLOW CONVEYANCE CHANNEL



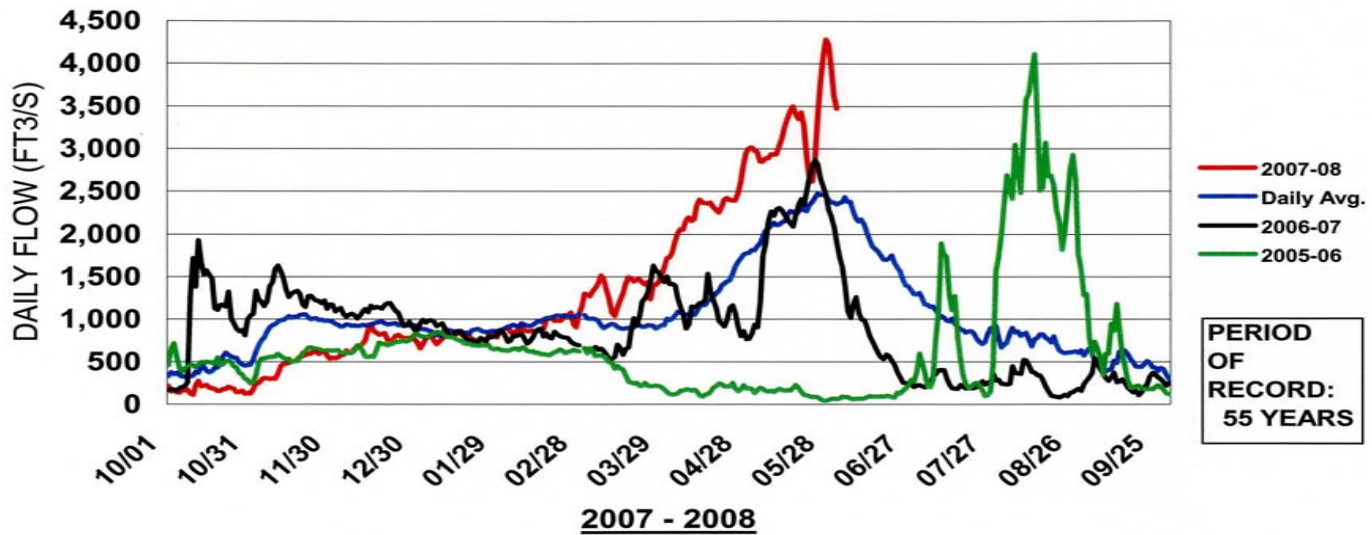
RIO GRANDE AT SAN MARCIAL, NM FLOODWAY



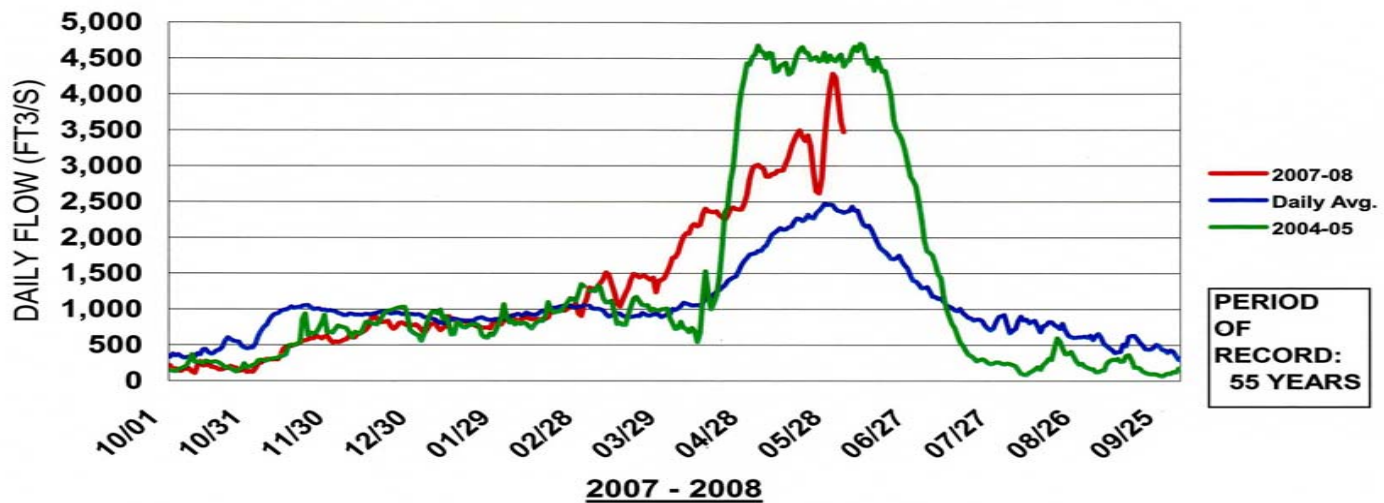
RIO GRANDE AT SAN MARCIAL, NM COMBINED GAUGING STATIONS



RIO GRANDE AT SAN MARCIAL, NM COMBINED GAUGING STATIONS



RIO GRANDE AT SAN MARCIAL, NM COMBINED GAUGING STATIONS



RECLAMATION

Managing Water in the West

RIO GRANDE PROJECT

INFLOW TO ELEPHANT BUTTE RESERVOIR AT SAN MARCIAL STATIONS

2007			2008					
Oct	Nov	Dec	Jan	Feb	Mar	Apr	May	Total
10,217	27,189	44,941	48,363	53,726	84,367	137,429	199,521	605,753
Avg. 30,000	59,000	60,000	47,000	48,000	60,000	120,000	195,000	619,000

Mar.-Jul. 2007 = 55.3% of average (316,976 AF)

Mar. 2008 – May 2008 = 112.4% of average

Oct. 2007 – Feb. 2008 = 75.6% of average

Projected Mar. 2008 – Jul. 2008 = 132.0% of average

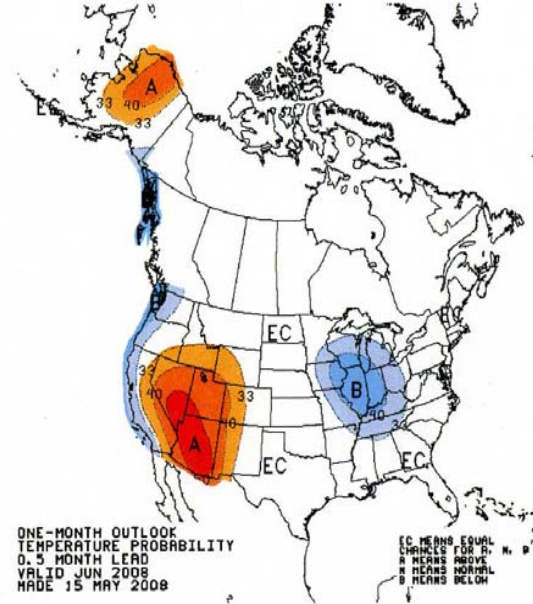
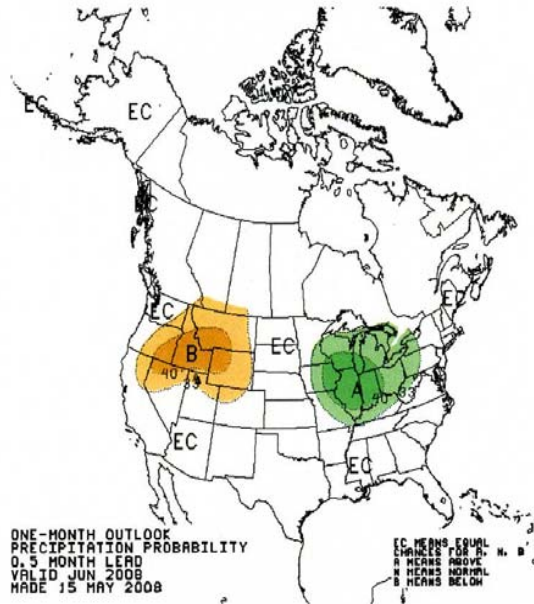
2008

Precipitation

Temperature

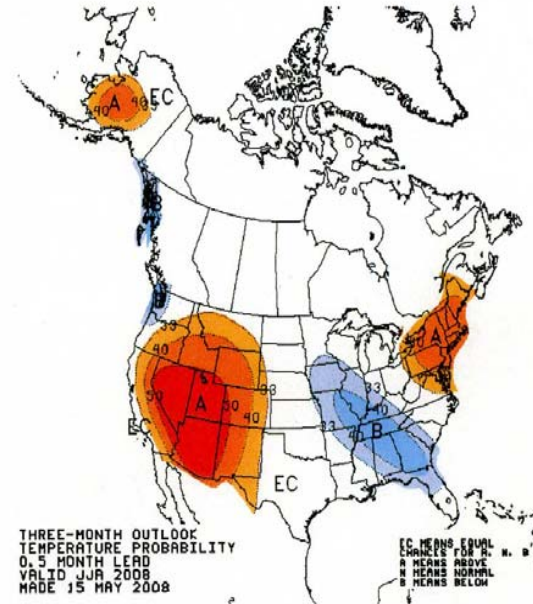
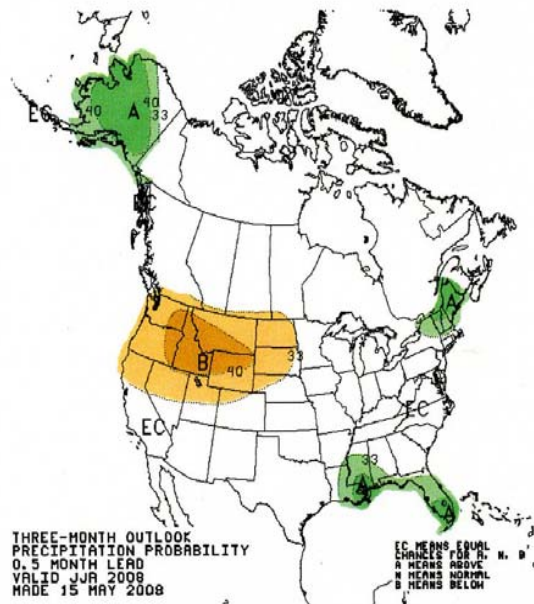
Jun08

Jun08



Jun08-
Aug08

Jun08-
Aug08



RECLAMATION

Managing Water in the West

RIO GRANDE PROJECT

CURRENT RESERVOIR CONDITIONS



U. S Dept. of the Interior
Bureau of Reclamation

BUREAU OF RECLAMATION
RIO GRANDE PROJECT
EL PASO, TX

2008 OPERATIONAL DATA STATUS

ELEPHANT BUTTE RESERVOIR			RESERVOIR WATER SURFACE ELEVATION (feet)	FEET BELOW SPILLWAY CREST (feet)	RESERVOIR TOTAL STORAGE (acre-feet)	PERCENT OF FULL RESERVOIR (%)	RESERVOIR WATER SURFACE AREA (acres)	PERCENT OF FULL RESERVOIR SURFACE AREA (%)
TODAY'S DATE:	Wednesday, June 04, 2008		4348.34	58.66	619,442	31.39%	14,496	41.18%
2007 HIGH POINT:	Monday, March 26, 2007		4347.76	59.24	611,063	30.58%	14,395	40.45%
2007 LOW POINT:	Wednesday, October 24, 2007		4324.40	82.60	323,488	16.19%	10,270	28.85%
<i>Gates Closed Oct. 25, 2007</i>								
2006 LOW POINT:	Friday, July 28, 2006		4308.50	98.50	183,875	9.32%	7,228	20.54%
2005 LOW POINT:	Saturday, January 01, 2005		4309.94	97.06	194,426	9.73%	7,426	20.86%
2004 LOW POINT:	Friday, September 24, 2004		4294.04 *	112.96	94,615	4.79%	4,935	14.02%

* We haven't been this low at Elephant Butte Reservoir since November 1978.

CABALLO RESERVOIR			RESERVOIR WATER SURFACE ELEVATION (feet)	FEET BELOW SPILLWAY CREST (feet)	RESERVOIR TOTAL STORAGE (acre-feet)	PERCENT OF FULL RESERVOIR (%)	RESERVOIR WATER SURFACE AREA (acres)	PERCENT OF FULL RESERVOIR SURFACE AREA (%)
TODAY'S DATE:	Wednesday, June 04, 2008		4145.36	27.08	47,059	20.76%	3,814	40.78%
2007 HIGH POINT:	Wednesday, May 23, 2007		4151.88	20.56	76,662	33.82%	5,243	56.07%
2007 LOW POINT:	Tuesday, October 16, 2007		4132.72	39.72	13,287	5.86%	1,814	19.39%
<i>Gates Closed Oct. 26, 2007.</i>								
2006 FALL LOW PT.:	Sunday, October 08, 2006		4141.98	30.46	35,351	15.60%	3,121	33.37%
<i>Gates Closed Oct. 10, 2006.</i>								
2005 LOW POINT:	Thursday, October 13, 2005		4131.26	41.18	10,744	4.74%	1,670	17.86%
<i>Gates Closed Oct. 14, 2005.</i>								
2004 GATES CLOSED:	Tuesday, September 28, 2004		4134.10	38.34	15,883	7.01%	1,949	20.84%

** Feet below top of conservation pool.

RECLAMATION

Managing Water in the West

RIO GRANDE PROJECT

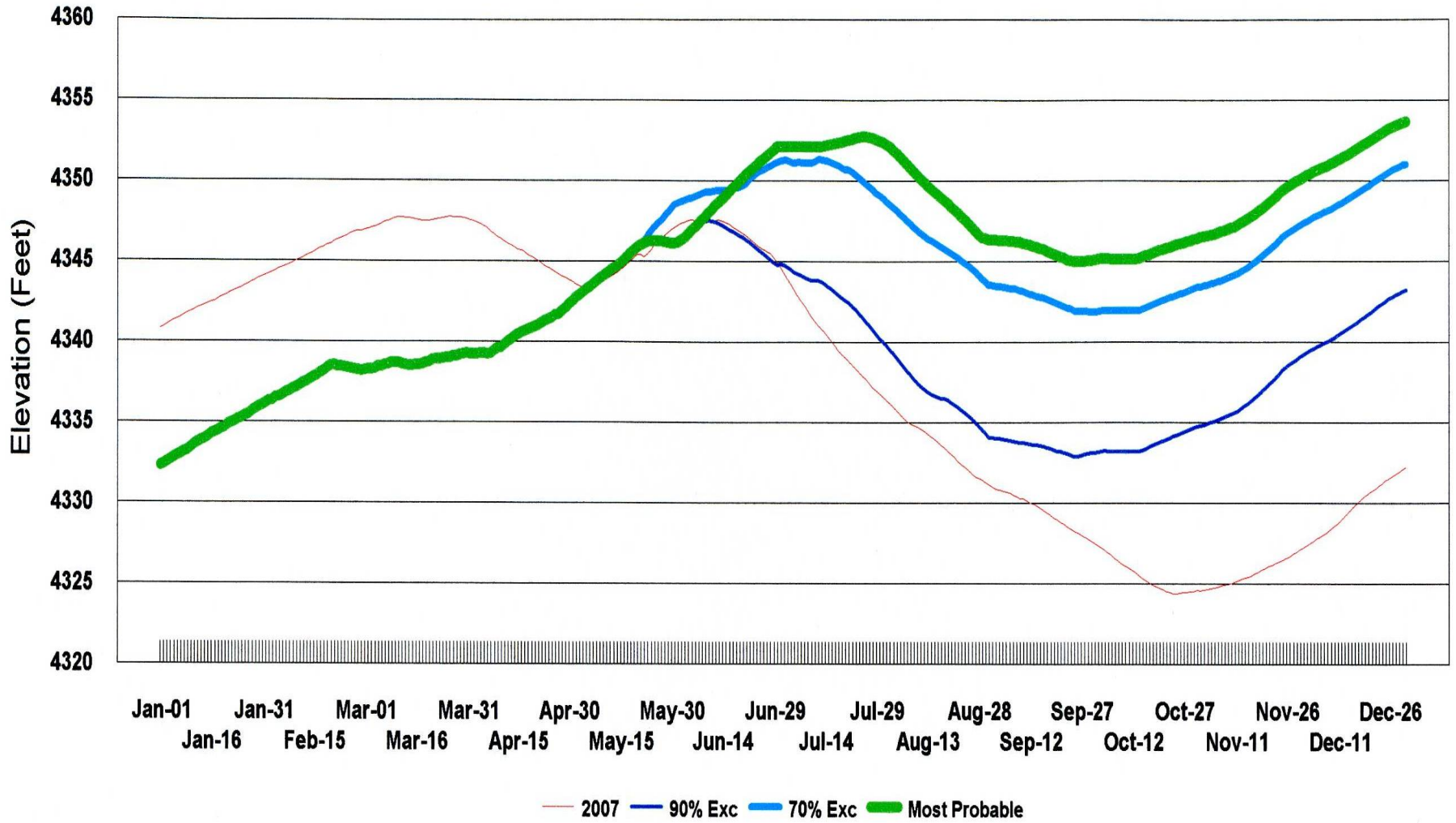
2008 RESERVOIR OPERATIONS AND PROJECT WATER SUPPLY



U. S Dept. of the Interior
Bureau of Reclamation

ELEPHANT BUTTE RESERVOIR

2008 PROJECTED ELEVATION*

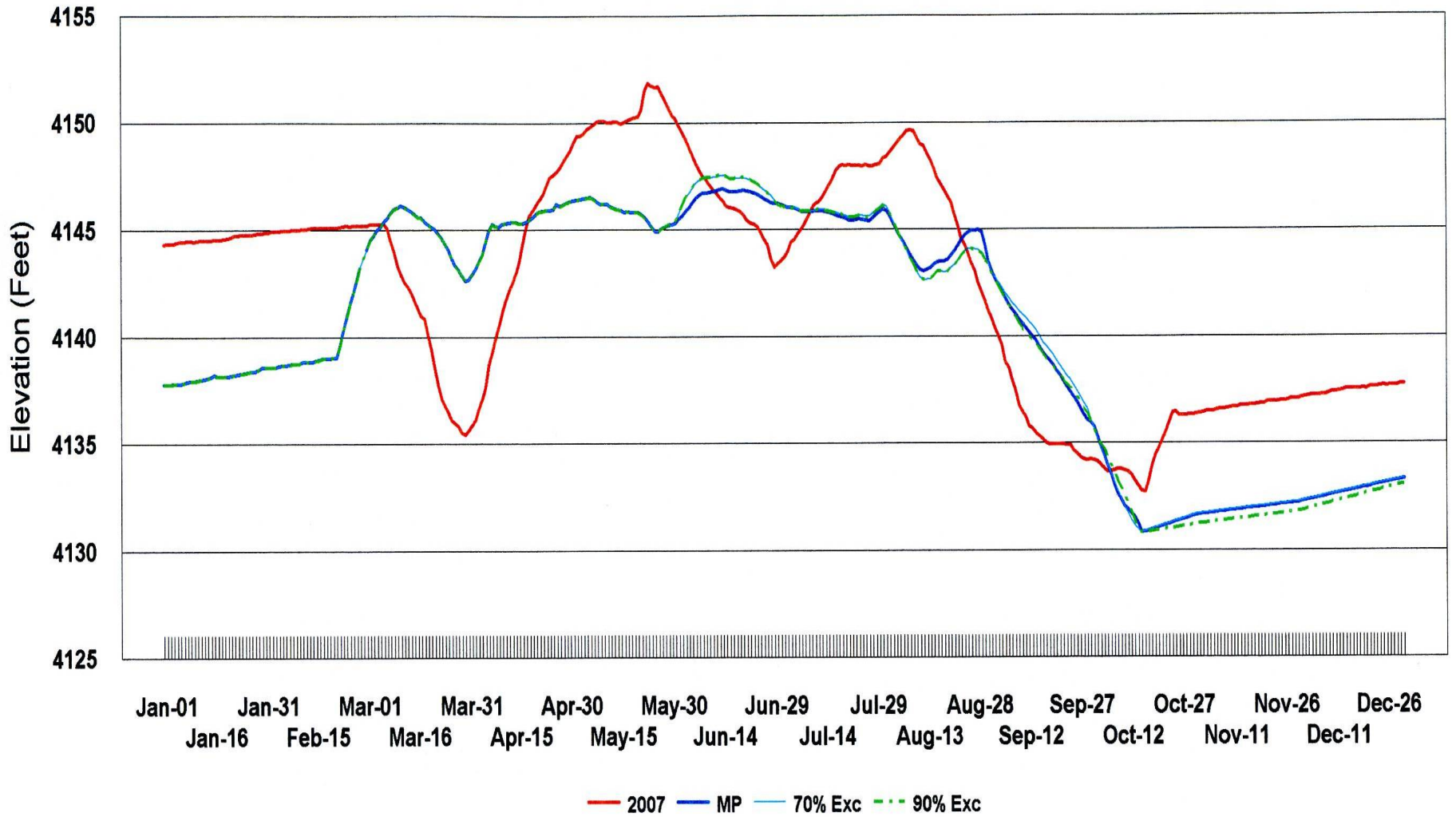


*Actual data thru May 11; other data is a projection..

*Based on Rio Grande Project runs dated May 12, 2008

CABALLO RESERVOIR

2008 PROJECTED ELEVATION*



* Actual data through May 20; other data is a projection.

*Based on Rio Grande Project runs dated May 21.

CABALLO RESERVOIR

2008 PROJECTED OUTFLOW (cfs)*



* Actual data through May 12; other data is a projection.

*Based on Rio Grande Project runs dated May 12.

RECLAMATION

Managing Water in the West

RIO GRANDE PROJECT

2008 PROJECT
ALLOCATION



U. S Dept. of the Interior
Bureau of Reclamation

2008 Rio Grande Project Allocation

Initial Allocation - End of December, 2007

(letter issued Jan. 18, 2008)

Mexico	10,711 AF
Elephant Butte Irrigation District	59,928 AF
El Paso County Water Improvement District # 1	<u>154,901 AF</u>
[24.20% of a full supply]	225,540 AF *

Updated Allocation - End of January, 2008

(letter issued Feb. 21, 2008)

Mexico	26,935 AF
Elephant Butte Irrigation District	151,859 AF
El Paso County Water Improvement District # 1	<u>232,339 AF</u>
[44.12% of a full supply]	411,133 AF *

Updated Allocation - End of February, 2008

(letter issued Mar. 20, 2008)

Mexico	31,519 AF
Elephant Butte Irrigation District	169,877 AF
El Paso County Water Improvement District # 1	<u>258,634 AF</u>
[49.37% of a full supply]	460,030 AF *

Updated Allocation - End of March, 2008

(letter issued Apr. 17, 2008)

Mexico	38,773 AF
Elephant Butte Irrigation District	198,384 AF
El Paso County Water Improvement District # 1	<u>300,239 AF</u>
[57.67% of a full supply]	537,396 AF *

Updated Allocation - End of April, 2008

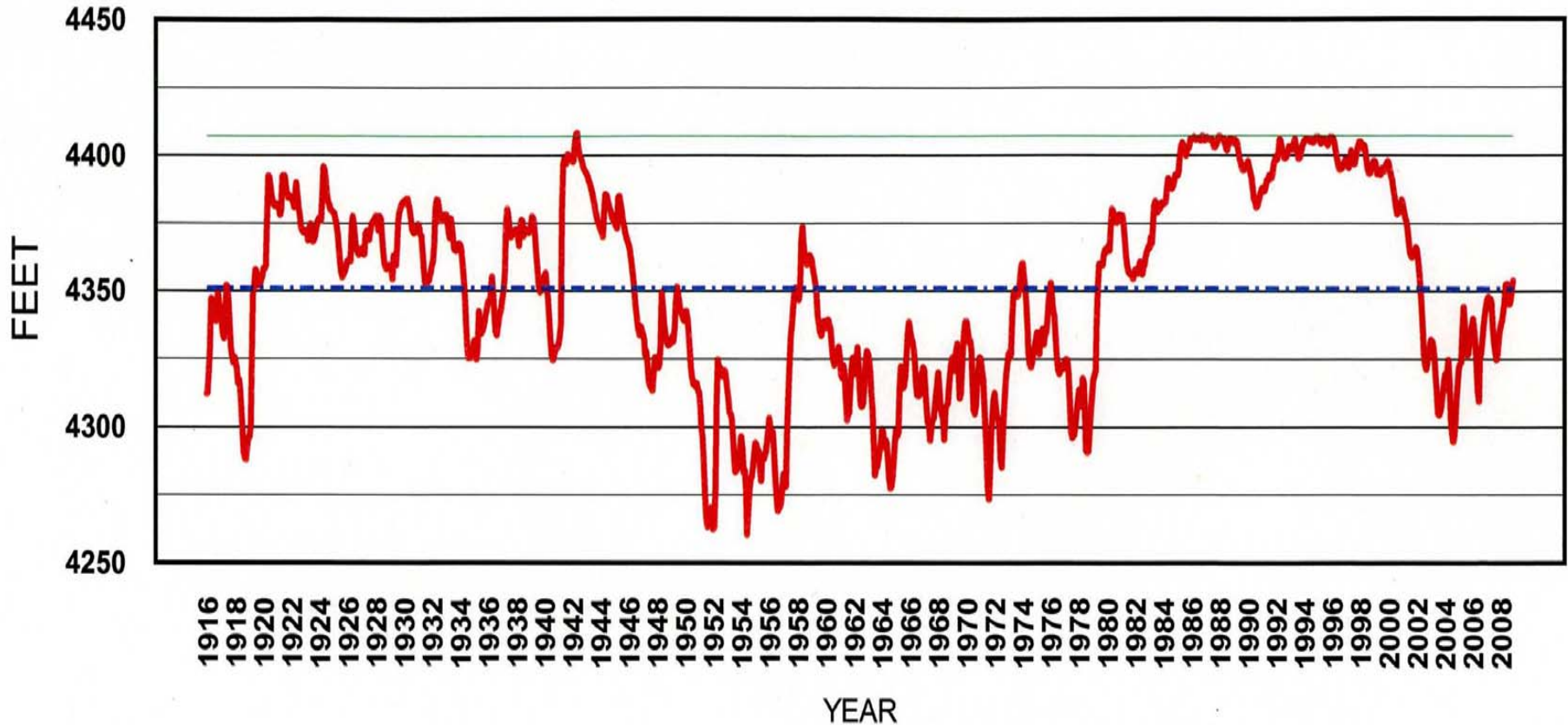
(letter issued May 19, 2008)

Mexico	52,680 AF
Elephant Butte Irrigation District	253,045 AF
El Paso County Water Improvement District # 1	<u>380,012 AF</u>
[73.59% of a full supply]	685,737 AF *

* Project water supply available for diversion at the authorized canal headings.

ELEPHANT BUTTE RESERVOIR

HISTORICAL END-OF-MONTH ELEVATION**



— Elevation * — Spillway Elevation - - - Historical avg end-of-month elevation

**Data thru Apr. 2008 is actual data; other 2008 data is a projection based on Reclamation's most probable plan.

* BOR project datum. To obtain mean sea level datum, add 43.3 feet

RECLAMATION

Managing Water in the West

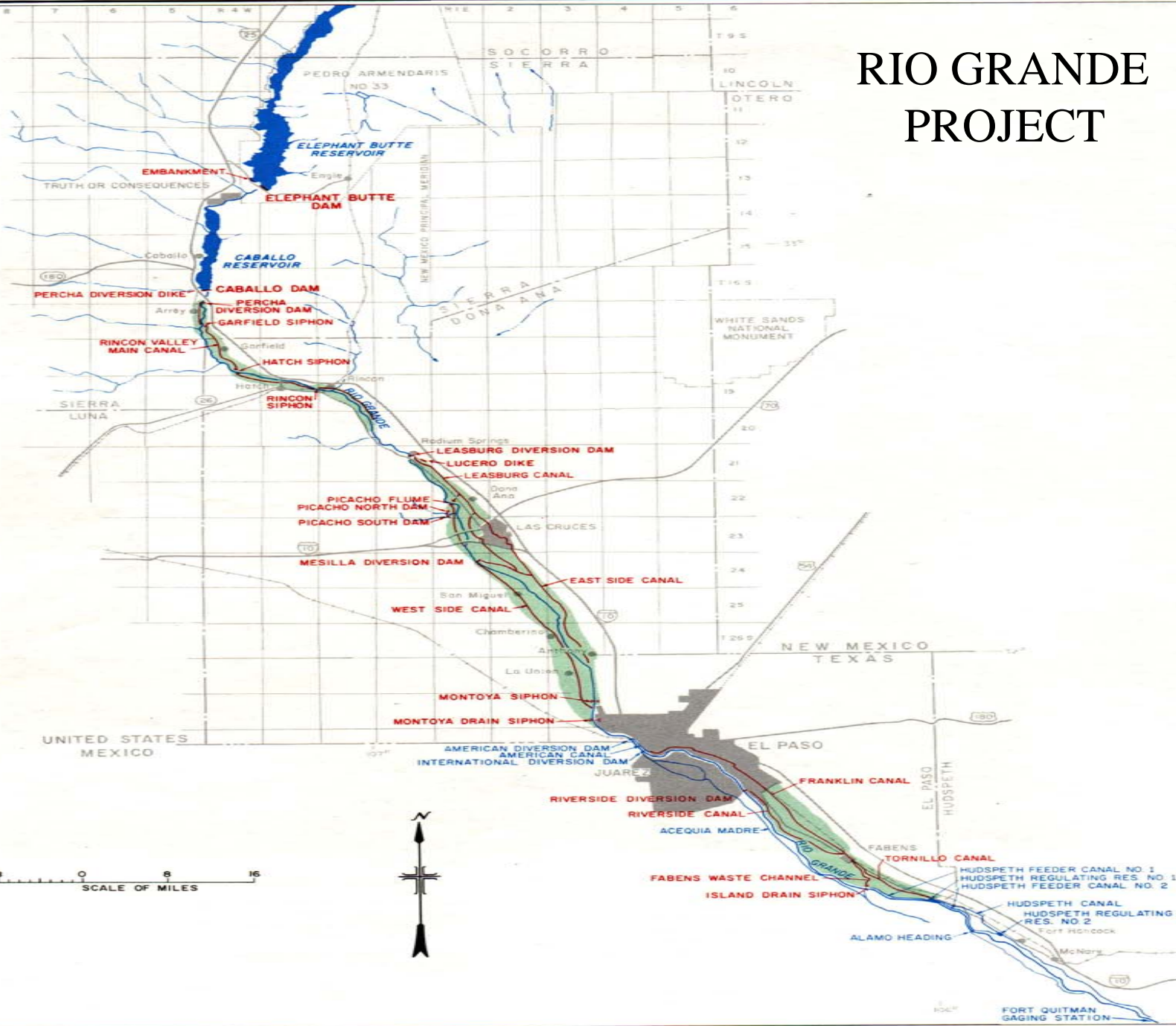
RIO GRANDE PROJECT

SUPPORTING INFORMATION



U. S Dept. of the Interior
Bureau of Reclamation

RIO GRANDE PROJECT



**ELEPHANT BUTTE RESERVOIR
2008 PROJECTED LAKE ELEVATIONS
SUMMARY TABLE**

WTTrees
5/21/2008

[SUBJECT TO REVISION]

May 26 = Memorial Day
July 04 = Independence Day
September 01 = Labor Day

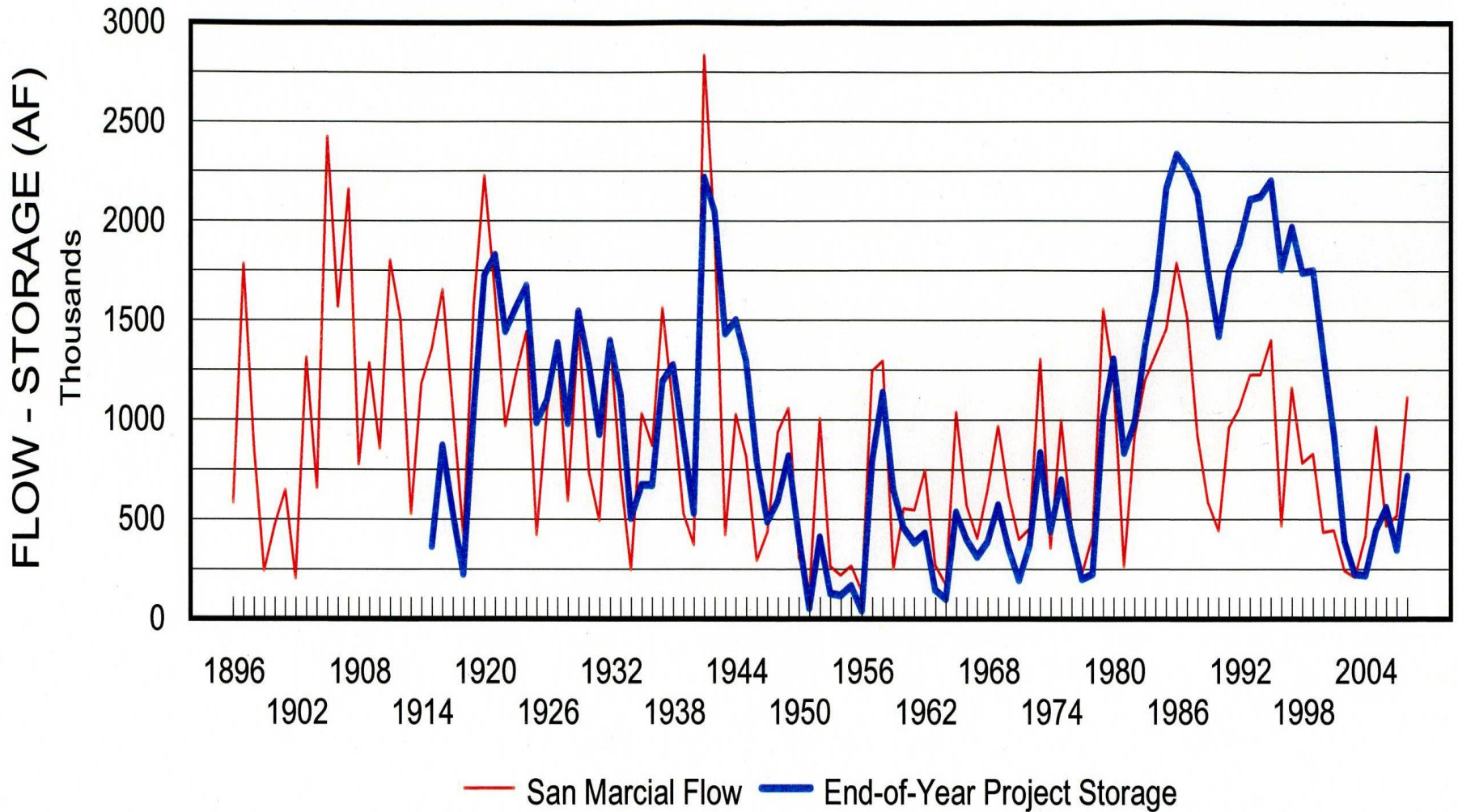
	Elevation (feet) *	Storage (acre-feet)	Lake Surface Area (acres)	Difference In Elevation From 2007	
END OF SEASON ELEVATION: October 24, 2007	4324.40	323,488	10,270	-6.24	(Diff. from 2006)
TODAY - MAY 21, 2008:	4346.08	587,125	14,103	0.66	
2008 RIO GRANDE PROJECT RESERVOIRS PLAN SAN MARCIAL MOST PROBABLE - 121%/132% RUNOFF **					
May 26, 2008	4346.31	590,439	14,143	0.11	(-0.27 from 5/28/07)
July 04, 2008	4352.14	676,052	15,422	8.50	
July 26, 2008 (High Pt.)	4352.79	686,136	15,616	15.07	
September 01, 2008	4346.39	591,519	14,157	15.39	(15.55 from 9/3/07)
October 14, 2008 (Low Pt.)	4345.23	575,134	13,955	19.71	(20.83 from 10/24/07)
December 31, 2008	4353.68	700,179	15,881	21.46	
2008 RIO GRANDE PROJECT RESERVOIRS PLAN SAN MARCIAL 70% EXCEEDANCE - 103%/117% RUNOFF **					
May 26, 2008	4347.36	605,280	14,325	1.16	(0.78 from 5/28/07)
July 04, 2008	4351.20	661,672	15,142	7.56	
July 13, 2008 (High Pt.)	4351.34	663,796	15,184	10.50	
September 01, 2008	4343.52	551,523	13,658	12.52	(12.68 from 9/3/07)
October 15, 2008 (Low Pt.)	4342.04	531,503	13,401	16.68	(17.64 from 10/24/07)
December 31, 2008	4351.03	659,203	15,091	18.81	
2008 RIO GRANDE PROJECT RESERVOIRS PLAN SAN MARCIAL 90% EXCEEDANCE - 79%/96% RUNOFF **					
May 26, 2008	4346.31	590,439	14,143	0.11	(-0.27 from 5/28/07)
June 10, 2008 (High Pt.)	4347.53	607,766	14,355	-0.05	
July 04, 2008	4344.51	565,198	13,830	0.87	
September 01, 2008	4334.07	430,524	11,933	3.07	(3.23 from 9/3/07)
October 15, 2008 (Low Pt.)	4333.27	421,072	11,783	7.91	(8.87 from 10/24/07)
December 31, 2008	4343.20	547,215	13,602	10.98	

* Rio Grande Project datum; to obtain USGS mean sea level, add 43.30 feet.

** Based on NRCS/NWS May 1st runoff forecasts, and adjusted for upstream reservoir regulation and middle valley gains.

SAN MARCIAL FLOW - RIO GRANDE PROJECT STORAGE

1896 Through 2008*



* End-of-year project storage and San Marcial flow for 2008 is a projection based on Rio Grande Project most probable plan.

**STATUS OF RIO GRANDE COMPACT CREDIT WATERS
IN ELEPHANT BUTTE RESERVOIR SINCE LAST SPILL
FROM RIO GRANDE PROJECT STORAGE ***

<u>YEAR</u>	<u>COLORADO (acre-feet)</u>	<u>NEW MEXICO (acre-feet)</u>	
1995	0	0	SPILL YEAR
1996	2,400	68,800	
1997	2,900	105,500	
1998	11,500	153,100	
1999	17,700	170,700	
2000	27,000	269,100	
2001	10,100	155,700	
2002	42,800	265,000	
2003	1,200	54,000	
2004	4,400	35,600	
2005	4,600	37,100	
2006	15,500	180,100	
2007	7,200	184,500	

* derived from Rio Grande Compact Commission yearly reports.

ELEPHANT BUTTE RESERVOIR

Top of Conservation Storage Pool:
(Rio Grande Project Authorization)

TOTAL STORAGE
2,023,358 AF
(ELEV 4407.00 FT)

FLOOD RESERVATION
POOL

Top of Conservation Storage Pool:
Winter (October 1 - March 31)

1,998,358 AF
(ELEV 4406.30 FT)

25,000 AF (WINTER)

Top of Conservation Storage Pool:
Summer (April 1 - September 30)

1,973,358 AF
(ELEV 4405.60 FT)

50,000 AF (SUMMER)

Top of City of Albuquerque SJ-C Pool:
1983 Contract for irrig. and domestic

50,000 AF
(ELEV 4295.11 FT)

Top of Federal Recreation Pool:
1974 Public Law 93-493, 88 Stat. 1486

50,000 AF
(ELEV 4282.68 FT)

CABALLO RESERVOIR

Top of Flood Control Pool:

326,672 AF
(ELEV 4182.00 FT)

EXCLUSIVE
FLOOD CONTROL

100,000 AF

Top of Conservation Storage Pool:

226,672 AF
(ELEV 4172.44 FT)

Top of Minimum Fishery Pool:
Biological Opinion (1991)

25,000 AF
(ELEV 4138.24 FT)

Court Order No. CIV-90-95 HB/WWD:

October 1 - January 31 (each year), storage level
will not exceed 50,000 AF (elev 4146.11 ft)

Operation Plan of Caballo Reservoir during 2008:

February 1 - September 30 (2008), storage level will be maintained
such that the storage level shall not exceed 57,000 AF (elev 4147.79 ft)
nor drop below 10,000 AF (elev 4130.81 ft) from Feb. 1 to Sep. 30

