

RECLAMATION

Managing Water in the West

RIO GRANDE PROJECT

El Paso Field Division
10737 Gateway Blvd. West, Suite 350
El Paso, TX 79935



U. S Dept. of the Interior
Bureau of Reclamation

RECLAMATION

Managing Water in the West

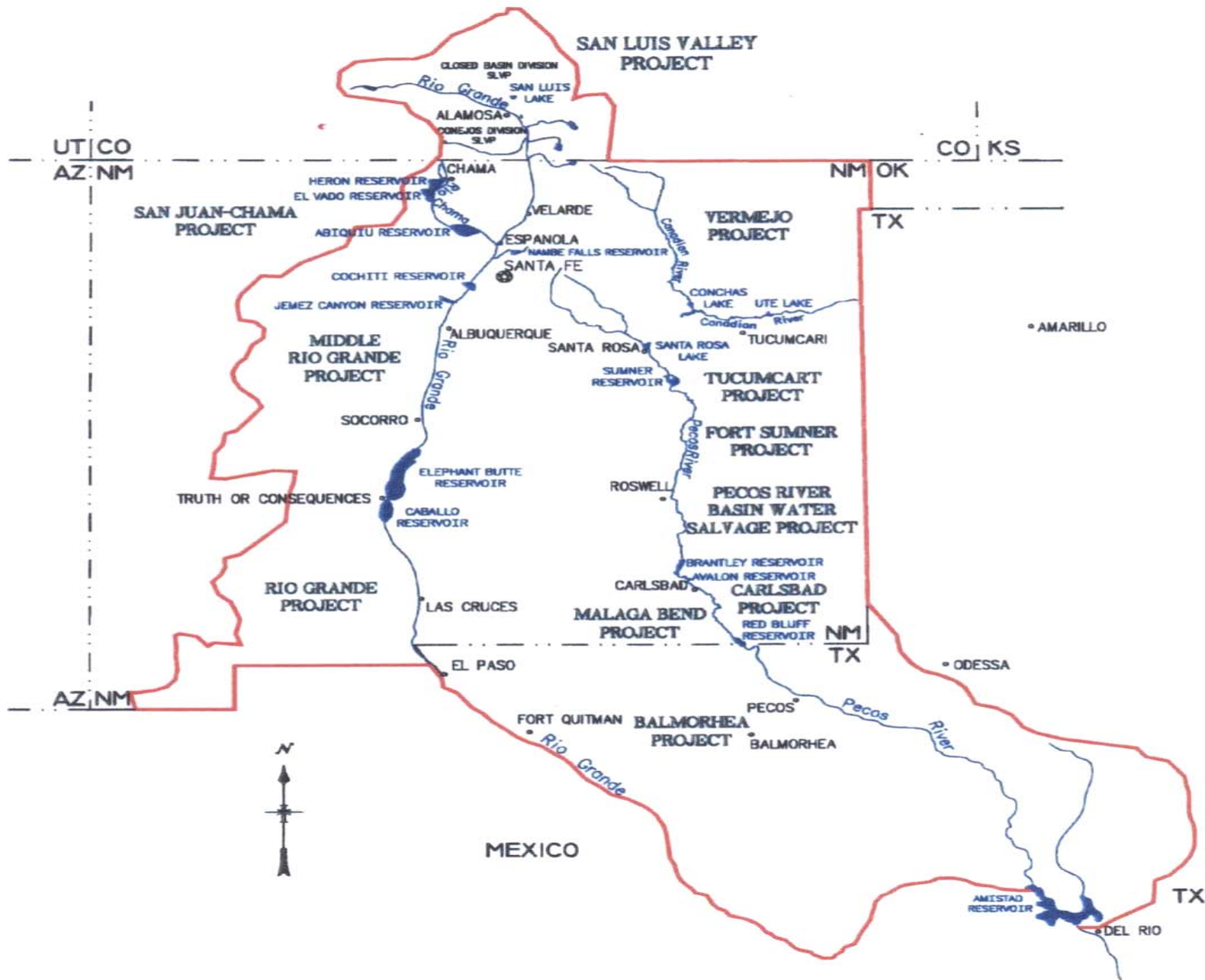
RIO GRANDE PROJECT

CURRENT HYDROLOGIC CONDITIONS OF UPPER RIO GRANDE BASIN

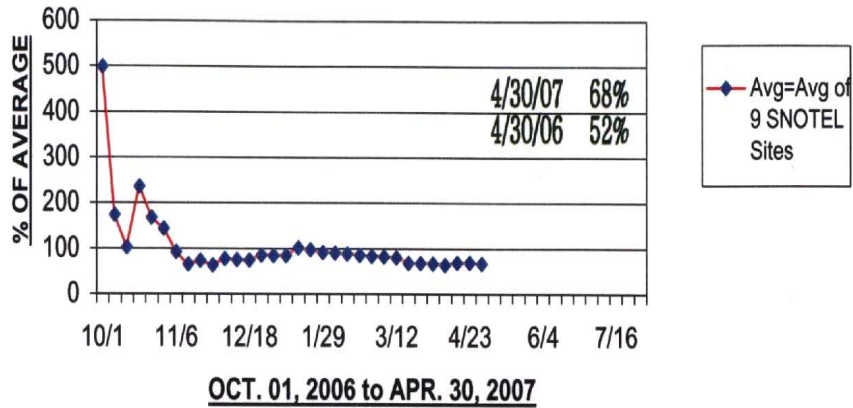


U. S Dept. of the Interior
Bureau of Reclamation

ALBUQUERQUE AREA OFFICE BUREAU OF RECLAMATION



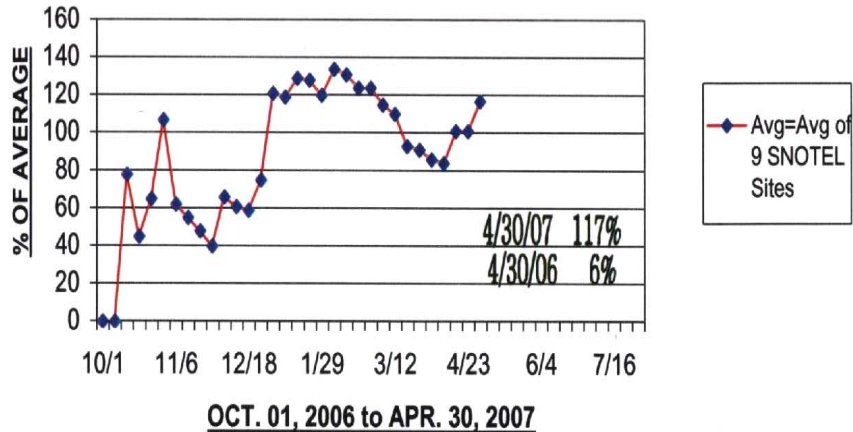
% OF AVG. SNOW WATER EQUIVALENT vs TIME
Upper Rio Grande Basin (Basin Avg.)



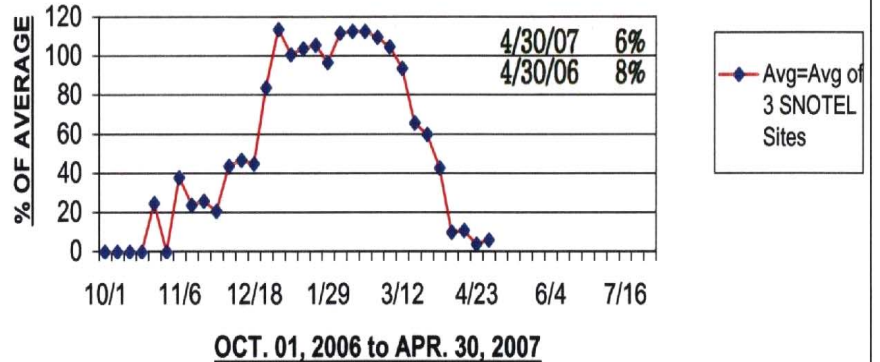
% OF AVG. SNOW WATER EQUIVALENT vs TIME
Rio Chama Basin (Basin Avg.)



% OF AVG. SNOW WATER EQUIVALENT vs TIME
Sangre de Cristo Mtn Basins (Basin Avg.)

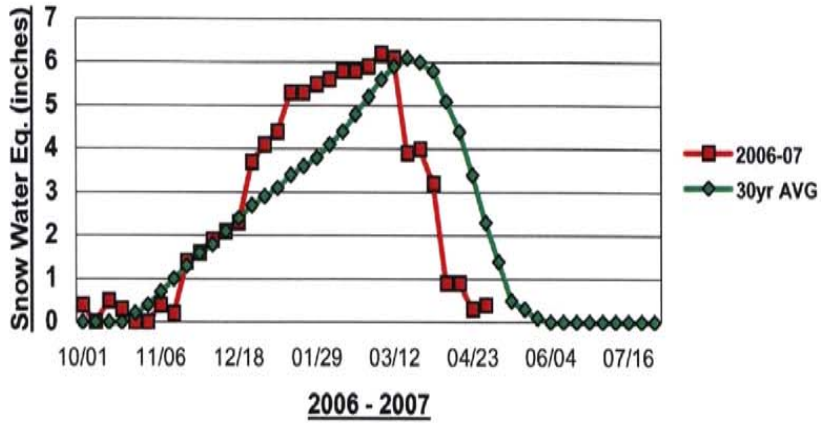


% OF AVG. SNOW WATER EQUIVALENT vs TIME
Jemez River Basin (Basin Avg.)



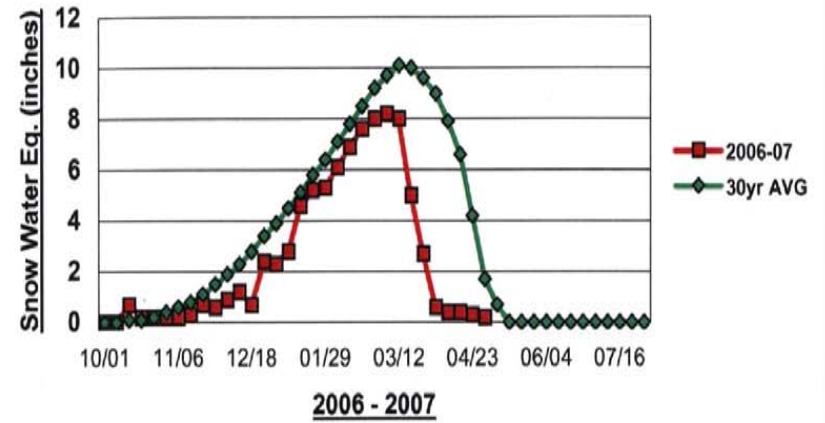
UPPER RIO GRANDE SNOTEL

Elevation: 9,400 FT



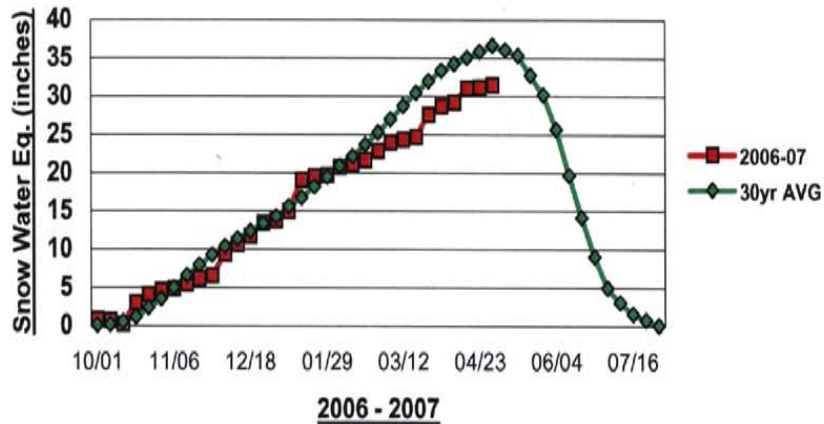
CHAMITA SNOTEL

Elevation: 8,400 FT



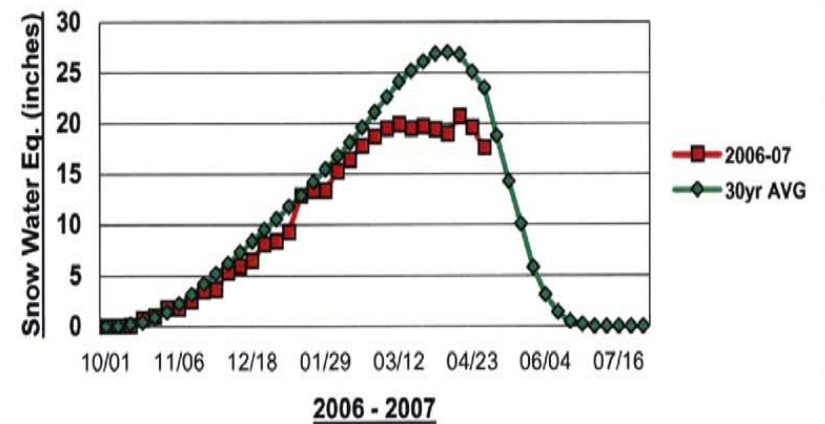
WOLF CREEK SUMMIT SNOTEL

Elevation: 11,000 FT



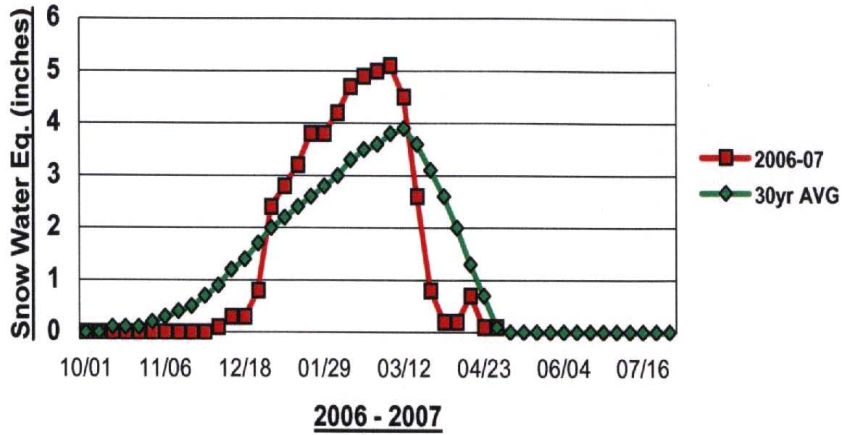
CUMBRES TRESTLE SNOTEL

Elevation: 10,040 FT



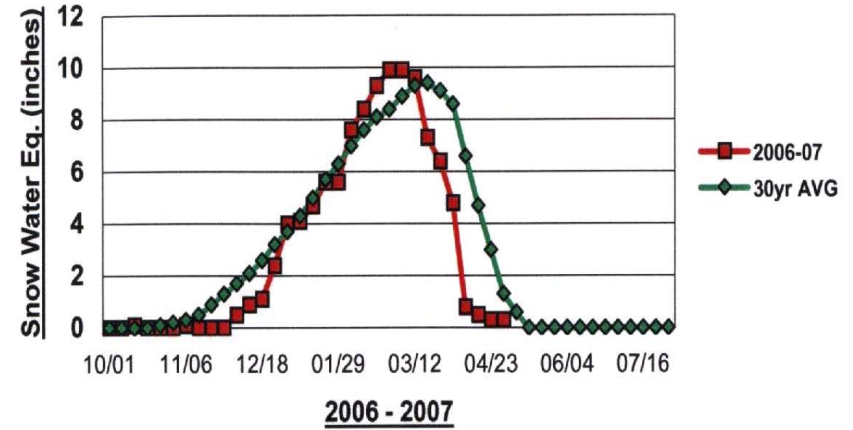
ELK CABIN SNOTEL

Elevation: 8,210 FT



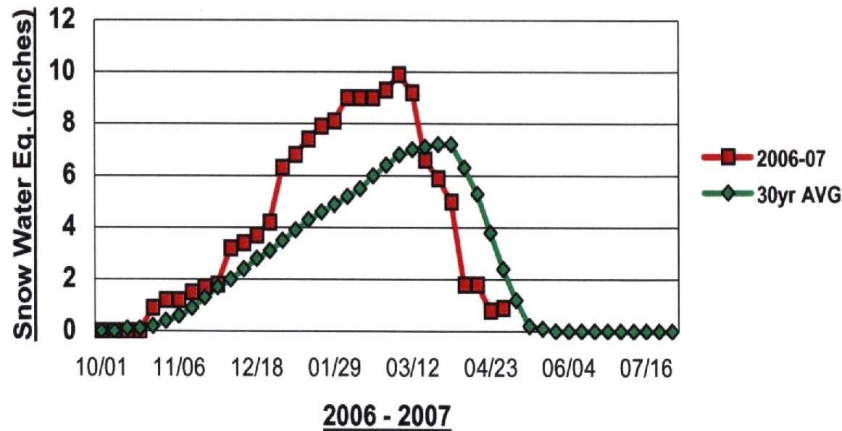
SENORITA DIVIDE #2 SNOTEL

Elevation: 8,600 FT



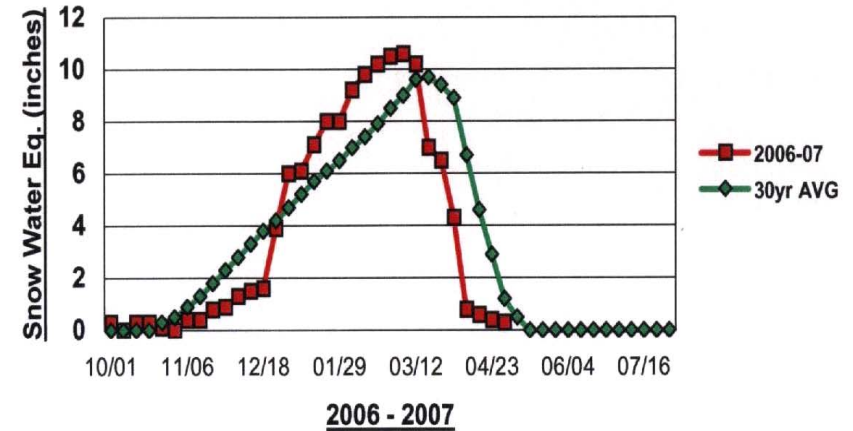
RED RIVER PASS #2 SNOTEL

Elevation: 9,850 FT

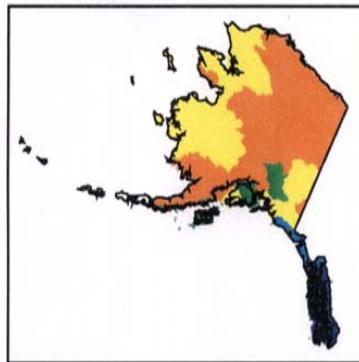


QUEMAZON SNOTEL

Elevation: 9,500 FT



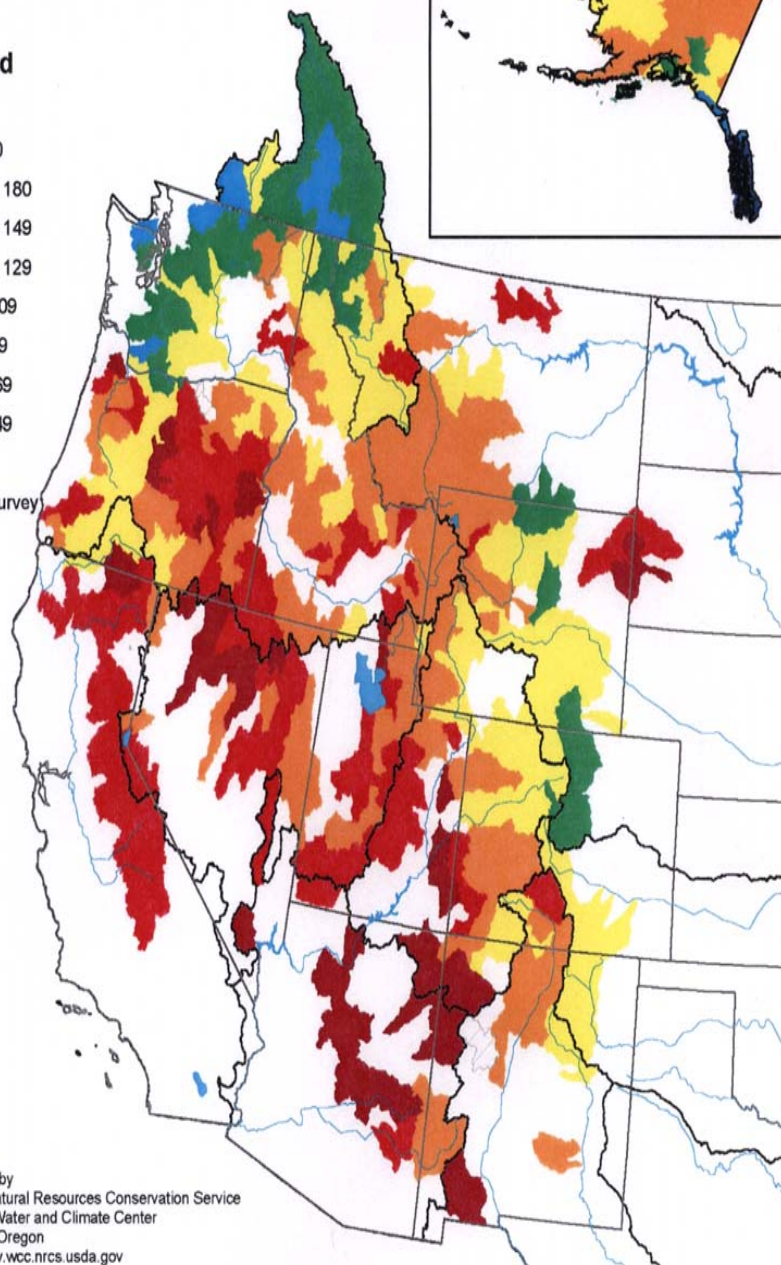
Mountain Snowpack as of April 1, 2007



Legend

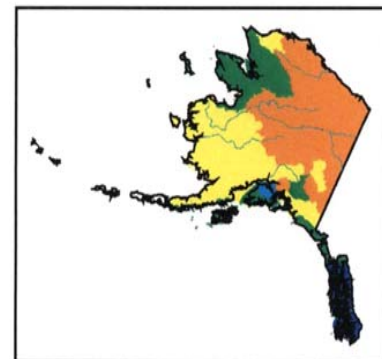
percent

- > 180
- 150 - 180
- 130 - 149
- 110 - 129
- 90 - 109
- 70 - 89
- 50 - 69
- 25 - 49
- < 25
- No Survey



Prepared by
 USDA, Natural Resources Conservation Service
 National Water and Climate Center
 Portland, Oregon
<http://www.wcc.nrcs.usda.gov>

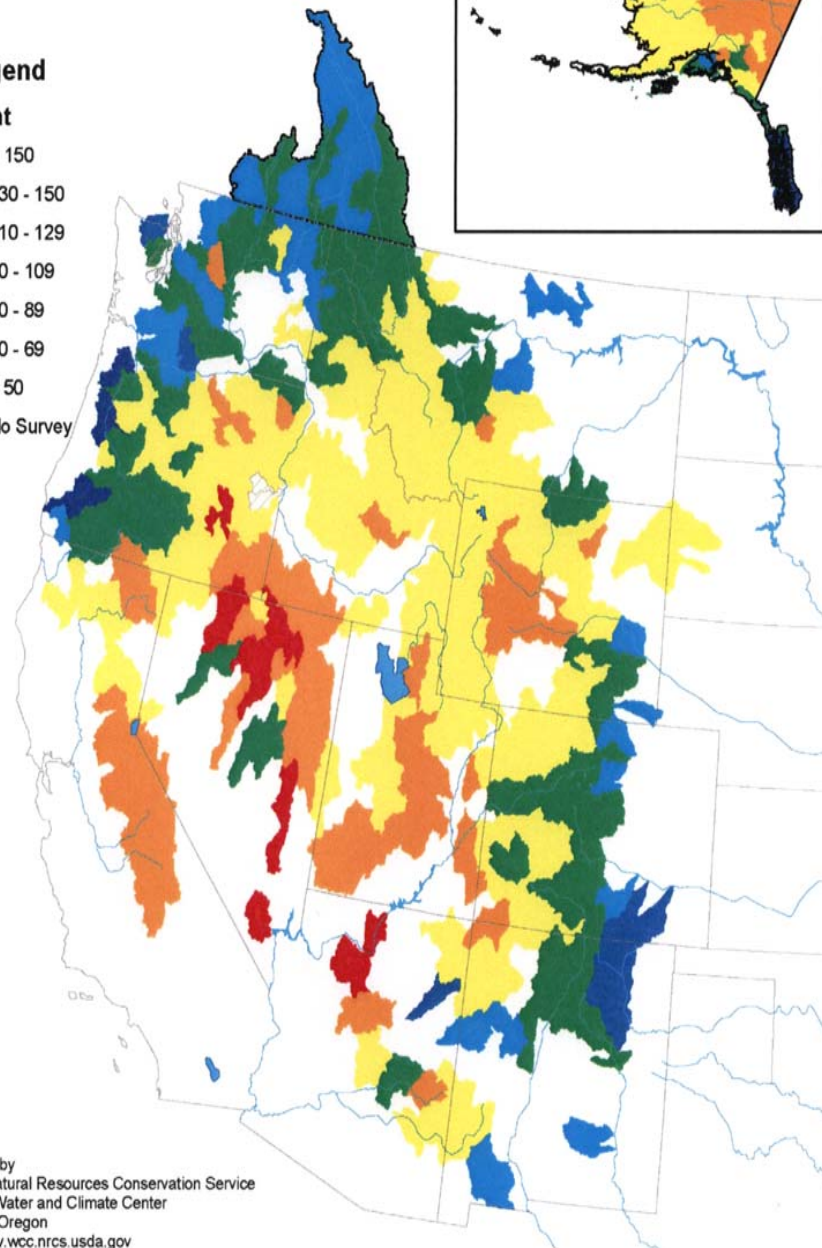
Mountain Snowpack as of March 1, 2007



Legend

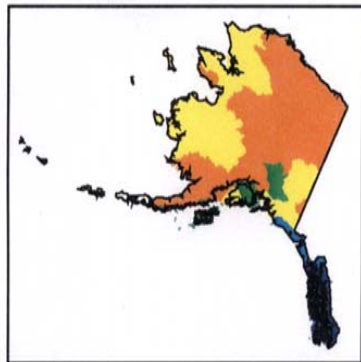
percent

- > 150
- 130 - 150
- 110 - 129
- 90 - 109
- 70 - 89
- 50 - 69
- < 50
- No Survey



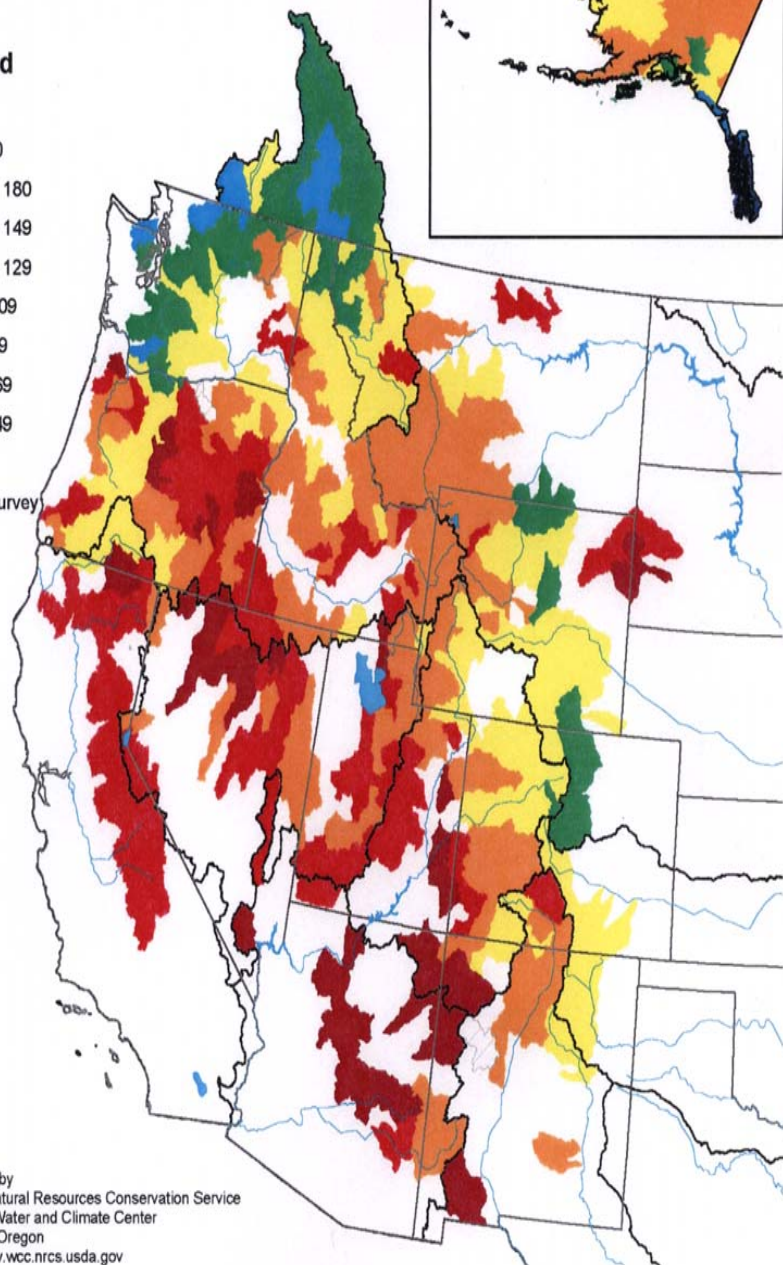
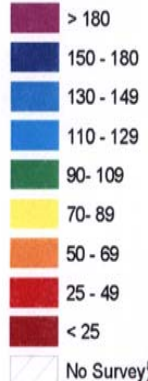
Prepared by
 USDA, Natural Resources Conservation Service
 National Water and Climate Center
 Portland, Oregon
<http://www.wcc.nrcs.usda.gov>

Mountain Snowpack as of April 1, 2007

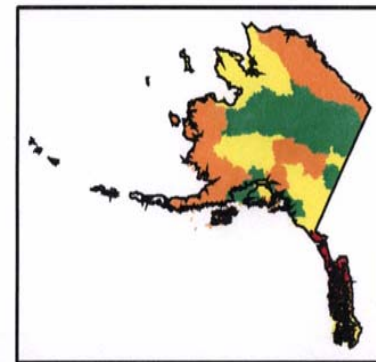


Legend

percent

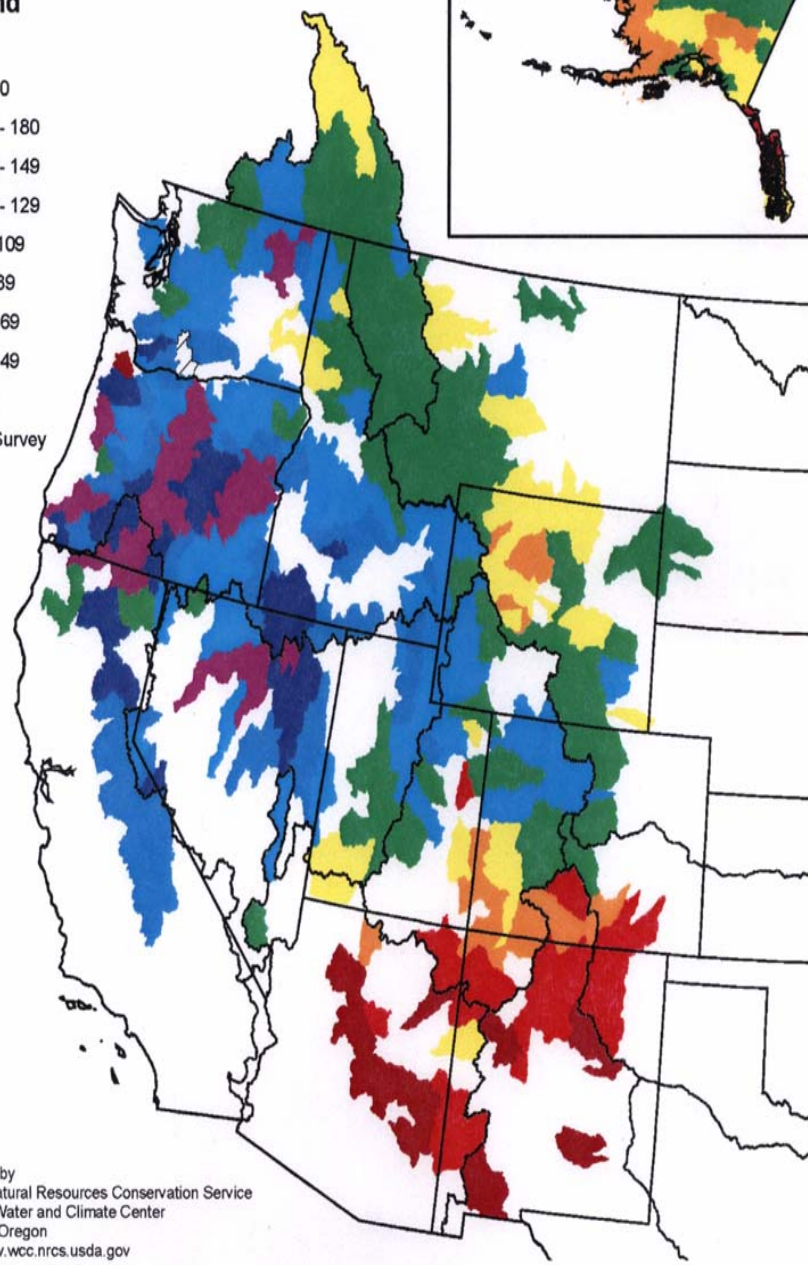


Mountain Snowpack as of April 1, 2006

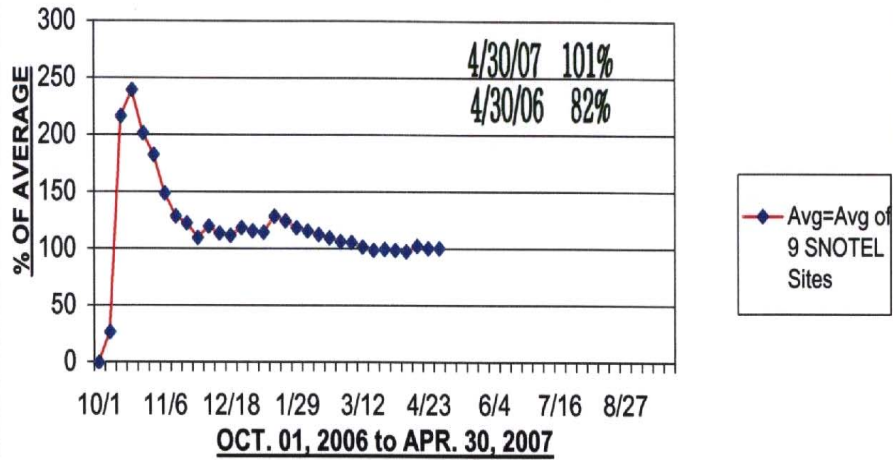


Legend

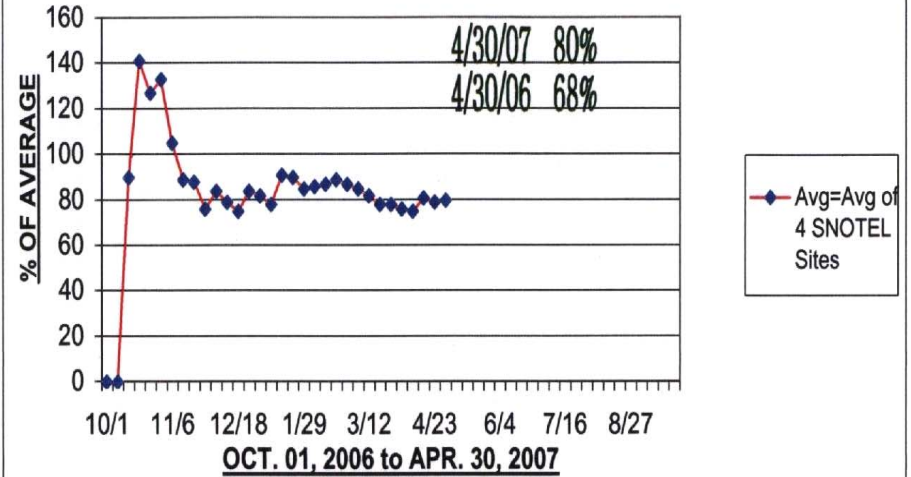
percent



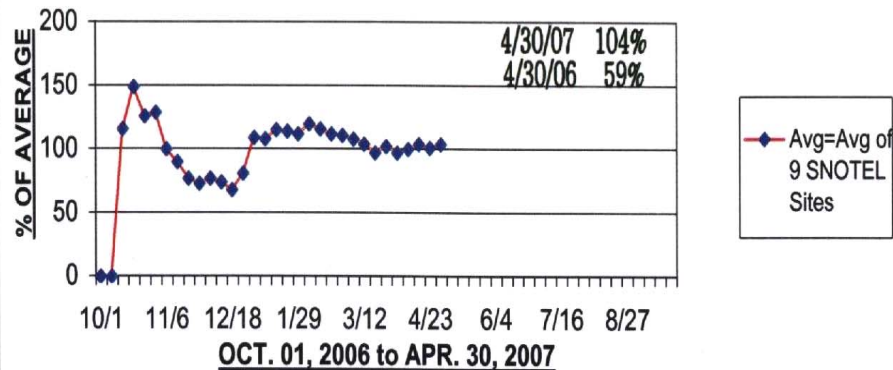
% OF TOTAL PRECIPITATION vs TIME
Upper Rio Grande Basin (Basin Avg.)



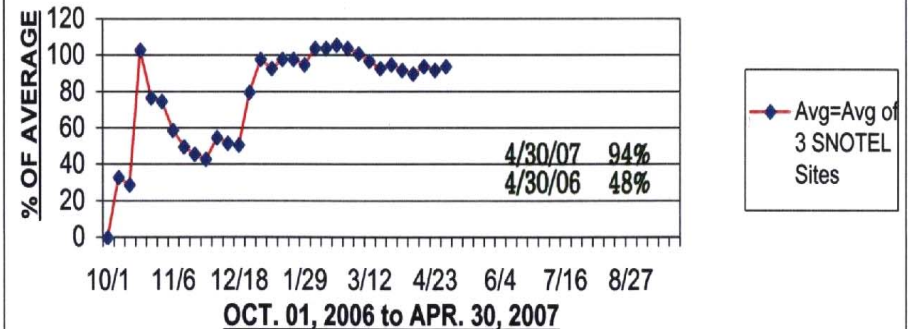
% OF AVG. TOTAL PRECIPITATION vs TIME
Rio Chama Basin (Basin Avg.)



% OF AVG. TOTAL PRECIPITATION vs TIME
Sangre de Cristo Mtn Basins (Basin Avg.)



% OF AVG. TOTAL PRECIPITATION vs TIME
Jemez River Basin (Basin Avg.)



SPRING RUNOFF FORECASTS

2007

R I O G R A N D E B A S I N

(ACRE-FEET)

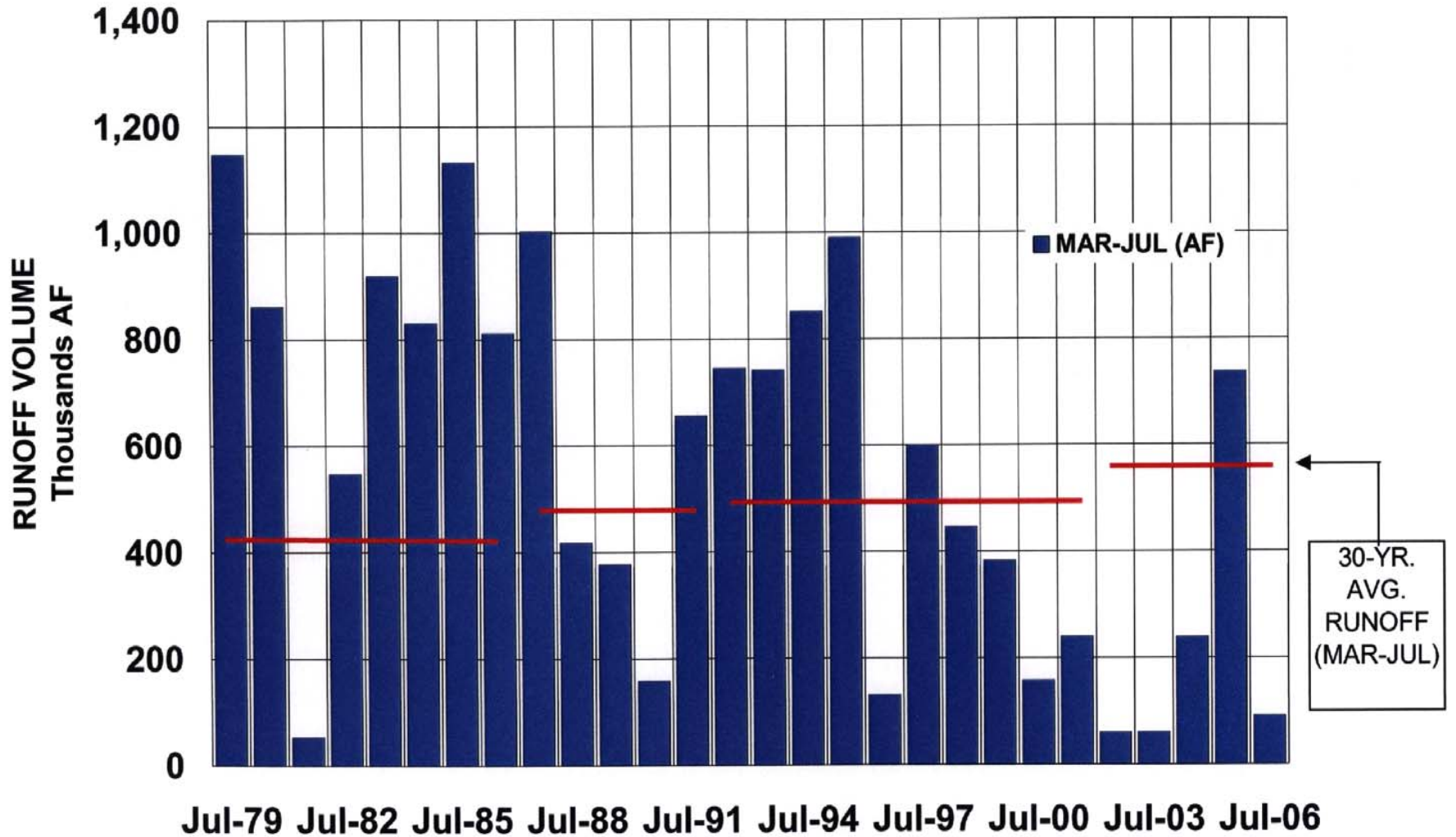
FORECAST POINT	Rio Grande nr Del Norte	Rio Chama at El Vado Reservoir	Rio Grande at Otowi Bridge	Jemez River at Jemez Canyon Reservoir	Rio Grande at San Marcial
FORECAST PERIOD	APR-SEP	MAR-JUL	MAR-JUL	MAR-JUL	MAR-JUL
30-YEAR AVERAGE RUNOFF *	531,000	237,000	757,000	45,000	573,000
JANUARY 1 FORECAST	555,000 105%	215,000 91%	720,000 95%	46,000 102%	520,000 91%
FEBRUARY 1 FORECAST	555,000 105%	225,000 95%	770,000 102%	46,000 102%	570,000 99%
MARCH 1 FORECAST	490,000 92%	190,000 80%	640,000 85%	43,000 96%	440,000 77%
APRIL 1 FORECAST	415,000 78%	155,000 65%	470,000 62%	29,000 64%	265,000 46%
MAY 1 FORECAST **					
APR 1, 2006	355,000 67%	91,000 38%	265,000 35%	2,800 6%	100,000 18%

* based on 1971-2000 runoff data.

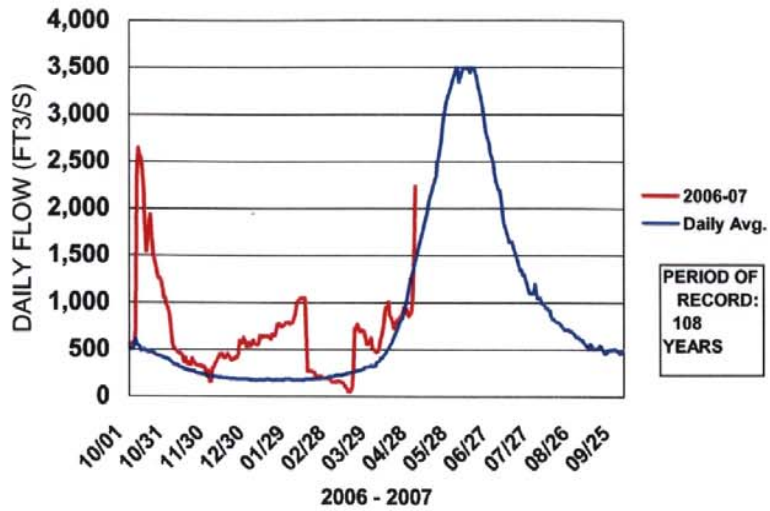
** last official forecast for 2007 spring runoff.

HISTORICAL RUNOFF - SAN MARCIAL

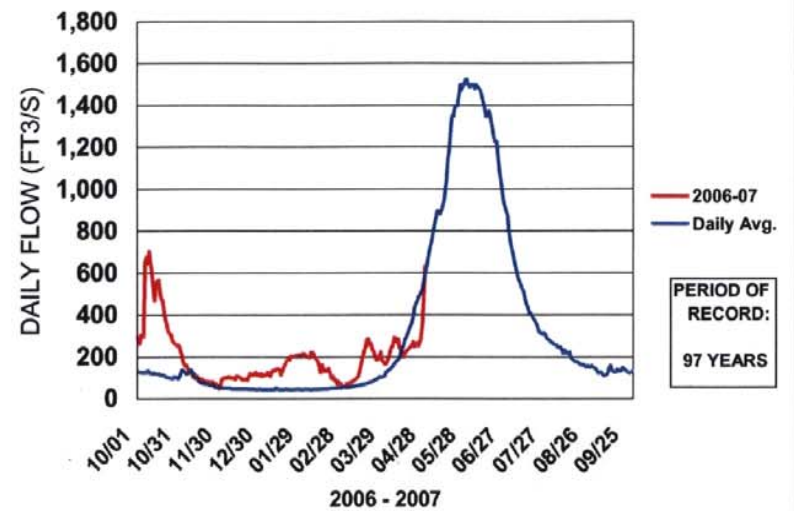
1979 - 2006



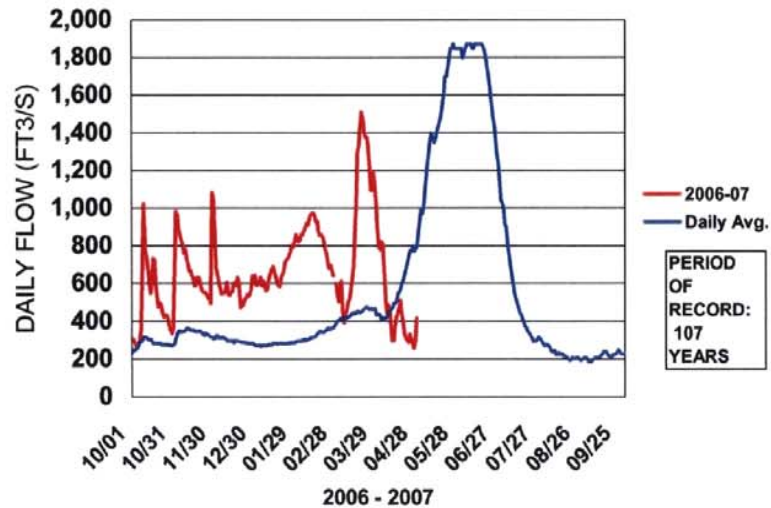
RIO GRANDE NEAR DEL NORTE, CO



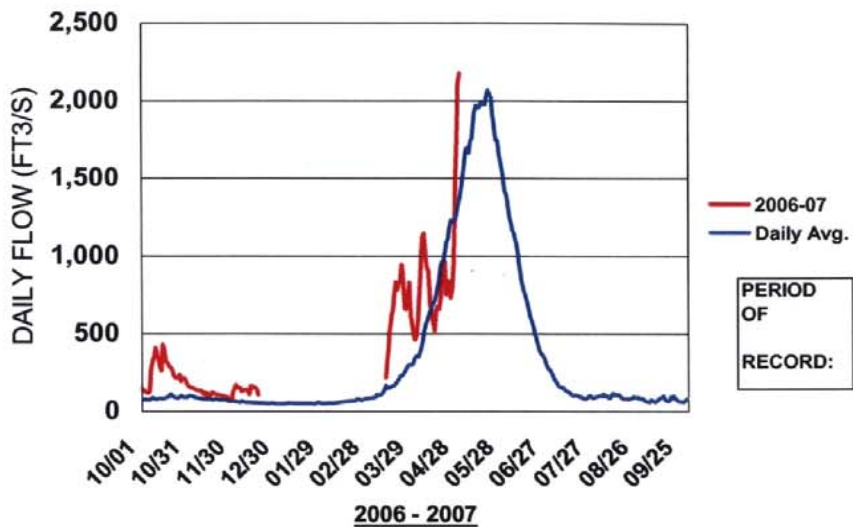
CONEJOS RIVER NEAR MOGOTE, CO



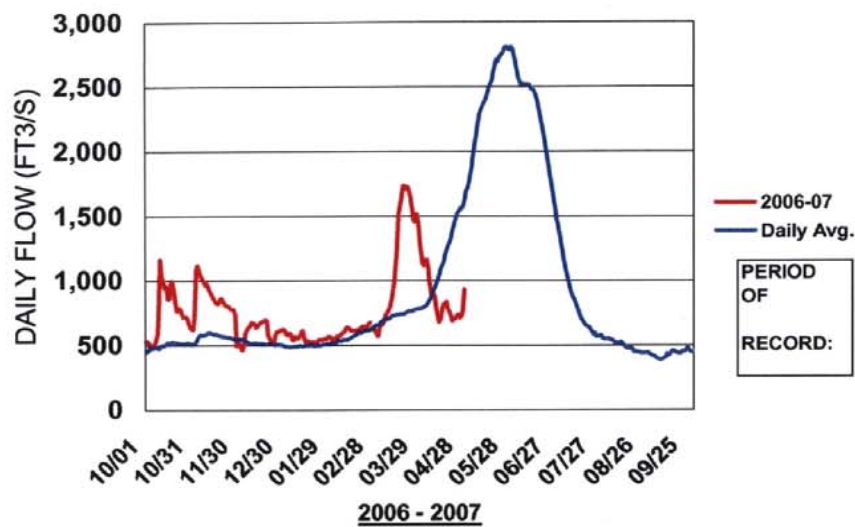
RIO GRANDE NEAR LOBATOS, CO



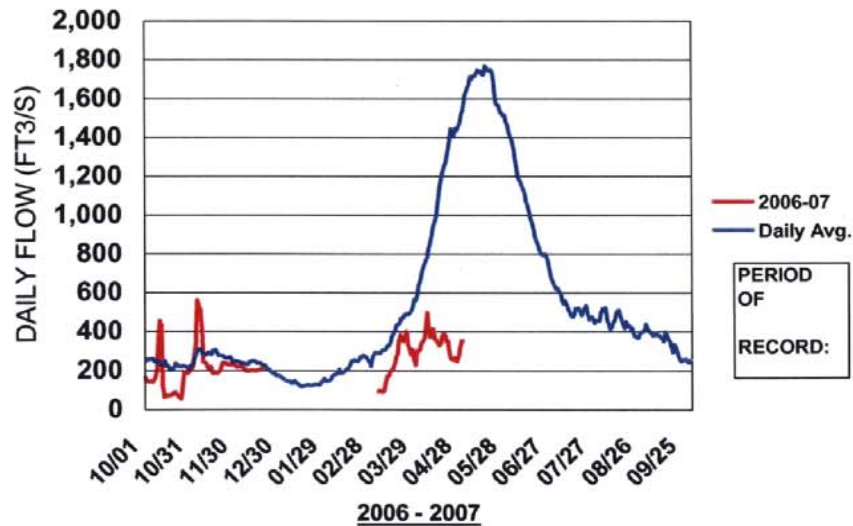
RIO CHAMA NEAR LA PUENTE, NM



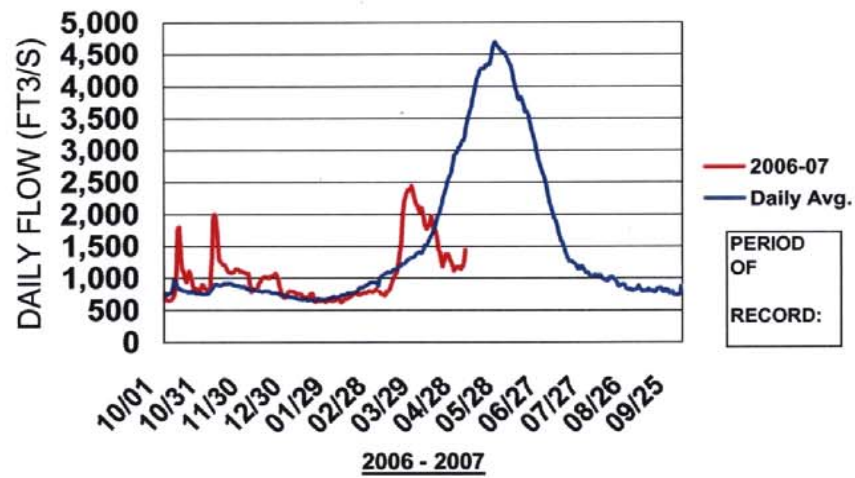
RIO GRANDE AT EMBUDO, NM



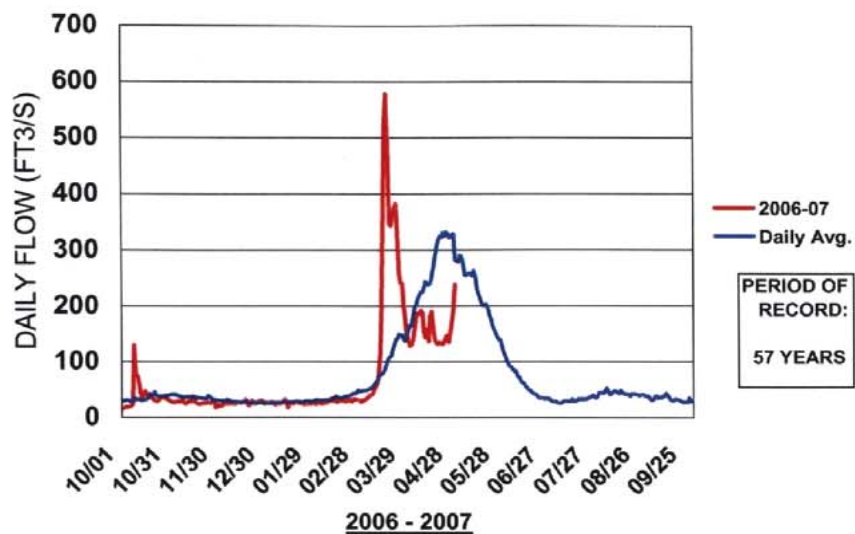
RIO CHAMA NEAR CHAMITA, NM



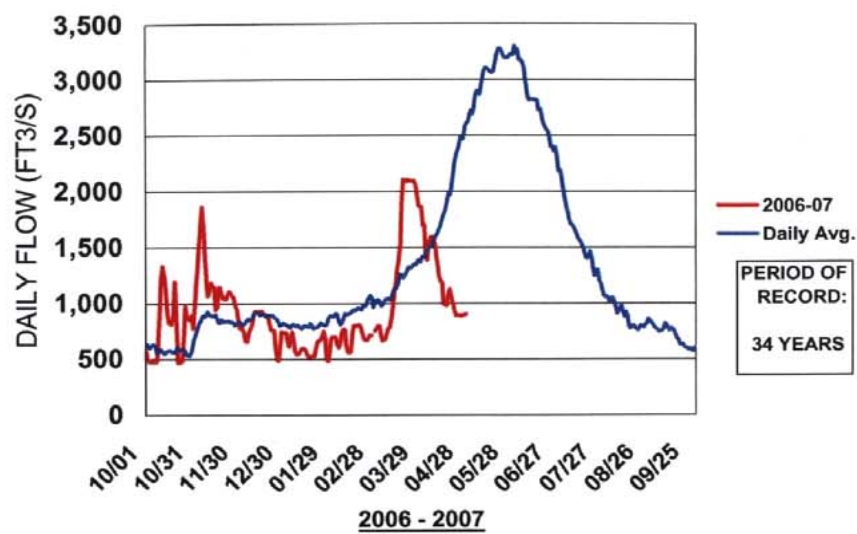
RIO GRANDE AT OTOWI BRIDGE, NM



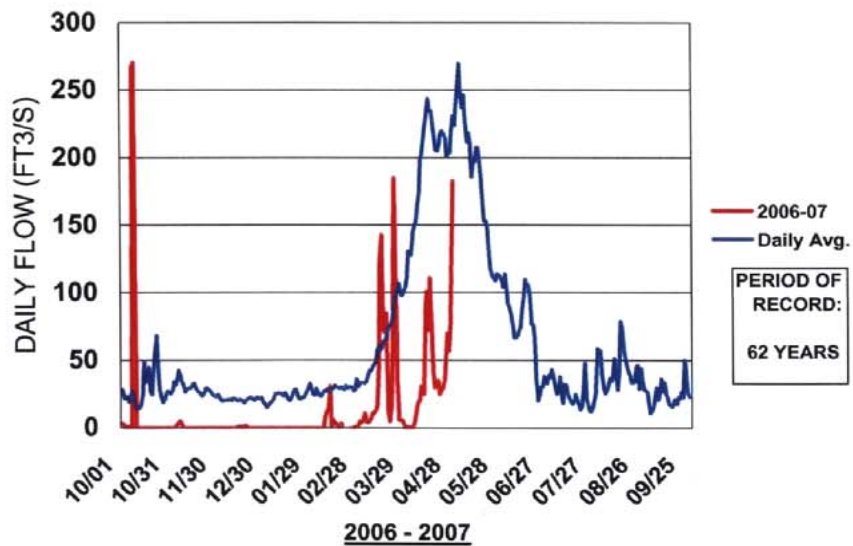
JEMEZ RIVER NEAR JEMEZ, NM



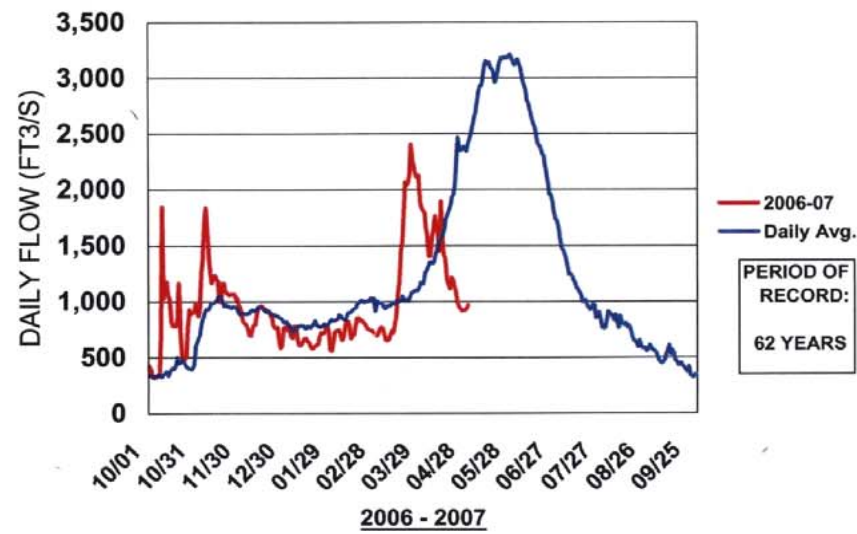
RIO GRANDE BLW COCHITI DAM, NM



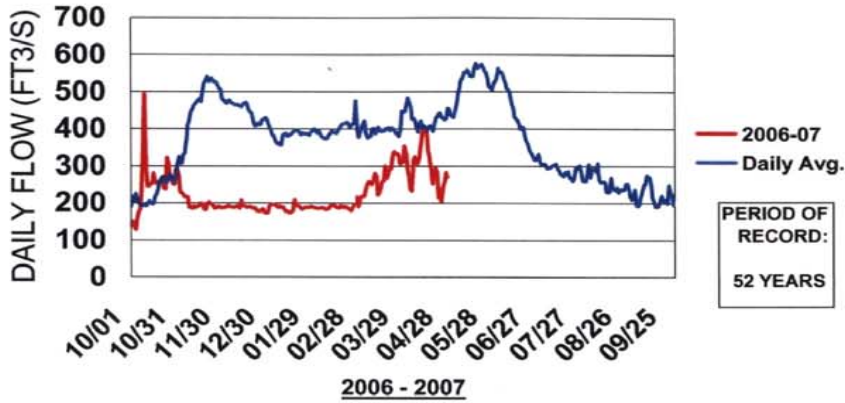
JEMEZ RIVER BELOW JEMEZ CANYON DAM, NM



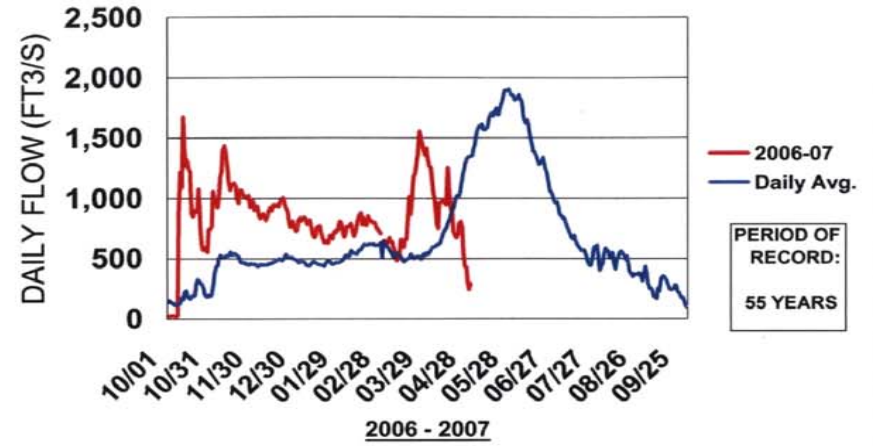
RIO GRANDE AT ALBUQUERQUE, NM



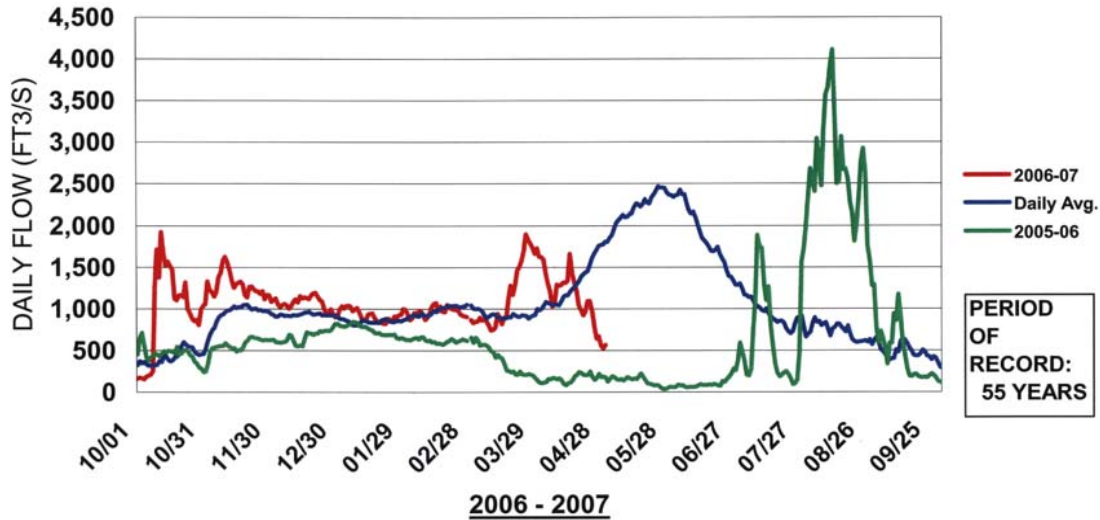
RIO GRANDE AT SAN MARCIAL, NM LOW FLOW CONVEYANCE CHANNEL



RIO GRANDE AT SAN MARCIAL, NM FLOODWAY



RIO GRANDE AT SAN MARCIAL, NM COMBINED GAUGING STATIONS



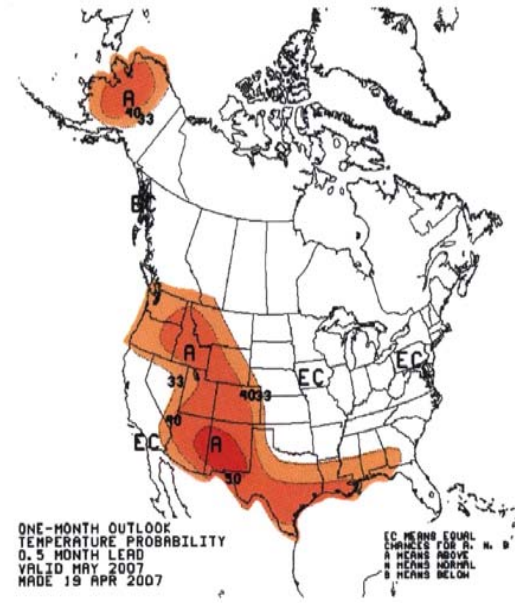
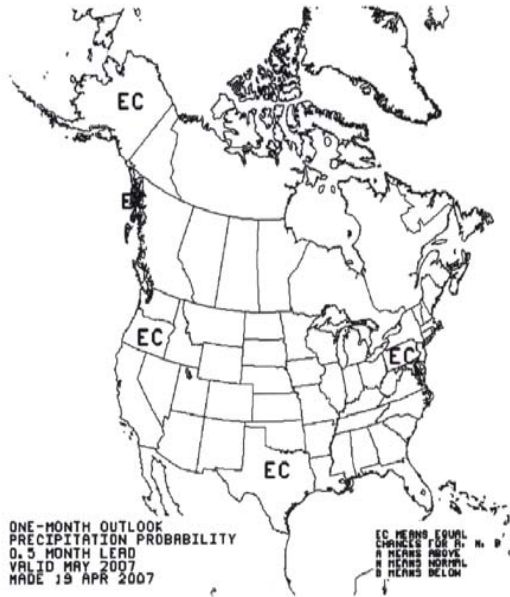
2007

Precipitation

Temperature

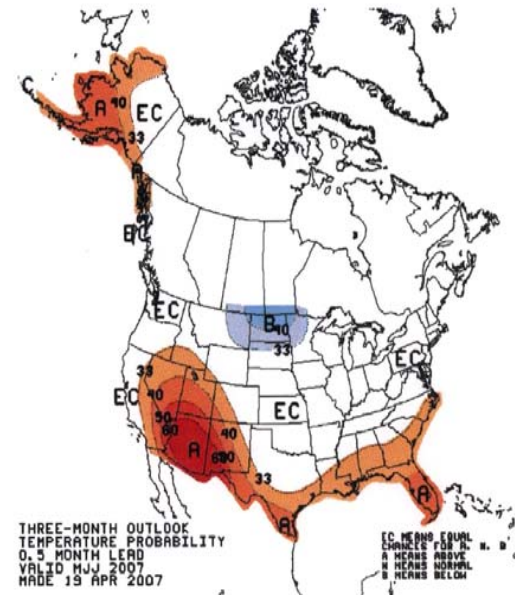
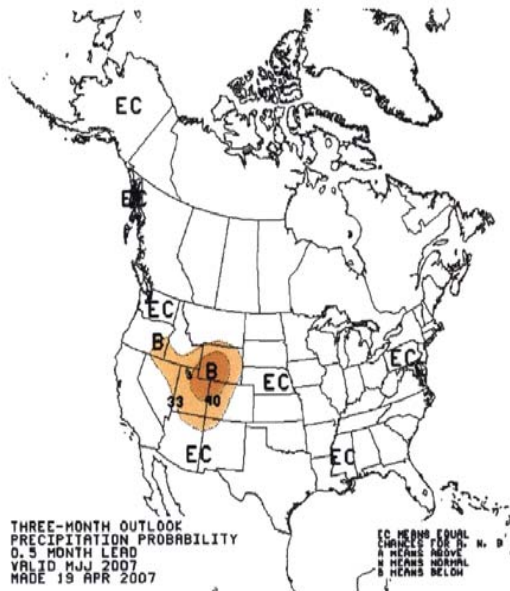
May07

May07

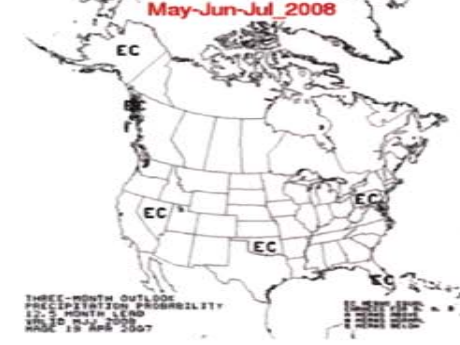
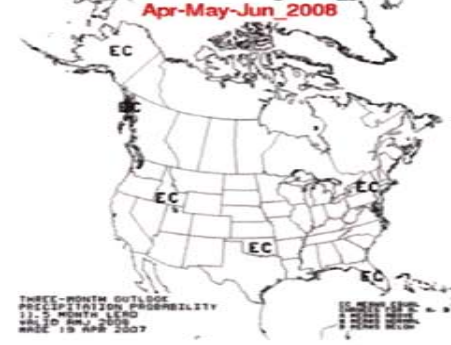
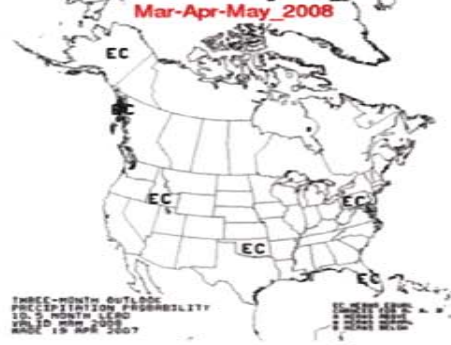
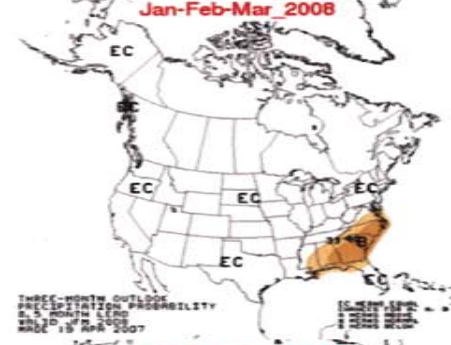
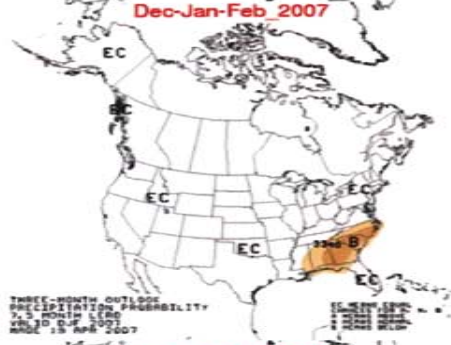
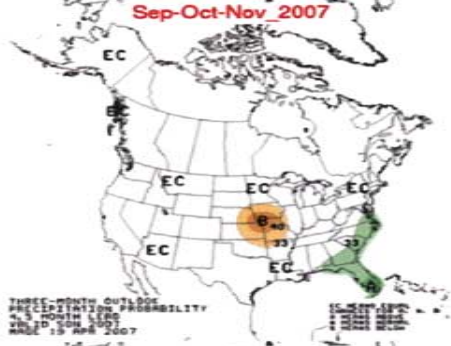
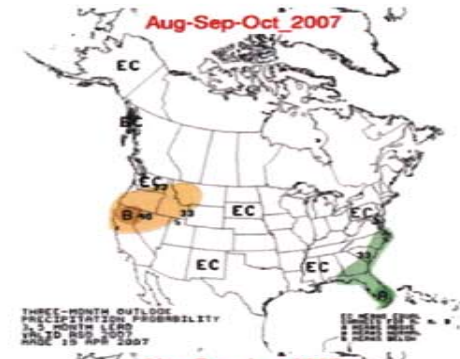
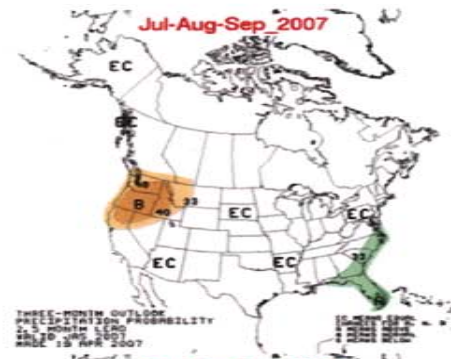
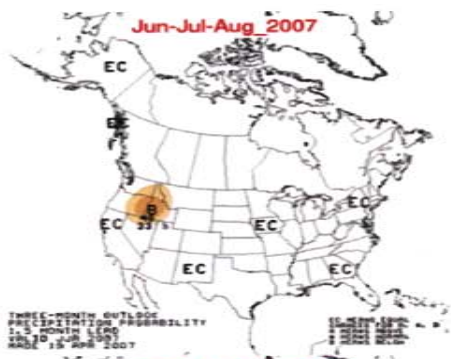


May07-
Jul07

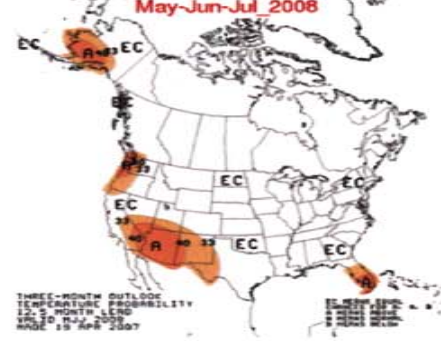
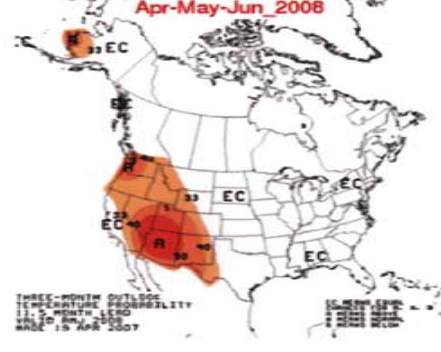
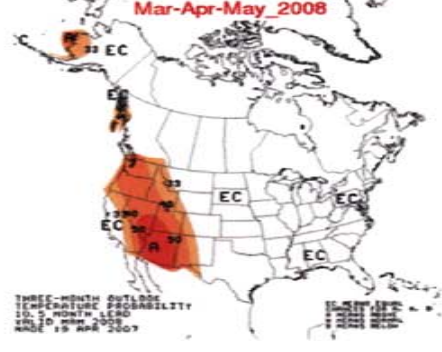
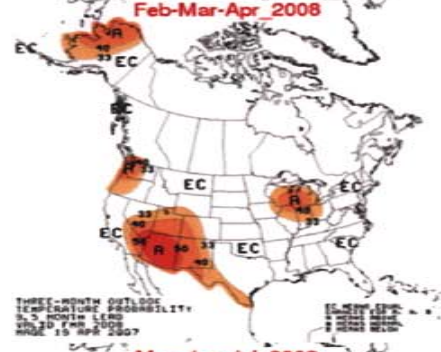
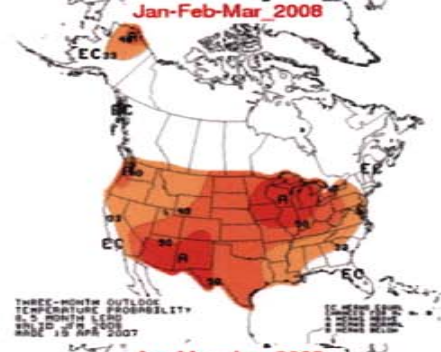
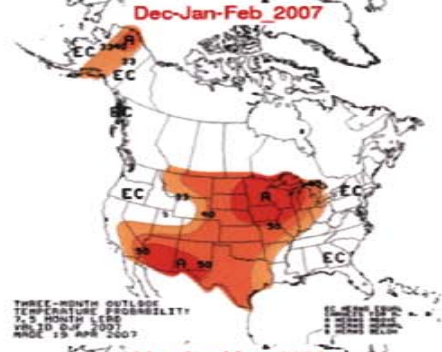
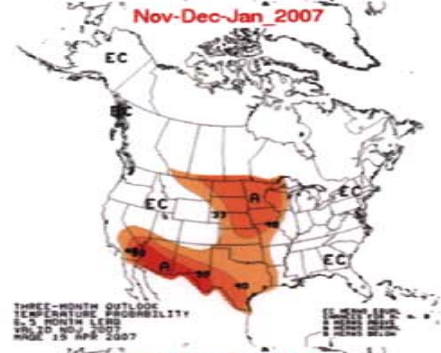
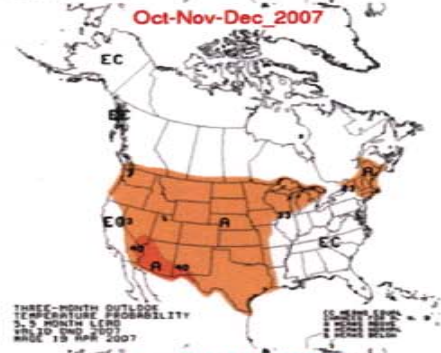
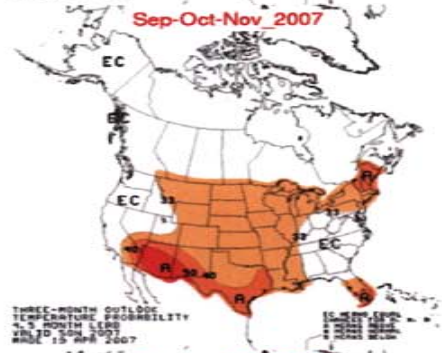
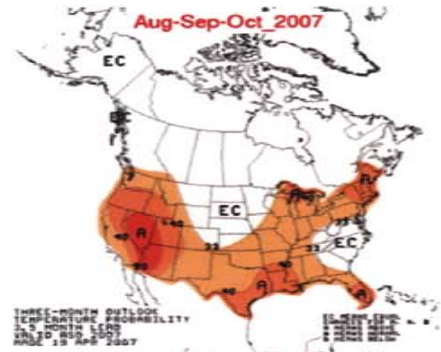
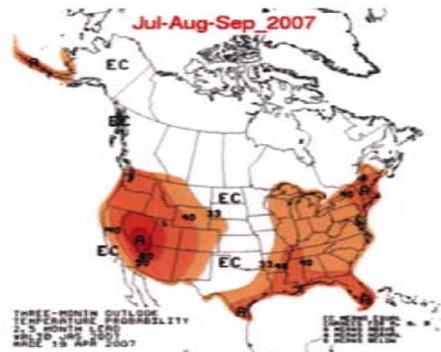
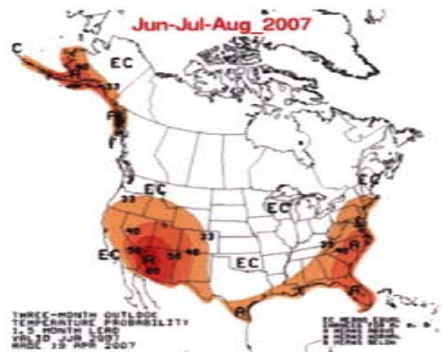
May07-
Jul07



Precipitation Jun07-May08



Temperature Jun07-May08



RECLAMATION

Managing Water in the West

RIO GRANDE PROJECT

INFLOW TO ELEPHANT BUTTE RESERVOIR AT SAN MARCIAL STATIONS

	2007				
	Jan	Feb	Mar	Apr	Total
	57,485	53,714	71,889	68,803	251,891
Avg.	47,000	48,000	60,000	120,000	275,000

Jan. 2007 – Feb. 2007 = 117.1% of average

Oct. 2006 – Dec. 2006 = 135.4% of average

Mar.-Apr. 2007 = 78.2% of average; 77% of runoff

RECLAMATION

Managing Water in the West

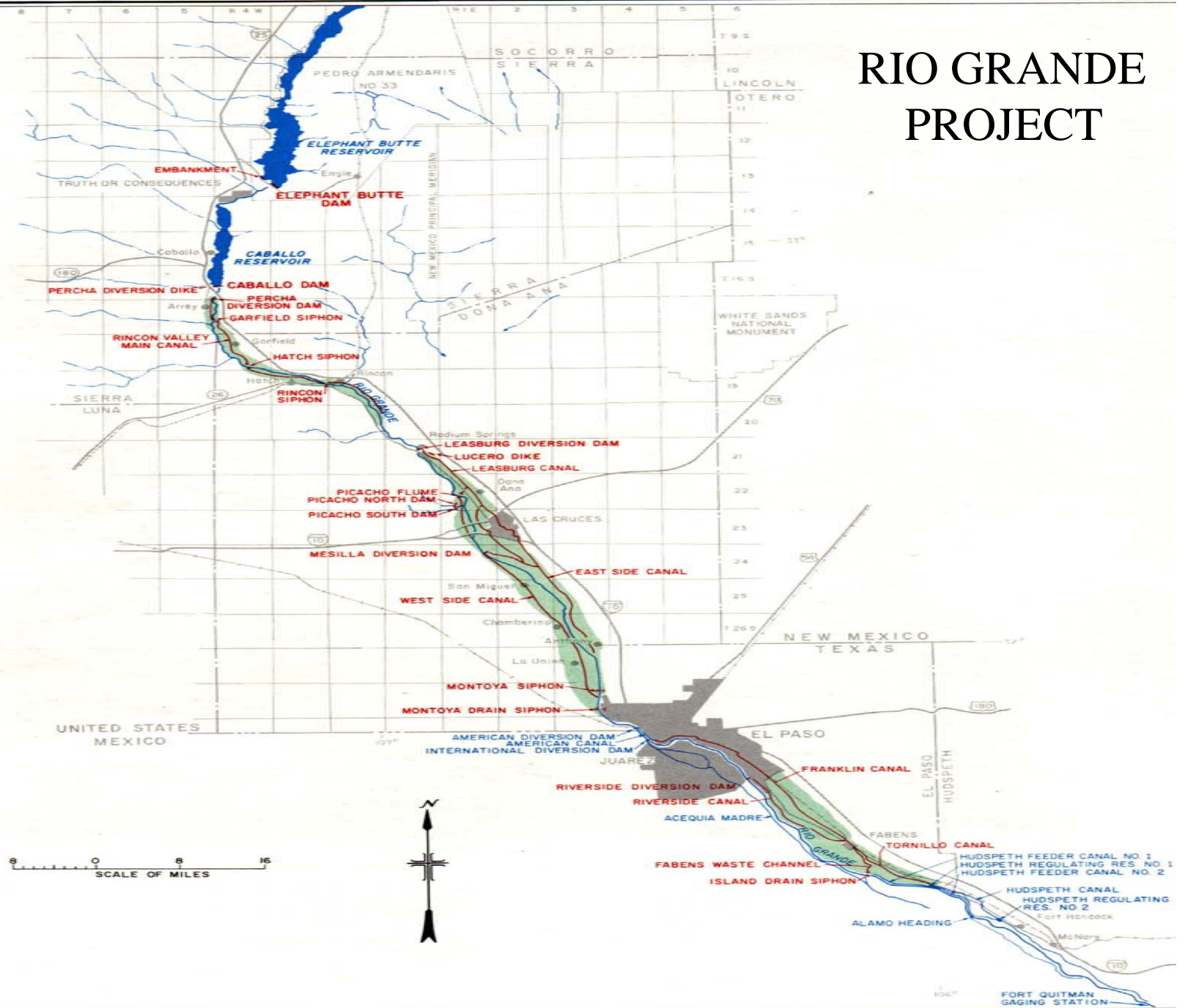
RIO GRANDE PROJECT

CURRENT RESERVOIR CONDITIONS



U. S Dept. of the Interior
Bureau of Reclamation

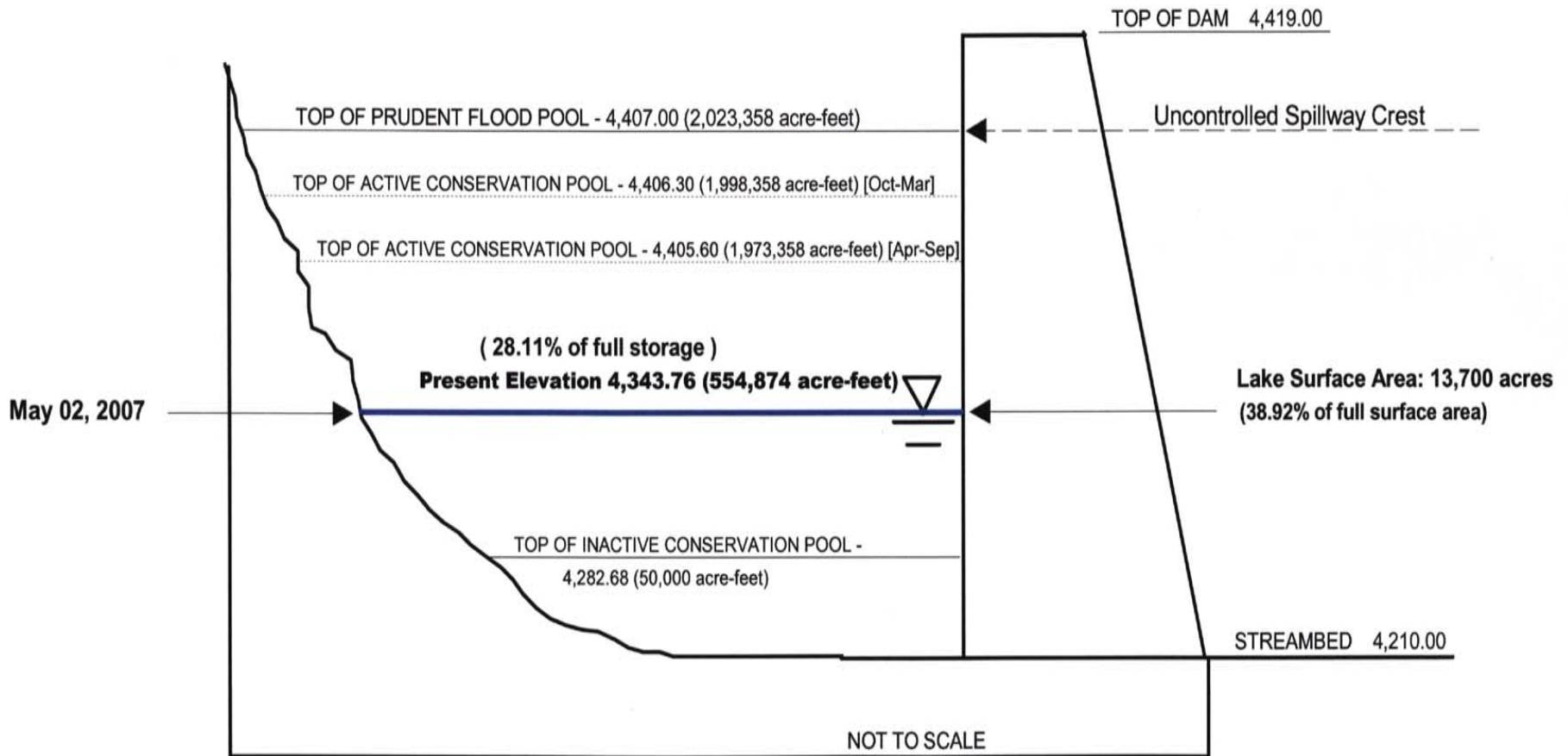
RIO GRANDE PROJECT



Elephant Butte Dam & Reservoir

Physical Features

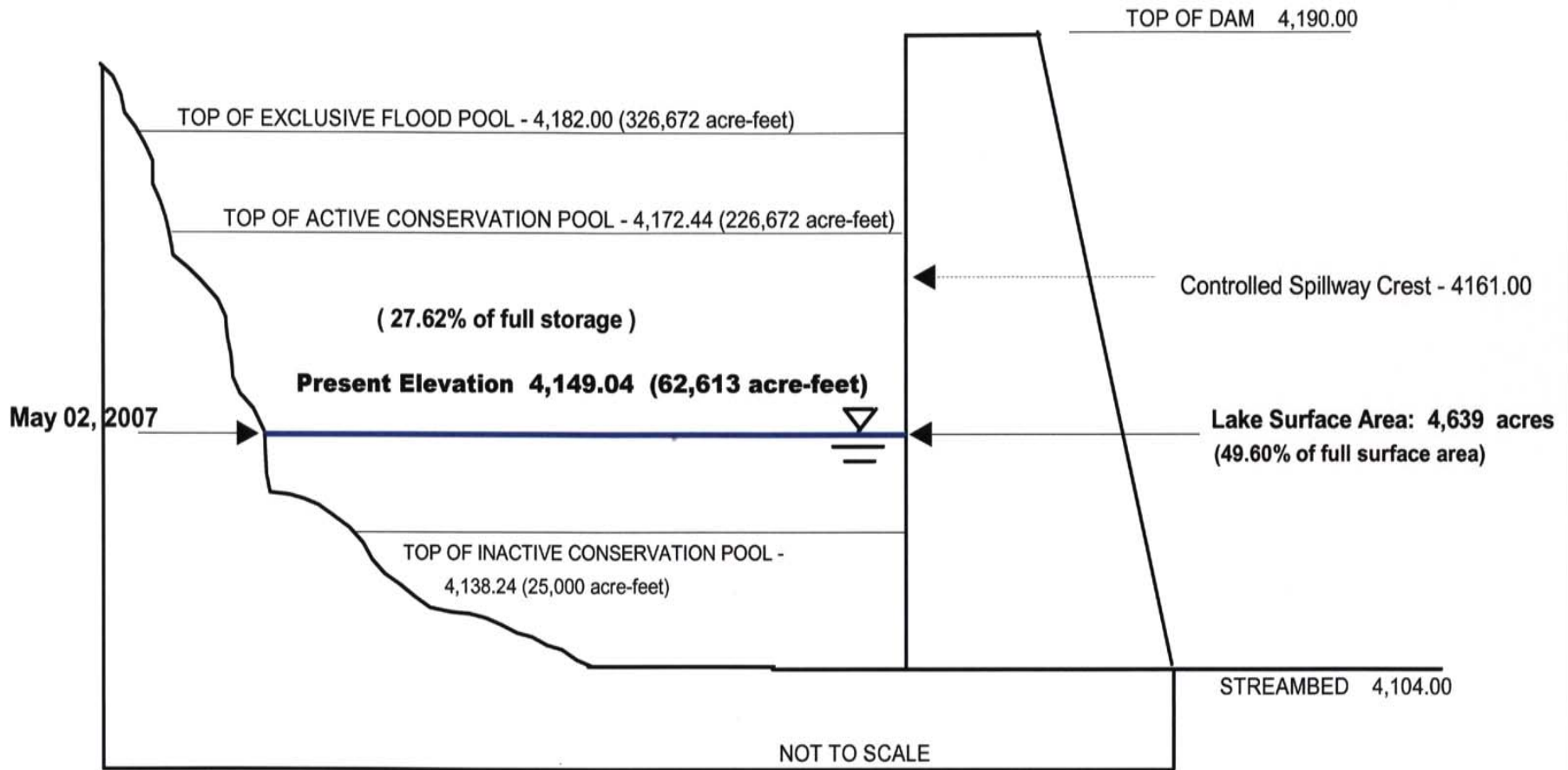
Pertinent Elevation in Feet (Rio Grande Project datum, to obtain USGS mean sea level, add 43.3 ft.)



Caballo Dam & Reservoir

Physical Features

Pertinent Elevation in Feet (Rio Grande Project datum, to obtain USGS mean sea level, add 43.3 ft.)



BUREAU OF RECLAMATION
RIO GRANDE PROJECT
EL PASO, TX

2007 OPERATIONAL DATA STATUS

ELEPHANT BUTTE RESERVOIR			RESERVOIR WATER SURFACE ELEVATION (feet)	FEET BELOW SPILLWAY CREST (feet)	RESERVOIR TOTAL STORAGE (acre-feet)	PERCENT OF FULL RESERVOIR (%)	RESERVOIR WATER SURFACE AREA (acres)	PERCENT OF FULL RESERVOIR SURFACE AREA (%)
TODAY'S DATE:	Wednesday, May 02, 2007		4343.76	63.24	554,874	28.12%	13,700	38.92%
2007 HIGH POINT:	Monday, March 26, 2007		4347.76	59.24	611,063	30.58%	14,395	40.45%
2006 HIGH POINT:	Sunday, March 05, 2006		4339.88	67.12	503,027	25.17%	13,024	36.59%
2006 LOW POINT:	Friday, July 28, 2006		4308.50	98.50	183,875	9.32%	7,228	20.54%
2006 Fall Low Pt.:	Monday, September 11, 2006		4326.28	80.72	343,079	17.39%	10,571	30.03%
<i>Gates Closed Sep. 11, 2006</i>								
2005 LOW POINT:	Saturday, January 01, 2005		4309.94	97.06	194,426	9.73%	7,426	20.86%
2004 LOW POINT:	Friday, September 24, 2004		4294.04 *	112.96	94,615	4.79%	4,935	14.02%

* We haven't been this low at Elephant Butte Reservoir since November 1978.

CABALLO RESERVOIR			RESERVOIR WATER SURFACE ELEVATION (feet)	FEET BELOW SPILLWAY CREST (feet)	RESERVOIR TOTAL STORAGE (acre-feet)	PERCENT OF FULL RESERVOIR (%)	RESERVOIR WATER SURFACE AREA (acres)	PERCENT OF FULL RESERVOIR SURFACE AREA (%)
TODAY'S DATE:	Wednesday, May 02, 2007		4149.04	23.40 **	62,613	27.62%	4,639	49.61%
2006 HIGH POINT:	Friday, August 25, 2006		4150.82	21.62 **	71,220	31.42%	5,024	53.72%
2006 LOW POINT:	Sunday, January 01, 2006		4133.98	38.46 **	15,650	6.90%	1,937	20.72%
2006 FALL LOW PT.:	Sunday, October 08, 2006		4141.98	30.46 **	35,351	15.60%	3,121	33.37%
<i>Gates Closed Oct. 10, 2006.</i>								
2005 LOW POINT:	Thursday, October 13, 2005		4131.26	41.18 **	10,744	4.74%	1,670	17.86%
<i>Gates Closed Oct. 14, 2005.</i>								
2004 GATES CLOSED:	Tuesday, September 28, 2004		4134.10	38.34 **	15,883	7.01%	1,949	20.84%

** Feet below top of conservation pool.

RECLAMATION

Managing Water in the West

RIO GRANDE PROJECT

2007 RESERVOIR OPERATIONS



U. S Dept. of the Interior
Bureau of Reclamation

**WORKSHEET OF STATUS OF RIO GRANDE COMPACT CREDIT WATERS & SAN JUAN-
CHAMA WATER IN ELEPHANT BUTTE RESERVOIR AND ACCRUED DEPARTURES**

WTTrees
5/2/2007

2007

ELEPHANT BUTTE RESERVOIR

**CABALLO
RESERVOIR**

Rio Grande Compact
Credit Waters

San Juan-
Chama
Pool
(AF)

Rio Grande
Compact Accrued
Departures

Colorado
(AF)

New Mexico
(AF)

Texas
(AF)

Beginning of 2007 (derived from 2006
RGC Accounting)

15,500

180,100

4,517

628,400

Estimated Evaporation from Jan. 1 to
Mar. 31, 2007 (derived from actual data)

50

Relinquishment of Credit Water by CO to
TX on March 31, 2007

300

Caballo Reservoir Releases
(actual data thru Mar. 31, 2007)

77,048

Bonita Lateral Releases
(actual data thru Mar. 31, 2007)

120

2007 Departure from Normal Release
at Caballo Reservoir (thru Mar. 31, 2007)

0

Preliminary Status of RGC Credit Waters,
SJ-C Water, & Accr. Deps. to Mar. 31, 2007

15,200

180,100

4,467

628,400

**RIO GRANDE COMPACT USABLE WATER
IN PROJECT STORAGE**

Wednesday, May 02, 2007

Elephant Butte Reservoir	554,874 acre-feet	
<u>Caballo Reservoir</u>	<u>62,613 acre-feet</u>	<u>617,487 AF</u>
Compact Credit Waters	-195,300 acre-feet	
<u>San Juan-Chama Water</u>	<u>-4,467 acre-feet</u>	<u>-199,767 AF</u>
USABLE PROJECT WATER		417,720 AF

RECLAMATION

2007

**RIO GRANDE COMPACT USABLE WATER
IN PROJECT STORAGE**

Rio Grande Compact Article VII Restriction

Compact usable water went below 400K on Apr. 14, 2006

Compact usable water went above 400K on Nov. 06, 2006

Compact usable water went below 400K on Jan. 01, 2007

Compact usable water went above 400K on Jan. 29, 2007

Prediction (based on latest RGP op. plan dated 04/30/07):

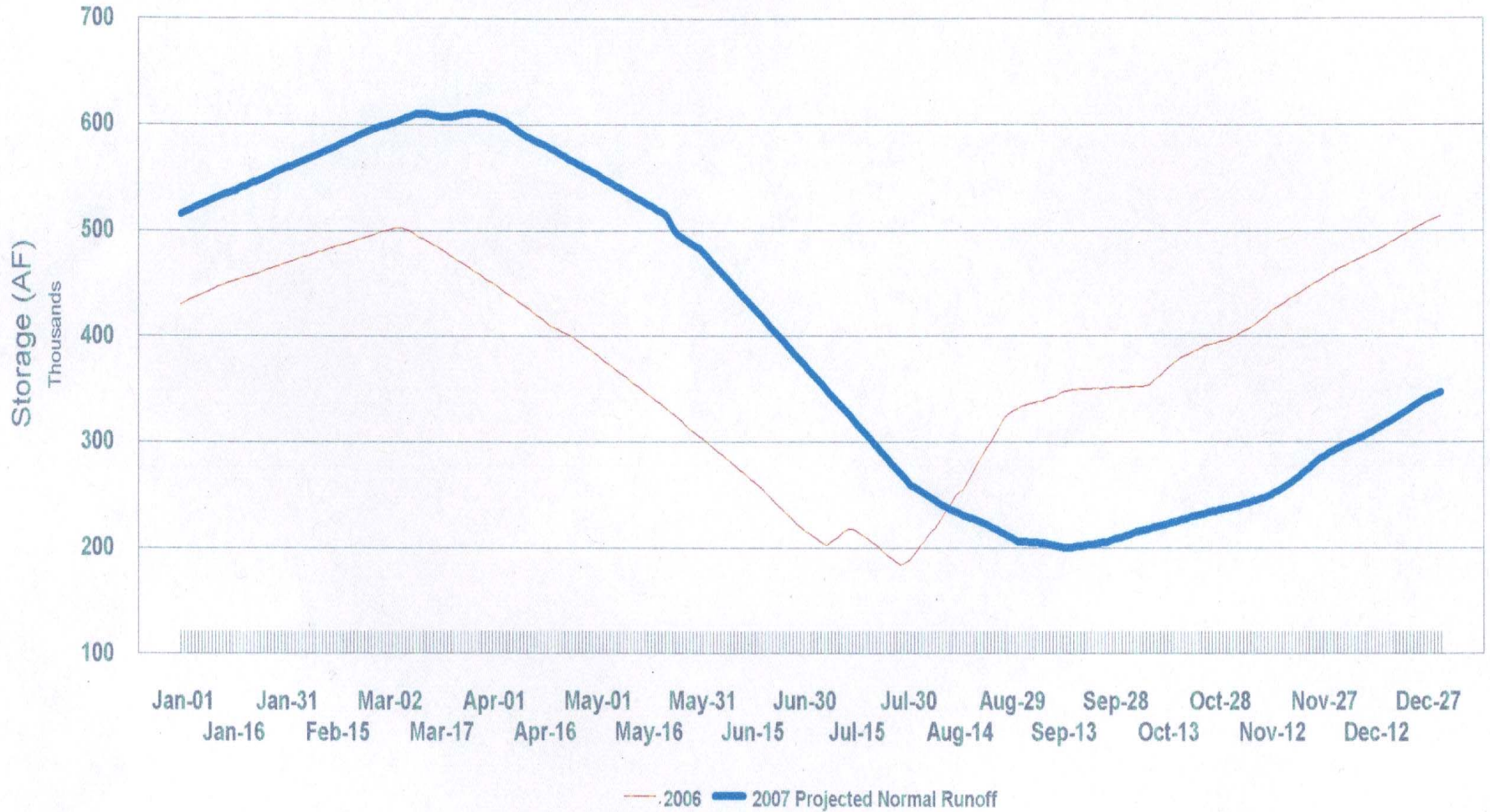
Go below 400K on May 08, 2007

Stay below 400K for the rest of 2007

(based on 32% spring runoff at San Marcial in 2007)

ELEPHANT BUTTE RESERVOIR

2007 PROJECTED STORAGE*



*Actual Data thru Apr. 30; other data is a projection.

*Based on Rio Grande Project runs dated May 1, 2007.

**ELEPHANT BUTTE RESERVOIR
2007 PROJECTED LAKE ELEVATIONS
SUMMARY TABLE**

W Treers
5/1/2007

[SUBJECT TO REVISION]

	Elevation (feet) *	Storage (acre-feet)	Lake Surface Area (acres)	Difference In Elevation From 2006	
July 28, 2006 (Low Pt.)	4308.50	183,875	7,228	-29.44	(Diff. from 2005)
End of Season September 11, 2006	4326.28	343,079	10,571	0.96	(Diff. from 10/10/05)
March 26, 2007 (High Pt.)	4347.76	611,063	14,395	7.88	(Diff. from 3/05/06)
<u>TODAY - MAY 02, 2007:</u>	4343.76	554,874	13,700	14.00	
2007 RIO GRANDE PROJECT RESERVOIRS PLAN MOST PROBABLE - 32% RUNOFF					
May 28, 2007 (Memorial Day)	4338.80	489,128	12,821	15.40	
July 04, 2007 (Independence Day)	4327.82	359,513	10,819	16.08	
September 03, 2007 (Labor Day)	4311.38	205,335	7,728	-14.20	
September 15, 2007 (Low Pt.)	4310.62	199,551	7,566	-16.22	(2.12 ft. from 7/28/06)
December 31, 2007	4326.67	347,226	10,634	-14.05	

* Rio Grande Project datum, to obtain USGS mean sea level, add 43.3 feet.

CABALLO RESERVOIR

2007 PROJECTED STORAGE*

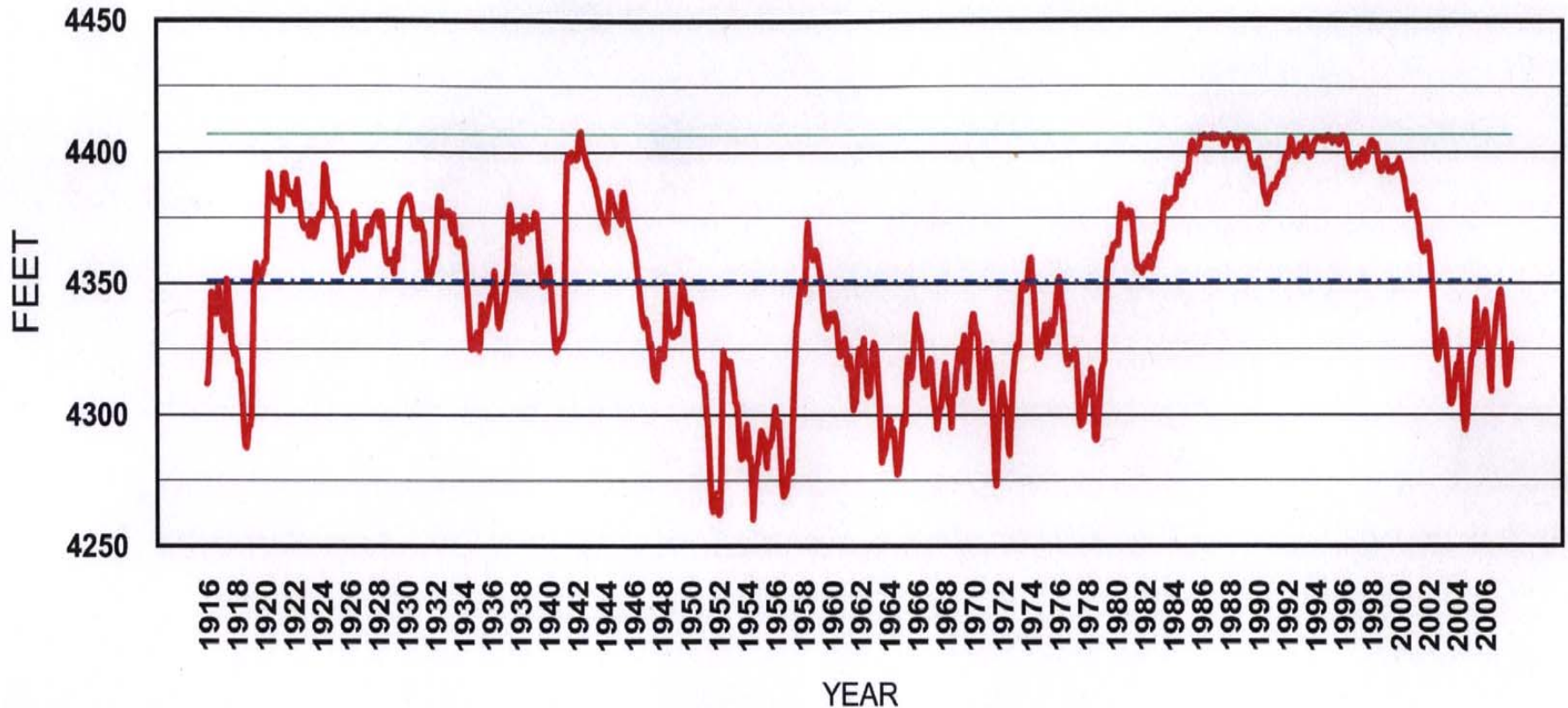


* Actual data through Apr. 30; other data is a projection.

*Based on Rio Grande Project runs dated Apr. 30.

ELEPHANT BUTTE RESERVOIR

HISTORICAL END-OF-MONTH ELEVATION**



— Elevation * — Spillway Elevation - - - Historical avg end-of-month elevation

**Data thru end of Apr. 2007 is actual data, other 2007 data is a projection, based on Reclamation's 2007 most probable plan.

* BOR project datum. To obtain mean sea level datum, add 43.3 feet

RECLAMATION

Managing Water in the West

RIO GRANDE PROJECT

2007 WATER SUPPLY & PROJECTED ALLOCATION



U. S Dept. of the Interior
Bureau of Reclamation

2007 Rio Grande Project Allocation

Initial Allocation - Mid-January, 2007

(letter issued Jan. 25, 2007)

Mexico	24,385	AF
Elephant Butte Irrigation District	152,200	AF
El Paso County Water Improvement District # 1	192,881	AF
	<hr/>	
[39.65% of a full supply]	369,466	AF *

Updated Allocation - End of January, 2007

(letter issued Feb. 16, 2007)

Mexico	27,710	AF
Elephant Butte Irrigation District	163,931	AF
El Paso County Water Improvement District # 1	211,954	AF
	<hr/>	
[43.31% of a full supply]	403,595	AF *

Updated Allocation - End of February, 2007

(letter issued Mar. 26, 2007)

Mexico	30,099	AF
Elephant Butte Irrigation District	172,361	AF
El Paso County Water Improvement District # 1	225,659	AF
	<hr/>	
[45.94% of a full supply]	428,119	AF *

Updated Allocation - End of March, 2007

(letter issued Apr. 20, 2007)

Mexico	35,729	AF
Elephant Butte Irrigation District	192,224	AF
El Paso County Water Improvement District # 1	257,951	AF
	<hr/>	
[52.14% of a full supply]	485,904	AF *

* Project water supply available for diversion at the authorized canal headings.

**SUMMARY TABLE OF PROJECTED
ALLOCATIONS FOR 2007**

W Trees
5/1/2007

2007 RUNOFF FORECAST		most probable 265,000 AF 46% of Average *	70% exceed. 200,000 AF 35% of Average *
FORECASTS ADJUSTED FOR UPSTREAM REGULATION		-83,000 AF 182,000 AF 32%	-53,000 AF 147,000 AF 26%
		(acre-feet)	(acre-feet)
EO APRIL, 2007 ** (a)	EBID	212,604	212,603
	EP#1	291,083	291,081
	MEXICO	41,505	41,505
	TOTAL	545,192 58.51%	545,189 58.51%
EO MAY, 2007 ** (a)	EBID	218,221	212,603
	EP#1	300,215	291,081
	MEXICO	43,097	41,505
	TOTAL	561,534 60.26%	545,189 58.51%
EO JUNE, 2007 ** (a)	EBID	218,221 (b)	212,603 (b)
	EP#1	300,215	291,081
	MEXICO	43,097	41,505
	TOTAL	561,534 60.26%	545,189 58.51%
EO JULY, 2007 ** (a)	EBID	218,221 (b)	212,603 (b)
	EP#1	300,215	291,081
	MEXICO	43,097	41,505
	TOTAL	561,534 60.26%	545,189 58.51%
EO AUGUST, 2007 ** (a)	EBID	247,492 (b)	236,895 (b)
	EP#1	302,402	287,338
	MEXICO	43,479	40,852
	TOTAL	593,373 63.68%	565,085 60.64%
2007 ESTIMATED CABALLO RESERVOIR RELEASE		590,092	551,366
FALL 2007 ESTIMATED ELEPHANT BUTTE RESERVOIR LOW POINT		199,551 (September 15)	199,195 (September 02)

* Average (normal) runoff volume at San Marcial gauging stations (Mar-Jul) is 573,000 AF.

** EO month storage figures based on Reclamation's Rio Grande Project reservoirs operational plans developed on **April 30, 2007**. Allotments are made to the Rio Grande Project canal headings. A full supply allocation for an irrigation season is: 494,979 AF to EBID canal headings; 376,862 AF to EP#1 headings; and 60,000 AF to Mexico's Acequia Madre heading under the 1906 Treaty for a total of 931,841 AF.

(a) Assuming no relinquishment of Rio Grande Compact credit waters occurring in 2007 for New Mexico and 300 AF relinquishment for Colorado. Excludes New Mexico's and Colorado's Rio Grande Compact credit waters in Elephant Butte Reservoir of 195,300 AF accrued credits at end of Mar. 2007 as well as San Juan-Chama water of 4,467 AF through Mar. 31, 2007.

(b) Assuming at least 100% efficiency of delivering Project water supply from Caballo Dam to Project canal headings by end of July, 2007, so EBID will not incur river losses at that point, and a net supply available for release from from Caballo Dam of 790,000 AF.

**STATUS OF RIO GRANDE COMPACT USABLE
WATER IN PROJECT STORAGE**

	<u>32%</u>	<u>21%</u>
Go blw 400 KAF	Jan 1	Jan 1
Go abv 400 KAF	Jan 29	Jan 29
Go blw 400 KAF	May 08	May 08
Stay blw 400 KAF for rest of 2007	√	√

CABALLO RESERVOIR RELEASE TENTATIVE SCHEDULE FOR 2007

* actual release dates.

- * March 07: Release from Caballo Dam for EP#1's orders
- * March 10: Release from Caballo Dam for EBID's orders
- * March 19: Release from Caballo Dam for Mexico's orders
- May 14: Mexico shut down diversions at Acequia Madre heading
- June 01: Mexico re-starts diversions at Acequia Madre heading
- August 08: Mexico tentatively stops diversions to end irrig. season
- Sep. 15: Tentative shutdown of EButte Dam for end of season
- Sep. 15: Tentative shutdown at Caballo Dam to end irrig. season

RIO GRANDE PROJECT
2006 WATER OPERATIONS SUMMARY

ELEPHANT BUTTE RESERVOIR INFLOW (San Marcial Flow)	486,800	A-F	
ELEPHANT BUTTE RESERVOIR OUTFLOW	481,470	A-F	
CABALLO RESERVOIR INFLOW	481,470	A-F	
CABALLO RESERVOIR OUTFLOW	432,900	A-F	
EBID WATER CHARGES	211,840	A-F	
EPCWID#1 WATER CHARGES *	177,183	A-F	(49,963 AF unused)
CITY OF EL PASO DIVERSIONS	42,948	A-F	
MEXICO DIVERSIONS	27,112	A-F	
HCCRD DIVERSIONS **	50,296	A-F	
FT. QUITMAN FLOW ***	150,644	A-F	

* Includes City of El Paso diversions.

** System waste and return flows.

*** Includes discharge from Acequia Madre in Mexico.

RECLAMATION

Managing Water in the West

RIO GRANDE PROJECT

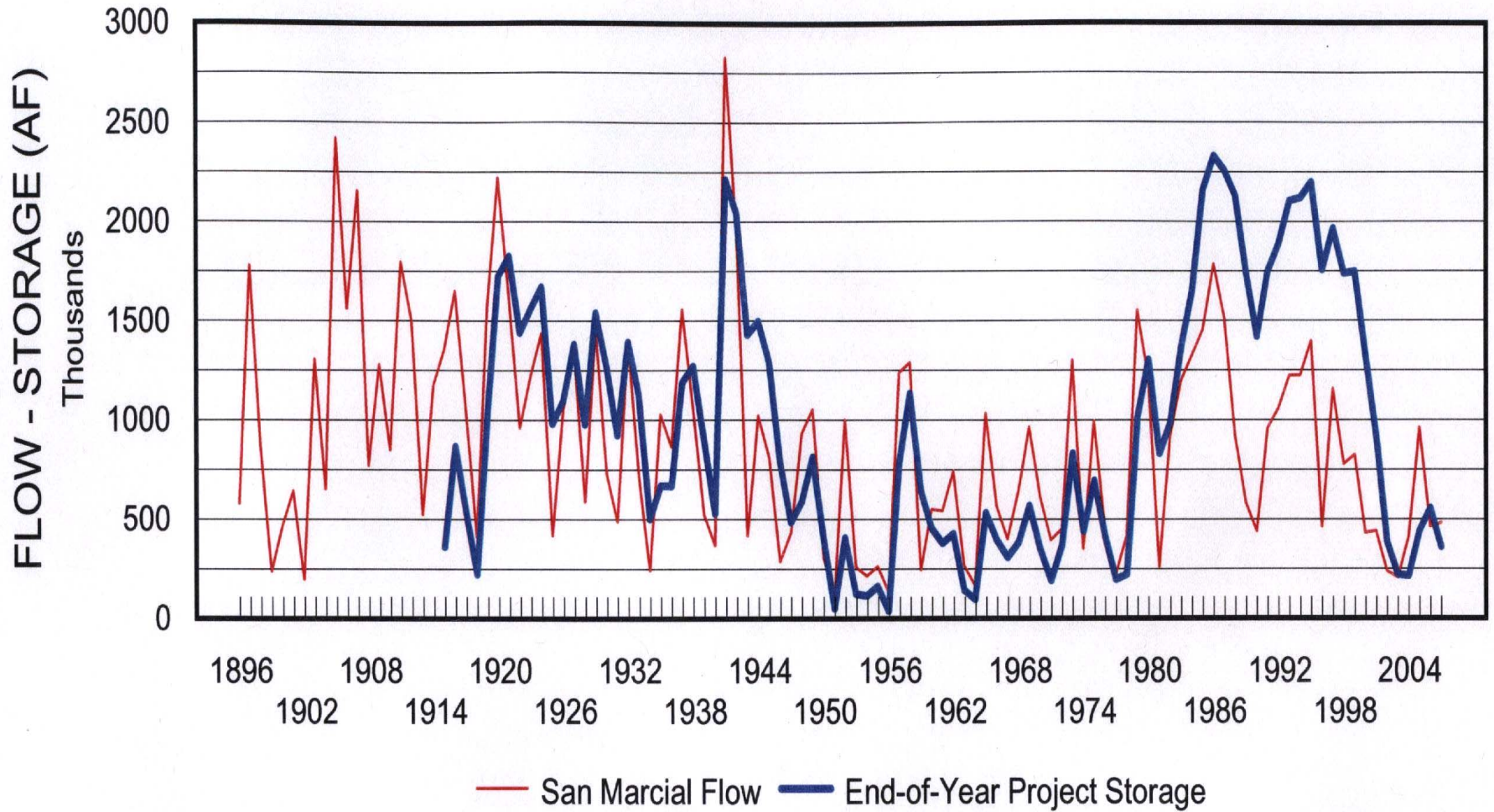
SUPPORTING INFORMATION



U. S Dept. of the Interior
Bureau of Reclamation

SAN MARCIAL FLOW - RIO GRANDE PROJECT STORAGE

1896 Through 2007*



* End-of-year project storage and San Marcial flow for 2007 is a projection based on Rio Grande Project most probable plan.

**STATUS OF RIO GRANDE COMPACT CREDIT WATERS
IN ELEPHANT BUTTE RESERVOIR SINCE LAST SPILL
FROM RIO GRANDE PROJECT STORAGE ***

<u>YEAR</u>	<u>COLORADO (acre-feet)</u>	<u>NEW MEXICO (acre-feet)</u>	
1995	0	0	SPILL YEAR
1996	2,400	68,800	
1997	2,900	105,500	
1998	11,500	153,100	
1999	17,700	170,700	
2000	27,000	269,100	
2001	10,100	155,700	
2002	42,800	265,000	
2003	1,200	54,000	
2004	4,400	35,600	
2005	4,600	37,100	
2006	15,500	180,100	

* derived from Rio Grande Compact Commission yearly reports.

2005
RIO GRANDE COMPACT USABLE WATER
IN PROJECT STORAGE

Rio Grande Compact Article VII Restriction

Compact Usable Water Below 400,000 AF – July 4, 2002
Compact Usable Water Above 400,000 AF – May 20, 2005
Compact Usable Water Below 400,000 AF – August 26, 2005
Compact Usable Water Above 400,000 AF – December 27, 2005
Compact Usable Water Below 400,000 AF – April 14, 2006

RECLAMATION

2006 Rio Grande Project Allocation

Initial Allocation - End of November, 2005

(letter issued Dec. 16, 2005)

Mexico	23,816	AF
Elephant Butte Irrigation District	186,074	AF
El Paso County Water Improvement District # 1	141,670	AF
[37.73% of a full supply]	351,560	AF *

Updated Allocation - End of December, 2005

(letter issued Jan. 18, 2006)

Mexico	26,854	AF
Elephant Butte Irrigation District	209,807	AF
El Paso County Water Improvement District # 1	159,740	AF
[42.54% of a full supply]	396,401	AF *

Updated Allocation - End of January, 2006

(letter issued Feb. 14, 2006)

Mexico	29,340	AF
Elephant Butte Irrigation District	229,238	AF
El Paso County Water Improvement District # 1	174,534	AF
[46.48% of a full supply]	433,112	AF *

Updated Allocation - End of February, 2006

(letter issued Mar. 13, 2006)

Mexico	30,393	AF
Elephant Butte Irrigation District	237,457	AF
El Paso County Water Improvement District # 1	180,793	AF
[48.15% of a full supply]	448,643	AF *

Updated Allocation - End of March, 2006

(letter issued Apr. 14, 2006)

Mexico	31,522	AF
Elephant Butte Irrigation District	246,280	AF
El Paso County Water Improvement District # 1	187,510	AF
[49.93% of a full supply]	465,312	AF *

2006 Rio Grande Project Allocation

Updated Allocation - End of April, 2006

(letter issued May 12, 2006)

Mexico	31,815	AF
Elephant Butte Irrigation District	248,573	AF
El Paso County Water Improvement District # 1	189,255	AF
[50.40% of a full supply]	469,643	AF *

Updated Allocation - End of May, 2006

(letter issued June 14, 2006)

Mexico	32,048	AF
Elephant Butte Irrigation District	250,389	AF
El Paso County Water Improvement District # 1	190,639	AF
[50.77% of a full supply]	473,076	AF *

Updated Allocation - End of June, 2006

(letter issued July 21, 2006)

Mexico	33,895	AF
Elephant Butte Irrigation District	211,385	AF
El Paso County Water Improvement District # 1	227,146	AF
[50.70% of a full supply]	472,426	AF *

* Project water supply available for diversion at the authorized canal headings.

* Project water supply available for diversion at the authorized canal headings.

2005 Rio Grande Project Allocation**Initial Allocation - End of November, 2004**

(letter issued Dec. 17, 2004)

Mexico	10,605 AF
Elephant Butte Irrigation District	72,639 AF
El Paso County Water Improvement District # 1	55,305 AF
	<hr/>
[14.87% of a full supply]	138,549 AF *

Updated Allocation - End of December, 2004

(letter issued Jan. 19, 2005)

Mexico	14,063 AF
Elephant Butte Irrigation District	96,323 AF
El Paso County Water Improvement District # 1	73,338 AF
	<hr/>
[19.72% of a full supply]	183,724 AF *

Updated Allocation - End of January, 2005

(letter issued Feb. 10, 2005)

Mexico	14,273 AF
Elephant Butte Irrigation District	97,760 AF
El Paso County Water Improvement District # 1	74,431 AF
	<hr/>
[20.01% of a full supply]	186,464 AF *

Updated Allocation - End of February, 2005

(letter issued Mar. 10, 2005)

Mexico	18,717 AF
Elephant Butte Irrigation District	128,200 AF
El Paso County Water Improvement District # 1	97,608 AF
	<hr/>
[26.24% of a full supply]	244,525 AF *

Updated Allocation - End of March, 2005

(letter issued Apr. 19, 2005)

Mexico	22,247 AF
Elephant Butte Irrigation District	152,377 AF
El Paso County Water Improvement District # 1	116,016 AF
	<hr/>
[31.19% of a full supply]	290,640 AF *

2005 Rio Grande Project Allocation**Updated Allocation - End of April, 2005**

(letter issued May 11, 2005)

Mexico	28,423 AF
Elephant Butte Irrigation District	194,678 AF
El Paso County Water Improvement District # 1	148,222 AF
	<hr/>
[39.85% of a full supply]	371,323 AF *

Updated Allocation - End of May, 2005

(letter issued June 13, 2005)

Mexico	44,422 AF
Elephant Butte Irrigation District	304,258 AF
El Paso County Water Improvement District # 1	231,654 AF
	<hr/>
[62.28% of a full supply]	580,334 AF *

Updated Allocation - End of June, 2005

(letter issued July 8, 2005)

Mexico	59,809 AF
Elephant Butte Irrigation District	431,953 AF
El Paso County Water Improvement District # 1	328,876 AF
	<hr/>
[88.07% of a full supply]	820,638 AF *

Updated Allocation - July 15, 2005

(letter issued July 22, 2005)

Mexico	60,000 AF
Elephant Butte Irrigation District	462,075 AF
El Paso County Water Improvement District # 1	351,810 AF
	<hr/>
[93.78% of a full supply]	873,885 AF *

Updated Allocation - End of July, 2005

(letter issued August 08, 2005)

Mexico	60,000 AF
Elephant Butte Irrigation District	478,849 AF
El Paso County Water Improvement District # 1	364,580 AF
	<hr/>
[96.95% of a full supply]	903,429 AF *

2005 Rio Grande Project Allocation

Updated Allocation - August 15, 2005

(letter issued August 22, 2005)

Mexico	60,000	AF
Elephant Butte Irrigation District	492,065	AF
El Paso County Water Improvement District # 1	374,644	AF
	<hr/>	
[99.45% of a full supply]	926,709	AF

Final Allocation - End of August, 2005

(letter issued September 12, 2005)

Mexico	60,000	AF
Elephant Butte Irrigation District	494,979	AF
El Paso County Water Improvement District # 1	376,862	AF
	<hr/>	
[100.00% of a full supply]	931,841	AF

* Project water supply available for diversion at the authorized canal headings.

2004 Rio Grande Project Allocation**Initial Allocation - End of November, 2003**

(letter issued Dec. 15, 2003)

Mexico	2,918 AF
Elephant Butte Irrigation District	23,134 AF
El Paso County Water Improvement District # 1	17,615 AF
	<hr/>
[4.69% of a full supply]	43,667 AF *

Updated Allocation - End of December, 2003

(letter issued Jan. 21, 2004)

Mexico	5,191 AF
Elephant Butte Irrigation District	41,163 AF
El Paso County Water Improvement District # 1	31,341 AF
	<hr/>
[8.34% of a full supply]	77,695 AF *

Updated Allocation - End of January, 2004

(letter issued Feb. 11, 2004)

Mexico	6,733 AF
Elephant Butte Irrigation District	53,387 AF
El Paso County Water Improvement District # 1	40,646 AF
	<hr/>
[10.81% of a full supply]	100,766 AF *

Updated Allocation - End of February, 2004

(letter issued Mar. 10, 2004)

Mexico	16,461 AF
Elephant Butte Irrigation District	130,524 AF
El Paso County Water Improvement District # 1	99,377 AF
	<hr/>
[26.44% of a full supply]	246,362 AF *

Updated Allocation - End of March, 2004

(letter issued Apr. 09, 2004)

Mexico	18,600 AF
Elephant Butte Irrigation District	147,487 AF
El Paso County Water Improvement District # 1	112,292 AF
	<hr/>
[29.87% of a full supply]	278,379 AF *

2004 Rio Grande Project Allocation**Updated Allocation - End of April, 2004**

(letter issued May 06, 2004)

Mexico	23,337 AF
Elephant Butte Irrigation District	180,179 AF
El Paso County Water Improvement District # 1	137,182 AF
	<hr/>
[36.56% of a full supply]	340,698 AF *

Updated Allocation - End of May, 2004

(letter issued June 08, 2004)

Mexico	27,197 AF
Elephant Butte Irrigation District	185,507 AF
El Paso County Water Improvement District # 1	141,240 AF
	<hr/>
[37.98% of a full supply]	353,944 AF *

Updated Allocation - End of June, 2004

(letter issued July 09, 2004)

Mexico	27,197 AF
Elephant Butte Irrigation District	185,507 AF
El Paso County Water Improvement District # 1	141,240 AF
	<hr/>
[37.98% of a full supply]	353,944 AF *

Final Allocation - End of July, 2004

(letter issued August 18, 2004)

Mexico	27,197 AF
Elephant Butte Irrigation District	185,507 AF
El Paso County Water Improvement District # 1	141,240 AF
	<hr/>
[37.98% of a full supply]	353,944 AF *

Final Allocation (November 21, 2006):

	(AF)	<u>Utilization of Allocation</u>	
	(AF)	(AF)	
MEXICO	33,895	27,112	
EBID	211,385	210,139	
EP#1	227,146	170,586	0 *
TOTAL	472,426	407,837	
% of Full Supply	50.70%		

Final Allocation (September 12, 2005):

	(AF)	<u>Utilization of Allocation</u>	
	(AF)	(AF)	
MEXICO	60,000	58,091	
EBID	494,979	356,689	
EP#1	376,862	247,607	0 *
TOTAL	931,841	662,387	
% of Full Supply	100.00%		

Final Allocation (August 18, 2004):

	(AF)	<u>Utilization of Allocation</u>	
		(AF)	
MEXICO	27,197	27,613	
EBID	185,507	165,693	preliminary
EP#1	141,240	141,240	3,743
TOTAL	353,944	334,546	
% of Full Supply	37.98%		

Final Allocation (August 21, 2003):

	(AF)	<u>Utilization of Allocation</u>	
		(AF)	
MEXICO	26,616	26,948	
EBID	165,144	164,741	
EP#1	125,735	125,122	12,127
TOTAL	317,495	316,811	
% of Full Supply	34.07%		

ELEPHANT BUTTE RESERVOIR

Top of Conservation Storage Pool:
(Rio Grande Project Authorization)

TOTAL STORAGE
2,023,358 AF
(ELEV 4407.00 FT)

FLOOD RESERVATION
POOL

Top of Conservation Storage Pool:
Winter (October 1 - March 31)

1,998,358 AF
(ELEV 4406.30 FT)

25,000 AF (WINTER)

Top of Conservation Storage Pool:
Summer (April 1 - September 30)

1,973,358 AF
(ELEV 4405.60 FT)

50,000 AF (SUMMER)

Top of City of Albuquerque SJ-C Pool:
1983 Contract for irrig. and domestic

50,000 AF
(ELEV 4295.11 FT)

Top of Federal Recreation Pool:
1974 Public Law 93-493, 88 Stat. 1486

50,000 AF
(ELEV 4282.68 FT)

CABALLO RESERVOIR

Top of Flood Control Pool:

326,672 AF
(ELEV 4182.00 FT)

EXCLUSIVE
FLOOD CONTROL

Top of Conservation Storage Pool:

226,672 AF
(ELEV 4172.44 FT)

100,000 AF

Top of Minimum Fishery Pool:
Biological Opinion (1991)

25,000 AF
(ELEV 4138.24 FT)

Court Order No. CIV-90-95 HB/WWD:

October 1 - January 31 (each year), storage level
will not exceed 50,000 AF (elev 4146.11 ft)

**RIO GRANDE PROJECT HISTORICAL
ALLOCATION OF PROJECT WATER SUPPLY**

WTrees
03/26/2003

YEAR	INITIAL ALLOTMENT TO PROJECT LANDS (acre-foot/acre)	FINAL ALLOTMENT TO PROJECT LANDS (acre-foot/acre)	INITIAL ALLOTMENT TO PROJECT CANAL HEADINGS (acre-feet)	FINAL ALLOTMENT TO PROJECT CANAL HEADINGS (acre-feet)	MEXICO DIVERSION AT ACEQUIA MADRE HEADING (acre-feet)	INITIAL RELEASE DATE FROM CABALLO DAM	CABALLO DAM TOTAL YEARLY RELEASE (acre-feet)
					*		
1951	1.00	1.75			33,059	03/06	469,450
1952	0.21	2.50			49,890	03/20	543,975
1953	1.00	1.90			37,760	03/10	528,628
1954	0.42	0.50			10,147	03/20	244,165
1955	0.21	0.42			8,185	03/20	219,157
1956	0.33	0.39			7,864	03/18	246,140
1957	0.10	1.17			23,290	03/20	397,103
1958	1.75	4.00			60,050	03/01	737,125
1959	3.00	3.50			60,110	03/02	687,414
1960	2.25	3.25			60,320	03/02	705,162
1961	1.25	2.45			48,610	03/10	561,697
1962	1.75	3.25			60,057	03/05	651,941
1963	1.85	2.00			39,693	03/05	517,172
1964	0.25	0.33			6,653	03/15	206,085
1965	0.17	1.85			36,658	03/20	505,598
1966	1.75	2.50			49,618	03/05	610,341
1967	1.25	1.50			29,829	02/27	456,517
1968	1.00	2.00			39,677	02/27	505,691
1969	1.25	3.00			59,884	02/27	667,669
1970	2.00	3.00			60,065	02/23	661,125
1971	1.50	1.75			34,847	02/26	498,375
1972	0.60	0.80			16,077	03/01	260,911
1973	1.00	3.00			60,000	03/09	617,461
1974	3.00	3.00			60,050	03/02	640,843
1975	1.00	3.00			60,052	01/24	580,617
1976	2.50	3.00			60,172	01/16	679,676
1977	1.00	1.25			24,824	03/03	416,496
1978	0.25	0.75			14,903	03/10	356,167
1979	0.67	3.00		790,000	60,055	03/08	568,687

bold number means full irrigation supply for Rio Grande Project water users.

* derived from International Boundary & Water Commission (IBWC) - U. S. Section, Yearly Flow Data Publications.

**RIO GRANDE PROJECT HISTORICAL
ALLOCATION OF PROJECT WATER SUPPLY**

WTTrees
04/17/2007

YEAR	INITIAL ALLOTMENT TO PROJECT LANDS (acre-foot/acre)	FINAL ALLOTMENT TO PROJECT LANDS (acre-foot/acre)	INITIAL ALLOTMENT TO PROJECT CANAL HEADINGS (acre-foot)	FINAL ALLOTMENT TO PROJECT CANAL HEADINGS (acre-foot)	MEXICO DIVERSION AT ACEQUIA MADRE HEADING (acre-foot)	INITIAL RELEASE DATE FROM CABALLO DAM	CABALLO DAM TOTAL YEARLY RELEASE (acre-foot)
					*		
1979	0.67	3.00		790,000	60,055	03/08	568,687
1980	3.00	3.00		790,000	60,033	01/17	658,686
1981	3.00	3.00	750,650	750,650	60,262	02/04	608,166
1982	3.00	3.00	790,000	790,000	59,257	01/27	635,642
1983	3.00	3.00	790,000	790,000	60,621	02/03	648,386
1984	3.00	3.00	902,000	902,000	58,588	02/09	653,150
1985			902,000	902,000	60,276	02/20	677,398
1986			902,000	902,000	66,163	04/01	1,396,165
1987			902,000	902,000	65,866	02/03	1,376,099
1988			902,000	902,000	61,935	01/20	838,008
1989			890,900	890,900	58,854	02/13	736,866
1990			931,841	931,841	58,353	02/12	680,107
1991			931,841	931,841	59,242	02/19	625,956
1992			931,841	931,841	58,080	01/09	734,982
1993			931,841	931,841	63,763	01/12	823,263
1994			931,841	931,841	60,167	01/11	893,384
1995			931,841	931,841	63,618	01/17	1,096,146
1996			931,841	931,841	60,063	01/12	774,335
1997			931,841	931,841	59,442	01/21	798,621
1998			931,841	931,841	60,628	01/16	808,661
1999			931,841	931,841	58,308	01/27	735,467
2000			931,841	931,841	60,611	01/20	751,373
2001			931,841	931,841	61,037	02/02	786,549
2002			738,139	931,841	60,324	02/19	801,147
2003			74,860	317,495	26,948	03/17	364,528
2004			43,667	353,944	27,613	03/12	398,612
2005			138,549	931,841	58,091	03/09	676,031
2006			351,560	472,426	27,112	03/08	434,228

bold number means full irrigation supply for Rio Grande Project water users.

* derived from International Boundary & Water Commission (IBWC) - U. S. Section, Yearly Flow Data Publications.

**RIO GRANDE PROJECT HISTORICAL
ALLOCATION OF PROJECT WATER SUPPLY**

W/Trees
04/17/2007

YEAR	EO FEB. TOTAL RIO GRANDE PROJECT STORAGE (acre-feet)	SAN MARCIAL SPRING RUNOFF (Mar-Jul) (acre-feet)	INITIAL ALLOTMENT TO PROJECT LANDS (acre-foot/acre)	FINAL ALLOTMENT TO PROJECT LANDS (acre-foot/acre)	INITIAL ALLOTMENT TO PROJECT CANAL HEADINGS (acre-feet)	FINAL ALLOTMENT TO PROJECT CANAL HEADINGS (acre-feet)	MEXICO DIVERSION AT ACEQUIA MADRE HEADING (acre-feet)	INITIAL RELEASE DATE FROM CABALLO DAM	CABALLO DAM TOTAL YEARLY RELEASE (acre-feet)
1951	452,730	17,877	1.00	1.75			33,059	03/06	469,450
1952	103,920	832,160	0.21	2.50			49,890	03/20	543,975
1953	468,600	143,170	1.00	1.90			37,760	03/10	528,628
1954	184,460	76,720	0.42	0.50			10,147	03/20	244,165
1955	169,850	68,920	0.21	0.42			8,185	03/20	219,157
1956	212,180	59,885	0.33	0.39			7,864	03/18	246,140
1957	77,130	600,680	0.10	1.17			23,290	03/20	397,103
1958	857,510	988,030	1.75	4.00			60,050	03/01	737,125
1959	1,185,120	72,590	3.00	3.50			60,110	03/02	687,414
1960	713,550	410,900	2.25	3.25			60,320	03/02	705,162
1961	492,870	269,550	1.25	2.45			48,610	03/10	561,697
1962	486,570	448,250	1.75	3.25			60,057	03/05	651,941
1963	513,170	116,765	1.85	2.00			39,693	03/05	517,172
1964	194,790	67,930	0.25	0.33			6,653	03/15	206,085
1965	172,340	598,290	0.17	1.85			36,658	03/20	505,598
1966	627,430	328,380	1.75	2.50			49,618	03/05	610,341
1967	454,710	74,090	1.25	1.50			29,829	02/27	456,517
1968	386,860	238,560	1.00	2.00			39,677	02/27	505,691
1969	466,970	358,710	1.25	3.00			59,884	02/27	667,669
1970	614,620	257,960	2.00	3.00			60,065	02/23	681,125
1971	435,640	112,837	1.50	1.75			34,847	02/26	498,375
1972	283,380	77,630	0.60	0.80			16,077	03/01	260,911
1973	457,960	914,090	1.00	3.00			60,000	03/09	617,461
1974	915,650	95,430	3.00	3.00			60,050	03/02	640,843
1975	507,700	617,850	1.00	3.00			60,052	01/24	580,617
1976	762,230	204,260	2.50	3.00			60,172	01/16	679,676
1977	482,460	43,374	1.00	1.25			24,824	03/03	416,496
1978	268,220	248,610	0.25	0.75			14,903	03/10	356,167
1979	328,690	1,148,880	0.67	3.00		790,000	60,055	03/08	568,687
1980	1,080,400	861,894	3.00	3.00		790,000	60,033	01/17	658,686
1981	1,339,860	54,256	3.00	3.00	750,650	750,650	60,262	02/04	608,166
1982	878,660	548,573	3.00	3.00	790,000	790,000	59,257	01/27	635,642
1983	1,070,130	920,545	3.00	3.00	790,000	790,000	60,621	02/03	648,386
1984	1,424,200	831,291	3.00	3.00	902,000	902,000	58,588	02/09	653,150
1985	1,747,700	1,133,599			902,000	902,000	60,276	02/20	677,398
1986	2,322,200	812,686			902,000	902,000	66,163	04/01	1,396,165
1987	2,336,900	1,003,319			902,000	902,000	65,866	02/03	1,376,099
1988	2,383,900	419,098			902,000	902,000	61,935	01/20	838,008
1989	2,151,900	378,144			890,900	890,900	58,854	02/13	736,866
1990	1,801,000	159,213			931,841	931,841	58,353	02/12	680,107
1991	1,509,660	656,638			931,841	931,841	59,242	02/19	625,956
1992	1,830,380	745,950			931,841	931,841	58,080	01/09	734,982
1993	1,980,230	742,508			931,841	931,841	63,763	01/12	823,263
1994	2,155,690	852,845			931,841	931,841	60,167	01/11	893,384
1995	2,203,730	991,736			931,841	931,841	63,618	01/17	1,096,146
1996	2,263,420	131,980			931,841	931,841	60,063	01/12	774,335
1997	1,814,910	600,666			931,841	931,841	59,442	01/21	798,621
1998	2,036,000	447,172			931,841	931,841	60,628	01/16	808,661
1999	1,803,410	384,225			931,841	931,841	58,308	01/27	735,467
2000	1,804,980	159,000			931,841	931,841	60,611	01/20	751,373
2001	1,359,370	241,000			931,841	931,841	61,037	02/02	786,549
2002	974,610	61,095			738,139	931,841	60,324	02/19	801,147
2003	456,140	62,029			74,860	317,495	26,948	03/17	364,528
2004	288,480	240,387			43,667	353,944	27,613	03/12	398,612
2005	331,000	738,095			138,549	931,841	58,091	03/09	676,031
2006	517,170	92,521			351,560	472,426	27,112	03/08	434,228

bold number means full irrigation supply for Rio Grande Project water users.

* derived from International Boundary & Water Commission (IBWC) - U. S. Section, Yearly Flow Data Publications.